



SUYASH[®]
GLOBAL
Indian Heart, Global Outlook

Suyash in Numbers

600+
People

31
years
Average Age

110,000
sq.ft. Manufacturing Area

70
Engineers

6
Manufacturing Plants

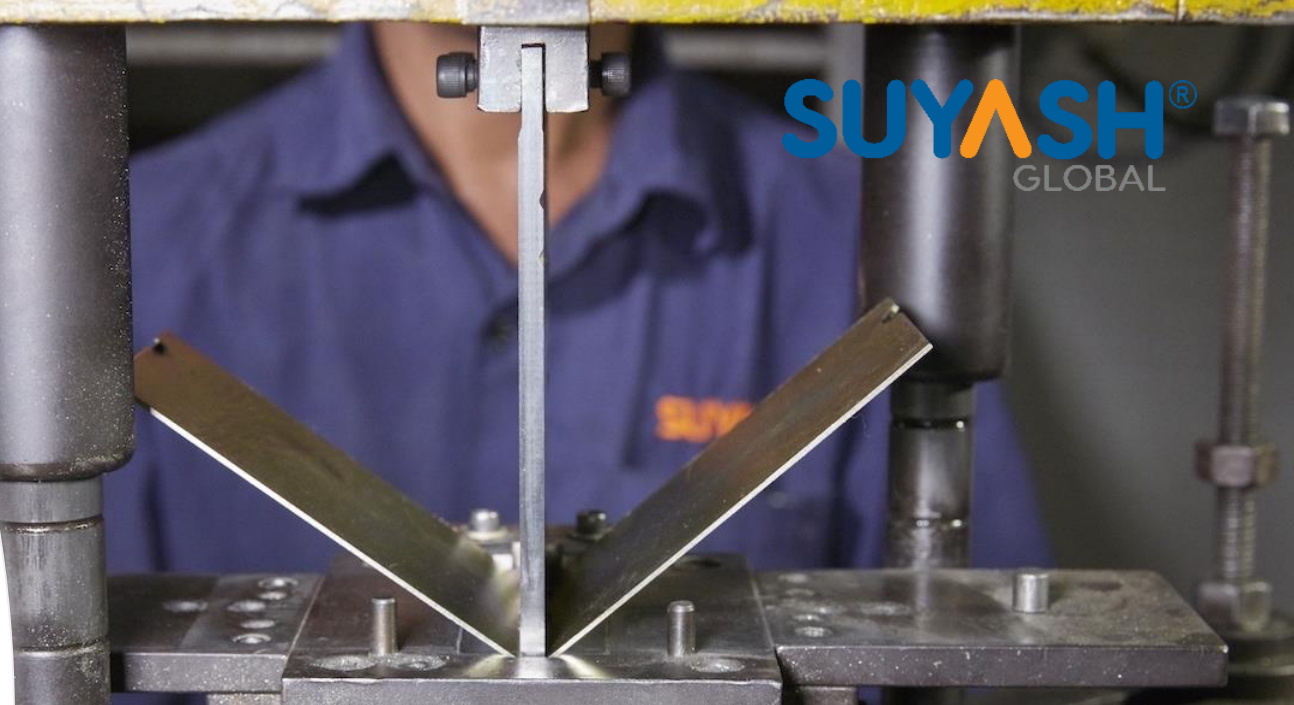
A solid orange vertical bar is located on the far left edge of the slide. A large, thin, white arc curves from the top center towards the bottom left, partially enclosing the central text.

What do we do?

What do we do?

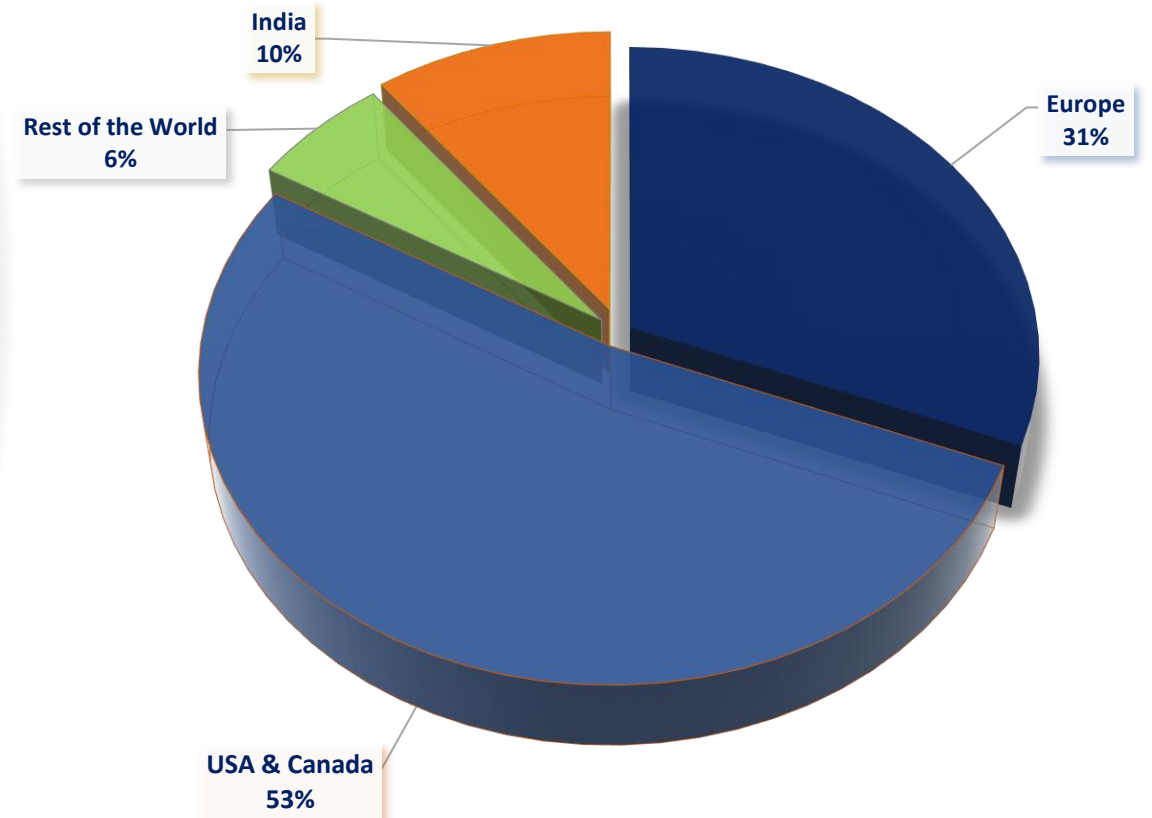
We are a Contract Manufacturing Company which provides the following manufacturing services under one roof:

- Precision Machining
- Sheet Metal Pressing & Stamping
- Tube & Pipe Bending
- Surface Treatment
- Welding
- Heavy Fabrication
- Assembly Services



What do we do?

- Exporting components & fully assembled products to Australia, Canada, Denmark, France, Germany, Norway, Poland, Spain, Sweden, UK & USA across various industry segments



What do we do?

Some of the industries we service are:

- Consumer appliances (Machined Components)
- Hydraulics & Water Supply (Machined Components)
- Perimeter Protection (Fence Components & Accessories)
- Diesel Storage Tanks & Fittings (Fully Assembled Tanks incl. Fabrication & Assembly)
- Warehousing & Packaging (Fully Assembled Products)
- Hospital Equipment (Fully Assembled Products like Wheelchairs, etc.)
- Switchgear (Sheet metal parts & Fully Assembled Switchgear)
- Building Industry (Assembled Products)

A solid orange vertical bar is on the far left. A large, thin white arc curves from the top left towards the bottom right, passing behind the text.

Infrastructure

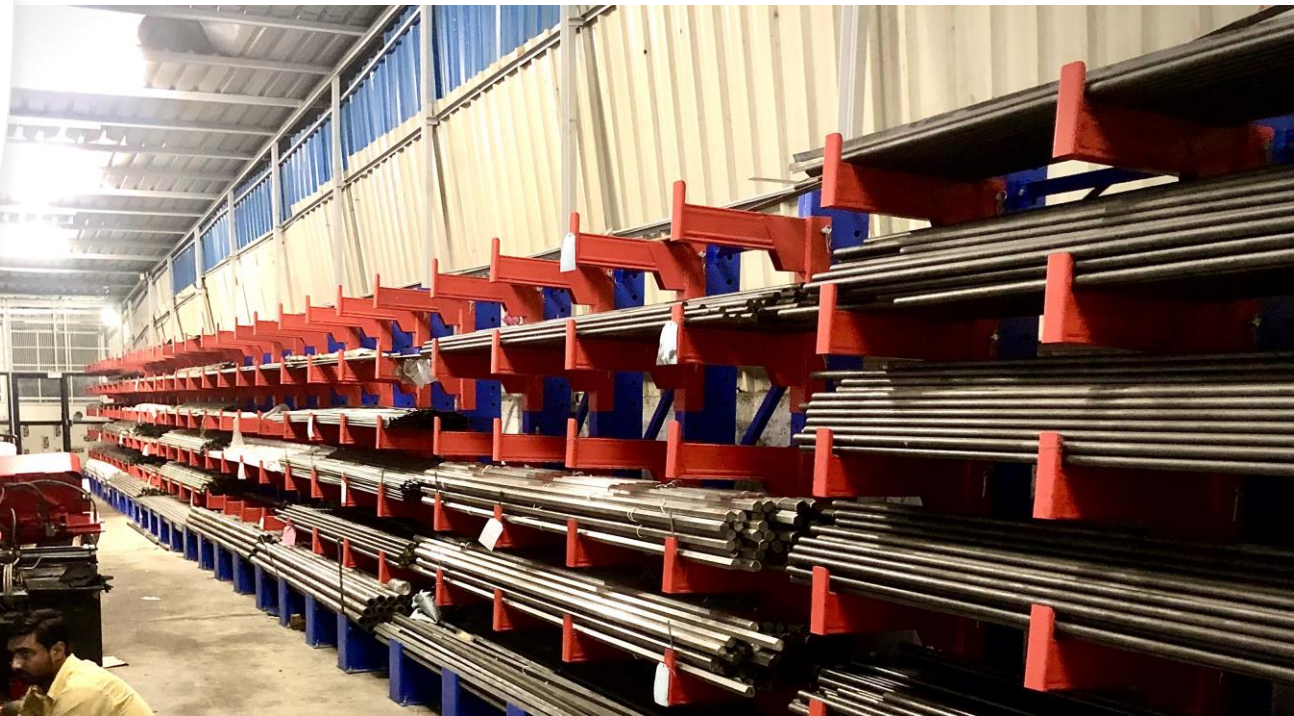
Infrastructure

- 6 manufacturing plants – Engaged in manufacturing machined components, sheet metal pressed parts, fabrication and manufacturing of fully assembled products. (Production area close to 110,000 sq.ft.)
- All 6 located close to a major seaport (Nhava Sheva Port, Navi Mumbai)
- ISO 9001:2015 and ISO 13485 certified by TÜV Nord
- Number of employees: 600+ (Including 70+ engineers)
- Full fledged Engineering department with latest CAD/CAM software & PDM for design data management

Infrastructure

Machined Components Facility:

- Machine shop covering over 20,000 sq.ft. equipped with around 65+ CNC Turning Machines including sliding head lathes, turn-mill centers, 7 VMCs, CNC Drilling Machines, etc. of reputed brands including DMG, Mazak and Tsugami.
- Large raw material storage and cutting capacity with Amada bandsaws



Infrastructure

Machined Components Facility:

- Also equipped with machines like centerless grinding & thread rolling
- Capacity of turning dia. up to 100 mm & length 300 mm
- Capability of handling variety of raw materials



Infrastructure

Machined Components Facility:

- Well qualified engineering team capable of defining & refining manufacturing processes
- Use of simulators for programming
- Use of latest design softwares like TopSolid, Solidworks, CAD & CAM and SolidWorks



Infrastructure

Sheet Metal Components Manufacturing Facility:

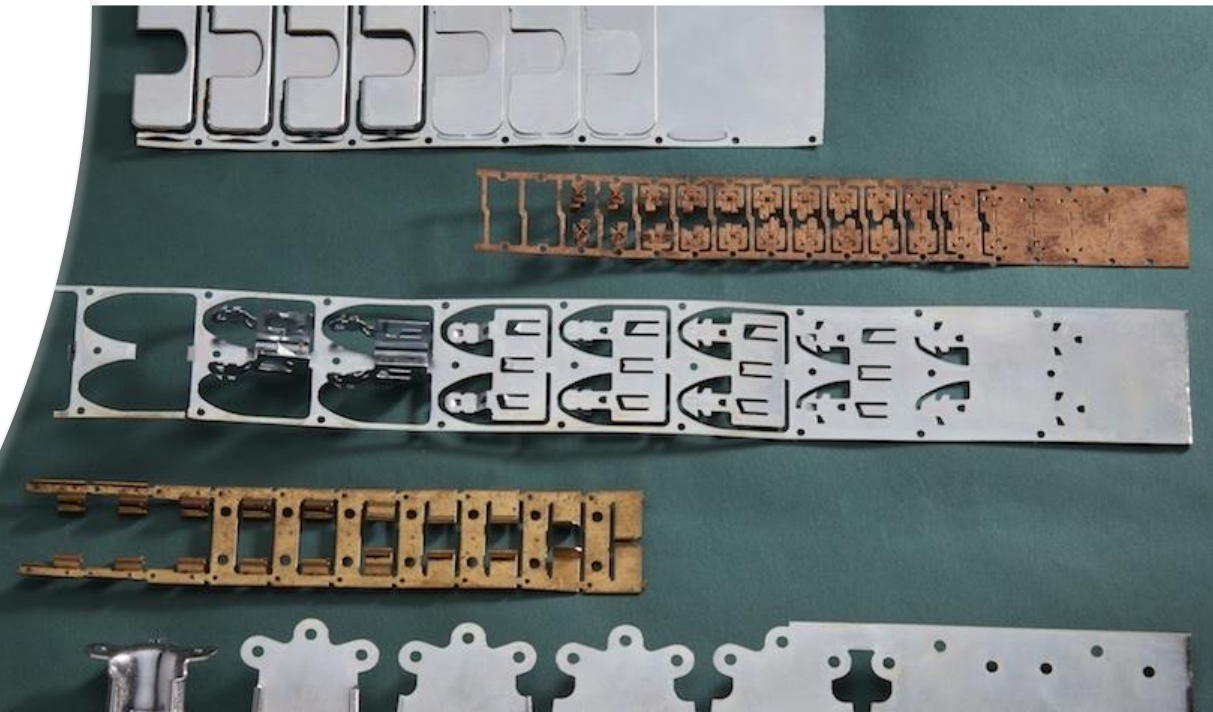
- Press shop equipped with presses ranging from 30 tons to 160 tons capacity with capability of pressing sheet metal from 0.2 mm to 10 mm
- Capability of manufacturing small to very large components required for perimeter protection & fuel storage tanks



Infrastructure

Sheet Metal Components Manufacturing Facility:

- Fully equipped Tool Room for manufacturing and maintaining press tools
- Capability of designing press tools
- Experience of handling progressive dies



Infrastructure

Tube Bending, Welding & Fully Assembled Product Manufacturing Facility:

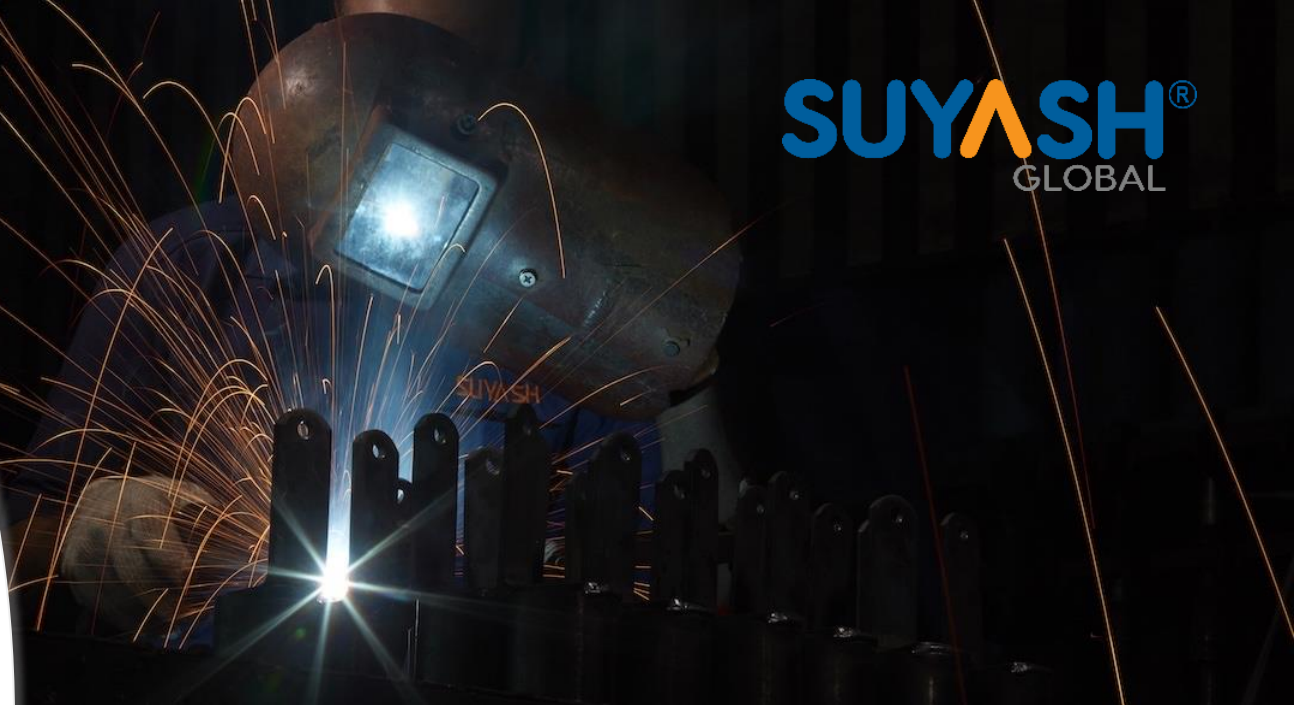
- Equipped with tube bending machines up to 38 mm dia. tubes
- Capability of welding stainless steel & carbon steel tubes
- Capability of assembling complete product



Infrastructure

Fabricated Products Manufacturing Facility:

- Equipped with 2 x 130 Ton Amada press brake
- Laser cutting machine with working area of 4000 mm x 2500 mm
- Capability of assembling complete product

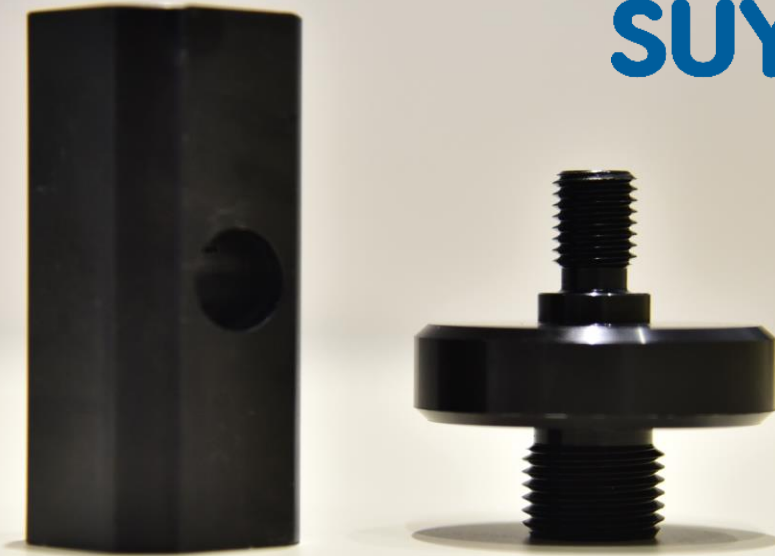


Infrastructure

Surface Treatment Facility:

- In-house automated plating plant being installed for zinc, zinc-nickel & black zinc coating
- Inhouse Shot blasting & painting booth

SUYASH[®]
GLOBAL



Infrastructure

Quality Assurance:

- A well-equipped QC facility
- Vision Inspection System
- 3D CNC CMM with Renishaw PH 20 probing system



Infrastructure

Quality Assurance:

- Mitutoyo Surface Roughness Tester
- Mitutoyo Contour Measurement System
- NDT facility including ultrasonic testing
- 2D Height Gauge
- MPI Facility
- Salt Spray Testing



Surface Roughness Tester



2D Height Gauge

To sum it up . . .

Suyash, headquartered in India, with its expertise in a variety of manufacturing processes under one roof, experience in supplying a wide range of precision engineering components and assemblies to various industry sectors across Europe, America, Middle East and Asia Pacific, offers quality, consistency, on-time delivery and above all, cost efficiency in its quest for the Ultimate Customer Delight.

Our coordinates

Suyash Global Pvt. Ltd.,

A-477, TTC Industrial Area,

Mahape, Navi Mumbai, 400701

Maharashtra, INDIA

sales@suyash-global.com

www.suyash-global.com



A solid orange vertical bar is located on the far left edge of the slide.

Thank You