

Corporate Culture

MISSION

Co-creating a smarter future across industries through innovative AIoT vision systems.

VISION

To become a global leader in AIoT vision system solutions.

VALUES

Customer

Putting customers first by providing tailored solutions and services.

Agility

Continuous learning, efficient collaboration, and mission-focused execution.

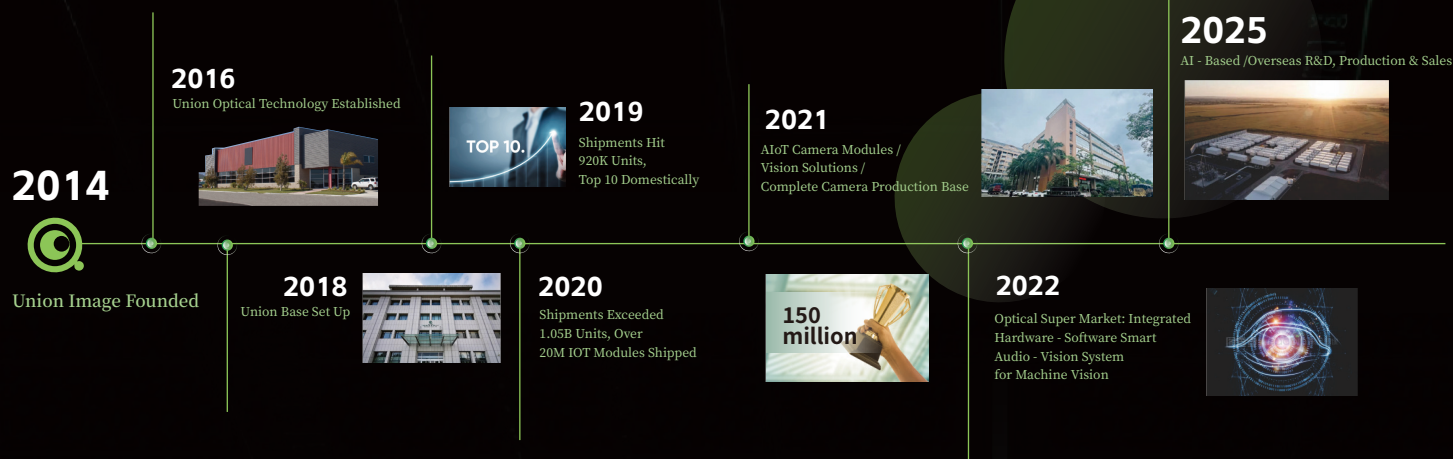
Responsibility

Putting customers first by providing tailored solutions and services.

Value

Guided by value creation, pursuing excellence and sustainable growth.

Company Development History



Company Premises



Awards & Certificates



Company Introduction

Union Image is a platform-based technology company with vision as its core capability. We deliver end-to-end products and solutions ranging from camera modules and vision systems to complete imaging devices. Through POC Studio, we rapidly validate and bring AI-era ideas into real-world applications.

We are turning vision into the infrastructure that enables AI to enter the physical world—empowering industries worldwide with smarter solutions and making Vision for All a reality.

Core Capabilities

Optical Design » Hardware-Software Co-Design » Image Tuning »
Algorithm Customization » Intelligent Manufacturing » Mass Production

Continuously Built Vision System Knowledge Base

POC Studio | Validated POC Delivery in 3 Weeks

VISION FOR ALL



ID: Union Image



ID: Union Image



ID: Union Image



ID: Union Image



Union Image Co., Ltd

Tel- 136 5724 5308 / 147 9281 5634

Add- Building A2, Dingbao Hong Green Hi-Tech Park, Shiyuan Street, Bao'an District, Shenzhen, China.

E-mail- UnionImage@unionimage.com.cn

Web: www.unionimage.com

Depth Camera Series

Depth cameras allow machines to perceive distance, shape and space —turning vision into real-world understanding.



RGB&TOF
Pulse-I200u



Stereo Depth Camera
Eagle-B200u



Short-Range Stereo Depth Camera
Eagle-B100u



Structured Light Depth Camera
Prism-S100u

Interfaces: USB / Ethernet / GMSL2 + FAKRA

Edge Camera Series

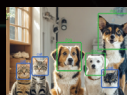
Unimage Pi



Unimage Pi includes models B2/A1/A5, with dual C906 RISC - V CPUs, a 200W HDR sensor, and a compact size of 32mm×32mm. Equipped with a high - performance TPU, it supports 9 major AI detections such as safety helmets, human faces, and license plates. The model is lightweight, with short latency and high accuracy, suitable for multiple scenarios.



Safety Helmet Detection



Cat/Dog Recognition



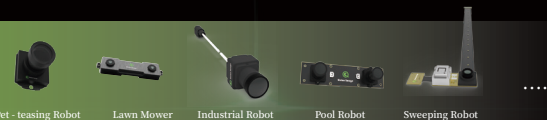
License Plate Recognition



Pose Detection

>> Camera Modules

Robotics



AI Wearables



Smart Home



Smart Business



Smart Imaging



MORE.....

>> Complete



Union Image

AIoT

VISION SYSTEM PROVIDER



VISION FOR ALL