

Company Introduction



Reception



FOG Line



BL Assembly Line



Founded

2007



Area

Floor area: 1,500 m²

Net area: 10,000 m²



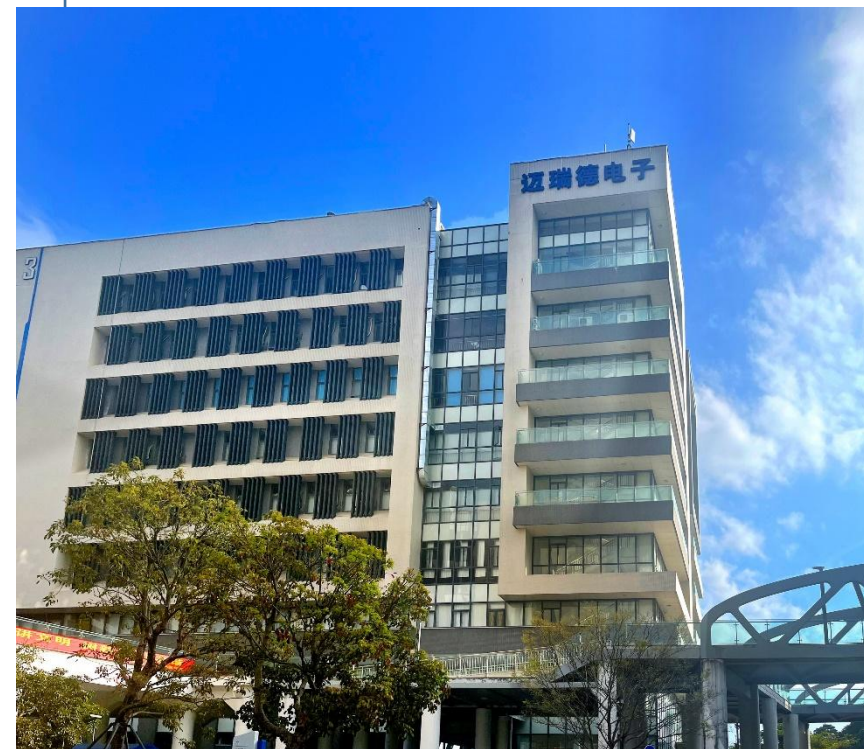
Team

300 employees
30 R&D engineers
40 QA engineers



Market

Outdoor Applications
Industrial Control
Smart Home
Automobile (Before-market)



Enterprise Vision



**To be a world-class provider of
display solutions.**



Business Philosophy

Integrity-based
Quality First
Rigor and Profession
Pursue Excellence

Core Value

Efficiency Comes from Diligence

Enterprise Quotes

Make all-out Efforts



ISO9001

IATF16949

ISO45001

ISO14001

QC080000

1. TFT LCD CELL Customization Ability:

In deep cooperation with upstream manufacturers such as [CTC, Lingzhu \(GP\) and HIMAX](#), we have mastered the working principle and process capabilities of TFT LCD cells, and have customized a number of differentiated TFT LCD cells.

Showcase 1:

2019 Customized 9“ Special TFTCELL for Automotive Grade Streaming Rearview Mirror

Dozens of projects such as Buick Commercial Vehicle GL8, BYD, Avita, etc. have been successfully mass-produced, a benchmark in the streaming media industry:

Resolution	Luminance	Display Mode	Interface	Operating Temp.	Proportion	Viewing Angle	Response Time
1920*384	5500nits	IPS	LVDS	-30°C ~ 85°C	5:1	85/85/85/85	25msec

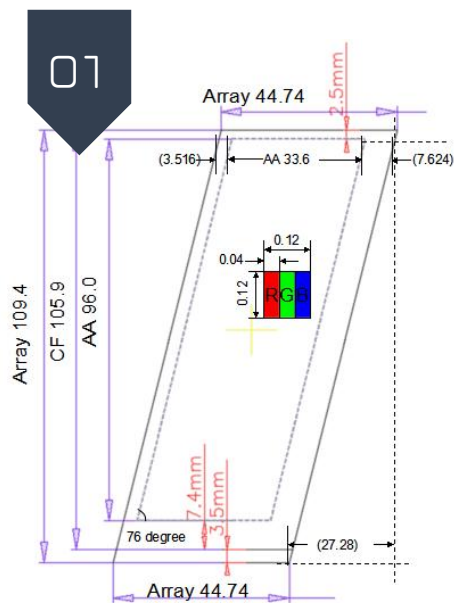
Showcase 2:

Customized 3.9-inch parallelogram TFT display module installed

outside the B-pillar of the car

—Launched to the Cadillac series

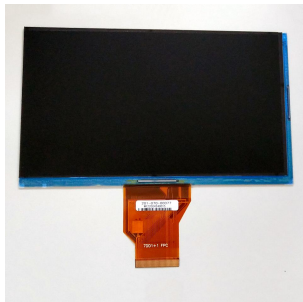
(Intelligent Car Door Lock: face recognition/ password/ fingerprint equipped)



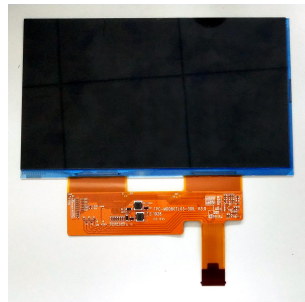
2. FPCA Design Ability

Accumulative rich experience, ranging from 0.96" to 15.6", from MCU, RGB, LVDS to MIPI, from single IC to multiple ICs

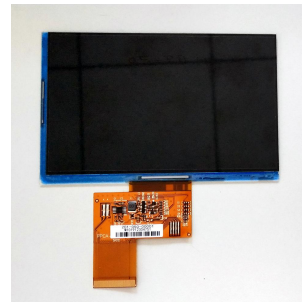
Voltage conversion (DC-DC) ICs, timing control (TCON) ICs, backlight driver (LED DRIVER) ICs, RGB to LVDS conversion



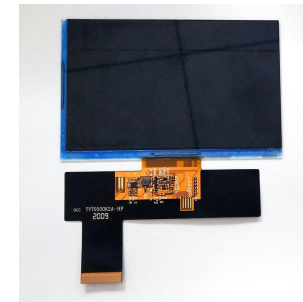
Single source IC



Multiple Source IC



With Electronic Components



With EMI Film



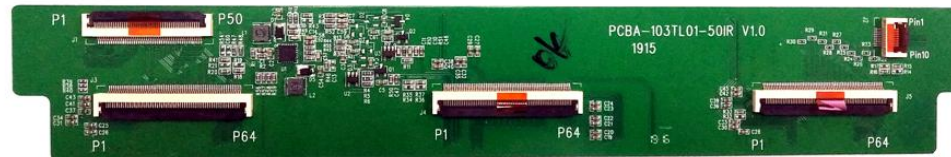
With Connector



VLDS into MIPI



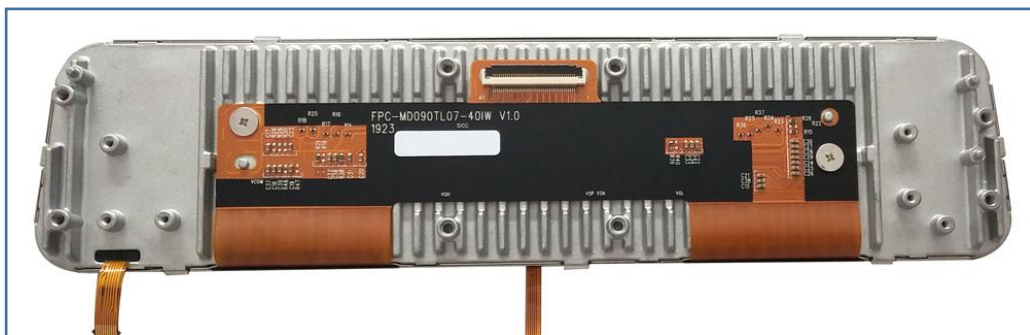
T-CON Plate



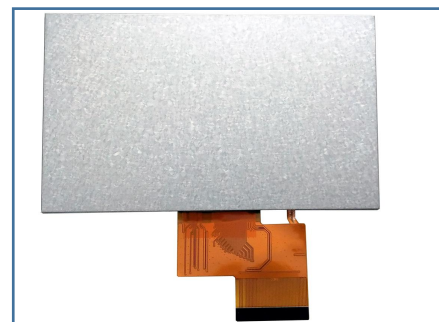
DC-DC / TCON /
LED Driver

3. Backlight Design Ability

MIND is equipped with a backlight source design team capable of both design and manufacturing backlights in varied shapes, sizes, wide temperature ranges, and high brightness, which is one of our core competitive edges.



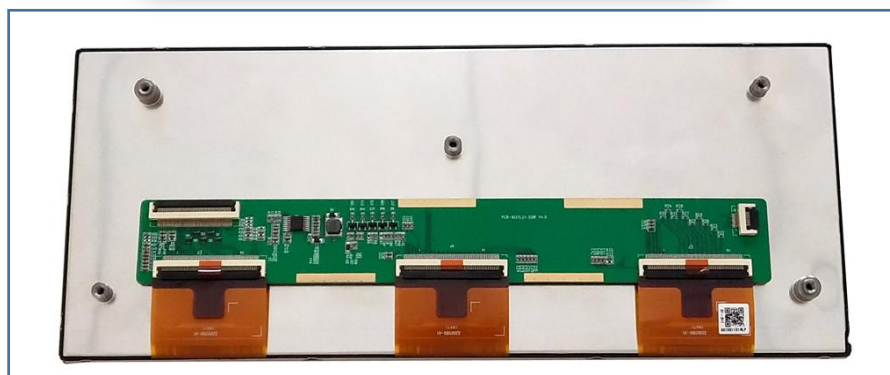
**Aluminum Casting
+ Aluminum Casting+Heatsink**



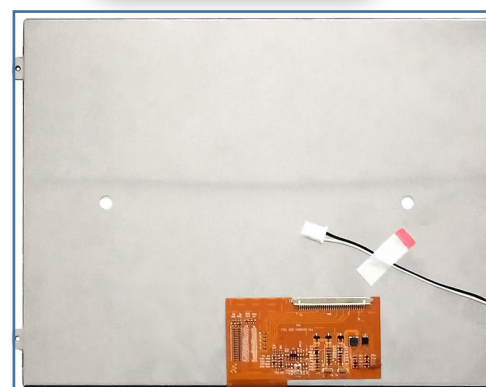
Aluminized Zinc



Plasthetics



**Aluminium Plate
+ Registration Mast**



**Stainless Steel
+ Ear Located**

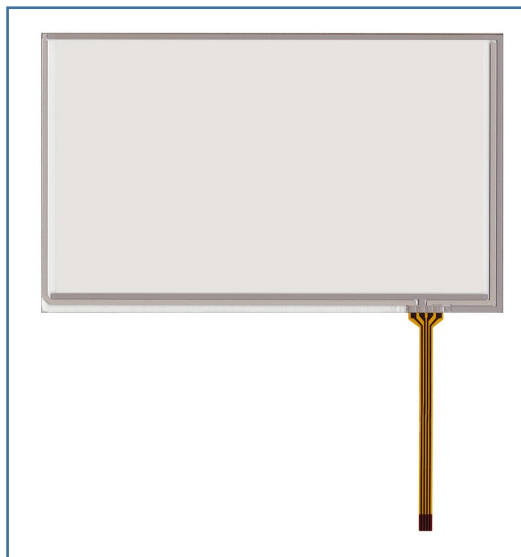


**Glue-Iron
Integrated**

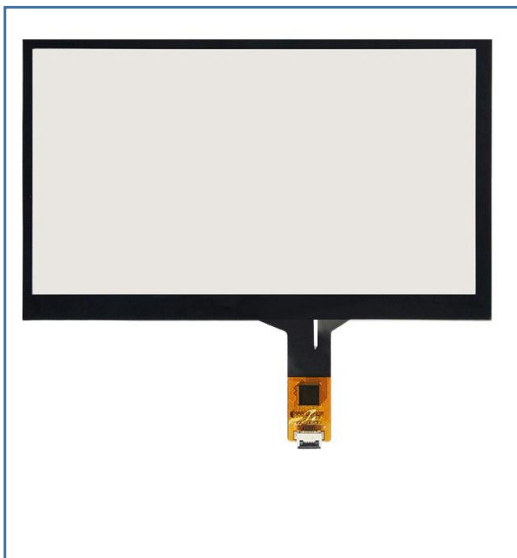
4. Touch Panel Design Ability (Outsourcing)

RTP, CTP, G+G, P+G, G+F, G+FF,

Whole black, special-shaped, air-bonding, direct bonding.



RTP



CTP COB



CTP COF

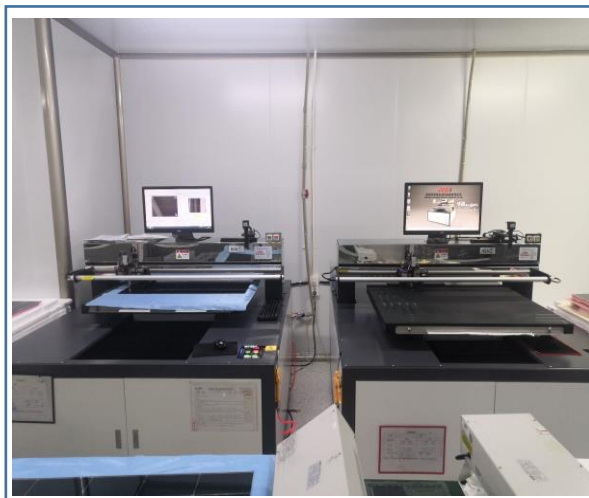


Special shape+all
black

1. FOG Production

Equipped with cutting and offset printing workshops,
effective quality control and the fast response from supply chains.

Two fully automatic COG and FOG production lines,
with a daily output of over 10,000 units per shift.



Cutting Machine



Full-automatic grinding
and washing mounter



Full-automated double-sided
and
double-pcs FOG production line



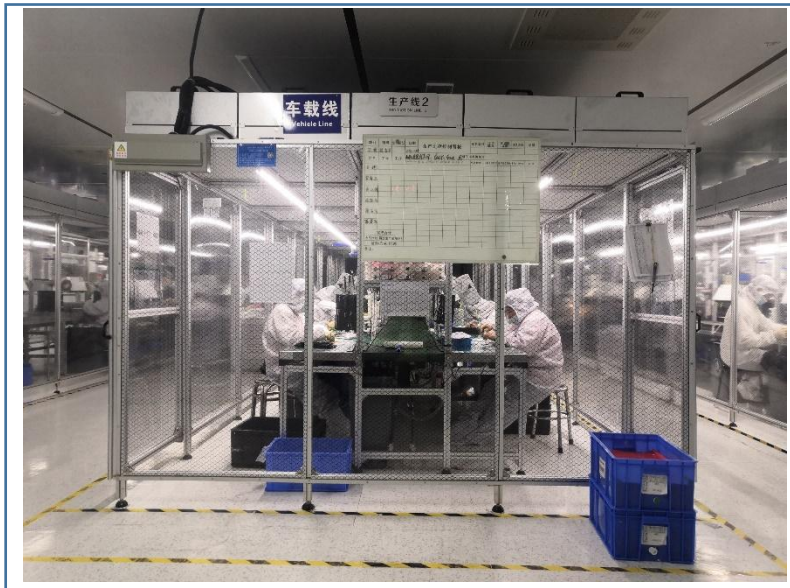
Full-automatic multi-sided
and
multi-pcs FOG production line

2. BL Production

At present, several backlight assembly lines are equipped with clean booth, which can achieve local dynamic 1,000-level cleanliness and effectively reduce dust.

The daily production capacity of a single line can reach 6K.

The workshop is extensible, convenient to add additional the production line.



3. Direct Bonding

Equipped with a 5~15.6" OCA full-fit production line,
reduce outsourcing, and enhance integration capabilities and yield rate.

Single-shift daily capacity: 1.5K.

A large-scale bonding production line for curved screens and multi-screen control,
with integrated production capacity for high-end automotive projects.



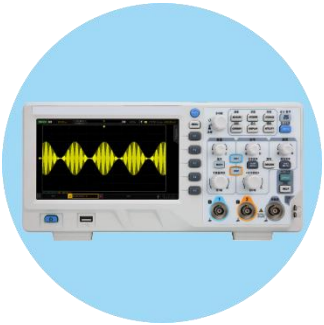


HMI



Electronic Cluster

Industrial Application



Instruments



CNC Machine



Water, Dust, and Wind-proof



Industrial Control

☐ Size

0.96 ~15.6 inch

☐ Brightness

Up to 2600 nits

☐ Operation Temperature (°C)

Up to -40~85

☐ LCD Features

EMI Shielding/ High Stability/ High Resolution/ High Brightness/
Wide Temperature/ Long-term Supply

☐ Touch Solution

All Black (Homogeneous black) / AG AR AF Coating/ Support
Waterproof and Glove/ Anti-UV Ink





Ventilator



Infusion Pump

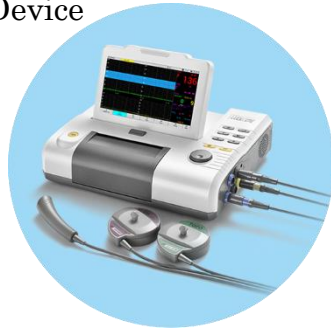


Diagnostic Device

Medical Application



Patient Monitor



Fetal Monitor



Smart Medical Monitor

❑ Size

2.8 ~15.6 inch

❑ Brightness

Up to 1000 nits

❑ Operation Temperature (°C)

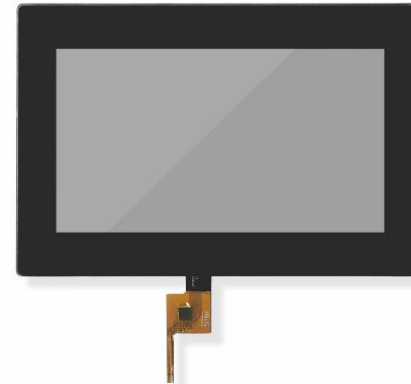
Up to -40~85

❑ LCD Features

High Resolution/ High Brightness/ Wide Temperature/ EMI Shielding/
High Stability/ Long-term Supply

❑ Touch Solution

RTP/CTP (support waterproof and glove, antibacterial, durable)



Products in EV Charger



EV Charger

❑ LCD Features

High Resolution/ High Brightness/Wide Temperature/ Wide Viewing Angle/ EMI Shielding/Long-term Supply

❑ Touch Solution

All black (Homogeneous black) / AGAR AF Coating/ Support Waterproof and Glove/ Anti-UV Ink/ Durable/RA Test 1000hrs



Products in CMS for Big Car



Features:

High Resolution

High Brightness

Wide Temperature

Wide Viewing Angle



MIND CMS module compliant with ECE-R46 and GB15084 standards.



10.1"

Size: 10.1inch

Resolution: 1280*720

Brightness: 2000 nits

Operation Temperature (C): -30~85



12.3"

Size: 12.3 inch

Resolution: 1920*720

Brightness: 1200 nits

Operation Temperature (C): -30~85



15"

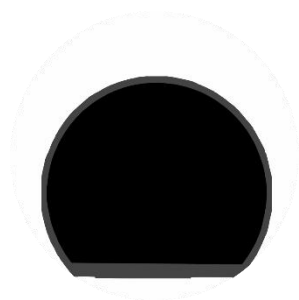
Size: 15 inch

Resolution: 1920*720

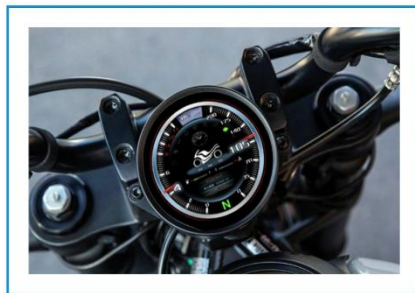
Brightness: 1200 nits

Operation Temperature (C): -30~85

Products of Special Shape



3.54"



Motocycle



4" parallelogram



Cadillac Intelligent Car Door Lock



Bar Type



Loudspeaker

❑ Size

1.22~14.9 inch

❑ Brightness

Up to 1200 nits

❑ Operation Temperature (°C)

Up to -30~85

❑ Features

High Resolution/ High Brightness/ Wide Temperature / Wide Viewing Angle/ Special shape LCD/ Long-term Supply

Appreciated



Shenzhen Mind Electronics
C o m p a n y P r o f i l e

WEBSITE:

<http://www.szmind.cn>

TEL: (86)0755-81718591, 81718869, 28196738

FAX: (86)0755-81755216

EMAIL: sales@szmind.cn

Headquarter Address:

Floor 2-7, Building 3, Fashion Brand Industrial Park, Ebu town, Shenshan Special Cooperation Zone, Shenzhen, China

Marketing Center Address:

RM506 Block A, DELUX Science and Technology Industrial Park, GuanLe Road, Guanlan, Longhua District, Shenzhen, China

