



CUSTOMIZED EMBEDDED SOLUTIONS

Engineering | Development | Testing | Hardware Design | Quality Assurance

> ABOUT US

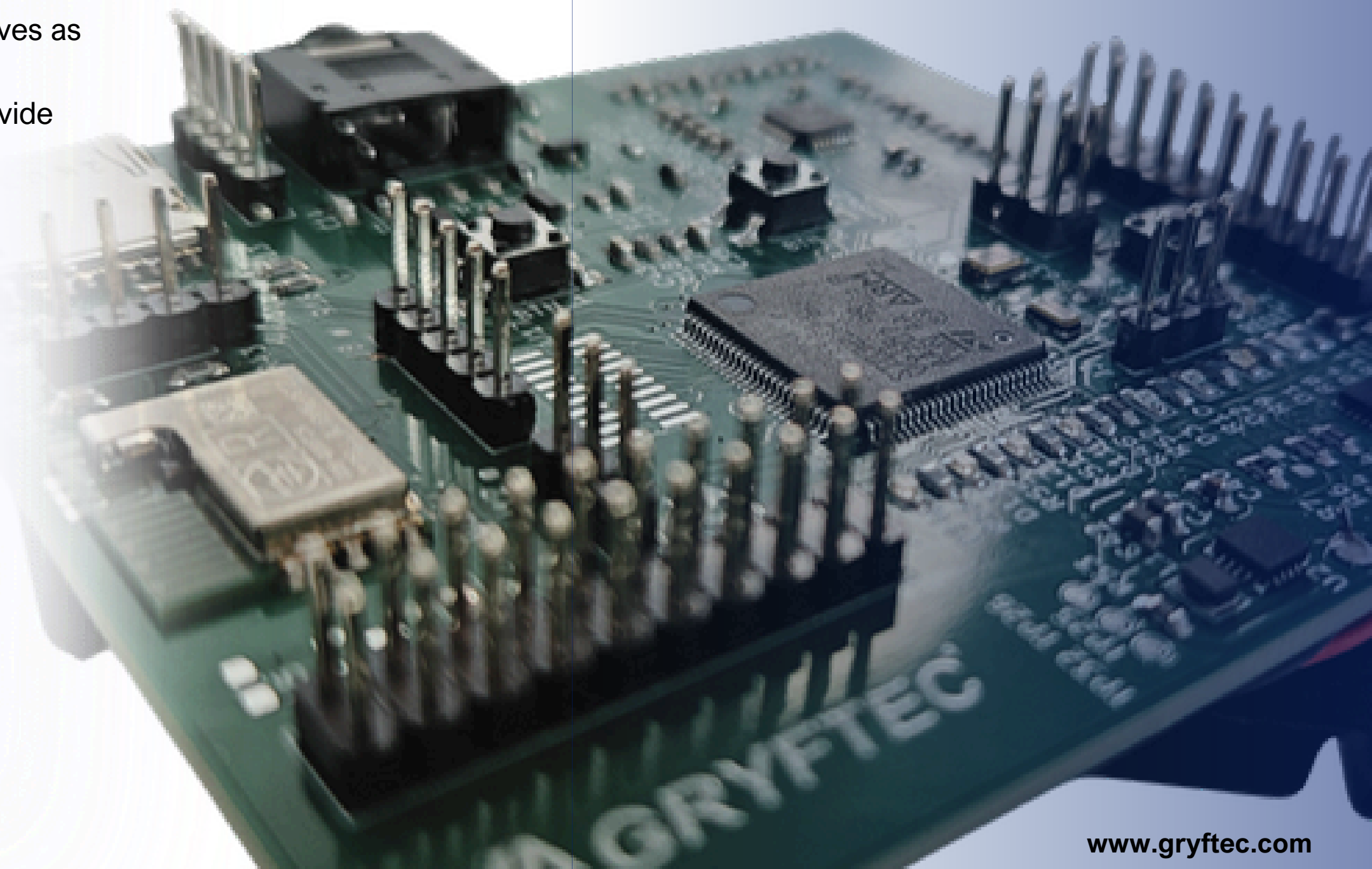
GRYFTEC is a company founded in 2004, based in the city of Szczecin, in the northwest of Poland. The company operates as an engineering office, offering a wide range of services from the design and development to the implementation and testing of both individual components and complete hardware and software solutions.

Based on the methods and implemented technologies, we see ourselves as problem solvers in microprocessor technologies. We believe that specialization allows us to achieve the highest level of quality and provide the best technical support to our clients.

+20
years in the business

+50
employees

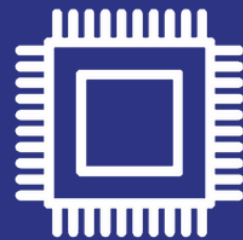
2
locations



SERVICES



**SOFTWARE
DEVELOPMENT**



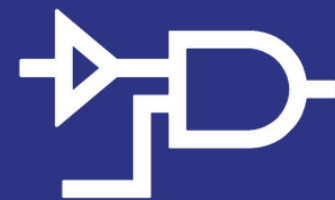
**EMBEDDED
SYSTEMS**



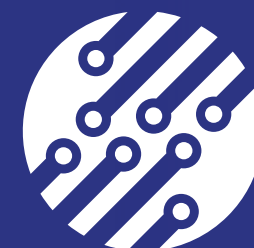
TESTING



**MOBILE
TECHNOLOGIES**



**FPGA
DESIGN**



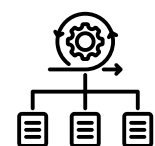
**HARDWARE
DESIGN**

TECH STACK



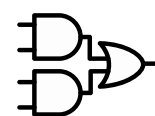
OPERATING SYSTEMS:

FreeRTOS, Linux, Windows Embedded, MacOSX, iOS, Sciopta, QNX



FRAMEWORKS:

Unity, Objective-C, .NET, QT



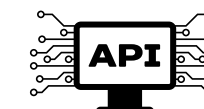
HARDWARE DESCRIPTION LANGUAGE:

VHDL/Verilog development for CPLD/FPGA



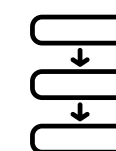
TOOLS:

Lauterbach TRACE32, Powervision Configuration Studio, NI Teststand, Ni LabView, Vector Tools (Canoe, Canalyzer, vTestStudio), Testlink, PTC Windchill RV&S (formerly Integrity) IBM Rhapsody, Cantata, Astree, ETAS INCA



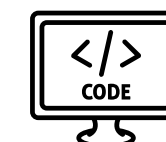
INTERFACES:

Ethernet, CAN, RS422, RS485, I2C, SPI, USB



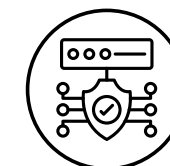
METHODOLOGIES:

V-model, SCRUM, AUTOSAR, PRINCE2, ISTQB, UML Automotive SPICE



PROGRAMMING LANGUAGES:

C, C++, C#, Python, Assembler, JAVA, Swift, Objective-C



PROTOCOLS/STANDARDS:

Modbus, JTAG, CANOPEN, SAE J1939, NMEA2000, IEC 61508, Ethercat, TCP/IP, UDP, ASAM, MISRA C

OUR TEAM

EMBEDDED SOFTWARE DEVELOPMENT

- Embedded C/C++, Assembler, development
- Software debugging
- HMI/GUI development
- Driver development
- PC interface development
- Performance analysis
- UML workflow design
- Obsolescence engineering
- BSP

DESKTOP SOFTWARE DEVELOPMENT

- C/C++, C#, JAVA development,
- Database access interface
- GUI development
- Integration with 3rd party tools
- UML workflow design
- Python/VBS scripting
- Data converters
- Obsolescence engineering

HARDWARE DESIGN

- Embedded electronics design
- Schematic capture, PCB layout, and circuit simulation
- Obsolescence engineering, reengineering of existing solutions to comply with changing industry standards
- Preparation of manufacturing documentation
- Maintenance of developed products
- Testing and debugging of hardware prototypes

EMBEDDED SOFTWARE TESTING

- Module test
- Software integration test
- Device test
- System test
- Test automation
- Software in the loop
- Test framework development
- Test environment design for device and systems test



QUALITY ASSURANCE

- Maintenance of ISO 9001:2015
- Taking part in reviews
- Maintenance and updating of documentation mainly related to the verification (testing + development)

FPGA DESIGN

- Design development
- Testbench creation and waveform analysis
- Design implementation and synthesis (place and route + synthesis at development unit (board))
- Timing analysis (tool objected)

GET IN TOUCH



• HEADQUARTERS:

GRYFTEC Embedded Systems Sp. z o.o.
1 Maja 38
71-627 Szczecin, Poland

+48 91 85 11 660
info@gryftec.com

• BRANCH OFFICE:

al. Monte Cassino 6
75-412 Koszalin, Poland

