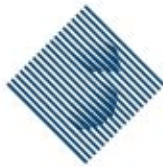




BEYOND AIR, WATER, AND TIME



SEÇİL
KAUÇUK

CONSTRUCTION

 > www.seciltr.com  > [secil.kaucuk](https://www.instagram.com/secil.kaucuk)  > Seçil Kauçuk A.Ş.

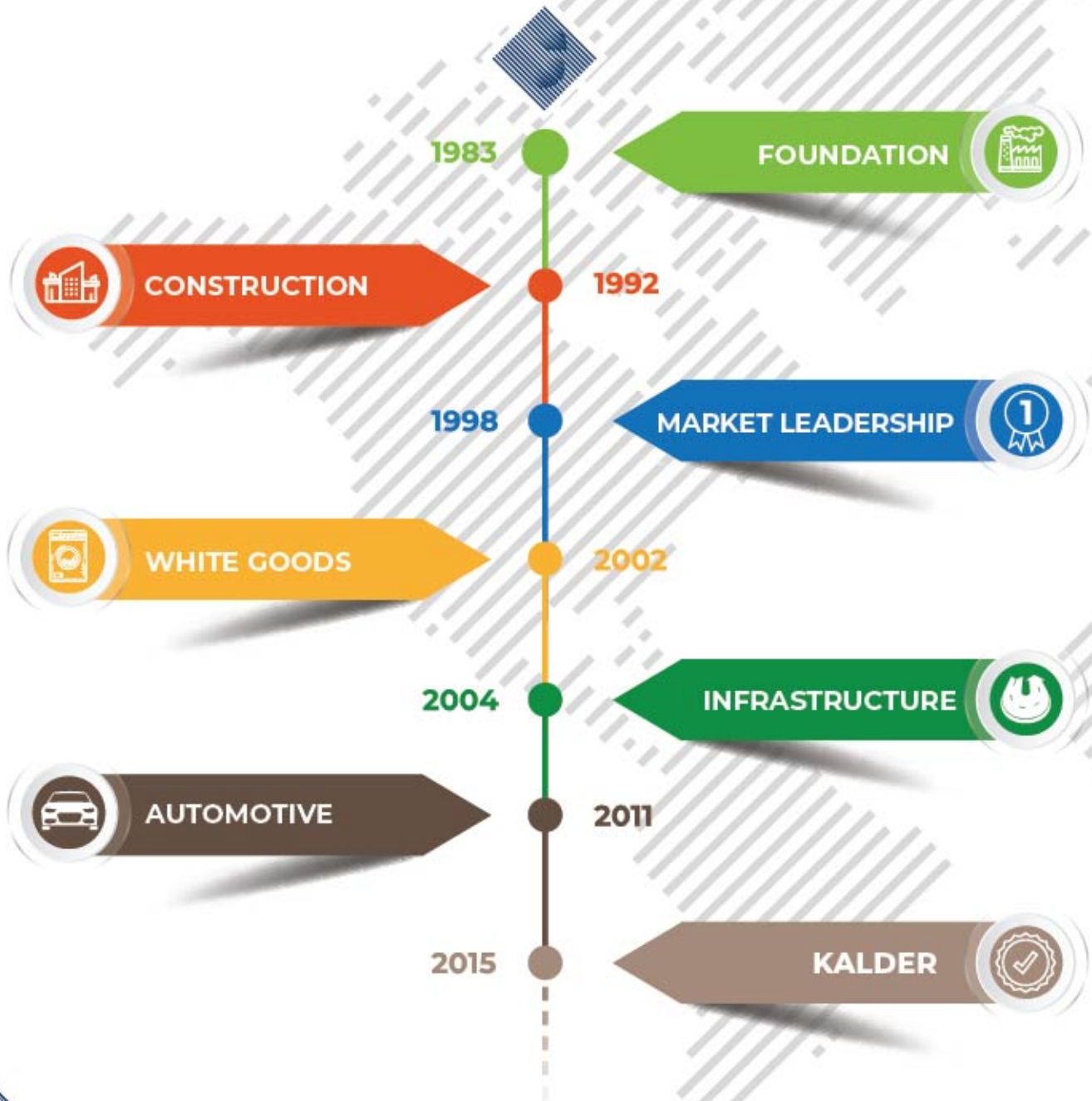


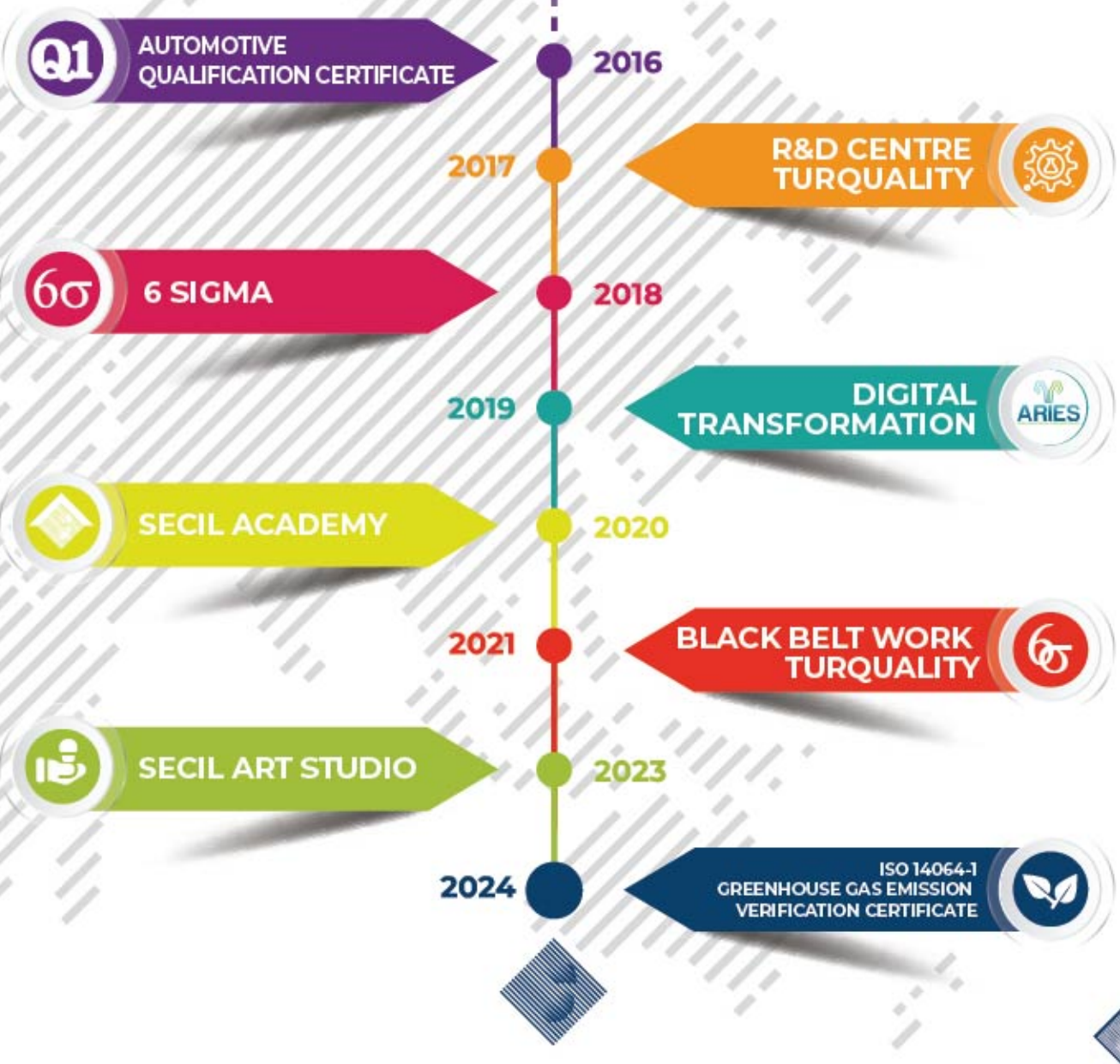
Through our production facilities in Türkiye where we prioritize quality, success and innovation, we have been producing and selling products and services across various countries, particularly in the White Goods, Automotive, Construction, and Infrastructure sectors since 1983 when our journey to excellence began.

Seçil has established itself as a key player in the rubber gaskets industry, offering sector-specific solutions to Türkiye and many other countries. With national and internationally recognized quality certifications, Seçil continues to collaborate with accredited global quality institutions. Through advanced production capabilities and a robust logistics structure founded on the principles of "right place, right price, right quantity, right time," Seçil Kauçuk is at the service of world markets. The company has branched in Germany, Poland, Belgium, Sweden, the UK and Italy and exports to over 50 countries.

Operating on a 70,000-square-meter area, with approximately 30,000 square meters of closed production space, Seçil Kauçuk manages all necessary production processes in-house, from design and modeling to packaging. The company produces profiles in various specifications, particularly co-extrusion, using different-capacity extruders in shock tunnel microwave, salt bath, EPDM, TPV, and silicone lines. Seçil offers rubber components for its target industries using injection and compression processes, and integrates extrusion products with injection welding and garment processes.

Seçil Kauçuk's R&D division, which boasts one of the most advanced laboratories in the sector, became an official R&D Center in 2017. The company conducts quality control analyses for various sectors, focusing on both compound formulations prepared in mixing facilities and the final products, utilizing state-of-the-art technological equipment. In doing so, Seçil continues its quality journey by prioritizing continuous and sustainable development.







70+

M/Eur Consolidated Turnover

7Warehouses and Sales Offices in
6 Countries**10.000+**

Mould Portfolio

700+

Employees

30.000

Compound Production Capacity

1.000+

Prescription

5

Production Process

24.000Tonnes Extrusion Production
Capacity**300+**

Control Parameters

1

Accredited R&D Centre

2.000Tonnes Injection Moulding
Production Capacity**200+**

Test

50+

Export to 50+ Countries

350+

New Products Every Year

TÜRKİYE



CONSTRUCTION

- Aluminium Door Window and Facade System Seals
- PVC Door and Window System Seals
- Sliding System Insulation Seals (Flock Triex)
- Wooden Doors and Windows System Seals
- Building Entrance Doors
- Dilatation Seals
- Industrial Automatic Systems Door Seals



INFRASTRUCTURE

- Concrete Pipe Seals (Integrated Seal, Angel Seal, PS Seal, Spigot Seal, O-Ring Seal, Connector Seal (CO-EX))
- Corrugated Pipe Seals (Lale Gasket, Pipelife Seal)
- GRP Pipe Seals (Reka Seals, Fullface Seals)
- Motorway Seals (Concrete Motorway Seal)
- Tunnel Segment Seals



INDUSTRY & ENERGY

- Energy Transmission Lines Spacer Dampers
- Solar Energy Hot Water Panels, Glass Wicks and Fittings
- Prismatic Modular Water Tank Seals
- Modern Glass Greenhouse Seals
- Textile Yarn Ring Bobbin Holders
- Trailer and Refrigerated Body Seals
- Grain Steel Silo Seals
- Garage Doors and Sectional Door Seals
- Sanitaryware Sealing Seals
- Electrical Panel Seals
- Channel Seals
- Prefabricated Container Seals
- Automatic Revolving Door Systems Seals
- Steel, Pivot, Fire Door Seals



WHITE GOODS



- **Washing Machine**
 - Washing Machine
 - Boiler Inlet Hoses
 - Boiler Outlet Hoses
 - Detergent Box Hoses
 - Panel Seal
 - Air Vent Hose
 - Engine Hanger Tyre
- **Drying Machine**
 - Drum Back Wall Seal
 - Wheel Seal
- **Dishwasher**
 - Door Seal
 - Bottom Sealing Seal
 - Hopper O-Ring
 - Pump Reservoir Seal
 - Clapper Seal
- **Oven**
 - Front Cover Seal



AUTOMOTIVE



- **Dynamic Profiles**
 - Door Sealing Seals
 - Front Bonnet Sealing Seals
 - Boot Sealing Seals
 - Secondary Sealing Wicks
- **Static Profiles**
 - Movable Channel Glass Wicks
 - External and Internal Scraper Wicks
- **Other Profiles**
 - Lid and Sliding Glass Wicks
 - Low Pressure Unbraided Hoses
 - Bus Window Seals
 - Press / Injection Rubber Parts
 - Movable Channel Glass Wicks
 - External & Internal Scraper Wicks
- **Rubber Pulp**



WE ARE EVERYWHERE FOR YOUR



COMFORT EVEN IF YOU DON'T SEE US.



024 03:50



CERTIFICATES

ISO 14001 : 2015 - ENVIRONMENTAL MANAGEMENT SYSTEM

ISO 9001 : 2015 - QUALITY MANAGEMENT SYSTEM

TS ISO 3934 - CERTIFICATE OF CONFORMITY PRODUCED ACCORDING TO CONSTRUCTION GROUP SEAL STANDARDS

RAL GZ 716 - DOOR AND WINDOW SYSTEM QUALITY ASSURANCE

ISO 45001 - 2018 - OCCUPATIONAL HEALTH AND SAFETY MANAGEMENT SYSTEM

ISO 27001 : 2022 - INFORMATION SECURITY MANAGEMENT SYSTEM

ISO 50001 : 2018 - ENERGY MANAGEMENT SYSTEM

IATF 16949 - AUTOMOTIVE QUALITY MANAGEMENT SYSTEM

HYGIENIC CERTIFICATE - HYGIENIC CERTIFICATE

CSTB - CERTIFICATION OF QB36

FORD Q1 - GLOBAL FORD Q1

ISO 14064 - 1 : 2018 - CORPORATE CARBON FOOTPRINT REPORTING AND VERIFICATION

EN 681-1 - COMPLIANCE WITH INFRASTRUCTURE PRODUCTS TEST STANDARD

KOMO / KIWA - GASKET COMPLIANCE CERTIFICATE (EXCLUDING DRINKING WATER)

NSF - DRINKING WATER COMPLIANCE CERTIFICATE

SUSTAINABLE DEVELOPMENT TARGETS



- 18% Employees with Master's / Doctorate degrees
- Selected Campus > 40,000 hours of training (2023)
- Free online training for everyone
- University co-operation project
- Strategic competences matrix Project



- 292.000 person/year water treatment capacity plant
- Rain collection tank project
- 51.9% reduction in the amount of water used in production



- 33% Female Employees
- 22.7% Female Managers



CORPORATE INNOVATION

- 41 Turquality Projects

DIGITAL INNOVATION

- ERP (SAP S4 HANA)
- Business Intelligence
- Seçil Portal
- CRM (Customer Relationship Management)
- Seçil B2B
- Smart Factory Project

R&D CENTRE

- 143 R&D Project Support (2019-2023)



SUSTAINABLE DEVELOPMENT TARGETS



36 distinguished customers using high standard products with our certificates

- NSF
- KIWA
- MFPA
- FBS
- CSTB



- Carbon footprint studies
- CO2 reduction project
- ISO 14064-1 : 2018



- 5MW SPP *(30% of total consumption)
- 11% of 2023 electricity demand
- ISO 50001 Quality Certificate
- Sustainability reporting studies



- Animal feed production from food waste
- Compost plant



- 200+ happy customers with ethical working principle
- Membership to more than 20 Civil Society Organisations



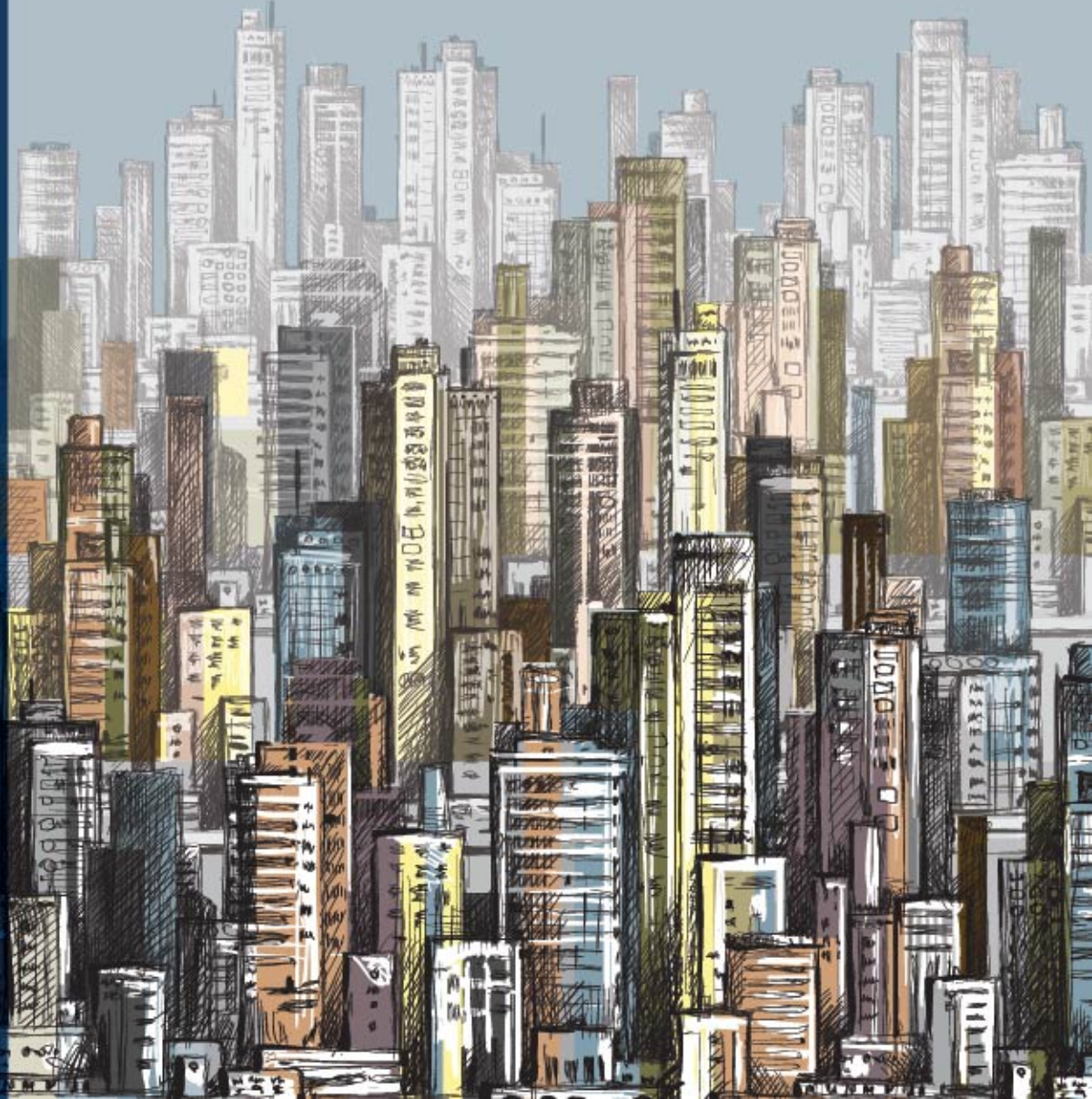
- Low Credit Risk
 - Credit risk assessment-2
- SALES DISTRIBUTION**
- Construction 43%
 - White Goods 25%
 - Compound 14%
 - Automotive 8%
 - Infrastructure 7%
 - Industrial 3%

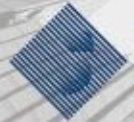




SEÇİL
KAUÇUK

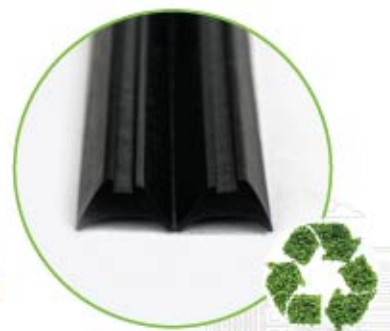
CONSTRUCTION
SOLUTIONS





SECİL | CONSTRUCTION
KAUÇUK



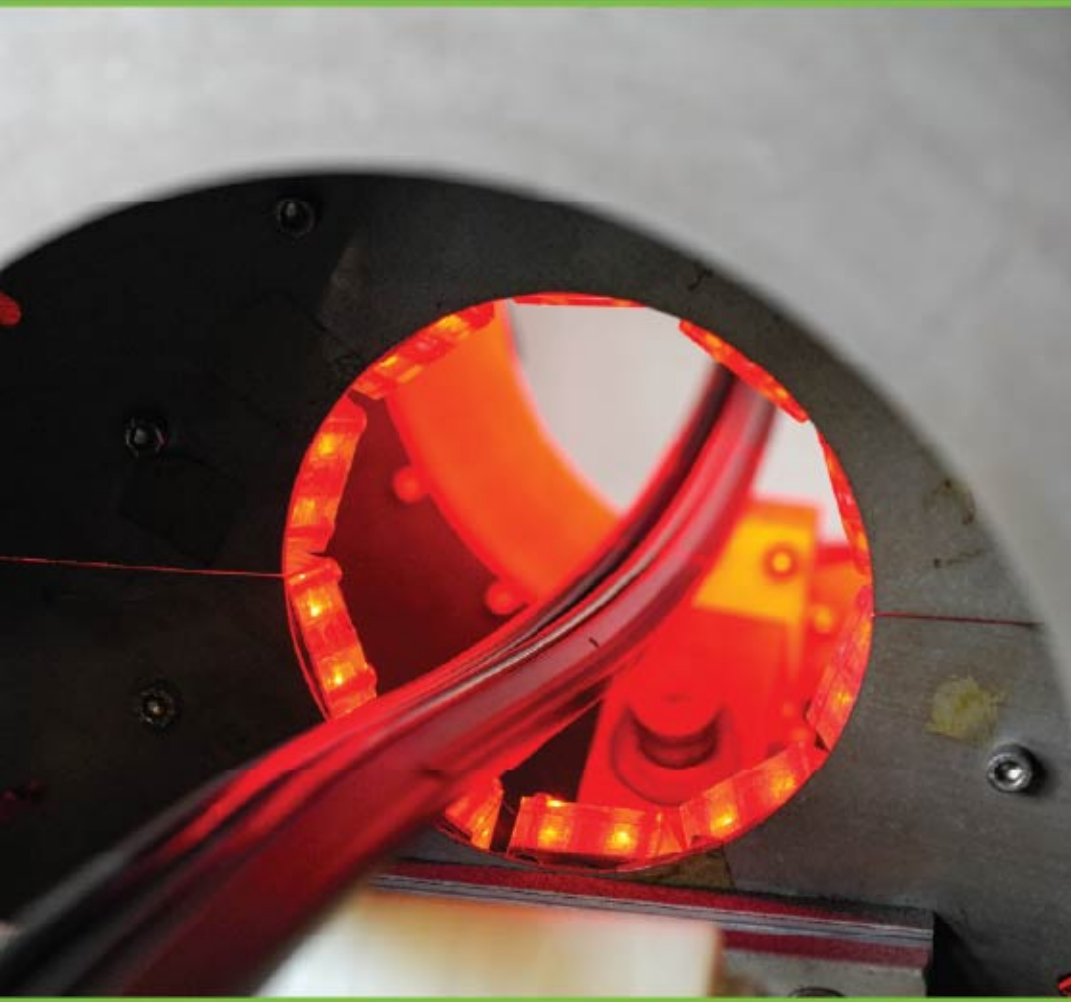




SUPERIOR FEATURES OF EPDM SOLUTIONS

- Resistant to climatic conditions,
- High UV resistance, resistance to thermal changes, flexibility at high temperatures,
- Excellent resistance to ozone and chemicals,
- Maintaining functionality for many years,
- High resistance to abrasion,
- Permanent deformation and high flexibility,
- Environmentally friendly, recyclable,
- Long Term Solutions - 30 years life expectancy,
- Stable prices for high value-added products

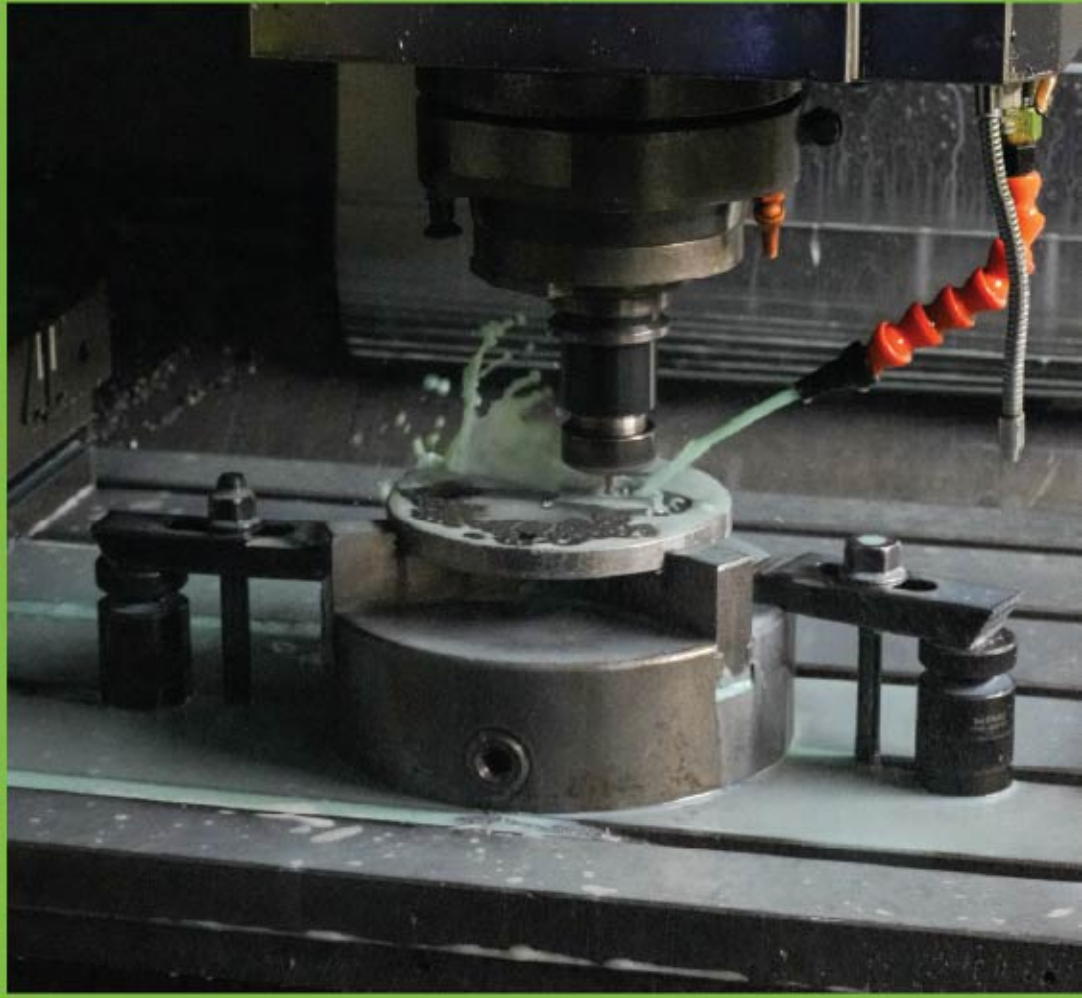




OUR CORE COMPETENCES

- Co-Design solutions for systems with 40 years of experience
- 5000 Moulds suitable for building systems
- 30,000 tonnes of compoud, 24,000 tonnes of extrusion and 2000 tonnes of injection products per year
- Recipes suitable for all climatic conditions
- Variety of aesthetically pleasing colours
- In-house production of test, confection, automation equipment
- Adapting Automotive, White Goods and Infrastructure solutions to adapt to the needs of the Construction sector
- Solution partnership with global system manufacturers





- Sustainable and customer-oriented logistics option thanks to the organisation in Türkiye and Europe
- Proactive approach using FEA and MARC simulation programmes
- Antibacterial, Antimicrobial, Antistatic and Antifungal solutions
- Electrical conductor and semiconductor solutions
- Fireproof black / coloured solid and sponge seals
- Solutions that react as a result of smoke and water contact in case of fire
- Flexible, Short and Safe delivery with high performance



STRUCTURE SEALING AUTHORISATIONS

MONO



High permanent deformation, resistance to climate conditions and ozone thanks to MONO EPDM

CO-EX COLOUR



Colour solutions that provide aesthetics with the dynamism of black

CO-EX SPONGE



Best performance in thermal conductivity thanks to the sponge

TRI-EX



3 solutions that guarantee your system with the use of different materials

SPONGE



Solutions to reduce thermal conductivity

DIFFICULT GEOMETRIES



Precise solutions that provide all kinds of insulation in facade systems



STRUCTURE SEALING AUTHORISATIONS

SILICONE



High temperature resistant solutions

TAPED



Easy installation solutions thanks to the tape

FLOCKED



Revolution in sliding systems with flocking

ROPED



Solutions to prevent stresses

PRE-CUT GASKETS



Solutions for sharp turning corners

CORNER and FRAME



Solutions that complement the functionality of centre seals in corners





DOOR WINDOW SYSTEMS AND FACADE SOLUTIONS

- ALUMINIUM SYSTEMS
- PVC SYSTEMS
- ALU-WOOD SYSTEMS
- BUILDING DOORS
- INDUSTRIAL DOORS
- SLIDING SYSTEMS
- GLASS BALCONY, PERGOLA AND ROOF SYSTEMS





ALUMINIUM DOOR, WINDOW AND FACADE SYSTEM SEALS

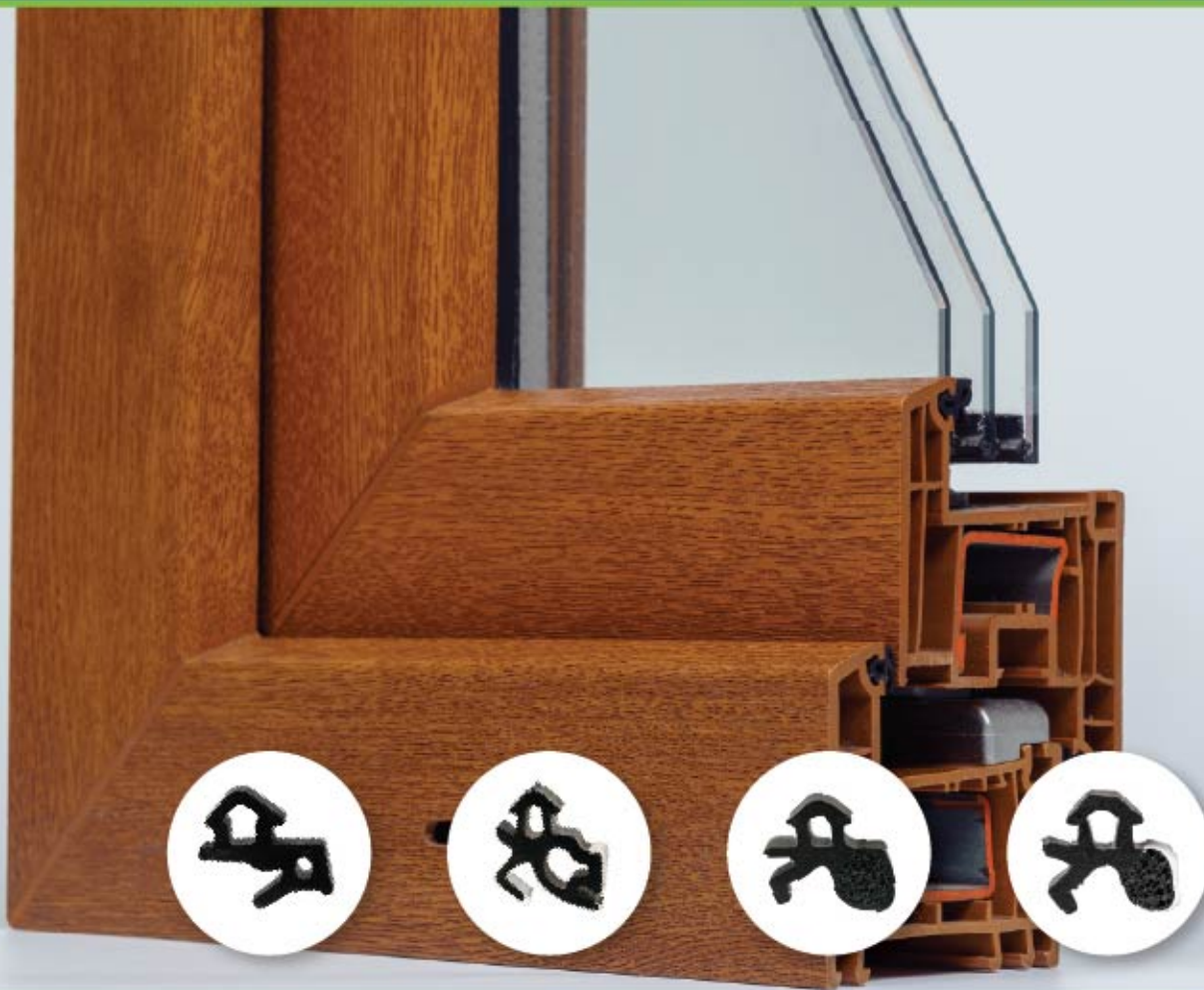
- Suitable for your entire system and guarantees your system, Mono, Co-Ex, Sponge, Flocked, Pre-cut solutions,
- Silicone compatible solutions in facade systems,
- Injection corners that complement the functionality of central seals in corner turns, frames with butt welding and injection technology that can be produced in all sizes, which provide sealing on the windows in the facade systems of skyscrapers,
- Purposeful functionality providing Low Thermal Conductivity, effective system insulation and sound absorption,
- Values of 0,090 - 0,14 W /mK in thermal conductivity,

- Difficult geometries in facade systems of high-rise buildings,
- EPDM and SILICONE solutions for harsh climatic conditions,

All Seçil seals,

- DIN EN 12365 - Sealing Performance
- DIN 7863 - Compound Standard
- TS EN 13501-1 (E, d0 and S2) flammability standard
- DIN 3302-1 measurement standards





PVC DOOR AND WINDOW SYSTEMS

- Resistance to -50, +140°C climatic conditions,
- Mono, Coloured, Co-Ex, Sponge and Flocked solutions,
- Sealing in critical corners,
- High performance in permanent deformation,
- Antibacterial, antimicrobial and antifungal solutions,
- Excellent acoustic and thermal insulation.





triex



SLIDING JOINERY INSULATION SEALS (FLOCK TRIEX)

- Thermal conductivity and sealing in PVC and ALUMINIUM sliding systems alternative solutions to BRUSH GASKET,
- Tailor-made co-design solutions,
- Flock surface tested in accordance with automotive standards,
- Maximum performance in water, sound and wind,
- Low lambda value in thermal conductivity,
- Fast and easy assembly thanks to the rigid dome.
- Revolution in Sliding Systems: No Passage for Air, Water, or Sound





WOODEN WINDOW SYSTEMS

- EPDM solutions offering aesthetic appeal with color options.
- High UV resistance, resistance to thermal changes, flexibility at high temperatures.
- Exceptional sealing, durability, and long-life cycle.
- Excellent performance for many years.
- Easy installation and trace-free solutions with a powdering technique.
- EPDM solutions with ropes that prevent tension.





ALU-WOOD WINDOW SYSTEMS

- Suitable for climate conditions from -50 to +140, with functional insulation for many years, high level sealing feature that can be produced under quality Mono, Sponge and Co-Ex.
- Purposeful functionality providing low thermal conductivity, effective system insulation, and sound absorption.
- Excellent acoustic and thermal insulation.
- Maximum performance with water, sound, and wind.
- Co-design solutions tailored to specific needs.





BALCONY & PERGOLA SYSTEMS

- EPDM solutions providing resistance to abrasion (able to perform tests according to ISO 4649 standard).
- Exceptional sealing, durability, and long life cycle.
- Suitable for systems that adapt to profile channels and do not detach after assembly.
Solutions unaffected by climatic conditions.
- Excellent performance for many years.
- All products produced for your systems comply with RAL, CSTB, GOST, and TSE standards.





ROOFING SYSTEMS

- High UV resistance, resistance to thermal changes, and flexibility at high temperatures.
- Suitable for -50 to +140 climate conditions, can be produced as Co-Ex and Tri-Ex with functional insulation for many years.
- High-level sealing feature.
- Suitable for systems with different color options, emphasizing functionality and high performance.
- Solutions that meet DIN standards.
- Hygienic conditions on window sills with all kinds of antibacterial, antimicrobial, and antifungal solutions.





USA / NEWARK

BULGARIA / SOFIA





KAZAKHSTAN / ALMATI



AZERBAIJAN / BAKU

TÜRKIYE / İZMİR



PARTNERS



> WHITE GOODS



> CONSTRUCTION



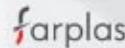
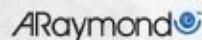
> INFRASTRUCTURE



> INDUSTRY & ENERGY



> AUTOMOTIVE



Haier Europe



Hisense

gorenje

SILVERLINE

simfer

VESTEL

DOVISTA®
windows and doors

ETEM

KOMPEN



PLASTIMET
OKNA DRZWI

ULUSAN®
Advanced Window Technology

DRUTEX
ENGINEERED FOR YOU



KLEIDCO®



VELUX®

HABA-BETON
MONOLITHIC IDEAS WWW.HABA-BETON.PL



MC
fpmccann



SUBOR

URVOY

KAMBETON



PIPELIFE

SARILAR
BÜLTÜL HAYRICE

UPERLIT®

VIACON
Constructing connections.
Consistently.

KIPAS
MENSUCAT

PFI



ŞA-RA



RENAULT

SCHÖN
Industrietechnik



Veritas



TEMSA



SEÇİL
KAUÇUK

FACTORY / HEAD OFFICE

Yunusođlu Mahallesi Yunusođlu Sokak No: 177/A - 177/B
Tarsus / Mersin - TÜRKİYE
Telephone : +90 (324) 616 11 40 Fax : +90 (324) 616 04 04
Web : www.seciltr.com E-Mail : sales@seciltr.com

SEÇİL POLSKA

Secil Polska Sp. Z.O.O., Ul. Stanisławie 17 83-112
Telephone : (58) 682 15 41 Fax: (58) 692 15 41
E-Mail : east.europe@seciltr.com

SEÇİL BELGIUM

Regus Brussels Airport Pegasus Park
De Kleetlaan 5 BC B-1831 Diegem
Belgium Telephone : +32 2 880 6241
E-Mail : west.europe@seciltr.com

SEÇİL UNITED KINGDOM

HQ - London, HQ Bloomsbury, 44a Bloomsbury
Square, London WC1A 2RP, UK
Telephone : +44 (0) 7469 508 244
E-Mail : west.europe@seciltr.com

ISTANBUL OFFICE

Barbaros Mh. Sarkaç Sk. No1. Ađaođlu MyPrestige
Plaza Kat.2 D.4-5 Ataşehir / İstanbul - TÜRKİYE
Telephone : +90 216 340 81 55 (pbx)
Fax : +90 216 340 80 73
E-Mail : marmara@seciltr.com

SEÇİL SWEDEN

Secil Rubber Malmstengatan 34 33141 Varnamo
Telephone : +46 730874251
E-Mail : east.europe@seciltr.com

SEÇİL GERMANY

Secil Kautschuk Deutschland GmbH,
Limburger Str. 42a, 65232 Taunusstein
Deutschland
Telephone : +49 6126 958 7050
Fax : +49 6126 958 7059
E-Mail : mid.europe@seciltr.com

SEÇİL ITALY

Via Bruno Lanzarini 11/C Bologna
Telephone : +39 3273259395
E-Mail : secilitalysrl@pec.it

