

**Gewässer-  
Umwelt-  
Schutz**  
GmbH



## **GUS***Foot* Installation systems

**GUS***Foot* Base and Plus System

**GUS***Foot* Special solutions

**GUS***Foot* Light

**Made in Germany**

## GUS *Foot*-Installation systems **Made in Germany**

Since 2005, GUS Gewässer-Umwelt-Schutz GmbH has been offering you comprehensive solutions with safety containment systems in the refrigeration and air-conditioning technology segment to fulfil legal requirements.

If required, our qualified sales representatives can be found travelling for you in Germany, Belgium, the Netherlands, Luxembourg, the Czech Republic, Denmark, Poland, Austria, Switzerland and other European countries.

The following pages give you an overview of our **GUS *Foot***-installation systems.

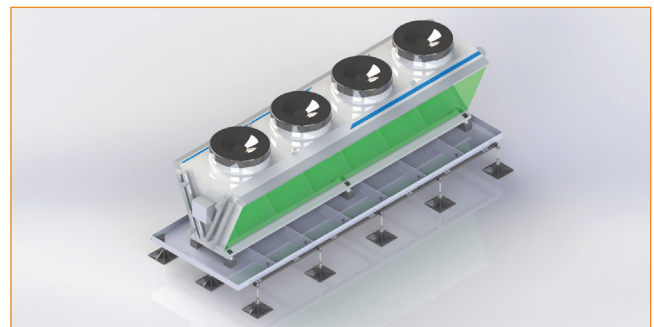
Do you have an idea yourself and questions about feasibility?

Challenge us, we look forward to hearing from you. We would be happy to discuss the best possible solution in a personal meeting directly on site.

Your  -Team

### Quality at fair prices

If you don't want to compromise on quality but always have an eye on costs, GUS is the right place for you. At our site in Nordhorn, qualified skilled workers manufacture suitable systems for customised applications. Continuous further development, also in the area of accessories, as well as reflection on the work results in the team guarantee precision work down to the last detail and an optimum price-performance ratio.



## Contents

2	<b>GUS <i>Foot</i></b> Installation systems – Made in Germany
5	<b>GUS <i>Foot</i></b> -Installation systems Base und Plus
6	<b>GUS <i>Foot</i></b> Side view
7	<b>GUS <i>Foot</i></b> Special solution
8	<b>GUS <i>Foot</i></b> <i>Light</i> -Installation system
10	GDS Damping socket
10	GTT 320 Track support
11	GAB 800 Set-up block
11	GDS Raising block

With the **GUS *Foot***-installation systems, fast, versatile and economical solutions can be realised for the installation of TGA systems.

Our **GUS *Foot***-systems impress with their functionality and robust construction made entirely of hot-dip galvanised steel. They have been developed to simplify and speed up installation.

For small projects, we offer you our **GUS *Foot* Light**. The aluminium set-up system is particularly light and transportable and can be loaded with up to 200 kg.

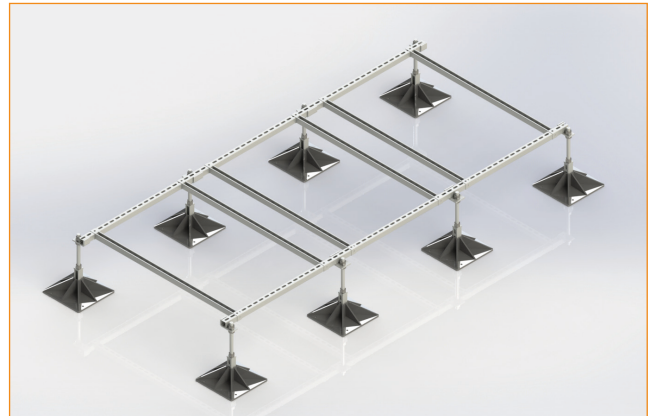
The use of **GUS *Foot***-whether basic module or customised design, offers you the opportunity to plan and implement your projects effectively and flexibly without the need for a roofer or steel fabricator.

You will automatically receive a wind load calculation with the production drawing for each enquiry.

**GUS *Foot***-Systems offer a high degree of flexibility and adaptability, allowing them to be perfectly customised to the conditions on site.

Thanks to their special feet, the installation systems can be mounted on flat roofs without damaging the roof.

In addition to products for the installation of TGA systems, the **GUS *Foot*** range also offers you installation systems for cable trays, ventilation ducts, pipework and high-quality damping bases made of SBR recycled rubber in various sizes.



### Advantages:

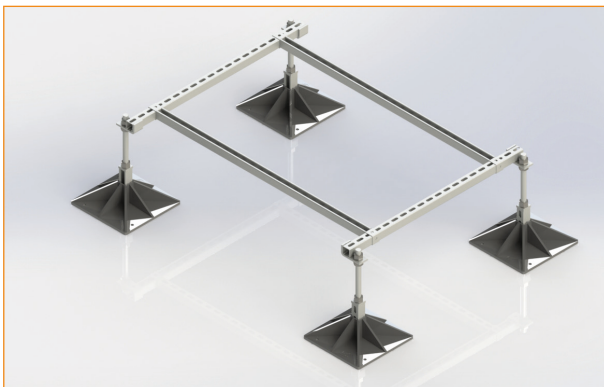
- Quick, simple and safe solution for the installation of refrigeration, air conditioning and ventilation systems
- Robust and safe
- Made entirely in Germany
- Cost- and time-efficient assembly
- Versatile modular frame construction
- Customised configuration available
- With details of the wind zones and roof height values
- Minimises damage to the roof cladding
- Enables flexible project planning

Article	Quantity of feet	Quantity of cartons	Longitudinal struts	Cross struts	Total max. length with feet	Module weight	Max. Load
<b>GUS Foot</b>			mm	mm	mm	kg	kg
Light	4	2	1.000	1.000	1.150	5	200
Base	4	2	1.000	1.200	1.645	32	800
Base + 1 Plus	6	4	2.000	1.200	1.645	54	1.200
Base + 2 Plus	8	6	3.000	1.200	1.645	78	1.600
Base + 3 Plus	10	8	4.000	1.200	1.645	101	2.000
Base + 4 Plus	12	10	5.000	1.200	1.645	124	2.400
Base + 5 Plus	14	12	6.000	1.200	1.645	148	2.800

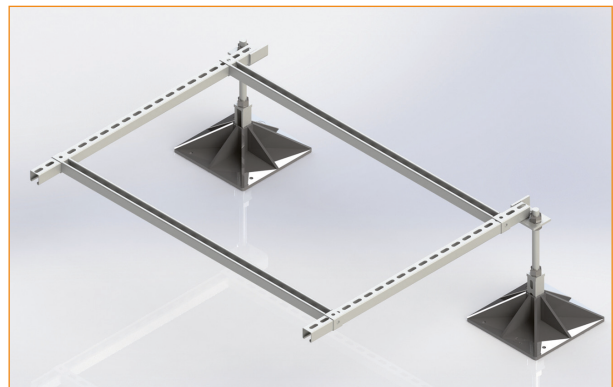
can be extended as required

Customised products available on request.

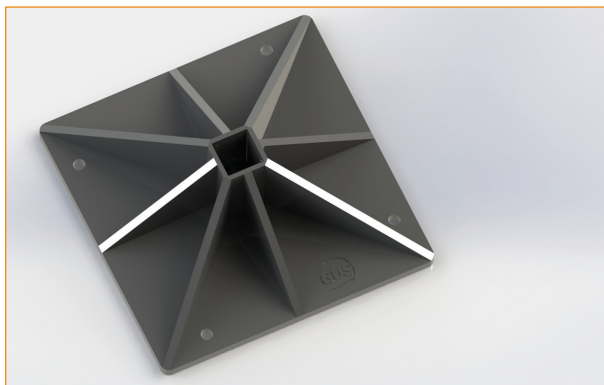
### GUS Foot Base



### GUS Foot Plus

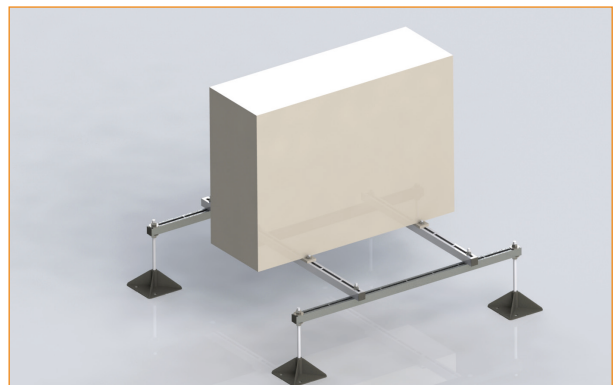


### GUS Foot-Foot

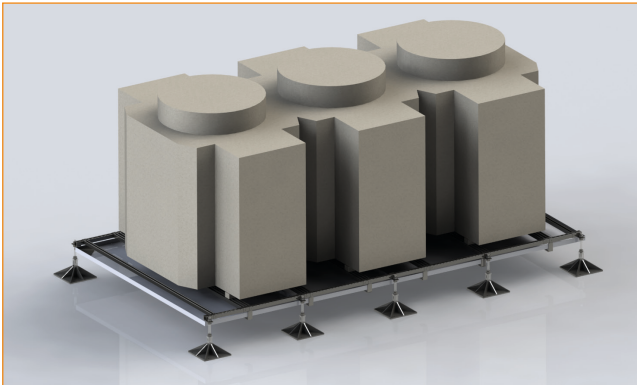


with anti-vibration mat

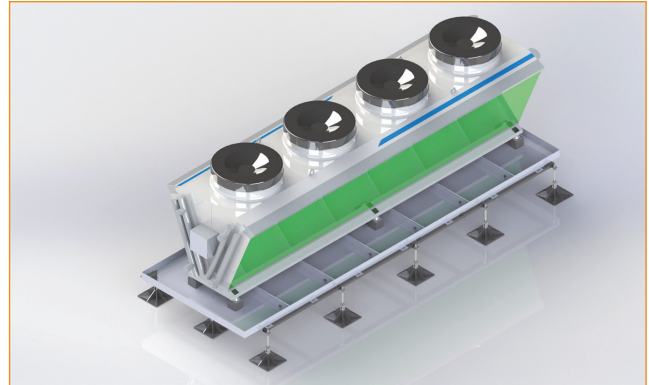
### GUS Foot Light



### GUS *Foot* Special solution



Special solution with CUW standards

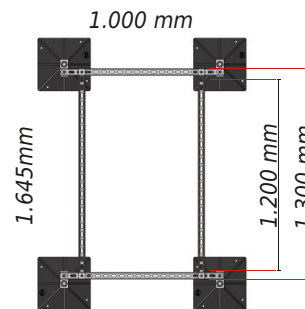


GUS *Foot* Special solution for chillers with customised design from CUW Oil protectors

## GUS *Foot*-Installation system Base

- 2 x 1 m Longitudinal struts 41 x 41 mm
- 2 x 1,2 m Cross struts 41 x 41 mm incl. screw connection
- 4 x Complete legs 320 mm incl. screw connection, Anti-vibration mat and threaded rod
- 4 x Connection bracket incl. screw connection

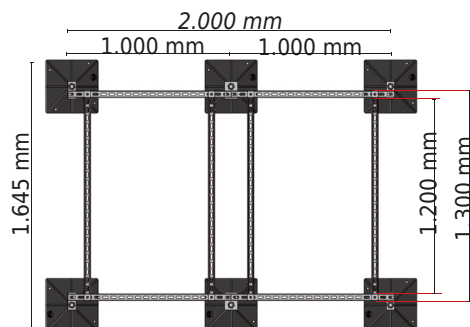
Module weight: 32 kg  
Max. Load: ca. 800 kg



## GUS *Foot*-Installation system Base + 1 Plus

- 4 x 1 m Longitudinal struts 41 x 41 mm
- 4 x 1,2 m Cross struts 41 x 41 mm incl. screw connection
- 2 Connector for the longitudinal struts
- 6 x Complete legs 320 mm incl. screw connection, Anti-vibration mat and threaded rod
- 4 x Connection bracket incl. screw connection

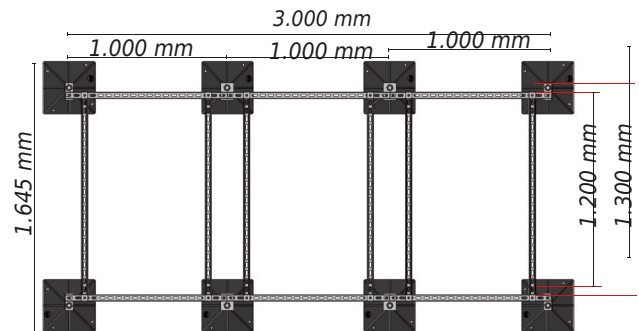
Module weight: 54 kg  
Max. Load: ca. 1.200 kg



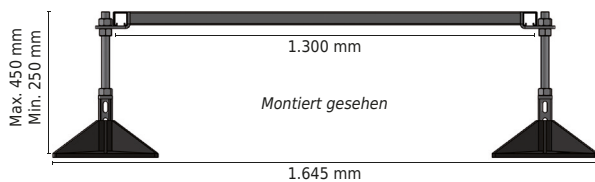
## GUS *Foot*-Installation system Base + 2 Plus

- 6 x 1 m Längsstreben 41 x 41 mm
- 6 x 1,2 m Querstreben 41 x 41 mm inkl. Verschraubung
- 4 x Verbinder für Längsstreben
- 8 x komplette Beine 320 mm inkl. Verschraubung, Dämpfungsmatte und Gewindestange
- 8 x Verbindungswinkel inkl. Verschraubung

Module weight: 78 kg  
Max. Load: ca. 1.600 kg



## GUS *Foot*-Installation system Side view



### Customised products:

We are happy to realise your projects with special dimensions. Please contact us.

**GUS *Foot*-installation system ...**  
... can be extended as desired

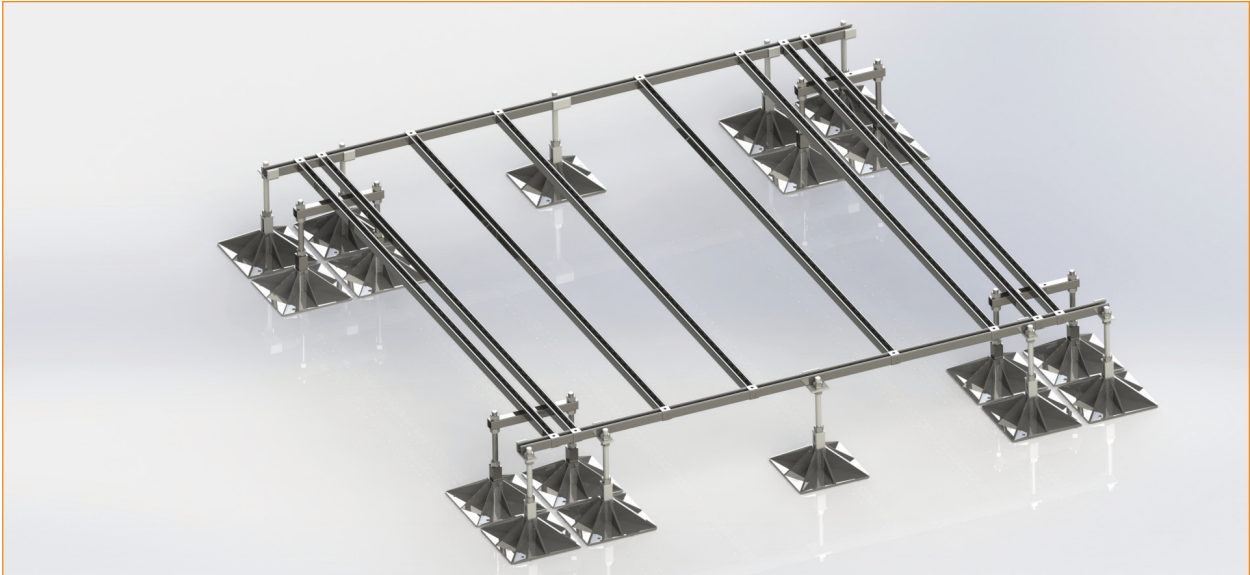
Technical data	GUS <i>Foot</i> -Installation System
<b>Material</b>	Frame: S235 JR hot-dip galvanised; Base: PP black + Anti-vibration mat
<b>Processing</b>	Welds according to DIN EN ISO 9606-1

### Note:

- **GUS *Foot*** Base and **GUS *Foot*** Plus have been designed to safely and reliably support point loads of up to 200 kg per load point.
- The base of the **GUS *Foot*** is designed for use on pressure-resistant surfaces. Non-pressure-resistant insulation can lead to permanent uneven loads and even overloads.



## GUS *Foot* Special solution



**GUS *Foot*** *Special solution for chillers*



**GUS *Foot*** *Special solution with additional support for the cross struts*

## GUS *Foot Light*-Installation system

The **GUS *Foot Light***-installation system was developed to enable the installation of TGA systems to be realised cost-effectively and professionally. Smaller systems can be installed quickly and easily.

The 5 kg lightweight aluminium set-up system with galvanised screw connections impresses with its light weight and a load capacity of up to 200 kg.

Precise centimetre scaling on all aluminium struts on the **GUS *Foot Light*** is a special aid for your assembly.



**GUS *Foot Light***



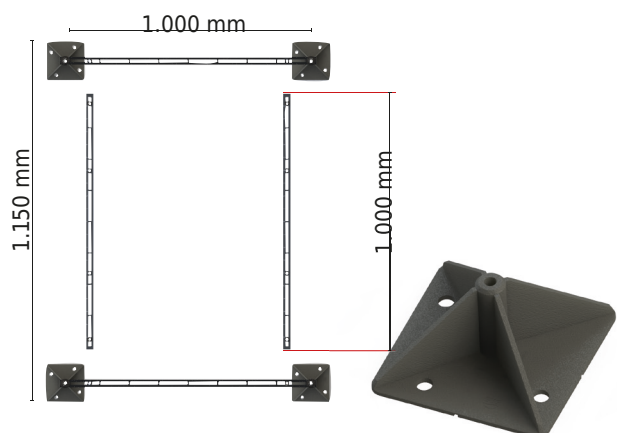
Precise scaling on all  
**GUS *Foot Light***-struts

### Benefits:

- Quick, simple and safe solution for the installation of refrigeration, air conditioning and ventilation systems
- Lightweight construction
- Easy transport
- Cost- and time-efficient assembly
- Minimises damage to the roof cladding

- 2 x 1 m Longitudinal struts 30 x 30 mm
- 2 x 1 m Cross struts 30 x 30 mm
- 4 x feet 150 x 150 mm
- 4 x Threaded rods and carriage bolt sets made of galvanised steel
- 4 x Lock screw sets for fixing the system

Module weight: 5 kg  
Max. Load: 200 kg for load points from 800 x 800 mm





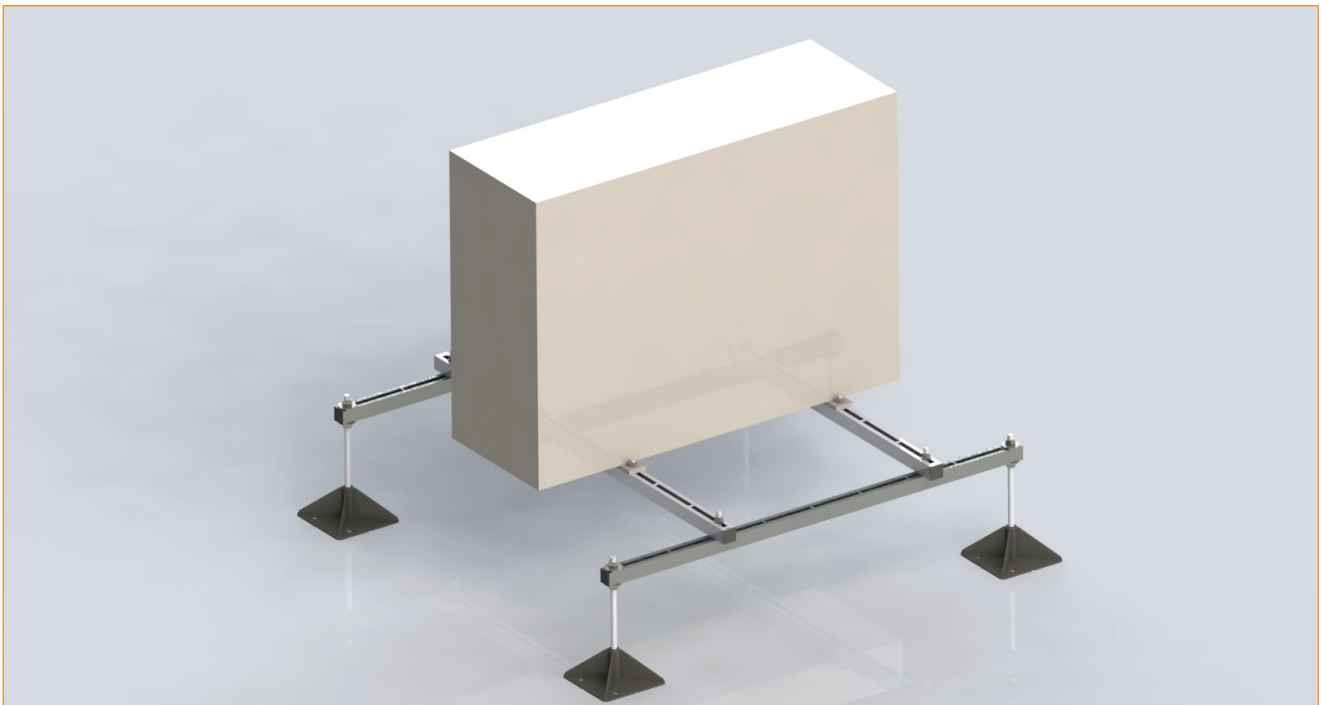
Article	Quantity of feet	Quantity of car-tons	Longitu-dinal struts	Cross struts	Total max. length with feet	Module weight	Max. Load
			mm	mm	mm	kg	kg
GUS <i>Foot</i> Light	4	2	1.000	1.000	1.150	5	200

#### Technical data

#### GUS *Foot* Light-installation system

##### Material

Frame: Aluminium  
 Screw connections: galvanised steel  
 Base: PP black with Anti-vibration mat



**GUS *Foot* Light** with sample system

## GDS Damping socket

Article	height mm	width mm	length mm	max. Load/ foot kg
GDS 240	95	190	240	160
GDS 400	95	190	400	240
GDS 600	95	190	600	450
GDS 1.000	95	190	1.000	645

### Applications:

The GDS attenuation bases from the standard series are a practical and versatile installation solution for outdoor units, pipework and ventilation ducts.

The GDS attenuation bases have a 40 x 21 mm aluminium profile strip to which devices, cables and ducts can be optionally attached using the screw set.



*GDS Damping socket*

## GTT 320 Track support

### *for pipes and cables*

#### • **Contents:**

- 2 feet 320 x 320 mm
- 2 Mounting bracket incl. screw connection
- Optimum and economical solution for fastening pipes and cables
- Quick and easy installation
- Anti-vibration mats on the feet
- The C-profile is not included in the set, suitable for commercially available C-profiles 41 x 41 mm and 40 x 38 mm



*GTT 320 Terrace support  
with installation example*

## GAB 800 Set-up block

**Installation system for the substructure of heavy appliances**

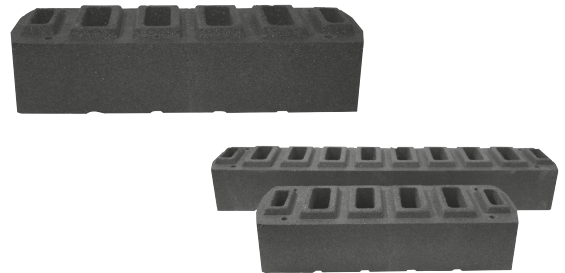
- Load capacity: 800 kg
- Flexibly adjustable
- Anti-vibration mats on the feet
- Feet in a set of 4 320 x 320 mm
- Quick and easy assembly



*Set-up block GAB 800*

## GDS Raising block

The raising block for the GDS 600 and GDS 1000 is a practical and versatile raising solution to raise the height of attenuator bases for outdoor units, pipework and ventilation ducts by 125 mm. Together, the extension block and the attenuation base result in an overall height of 220 mm.



*Raising block for GDS 600 and GDS 1000*

**GUS Gewässer-Umwelt-Schutz GmbH**

Bentheimer Straße 300  
48531 Nordhorn

+49 5921 71347-0

info@oelprotektor.de

**oelprotektor.de**



Status: August 2024

Subject to change without notice. We accept no liability for errors and misprints. Changes to these documents are not permitted.