

# GETTING STARTED

WITH **LasX**



## CONSULT

We listen to understand your unique project needs and challenges. An NDA is often encouraged.



## DEVELOP

We test materials, validate performance capabilities, and qualify manufacturing requirements to ensure we deliver quality.



## ENGINEER-TO-ORDER

We design laser systems customized to the specific automation and processing requirements of each laser marking application.



## INNOVATE

Our material motion platform offerings include: narrow web, wide web, linear conveyor, magnetic shuttle track, and rotary conveyor.

### USA HEADQUARTERS

LasX Industries, Inc.  
4444 Centerville Rd.  
St. Paul, MN 55127



### EUROPE HEADQUARTERS

LasX Europe - GmbH  
Salzstrasse 2  
D-09113 Chemnitz, Germany

sales@lasx.com | www.lasx.com | Connect with us!  



## LASERTECH

### LASERSHARP® MARKING

With our unique control technology, LasX marks high-resolution text & graphics directly on direct-to-consumer packaging at much faster rates than conventional methods.



# LASERSHARP® MARKING

LasX offers a variety of LaserSharp® Processing Modules (LPMs) for high-speed, high-resolution laser marking, on a wide range of substrates and surfaces, for applications ranging in complexity from data codes to large area image marking.

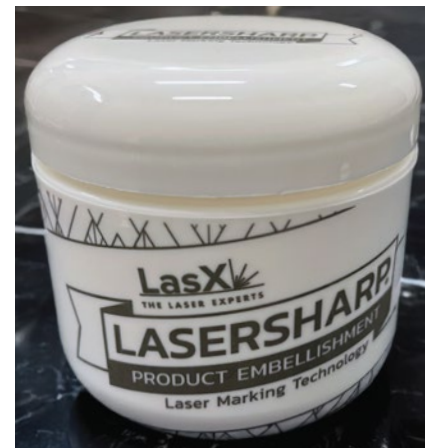
## 10X

### FASTER

than current  
laser marking  
technology

## 0.5x0.5m

### LARGE AREAS



## BENEFITS



### WASTE REDUCTION

Our laser-enabled digital workflow supports mono-materials—eliminating the wastefulness of inks, adhesives, and other materials needed for traditional methods.



### AGILE SUPPLY CHAIN

Traditional methods are operationally complex with multiple disjointed steps. Laser marking reduces complexity and waste—enabling operational efficiency and a more cost-effective approach.



### LARGE AREA COVERAGE

Laser technology facilitates full package coverage. With LasX, you can reach surface areas that pressure-sensitive adhesives, shrink, or direct ink printing can't.



### VARIABLE DATA

Our laser processing technology is digitally reconfigurable, making the process of serialization, date/time codes (“best before”, “sell by”, etc), or language variation easy to achieve.