

Discover

WORLD OF WOODTECH



 **WINTERSTEIGER**
Thinking about tomorrow.

The pooled timber expertise of WINTERSTEIGER.



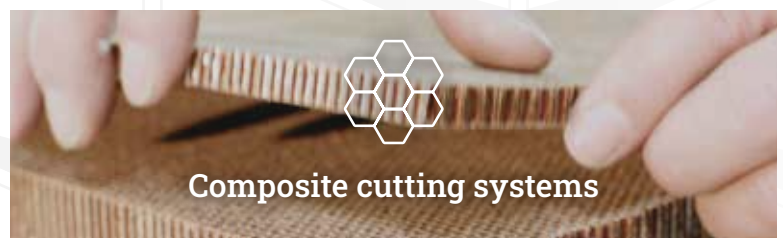
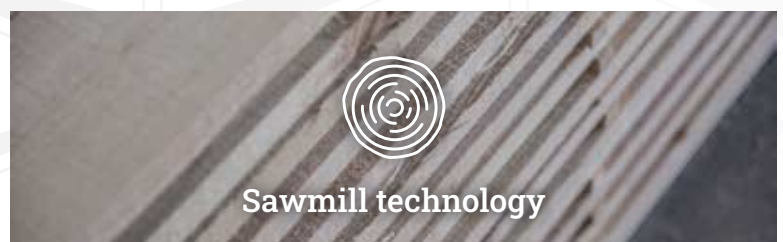
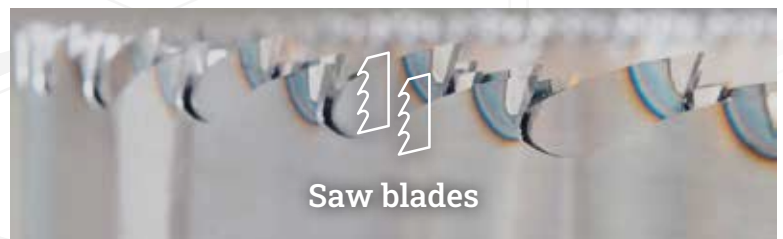
Division WOODTECH

The company started out in 1970 with the development of the thin-cutting frame saw and has since become the world market leader in precision thin-cutting of wood. We have gradually expanded our portfolio along the value chain of our customers.

Today we offer solutions spanning the entire timber industry – from the saw blade through fully automated woodworking machines to optimizing your production area with customer-specific automation solutions.

The World of WOODTECH combines five WINTERSTEIGER companies, each of which is a top player in its own right:

- **WINTERSTEIGER Sägen GmbH** in Arnstadt, Germany, one of the largest and most modern saw blade manufacturers in Europe
- **SERRA Maschinenbau GmbH** in Rimsting, Chiemsee, leading manufacturer of broadband sawmills in Germany
- **WINTERSTEIGER AG** in Ried, Austria, global market leader in thin-cutting saw machines for engineered flooring, furniture, multi-layer boards, and timber surface repair and cosmetics (TRC)
- **Heermann Maschinenbau GmbH** in Frickenhausen, Germany, is an internationally active company which has specialized in band saw technology and customized cutting systems
- **VAP-WINTERSTEIGER GmbH** in Mettmach, Austria, the automation specialist in engineered flooring, furniture, and multi-layer boards, as well as industrial sawmill technology





Saw blades & saw blade service

WINTERSTEIGER develops, manufactures, and distributes saw blades that have been hardened and tipped with carbide and Stellite® for wood, food and metal. WINTERSTEIGER saw blades are optimized for specific applications and the material to be cut. This provides our customers with optimum cost-effective results of extremely high quality.

Saw blade service

At the WINTERSTEIGER Sägen GmbH production site in Arnstadt, Germany, we offer band saw blade servicing using high-quality CNC wet grinding machines and both automated and manual straightening centers.

Our qualified staff monitor each individual step of the process. This allows us to ensure that the band saw blades are prepared to the highest level of quality.

Product range:

- **Thin-cutting band & frame saw blades**
- **Joiner saws** for all types of cutting in the narrow range; blade widths of 6 to 50 mm
- **Narrow band saws** for use in the sawmill; blade widths of 27 to 55 mm
- **Log band saws & band resaws** for use in the sawmill; blade widths of 50 to 260 mm
- **Food saws** for use in the food industry, such as cutting fresh meat with bones, frozen meat, fish, and vegetables; blade widths of 16 to 25 mm
- **Metal saws** for a variety of applications that involve cutting metals (tubes, profiles, shafts); blade widths of 6 to 41 mm





Sawmill technology

With the acquisition of SERRA Maschinenbau GmbH in January 2019, the Division WOODTECH is pleased to add mobile and stationary sawmills to the WINTERSTEIGER product portfolio.



Core competence: Log band sawmills

Horizontal log band sawmills are the core competence of SERRA. Four different size classes are available, allowing logs up to 160 cm in diameter to be sawn on mobile or stationary sawmills.

The mobile sawmills from SERRA are also available in different size and weight classes. The mobile solution is mostly used for on-site custom cutting that avoids long transport distances of the raw timber material.



Complete systems

SERRA also offers the peripherals for sawmills along with planning and design services for entire plants. This includes log and lumber conveyors, various removal systems, buffer tables, board separators, etc. SERRA also develops and manufactures resaws based on circular and band saws. These supplement the log band saw and increase the performance significantly.

Product range:

- Powerful sawmills – mobile and stationary
- Resaws and trimmers
- All peripheral devices for sawmills, plus planning and design of entire plants
- Forest machinery and equipment



CS 600 circular resaw



Project planning with XE 160



Engineered flooring, furniture, boards

WINTERSTEIGER is known for advanced thin-cutting technology that is used worldwide in the production of lamellas.

The product range includes thin-cutting frame saws and thin-cutting band saws, including upstream and downstream processing. The thin kerf, highest accuracy, a ready-to-glue surface, and processing the lamellas without additional steps are key benefits for users.

WINTERSTEIGER thin-cutting solutions for wood are used in the production of lamellas starting from 1 mm thickness. Manufacturers of engineered flooring, doors and windows, multi-layer boards, pencils and dowels, musical instruments, etc. count among its many customers.



Timber Repair & Cosmetics

Thanks to its „Timber Repair & Cosmetics“ (TRC) systems, which detect and fill in defects in wood like knots and cracks semi-automatically or fully automatically and enable individual surface finishing of rustic planks and panels, WINTERSTEIGER has become the world's leading one-stop supplier.

WINTERSTEIGER also offers customized process solutions from a single machine to a complete system as well as customer-oriented engineering to expand, modernize, or optimize existing systems..



Product range:

- Thin-cutting saw machines
- Thin-cutting saw blades
- Saw blade reconditioning
- TRC timber surface repair and cosmetics
- Top layer measurement



TRC Board 2TH

Thin-cutting band saws



DSB Twinhead Pro XM

High performance and maximum flexibility when cutting wooden blocks into high-quality lamellas and sawn veneers. Up to 45 m/min. The self-regulating saw band tracking system for optimum band tension in combination with the carbon pressure guidance system and the rigid block guide, ensures maximum precision with minimum cutting kerfs starting at 1.0 mm!

Thin-cutting frame saws



DSG Notum

Saw blade reconditioning



Micro Grinder NC

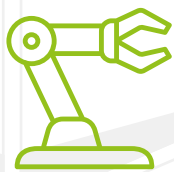


Cutting saws for lightweight and technical materials.

Heermann Maschinenbau GmbH in Frickenhausen (D) is an internationally active company which has specialized in band saw technology and customized cutting systems.

HEMA develops, produces, and sells band saws around the world for almost all materials and applications. Their portfolio also specializes in solutions for cutting lightweight materials and insulating materials.





Automation & plants

Decades of know-how in cutting high-quality lamellas and sawn veneers have helped WINTERSTEIGER to mature into a specialist in upstream and downstream processes.

Here too WINTERSTEIGER's carefully conceived solutions follow the successful approach of „everything from a single source“. If customer-specific production systems are needed, then the automation expertise of VAP-WINTERSTEIGER GmbH is at hand. VAP provides automatic thin-cutting band saw systems and special systems for multi-layer products, as well as automatic timber repair systems for restoring timber surfaces with the TRC (Timber Repair & Cosmetics) product line.



Customer-specific engineering

As a one-stop supplier and general contractor, we provide complete business solutions as well as machines and systems for individual fields.

Automation solutions for:

- Engineered flooring, furniture, and boards
- TRC timber surface repair and cosmetics
- Timber drying
- And much more



TRC Panel 2TH



