

SYSCAD® is an application, designed for CAD-compatible engineering and consistent designs of sectional drawings and joint details in metal working. It is based on AutoCAD® or BricsCAD®. Both are proved and well-known. SYSCAD® has been used by customers since 1989.

Systems of following manufacturers are currently supported:

AKOTHERM, ALIPLAST, ALUPROF, BATIMET, BE-Bauelemente, FEBA/Inoutic, FERRO-WIC, FOPPE, FORSTER, GUTMANN, HAWA, HEROAL, HUECK, JANSEN, KAWNEER / ALCOA, MJB, METRA, OTTOSTUMM, POHL, PROFINE, RAICO, RECORD, REHAU, REYNAERS, RP-Technik, SAPA, SCHÜCO, SCHÜCO-KUNSTSTOFF, SECCO SISTEMI, PANORAMAH, PROFINE, FELDMANN, STABALUX, SYKON, TECHNAL, TKI, VEKA, voestalpine, W-HARTMANN, WICONA

Using universal steel/ alum. systems, you can create sectional and plan views of handrails, i-beams, and frame structures for facades to be mounted on.

Custom profile systems are available, as well.

Hardware and Software requirements for SYSCAD® are similar to the ones for AutoCAD® / BricsCAD®. SYSCAD® is available for AutoCAD® from version 2007 or BricsCAD® V17.

Price list

SYSCAD® is offered on a monthly fee basis

- the first licence purchase - 120 euro monthly
- the second licence purchase - 90 euro monthly
- each further purchase - 60 euro monthly

All prices are without VAT.

Prices for master data of other manufacturers are available upon request

For more information, do not hesitate to contact us.

We will demonstrate SYSCAD® close to your location and make a non-binding offer for you.



Distribution and Development:

SYSCAD TEAM GmbH

Ziegelhütte 18
DE - 91236 Alfeld

Phone: ++ 49 (0) 9157 997 9994

FAX: ++ 49 (0) 9157 997 9004

e-Mail: syscad@syscad.info

Internet: www.syscad.info

The package includes:

- master data for W-HARTMANN / steel /alu /wood
- support per phone, fax, and e-mail
- SYSCAD® updates, free of charge
- master data updates, free of charge
- No minimum running time. Cancellation with six weeks' notice to the end of the quarter.

Your SYSCAD dealer:

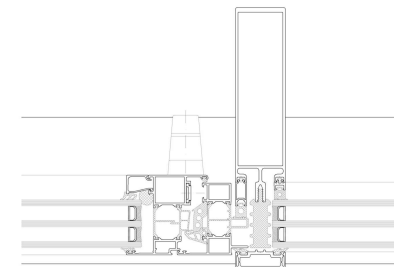
SYSCAD® is a registered trademark of SYSCAD TEAM GmbH
AutoCAD® is a registered trademark of AutoDESK
BricsCAD® is a registered trademark of Menhir NV
Excel® is a registered trademark of Microsoft Corporation



CAD - Application for Metal Engineering



**system-independent solution
for designing and job
preparation in CAD**

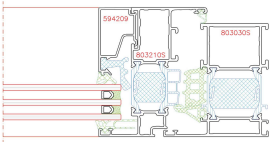


Using SYSCAD, you create a perfect sectional view

SYSCAD is a perfect CAD application, if you need CAD-compatible and consistent designs of sectional views and joint details in metal working. Requirements for detail consistency become higher and higher in the planning. That can only be managed by efficient tools saving time and money. Since 1989, SYSCAD has been the tool for metalworkers and designers who are profile system orientated.

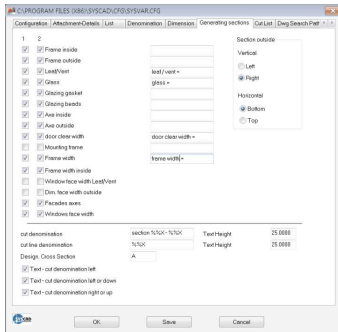
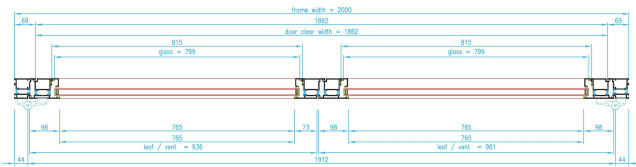
Using SYSCAD, you create a good section, since:

- profile system libraries are reworked **uniformly**. All system components, e.g. profiles, gaskets, or accessories are placed on material-related layers. Contours consist of closed poly-lines, as required by CAD, making further processing and printouts easier.



- all components are stored as a block
- suggestive insert points
- material-related layers (aluminium, steel, gaskets, etc.)
- closed poly-lines
- hatches on separate layers

- SYSCAD dimensions your sections by associative dimensions **as required by CAD** if you draw in natural scale, or with varying sizes if you create interrupted sections. You can change the dimensions by using common CAD dimensioning styles and SYSCAD configuration settings.



- SYSCAD can be adapted to your **individual** drawing styles and customs. So you can maintain your drawing standards with SYSCAD.

- SYSCAD is **easy** and uncomplicated in its use. If you are skilled in AutoCAD, you can immediately begin with SYSCAD and effectively draw with all functions of profiles library and options for Membranes, Insulation, or Metal Sheet. The application is based on AutoCAD logics and, therefore, easily to understand and to operate. Should you need help, our intelligent Online Help will provide assistance for the current programm or subject.

- SYSCAD does **not depend on the supplier**. Leading supplier's data are stored and updated in our databases. If you have special wishes, do not hesitate to contact us. Our experience with profile systems helps to fulfil any demand.

Contact us - we will be glad to organize a good section for you.

SYSCAD High-lights

- **Combination and glazing of profiles**
create sections in accordance with the supplier's catalogues instead of cumbersome scrolling of purchasing catalogues.

- **Lists in Excel® according to your set values**
The list of cuts for one position is also optionally generated in the drawing.

- **Wall junction details**
Optionally as block or intelligent object for easy modifying and processing (metal sheets, membranes, insulation, panels, glass, concrete, welding seams, steel semi-finished products, etc.)

- **Extensive standard parts library**
as intelligent part for easy modifying and processing (steel and aluminium semi-finished products, screws, nuts, dowels, anchor bolts, etc.)

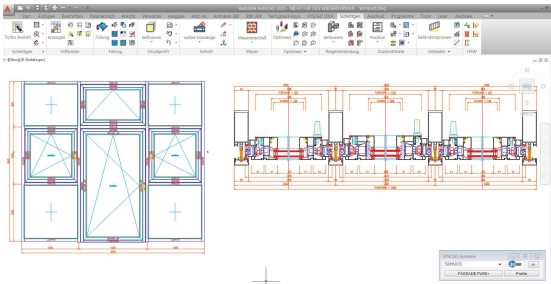
- **Intersection point calculation**
allows an initial overview of your design costs, as well as comparison of the required parts and outlay with other systems.

- **“Reference dimension” and „indication of altitude” features**
You can dimension your views and sections.

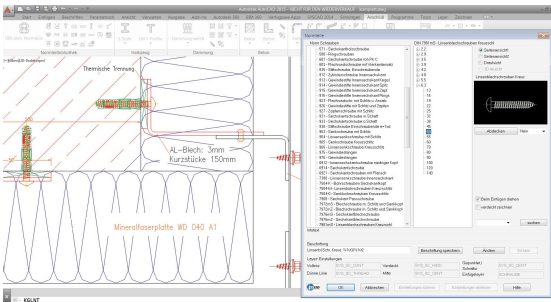
- **Special profiles**
Use your special profiles when generating sections and making lists of cuts.

- **Your database of wall junction details**
Store your wall junction details in a database and use them for sections and for calculation.

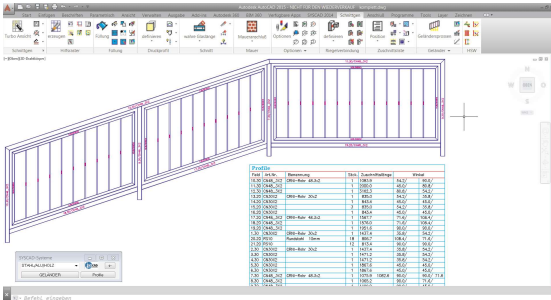
- **... and many other useful features**
for metal engineers, designers and architects



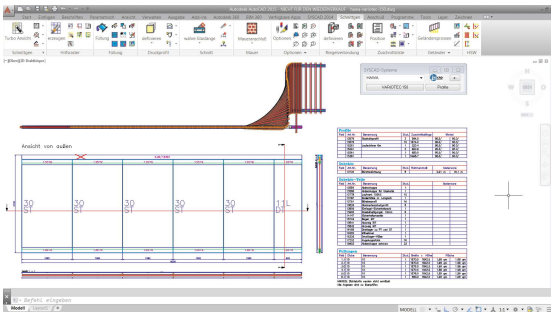
Elevation and sectional views of SCHÜCO FW 50+ with windows /door



Wall junction with a sophisticated standard components library



Elevation and parts list of a handrail with the univers. steel system



Elevation, sections and parts list of a horizontal sliding wall. The vent simulation shows possible collisions.