



Just fiipe it.



Water power plant | 65 bar gaseous | 200 m of pipes | 100 fittings

Our story.

Our enduring passion for engineering kept us striving for the simplest solution available in order to connect two pipes. This passion has finally resulted in the creation of the FIPE system, which sets new standards when it comes to efficiency, safety and mobility for installing pipes.

Specialising in the development, production and distribution of our high-pressure pipe fitting system, FIPE products meet the toughest demands of various industries and thus affirm the reliability of this technology daily.

FIPE stands for innovation in pipe installation - or simply: connecting pipes.

Still welding? Just fiipe it.



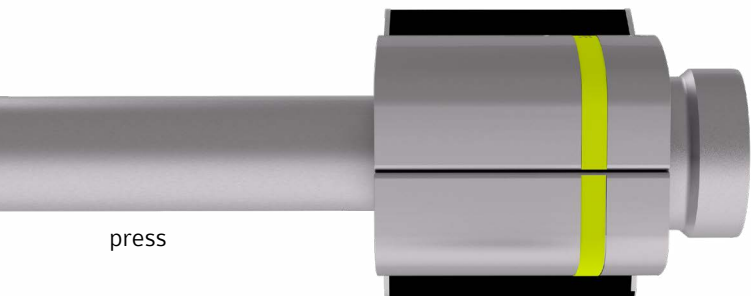
FIPE
connecting pipes



prepare



insert



press



check

It is that simple.

There are only four steps to follow in processing a successful FIPE connection. Prepare the pipe and insert the fitting. Attach the press tool and swage the connection via remote control. Finally, simply check the quality of the connection visually. It's that easy!



Fipeing - this is why.



Efficient



With the FIPE system, it takes less time to connect two pipes than with any other pipe connection technology. Time-consuming preparatory work or post inspections become unnecessary. Therefore, each single pipe connection results in a significant cost reduction of your installation project.



Safe



Our system is plug-and-play. After linking the pipes, they will be pressed via remote control – no hot works, no wrench-acrobatics are needed. Thanks to the innovative FIPE technology, a consistent leak-proof quality of each pipe connection is guaranteed.

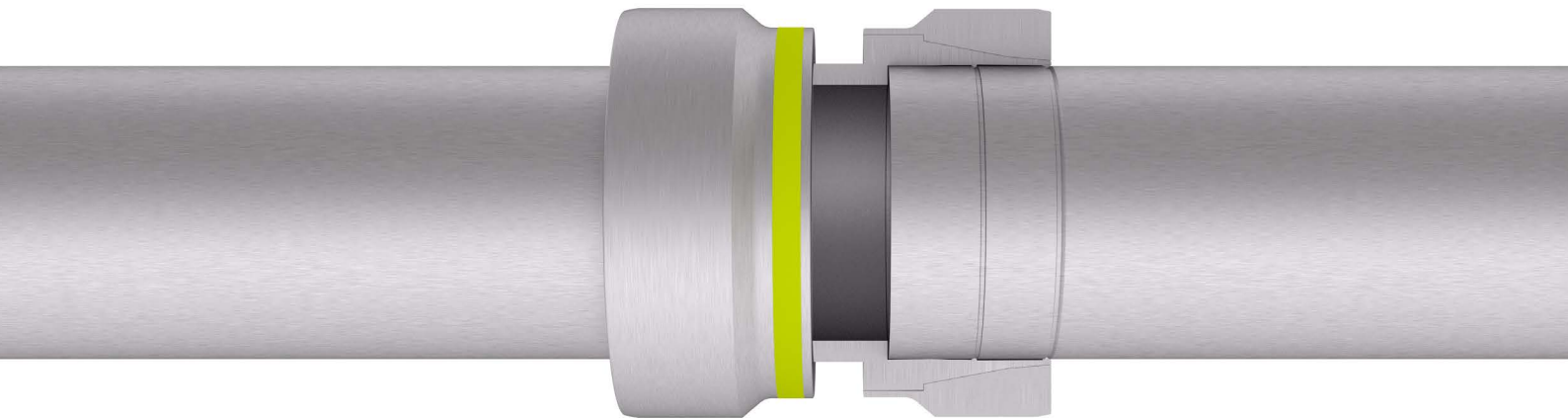
Mobile




The installation equipment consists of handy press tools and a compact battery driven hydraulic pump. This is all you need to install high-pressure pipes. The whole installation equipment is stowed in portable bags and can be carried easily wherever you go.

Smart and proven.

The FIPE fittings come in a one-piece design with a pure metallic seal. The fitting bodies, which get in contact with the media, always consist of the same material as the pipe – and nothing else. Our press tool applies an axial force to the fitting and crimps two metallic seals into the pipe surface. This makes FIPE fittings safe and durable.



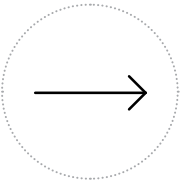
Applicable for media	Liquids and gases
Working pressure	140 bar
Max. test pressure	250 bar
Pipe dimensions	12.0 – 88.9 mm 1/4" – 3"
Pipe material	Stainless steel or carbon steel
Pipe processing	Welded or seamless pipes
Pipe standards stainless steel	EN 10217-7 EN 10216-5 ASTM A312
Pipe standards carbon steel	EN ISO 10217-1 /-2 /-5 EN ISO 10216-1 /-2 EN ISO 10305-1 to 4 EN 235
Pipe tolerances	EN ISO 1127 D3/T3 EN 10220 ASTM A269



“We planned on welding but
couldn’t ignore the obvious benefits
of fiiping anymore.”

Cable tunnel | 140 bar liquid | 37 km of pipes | 6,000 fittings

Any flow function is possible.



Straight



Straight slider



Straight reducer



Straight male
connector



Straight female
connector



Straight male
thread



Straight female
thread



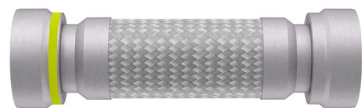
Straight flange
SAE



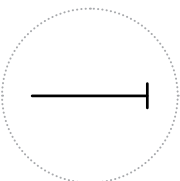
Straight flange
DIN EN



Straight detach male
thread



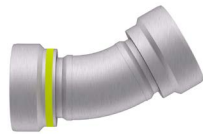
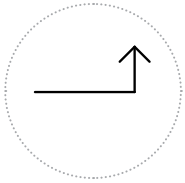
Flexible hose



Blind cap



Pressure test plug



Elbow 30



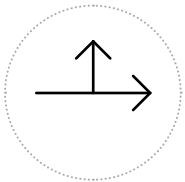
Elbow 45



Elbow 90



Blind 1-fold female connector



Tee



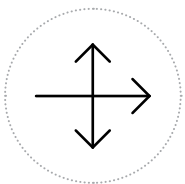
Tee reducer



Distributor 1-fold male connector



Distributor 1-fold female thread



Cross equal



Cross reducer



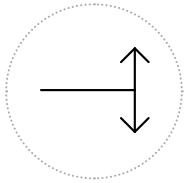
Distributor 2-fold male connector



Distributor 2-fold female thread



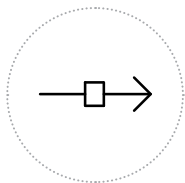
Distributor 4-fold female thread



Blind reducer



Blind 2-fold
male connector



Check valve



Ball valve

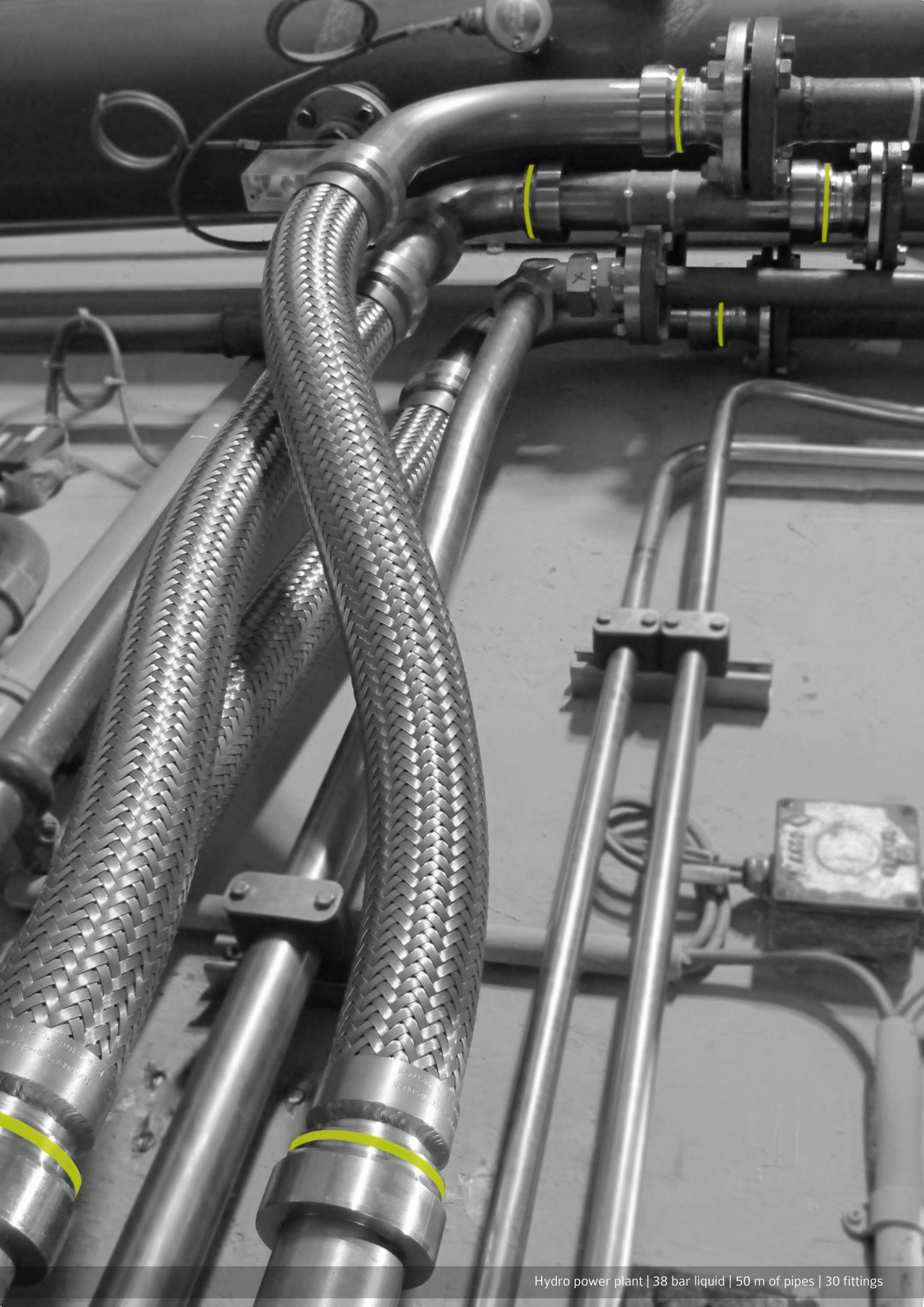


Ball valve
male connector



Control unit

Our fitting portfolio is continuously growing. Thanks to the modular system design, FIPE is able to develop and produce new fitting types on demand and at your earliest convenience.



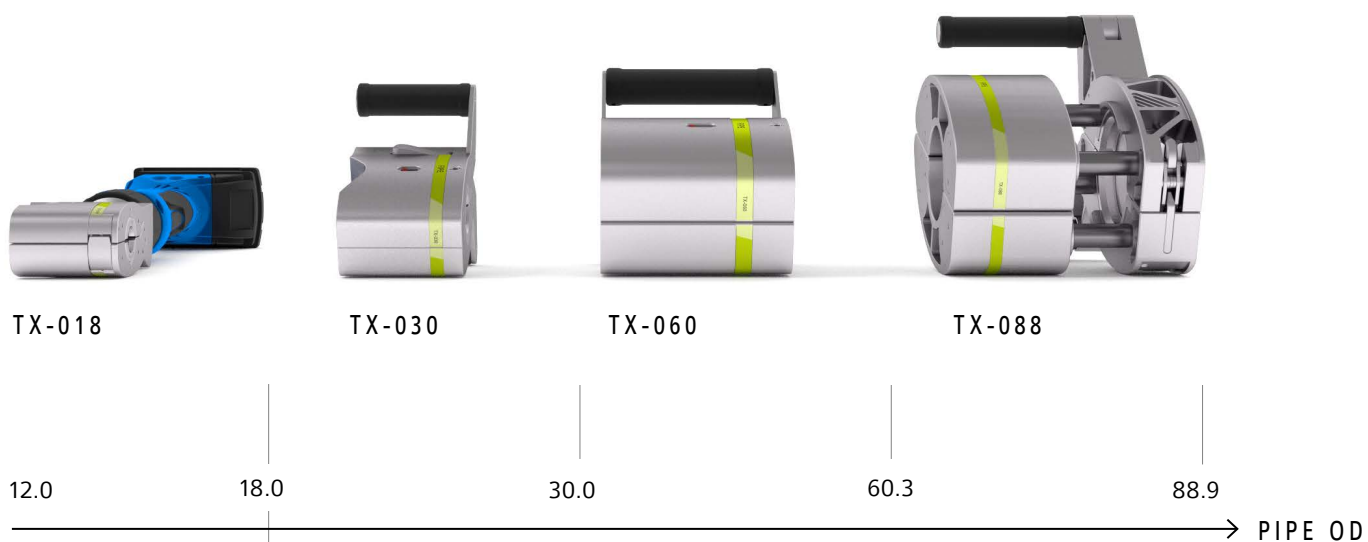
Hydro power plant | 38 bar liquid | 50 m of pipes | 30 fittings



Just two bags. Highly mobile.

Your gear.

Based upon the pipe dimension,
choose the appropriate press tool
and the corresponding inserts.



TX-018. The handy one.

The TX-018 comes with a built-in hydraulic pump that is battery driven. Due to its compact measurements, our smallest tool is able to reach fittings even in narrow spaces.

TECHNICAL DATA

Weight: 5.0 kg

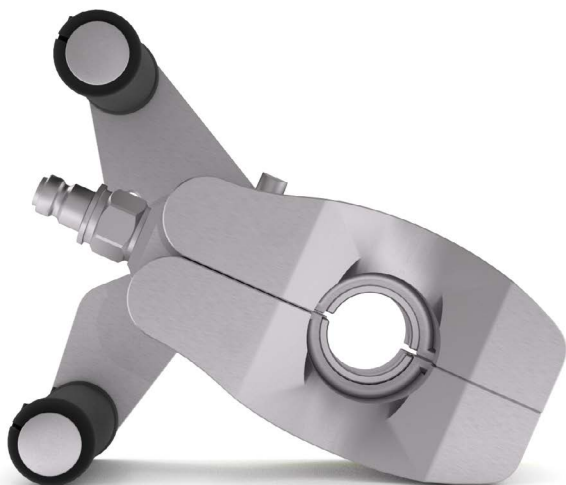
Measurements: 80 x 118 x 448 mm

Pipe dimensions: 12.0 - 18.0 mm

Number of pipeings with one
battery charge: 150 - 250



TX-030. Small and nimble.



Due to its compact measurements and the ergonomic handling, our smallest tool even reaches into narrow spaces.

TECHNICAL DATA

Weight: 5.9 kg

Measurements: 160 x 145 x 208 mm

Pipe dimensions: 20.0 - 30.0 mm

Number of pipeings with one
battery charge: 150 - 200

TX-060. A real powerpack.



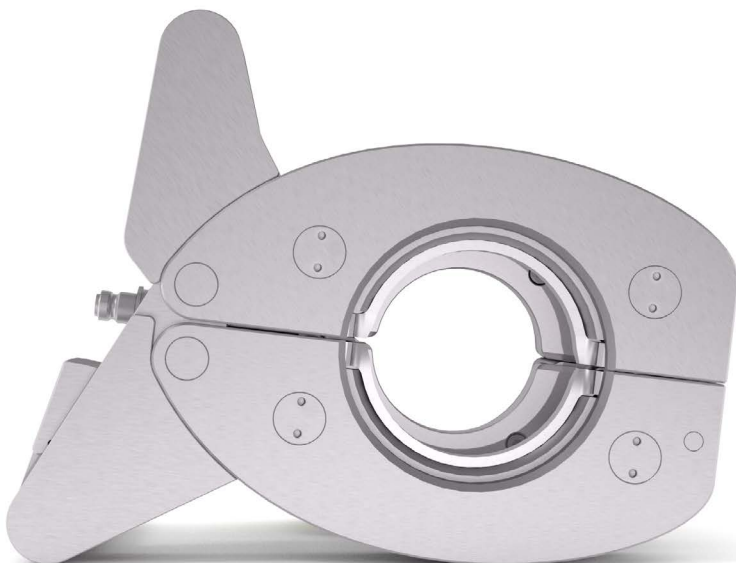
With its compact body the TX-060 even presses 60.3 mm fittings in less than a minute – and this without tiring the installer.

TECHNICAL DATA

Weight: 6.8 kg
Measurements: 170 x 145 x 220 mm
Pipe dimensions: 32.0 - 60.33 mm

Number of pipeings with one battery charge: 60 - 100

TX-088. Still mobile.



Could you imagine connecting a 3" pipe effortlessly? With the assistance of the TX-088 this procedure is a child's play.

TECHNICAL DATA

Weight: 14 kg
Measurements: 290 x 239 x 189 mm
Pipe dimensions: 63.0 - 88.9 mm

Number of pipeings with one battery charge: 40 - 60

Your reliable workmate.

The “workhorse” is the name we have given to our hydraulic pump. It operates 20,000 press cycles maintenance-free. The device operates battery driven and thus offers the installer high mobility.

TECHNICAL DATA

Weight: 4.6 kg

Measurements: 300 x 195 x 210 mm

Power supply: Battery or 230 V

Interface: Remote control

Connection: Hydraulic hose



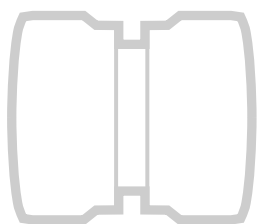
“The mobility of the FIPE equipment saves our installers a lot of time and sweat.”





Meet a Fiper close to you.

One of our customers might just be close by. What better way to talk about FIPE than with a FIPE user. See how the system works on-site.



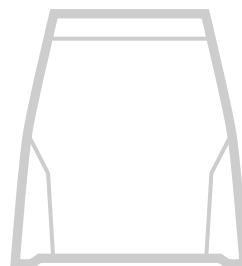
745,000

Pipe connections so far



230

Press tools in action



120

Hydraulic pumps in action



Quality made.

ENGINEERING

FIPE products are being engineered in Switzerland. Thanks to having our engineers and our production facilities close by, innovation and advancements in technology flow directly into our products.

PRODUCTION

Our production facilities are based in and around Switzerland. We produce with selected manufacturers, which not only possess a long-term reputation for a consistently high quality level but also meet the requirements of our stringent quality control system.

SUPPORT

FIPE is able to develop and produce new fitting types tailored to the customer's demand. We offer full support during the pipe layout and planning process and strive for an optimal cost value ratio for each individual pipe installation project.



FIPE
connecting pipes