

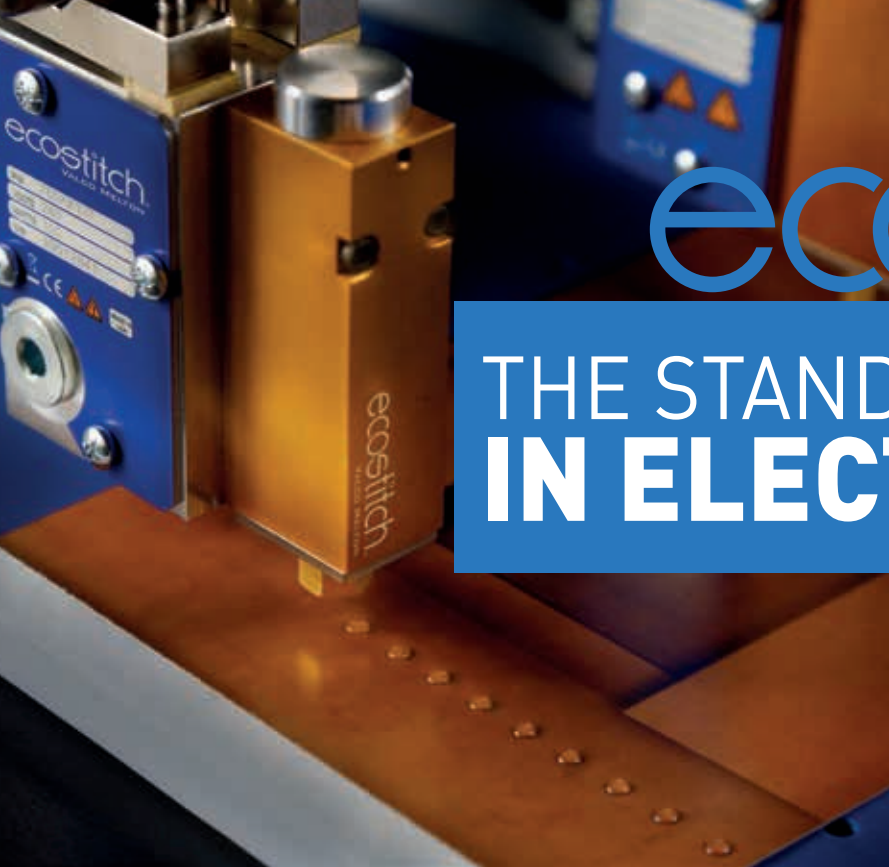


GLUING & QUALITY INSPECTION SOLUTIONS FOR THE

# **HOT MELT PACKAGING INDUSTRY**



Adhesive Dispensing & Quality Assurance Systems



# ecostitch®

## THE STANDARD IN ELECTRIC GLUING

With over 2 billion cycles of proven performance, EcoStitch has set the standard in electric gluing, delivering unmatched efficiency and reliability across global installations. Join leading global packagers already benefiting from significant adhesive savings that provide ROI in as little as 4 months.



*EcoStitch Dots Vs Bead Pattern*

## ADDED BENEFITS

1. Lifespan exceeding 2 billion cycles
2. No compressed air required for operation
3. Improve OEE and minimize TCO
4. Reduce spare part consumption

**REDUCE ADHESIVE  
USAGE 40-70%**



**LESS  
DOWNTIME**



EcoStitch electric valves and gear pumps remove almost all dynamic seals required to run a pneumatic system. This instantly improves machine uptime and reduces the chance of failure created by too many moving parts.

**NO DYNAMIC  
SEALS**



**ELECTRIC  
TECHNOLOGY**



**COMPATIBILITY**



**CONNECTIVITY**





# ECOSTITCH APPLICATOR

- Electric technology eliminates the need for plant compressed air for operation
- 2 billion cycle lifespan and burst speeds up to 15,000 cycles per minute
- No dynamic seals, minimizing the risk of failure
- Adapts to your process requirements with a wide viscosity range (up to 7,000 cps) and high-temperature capability (up to 400°F)
- Seamless integration with existing equipment through VD2 drivers



## MULTIPLE CONFIGURATIONS



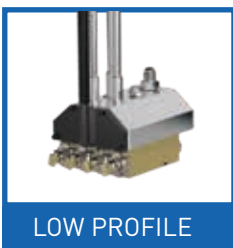
TOP FEED



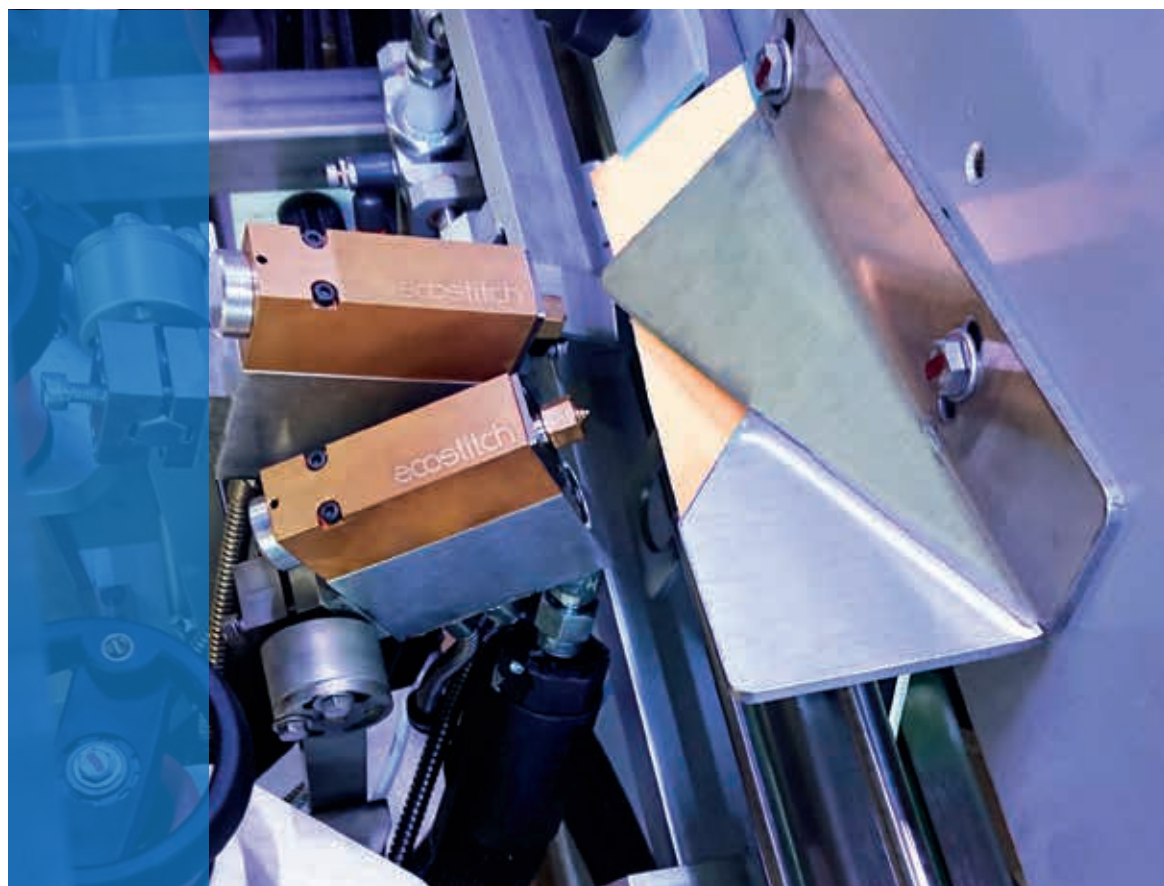
SLOPE BACK



V-WING



LOW PROFILE



# ECOSTITCH SERIES MELTERS

Intelligent, all-electric hot melt systems featuring gear-driven pumps and digital controls that seamlessly integrate with existing production lines. Multiple tank sizes (4, 10, 16L) with melt rates from 11 to 78 lbs/hr provide optimal flexibility for any manufacturing process.



## AUTO-FEED VACUUM SYSTEM

Valco Melton's Auto-Feed System automatically maintains the adhesive level of your connected hot melt unit while preventing debris from entering the system. Auto-feed systems offer operator safety and time-efficiency to your production floor by reducing loss of time and additional labor costs associated with manual refilling processes.



## ADHESIVE TRACKING

Monitor hot melt consumption in real-time without flow meters, measuring usage down to grams per product. Featuring configurable alarms, visual indicators, and PLC integration, this system optimizes adhesive application while ensuring consistent product quality.



# VALVE DRIVERS

---

VD2 drivers integrate into the existing machine and provide EcoStitch dot and gap control that regulates adhesive usage. Individually program a specific dot size and gap for each valve, offering unparalleled flexibility and maximum adhesive savings.



## VD2-E

- Capable of operating up to two electric valves
- Two inputs for independent valve activation



## VD2-P

- Ethernet/IP connectivity, for integration with the parent machine PLC
- Scalable from 2 to 12 valve outputs



## VD2

- Can be mounted externally
- Suitable for washdown and dust-exposed environments

## FEATURES

- Full electronic control over adhesive volume
- Four user-selectable operating modes
- Dot/gap, dot count, bead mode, or stitch percentage
- Dot pattern, not a series of short stitches
- Existing recipes are unchanged
- Activates valves based on input signals from the parent machine

## Enclosures

Floor and wall mount options to house drivers



# RUGGED HOT MELT HOSES

---

RUGGED hot melt hoses deliver superior durability and industry-leading longevity, with protective corrugated covers and premium internal components for demanding manufacturing environments.

- Corrugated plastic flex cover prevents water damage and eliminates zip tie wear points
- Flexible electrical cordsets with optional 90-degree plugs for challenging installations
- Quick Lock clamp system ensures secure electrical connections to melter units
- Available in both standard and washdown configurations in lengths from 2 to 32 feet



# THE RELIABLE CHOICE

## Designed for Energy Efficiency...

Operate more efficiently by reducing energy consumption and optimizing overall resource use. Benefit from greener operations without compromising performance.

- Reduced power usage in our melters and hoses
- Insulation on applicators, fittings, and connectors as a standard
- Minimized compressed air consumption in our autofeed system

## ...Built for Your Productivity

Our systems are designed to reduce manual tasks and minimize unplanned downtime, boosting productivity and consistency in demanding packaging environments.

- Melt-on-demand technology eliminates manual intervention
- Insulated components ensure thermal stability for reliable performance
- Connector safety locks prevent accidental disconnections and associated downtime

ALL  
INSULATED



IMPROVE  
SAFETY



HEAT  
STABILITY



REDUCE  
DOWNTIME



COMPATIBILITY



CONNECTIVITY



## KUBE MELTER

Energy-efficient melters that optimize the heating process with superior insulation technology, minimizing energy lost to the environment. Multiple sizes and melting capacities to adapt to any manufacturing process. Ethernet, Profinet and Modbus communication kit available as an option.



## MKF APPLICATOR

Insulated hot melt applicator for safe handling and lower energy consumption. High-speed performance of up to 8,000 cycles per minute. The MKF also supports drop-in replacements with AOAC Bead and Zero Cavity mini modules, providing flexibility and ease of maintenance. Its integrated filter system retains contaminants, helping to maintain adhesive quality over time.







## KUBE ZERO MELT ON DEMAND

Kube Zero Melt-On-Demand technology helps improve system operation by removing degradation problems, as well as minimizing the maintenance and downtime associated with traditional gluing systems. Engineered for today's most demanding production environments, KUBE ZERO combines maximum productivity, sustainability, and safety in a single compact solution.

- **Productivity:** Monoblock heating design cuts start-up times by 65% and delivers a 13 kg/hr melt rate.
- **Sustainability:** Auto-feed with FIFO (First In First Out) technology reduces waste and maintains adhesive quality.
- **Safety:** Advanced insulation keeps external surfaces below 45 °C, minimizing heat loss and ensuring operator protection.

Track adhesive consumption and adjust settings remotely for full production control. KUBE ZERO integrates with modern manufacturing environments via MODBUS, OPC UA, PROFINET, ETHERNET, and more.



## AUTO-FEED

Valco Melton's Auto-Feed System automatically maintains an optimal adhesive level in the tank while preventing contamination. This enhances operator safety and ensures uninterrupted operations, eliminating production downtime associated with manual refilling processes. A new wand design **reduces air consumption by up to 20%**

## THERMACORE HOSES

Enjoy superior thermal stability with Thermacore advanced Nomex® insulation and reinforced Teflon® core. This provides energy savings and reduces adhesive degradation for total reliability in demanding applications.



## FITTINGS & NOZZLES

Valco Melton's fittings come with insulation as standard, with optional insulation available for nozzles. This boosts safety by preventing burns and improves efficiency by reducing heat loss. The insulation also maintains uniform temperature for better bonding performance.

# PACKAGING ESSENTIALS

Not all packaging applications demand high speeds, complex bead patterns, or high precision. At Valco Melton, we cater to these needs by offering industry-proven hot melt equipment built to withstand tough conditions and deliver long-lasting performance. All while ensuring full compatibility with standard industry systems.

## NC SERIES

- Universal footprint for seamless integration into new or existing lines.
- Available in 4, 8, 16 L unit options, with up to six possible exits, and customizable settings through a user-friendly control panel.
- Noise-free pneumatic piston pump with anti-pressure drop system prevents pressure fluctuations.



## MS SERIES

- High performance pneumatic design capable of up to 2,400 cycles per minute.
- Large variety of compatible modules and nozzles to fit exact application needs.

ROBUST DESIGN



COMPATIBILITY



## MANUAL GLUING PROCESSES

For gluing processes where automation is not an option due to large box formats or low production volumes, Valco Melton offers reliable handgun alternatives for manual gluing.

### A5 SERIES HANDGUNS

A5 insulated handguns improve operator safety by preventing burns while handling. They feature a more ergonomic design with dual handles and a swivel fitting. The melter pump is activated directly from the gun for faster restarts.



HG-40  
Series

A4 Series





# PALLETIZING SOLUTIONS

Valco Melton's palletizing systems offer a reliable, eco-friendly alternative to traditional stretch wrap and thermo-shrink film. By using anti-slip hot melt adhesives, our solution secures and stabilizes pallets without the need for plastic liners, carton corners, or excess packaging materials. This not only reduces operational and packaging costs, but also minimizes plastic waste and environmental impact. Products can be re-stacked multiple times while maintaining adhesion, offering added flexibility throughout the supply chain.

1. Reduce consumables by up to 80%, lowering costs and environmental impact
2. Secure and stabilize pallets with no stretch wrap or middle liners
3. Easy installation without stopping the line
4. Work with bead or spray adhesive patterns



## SUITABLE FOR

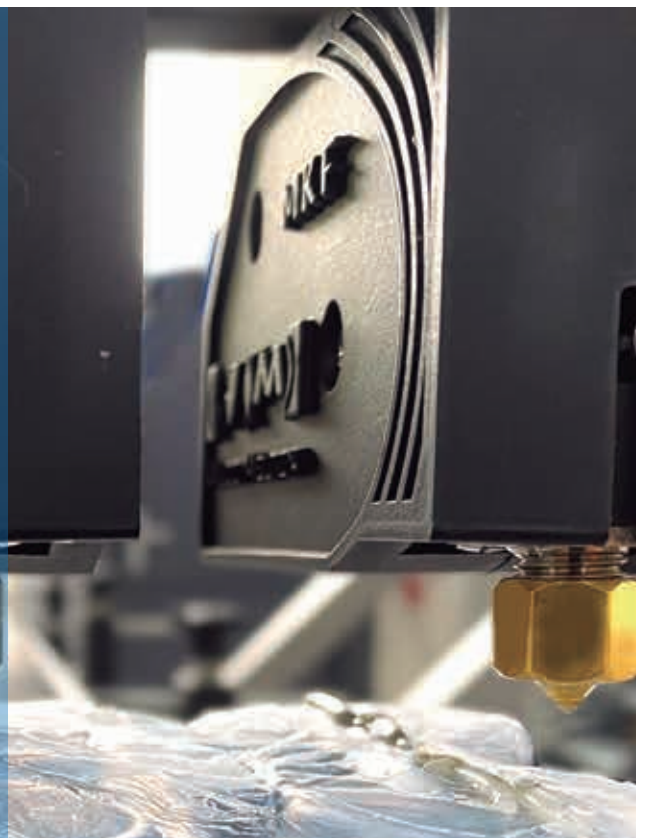
Boxes

PET Bottle packages

Bags and sacks

Can packages

Other stackable material



# VISION INSPECTION

ClearVision quality inspection systems for the packaging industry include advanced thermal imaging technology to detect the heat signature of recently applied hot melt adhesive or heat seal.



CLEARVISION

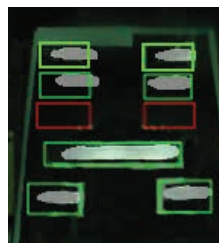
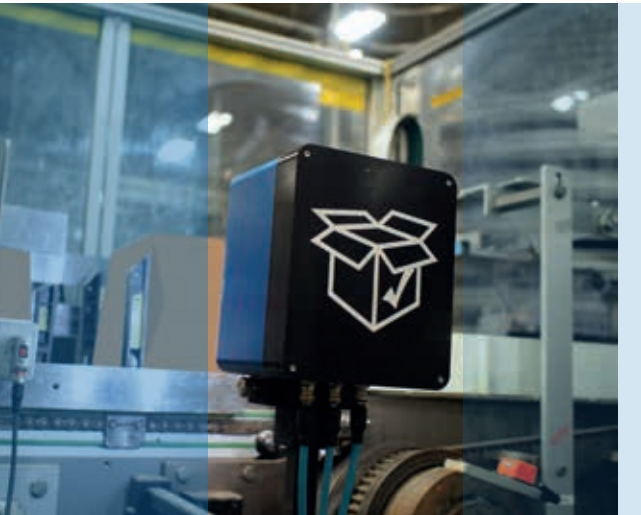
As packages or pouches travel past the inspection point, high-precision cameras capture thermal images that are instantly analyzed by proprietary software. The system identifies critical defects by comparing each package or pouch against programmed quality parameters, automatically rejecting non-compliant items without disrupting production speed.



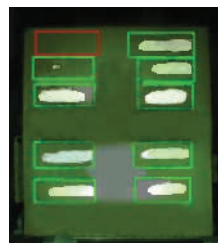
PACKCHEK

## END-OF-LINE PACKAGING

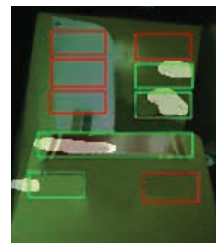
PackChek inspects every package to verify precise hot melt adhesive placement without the space limitations of traditional sensors. This automated solution installs seamlessly at machine discharge points, eliminating the retrofit challenges that are common to packaging quality control processes.



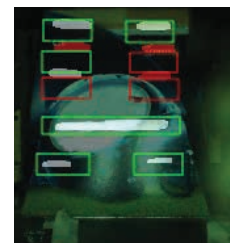
Missing glue beads



Weak glue beads



Crushed, torn or open flap



Misaligned glue beads



POUCHCHEK

## FLEXIBLE PACKAGING



Excessive Heat



Zipper Crunch Missing



Debris in Zipper

PouchChek is a fully integrated inspection system for heat-sealed packaging. This patented\* technology captures thermal and visible images simultaneously, overlaying them on a 22" monitor to identify seal integrity issues invisible to the naked eye. The non-destructive inspection process integrates easily with existing production lines and can be customized to your specific packaging requirements.

\*Patented in Belgium, Czech Republic, France, Germany, United Kingdom, Italy, Netherlands, Norway, Poland, Spain, Sweden, United States

# SERVICE & PARTS

## LOCAL SUPPORT WITH GLOBAL REACH

We are committed to providing fast and effective support to all our customers, no matter where they are located. Valco Melton has built a strong network of direct field technicians, supported by our local distributors, to ensure responsive service in over 80 countries worldwide.

### PREVENTIVE MAINTENANCE


Scheduling professional preventive maintenance in the required frequency keeps your system in optimal conditions, avoiding unexpected production stops.

### EQUIPMENT REPAIRS

We bring your equipment to our facilities for in-depth repairs that require specific tools, parts, and resources that can only be found at our warehouse.

### TECHNICAL SERVICE

In the event of a technical problem that cannot be fixed remotely, our skilled technicians travel to your facilities to solve it on-site.



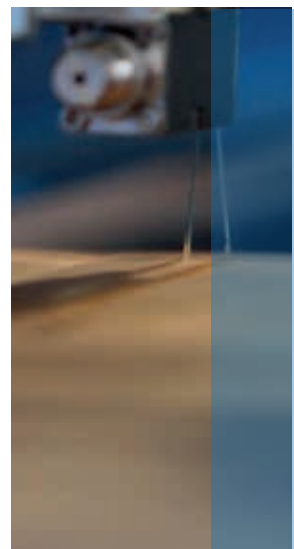
**75+**  
**DIRECT**  
**FIELD**  
**TECHNICIANS**

Plus a strong network of  
authorized technical support  
through VM's distributors

## SPARE PARTS

We design and manufacture in-house all kinds of compatible and reliable industry standard parts, accessories, and upgrade options to support our customers throughout every step of their production processes.

- 1.** Stocked and available at multiple global locations for immediate shipping
- 2.** Fully compatible with other industry standards
- 3.** Our parts work directly with your current system with no modifications needed. In-house manufacturing to reduce dependancy on external supply chains
- 4.** Backed by dedicated technical support



## Global Headquarters

Cincinnati, USA

+1.513.874.6550 | [info@valcomelton.com](mailto:info@valcomelton.com)

## The Americas,

### Manufacturing, Sales & Service Centers

Ciudad de Mexico, Mexico

+52.55.627831727 | [mexico@valcomelton.com](mailto:mexico@valcomelton.com)

Bogota, Colombia

+57.313.421.0926 | [colombia@valcomelton.com](mailto:colombia@valcomelton.com)

Sao Paulo, Brazil

+55.11.3071.2117 | [brazil@valcomelton.com](mailto:brazil@valcomelton.com)

## ClearVision Technologies

Vancouver, Canada

+1.604.998.4012 | [canada@valcomelton.com](mailto:canada@valcomelton.com)

## GMS-VanSco - USA West Coast

Petaluma, CA, USA

+1.707.285.3392 | [inquiry@gmsvansco.com](mailto:inquiry@gmsvansco.com)

## Asia - Pacific

### Manufacturing, Sales & Service Centers

Bangalore, India

+91.80.46553300 | [india@valcomelton.com](mailto:india@valcomelton.com)

Shanghai, China

+86.592.591.7854 | [china@valcomelton.com](mailto:china@valcomelton.com)

Seoul, Korea

+82 10 6781 3642 | [korea@valcomelton.com](mailto:korea@valcomelton.com)

Quezon City, Philippines

+63 917 535 0891 | [philippines@valcomelton.com](mailto:philippines@valcomelton.com)

Jakarta, Indonesia

+62 811 9112872 | [indonesia@valcomelton.com](mailto:indonesia@valcomelton.com)

Tokyo, Japan

+03-6423-0397 | [japan@valcomelton.com](mailto:japan@valcomelton.com)

Ho Chi Minh City, Vietnam

+84 938 828 875 | [vietnam@valcomelton.com](mailto:vietnam@valcomelton.com)

Kuala Lumpur, Malaysia

+60 1114 344 981 | [malaysia@valcomelton.com](mailto:malaysia@valcomelton.com)

## Europe, Middle East & Africa

### Manufacturing, Sales & Service Centers

## European Headquarters

Orkoien, Spain

+34 948 321 580 | [spain@valcomelton.com](mailto:spain@valcomelton.com)

Düsseldorf, Germany

+49 211 984 798-0 | [germany@valcomelton.com](mailto:germany@valcomelton.com)

Brescia, Italy

+39 030 2732544 | [italy@valcomelton.com](mailto:italy@valcomelton.com)

Nieuw-Vennep, The Netherlands

+31 252-673673 | [benelux@valcomelton.com](mailto:benelux@valcomelton.com)

Telford, England, UK

+44 1952-677911 | [uk@valcomelton.com](mailto:uk@valcomelton.com)

Długoleka, Poland

+48 71 889 04 50 | [poland@valcomelton.com](mailto:poland@valcomelton.com)

Fleurieu-sur-Saône, France

+33 (0) 4 75 78 13 73 | [france@valcomelton.com](mailto:france@valcomelton.com)

Budapest, Hungary

+36 1-214-4705 | [hungary@valcomelton.com](mailto:hungary@valcomelton.com)

Prague, Czech Republic

[czech@valcomelton.com](mailto:czech@valcomelton.com)

Istanbul, Turkey

+90 212 327 99 71 | [turkey@valcomelton.com](mailto:turkey@valcomelton.com)

Sharjah, UAE

+971.521305960 | [uae@valcomelton.com](mailto:uae@valcomelton.com)

Riyadh, Saudi Arabia

+966 544659139 | [saudi Arabia@valcomelton.com](mailto:saudi Arabia@valcomelton.com)

Lagos, Nigeria

+234 812 379 1199 | [nigeria@valcomelton.com](mailto:nigeria@valcomelton.com)

ERO s.r.l

Brescia, Italy

+39 030 2731503 | [info@ero-gluers.com](mailto:info@ero-gluers.com)

## Direct offices and authorized distributors

across 96 locations worldwide



ALL LOCATIONS



Adhesive Dispensing & Quality Inspection Systems