



## FOSHAN VERABE PET PRODUCTS CO., LTD

Think enough for our pets and make it a better world

2007 - 2023

# 01

## About Us

Company introduction

佛山市宠圣宠物用品有限公司  
FOSHAN VERABE PET PRODUCTS CO., LTD

# Company Profile



**Verabe** has been deeply engaged in the field of metal pet products and related products for over **17 years**. Our own factory covers an area of 23.5 acres and has over 100 employees. The company adheres to the concept **of putting pets first and providing them with a better home**.

We continuously innovates and strives for excellence, now is developed into a pioneering high-tech enterprise integrating product design, research and development, production and sales, **with several domestic and international invention patents and over 20 utility model patents**.

We have automated equipment production line and our production capacity is more than **620,000 sets of dog cages annually**. With outstanding R&D and design capabilities and excellent product quality, services, our products are highly favored by international customers. The company has established continuous and stable cooperative relationships with **retail industry leaders such as Home Depot, Costco, and Aldi**.



# Company History



Due to the expanded business, old plants no longer enough, Verabe had to rent a bigger plant, including warehouse over 10,000 m<sup>2</sup>

**2013**

**2007**

Foshan Verabe Metal Products Co., Ltd founded, featuring metal pet products, with manufacturing plant 5,000m<sup>2</sup> and warehouse 2,000 m<sup>2</sup>



**2014**

Verabe built up a sewing plant and started to manufacture the sewing pet products on our own



Verabe built a new factory and office building over 15,000m<sup>2</sup>, consolidating all facilities into one location under new company name Foshan Verabe Pet Products Co., Ltd

**2018**

**2025**

New factory in Cambodia with over 10,000m<sup>2</sup> was grandly open in May



# Company Certificates



# Company Qualification





# 02

## Brand Positioning

---

佛山市宠至宠物用品有限公司  
FOSHAN VERABE PET PRODUCTS CO., LTD

“BINGDUN” and “VERABE”, combination of the founder’s names.

Since establishment in 2007, our brand has been positioning to mid-to-high-end pet products. We have always been committed to independent research and development. Our patented design: the sliding door cage series are very unique in the global market, and their sales have been steadily increasing year by year.

“Verabe is the best I have ever met.” --- We have received high praise from customers in Europe, America and internationally for our stable good quality and excellent service.

With our continuous investment and achievements in research and development, as well as our meticulous attention to quality and service, VERABE has already earned the honor of high-end products and services on the international stage.



A close-up photograph of a fluffy dog and a fluffy cat lying together in a grassy area. The dog is on the left, looking towards the camera with its eyes partially closed. The cat is on the right, resting its head on the dog's head. The scene is bathed in warm, golden light, suggesting late afternoon or early morning. The background is a soft-focus green lawn.

# Brand Culture

Think enough for our pets and make it a better world.

# 03

## Product Development

---

佛山市宠至宠物用品有限公司  
FOSHAN VERABE PET PRODUCTS CO., LTD

# Certificate of Patent



# New Product Innovation



**Swing & Sliding Door Pet Crate**  
*The ONLY design on the market*



**Comfort Pet Cot**  
*Lock-down™ Corner Design*

# More Safer More Funtional More User-friendly

- Independently developed by Verabe
- International Patented SWINGING Door & SLIDING Door Design
- Save approximately 60% of the floor space.
- It is safer, more worry-free, more considerate and more user-friendly.



# More Safer More Funtional More User-friendly

- Independently developed by Verabe
- International Patented SLIDING Door Design
- Save approximately 30% of the floor space.
- It is safer, more worry-free, more considerate and more user-friendly.



# Stronger More secured More durable

- Independently developed by Verabe
- International Patented Crate Fit and Lock-Down Corner Design
- Compliant with the EU BS EN1725:1998 safety testing standard for household beds
- It is stronger, not easy to deform or break down, more secured and more durable



# Foldable Portable Spacious

- Foldable and portable two-layer cat cage
- Providing a larger space for pets and allowing them to release their nature of enjoying climbing and jumping.
- The first floor can be equipped with cat litter boxes, feeding and watering devices, cat scratching posts, etc.



# 04

## Product Introduction

---

佛山市宠至宠物用品有限公司  
FOSHAN VERABE PET PRODUCTS CO., LTD

# Broad Product Categories



**Pet**



**Small Animal & Rabbits**



**Parrot**



**Poultry**



**Pest Control**

# Manufacturing Capabilities



**Iron Wire**



**Iron Tube**



**Sewing**



**Others**

# 05

## Factory Introduction

---

佛山市宠至宠物用品有限公司  
FOSHAN VERABE PET PRODUCTS CO., LTD

# Manufacturing & Warehouse



# Manufacturing & Warehouse



# Manufacturing Plant



# Manufacturing Plant



# Manufacturing Plant



# Warehouse



# Warehouse



# Warehouse



# Loading Container



# Manufacturing & Warehouse (CAMBODIA)



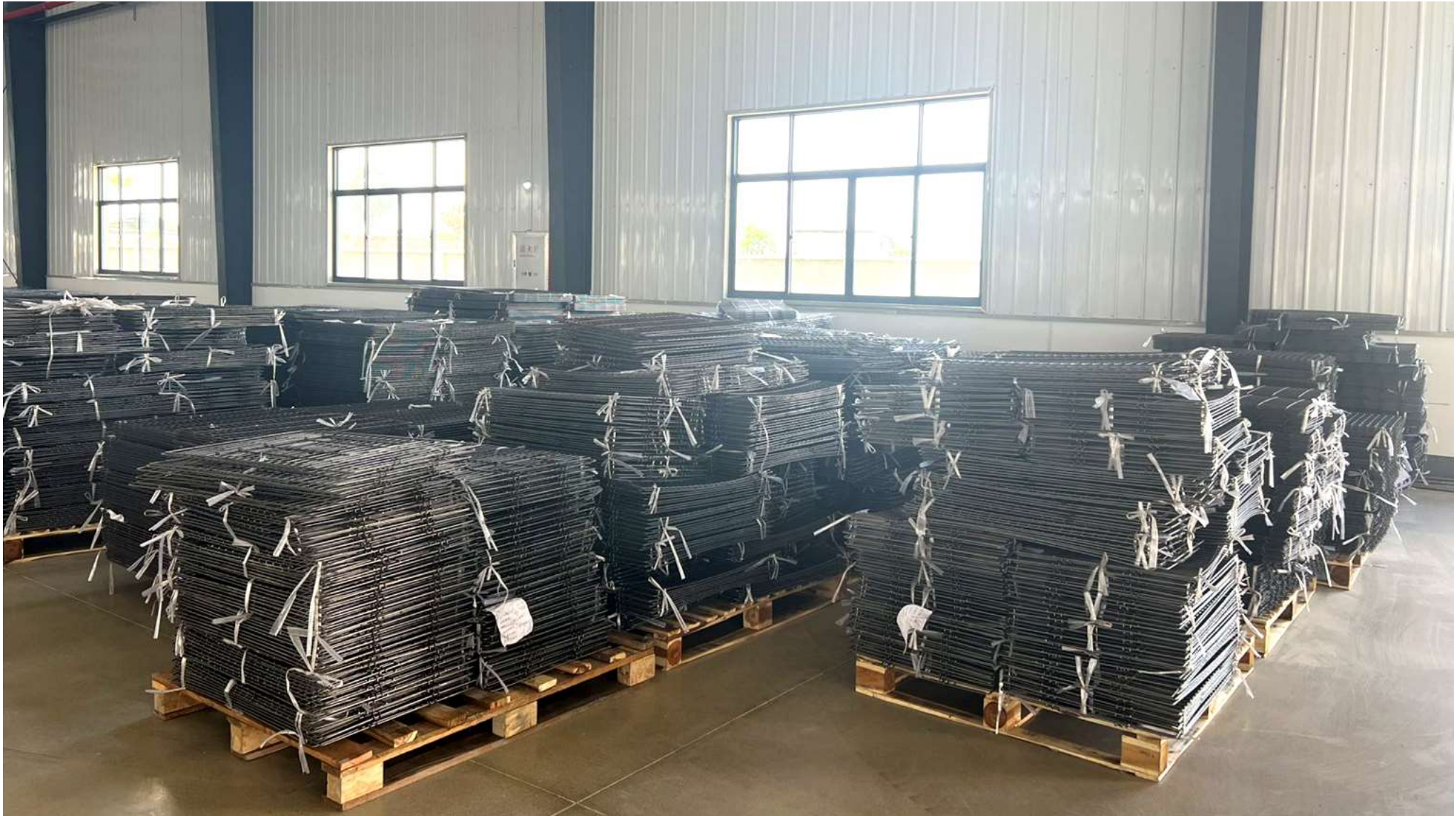
# Manufacturing Plant (CAMBODIA)



# Manufacturing Plant (CAMBODIA)



# Warehouse (CAMBODIA)



# Warehouse (CAMBODIA)



# Factory Office



# 06

**Factory  
Strength**

VERABE  
佛山市宠至优品有限公司  
FOSHAN VERABE PET PRODUCTS CO., LTD

# Factory Strength

---



- **Over 17 years' manufacturing & export experience**
- **Own factory land of 23.5 acres**
- **Over 100 employees, 80% of them are stable old workers for over 5 years**
- **Auto-welding machines**
- **Annual production capacity: 620,000 sets of dog cages**

- **Stable Supply Chain**

- Over 10 years' partnership with suppliers
- Emergency response plans. For instance, during the epidemic, we ensured the continuity of production through our own supply chain, and the delivery rate of customer orders reached 100%

- **Experienced Engineer and R&D team**

- Consists of 12 staffs in the team.
- Developing new products each year
- Possessing domestic invention patents, international invention patents and utility model patent for more than 20

- **QC Quality Control**

## QMC

- ISO certification
- Factory audit annually
- Third-party test reports (such as GMP, COC)

## Inspection stage

- Raw material sampling inspection
- Complete inspection of finished products: 100% inspected

## Customer feedback

- Product qualification rate has exceeded 99.8% for three consecutive years
- Customer complaint rate is lower than 0.2%

# Factory Strength

- Maintain a stable long-term partnership with 80% of our customers



# Our Offices



# Location



## **MADE IN CHINA**

Add: 7 Dongxiang Industrial Area, Shitang, Heshun, Lishui, Nanhai, Foshan city, Guangdong, China

## **MADE IN CAMBODIA**

Add: Ou Ta Pung Village, Roka Kaoh Commune, Kong Pisei District, Kampong Speu Province, Cambodia



## **Office 1:**

Add: AIA Finance Building 1, Denghu East Road No. 1, Guicheng Street, Nanhai, Foshan City, Guangdong, China

## **Office 2:**

Add: 7 Dongxiang Industrial Area, Shitang, Heshun, Lishui, Nanhai, Foshan city, Guangdong, China



# THANKS

VERABE  
FO SHAN VERABE  
佛山市宠圣宠物用品有限公司  
FOSHAN VERABE PET PRODUCTS CO., LTD

Tel: +86-757-85127287

[www.verabe.com](http://www.verabe.com)