



<<< Receive our Newsletter

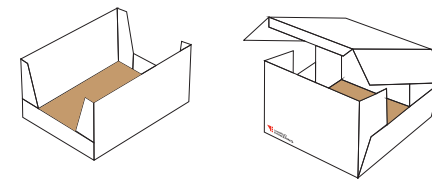
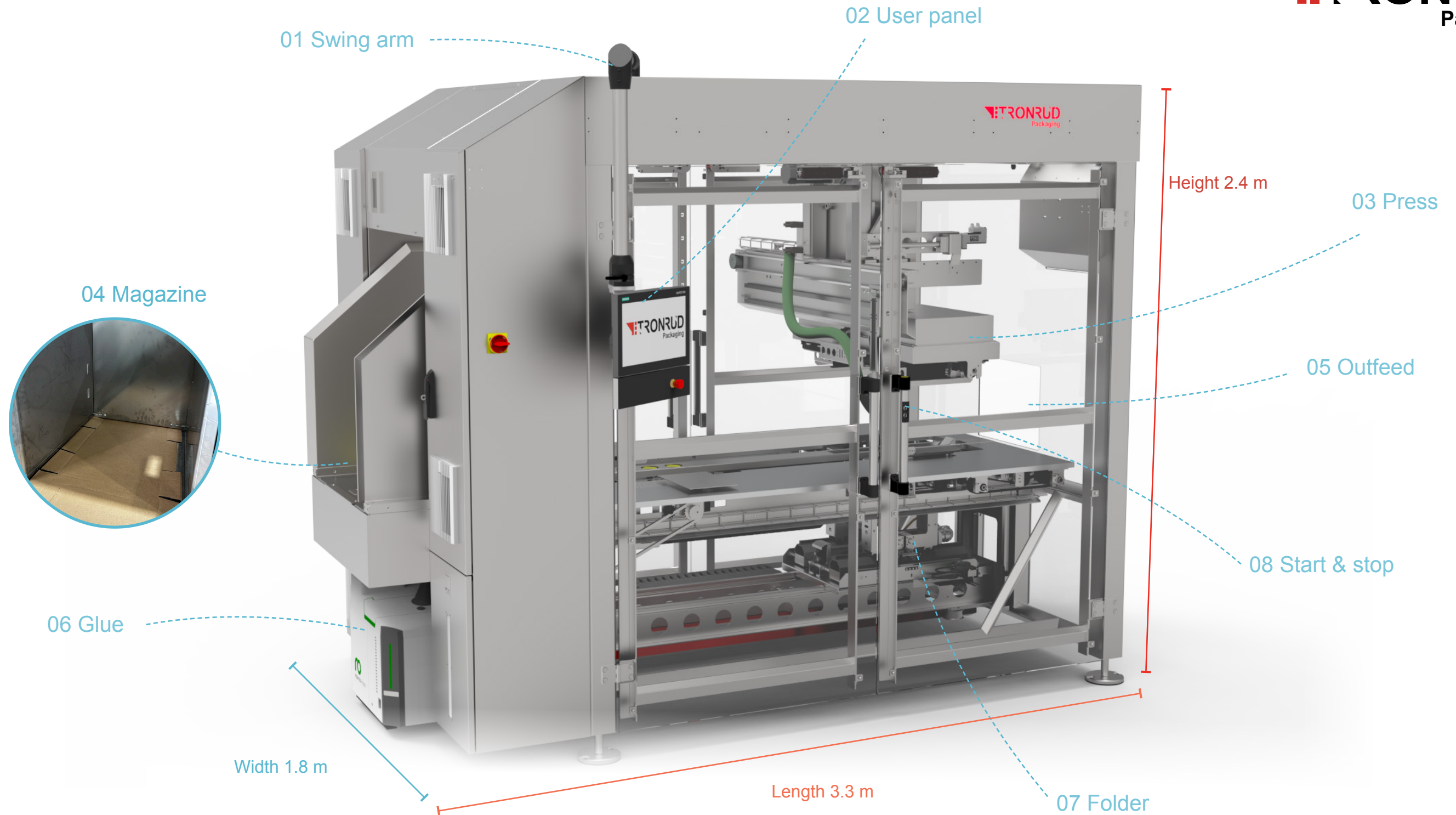
TRONRUD
Packaging



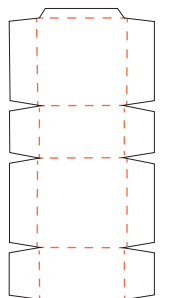
WCP Wrap Around Case Packer
Suitable for a wide variety of products



<<< Learn more



Formats example



Blank example

01 Ergonomical & flexible
02 Intuitive UP with easy recipe setup

03 Flap press zone for gluing
04 Horizontal corrugated magazine

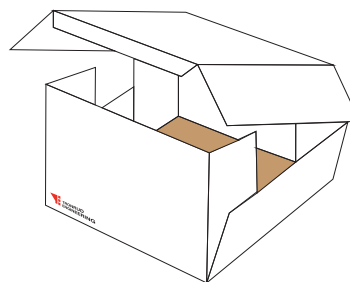
05 4 directions of outfeed
06 Hot melt glue

07 Blank folding device
08 Quick operation from all the doors



<<< Learn more

Case dimensions



Length 266 - 400 mm
Width 200 - 300 mm
Height 120 - 300 mm

Automated changeover
Flexible
Low air consumption
Ergonomic & User-friendly.
Boost your bottom line with low TCO

Performance

TCO
Less than

3%

CPM
Cases per minute

17

CT
Changeover time (min)

Max **5**

Packs all Shapes



INSIGHT

01 Performance and analytics

02 Remote commissioning

03 Online documentation

04 Digital support and service

One place for
data, performance, maintenance
and learning
Puts AI companion onto your
machine

Tronrud Engineering AS - Flyplassveien 21 - Eggemoen - 3514 Hønefoss - Norway