

jwipc

JWIPC

Industrial Panel PC

Product Recommendation

Being Smart, Being Intelligent
www.jwipc.com





jwipc

Being Smart, Being Intelligent

01

Market
Overview

02

Product
Overview

03

Business
Cooperation

0 PART 1

Market Overview

Industrial Panel PC Market Trends
Industrial Panel PC Application Analysis



Industrial PC (IPC) Market Size Analysis

Global Market Size

5 billion USD (2023 data)

Projected to reach 6.6 billion by 2028, CAGR of 5.5%

Chinese Market Size

2.17 billion USD (2023 data)

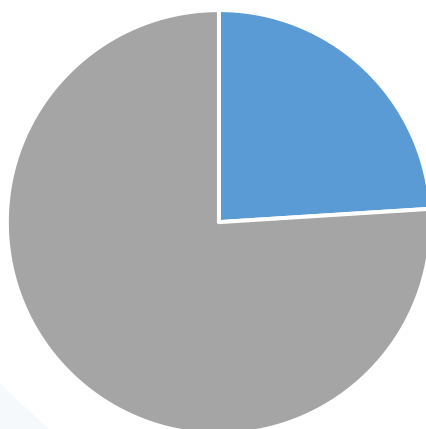
Year-on-year growth of 6.13%, CAGR of 7.41%

Regional Distribution

China accounts for 26% of the global market

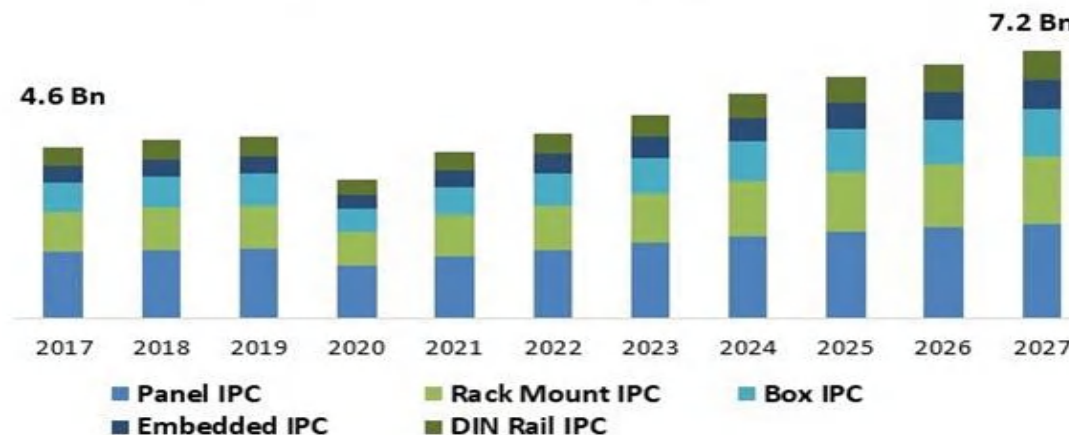
Eastern and Southern China collectively account for 64.4% of the Chinese Market

Global Market share



■ Touch Panel PC ■ Other Industrial PC

Industrial PC Market Size, By Type, 2017-2027



Industrial Panel PC Market Trends

High Computing Power

Replaces monitors & separate
Box PC, Reduces total cost of
ownership

Customization Capabilities

Tailored to exact needs:
Custom sizes
reinforced housings
environmental protection

Brand Alternative

Full certifications
Enhanced quality & service

Capacitive Touchscreens

Eliminate the effect of high
environmental interference
Better customer experience

Industrial Panel PC Application Analysis

Industrial Panel PC - Customer Application Types

Industrial Digitization (Smart Factories)
55%

Industrial Automation Control
45%

MES/SFC

Edge

E-SOP

Logistics

Others

Production
Equipment

Custom
Equipment

Machine
Tool

Environmental
Protection

Others

High Demand with Project-Based Purchasing
Mainly sourced from software solution providers
Faces substitution risks

Extended testing periods, minimal design changes
Continuous demand stream
Higher unit margins

0 PART 2

Industrial Panel PC Product Recommendation

JWIPC Product Summary

Industrial Panel PC Product Introduction

IVS/OVS/LIT/EIP/ARMP/IOP/TDS



Industrial Panel PC



Standard Series
IVS



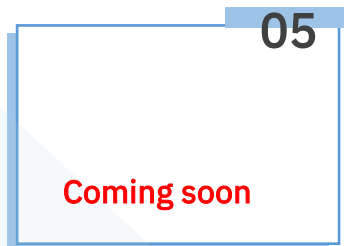
Modular Series
OVS



Light industrial Series
LIT



Expandable Series
EIP



Open-Frame Series
OFF



Stainless Steel Series
SSP



Operator Panel Series
IOP



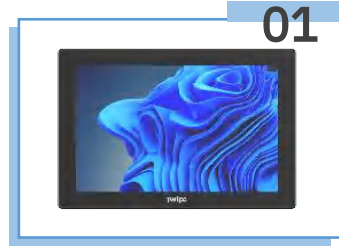
Vehicle-Mount Series
VMP

Industrial Panel PC



RISC Platform
ARMP

Industrial Monitor



Industrial Monitor
TDS

IVS Series - Standard Panel PC

Integrated Data Visualization System



IVS Series

Product Specification

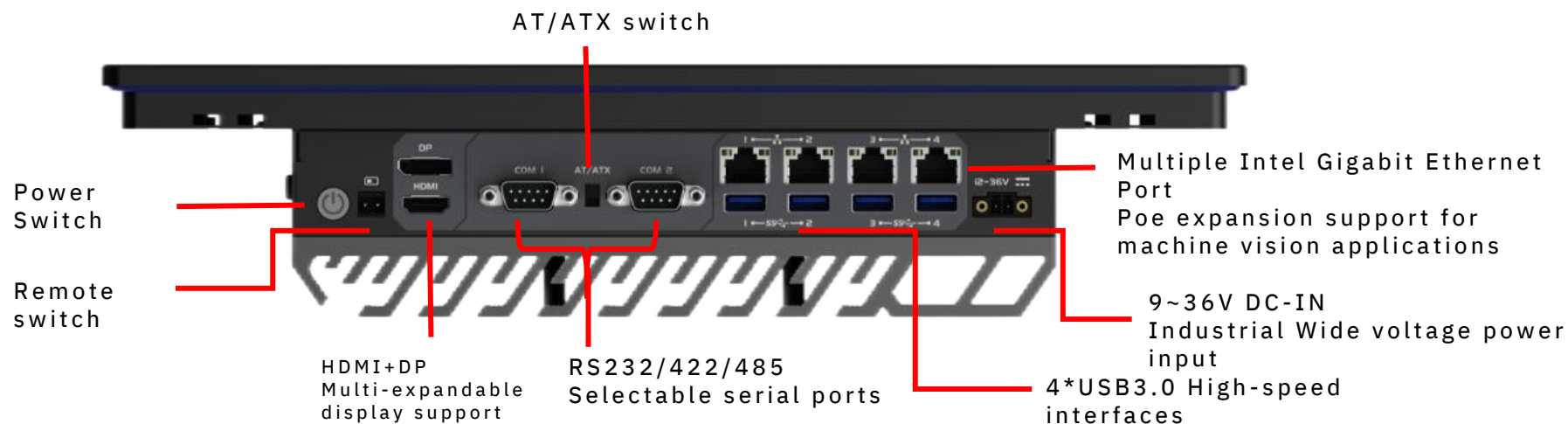


Size (in)	Model	Display Info	Atom		Core-U/P/H		Core-S	
			Platform 1	Platform 2	Platform 3	Platform 4	Platform 5	Platform 6
10.1	IVS-101	<ul style="list-style-type: none">16:10350nits1280x800	<ul style="list-style-type: none">EHL J6412/64134xUSB3.0, 2xLAN1xHDMI1x2.5” HDD bay2xRS232/422/485 bios switch	<ul style="list-style-type: none">Alder Lake-NN100、N95、N97、i3-N3054xUSB3.0, 5xUSB320, 2xLAN6xCOM	<ul style="list-style-type: none">Alder lake-U 12th4xUSB3.0, 4xLAN1xHDMI, 1xDP1x2.5” HDD bay2xRS232/422/485 bios switch	<ul style="list-style-type: none">Raptor lake-U 13th4xUSB3.0, 4xLAN1xHDMI, 1xDP1x2.5” HDD bay2xRS232/422/485 bios switch	<ul style="list-style-type: none">H110 6/7/8/9 65W4xUSB3.0, 4xLAN1xHDMI, 1xDP1x2.5” HDD bay2xRS232/422/485 bios switch	<ul style="list-style-type: none">H610 12/13/14 35W/65W4xUSB3.0, 4xLAN1xHDMI, 1xDP1x2.5” HDD bay2xRS232/422/485 bios switch
10.4	IVS-104	<ul style="list-style-type: none">4:3350/500/350nits1024x768						
12.1	IVS-121							
15.0	IVS-150							
15.6	IVS-156	<ul style="list-style-type: none">16:9300nits1920x1080	<ul style="list-style-type: none">EHL J6412/64134xUSB3.0, 2xLAN1xHDMI1x2.5” HDD bay2xRS232/422/485 bios switch2xRS232 3 line	<ul style="list-style-type: none">Alder Lake-NN100、N95、N97、i3-N3054xUSB3.0, 5xUSB320, 2xLAN6xCOM	<ul style="list-style-type: none">Alder lake-U 12th4xUSB3.0, 4xLAN1xHDMI, 1xDP1x2.5” HDD bay2xRS232/422/485 bios switch2xRS232 (3-wire)	<ul style="list-style-type: none">Raptor lake-U 13th4xUSB3.0, 4xLAN1xHDMI, 1xDP1x2.5” HDD bay2xRS232/422/485 bios switch	<ul style="list-style-type: none">H110 6/7/8/9 65W4xUSB3.0, 4xLAN1xHDMI, 1xDP1x2.5” HDD bay2xRS232/422/485 bios switch2xRS232 (3-wire)	<ul style="list-style-type: none">H610 12/13/14 35W/65W4xUSB3.0, 4xLAN1xHDMI, 1xDP1x2.5” HDD bay2xRS232/422/485 bios switch
17.0	IVS-170	<ul style="list-style-type: none">5:4250nits1280x1024						
18.5	IVS-185	<ul style="list-style-type: none">16:9250nits1920x1080						
21.5	IVS-215	<ul style="list-style-type: none">16:9300nits1920x1080						

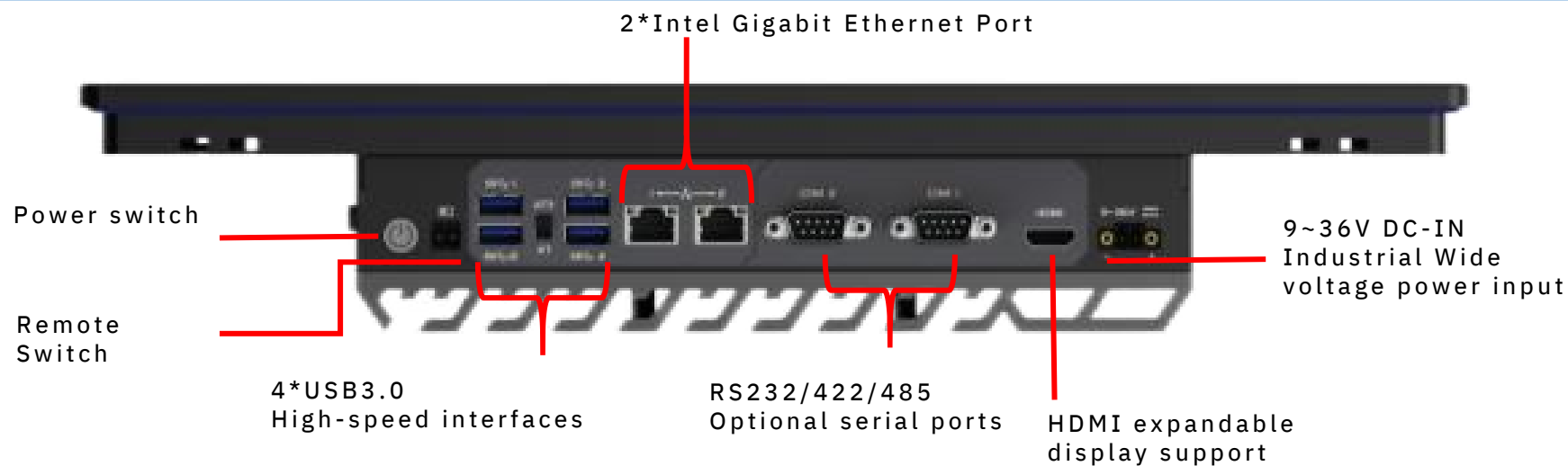
Selectable Resistor and Capacitor

IVS Series I/O Connectivity

Core



Atom



IVS Series

Product Features



Efficient Thermal Design

- Dual heat pipes + thickened Single plate (Max 40W CPU)
- Innovative cooling system (Max 65W CPU)
- Thermal resistance coefficient < 0.14



Robust Protection

- ESD lvl3 + EFT lvl4 protection
- Surge-protected Ethernet Ports
- IP65 front panel (dustproof, water-jet resistant, oil-proof)



Operating System



IVS Series - Standard Panel PC

Based on Intel Core/Atom mainstream platforms
Industrial grade design for 24/7 continuous operation



Mounting Options for different industrial Scenarios

Desktop	Stand	Embedded	Overhead	Wall mount



Display Panel

- Multiple sizes: 10.1"~21.5"
- HD resolution/16M colors/extend lifespan
- 250~350nit brightness (high-brightness optional)



Touch Options

- Capacitive/Resistive touch screen
- Capacitive: 10 point multi-touch/≥50M cycles
- Resistive: Single-touch/≥35M cycles



Produce Certifications

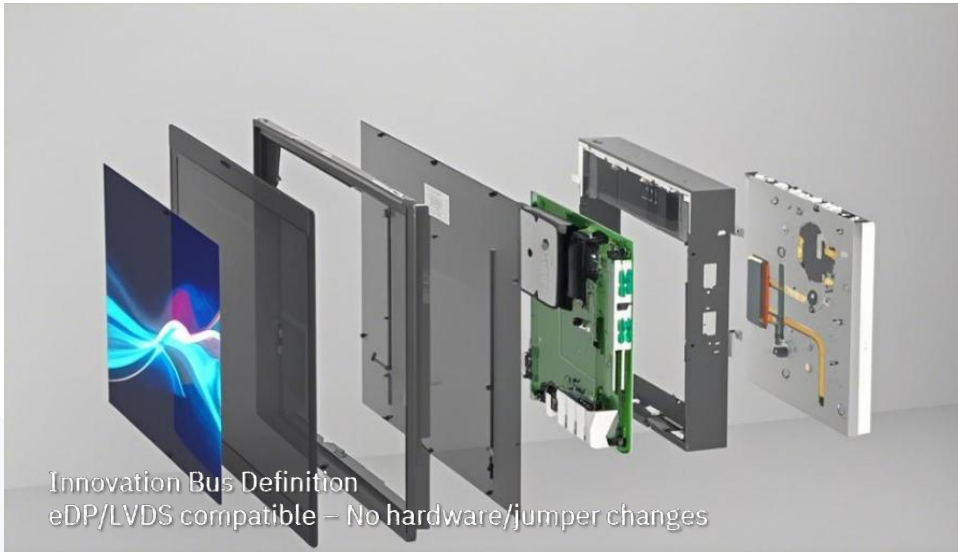


IVS Series

Product Features

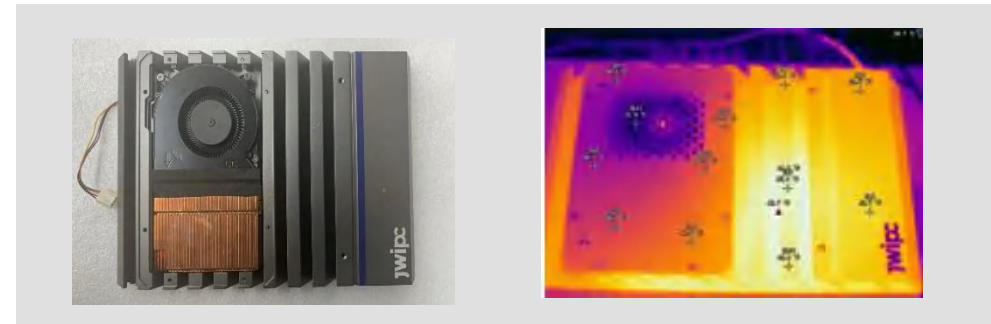


15W Thermal Solution



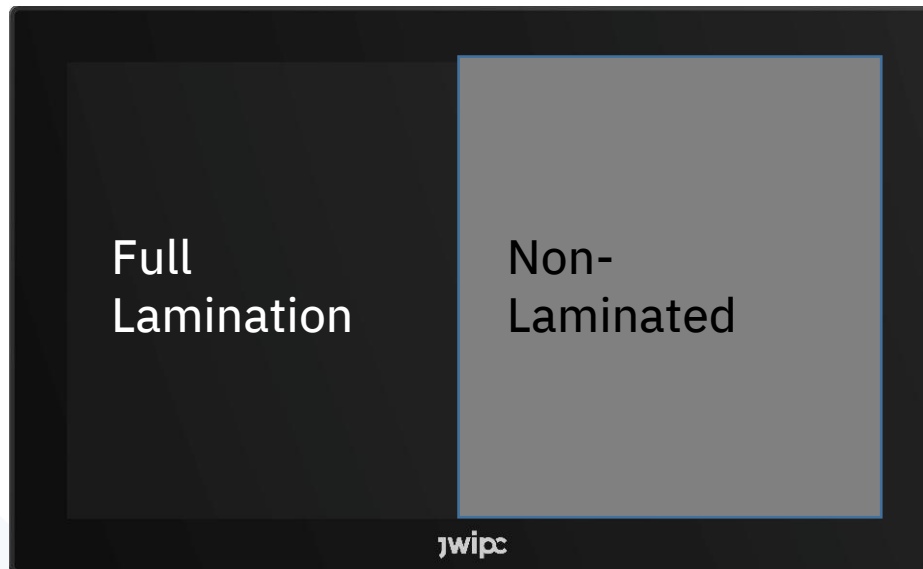
- **Dual Heat Pipe Design**
high-efficiency thermal design ensures reliable long term operation

65W Thermal Solution



Fanless Operation: Supports TDP<40W
Active Cooling Required: For 40W<TDP<65W

- Low Thermal-resistance Design: Advance heatsink and ultra compact heat exchanger, (**resistance coefficient<0.14**)
- Custom slim-profile Smart Fan increase airflow by >20%



- AG/AF Coating: Available for all 10.1"~21.5" models
- Full Lamination: Standard on 10.1"/15.6" variants

AG: Anti-gloss

AF: Anti-finger

✓ **Reduced Reflection & Glare**

Enhances display quality with <1% reflectivity

Improves contrast ratio and color saturation

✓ **Fingerprint/Oil Resistance**

<1µm nano-coating allows easy wiping without special cleaners

✓ **Extended Lifespan**

Minimizes scratches and long-term residue buildup

Prevents screen degradation or touch failure

✓ **Improved User Experience**

Balanced aesthetics and functionality

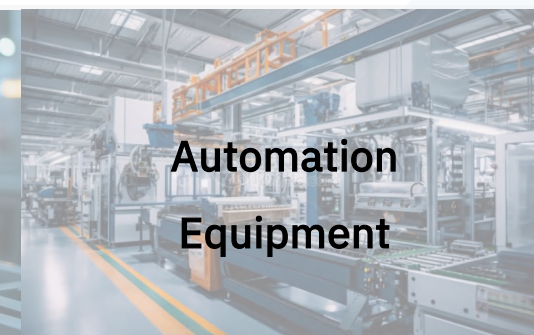
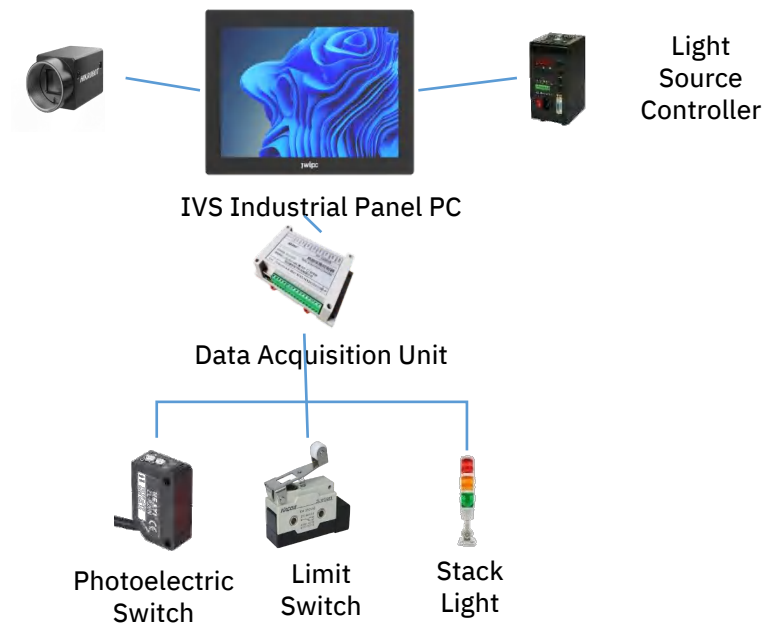
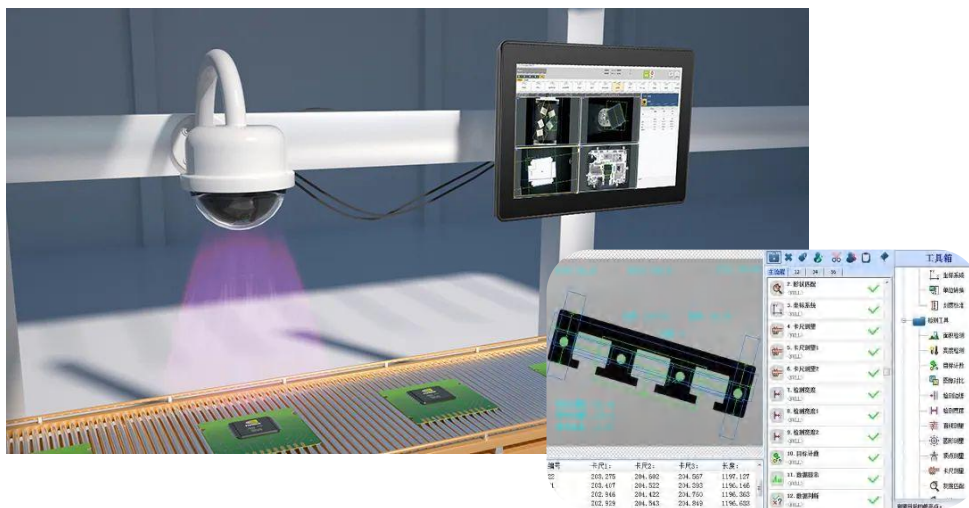
Smooth touch feel with reduced eye strain

Enhanced readability in industrial environments

IVS Series Application Scenarios



IVS Automation - Light-Duty Vision Applications



OVS Series - Open Frame Panel PC

Open Frame Data Visualization System



OVS Series

Product Specification



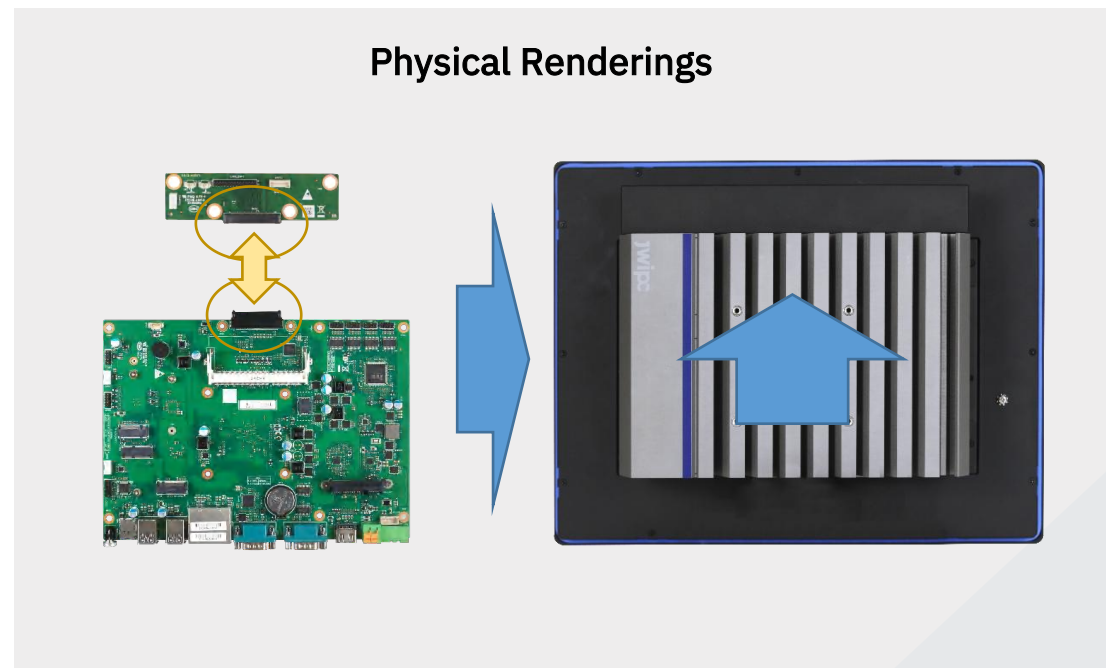
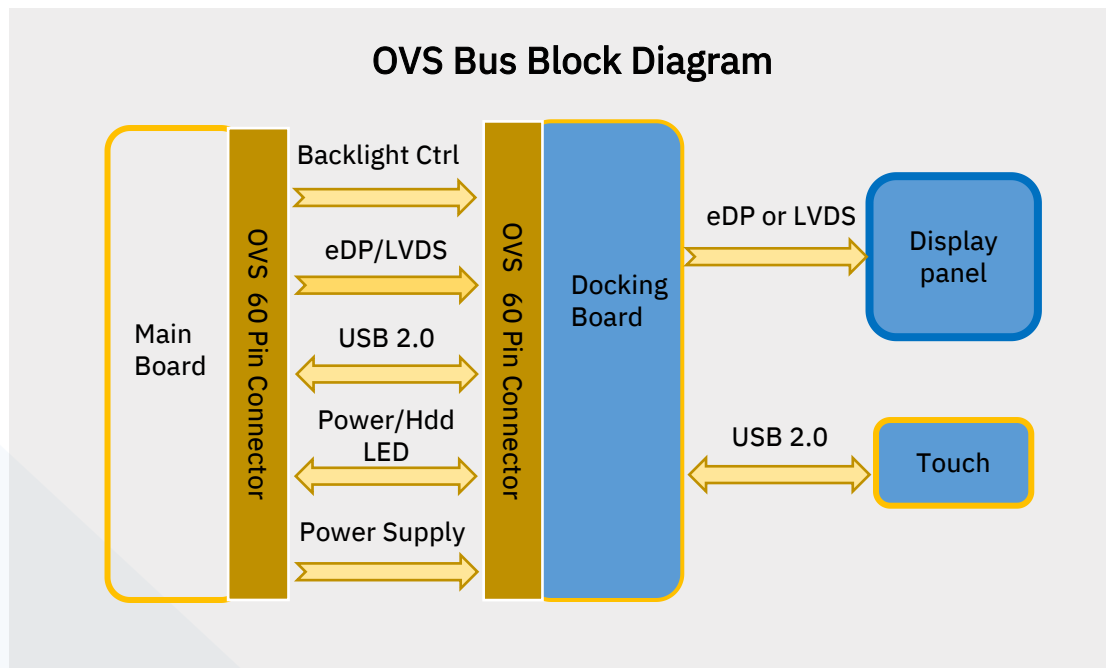
Size (in)	Model	Display Info	Module 1	Module 2	Module 3	Module 4	Module 5	Module 6
12.1	OVS-121	<ul style="list-style-type: none"> • 4:3 • 300nits • 1024x768 	<ul style="list-style-type: none"> • BYT J1900 • 4xUSB3.0, 2xLAN • 1xHDMI • 1xsim slot • 2xRS232/422/485 	<ul style="list-style-type: none"> • EHL J6412/6413 • 4xUSB3.0, 2xLAN • 1xHDMI • 1x2.5" HDD bay • 2xRS232/422/485 bios switch 	<ul style="list-style-type: none"> • Alder lake-U 12th • 4xUSB3.0, 4xLAN • 1xHDMI, 1xDP • 1x2.5" HDD bay • 2xRS232/422/485 bios switch 	<ul style="list-style-type: none"> • Raptor lake-U 13th • 4xUSB3.0, 4xLAN • 1xHDMI, 1xDP • 1x2.5" HDD bay • 2xRS232/422/485 bios switch 	<ul style="list-style-type: none"> • H110 6/7/8/9 65W • 4xUSB3.0, 4xLAN • 1xHDMI, 1xDP • 1x2.5" HDD bay • 2xRS232/422/485 bios switch 	<ul style="list-style-type: none"> • H610 12/13/14 35W/65W • 4xUSB3.0, 4xLAN • 1xHDMI, 1xDP • 1x2.5" HDD bay • 2xRS232/422/485 bios switch
15.0	OVS-150							
15.6	OVS-156	<ul style="list-style-type: none"> • 16:9 • 300nits • 1920x1080 		<ul style="list-style-type: none"> • EHL J6412/6413 • 4xUSB3.0, 2xLAN • 1xHDMI • 1x2.5" HDD bay • 2xRS232/422/485 bios switch • 2xRS232 (3-wire) 	<ul style="list-style-type: none"> • Alder lake-U 12th • 4xUSB3.0, 4xLAN • 1xHDMI, 1xDP • 1x2.5" HDD bay • 2xRS232/422/485 bios switch • 2xRS232 (3-wire) 	<ul style="list-style-type: none"> • Raptor lake-U 13th • 4xUSB3.0, 4xLAN • 1xHDMI, 1xDP • 1x2.5" HDD bay • 2xRS232/422/485 bios switch 	<ul style="list-style-type: none"> • H110 6/7/8/9 65W • 4xUSB3.0, 4xLAN • 1xHDMI, 1xDP • 1x2.5" HDD bay • 2xRS232/422/485 bios switch • 2xRS232 (3-wire) 	<ul style="list-style-type: none"> • H610 12/13/14 35W/65W • 4xUSB3.0, 4xLAN • 1xHDMI, 1xDP • 1x2.5" HDD bay • 2xRS232/422/485 bios switch
17.0	OVS-170	<ul style="list-style-type: none"> • 5:4 • 250nits • 1280x1024 						
18.5	OVS-185	<ul style="list-style-type: none"> • 16:9 • 250nits • 1920x1080 						
21.5	OVS-215	<ul style="list-style-type: none"> • 16:9 • 250nits • 1920x1080 						

Selectable Resistor, Capacitor, and Module

OVS Series

Product Features - Modularity

Feature 1: OVS Bus – Modular Design



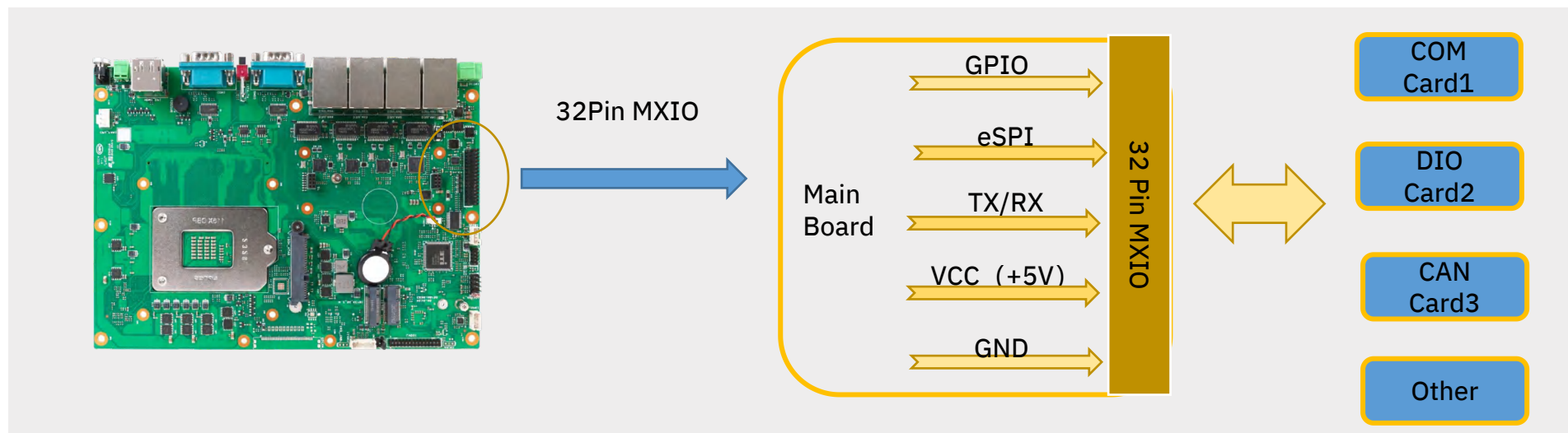
- **Modular Design:**
 - Compatible with multi-platform motherboards for future upgrades
 - Enables quick replacement for easier after-sales maintenance
- **Innovative Bus Definition:**
 - Supports standard eDP/LVDS without hardware modifications or jumper settings for flexible configuration options
- **Automotive-Grade Interfaces:**
 - Floating board-to-board connectors (non-cable, non-rigid)
 - Stress-resistant design for enhanced durability and reliability

OVS Series

Product Features - Daughterboard Expansion

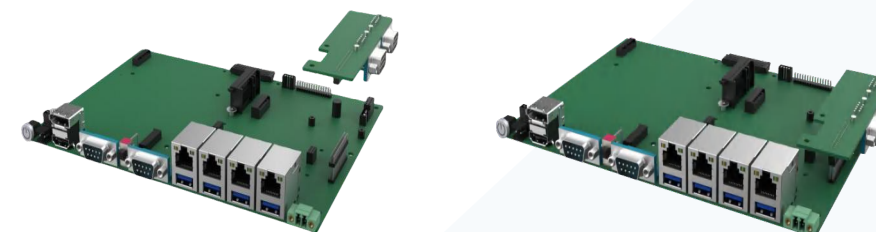
Feature 2: MXIO Interface - Rapid Expansion for Automation Needs

The onboard MXIO interface exposes GPIO, eSPI, TX/RX and other signals, enabling functional expansion via wiring or daughterboard connection:



Daughterboard Options	Isolated COM Card	CAN+GPIO Card	Light Source Control Card
Illustration			
Specifications	2× Isolated RS232 COM (DB9 Connector)	2× CAN, 4× Isolated DI, 4× Isolated DO (Two-layer Terminal Block)	4× Isolated DI, 4× Isolated DO, 4× Aperture Interfaces

Motherboard with Isolated COM Card (Illustration)

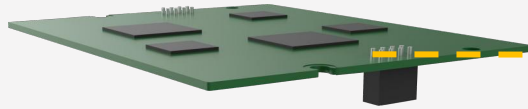


Custom daughterboards can be added to meet specific expansion requirements

OVS Series

Product Features - POE Power Supply

Feature 3: POE Power Supply --- Modular POE Power Design



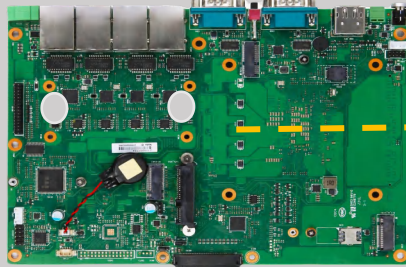
POE Power Board

Guarantees 25W single-port power output

Compliant with IEEE 802.3at standard

Single port: 25W (max)

4-port aggregate: 60W total power



Motherboard POE Power Interface

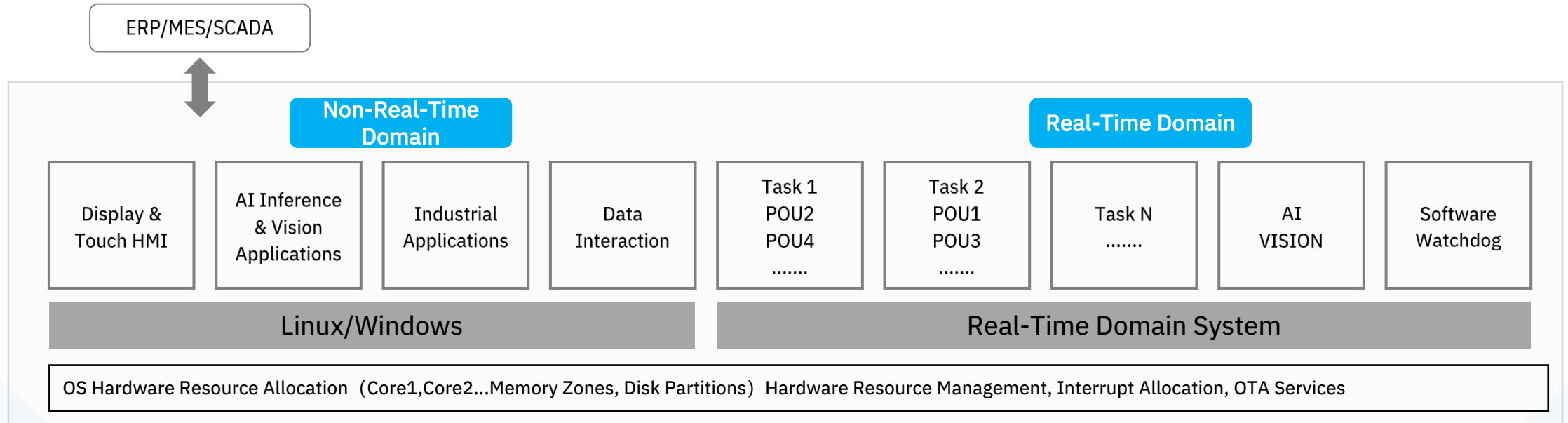
Dual-base fixation for stability and vibration resistance

Flexible optional expansion

Requires 4x Poe-capable Ethernet ports (Poe power board optional)

OVS Series

"Display-Vision-Control" Integrated Solution



JWIPC - OVS Open Frame Panel PC

"Display" + "Vision" + "Control"
Integrated Solution

LIT Series- Light industrial Panel PC

Light Industry Terminal



LIT Series

Product Specification



Size (in)	Model	Display info	Specification
10.1	LIT-101	<ul style="list-style-type: none">• 10:16• 300nits• 800x1280	<ul style="list-style-type: none">• Intel Jasper lake N5095
15.6	LIT-156-TGU	<ul style="list-style-type: none">• 16:9• 300nits• 1920x1080	<ul style="list-style-type: none">• Tiger lake 11th• Intel® Core TM i3-1115G4/• Intel® Core TM i7-1195G7• 4xUSB3.0, 2xLAN• 1xHDMI, 1xDP• 1xAudio• 2xRS232/422/485 bios switch• 1xRS232
18.5	LIT-185-TGU	<ul style="list-style-type: none">• 16:9• 250nits• 1920x1080	
21.5	LIT-215	<ul style="list-style-type: none">• 16:9• 250nits• 1920x1080• Supports IC Card Swiping	

LIT Series Product Models



LIT-101

- Intel® Jasper Lake N5095 Processor
- 10.1" LED Backlight Display
- 800×1280 Resolution
- Capacitive Touchscreen (10-Point Multi-Touch)
- Intel Jasper Lake Platform
- DC 12V Wide Voltage Input
- Expandable mSATA Support
- M.2 2230 Slot for Wi-Fi + BT Expansion



LIT-156

- Intel® 11th Gen Tiger Lake-U Processor
- 15.6" LED Backlight Display
- 1920×1080 Resolution
- IP65 Front Panel Protection
- 2× RS232/422/485 Interfaces
- 1× M.2 Key E 2230 Slot | 1× M.2 Key B 3052/3042 Slot
- DC 12-24V Wide Voltage Input | Anti-Loose DC-Jack



LIT-185

- Intel® 11th Gen Tiger Lake-U Processor
- 18.5" LED Backlight Display
- 1920×1080 Resolution
- IP65 Front Panel Protection
- 2× RS232/422/485 Interfaces
- 1× M.2 Key E 2230 Slot | 1× M.2 Key B 3052/3042 Slot
- DC 12-24V Wide Voltage Input | Anti-Loose DC-Jack



LIT-215

- Intel® 11th Gen Tiger Lake-U Processor
- 21.5" LED Backlight Display
- 1920×1080 Resolution
- IP65 Front Panel
- Fanless Cooling Design
- 2× RS232/422/485 Interfaces
- 1× M.2 Key E 2230 Slot | 1× M.2 Key B Slot
- Front Panel NFC Reader (Optional)
- DC 12-24V Wide Voltage Input | Anti-Loose DC-Jack



LIT Series

Application Scenarios

MES Applications for Smart Manufacturing

MES systems enable real-time production monitoring, optimized scheduling, equipment interconnectivity, and quality traceability to enhance smart manufacturing efficiency and digital control capabilities.



Rec. Models:

LIT-156

LIT-185

LIT-215

Intelligent Inspection

Tablets paired with smart cameras and high-precision AI vision algorithms perform real-time surface defect detection and dimensional accuracy checks, achieving millisecond-quality judgments to significantly improve yield rates for electronic components/automotive parts.



Rec. Model: LTI 101



Rec. Model: LTI 101

Smart Logistics

In automated warehouses, tablets serve as AGV dispatch terminals, integrating UWB high-precision positioning and SLAM navigation algorithms to optimize and track real-time material handling routes.

EIP Series - Expandable Panel PC

Expandable Industrial Panel PC



EIP Series

Product Specification

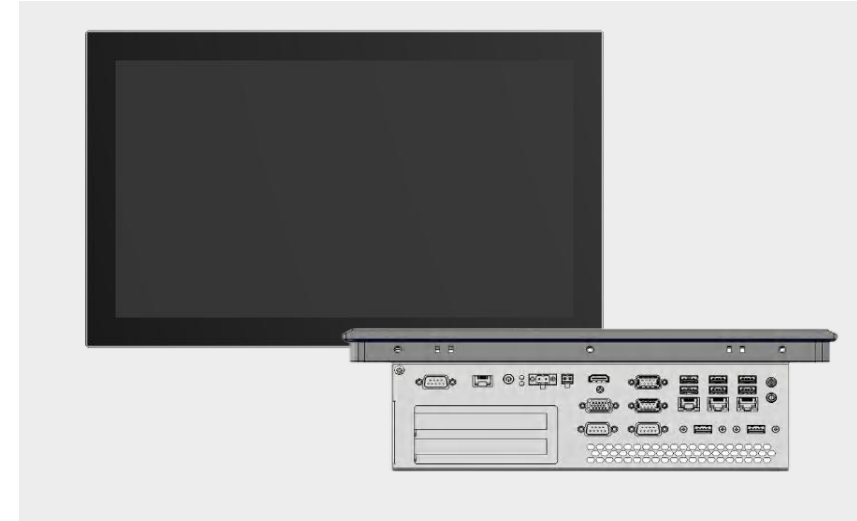
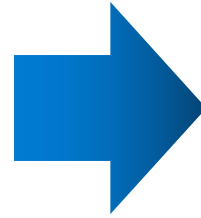


Size (in)	Model	Display info	Specification
15.0	EIP-150	<ul style="list-style-type: none">• 4:3• 350nits• 1024x768	<ul style="list-style-type: none">• Chipset: H110 (Supports 6th/7th/8th/9th Gen CPUs, Max 65W TDP)• Memory: 1× SO-DIMM DDR4-3200 (Max 32GB)• Storage: 1× M.2 2242/2280 Slot• I/O Ports: 1× Optional RS232/422/485, 2× RS232, 4× USB 3.0, 2× USB 2.0• Display Outputs: 1× VGA, 1× HDMI• Expansion Slots: 1× PCIe x16, 1× PCI
15.6	EIP-156	<ul style="list-style-type: none">• 16:9• 300nits• 1920x1080	
17.0	EIP-170	<ul style="list-style-type: none">• 5:4• 250nits• 1280x1024	
18.5	EIP-185	<ul style="list-style-type: none">• 16:9• 250nits• 1920x1080	
21.5	EIP-215	<ul style="list-style-type: none">• 16:9• 250nits• 1920x1080	

EIP Series Product Features



100m Ultra-Long Distance Transmission
Lossless transmission, instantaneous response



Traditional Display + Control Solutions for Large-Scale Automation Equipment

- Distributed Installation: Requires additional remote transmission modules for connectivity
- Long-Distance Signal Challenges: Poor transmission quality and significant interference between main controller and display
- Maintenance Difficulties: Control and display units are too far apart, complicating upkeep

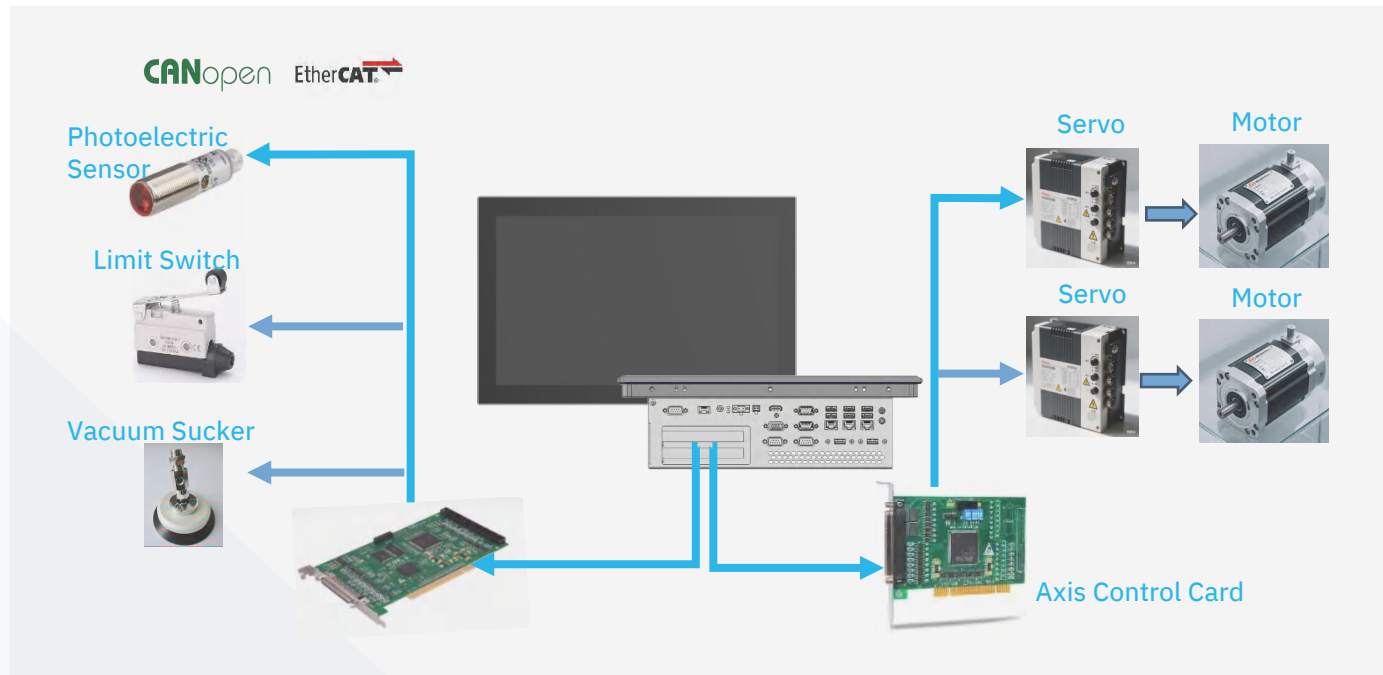
EIP Expandable Panel PC — Integrated Display & Control Solution

- Integrated Installation: Simplified wiring and easier maintenance
- Unified Design: Enhanced protection rating (e.g., IP65)
- Modular Expansion: Quick replacement of motion control cards and I/O cards via integrated expansion slots
- Cost-Efficient: Eliminates need for additional remote transmission hardware, reducing expenses

EIP Series Application Scenarios

In **high-speed packaging lines for food and pharmaceutical industries**, the system achieves flying-cut synchronization (chasing-cut function) and color mark tracking through motion control cards, while managing pneumatic valves, vacuum suckers, and other equipment via I/O cards.

Medical Packaging Line Application - Integrated Display & Control Solution



IOP Series - Operator Panel

Industrial Operator Panel



IOP Series Product Specification



Size (in)	15.0	15.6	17.0	18.5	21.5
Model	IOP-150	IOP-156	IOP-170	IOP-185	IOP-215
Display Info	4:3 350nits 1024x768	16:9 300nits 1920x1080	5:4 250nits 1280x1024	16:9 250nits 1920x1080	16:9 50nits 1920x1080
Motherboard	H110 6/7/8/9 65W; 4xUSB3.0, 4xLAN, 1xHDMI, 1xDP, 2xRS232/422/485 bios switching				
	Alder lake 12th Core-U; 4xUSB3.0, 4xLAN, 1xHDMI, 1xDP, 2xRS232/422/485 bios switching				
Display Driver Board	With Remote Display Driver Board				

IOP Series

Product Feature



Shell Design

- Aluminum alloy die-cast housing: Pressure-resistant and corrosion-proof
- Anodized finish: Premium tactile experience
- Angled edges/minimal screws: Prevents liquid retention

Protection Ratings

- ESD Level 3 + EFT Level 4 protection
- Surge-protected Ethernet ports
- IP65 front panel: Splash/oil resistant
- DC 9-36V input: Reverse-polarity/overcurrent protection

Mounting Options

- Upper/lower arm-mount compatibility
- Optional button module
- Optional keyboard module

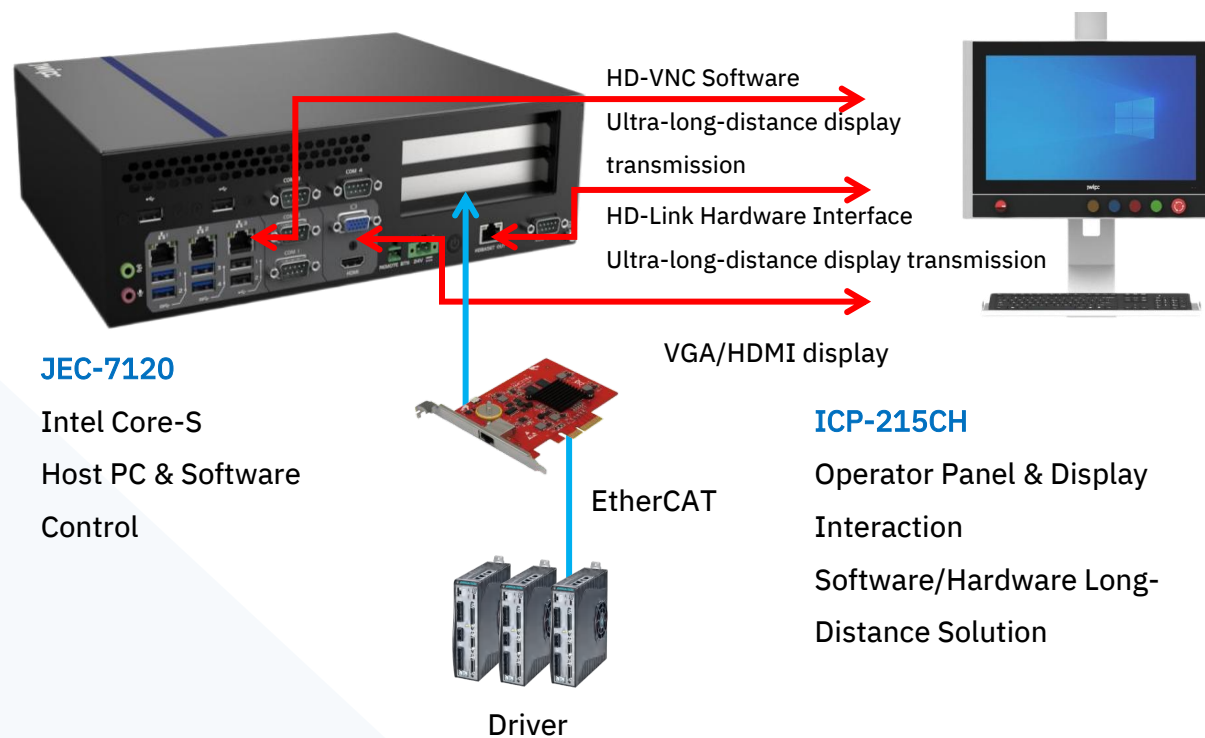
Platform & Features

- Intel Core/Atom platform architecture
- Standalone display (70m remote transmission module optional)
- Software-based remote transmission support

IOP Series

Application Scenarios

Pharmaceutical Equipment Production Applications



ARMT Series - ARM Industrial Panel PCs

*Advanced **R**ISC **M**achine **T**erminal*



ARM Series

Product Specification



Size (in)	Model	Display Info	Configuration
10.1	ARMT-101	<ul style="list-style-type: none">• 16:10• 350nits• 1280x800	<ul style="list-style-type: none">• CPU: RK3568/3576/3588• 4xUSB3.0, 2xLAN• 1xHDMI• 5× RS232 (2× COM support RS232/485, 3× configurable)• 12V DC IN (Optional 12V–36V wide voltage input)
15.0	ARMT-150	<ul style="list-style-type: none">• 4:3• 300nits• 1024x768	
15.6	ARMT-156	<ul style="list-style-type: none">• 16:9• 300nits• 1920x1080	
18.5	ARMT-185	<ul style="list-style-type: none">• 16:9• 250nits• 1920x1080	
21.5	ARMT-215	<ul style="list-style-type: none">• 16:9• 250nits• 1920x1080	

ARM Series Product Features



✓ National Class 3+ EMC Standards

✓ Stable & Reliable Anti-Interference Performance

ESD Level 3 Protection / EFT Level 4 Protection / Ethernet Surge Protection

✓ Industrial-Grade Design to withstand harsh environments

Operating Temperature Options: 0°C~50°C / -20°C~60°C / -40°C~70°C

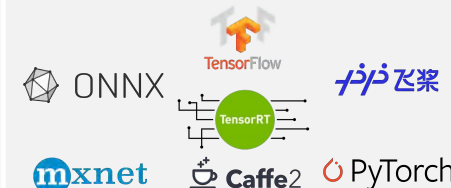
✓ Dedicated ARM Board-Level Technical Support System

Full-stack technical support – from motherboard SDK to application-layer integration



- Dual Gigabit Ethernet ports, dual CAN bus
- Multiple high-speed USB interfaces
- 6x serial ports (RS232/485 selectable)
- Wireless expansion: WiFi/BT/4G

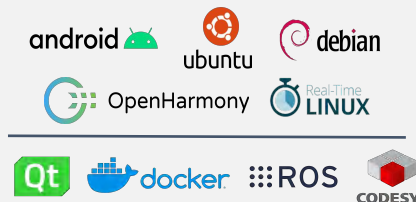
JWIPC ARM Motherboard – Universal I/O Design
Rapid upgrade support for mainstream SoCs (NXP, Rockchip)



Mature AI Toolchain
Hardware-Accelerated AI Scheduling
AI Model Adaptation Framework
Operator Completion Strategy



Compatible with Industrial/Commercial-Grade Components | Electable Operating Temperature Ranges
0°C~60°C / -20°C~70°C / -40°C~85°C



Multi-OS Compatibility
Comprehensive Development Support
Free technical guidance

Applications & Functions

Application Software Adaptation

Security Daemon/Special Application Features

Application Demo Program Demonstration

Software Toolkit

AI Model Adaptation & Operator Completion

Software Design & Development

File System

File System Adaptation & Optimization

Related Program Porting

System API Interface Provision

Development Environment Setup

QT Support

System Log Analysis

Boot/Kernel

Bootloader (U-Boot)

Driver Porting

Kernel Rules

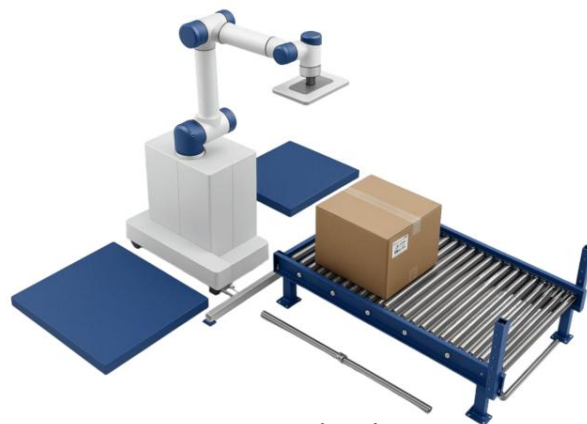
Kernel Optimization

Patch Updates

ARM Series Application Scenarios



Industrial Robot Intelligent Control Tablet Applications



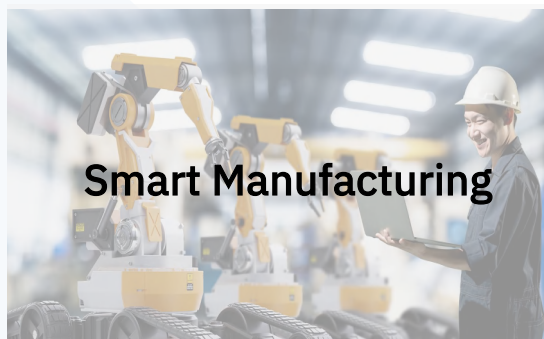
Process Parameterization

Configure and switch process parameters via tablet for rapid production adjustments



Simplified Interaction

Tablet interface reduces learning curve and maintenance cost for service provider



TDS Series - Industrial Touch Monitor

*Industrial **T**ouch **D**isplay **S**ystem*



TDS Series

Product Specification



Size (in)	Model	Remote Transmission Models	Specifications
10.1	N/A	TDS-P101	16:10 Aspect Ratio, 1280×800, 350nits, Capacitive/Resistive Touch Optional, HDMI/VGA/DVI-D, 9-36V Input
10.4	N/A	TDS-P104	4:3 Aspect Ratio, 1024×768, 350nits, Capacitive/Resistive Touch Optional, HDMI/VGA/DVI-D, 9-36V Input
12.1	TDS-121	TDS-P121	4:3 Aspect Ratio, 1024×768, 500nits, Capacitive/Resistive Touch Optional, HDMI/VGA/DVI-D, 9-36V Input
15.0	TDS-150	TDS-P150	4:3 Aspect Ratio, 1024×768, 350nits, Capacitive/Resistive Touch Optional, HDMI/VGA/DVI-D, 9-36V Input
15.6	TDS-156	TDS-P156	16:9 Aspect Ratio, 1920×1080, 300nits, Capacitive Touch, HDMI/VGA/DVI-D, 9-36V Input
17.0	TDS-170	TDS-P170	5:4 Aspect Ratio, 1280×1024, 350nits, Capacitive/Resistive Touch Optional, HDMI/VGA/DVI-D, 9-36V Input
18.5	TDS-185	TDS-P185	16:9 Aspect Ratio, 1920×1080, 250nits, Capacitive/Resistive Touch Optional, HDMI/VGA/DVI-D, 9-36V Input
21.5	TDS-215	TDS-P215	16:9 Aspect Ratio, 1920×1080, 250nits, Capacitive/Resistive Touch Optional, HDMI/VGA/DVI-D, 9-36V Input

TDS Series

Product Features

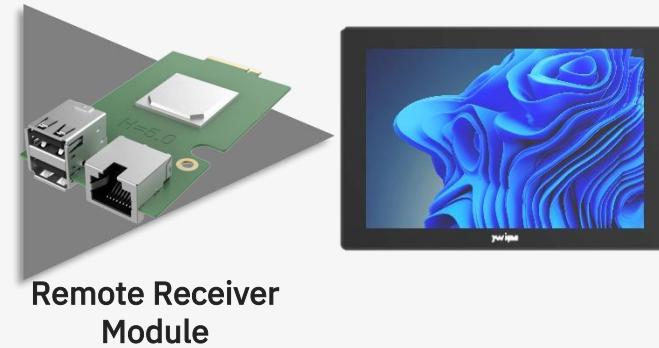


TDS-XX Series (12.1"~21.5")



- **Modular design compatible with OVS modular systems**
- DC 12-36V wide voltage input with surge/reverse connection protection
- Triple display inputs: HDMI/VGA/DVI
- Optional capacitive/resistive touchscreen (AG/AF coating)
- ESD Level 3 + EFT Level 4 protection

TDS-PXX series (10.1"~21.5")



- **Optional remote transmission functionality;**
- Lossless 1080P over single CATx cable (70m range)
- Industrial-grade decoding chip for secure operation
- Triple display inputs: HDMI/VGA/DVI
- Optional capacitive touchscreen
- Exceptional cost-performance ratio

A photograph of an industrial robotic arm in a factory setting, with a control panel featuring a large monitor displaying various data and graphs. The image is overlaid with a blue gradient and binary code patterns.

PART 03

Business Cooperation



Core Advantages

Industrial-Grade Quality Assurance



Anti-Interference & Durability

- ✓ Vibration/Shock Resistance: Rigorously tested to operate reliably near high-vibration machinery, minimizes failures caused by mechanical shocks
- ✓ Premium Components & Robust Housing: MTBF 50,000 hours, reduces maintenance costs and replacement frequency



High Protection Standards

- ✓ IP65-Rated Industrial Panel PCs: effectively blocks dust and water splashes, ensures stable performance in harsh environments (e.g., dusty workshops/humid warehouses)
- ✓ Wide-Temperature & Voltage Tolerance: -20°C to 70°C operating range, 9-36V DC input for diverse industrial scenarios

Reliability & Certifications

- ✓ International Compliance: CE, FCC, and other global industrial certifications, meets worldwide safety/performance requirements
- ✓ Rigorous Quality Control: full-process inspections from raw materials to finished products, guaranteed reliability for customer trust

Core Advantages

Omni-Channel Support System



Joint Marketing Support



- We work closely with partners to develop co-marketing strategies that include both online and offline promotions, as well as participation in industry trade shows. This collaboration enhances brand visibility and market influence for all parties involved. Our support extends to providing high-quality marketing materials such as brochures, case studies, and promotional videos to help partners effectively expand their market reach.

Technical Solution Support



- Our expert technical team designs customized industrial tablet solutions tailored to each client's specific project needs covering hardware selection, software integration, and complete system architecture. Additionally, we offer comprehensive training programs covering equipment operation, maintenance procedures, and troubleshooting techniques to ensure clients can fully utilize and manage their systems.



Supply Chain Support



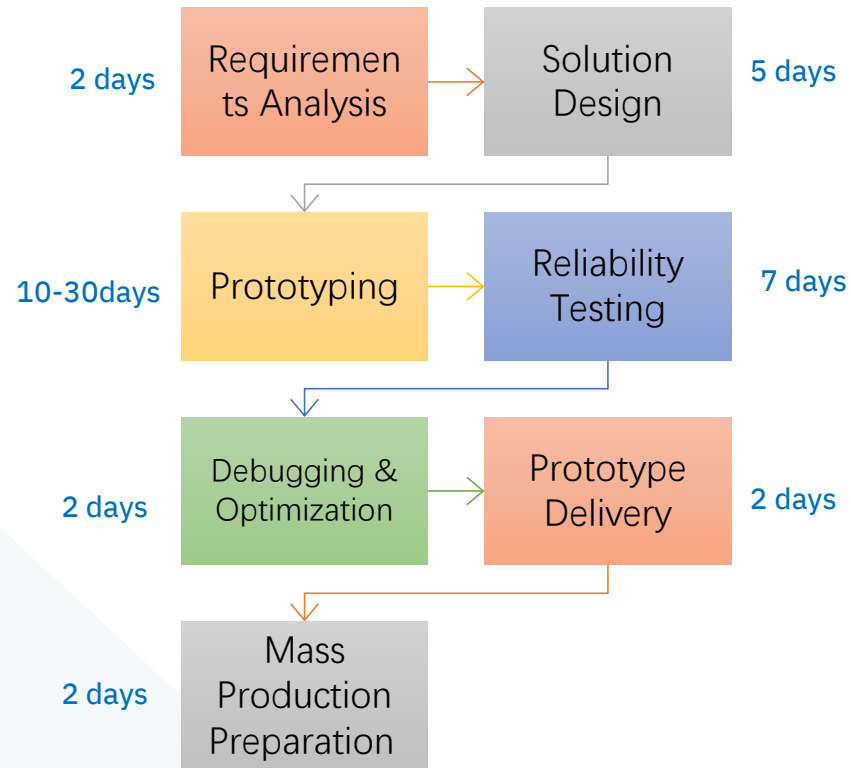
- We maintain a stable and reliable global supply chain network through partnerships with top-tier suppliers. This ensures consistent material availability and on-time product delivery. Our inventory management services include demand forecasting and strategic stock planning, which helps clients optimize their inventory levels while minimizing capital investment and storage costs.



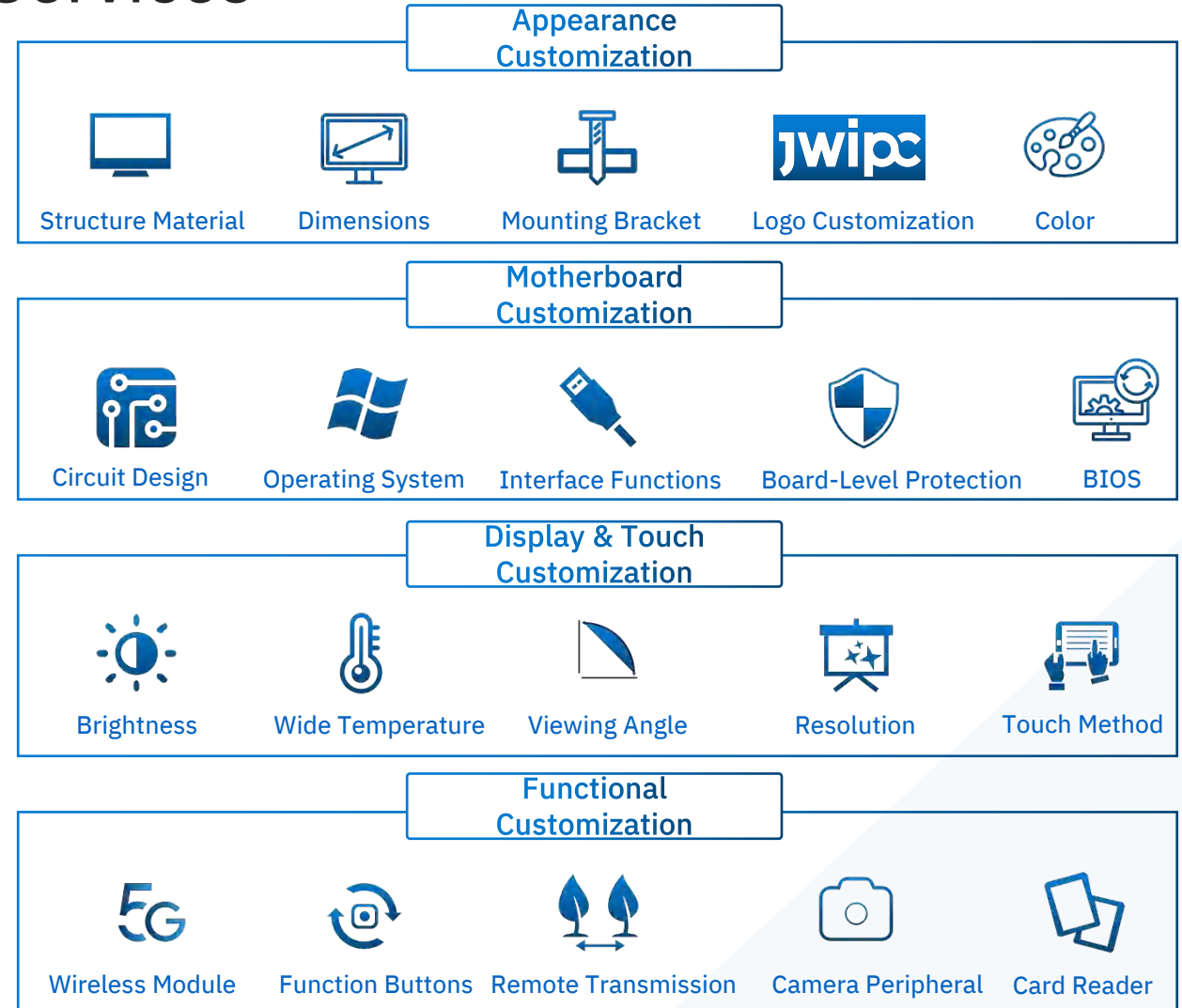


Core Advantages

End-to-End Customization Services



Prototype delivery time frame varies from 10 to 60 days depending on customization requirements.





Being Smart,
Being Intelligent

www.jwipic.com

