



CE TECHNICAL SPECIFICATIONS AND COMPLIANCE: CE marking: Compliant with EN 14783:2014 Material: AISI 304 / AISI 316 stainless steel - Thickness: 0.8 mm (tolerances according to EN 502) - Reaction to fire: Class A1 (Non-combustible) Permeability: Impermeable (water, air and vapor) - Sustainability: 100% recyclable

Stainless steel

Ansi 304 or 316

4 Finishes

Mirror-Brushed Ground-Textured

Supply

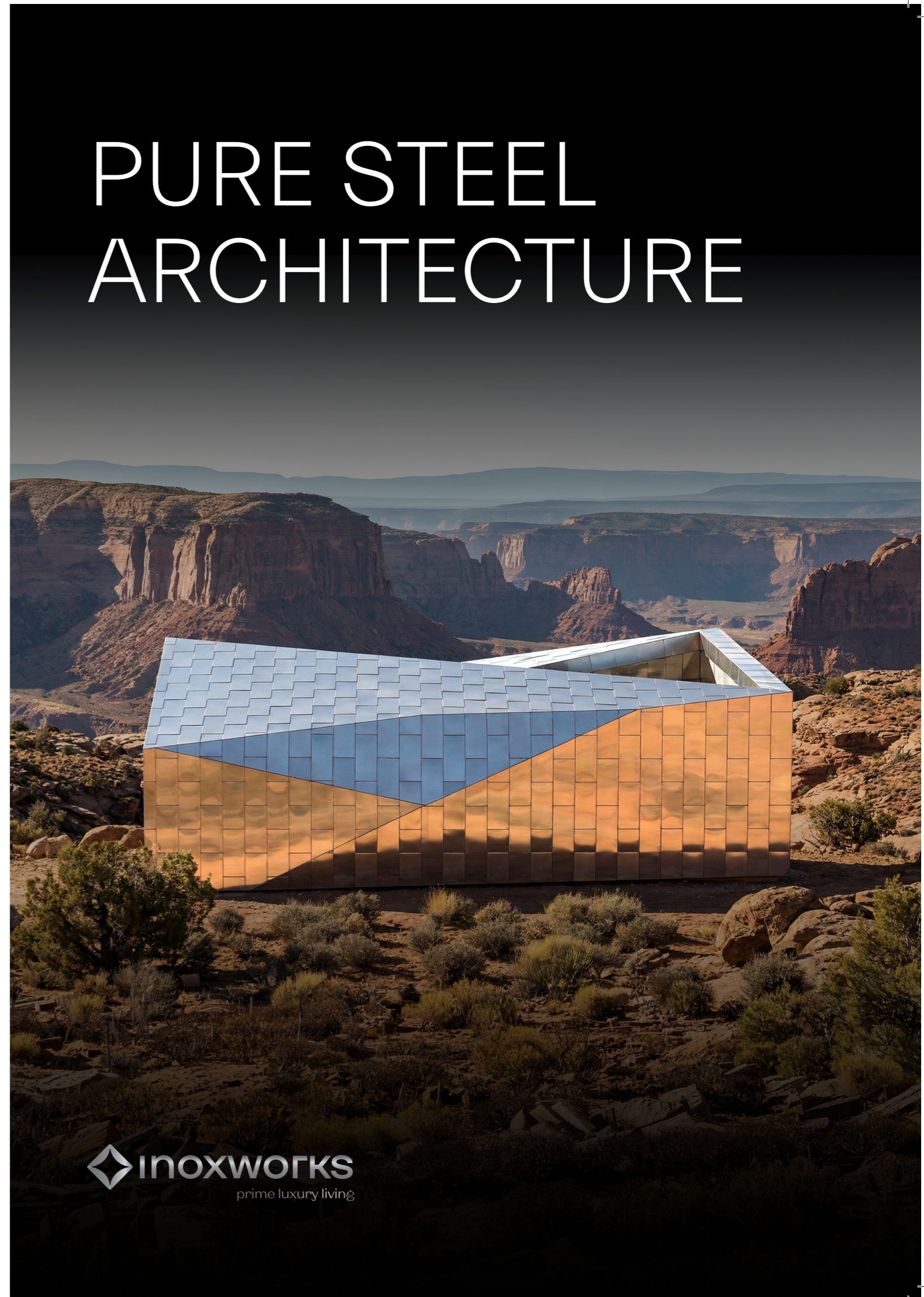
Buyers assembly or full service

Zona Industrial do Rossio, N0140
3730-601 Vale de Cambra
PORTUGAL

luis.lima@inoxworks.pt

inoxworks.pt

PURE STEEL ARCHITECTURE



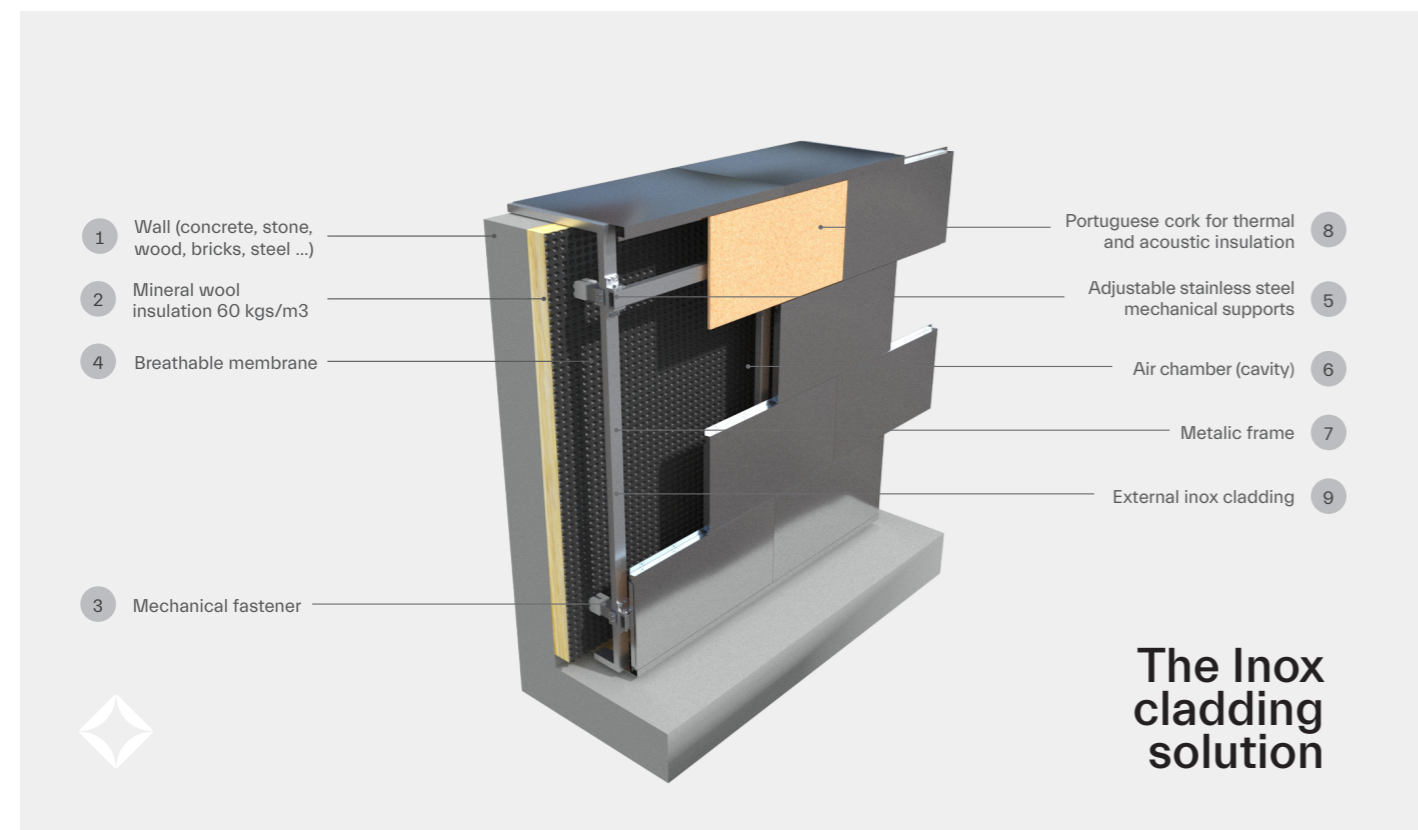
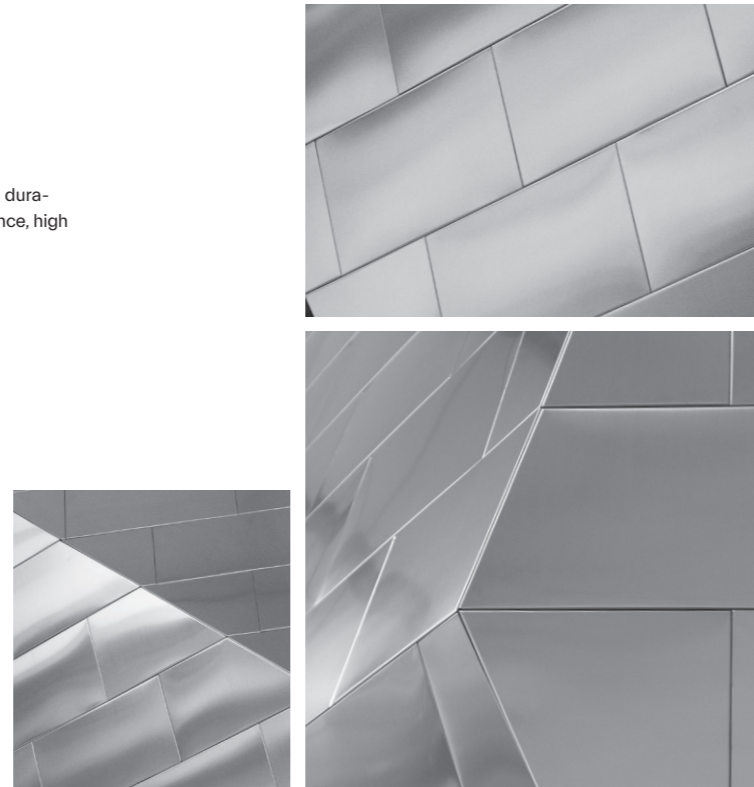
We are a forward-thinking manufacturer dedicated to creating innovative stainless steel solutions that combine modern design, durability, and sustainability.

Product advantages:

- Very attractive and modern image.
- Stainless Steel, Inox, 100% sustainable and recyclable.
- No maintenance needs.
- Almost indestructible.
- Inherent advantages of stainless steel: absence of corrosion (infinite lifespan), durability, aesthetic appearance, hygiene and cleanliness, sustainability, fire resistance, high thermal performance, low maintenance.
- Antibacterial environment.
- Application on unfinished walls (irregular concrete, stone, wood, brick, etc.)
- Easy application and easy replacement.
- Easy transportation.
- Modularity.
- Modern future trend.

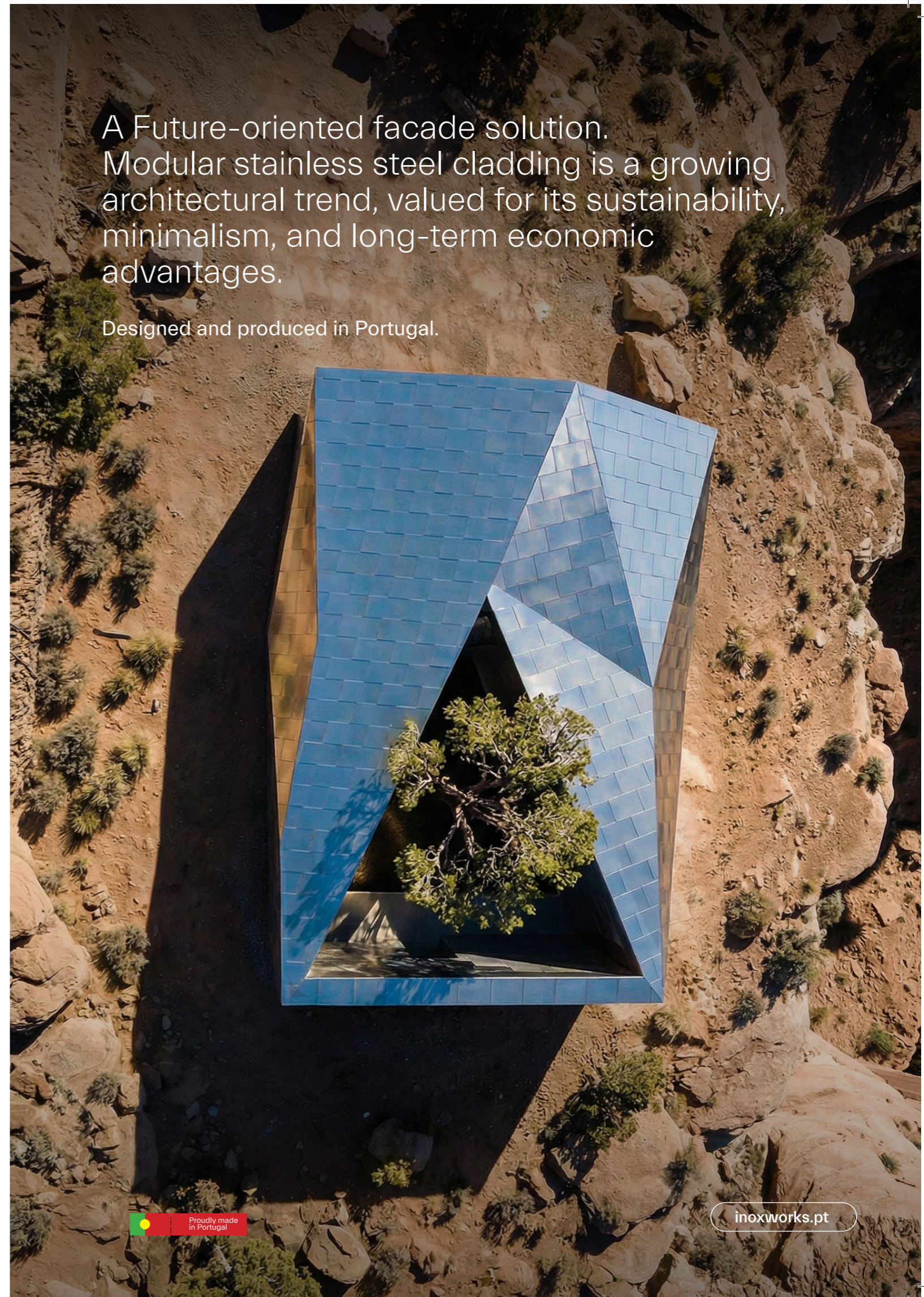
Product presentation:

- In our standard panels dimensions 600 x 300mm, 600x600mm or 300x300mm or others defined by discerning clients in ANSI 304 or 316.
- 4 finish options; mirror, brushed, ground, engraved/textured.
- Supply in individual set of panels.
- Buyer assembly or full-service solution, with strong isolation, by our team.



A Future-oriented facade solution. Modular stainless steel cladding is a growing architectural trend, valued for its sustainability, minimalism, and long-term economic advantages.

Designed and produced in Portugal.



Proudly made in Portugal

inoxworks.pt