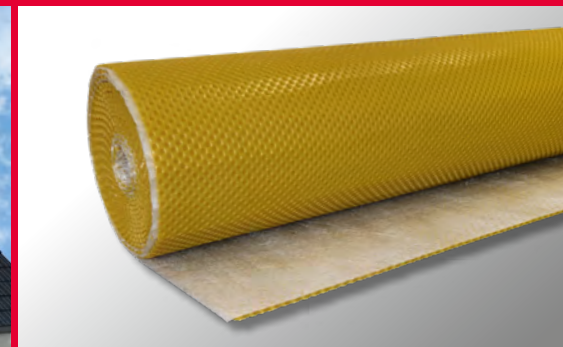




BREAKTHROUGH FLEXIBILITY



# PROGRAM OVERVIEW

Innovative products for house construction: Dimpled and drainage membranes, green roof products, monofilament composites, DPC membranes, pitched roof and sarking membranes as well as an extensive range of accessories.



Individual  
**PRINT LABEL  
SERVICE**  
Individual  
widths and  
lengths.

# THE MOST FLEXIBLE DIMPLE AND DRAINAGE MEMBRANE SPECIALIST FAR AND WIDE!

PMI - everything has been thought of, from the basement to the roof.

With our 50 employees, we may not be the biggest - but we are certainly among the strongest when it comes to finding the best solution for your needs in new builds and renovations. At PMI-Plast, you get innovative, high-performance products from a single source, which are sustainable and of certified quality.

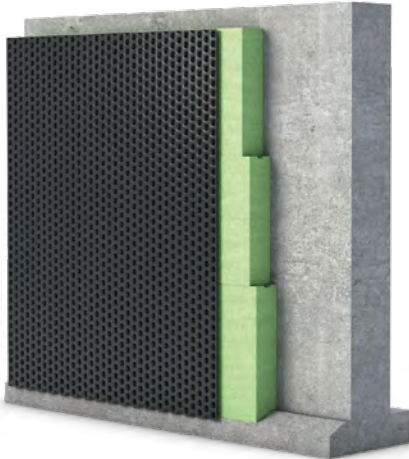
Fast, reliable and always exceptionally flexible, because every construction project has its own unique challenges.

Simply expect a little more and discover the astonishing variety of the PMI range now - from dimpled and drainage membranes to DPC membranes and construction sheeting, right through to complete solutions for pitched roofs.

Do you have any questions or specific requirements? We're happy to advise you and are always here for you.

# PMI dimpled membranes, single-ply

# Installation



Dimpled membranes are high-quality problem solvers for protecting foundation walls and for the sub-base course. They are used as fill protection on the basement wall, where they are installed on a sufficiently pressure-stable substrate such as XPS perimeter insulation. Here they represent a cost-effective alternative to conventional sub-base courses, made of lean concrete.

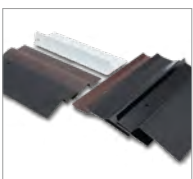


## Our products:

- PM XS 320
- PM 8N 150
- PM 8N 200
- PM STANDARD GS 250
- PM 20 160

Product name	Dimple height in mm	Compressive strength in kN/m <sup>2</sup>	Water drainage capacity in l/(s-m), i=1.00	Dimensions in m/roll
PM XS 320	4	approx. 320	approx. 0,6	0,5 - 2,5 x 20
PM 8N 150	8	approx. 150	approx. 2,3	0,5 - 3,0 x 20
PM 8N 200	8	approx. 200	approx. 2,4	0,5 - 3,0 x 20
PM STANDARD GS 250	8	approx. 250	approx. 2,6	0,5 - 3,0 x 20
PM 20 160	20	approx. 160	approx. 8,5	0,5 - 2,0 x 20

## Accessories:



PM EDGE PROFILE



PM MOUNTING KNOBS with steel nails



PM MOUNTING SCREW



PM POWER FIX



PM BUTYL ADHESIVE TAPE

## Vertical:

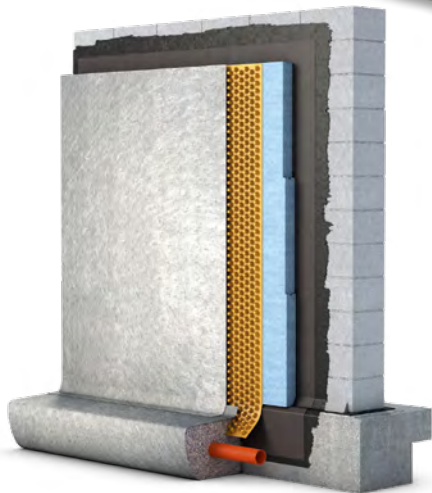
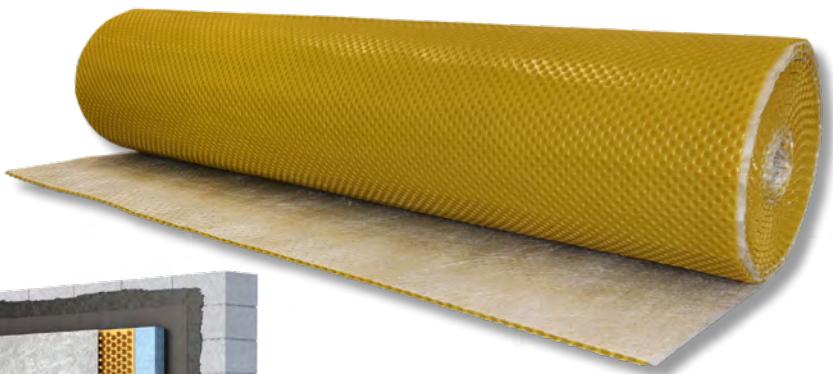


## Horizontal:

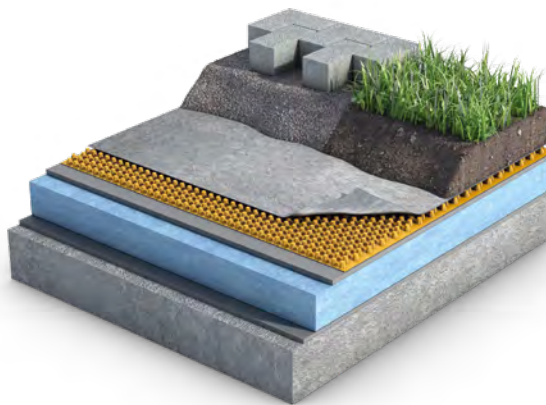


# PMI drainage sheets in two layers

# Installation



Two-layer drainage membranes are recommended for horizontal and vertical surface drainage as a high-quality and effective protection and drainage system. They are used for vertical exterior basement walls, retaining walls, girder pile walls, and bridge abutments. Installed horizontally, they safely protect underground garage ceilings that are covered with soil, utility areas that can be walked on and driven over, as well as terraces and greened flat roofs from waterlogging.

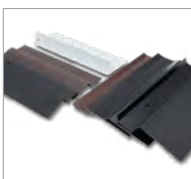


## Our products:

- PM XS2-GEOTEX 320
- PM 2SW-GEOTEX 170
- PM 2SG-GEOTEX 200
- PM DRAIN-TEC 250
- PM DRAIN-TEC 250 ECO<sup>nopp</sup>®\*
- PM DRAIN-TEC 400
- PM DRAIN-TEC 400 ECO<sup>nopp</sup>®\*
- PM TERRA-TEC 500
- PM 20-GEOTEX 160

Product name	Dimple height in mm	Compressive strength in kN/m <sup>2</sup>	Water drainage capacity in l/(s-m), i=1.00	Dimensions in m/roll
PM XS2-GEOTEX 320	4	approx. 320	approx. 0,6	0,5 - 2,5 x 15
PM 2SW-GEOTEX 170	8	approx. 170	approx. 2,2	0,5 - 2,5 x 15
PM 2SG-GEOTEX 200	8	approx. 200	approx. 2,4	0,5 - 2,5 x 15
PM DRAIN-TEC 250	8	approx. 250	approx. 2,6	0,5 - 2,5 x 15
PM DRAIN-TEC 250 ECO <sup>nopp</sup> ®*	8	approx. 250	approx. 2,6	0,5 - 2,5 x 15
PM DRAIN-TEC 400	8	approx. 400	approx. 2,6	0,5 - 2,5 x 15
PM DRAIN-TEC 400 ECO <sup>nopp</sup> ®*	8	approx. 400	approx. 2,6	0,5 - 2,5 x 15
PM TERRA-TEC 500	11	approx. 500	approx. 3,1	0,5 - 2,5 x 15
PM 20-GEOTEX 160	20	approx. 160	approx. 8,5	0,5 - 2,0 x 10

## Accessories:



PM EDGE PROFILE



PM MOUNTING KNOBS with steel nails



PM MOUNTING SCREW

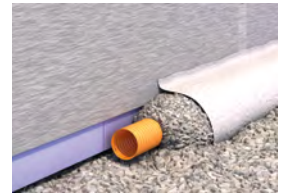
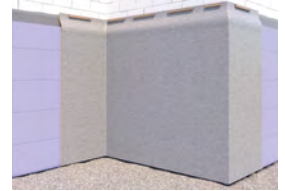
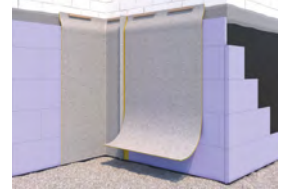


PM POWER FIX



PM BUTYL ADHESIVE TAPE

## Vertical:

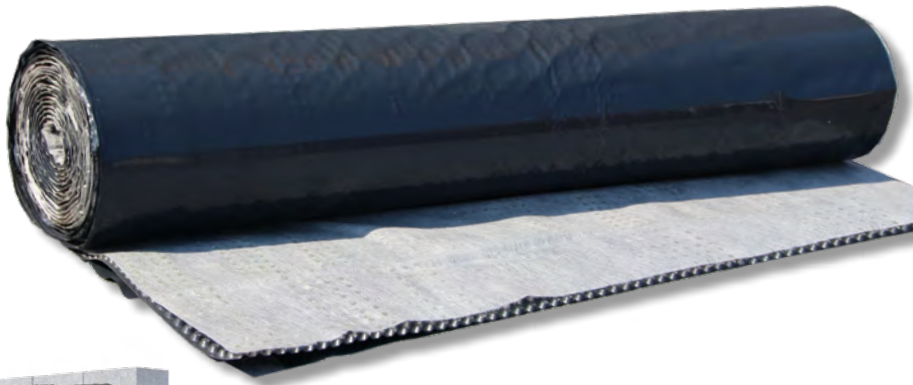


## Horizontal:



# PMI drainage sheets in three layers

# Installation



Three-layer drainage membranes are a high-quality addition, and are used as an effective protection and drainage system for polymer-modified bitumen thick coatings on exterior basement walls. They provide reliable protection against waterlogging and also have a sliding film on their reverse side. The settling filling soil can slide on it; this also protects the bitumen thick coating.

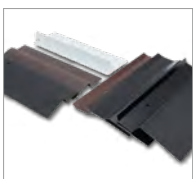


## Our products:

- PM XS3-GEOTEX 320
- PM 3SW-GEOTEX 170
- PM 3SG-GEOTEX 200
- PM GEO-TEC 250
- PM GEO-TEC 250 ECO<sup>nopp</sup>\*
- PM GEO-TEC 400
- PM GEO-TEC 400 ECO<sup>nopp</sup>\*

Product name	Dimple height in mm	Compressive strength in kN/m <sup>2</sup>	Water drainage capacity in l/(s-m), i=1.00	Dimensions in m/roll
PM XS3-GEOTEX 320	4	approx. 320	approx. 0,6	0,5 - 2,5 x 15
PM 3SW-GEOTEX 170	8	approx. 170	approx. 2,4	0,5 - 2,5 x 15
PM 3SG-GEOTEX 200	8	approx. 200	approx. 2,4	0,5 - 2,5 x 15
PM GEO-TEC 250	8	approx. 250	approx. 2,6	0,5 - 2,5 x 15
PM GEO-TEC 250 ECO <sup>nopp</sup> * <td>8</td> <td>approx. 250</td> <td>approx. 2,6</td> <td>0,5 - 2,5 x 15</td>	8	approx. 250	approx. 2,6	0,5 - 2,5 x 15
PM GEO-TEC 400	8	approx. 400	approx. 2,6	0,5 - 2,5 x 15
PM GEO-TEC 400 ECO <sup>nopp</sup> * <td>8</td> <td>approx. 400</td> <td>approx. 2,6</td> <td>0,5 - 2,5 x 15</td>	8	approx. 400	approx. 2,6	0,5 - 2,5 x 15

## Accessories:



PM EDGE PROFILE



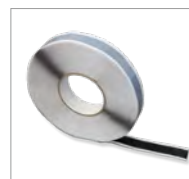
PM MOUNTING KNOBS with steel nails



PM MOUNTING SCREW

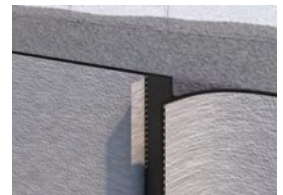
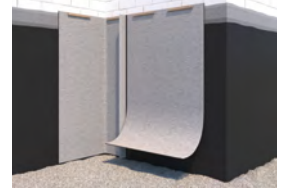


PM POWER FIX



PM BUTYL ADHESIVE TAPE

## Vertical:



# PMI green roof drainage membranes

# Installation



Single and double-layer water-storing drainage membranes are the ideal solution for extensive and intensive green roofs. They offer an excellent water storage capacity and take on the function of a protective, filtering, seepage and water storage layer in the green roof. In addition, they reliably protect greened flat roofs from waterlogging.



## Our products:

- PM P-STANDARD GS 200
- PM P-STANDARD GS-GEOTEX 200
- PM P-20 150
- PM P-20-GEOTEX 150
- PM P-25 150
- PM P-25-GEOTEX 150
- PM P-40 200
- PM P-60 200

Product name	Dimple height in mm	Compressive strength in kN/m <sup>2</sup>	Water storage capacity in l/m <sup>2</sup>	Dimensions in m/roll
PM P-STANDARD GS 200	8	approx. 200	approx. 3,0	1,94 x 20
PM P-STANDARD GS-GEOTEX 200	8	approx. 200	approx. 3,0	1,94 x 15
PM P-20 150	20	approx. 150	approx. 6,0	0,5 - 2,0 x 20
PM P-20-GEOTEX 150	20	approx. 150	approx. 6,0	0,5 - 2,0 x 10
PM P-25 150	25	approx. 150	approx. 11,0	0,5 - 2,0 x 15
PM P-25-GEOTEX 150	25	approx. 150	approx. 11,0	0,5 - 2,0 x 10
PM P-40 200	40	approx. 200	approx. 15,0	1,0 x 2,0
PM P-60 200	60	approx. 200	approx. 20,0	1,0 x 2,0

## Horizontal:



## Accessories:



PM EDGE PROFILE



PM MOUNTING KNOBS with steel nails



PM MOUNTING SCREW



PM POWER FIX



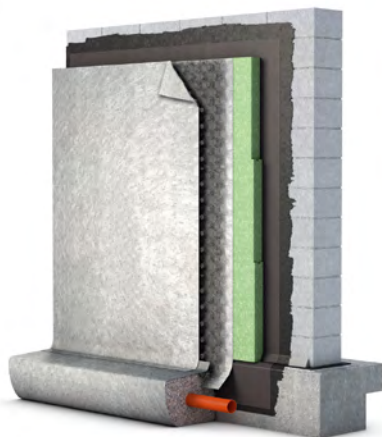
PM BUTYL ADHESIVE TAPE



PM GEOTEX 120

# PMI three-dimensional composites

# Installation



Three-layer monofilament composites are high-quality protection and drainage systems with exceptionally high drainage capacity. The drainage core consists of robust polypropylene monofilaments with a high void ratio and is combined on both sides with a geotextile acting as a filter.

The monofilaments have a double dimpled shaped structure for a very good drainage capacity; the mats are 2 m wide. As a 'flexible' water-permeable drainage system, the geosynthetic material adapts perfectly to the subsoil. Ideal for foundation and retaining walls, drainage as permanent formwork on diaphragm walls, extensively greened flat roofs and underground car park ceilings. The M20M variant is fitted on the reverse side with a concrete-impermeable polymer-reinforced membrane.

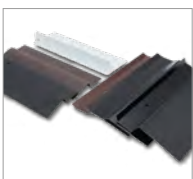


## Our products:

- PM 3D-GEOTEX W8
- PM 3D-GEOTEX M20
- PM 3D-GEOTEX M20M

Product name	Product height in mm	Tensile strength in kN/m	Water drainage capacity in l/(s·m), i=1,00	Dimension in m/roll
PM 3D-GEOTEX W8	8	approx. 18,5	approx. 2,6	2,0 x 35
PM 3D-GEOTEX M20	20	approx. 15,2	approx. 4,3	2,0 x 18
PM 3D-GEOTEX M20M	20	approx. 20,0	approx. 4,8	2,0 x 28

## Accessories:



PM EDGE PROFILE



PM MOUNTING KNOBS with steel nails



PM MOUNTING SCREW

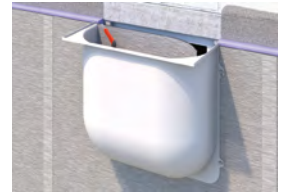
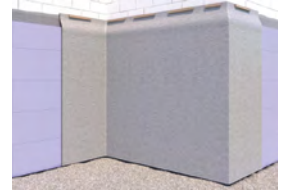


PM POWER FIX



PM BUTYL ADHESIVE TAPE

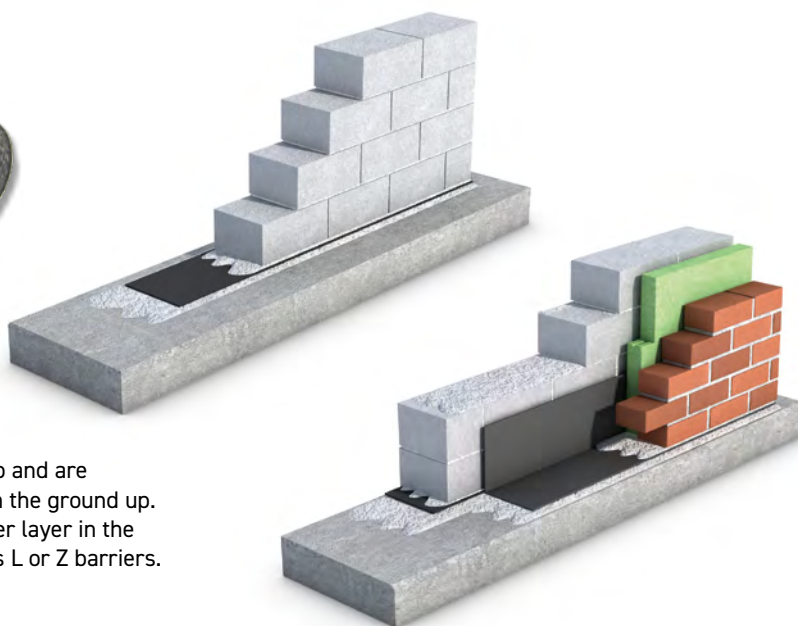
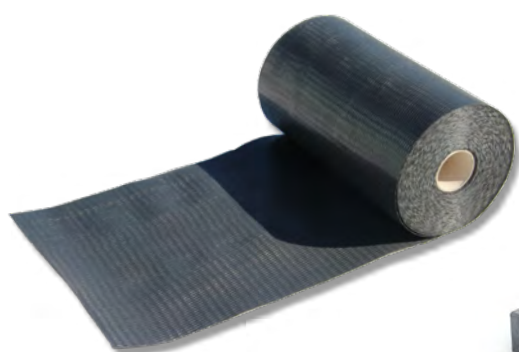
## Vertical:



## Horizontal:



# PMI DPC membranes



DPC membranes provide protection against rising damp and are rot-proof; the masonry remains securely protected from the ground up. The DPC membranes are installed as a horizontal barrier layer in the masonry. In addition, they can be used in cavity walls as L or Z barriers.

## Our products:

- PM LDPE DPC membranes
- PM PVC DPC membranes

Product name	Raw material	Thickness in mm	Dimensions in cm/roll
PM LDPE Damp-proof course	LDPE	approx. 0,35	11,5/17,5/24/30/36,5/50/75/100
PM PVC Damp-proof course	PVC	approx. 1,2	11,5/17,5/24/30/36,5/50/75/100

## Accessories:



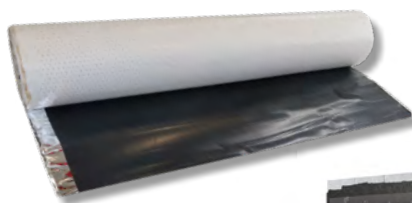
PM  
DPC CORNERS



PM  
POWER FIX

# PMI KSK waterproofing membranes

Cold self-adhesive KSK bitumen membranes are used to seal basement walls and floor slabs in contact with the ground against ground moisture and non-accumulating seepage water.



## Our product:

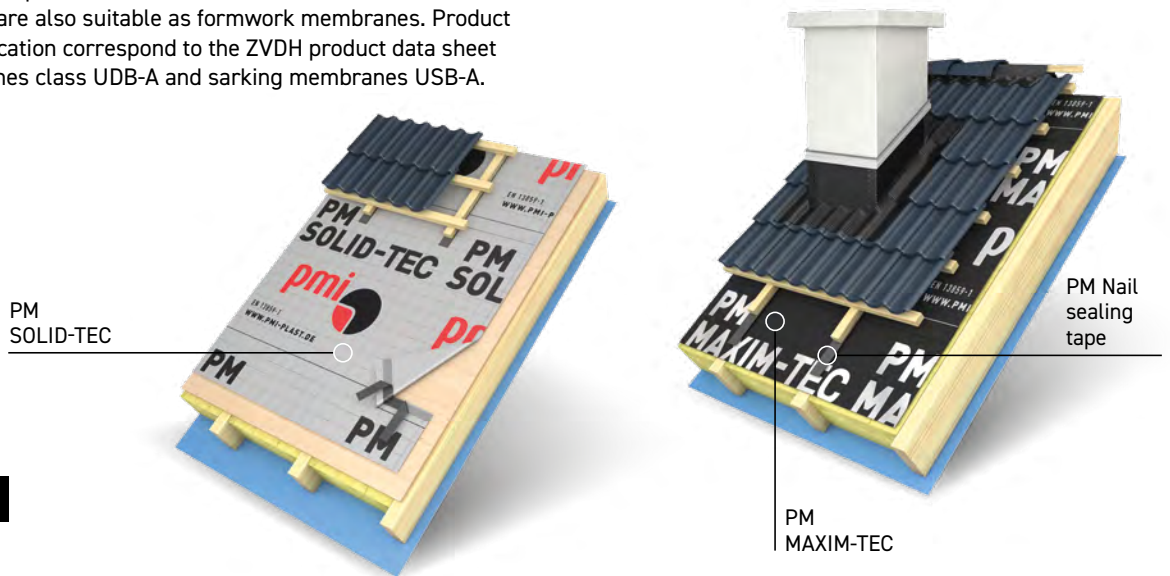
- PM THENE-TEC

Product name	Raw material	Thickness in mm	Dimension in m/roll
PM THENE-TEC	Bitumen rubber as adhesive & sealing layer with cross-laminated HDPE cover film	approx. 1,5	1,0 x 15



# PMI pitched roof sarking membranes

Sarking membranes are used for roof coverings (EN 13859-1) and walls (EN 13859-2), on pitched roofs with ventilated and non-ventilated constructions. They are also suitable as formwork membranes. Product properties and application correspond to the ZVDH product data sheet for sarking membranes class UDB-A and sarking membranes USB-A.



## Our products:

- PM SOLID-TEC
- PM MAXIM-TEC

Product name	Raw material	Tear strength in N/50 mm	Weight in g/m <sup>2</sup>	Dimensions in m/roll
PM SOLID-TEC	Breathable PP non-woven and microporous film	approx. 310/215	150	1,50 x 50
PM MAXIM-TEC	Polyester fleece with polyurethane coating	approx. 420/380	210	1,50 x 50

## Accessories:



PM  
PROFI TAPE



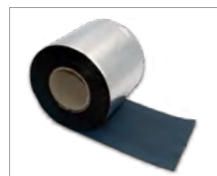
PM  
PROFI TAPE UNI



PM  
POWER FIX



PM  
NAIL SEALING TAPE



PM  
REPAIR TAPE AL



PM  
BUTYL ADHESIVE TAPE

# PM LDPE foils

PM LDPE FOILS offer optimal long-term protection for your products. They are versatile enough for use in many applications and are suitable for both professionals and do-it-yourselfers.



Product name	Raw material	Thickness in mm	Colour	Dimensions in m/roll
PM LDPE foil	LDPE	approx. 0,018 to 0,5	Transparent Translucent Black	2 / 4 / 6 width 25 / 50 length

## About PMI-PLAST GMBH

PMI-Plast GmbH was founded in Duisburg in 1983 and, to this day, has remained a family-run, medium-sized company.

Since 1993, we have been producing dimpled and drainage membranes as well as other plastic products for the construction sector. The high quality of our product range is monitored by renowned testing institutes and the company's own modern testing laboratory. We are happy to adapt our products' properties and design to your individual requirements.



For more information, visit: [www.pmi-plast.de](http://www.pmi-plast.de)

The content of this technical data sheet reflects the current state of knowledge at the time of its creation and makes no claim to be complete. The specifications listed here do not absolve the user from acting on his or her own responsibility. All previous versions of this sheet lose their validity with the publication of this sheet. Errors and typing errors reserved.