



# RIEDEL ENTERPRISE DEFENSE [R.E.D.]

FULLY MANAGED SERVICE

SERVICES AT A GLANCE



# RIEDEL ENTERPRISE DEFENSE [R.E.D.]

[R.E.D.] is a cloud-based IT security solution designed for continuous monitoring, real-time threat detection, and rapid response to IT security incidents. It is a managed service that helps maintain a robust security environment against the evolving threat landscape.



## SIEM & XDR

Detection & Defense

Cloud-based SIEM with centralized log management and XDR for advanced detection and automated response.



## 24/7 SOC

Real-time monitoring

Our SOC monitors, analyzes, and responds to security incidents 24/7, directly from Germany.



## Incident-Management

Incl. reporting

Incident reporting with structured, semi-automated processes for handling, escalation, and documentation of incidents.



## Threat-Intel

From over 30 sources

Continuous updates based on global threat intelligence sources that improve detection accuracy.



## Flexible integration

and scalable

Seamless integration of the customer's existing third-party tools (e.g., antivirus, firewall, IDS, etc.) is possible.



## Archiving

Basis for forensics

Long-term log archiving to meet regulatory requirements and serve as a basis for forensic analysis.

## BENEFITS

### Service- and customer focus

- 24/7 real-time monitoring and incident response by Security Operations Center (SOC) agents
- German-speaking support
- Individual and flexible adaptation to customer-specific processes and infrastructures

### Technological completeness

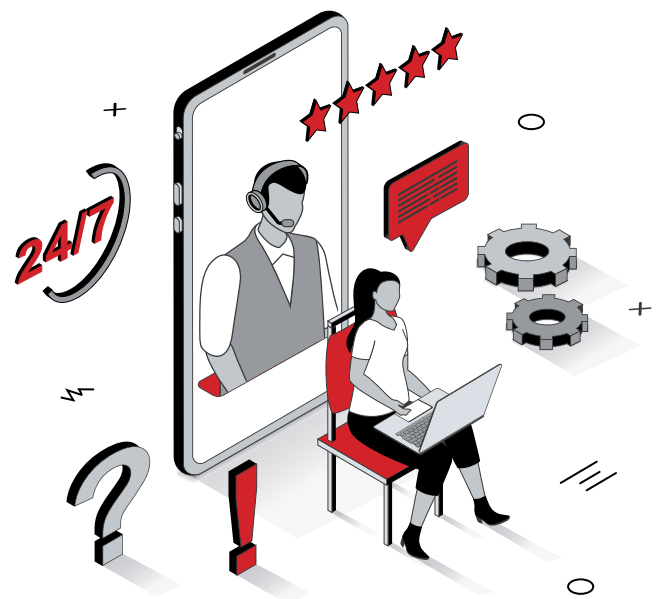
- Full-featured SIEM (including threat intelligence), XDR, and ML-based UEBA (user entity behavioral analysis)
- EDR+ (additional Cisco Secure Endpoint Client available)
- Automation via SOAR available

### Transparency and control

- Customer-centric alerting and response steps
- Creation of customer-specific playbooks and reports
- No black box technology
- Synergy effects with managed network services

### Legal and regulatory compliance

- Fully GDPR, NIS2, and ISO27001 compliant
- Hosting and operation in Germany
- Supports PCI DSS, NIST 800-53, TSC, HIPAA, etc.



### Predictability and cost-effectiveness

- Modular service credit model with a clear cost structure
- No licensing surprises due to confusing bundles

# SERVICE BUNDLES

## WHICH SIZE FITS ME?

Our transparent pricing model is based on the number of your endpoints. For example, the S model includes up to 200 endpoints. For more than 200 endpoints, choose the next most suitable model.

*The advantage? The cloud-based architecture makes the solution scalable and flexible, suitable for organizations of all sizes.*

**S****< 200 Endpoints**€ 9.995,-  
one-time€ 4.950,-\*  
monthly**M****< 500 Endpoints**€ 9.995,-  
one-time€ 7.495,-\*  
monthly**L****< 1.000 Endpoints**€ 14.995,-  
one-time€ 9.995,-\*  
monthly**XL****< 1.500 Endpoints**€ 14.995,-  
one-time€ 13.995,-\*  
monthly

\*Inc. 90 days of retention time (hot) and 12 months of archiving (cold)

**Individual prices apply for networks with over 1,500 endpoints. Please feel free to contact us!**

## [R.E.D.] ONBOARDING



*Our SLAs ensure strong performance, reliability, and immediate response to security incidents.*

### You've chosen [R.E.D.]?

The onboarding process takes 6 to 8 weeks. During this process, existing vulnerabilities are assessed, the service is customized, monitoring tools—such as Log Collector and XDR Agent—are installed, and your network activity is analyzed.

After customer consultation and testing, continuous threat monitoring is activated.

**Vulnerability Assessment****Determination of the Initial Situation****Testing and Validation****Start of Service****Implementation and Adaptation****Operational Approval**

### Any further questions?

We would be happy to talk you through our services during a personal, no-obligation meeting.

✉ [RN-sales@riedel.net](mailto:RN-sales@riedel.net)

☎ 06033 - 9169 100

🌐 [www.riedel-networks.net](http://www.riedel-networks.net)

# Get in touch

## RIEDEL Networks GmbH & Co. KG

✉ [RN-sales@riedel.net](mailto:RN-sales@riedel.net)

☎ 06033 – 9169 100

🌐 [riedel-networks.net](http://riedel-networks.net)



### About RIEDEL Networks

RIEDEL Networks is a privately owned, global network provider focused on bespoke networks. We are listed in the Gartner Magic Quadrant for Network Services, Global, as a niche provider specializing in medium-sized international companies and the media and events sector. With our own global backbone, we help companies stay connected worldwide. Our services include Internet connections, MPLS, SD-WAN, SASE, Cloud Connect, and much more. Our customers come from a variety of industries and value quality, security, and reliability. RIEDEL Networks is a wholly owned subsidiary of the RIEDEL Communications Group in Wuppertal, Germany, and is wholly owned by Thomas Riedel.