



Suzhou TOMY Optronics.,LTD

Display the World.....

www.tomylcd.com

Company profile

SUZHOU TOMY OPTRONICS CO.,LTD

Address: A4015-A4020, Building 1, No. 209, Zhuyuan Road,
High-tech Zone, Suzhou

Registered capital: USD 1 Million

2021 Annual turnover: USD 50 Million

Employees: About 800 (people)

Factory: Dongguan, Guangdong Province

Business content: Design, development, production, sales and service of TN, STN, color STN and TFT-LCM liquid crystal display modules and related electronic products.

Application scope: instrument, medical, office equipment, information, communication, household appliances and automobile etc.

System certification: ISO 9001, ISO 14001, IATF16949 certification, RoHS and REACH certification.

Overview (目錄)



Vision & Mission (願景及使命)

Products & Technology (產品和技術)

Quality Management (品質管理)

Sales & Marketing (業務及銷售網絡)

Strength (優勢)

Milestone

2000 Expansion of TAB/COG/COF Lines; becoming the largest shareholder



1998 Kaohsiung plant completed, ISO9001 certificated, Gaobu plant STN-in-line commenced



1990 Incorporated in Taipei, Taiwan, Wan Jiang Plant established in Dong Guan China , TN production line commenced

1995 ISO9002 Certified

Milestone



2005 The EU Green Product Assurance System RoHS certificated.



2001 Officially change our name to SGD. Acquisition of Solomon LCM division



2006 ISO/TS16949:2002 Certificated



2003 ISO9001:2000 certificated, SONY Green Partner approved (SS-000259); Financial Capital increased to US\$38 Million

Milestone



2012 TFT SIZE 3.5"/ 4.3"/
5.7"/ 7", VA (Cr=800), Color TN



2007 ISO14001 Certificated



2014 Full Size TFT Standard
Products (1.77"~12.1")



2009 Set up TFT module
new production line

Vision & Mission （願景及使命）

Our Vision （我們的願景）

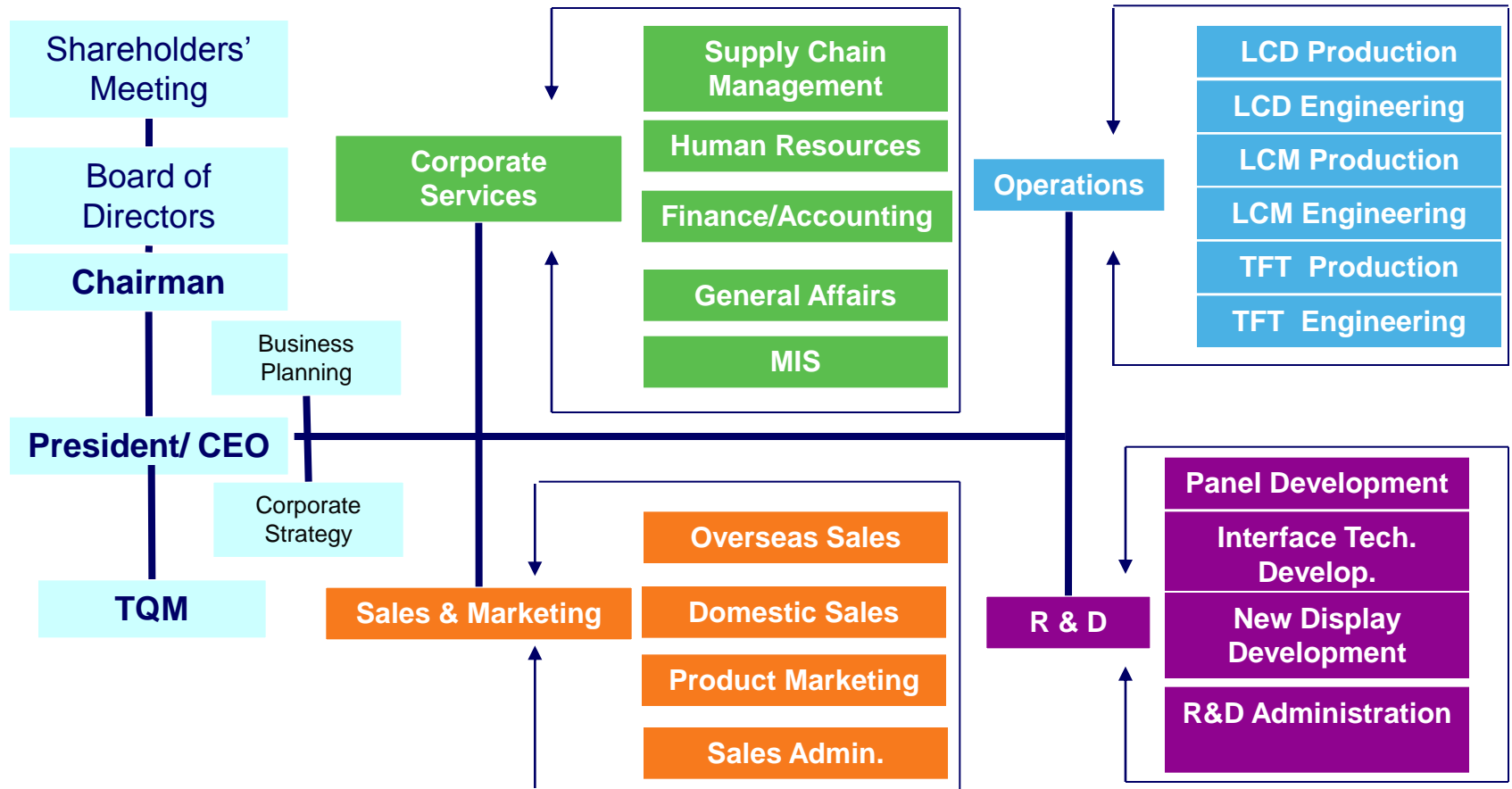
To be a leading global display manufacturer representing the best visual bridge for man/machine interface .(成爲國內中小尺LCD/LCM領導廠商，爲人機介面提供良好橋梁)

Our Mission （我們的使命）

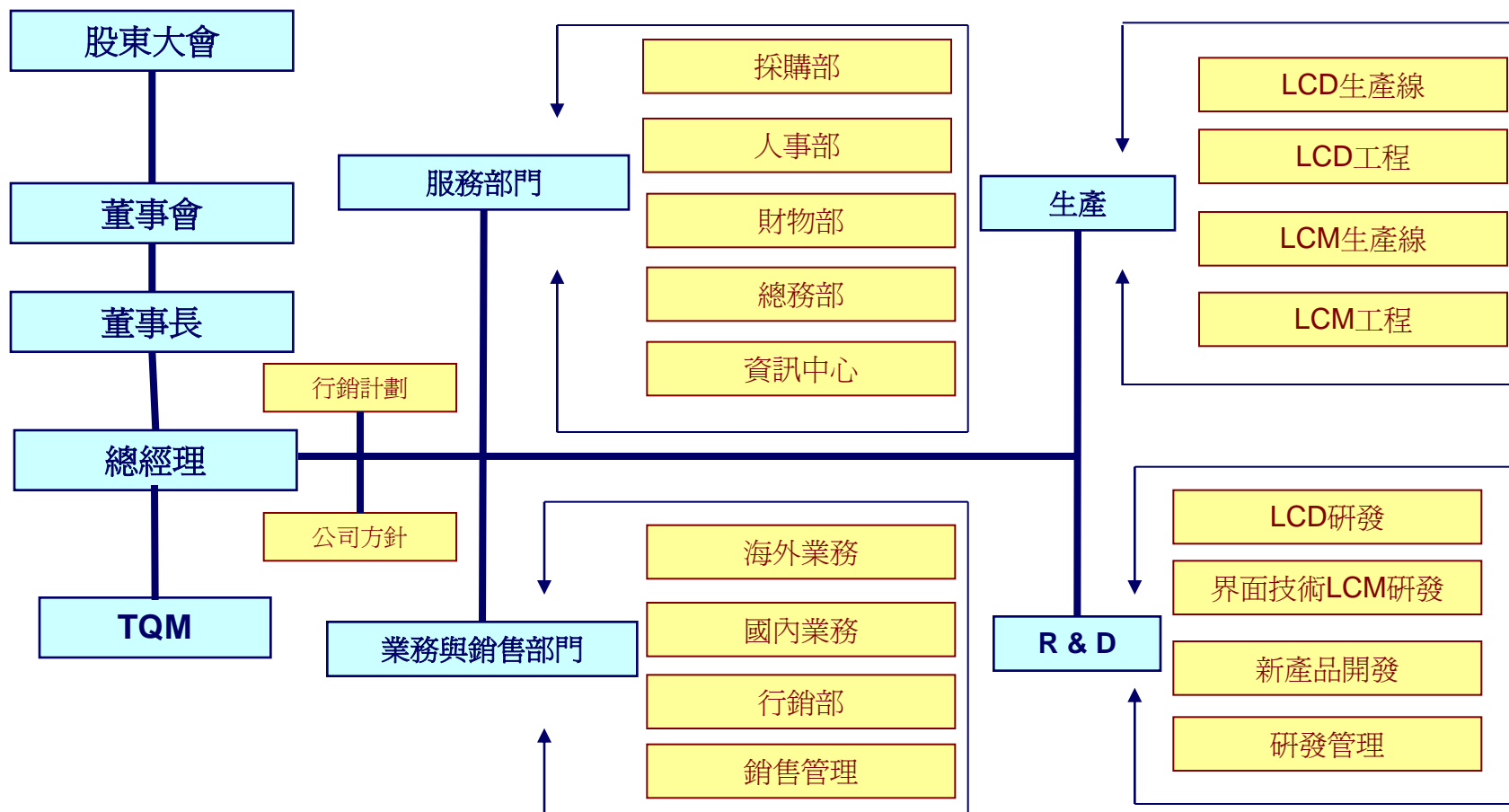
To create a value-added design & manufacturing solution for small-medium sized Flat-Panel Displays through teamwork spirit and a win-win philosophy
（爲客戶提供最優的設計及完全的解決方案，創造利潤，獲得共贏）



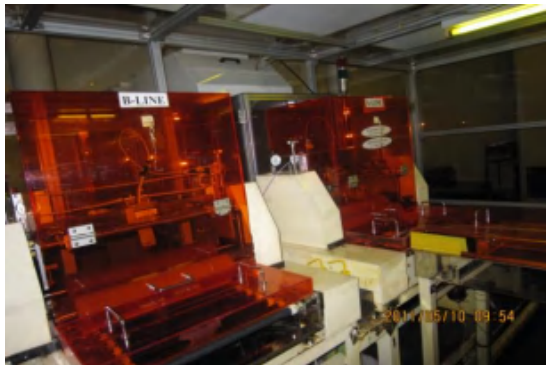
Organization Structure



公司組織架構



Dong Guan Plant



Total Land Space (總面積) : 110,000 M²
(1,184,030 sq. ft.)

Total Structure Space (建築面積) : 40,824 M²
(439,425 sq. ft.)

Production Floor Space (生產面積) : 17,260 M²
(185,786 sq. ft.)

Clean Room Area: (無塵室面積) : 5,000 M²
(43,809 sq. ft.)

- LCD Panel, LCD Module lines provide flexible solutions to meet your needs
提供符合客戶要求的LCD ,LCM
 - In 1998 , STN / LCM started production First
 - foreign invested full fledged LCD manufacturer in Mainland China
- 早在1998年， 增資投入了當時國內最先進STN LCD自動線，開始了STNLCD/LCM 的批量生產。
- 1st FL: LCM production line (COB,COG, TFT)
 - 1F: LCM 產線
 - 2nd FL: LCD production Line 1
 - 2F:LCD 產線1
 - 3rd FL: LCD production Line 2
 - 3F:LCD 產線2

LCD Product Lines & Capacity

(LCD 生産力)

Unit: Monthly Output(月産出)

Product Line		Current
14" X 16 " for TN/HTN/STN/FSTN (355.6mm X 406.4mm)	Capacity 生産力	67,200 sets 組 (30M Sq. inch)
	Equipment 設備	1 Line (automatic) 全自動
14" X 16 " for TN/HTN (355.6mm X 406.4mm)	Capacity 生産力	2 2400 sets 組 (10M Sq. inch)
	Equipment 設備	1 Line (semi-auto) 半自動



LCM Production Lines & Capacity

(LCM 生產力)

Unit: Monthly Output

單位：月產出

Process (制程)	Facilities/ Line (產線)	Output/ pieces (月產出)
COB	Semi-Auto / 7 Lines	300K
COG	Semi-Auto / 7 Lines Auto / 2 Lines	1,000K
TAB	Semi-Auto / 3 Lines Auto / 1 Line	300K
Heat seal	Semi-Auto / 8 Lines	800K
ASSEMBLY	Auto / 2 Lines	1,000K
TFT	Semi-Auto / 1 Line Auto / 1 Line	300K

TFT/LCM Product Lines & Machine

TFT/LCM 重要設備



Auto COG Machine (全自動COG)



IC Bonding Machine (IC 打線)



TFT Scribing Machine (TFT 切割機)



TFT Polarizer Attachment (TFT 貼片機)

TFT Machines (TFT 機台設備)



M500切割機
M500 Scribing

Polarizer attaching

偏光片貼附機



**TFT LCD
Equipment**

TFT 重要設備

Laser repair

雷射修補機



LC Filling

液晶注入機



封口機 *End sealing*



TFT Products Photos

(部分產品照片)

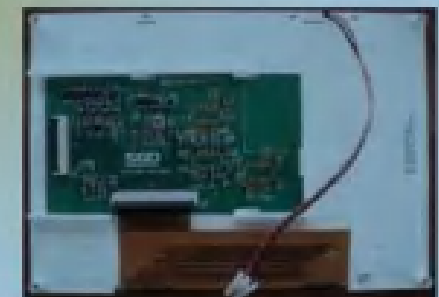
7" WVGA



5.7" QVGA



5.7" VGA



TFT Products Photos

(部分產品照片)

3.2" QVGA



3.5" QVGA



4.3" WQVGA



Strength (我們的優勢)

1. Over 20 years professional experience in display industry (超過20年顯示器制造經驗)



1. Independent campus. Only TOMY is in this industrial park. (獨立的工業園，隻有TOMY一個工廠)

2. Mono LCD/LCM through put integration lines. (LCD / LCM 我們都作，產品能夠整合在一塊)



&

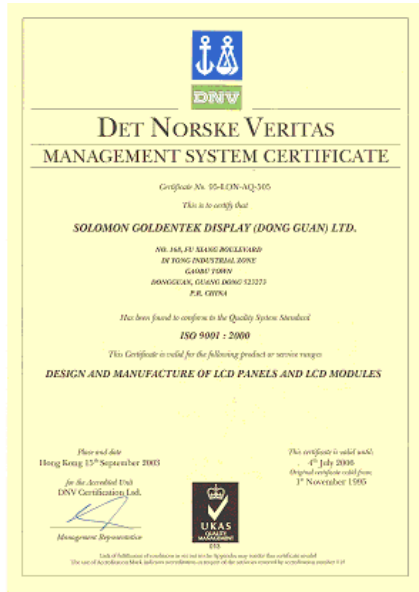


TFT Scribing & Polarizer attached Machine

3. Color TFT cutting ,
FOG, T/P , Assembly
through put integration
lines.

彩色TFT 從切割，貼偏光片到加
T/P 組裝等一條龍為客戶服務

2. Quality Assurance System. (品質保証系統健全)



ISO 9001

- Design control
- Process Control
- Document Control
- Corrective action

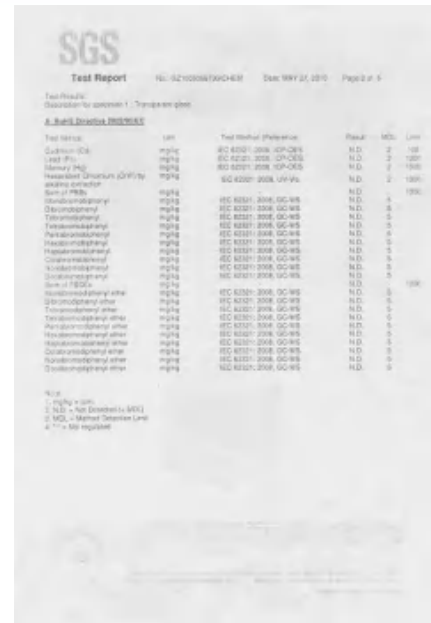
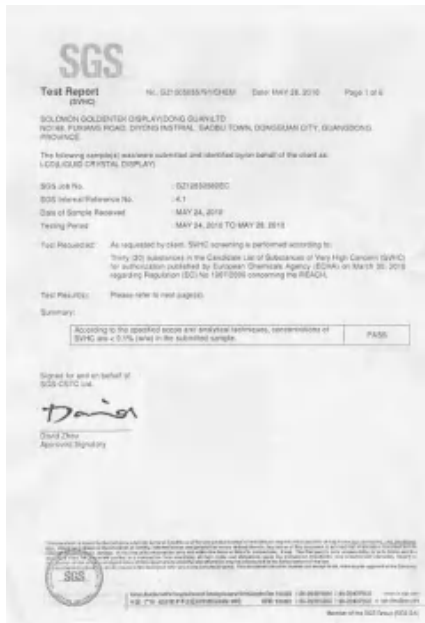
IATF16949

- Advanced product quality planning
- Production part approval process
- FMEA & SPC & MSA
- Continuous improvement

ISO 14001

- Obey laws and regulations
- Prevent all pollutions
- Save energy consumption
- Keep Kaizen in action

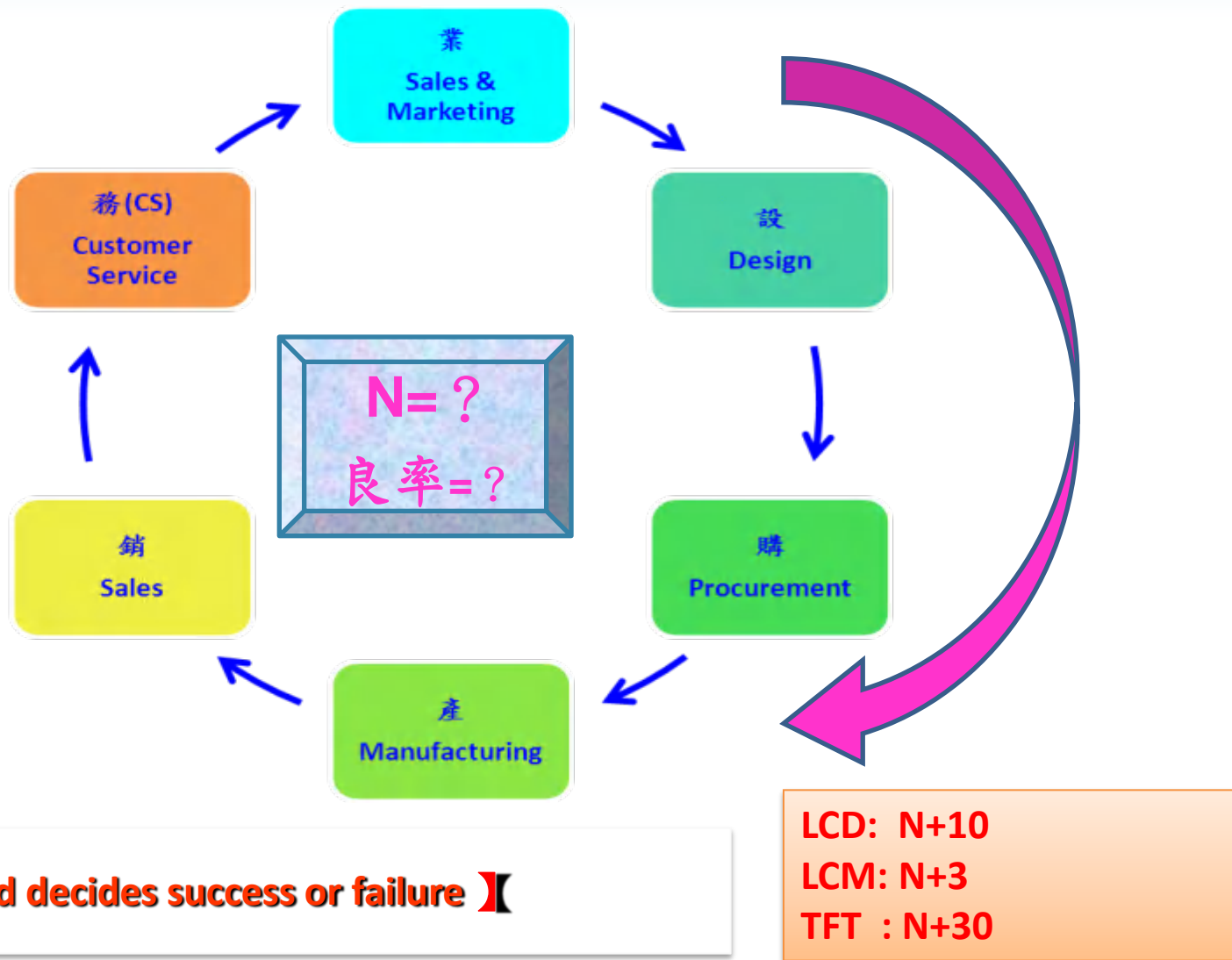
(綠色產品保證系統)



SGS-SVHC passed
Concentrations of SVHC
are<0.1%(w/w)

SGS-ROHS passed
Pb/Cd/Hg/Cr/PBB/PBD
are not detected.
(< MCL)

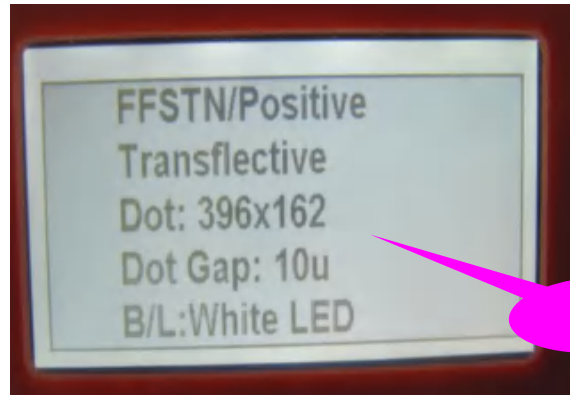
4. Oracle MRP System (MRP Oracle 系統管理)



5. Strong R&D engineering team (強大的研發團隊)



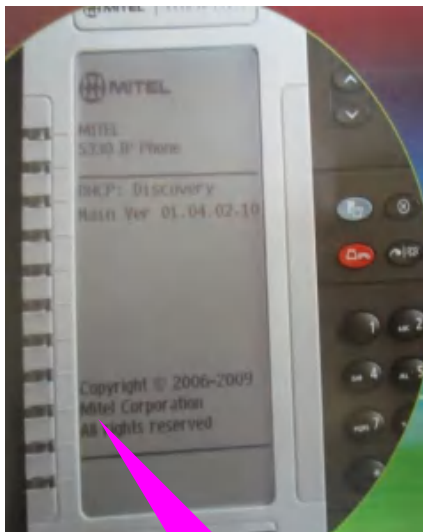
3D glasses display



10
um



Color
TN



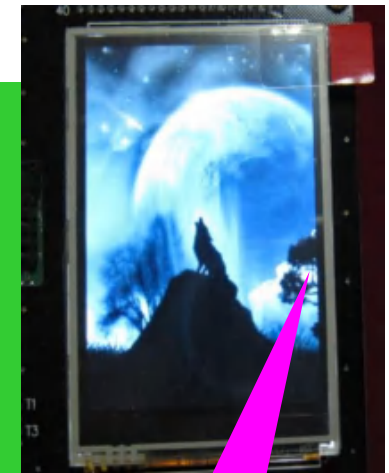
1/160
Duty

About 100 R&D engineers. (約100個工程師)

Lead 3D glasses display products. (3D 產品先驅者)

Glasses-free 3D displays are already mass produced. (裸眼3D 顯示器 已進入量產階段)

We can provide VA, 3D, LCM, TFT, etc. which you needed. (我們可以根據您的需要提供任何VA, 3D 眼鏡顯示器, LCM, TFT 產品)

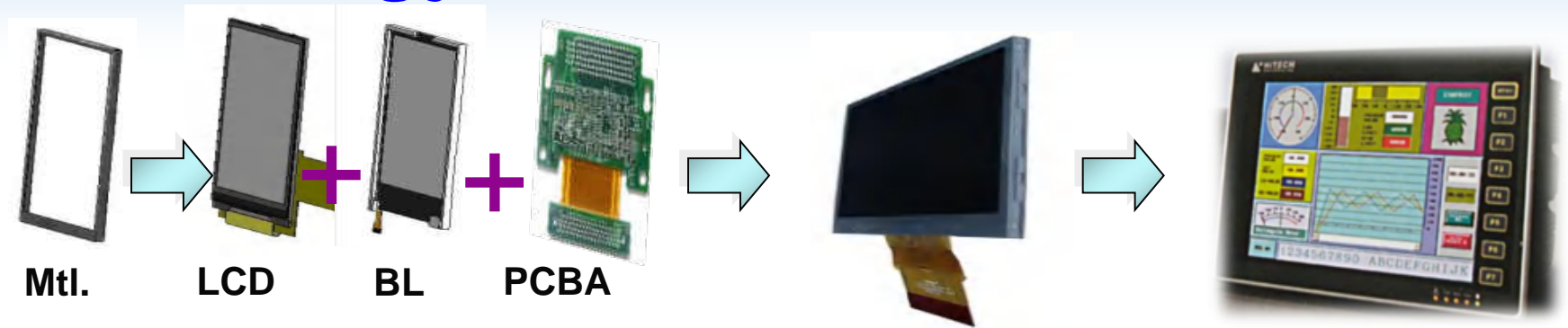


TFT with
T/P



1/4 Duty VA

Technology & Products (產品和技術)



Materials

ITO Glass
Liquid Crystal
Polarizer
Backlight
Driver IC
Color Filter
FPC
PCB
Metal Frame

LCD Products (TN, VA, 3D)

STN
FSTN
DSTN
DFSTN
FS-LCD

LCM Process

COB
COG
TAB
SMT
Color TN
TFT

3D Glasses Applications

Consumer
Automotive

Communication

IA / HA
/ OA

Industrial

TOMY Display Applications (產品應用)

Medical Devices



Consumer Products



3D Glasses



Handheld Devices

Information Appliance



Communication Device



Automotive



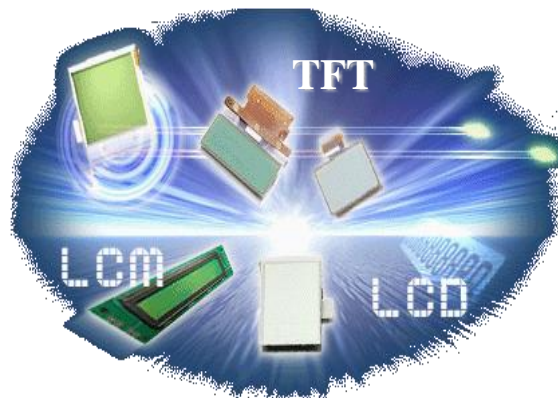
Office Automation



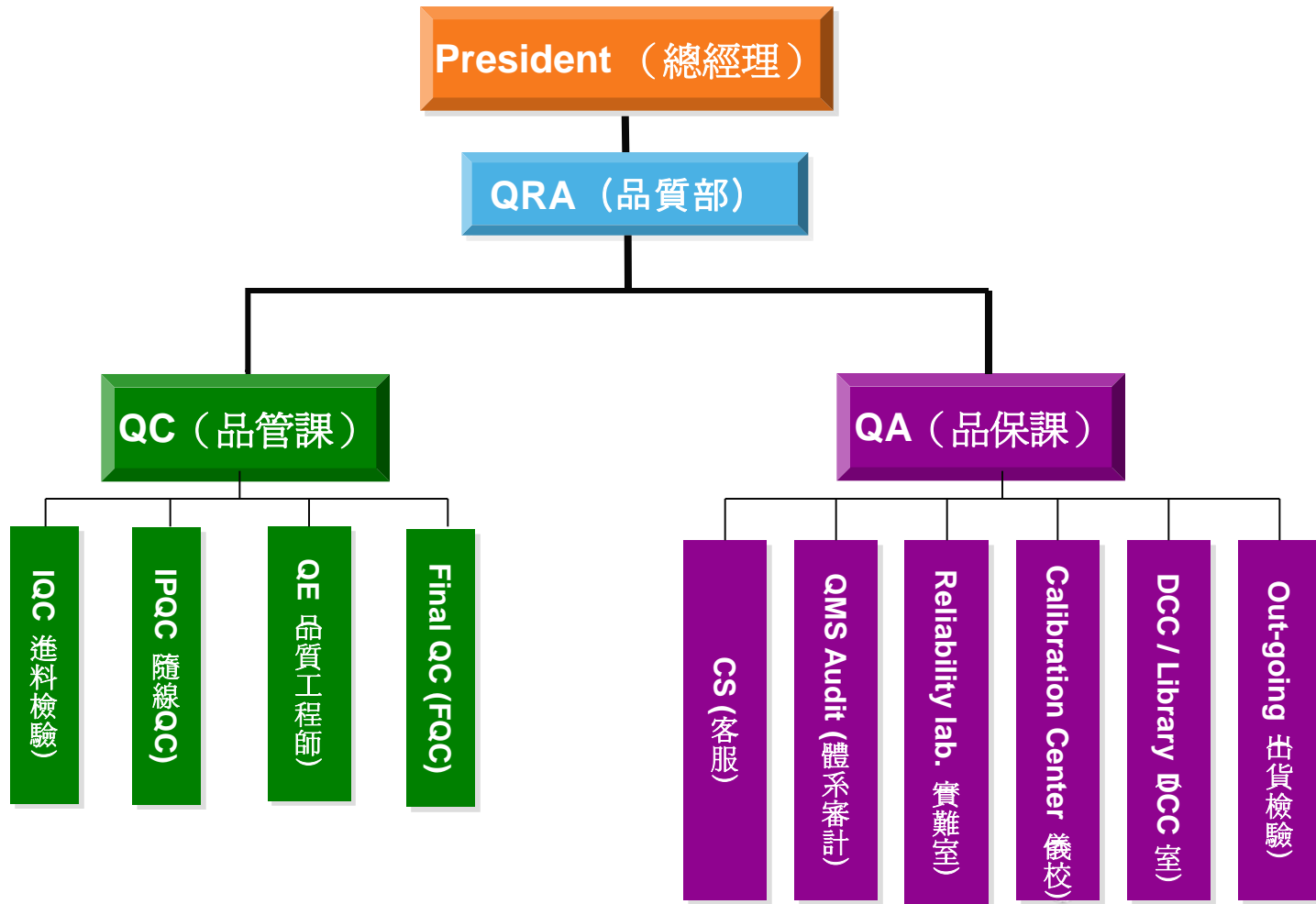
Home Appliance



Industrial Control



Quality Management Chart

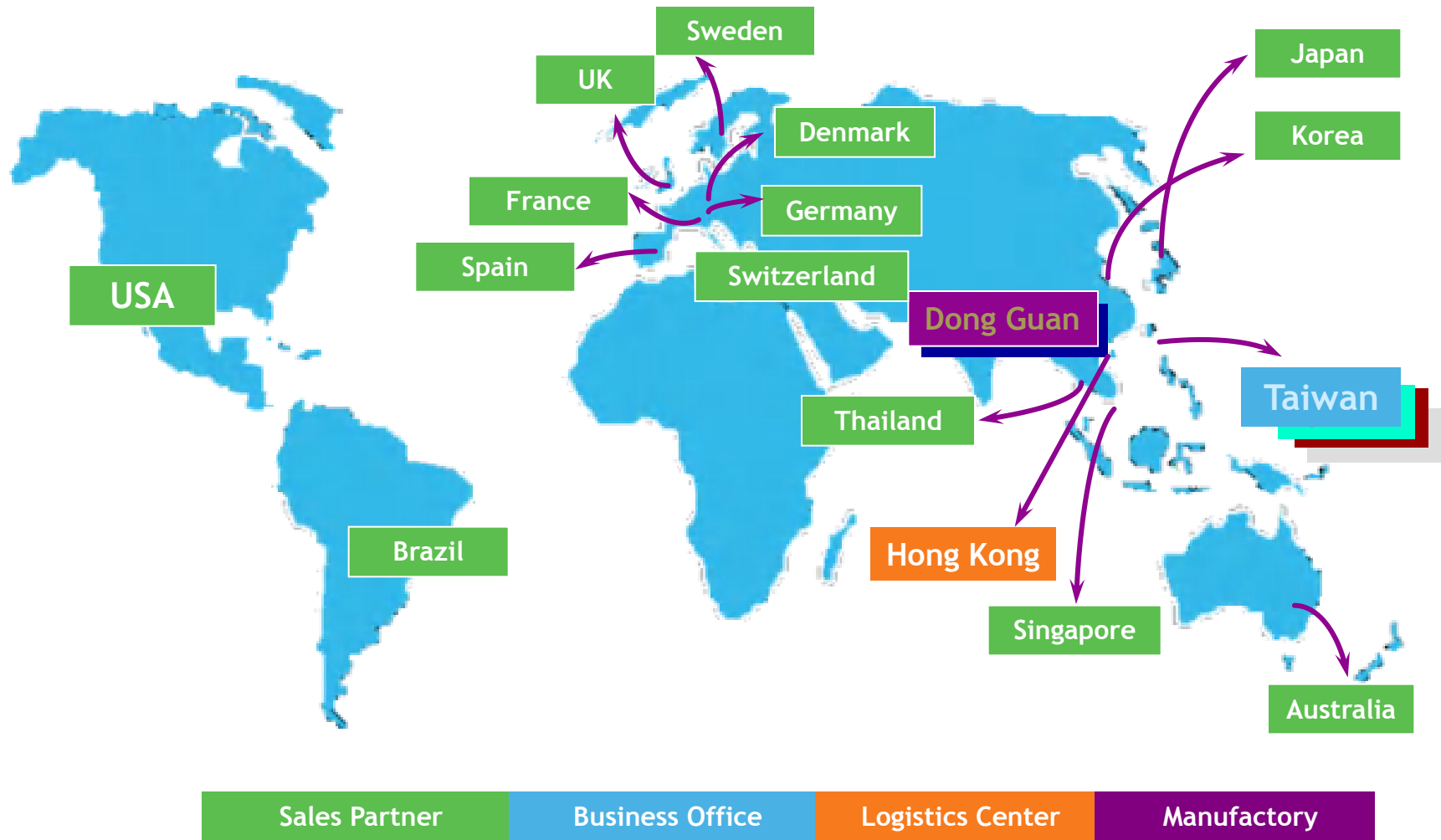


Customers Reference (客戶群)



Marketing Network 銷售網絡

(Welcome to join us 歡迎加入我們)



Thanks!