

广东高展光电股份有限公司

GUANGDONG SUPERVIEW OPTOELECTRONICS CO.,LTD.



ADD: #6, Yongyi Garden 2nd Road,
Daojiao Town, Dongguan City
Guangdong Province, China
地址: 广东省东莞市道滘镇永逸花园2路6号
Tel: +86 0769-81879935
Fax: +86 0769-81879937
Email: service@superview.com.cn
Website: <http://www.superview.com.cn/>

Superview Optoelectronics

Professional customized LCD Module Expert Since 2014

广东高展光电股份有限公司
GUANGDONG SUPERVIEW OPTOELECTRONICS CO.,LTD.



GUANGDONG SUPERVIEW OPTOELECTRONICS CO.,LTD.

We are professional manufacturer who is a national high-tech enterprise that provides customers with LCM modules, integrated touch display modules, and intelligent display and control motherboards globally. The product is widely used in fields such as smart wearables, children's toys, handheld devices, smart homes, automotive electronics, medical and health, and industrial equipments, etc.

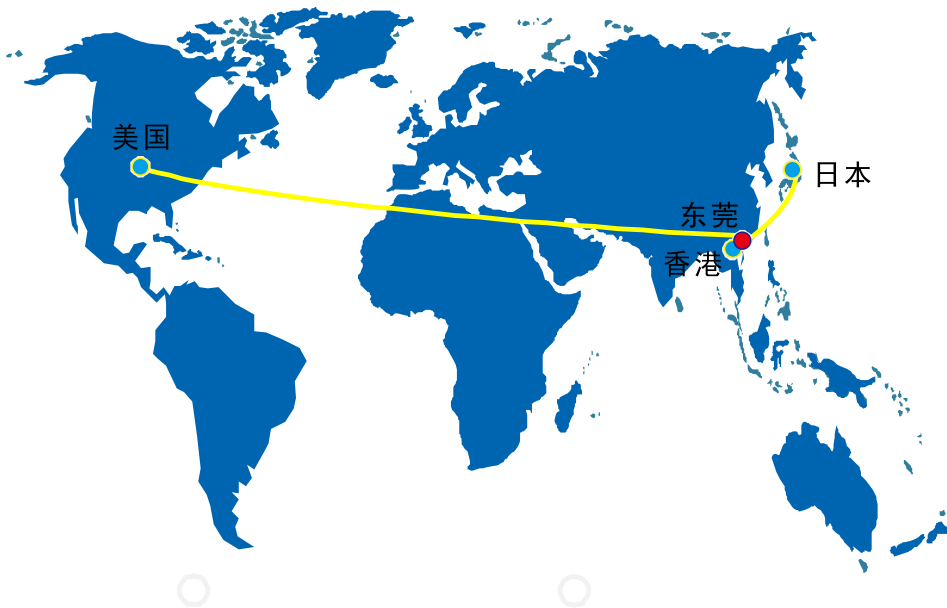


Total Acreage

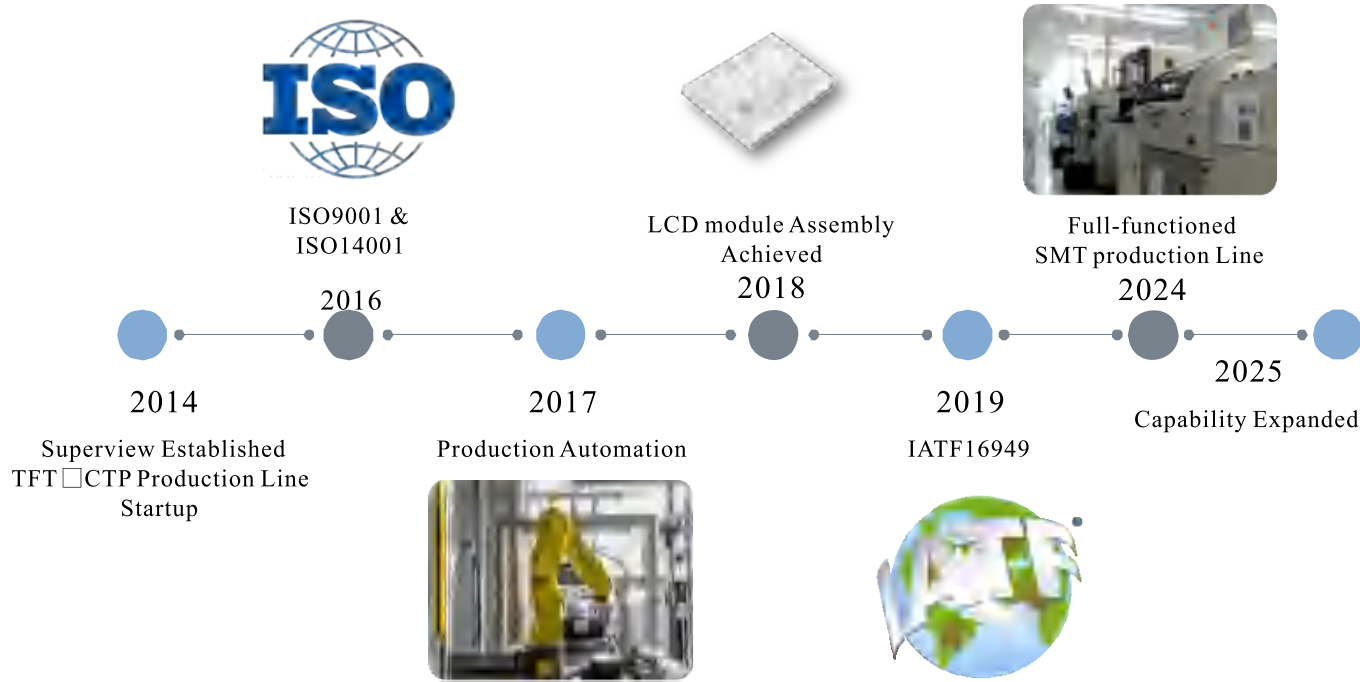
15333.52 SQM

Facotory Acreage

56357.87 SQM



- China Headquarter & Production Base
Address: #6, Yongyi Garden 2nd Road,
Daojiao Town, Dongguan, Guangdong.
- China HongKong Branch
Address: Workshop 60, 3/F, Block A,
EastSun Industrial Centre No. 16
Shingyip Street Kwun Tong Kowloon.
- US Branch, SUPERVIEW U.S.A.
Address: 20460 Carrey Road,
Walnut, Ca91789.
- Japanese Branch, SUPERVIEW Japan
Address: 686-25, Nishiterakata,
Hachioji, Tokyo, 192-0153, Japan.

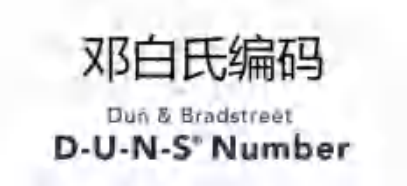


团队建设

Team Building

Certificates

体系认证

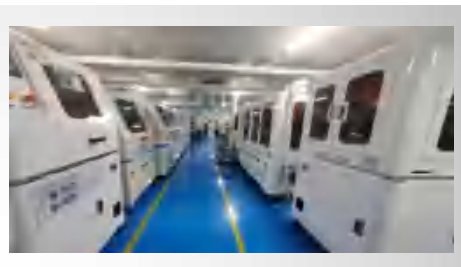


ISO14001

ISO9001

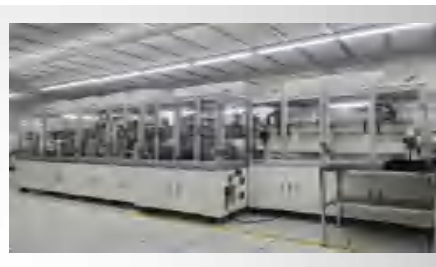
IATF16949

403754038



Fully automatic
LCM line

6 lines
size: 0.96"-15.6"
monthly capacity: 3KK



Fully automatic
CTP line

4 lines
size: 0.96"-32"
monthly capacity: 1.2KK



Fully automatic
SMT Assembly

2 lines
single/double side PCB
monthly capacity: 500K



Temperature
shock tester



Precision inspection
instrument



Spray box



Programmable temperature
and humidity box



Three-point
bending tester



Programmable
aging room



Temperature and
humidity box



Pressure tester



Brightness
tester



Low temperature
testing box



Electrostatic
discharge



Luminescence and
chroma-scale instruments



High temperature
test chamber



High-low temperature and
low pressure test chamber



Spectrograph



LCD Module

It is processed from a color LCD display screen, supporting components, and other electronic components, and can achieve color graphic display. We mainly offer the sizes from 0.96" to 15.6".



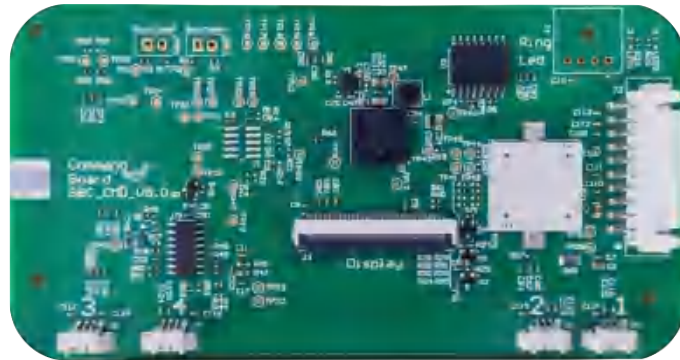
CTP

A human-machine interface device that utilizes capacitance sensing and positioning between the people and TP to achieve display and information input and output.

It is composed of a protective cover lens, sensor, OCA, FPC, and touch IC.

We mainly offer the size from 0.96" to 32".

- Acceptable for customized "G+G;G+FF;G+F;P+F;P+G"ect, all kinds of CTP under 32 inch.
- COVER LENS can meet any difficult requirements such as ultra-high hardness and friction resistance.
- FILM SENSOR ODM/OEM both can be achieved, possess the stability an reliability.



Intelligent display Control motherboard

With intelligent control board as the core and touch display integrated module as the foundation, integrating peripheral functional components, providing a complete human-machine interaction solution, plug and play.

Touch Pad

Touch pad serves as a versatile input tool: It lets users navigate screens via swipes, zoom with pinches, and select items with taps. Multi-finger gestures switch apps, while right-clicks enable quick menus. Integrated sensors ensure precise, responsive control—replacing mice for on-the-go productivity, casual browsing, and daily laptop use.



HMI

The core function of the HMI touch screen is to enable interaction between humans and complex machines or industrial systems, laying the foundation for digitalization and intelligent upgrades.



HMI for coffee maker

Panel Size	Resolution	LCM Module Number	Type	CTP	Active Area (mm)	Outline Dimension (mm)	T (mm)	Interface
0.96	80 × 160	G09601AA01A0	IPS	No	10.8 × 21.7	14.04 × 27.95	1.7	SPI
1.0	128 × 128	G010AAA085A0	IPS	G+FF	15.21 × 15.21	24.4 × 28.2	2.72	SPI
1.44	128 × 128	G144ABB685A0	IPS	P+FF	25.5 × 26.5	34.0 × 43.8	3.15	SPI
2.0	240 × 320	G020AKA185A1	IPS	G+FF	30.6 × 40.8	40.38 × 106.94	3.26	MIPI
2.4	240 × 320	G02404AB01B5	IPS	G+FF	36.72 × 48.96	42.72 × 60.26	2.5	MCU
2.8	240 × 320	G02804AY01A3	TN	G+FF	43.2 × 57.6	50.4 × 69.6	2.52	RGB
3.5	320 × 480	G03506AC01A4	TN	No	48.96 × 73.44	55.66 × 85.04	3.6	MIPI
3.97	480 × 800	G397BKA085A0	TN	G+FF	51.95 × 86.40	68.95 × 102.8	4.1	MIPI

Panel Size	Resolution	LCM Module Number	Type	CTP	Active Area (mm)	Outline Dimension (mm)	T (mm)	Interface
4.3	480 × 272	G043AGA185A0	IPS	G+G	95.04 × 53.86	105.42 × 67.07	5.03	RGB
4.3	480 × 800	G043APA185A2	IPS	G+G	56.16 × 93.6	77.0 × 117.0	3.9	MIPI
5.99	720 × 1440	G599ACA685A7	IPS	INCELL	68.04 × 136.08	94.0 × 162.0	2.87	MIPI
6.745	720 × 1600	G674ABA085A2	IPS	INCELL	70.3 × 156.24	76.0 × 167.9	2.4	MIPI
7	1024 × 600	G070AAA485A1	IPS	G+G	154.21 × 85.92	178.0 × 133.0	4.2	RGB
8	800 × 1280	G080BBA085A0	IPS	G+G	107.64 × 172.22	125.6 × 201.98	5.08	MIPI
10.1	1200 × 1920	G10136AA01B6	IPS	G+G	135.36 × 216.58	157.2 × 238.4	4.18	MIPI
15.6	1920 × 1080	G156ADA085A0	TN	G+G	344.16 × 193.59	363.8 × 215.09	6.75	LVDS

产品应用

Applications



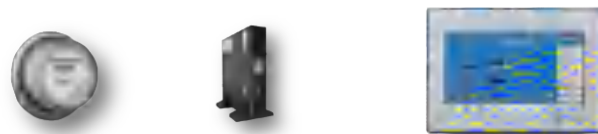
40%

Home Appliances



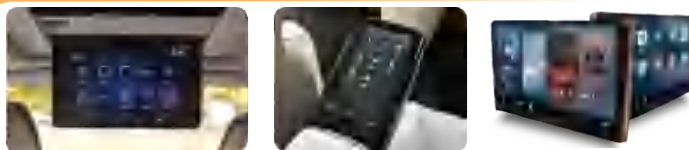
36%

Industry



12%

Automotive



6%

Medical



6%

Others



Product Showcase

产品展示



PAX is the world's largest POS machine supplier, with business coverage in over 120 countries worldwide and a cumulative global shipment volume of over 56 million units. We are the major supplier of LCD and touch screens for Pax.



Casarte
卡萨帝

Casarte is a upmarket home appliance brand under haier , The Casarte refrigerator adopts our 6.86-inch screen.



Panasonic

Panasonic's intelligent access control phone uses our company's 7-inch main display, as well as 2.2-inch and 2.4-inch sub display.



Supervision provide LCD Module with CTP for BYD.

Vtech is a listed company on the HK and London Stock Exchange, and is the world's largest enterprise in electronic learning products for infants and preschool children. Their children's smart watch is a star product of Vtech.

Electronic and electrical testing instruments, temperature and environmental testing instruments, surveying and mapping measurement instruments.

Unveiling the first product in 2016, they have successively launched a series of commercial IoT products such as mobile terminals, payment terminals, desktop terminals, kiosks, and network, video analytics, etc., serving various business formats and scenarios.

EMERSON's UPS use Supervision 1.44-7inch Standard size TFT display

The FRENIC-MEGA series universal frequency converter from Fuji Electric Co., Ltd. uses our 7-inch screen.



SAMSUNG
Air monitor



Motorola
Baby monitor



Alibaba
Smart-light



TVT
Infrared thermometer



Tachograph



Education tablet



Children's
Electronic toy

Panasonic

富士电机

SAMSUNG

vtech

PAX

SUNMI

Baidu 百度

Alibaba Group
阿里巴巴集团

UNI-T
优利德

uCloudlink

BYD

FLY AUDIO 飞歌

SANNVO 三诺

雀巢 Nestle

盈趣科技
Intretech

Casarte
卡萨帝

EMERSON

BOSE
Better sound through research

RIGOL
竞源精密

TYMPHANY
迪芬尼

SNK

SKODA

DIEHL
Metering

TVT 同为数码
TVT DIGITAL

Topband
拓邦

供应商

Suppliers

LCD Panel

HannStar

INNOLUX
群創光電

AUO

BOE

Driver IC

Sitronix

Himax

NOVATEK
联咏科技

fitipower

Touch IC

Synaptics

CYPRESS
EMBEDDED IN TOUCHSCREEN

FocalTech

GOODIX
汇顶科技

FPC

Longneng

Juniper
FPCB SHENZHEN
珠海海迅

Mitsumi

Backlight

SAILING
利航电子

Guangyu

Haichenxing

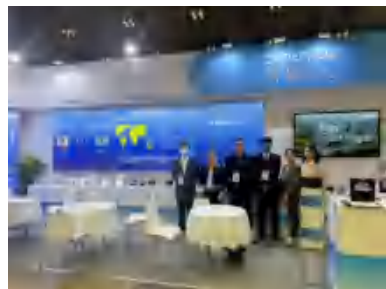
Our Exhibitions

展会风采



embeddedworld
Exhibition & Conference
... It's a smarter world

electronica



FINETECH JAPAN
日本平板制造展