

Healthy Nutrition, Lifelong Companion.

LITPET®



2026

Product Brochure EU&UK

Where ancient wisdom meets modern science.



Welcome to LitPet



Welcome to LitPet

Your Lifetime Companion for You and Your Beloved Pet

Welcome to the LitPet family! We are beyond thrilled that you've chosen us to join you and your beloved companion on this journey. At LitPet, we don't just see pets as "owners' property"—we see them as family members who deserve a lifetime of intentional care and scientific excellence.

Why Choose LitPet?

Because We're Winning Hearts (and Awards).

Since our inception, we've been on a mission to redefine the standard of pet care. We are proud to share that our dedication to innovation hasn't gone unnoticed:

2025 PetQuip Gold Award Winner

We were honored with the Gold Award for New Promising Business Starter in the UK, recognizing our commitment to shaking up the industry for the better.

4.5/5.0 on Trustpilot

Our community has spoken! With a near-perfect rating, we are humbled by the trust pet guardians like you place in our products every day.

A Commitment Beyond the Bowl

Choosing LitPet is more than a purchase; it's a lifetime commitment to your pet's physical and emotional well-being. We believe a healthy pet belongs on a healthy planet, which is why we use FSC-certified, 100% recyclable packaging and nature-positive manufacturing processes.

"We treat your pet's health as our own—ensuring that every product is a benefit to the animal and a gift to the world." — Stephen Hu, Founder & CEO

Thank you for trusting us to be your partner in care. We can't wait to witness every milestone, every "zoomie," and every peaceful nap alongside you. Welcome to a world of Intentional Care. Welcome to LitPet.

Sincerely,
The LitPet Team

Preface



Content

Welcome to LitPet	01
Instructions	03
Contact Us	04
Brand Overview	05
LitPet Daily Basic Functional Series	
LitPet Daily Functional Meaty Mix Series	06
LitPet Nourishing Meal Pouch Series	12
LitPet Professional Advanced Care Series	17-28
The Development and Scientific Basis of LitPet Products	29-32
Legal and Warranty Information	33-34
Customer Service	35

Instructions

In this product book, you will discover all the products offered under the LitPet brand. This guide includes detailed information on our diverse range of products:

LitPet Daily Basic Functional Series

LitPet Professional Advanced Care Series

LitPet Functional Fresh Meal Pouch Series

LitPet Medical Targeted Healing Series
(Clinic Exclusive)



Each product line is detailed on its own page, allowing you to quickly find the information you are interested in. We are committed to regularly updating this manual to include the latest product information, ensuring you are always well-informed about our newest offerings.

We welcome your questions at any time and encourage you to point out any inaccuracies you might find in this product book. Your feedback is invaluable as it helps us make timely corrections and improve our service to better care for pets.



Thank you for trusting LitPet as your partner in pet health and wellness. We look forward to assisting you and your beloved pets with our comprehensive, continually evolving product line.



Contact Us

Contact us through email for specific inquiries:

For Product Information:

Email:
marketing@litpet.org

For Issues Related to Anti-Corruption and Anti-Bribery:

Email:
CPAS@onepetfamily.com

For Career Opportunities and Talent Recruitment:

Email:
contactus@litpet.org

Official Website:

● www.litpet.co

Whatsapp:

● +44 07723 252060 (UK)

Instagram:@LitPet_UK

Threads:@LitPet_UK

TikTok:LitPet_UK

WeChat:LitPet_Healthy

Brand Overview

Healthy Nutrition, Lifelong Companion.

"Eastern Health Philosophy" emphasizes holistic health and disease prevention, forming the cornerstone of the LitPet brand philosophy.

We propose "Integrated Nurturing and Healing"! This method not only targets your pet's specific symptoms but also boosts their overall health. By enhancing their immune systems and strengthening their bodies, we're committed to elevating their quality of life to new heights!

LitPet also has 2 labs:

[Innovation Research Lab]

LitPet has an R&D Department in Hong Kong and London. It uses biopharmaceutical technology to examine the integration of academic research and herbal medicine, aiming to enhance bodily functions and maintain optimal health.

[Co-Creation Lab]

This open co-creation platform promotes a sustainable lifestyle for pets and their owners and invites partners from various fields to share their ideas through planned creative works, exhibitions, community events, and other diverse formats.

At LitPet, we place your pet's nutrition, growth, and happiness at the forefront. Our mission is to help every pet live a healthy, joyful life.

Driven by pets' real daily health needs, we redefine nutritional standards and craft scientifically formulated products tailored to their well-being.



Product Introduction

LitPet Daily Functional Series Meaty Mix Series

LitPet Daily Functional Meaty & Mix Series is co-developed by the LitPet product team. This series is designed as advanced nutritional supplements specifically for small to medium-sized dogs and cats. These products meet stringent U.S. AAFCO nutritional standards and are enriched with exclusive ancient herbal extracts. LitPet guarantees safety with 0 additives—no colorants, no artificial flavours, and no preservatives, leading the market with the highest concentration of active ingredients in our top-rated functional paste strips.



LitPet Digest Well Paste Sticks (For Cats & Dogs)

Made in the UK

Real Chicken

Advanced Digestive Support & Immune Vitality in One Daily Stick

Benefits

Supports Intestinal Health

Provides 75mg of Lactoferrin per stick, a natural protein that helps maintain a healthy intestinal environment and supports the gut's natural defense.

Promotes Microbial Balance

Rich in Fructooligosaccharides (FOS) and other prebiotics to promote the growth of beneficial gut bacteria and help maintain a balanced microbiome.

Supports Natural Immunity

Features rare Reishi Mushroom (broken spore powder) to provide targeted nutrients that help support your pet's natural immune response.

Maintains Intestinal Integrity

Provides Egg Yolk powder (IgY) to help support the intestinal barrier and promote the long-term health of the digestive lining.

Helps Sensitive Stomachs

Provides a gentle, lactose-free formula that supports smooth digestion for pets with food sensitivities.

Ingredients

Raw Ingredients:

Chicken 75%, water, egg white powder 3%, egg yolk powder 1%, flaxseed powder 0.8%, whole goat milk powder (lactose-free) 0.5%, fructo-oligosaccharides 0.3%, yeast hydrolysate 0.2%, reishi mushroom powder 0.2%, mannan-oligosaccharides 0.2%, sodium hyaluronate 0.2%, inactivated Lactobacillus plantarum 0.1%, lactoferrin 0.01%.

Specifications

Standard Size 15g * 10 sticks/pouch



Dosage Guide

Suitable For:

Dogs and cats aged 3 months and older.
1 stick per 4kg of body weight per day.

Additives (per kg): Nutritional:

Taurine (3a370) 1300 mg, Vitamin A (3a672a, Ethinyl Acetate) 20,000 IU, Vitamin D3 (3a671, Cholecalciferol) 2,000 IU, Vitamin E (3a700, All-rac-alpha-tocopheryl Acetate) 50 mg.

Technological:

Inactivated Lactobacillus plantarum (Postbiotic) 1,000 mg, Sodium Hyaluronate (2,000mg), Fructooligosaccharides (FOS), Oligooligosaccharides.

LitPet Urinary Guard Paste Sticks (For Cats & Dogs)

Made in the UK

Real Chicken & Duck

Daily Support for Urinary Tract Wellness & Hydration

Benefits

Supports Urinary Tract Integrity

Provides 150mg of high-potency cranberry extract per stick to help maintain a healthy urinary tract and support natural mucosal protection.

Promotes Natural Hygiene

Provides antioxidant-rich botanicals that help maintain a healthy inflammatory response and support the body's natural defense against environmental stressors.

Helps Maintain Urinary Balance

Features a specialized herbal formula that helps balance urine pH and promotes a healthy internal environment, supporting long-term kidney and bladder wellness.

Encourages Healthy Hydration

Promotes increased water intake with a highly palatable formula that helps flush the urinary system and maintain daily comfort.

Provides Premium Nutrition

High-quality duck and chicken provide the essential proteins needed to support overall vitality and health.



Dosage Guide

Suitable For:

Dogs and cats aged 3 months and older.
1 stick per 4kg of body weight per day.

Ingredients

Raw Ingredients:

Chicken 56%, water, duck 21%, egg white powder 3%, egg yolk powder 1%, cranberry powder 1%, flaxseed powder 0.8%, astragalus powder 0.1%, psyllium powder 0.1%, ginkgo leaf powder 0.1%, sodium hyaluronate 0.2%.

Additives:

Taurine (3a370) 1300 mg, Vitamin A (Retinyl Acetate 3a672a) 50 IU, Vitamin D3 (Cholecalciferol 3a671) 50 IU, Vitamin E (All-rac-alpha-tocopheryl Acetate 3a700) 50 mgU.

Specifications

Standard Size 15g * 10 sticks/pouch

LitPet Bone Boost Paste Sticks (For Cats & Dogs)

Made in the UK

Real Chicken & Salmon

Advanced Mobility Support & Structural Integrity for Active Lives

Benefits

Comprehensive Joint & Bone Support

Provides a professional-grade formula including 30mg of Ovopet® Eggshell Powder and 75mg of Type II Collagen per stick to support long-term skeletal health and structural strength.

Promotes Joint Lubrication & Elasticity

Helps maintain healthy synovial fluid levels to support smooth joint movement and support the natural maintenance of cartilage tissues.

Supports a Healthy Inflammatory Response

Features a synergistic blend of Green-lipped Mussel, Turmeric, and MSM to help maintain physical comfort and support natural recovery after activity.

Enhances Mobility & Vitality

Promotes overall range of motion and helps maintain bone density, ensuring pets stay active, agile, and happy throughout their lives.

Provides Essential Building Blocks

Delivers high-strength Glucosamine and Chondroitin to support the body's natural processes of tissue maintenance.

Ingredients

Raw Ingredients:

Chicken 42%, salmon 35%, water, egg white powder 3%, green-lipped mussel 2%, egg yolk powder 1%, flaxseed powder 0.8%, type II collagen 0.5%, glucosamine hydrochloride 0.2%, sodium hyaluronate 0.2%, methylsulfonylmethane (MSM) 0.2%, eggshell powder with eggshell membrane (OvoPet®) 0.2%, chondroitin sulphate 0.1%, tea polyphenols 0.1%, astragalus powder 0.1%, turmeric powder 0.1%.

Specifications

Standard Size 15g * 10 sticks/pouch



Dosage Guide

Suitable For:

Dogs and cats aged 3 months and older.
1 stick per 4kg of body weight per day.

Additives:

Taurine (3a370) 1300 mg, Vitamin A (Retinyl Acetate 3a672a) 50 IU, Vitamin D3 (Cholecalciferol 3a671) 50 IU, Vitamin E (All-rac-alpha-tocopheryl acetate 3a700) 50 mg.

LitPet Pawsitive Calm Paste Sticks (For Cats & Dogs)

Made in the UK

Real Chicken

Natural Relaxation & Emotional Balance for a Peaceful Life

Benefits

Support Relaxation & Emotional Balance

Provides 60mg of Lactium® (hydrolysed casein) per stick, a natural milk-derived protein that helps manage signs of environmental stress and promotes a calm, settled state.

Supports Nervous System Function

Enriched with L-theanine and B-vitamins to help maintain healthy brain function and support the nervous system during periods of increased pressure.

Promotes Natural Immunity

Helps maintain your pet's natural defences, which can be compromised by stress, ensuring your pet stays resilient and healthy.

Helps Maintain Restful Sleep

Provides targeted nutritional support to promote natural sleep cycles, helping pets wake up feeling energized and refreshed.

Provides Soothing Nutrients

Features Green Tea extract and Colostrum to provide a synergistic effect that supports long-term behavioural well-being.

Ingredients

Raw Ingredients:

Chicken 77%, water 17.43%, egg white powder 3%, egg yolk powder 1%, flaxseed powder 0.8%, hydrolysed casein (Lactium®) 0.4%, bovine colostrum powder 0.1%, tea polyphenols 0.1%.

Specifications

Standard Size 15g * 10 sticks/pouch



Dosage Guide

Suitable For:

Dogs and cats aged 3 months and older.
1 stick per 5kg of body weight per day.
For best results during acute stress events, administer 30–60 minutes beforehand.

Additives:

Taurine (3a370) 1300 mg, Vitamin B1 (Thiamine Mononitrate 3a821) 1000 mg, Vitamin B6 (Pyridoxine Hydrochloride 3a831) 20 mg, Vitamin B12 (Cyanocobalamin 3a387) 20 mg, Vitamin A (Retinyl acetate 3a672a) 20,000 IU, Vitamin D3 (Cholecalciferol 3a671) 2,000 IU, Vitamin E (All-rac-alpha-tocopheryl acetate 3a700) 50 mg.

LitPet Skin & Coat Paste Sticks (For Cats & Dogs)

Made in the UK

Real Chicken & Salmon

The Gold Standard for a Radiant, Silky Coat

Benefits

Promotes a Radiant, Glossy Coat

Provides a concentrated 432mg of Omega-3 per 15g serving to promote natural fur shine and vibrancy.

Supports Skin Barrier Function

Helps maintain the skin's natural protective barrier against environmental factors using pharmaceutical-purity EPAX® fish oil.

Helps Maintain Resilience

Provides a 70% high-protein blend of chicken and salmon to help maintain coat strength and resilience.

Supports Cellular Health

Enriched with essential Vitamin A and Vitamin E to support long-term healthy skin cells and overall vitality

Provides Balanced Nutrition

Features a scientifically balanced 3:2 EPA to DHA ratio to support systemic skin health for both cats and dogs.

Ingredients

Raw Ingredients:

Chicken (60%), salmon (17%), water, fish oil (EPAX) (5%), egg white powder (3%), flaxseed powder (0.8%).

Additives:

Taurine (3a370) 1300 mg, Vitamin A (Retinyl acetate 3a672a) 20,000 IU, Vitamin D3 (Cholecalciferol 3a671) 3,000 IU, Vitamin E (All-rac-alpha-tocopheryl acetate 3a700) 50 mg.

Specifications

Standard Size 15g * 10 sticks/pouch



Dosage Guide

Suitable For:

Dogs and cats aged 3 months and older.
1 stick per 5kg of body weight per day.

LitPet Nourishing Meal Pouch Series

The LitPet Nourishing Meal Pouch Series is the definitive expression of our "Bio-Wellness" mission, designed to transition pet nutrition from mere sustenance to restorative care. Each pouch is a zero-addition commitment to purity, combining high-quality proteins from small UK farms with pharmaceutical-grade botanicals like Lingzhi and Astragalus to target health at its root.



LitPet Digestive Comfort Nourishing Meal Pouch (For Cats and Dogs)

Made in the UK

Supports gut balance from the inside out, where over 70% of your pet's immunity begins. This gently cooked chicken recipe is packed with fiber-rich vegetables and natural prebiotics to promote healthy digestion and nutrient absorption.

Benefits

- Promotes gut health and smooth digestion
- Gently supports immunity via the gut-microbiome axis
- Natural prebiotics to fuel beneficial gut bacteria
- Gentle on sensitive stomachs

Ingredients

Raw Ingredients:

Chicken breast (80%), water, sunflower oil, pumpkin, broccoli, Chinese yam, potato starch, egg yolk powder, psyllium husk powder (0.3%), astragalus (0.1%), liquorice (0.1%).

Nutritional Additives(per kg):

3a370 taurine 1,500 mg; fructo-oligosaccharides (FOS) 1,000 mg; mannan-oligosaccharides (MOS) 1,000 mg; 3a672a vitamin A 80 IU; 3a671 vitamin D3 6.72 IU; 3a700 vitamin E 12.8 mg.

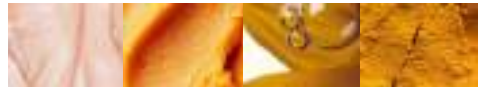
Trace elements:

3b107 iron (iron chelate of glycine, hydrate)

Specifications

Standard Size

For Cats 80g/pouch; 10 pouches/box
For Dogs 120g / pouch; 10 pouches/box



3.24 mg; 3b407 copper (copper chelate of glycine, hydrate) 0.79 mg; 3b612 zinc (zinc chelate of protein hydrolysates) 6.40 mg; 3b505 manganese (manganous chelate of protein hydrolysates) 1.64 mg; iodine (as calcium iodate, anhydrous) 0.104 mg.

Analytical Constituents:

Crude Protein 12.0%, Crude Fat 3.5%, Crude Ash 2.2%, Crude Fibre 1.5%, Moisture 83.0%, Calcium 0.18%, Phosphorus 0.14%, Taurine 0.1%, Lysine 0.8%.

Dosage Guide

Feeding Guide:

Serve as a topper or complementary meal alongside a complete and balanced diet. Adjust based on activity level, age, and breed. Always provide access to clean, fresh water.

LitPet Hydration & Urinary Nourishing Meal Pouch (For Cats and Dogs)

Made in the UK

A targeted blend for urinary wellness, featuring lean duck and beef, pumpkin, and urinary-friendly superfoods like cranberries. Formulated to help reduce urinary tract irritation and maintain optimal hydration.

Benefits

- Supports healthy urinary tract function
- Encourages natural hydration and regular urination
- Natural antioxidants from fruits and vegetables
- Low in ash, gentle on bladder and kidney health

Ingredients

Raw Ingredients:

Duck Breast (70%), Beef (10%), Water, Sunflower Oil, Carrots, Okra, Goji Berries, Potato Starch, Egg Yolk Powder, Cranberry Powder (0.3%), Reishi Mushroom (0.1%), Schisandra (0.1%).

Nutritional Additives(per kg):

3a370 Taurine 1,500 mg; 3c301 DL-methionine 1,000 mg; 3a672a Vitamin A 640 IU; 3a671 Vitamin D3 67.2 IU; 3a700 Vitamin E 12.8 mg; 3a821 Vitamin B1 4.76 mg; 3a825i Vitamin B2 0.52 mg; 3a314 Niacin 4.48 mg; 3a831 Vitamin B6 0.77 mg; 3a835 Vitamin B12 0.0056 mg; 3a841 Calcium D-pantothenate 0.69 mg; 3a880 Biotin 0.0056 mg; 3a316 Folic acid 0.11 mg.

Specifications

Standard Size

For Cats 80g/pouch; 10 pouches/box

For Dogs 120g / pouch; 10 pouches/box



Trace Elements:

3b202 Iodine (as Calcium iodate anhydrous) 0.104 mg; 3b108 Iron (as Iron(II) chelate of glycine hydrate) 3.24 mg; 3b413 Copper (as Copper(II) chelate of glycine hydrate) 0.79 mg; 3b612 Zinc (as Zinc chelate of protein hydrolysates) 5.64 mg; 3b505 Manganese (as Manganese chelate of protein hydrolysates) 1.64 mg.

Analytical Constituents:

Crude Protein 12.0%, Crude Fat 3.5%, Crude Ash 2.2%, Crude Fibre 1.5%, Moisture 83.0%, Calcium 0.18%, Phosphorus 0.14%, Taurine 0.1%, Lysine 0.8%.

Dosage Guide

Feeding Guide:

Serve as a topper or complementary meal alongside a complete and balanced diet. Adjust based on activity level, age, and breed. Always provide access to clean, fresh water.

LitPet Skin & Coat Glow Nourishing Meal Pouch (For Cats and Dogs)

Made in the UK

Shine from within. This omega-rich meal features duck and mixed fish to nourish skin and promote a healthy, glossy coat. Enriched with flaxseed and marine oils for natural anti-inflammatory support.

Benefits

- Supports skin hydration and resilience
- Promotes a shiny, vibrant coat
- Rich in omega-3 fatty acids (EPA/DHA)
- Anti-inflammatory nutrients to reduce shedding and irritation

Ingredients

Raw Ingredients:

Duck Breast 70%, Salmon 12%, Fish Oil 2%, Carrot 2%, Seaweed (*Undaria pinnatifida*) 1.5%, Potato Starch 1%, Goji Berry 1%, Egg Yolk Powder 1%, *Angelica sinensis* 0.1%.

Nutritional Additives(per kg):

Vitamins: 3a370 Taurine 1,604 mg; Fructooligosaccharides (FOS) 0.15%; 3a672a Vitamin A 640 IU; 3a671 Vitamin D3 67.2 IU; 3a700 Vitamin E 12.8 mg; 3a821 Vitamin B1 4.76 mg; 3a825i Vitamin B2 0.52 mg; 3a314 Niacin 4.48 mg; 3a831 Vitamin B6 0.77 mg; 3a841 Calcium D-pantothenate 0.69 mg; 3a316 Folic acid 0.11 mg; 3a880 Biotin 0.0056 mg; 3a835 Vitamin B12 0.0056 mg.

Trace Elements:

3b612 Zinc (as Zinc chelate of protein



hydrolysates) 5.64 mg; 3b108 Iron (as Iron(II) chelate of glycine hydrate) 3.24 mg; 3b505 Manganese (as Manganese chelates of protein hydrolysates) 1.64 mg; 3b413 Copper (as Copper(II) chelate of glycine hydrate) 0.79 mg; 3b202 Iodine (as Calcium iodate anhydrous) 0.104 mg. Technological Additives: 1c322i Lecithins 5,000 mg.

Analytical Constituents:

Crude Protein 12.0%, Crude Fat 3.5%, Crude Ash 2.2%, Crude Fibre 1.5%, Moisture 83.0%, Calcium 0.18%, Phosphorus 0.14%, Taurine 0.1%, Lysine 0.8%.

Dosage Guide

Feeding Guide:

Serve as a topper or complementary meal alongside a complete and balanced diet. Adjust based on activity level, age, and breed. Always provide access to clean, fresh water.

Specifications

Standard Size

For Cats 80g/pouch; 10 pouches/box

For Dogs 120g / pouch; 10 pouches/box

LitPet UK Joint Comfort Nourishing Meal Pouch (For Cats and Dogs)

Made in the UK

For pets who need a little extra joint care. This protein-packed meal combines bioavailable chicken and lamb with natural ingredients like egg yolk and antioxidant vegetables to nourish mobility and vitality.

Benefits

- Supports joint comfort and flexibility
- High-protein, low-fat for lean muscle maintenance
- Nutrient density is ideal for aging or active pets
- Enriched with natural anti-inflammatory ingredients



Ingredients

Raw Ingredients:

Chicken Breast (70%), Lamb (10%), Water, Sunflower Oil, Carrots, Okra, Goji Berries, Potato Starch, Egg Yolk Powder, Glucosamine Hydrochloride (0.12%), Turmeric (0.1%).

Nutritional Additives(per kg):

3a370 Taurine 1,604 mg; Fructo-oligosaccharides (FOS) 0.15%; 3a672a Vitamin A 640 IU; 3a671 Vitamin D3 67.2 IU; 3a700 Vitamin E 12.8 mg; 3a821 Vitamin B1 4.76 mg; 3a825i Vitamin B2 0.52 mg; 3a314 Niacin 4.48 mg; 3a831 Vitamin B6 0.77 mg; 3a841 Calcium D-pantothenate 0.69 mg; 3a316 Folic acid 0.11 mg; 3a880 Biotin 0.0056 mg; 3a835 Vitamin B12 0.0056 mg.

Trace Elements:

Specifications

Standard Size

For Cats 80g/pouch; 10 pouches/box

For Dogs 120g / pouch; 10 pouches/box

3b612 Zinc (as Zinc chelate of protein hydrolysates) 5.64 mg; 3b108 Iron (as Iron(II) chelate of glycine hydrate) 3.24 mg; 3b505 Manganese (as Manganese chelates of protein hydrolysates) 1.64 mg; 3b413 Copper (as Copper(II) chelate of glycine hydrate) 0.79 mg; 3b202 Iodine (as Calcium iodate anhydrous) 0.104 mg.

Analytical Constituents:

Crude Protein 12.0%, Crude Fat 3.5%, Crude Ash 2.2%, Crude Fibre 1.5%, Moisture 83.0%, Calcium 0.18%, Phosphorus 0.14%, Taurine 0.1%, Lysine 0.8%.

Dosage Guide

Feeding Guide:

Serve as a topper or complementary meal alongside a complete and balanced diet. Adjust based on activity level, age, and breed. Always provide access to clean, fresh water.

LitPet Professional Advanced Care Series

LitPet professional advanced care series was developed collaboratively by British and Hong Kong veterinary professionals, animal nutrition experts, and academic scientists. Designed to assist in the treatment of various pet ailments, this line alleviates the physiological damage that diseases cause in pets, is tailored for dogs and cats with specific health improvement needs, and is specifically for middle-aged and older dogs and cats.





LitPet Cardio Plus Powder (For Dogs)

Made in the UK 100% Natural & Sustainable Ingredients
Daily Cardiovascular Vitality & Circulatory Support for Lifelong Wellness

LitPet CardioPlus is professionally formulated to promote and support cardiovascular health in dogs of all life stages. It is specifically designed for breeds with known heart sensitivities, senior dogs maintaining normal heart function, and active dogs requiring nutritional support for stamina. Made with high-quality botanical ingredients and scientifically advanced bioactive compounds, this gentle daily supplement promotes healthy circulation and encourages overall heart vitality as part of a balanced wellness routine.

Benefits

Supports Healthy Heart Function

Provides essential nutrients to help maintain the strength and efficiency of the heart muscle.

Promotes Optimal Circulation

Helps maintain balanced blood flow to support oxygen transport and comfortable breathing.

Maintains Cardiac Vitality

Helps maintain energy levels and stamina, ensuring your dog stays active and engaged.

Soothes Airways & Throat

Helps maintain clear, comfortable breathing and eases occasional respiratory irritation.

Supports the Cardiovascular System

Provides a synergistic blend of antioxidants and amino acids to promote long-term vascular health.

Specifications

Standard Size 200g Tub / 90g Pouch



Product in Use

- **Less enthusiasm for exercise:** If your dog tires more quickly or prefers shorter walks.
- **Heavier breathing after activity:** Panting more than usual during light exercise or play.
- **Occasional restlessness at night:** Struggling to settle or frequently changing positions.
- **Hesitation before stairs or jumping:** A natural slowdown that may benefit from cardiac nutritional support.
- **Changes in extremity temperature:** Supporting healthy circulation helps maintain overall well-being.
- **General vitality:** Maintaining energy levels and engagement in daily activities.



Ingredients

Raw Ingredients:

Brewers Yeast, Limestone (Calcium Carbonate), DHA Gold® S-17 B, Crushed Hawthorn Leaf, Astragalus, Panax Ginseng Root, Schisandra Chinensis, Lycium Ruthenicum, Fritillaria cirrhosa, Reishi Mushroom.

Nutritional Additives per kg:

L-Carnitine 107,143mg, Taurine (3a370) 35,714mg, Vitamin E (all rac Alpha tocopheryl) (3a700i) 35,714mg.

Dosage Guide

Feeding Guide:

1 scoop serve 5 kg of dog body weight. Mix the recommended amount with your dog's wet or dry food daily in the morning or evening. Always ensure fresh drinking water is available.

LitPet Flexiguard Powder (For Cats and Dogs)

Made in the UK 100% Natural & Sustainable Ingredients
Advanced Joint Support Formula with Patented Xelflex®

LitPet FlexiGuard is a highly palatable and advanced powder formula designed to support the musculoskeletal health and mobility of cats and dogs. Each gram features 60mg of Xelflex®, a patented French milk protein clinically backed to support joint comfort and flexibility. By combining high-purity Glucosamine, Chondroitin, and MSM with traditional botanical extracts like Boswellia and Turmeric, FlexiGuard provides a comprehensive nutritional foundation to support the natural maintenance of joints and cartilage.

Benefits

Supports Cartilage Maintenance

Provides the essential building blocks (Glucosamine & Chondroitin) to help maintain the structural integrity of cartilage and synovial fluid.

Promotes Joint Comfort & Flexibility

Features patented Xelflex® to help maintain a wide range of motion and support overall joint comfort.

Helps Maintain a Healthy Inflammatory Response

Utilizes the natural properties of Boswellia and Turmeric to support the body's natural response to activity-induced inflammation.

Supports Connective Tissue Integrity

Provides MSM to support the strength and elasticity of tendons and ligaments.

Provides Antioxidant Protection

Helps protect joint cells from oxidative stress, ensuring long-term joint health and vitality.

Specifications

Standard Size 90g/pouch



Product in Use

- Senior pets require daily care to maintain joint mobility and comfort.
- Active pets need nutritional support for joint resilience.
- Pets exhibit signs of stiffness or reduced enthusiasm for exercise.
- Nutritional support for pets during recovery from activity or joint procedures.



Ingredients

Raw Ingredients:

Glucosamine Hydrochloride, Chondroitin Sulfate, Methylsulfonylmethane (MSM), Hydrolyzed Collagen (Xelflex®), Boswellia Serrata Extract, Turmeric Extract, Brewer's Yeast.

Nutritional Additives per kg:

Taurine (3a370): 50,000 mg, Vitamin E (3a700): 10,000 mg (as all-rac-alpha-tocopheryl acetate).

Sensory Additives:

Yucca Schidigera Extract: 25,000 mg.

Technological Additives:

Tocopherol extracts from vegetable oils (1b306(i)): 10,000 mg.

Dosage Guide

Feeding Guide:

1 scoop serve 5 kg of the pet's body weight. Mix the recommended amount with your pet's wet or dry food daily in the morning or evening. Always ensure fresh drinking water is available.

LitPet Pawsitive Powder (For Dogs)

Made in the UK **100% Natural & Sustainable Ingredients**
Advanced Calming and Stress Relief for Dogs

Benefits

Promotes Relaxation Without Drowsiness

Provides a synergistic blend of 75mg Lactium®, a natural protein from milk, to help pets maintain a calm state while staying alert and engaged.

Supports Balanced Behavior:

Helps manage signs of environmental stress and promotes emotional stability during changes in routine or surroundings.

Maintains Nervous System Health

Enriched with Magnesium and B-Vitamin complex to support healthy nerve function and promote resilience against daily stressors.

Provides Soothing Botanical Support

Features Valerian and Chamomile extracts to offer natural, gentle support for a settled, peaceful demeanor.

Promotes Restful Comfort

Helps soothe occasional restlessness and supports a natural, deep sleep cycle for better overall vitality.



Product in Use

- **Environmental Transitions:** Helps pets adjust to new homes, new family members, or multi-pet household dynamics.
- **Acute Stress Support:** Promotes calm during vet visits, grooming, travel, or loud events like fireworks and thunderstorms.
- **Separation Support:** Provides nutritional comfort for pets that benefit from emotional stabilization when left alone.
- **Behavioral Training:** Supports focus and a balanced mood during socialization and positive reinforcement training.

Specifications

Standard Size 200g Tub / 90g Pouch



Ingredients

Raw Ingredients:

Brewers Yeast, Calcium Carbonate (Limestone), Calcium Caseinate, Crushed Valerian Root, DHA Gold S-17 B, Crushed Chamomile Flower, Crushed Rhodiola Rosea.

Nutritional Additives per kg:

L-Tryptophan (3c440) 186,916mg, Vitamin B12(3a387) 467mg, Taurine (3a370) 23,364mg, Thiamine HCl (Vitamin B1) 4,673mg, Pyridoxine HCl (Vitamin B6) (3a831) 4,673mg.

Dosage Guide

Feeding Guide:

1 scoop serve 5 kg of dog body weight. Mix the recommended amount with your dog's wet or dry food daily in the morning or evening. Always ensure fresh drinking water is available. For predictable stressful events (e.g., travel), administer 1-2 hours beforehand for optimal support.

LitPet Body Balance Powder (For Dogs)

Made in the UK 100% Natural & Sustainable Ingredients

Advanced Nutritional Support for Healthy Metabolism & Optimal Body Condition

LitPet Body Balance is an advanced formula designed to help maintain healthy glucose metabolism and support weight management in dogs of all life stages. It is particularly beneficial for dogs requiring support for a healthy body condition, helping to stabilize energy levels and support natural fat metabolism. Made with a powerful blend of botanicals, prebiotics, and probiotics, it helps promote metabolic efficiency and support vitality when used as part of a balanced diet.

Benefits

Supports Healthy Glucose Metabolism

Helps maintain balanced blood sugar levels already within the normal range and promotes healthy energy use.

Promotes Weight Management

Helps maintain a healthy body condition through daily metabolic support.

Supports Metabolic Harmony

Helps maintain systemic balance for dogs with specific nutritional requirements.

Provides Antioxidant Support

Provides plant-based antioxidants to help protect cells from oxidative damage, promoting long-term vitality and longevity.

Encourages Digestive Wellness

Provides prebiotics and probiotics to support a healthy gut microbiome and nutrient absorption.



Product in Use

- Supports dogs requiring daily glucose-level management.
- Promotes wellness in dogs that need support for a healthy weight and an active metabolism.
- Provides essential metabolic and antioxidant support for senior dogs.
- Helps maintain internal equilibrium in dogs prone to metabolic imbalances.

Specifications

Standard Size 200g tub



Ingredients

Raw Ingredients:

Brewers Yeast, Chicory Root, Green Tea Leaf Powder (*Camellia sinensis*), Calcined Magnesite (*Magnesium Oxide*), DHA Gold, L-Phenylalanine, Mulberry Leaf Powder (*Morus*), Reishi Mushroom Powder (*Ganoderma lucidum*), Kudzu Root Powder (*Pueraria montana*), Balloon Flower Powder (*Platycodon grandiflorus*), Wolfberry Fruit Powder (*Lycium*).

Nutritional Additives per kg:

L-Taurine (3a370) 103,306 mg, L-Carnitine(3a910) 82,645 mg, Zinc (as Zinc chelate of glycine hydrate) (3b607) 12,397mg, Vitamin E(3a700i) 8,265mg.

Zotechnical Additives per kg:

Bacillus velezensis 90 BN CFU.

Dosage Guide

Feeding Guide:

1 scoop serve 5 kg of dog body weight. Always ensure fresh drinking water is available. Suitable for dogs of all ages and breeds.

LitPet ImmunoPro Powder (For Dogs)

Made in the UK 100% Natural & Sustainable Ingredients
Oriental Wisdom Meets Modern Science for Immunity and Digestion Support

LitPet ImmunoPro is a premium, lactose-free formula that bridges the gap between traditional herbal wisdom and modern immunology. Centered on the "Chinese Herbal Core" of Ganoderma lucidum (Reishi) and Panax ginseng, this blend is designed to support robust gut health and promote natural resilience. Enriched with Bovine Colostrum (IgG), it helps maintain your pet's natural defenses while nourishing the body to promote lifelong vitality.

Benefits

Supports Natural Immune Defenses

Provides immunoglobulins (IgG) and adaptogenic herbs to help maintain a strong and active immune system.

Promotes Digestive Wellness

Helps maintain a balanced gut microbiome and supports optimal gastrointestinal function for better nutrient absorption.

Helps Maintain Vitality & Energy

Features Panax ginseng to promote healthy metabolism and support daily energy levels in pets of all ages.

Provides Antioxidant Protection

Rich in natural antioxidants to help protect cells from oxidative stress and support healthy cellular aging.

Supports Healthy Circulation

Helps maintain balanced blood flow to promote systemic health and overall physical well-being.



Product in Use

- Supports pets that require daily immune system maintenance.
- Promotes wellness in senior pets facing age-related vitality decline.
- Provides essential nutritional support for nursing mothers to help maintain their own health and vitality.
- Helps maintain physical resilience in pets during seasonal changes or environmental stress.

Specifications

Standard Size 200g Tub / 90g Pouch



Ingredients

Raw Ingredients:

Brewers Yeast, Limestone (Calcium Carbonate), Bovine Colostrum (from Milk), Wild Yam Rhizome, Sunflower Lecithin, Lycium Ruthenicum, Rehmannia Glutinosa, Reishi Mushroom, Panax Ginseng Root.

Nutritional Additives per kg:

Vitamin B2 (3a825i/3a825ii) 1,389mg, Vitamin B3 (3a315) 1,389mg, Calcium Pantothenate (3a841) 1,389mg, Vitamin B6 (3a831) 1,389mg, Vitamin B1 1,389mg.

Dosage Guide

Feeding Guide:

Half (0.5) scoops serve 5 kg of dog body weight. Always ensure fresh drinking water is available. Suitable for dogs of all ages and breeds.

The Development and Scientific Basis of LitPet Products

Formulations Driven by Chinese Herbs and Science

Every LitPet product is scientifically researched and validated by veterinary medicine to ensure the safety and effectiveness of its ingredients. Our R&D team consists of registered veterinarians from the UK and Hong Kong, animal nutrition experts, and food scientists, all focused on providing the most suitable nutritional supplements for pets.



Four Core Principles of LitPet Product Development

Scientific Validation

All ingredients are supported by veterinary research, ensuring proven efficacy.

Safety and Reliability

Manufactured in strict compliance with AAFCO (Association of American Feed Control Officials), FEDIAF (European Pet Food Industry Federation), and VMD (Veterinary Medicines Directorate, UK) standards in UK factories.

Some products have received the "Made in Hong Kong" certification from the Hong Kong government and the SGS & QPP (Quality Pet Protection) certification.

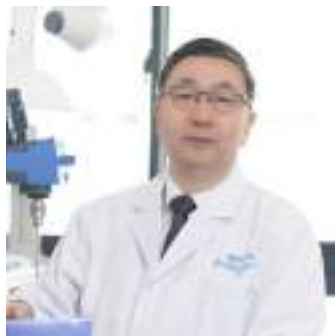
Freeze-dried series products are developed in accordance with the industry standards for pet nutritional supplements (soft granules) in China.

Precise Formulation

Customized nutritional supplementation tailored to the different sizes, ages, and health conditions of cats and dogs to meet individualized needs.

High Palatability

Made with natural ingredients to ensure pets enjoy eating, preventing picky eating issues.



All ingredients undergo the following strict testing processes

Raw Material Quality Testing

Ensures no heavy metals, pesticide residues, or harmful chemicals.

Stability Testing

Confirms the product maintains its activity and efficacy throughout its shelf life.

Palatability Testing

Ensures pets are willing to consume the product, improving compliance.



Strict Manufacturing Standards

GMP (Good Manufacturing Practices)

FDA Registered (Certified by the U.S. Food and Drug Administration)

ISO 22000 (Food Safety Management System)

Ethical Certification

Halal Certification

Six-Steps Quality Control

Raw Material Selection

All ingredients are sourced from certified suppliers to ensure purity and safety.

Production Process Control

The entire production process adheres to European pet nutrition standards, minimizing contamination and cross-contamination risks.

Active Ingredient Testing

Ensures the active ingredient content in each batch meets the labeled levels.

Microbial Testing

Prevents contamination by mold, bacteria, Salmonella, and E. coli.

Final Product Stability Testing

Tests the stability of the product under various storage conditions to ensure long-lasting efficacy.

Compliant with International Standards

All products comply with pet nutritional supplement standards in the United States, the United Kingdom, and the European Union, ensuring they are safe for long-term use.

(For specific SGS test reports, efficacy certification reports, or academic journal articles for each product, please consult the relevant market representative.)



AAFCO
Association of American Feed Control Officials



Ingredients Excluded from LitPet Products

- Artificial coloring or fragrances
- Artificial preservatives
- Artificial flavor enhancers
- Genetically modified ingredients
- Gluten or lactose (suitable for sensitive pets)

Veterinarian-Recommended and Trusted

LitPet products are recommended by many veterinary clinics in the UK and Hong Kong. Backed by scientific formulations and high-quality standards, LitPet has earned the trust and support of pet owners worldwide.



Legal and Warranty Information

Return & Warranty Policy

LitPet is committed to delivering premium-quality pet nutrition with peace of mind for pet parents. That's why we offer a 30-day satisfaction guarantee on all products purchased through official channels.

You may request a return within 30 days of purchase if:

- You are not satisfied with the product or your pet does not respond well to it.
- The product is returned in its original packaging, with no more than 30% used.
- A valid proof of purchase is provided (e.g., order number, receipt), along with a brief explanation of the return reason.

Product Warranty Terms

LitPet is committed to providing high-quality pet nutritional products. We guarantee that all products comply with the relevant standards and regulations of the country or region where they are produced and that there are no quality defects under normal use conditions.

● This warranty covers:

This warranty applies only to product quality issues arising from normal use.

The warranty period is 12 months from the date of purchase.

If the product is damaged or has quality issues caused by non-human factors during the warranty period, you may request a free replacement or return with valid proof of purchase.

Exclusions from Return & Warranty

● Exclusions include:

Damage caused by improper use or storage not in accordance with the product instructions.

Damage resulting from accidents, misuse, abuse, natural disasters, unauthorized modifications, or other abnormal usage conditions.



Legal Disclaimer

LitPet, to the fullest extent permitted by law, makes no explicit or implicit guarantees regarding the accuracy or completeness of the content in this product manual. Users of the product are responsible for ensuring they have carefully read and understood the usage instructions before using the product.



Privacy Policy

LitPet values your privacy. We are committed to protecting the security and confidentiality of the personal information you provide to us. The collection, use, storage, and transmission of user information comply with applicable laws and regulations.

Key Points of the Privacy Policy

● Information Collection

We collect only the necessary personal information to provide and improve our products and services.

● Information Use

Your information will be used for order processing, customer service, product improvement, and promotional notifications. We will not share your personal information with third parties without your consent.

● Information Security

We employ various security measures to protect your personal information from unauthorized access, use, or disclosure.

● Access and Control

You can contact us at any time to review, correct, or delete the personal information we hold about you.

(For more detailed information about our privacy policy, please visit our official website or contact our customer service department directly.)

Disclaimer

LitPet is not responsible for any direct, indirect, incidental, special, or consequential damages arising from the improper use of the product.

The information in this manual is subject to change without prior notice. LitPet reserves the right to make improvements to product specifications and designs without prior notification.

Customer Service

Contact Us

Website: www.litpet.co
WhatsApp: +852 6892 2488/ +44 7723252060
Instagram: @LitPet_HK @LitPet_UK
Threads: @LitPet_HK @LitPet_UK
TikTok: @LitPet_UK
WeChat: LitPet_Healthy

Service Time

Working Hours:

Monday to Friday, 9:00 AM - 5:00 PM

Off Hours:

Not available on weekends and public holidays

(In case of special circumstances, announcements will be made in advance on the official platform.)

Complaints and Suggestions

We highly value your feedback and are committed to continuously improving our products and service quality. If you have any complaints or suggestions, please contact us through the following channels:

Email

contactus@litpet.org

Please specify the issue in detail in your email and attach your proof of purchase and relevant information (e.g., product batch number, purchase date) to help us process your request quickly.

Customer Service Hotline

+44 07723 252060 (UK)

Call our hotline during working hours, and our representatives will assist you in resolving your issues.

Online Feedback

Visit our official website, navigate to the "Contact Us" or "Feedback" page, and submit your comments or concerns. We will respond to you within 2-3 business days.

Thank you for your support and trust in **LitPet!**
We are dedicated to serving you wholeheartedly.



LITpet®

www.litpet.co



Download
brandbook



Download
Product Brochure