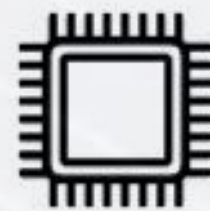




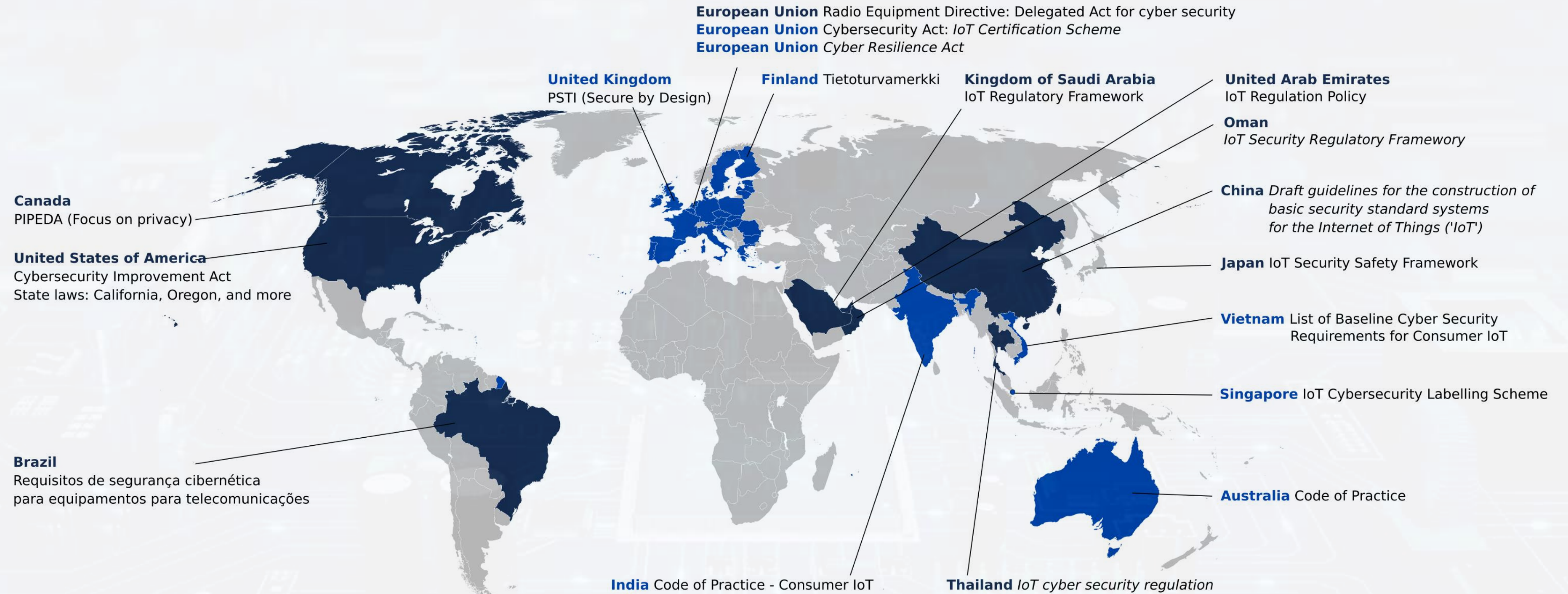
IoT Cyber Security Excellence

for

Edge · Mobile · Cloud



IoT Cyber Security Regulations



UK is a subset of ETSI **EN303645**. UK's PSTI Bill is active since **2024 April!**

Deadline for being %100 compatible to RED DA(EN18031) for all IoT device manufacturers for **EU** is **2025 August!**

Cyber Resilience Act(CRA) will be mandatory for **EU** after **2027 December!**

▪ CyberWhiz Embedded

Hardware & Software Security Solutions



Secure **Bluetooth&Wi-Fi Combo Module** with **ESP32** and **ECC608 HSM**

Compliance with all IoT cyber security **REGULATIONS**

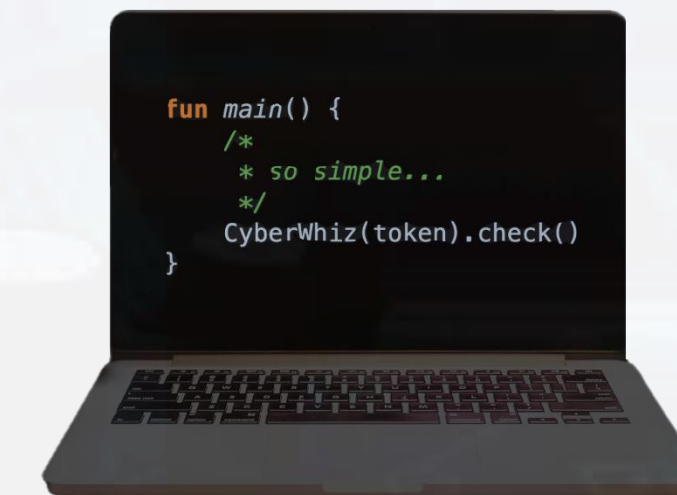
Radio Equipment Directive(**RED DA**) & Cyber Resilience Act(**CRA**) & **ETSI EN303465**

Low price and **high quality** driven by high volume usage

Microchip Authorized Design Partner for embedded security



Software Only Security Solutions



We can secure any MCU/MPU and any IoT device

Compliance to **RED DA** & **CRA** & **UNECE R155&156**

ETSI EN303645 cannot be satisfied with SW only security solutions

We can secure **Bare Metal**, **Free RTOS**, **Embedded Linux/Android OS**

IoT Security Championship Award in 2018 due to our Bluetooth TLS solution



▪ CyberWhiz Mobile

Mobile Application Security



Security library for any **iOS&Android** mobile application

Integration lasts only **1 min** with **one line of code**

Compatible with Native **iOS&Android**, **Flutter** or **React Native** based apps

Make application 100% compliant to **OWASP Mobile Top10**

< **CRA will consider 'Digital Elements' like mobile application** >

Key Features



Root/Jailbreak Detection, **Emulator** Detection

Hooking Detection, **Malware** Detection, **Proxy** Detection

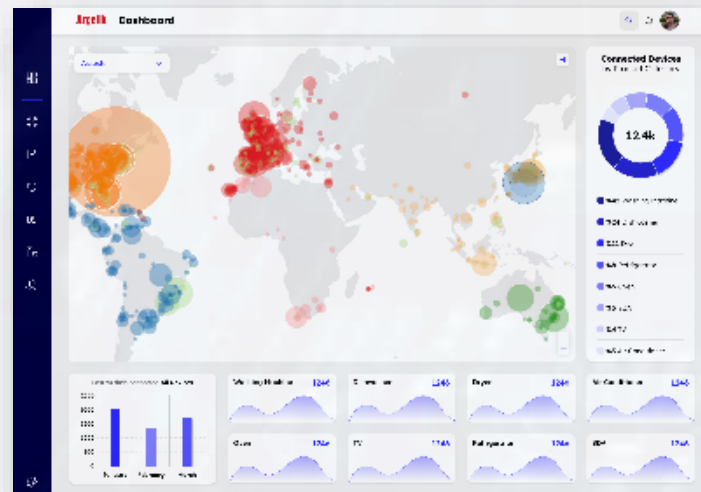
MITM* Detection, **Unsecure Network** Detection, **Obfuscation**

Periodic Penetration Test support by **RED TEAM**

< **POST QUANTUM CRYPTOGRAPHY** Algorithms Integration >

▪ CyberWhiz Defence Center

24/7 Security Monitoring



Monitor IoT devices and mobile applications seamlessly

Real-time monitoring for **smart home** devices, **EV Chargers**, **Vehicles**

Provides the capabilities of **VSOC (Vehicle Security Operations Center)**

AI based defence center that can detect **cyber anomalies** instantly

< **Cyber Security Monitoring is MANDATORY** under RED DA and CRA >

Incident Response Service



Continuous analysis of **cyber logs** ensures proactive threat detection

Instant attack detection for IoT devices and/or mobile applications

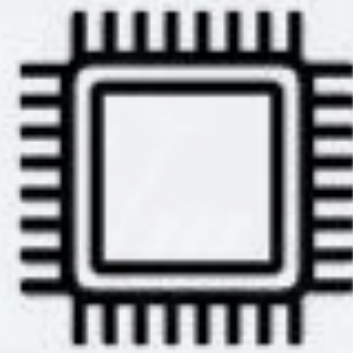
Automated management of **Vulnerability Disclosure Policies**

Incident Response Services powered by our expert **PURPLE TEAM**

< **Full compliance with CRA and UNECE R155&R156 regulations** >

▪ CyberWhiz Red Team Services

IoT Penetration Testing



Embedded Systems penetration test for any MCU/MPU

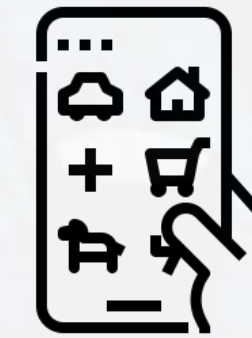
Any wired or wireless communication channel penetration test

UART, SPI, I2C, USB, ETHERNET, CAN BUS, UDS

Bluetooth, Wi-Fi, Lora, Zigbee, 5G

< Regulations require periodic penetration tests >

Mobile & Cloud Penetration Testing



End-to-End vulnerability analysis

Mobile application reverse engineering

Cloud security assessment

Cloud penetration test for any CSP* like AWS, Azure, Google

< CRA includes mobile application and cloud >

▪ CyberWhiz Purple Team Services

RED DA and CRA



EU Radio Equipment Directive and Cyber Resilience Act

Compliance to every national & international IoT Security standards

UK **PSTI**, US Cyber Trust Mark, Singapore CSLS

ETSI EN303645, **EN18031**

< Consultancy for ALL IoT Security Regulations >

Automotive Cyber Security



ISO 21434: Cyber Security Management System (**CSMS**)

ISO 24089: Software Update Management System (**SUMS**)

UNECE **R155&156**

SBOM Management and **TARA*** Workshop and Trainings

< Holistic Automotive Cyber Security >

■ CyberWhiz Blue Team Services

Embedded Security



Embedded software security design for any type of MCU and MPU

Secure bootloader design and image-signing processes

Provisioning services and **SBOM** generation

Post Quantum Cryptography algorithm integration for secure boot and edge-to-cloud communication

Business Model: Per Product

Mobile Application Security



Mobile application security libraries for **Native** iOS&Android, **React Native**, **Flutter**

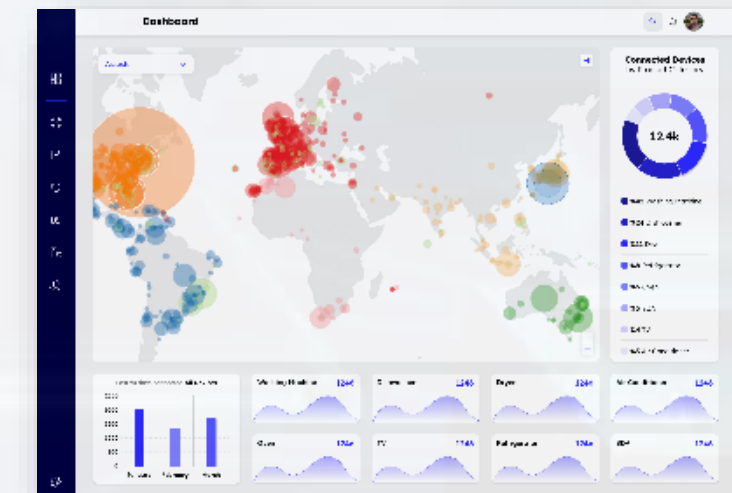
Secure code practices for **Kotlin**, **Go**, **Swift**

Bluetooth TLS Library for more secure BLE

Post Quantum Cryptography algorithm integration for mobile to cloud communication

Business Model: Annual Subscription

Cloud Security



Cloud security assessment and design for **AWS**, **Azure**, **Google** and others

IoT Cloud Services design with implementing security best practices

DevSecOps and **CI/CD** implementations

Post Quantum Cryptography algorithm integration to prevent «Harvest now, decrypt later» attacks

Business Model: Annual Subscription



IoT Cyber Security Excellence

for

Edge · Mobile · Cloud

