



KALANKAN

Who We Are

At KALANKAN, we are dedicated to precision and complexity of projects in aluminium die casting and machining.

Specializing in custom manufacturing, we deliver tailored solutions for small series.

Our Vision is to create relationships built on trust.

Driven by innovation and excellence we aim to grow continuously, striving to exceed our own achievements and to set new standards in our field with customer satisfaction being our primary goal. Our ambition to learn and evolve is what ensures we remain at the forefront of our field and emerge both as an employer and partner of choice in this industry.

Our History

2014



10 years

2024



Team of 2
1 office
Wi-Fi

Blood, sweat and tears



Team of 42 members
Production on 3.500 m²
Estimated Sales Revenue
8.200.000,00 Euro

What We Offer



Mold Design

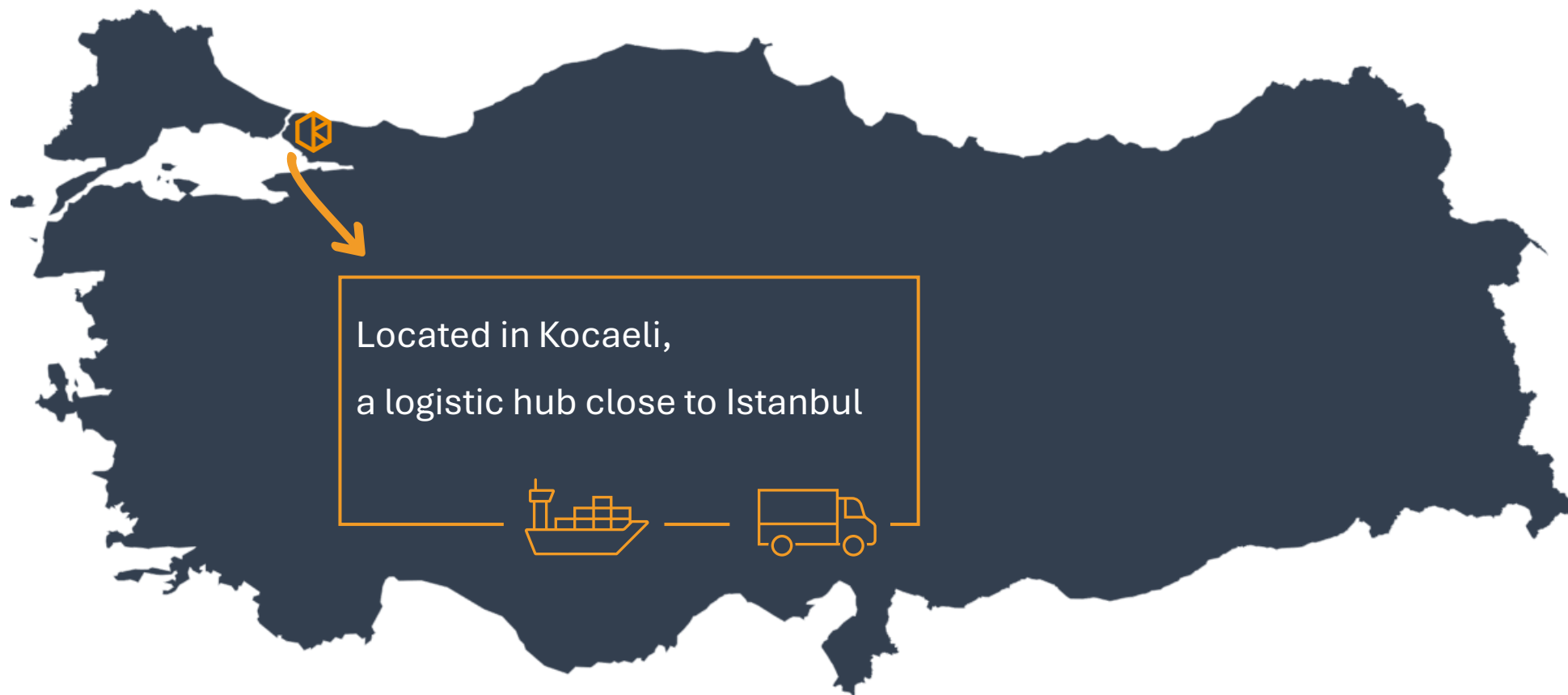
Tool Manufacturing

CNC Machining

Consulting



Where We Operate



Where We Ship



Local Networker



We work with up to 10 local partners to make sure we meet our customers needs for quality, quantity, costs and delivery time.



We focus on what we do best. All fixtures, special tools, and manufacturing concepts are designed by us.



We ensure that quality standards are met on-site and at our suppliers. To do so, we manage outsourced processes like our own.



In total we rely on 150 workers, 25 die-casting presses (160 - 1,100 tons) and 15 CNC machining units.

Unique Selling Point

Customer Orientation

State of the Art

Efficiency

Interculturality

Unique Selling Point

We are
Customer Oriented

To meet your expectations, we value your feedback and utilize it for self-reflection and improvement in every aspect of our business. We prioritize understanding your needs so that we can deliver creative solutions for any tight spot that arises in the process.

We are
State of the Art

To beat the challenges of a dynamic and competitive market, we invest in our team members by continuously providing trainings and coachings, enabling them to not just use technology, but to make it work for us the best way possible.

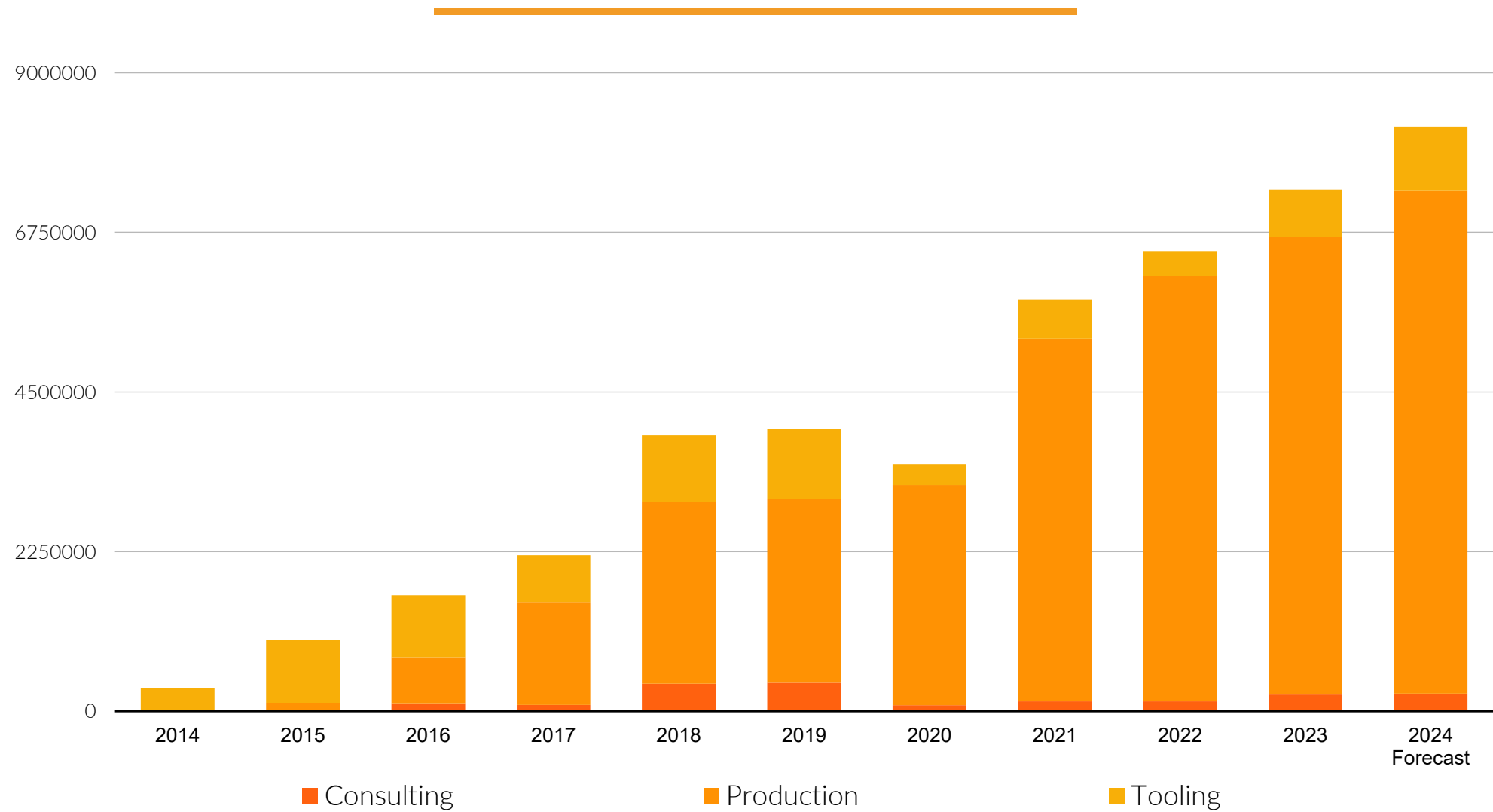
We are
Efficient

Our focus on efficiency extends to optimizing the entire supply chain, from process times to machining and professional tool management, ensuring an outstanding cost-performance ratio. This way we reduce our setup time from hours to minutes.

We are
Intercultural

Effective communication goes beyond language; we recognize that. Our leadership team and customer facing members boast extensive experience in European business standards what guarantees fluent communication and a profound comprehension of your needs.

Revenue



Machine Park



2x CNC Machining Center BROTHER S700X1 incl. NIKKEN Rotary Table
1x CNC Machining Center BROTHER S1000X1 incl. NIKKEN Rotary Table
1x CNC Machining Center BROTHER R650 incl. NIKKEN Rotary Table
3x CNC Machining Center FANUC ROBODRILL incl. FANUC Rotary Table
1x CNC Machining Center MAKINO Slim3n incl. NIKKEN Rotary Table
1x CNC Lathe with C – axis 5-inch incl. FANUC Loading Robot
2x CNC Lathe 8-inch incl. Gantry Loading System

Q-LAB



ZEISS 3D CMM G2 10/12/6 with 1.7 μm precision active head



Mitutoyo Surface Roughness Measuring Device



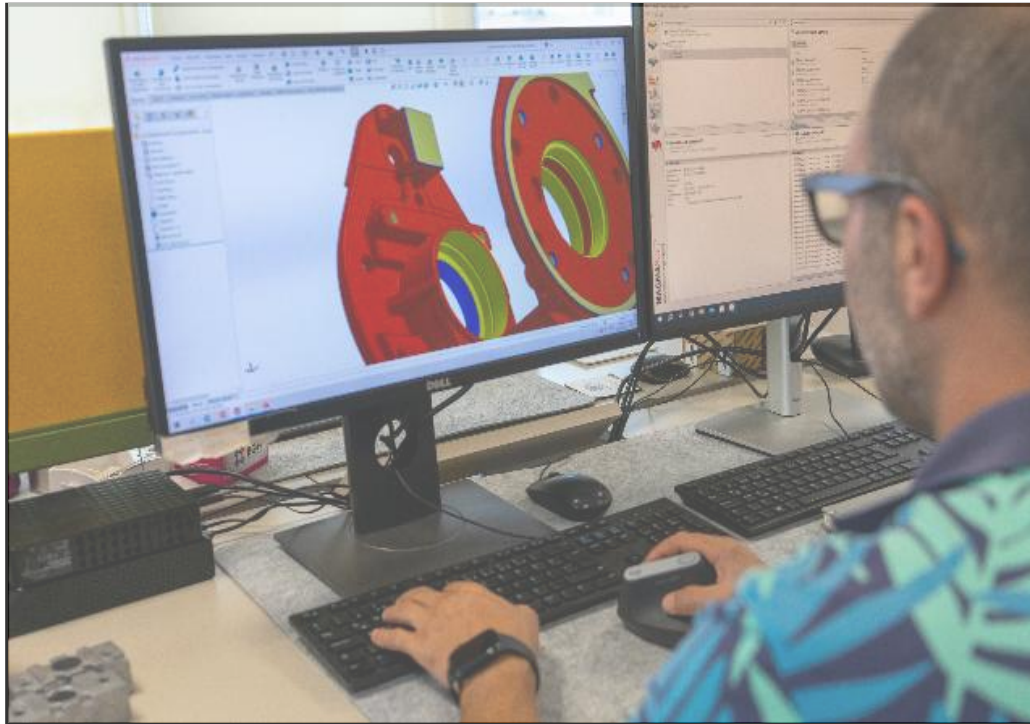
MahrSurf CD140 Contourgraph



Laser Scanner Creaform with Polyworks Software



Software



Hypermill

MagmaSoft Simulation

SAP Business One

Solidworks

Polyworks

NX – Siemens



Tool Management



Smart Tool Storage System



Nikken Elbo Controlli Presetter



Bilz Schrink Tool Holding Systems



Haimer Fine Balancing Machine



Quality Management

What we have done

ISO 9001:2015 certified
Valid until January 2026

Processes align with
ISO 16949

Regular PFMEA, APQP,
PPAP, SPC

Open to customer
audits any time



What we will do

ISO 14001
Environmental
Management System
by the beginning of
2025

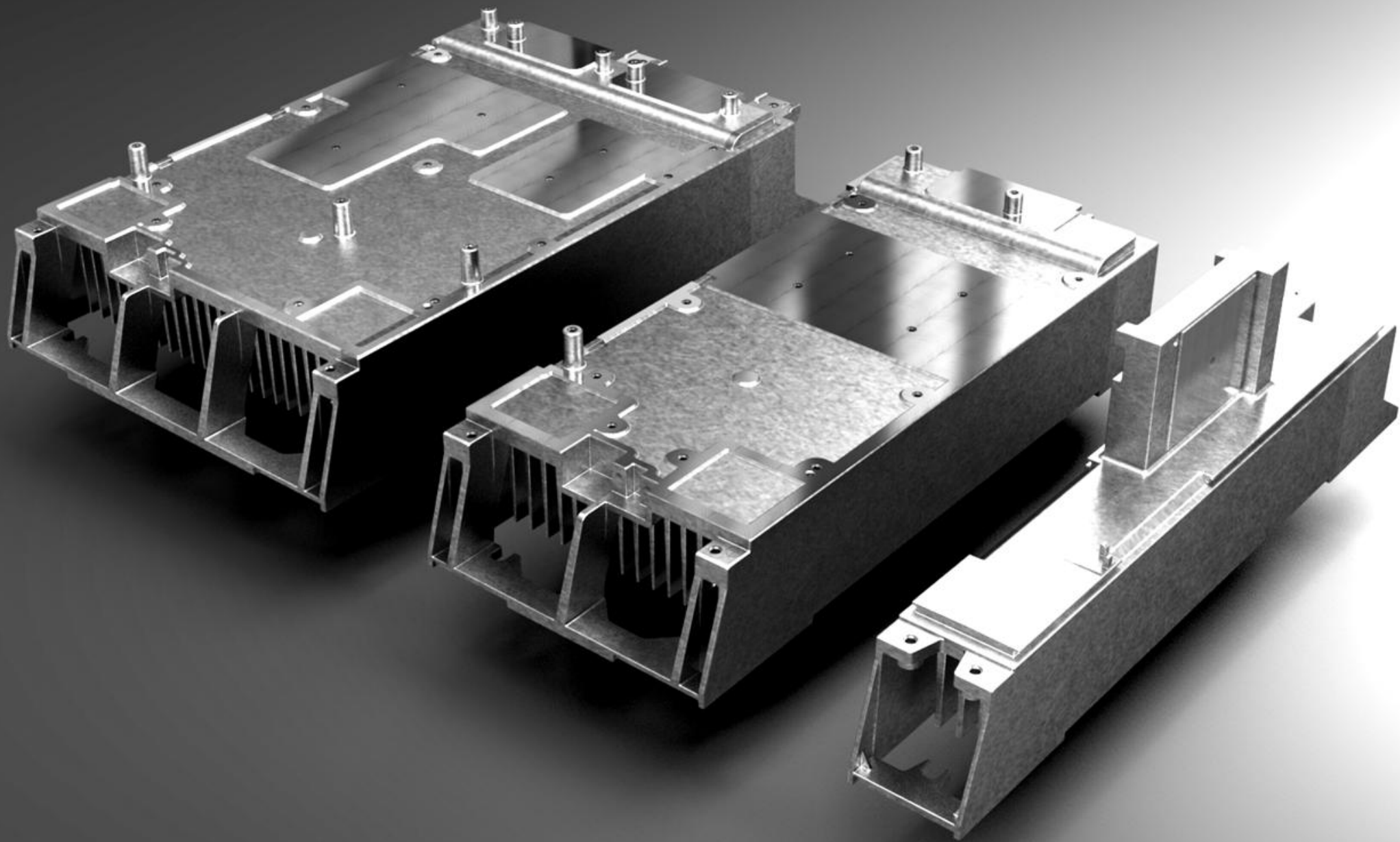
ISO 18001
Occupational Health
and Safety
Management System
by the beginning of
2025

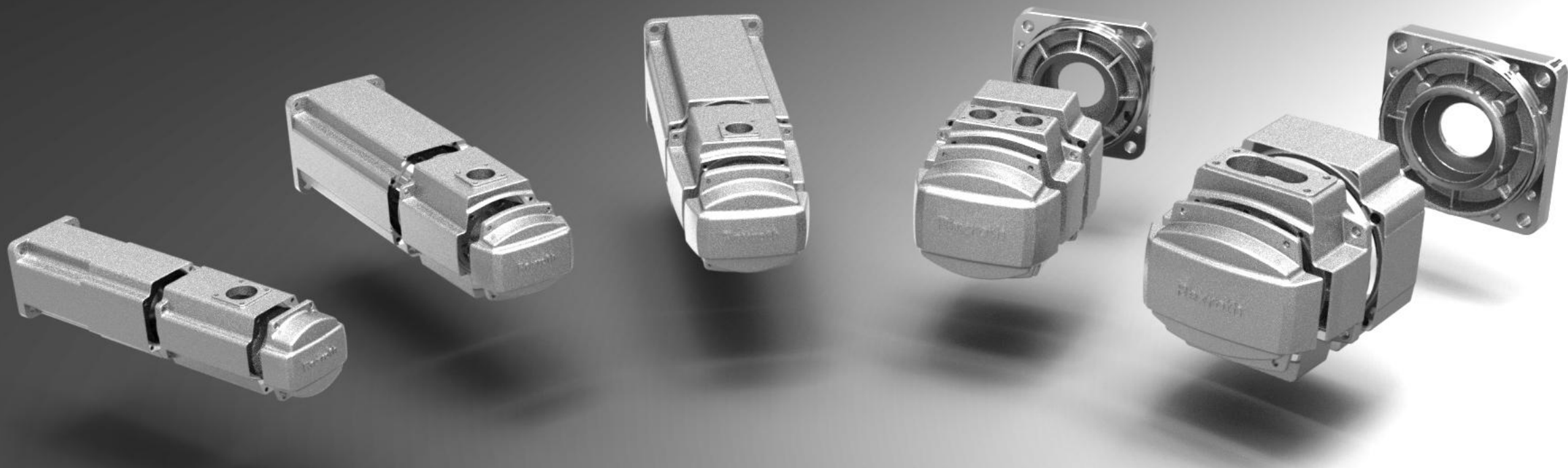
Quality Management

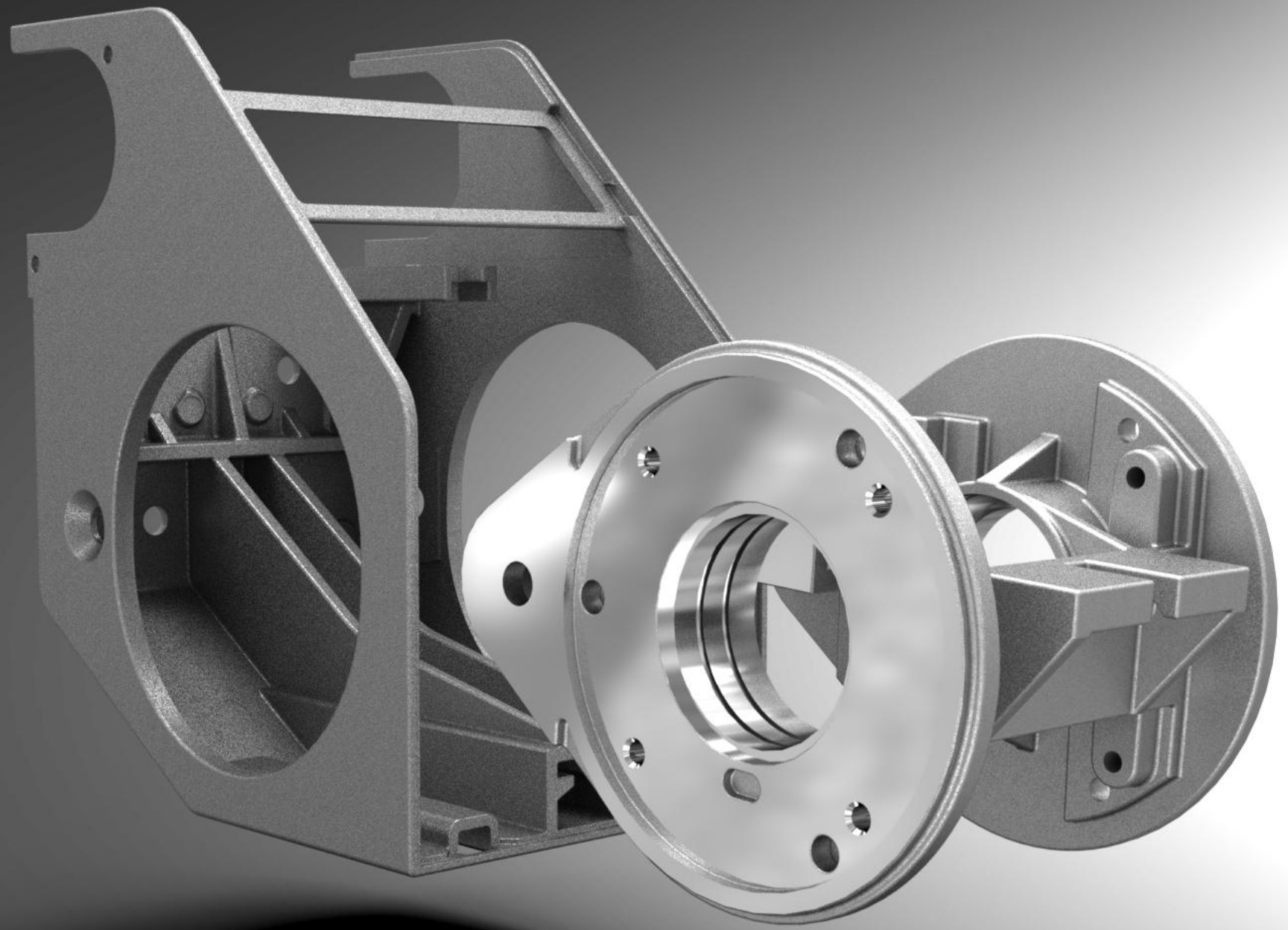


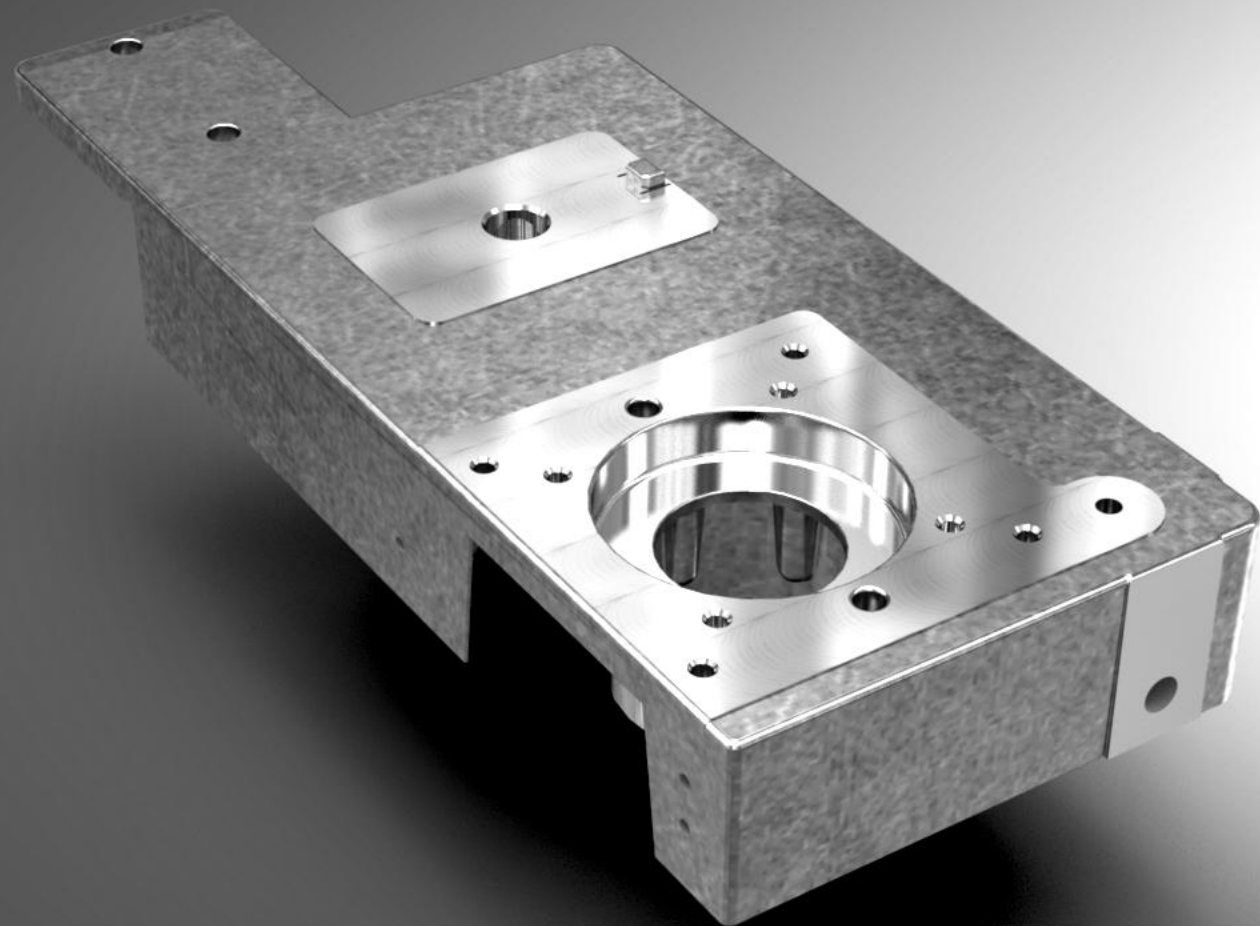
Our Products

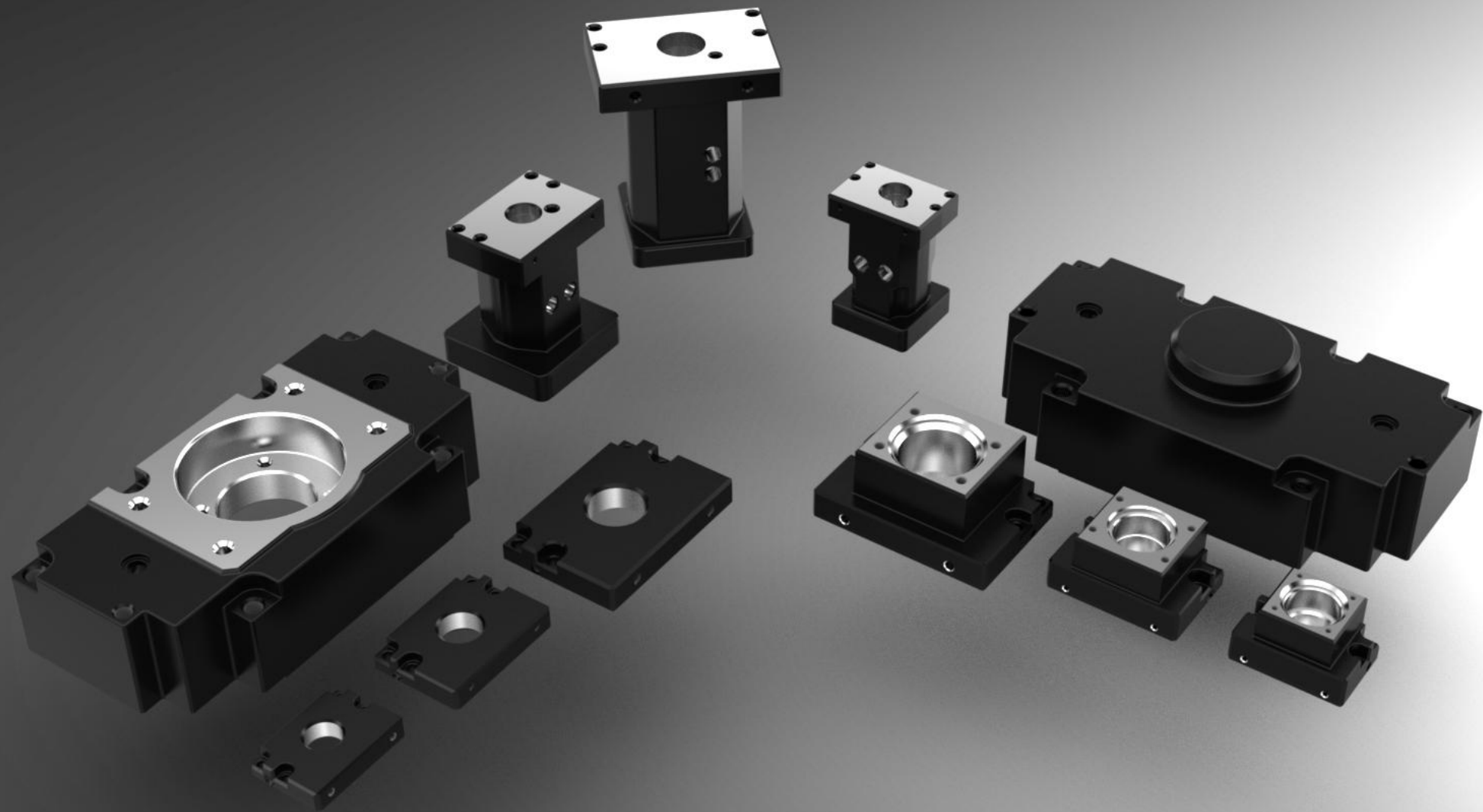


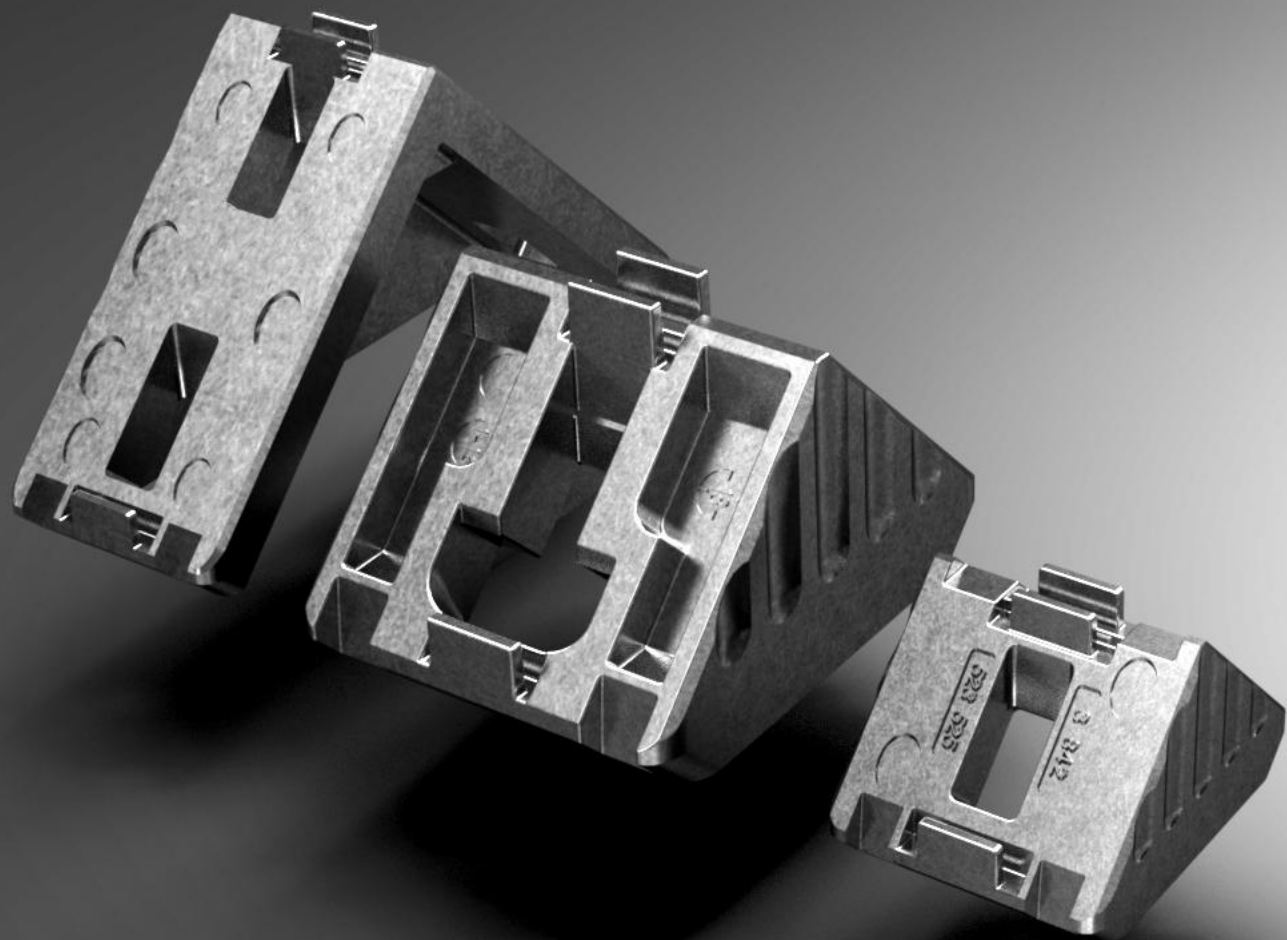


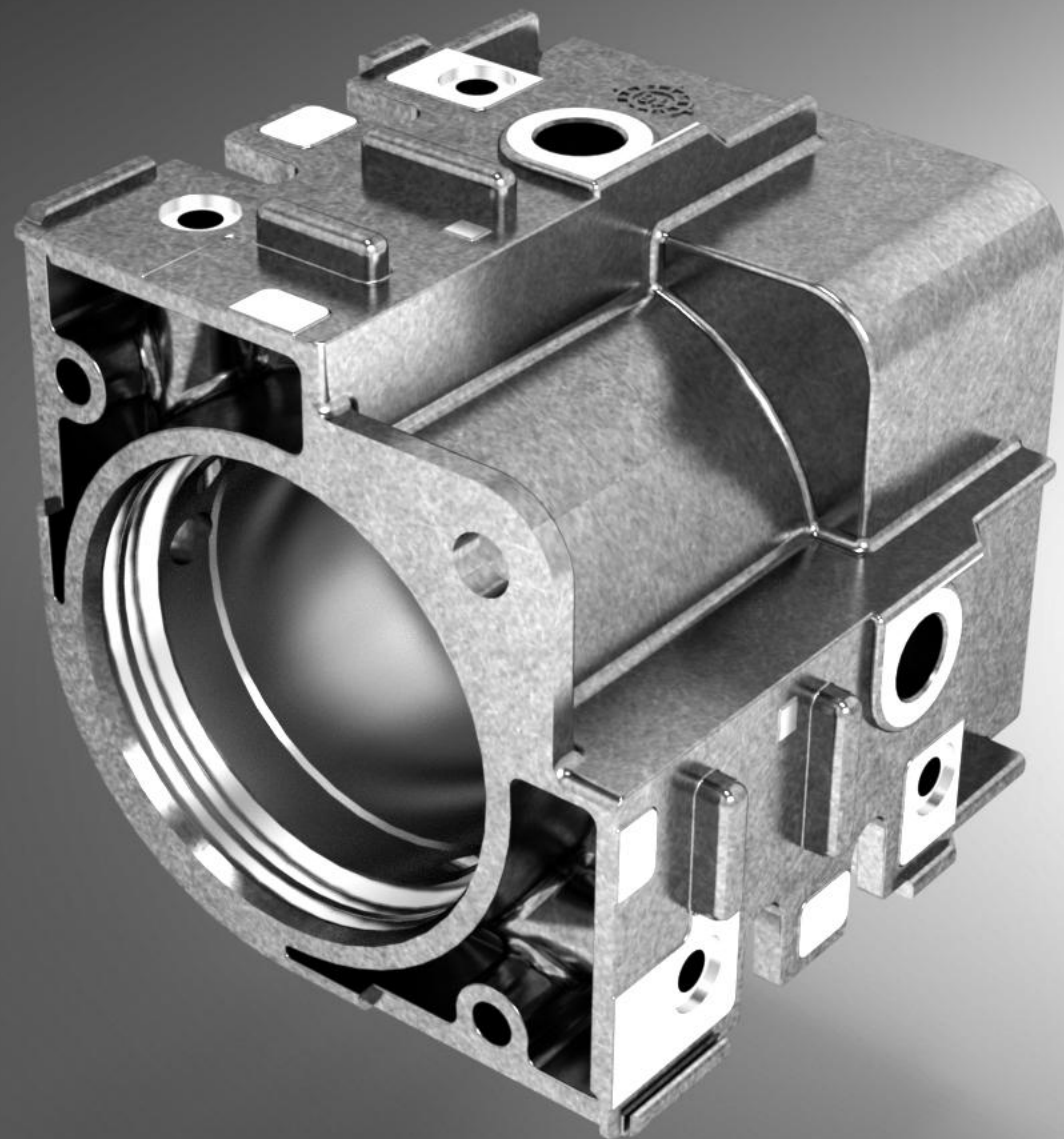


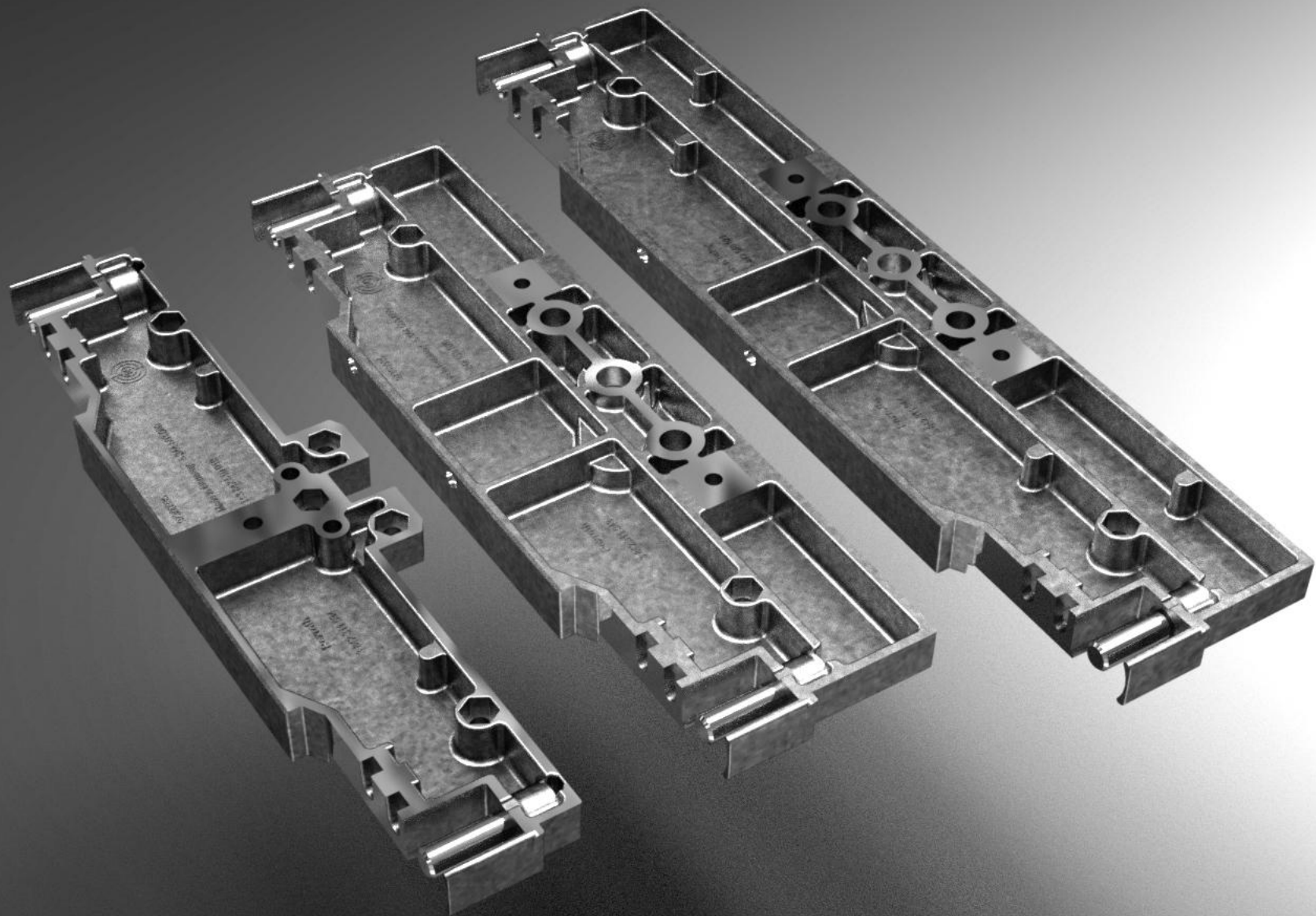












Our Partners

