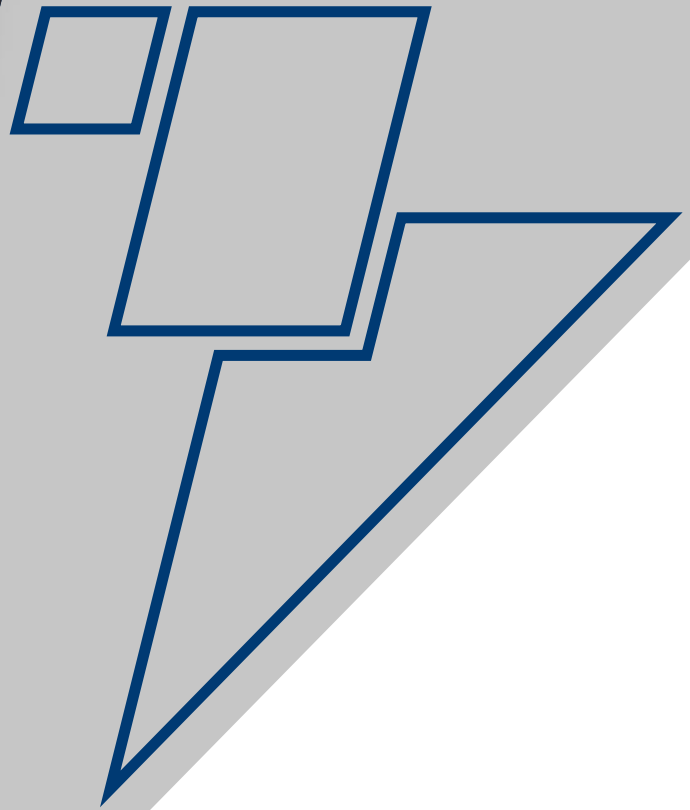




Innovation driven by values



ROBOPAC SYSTEMS

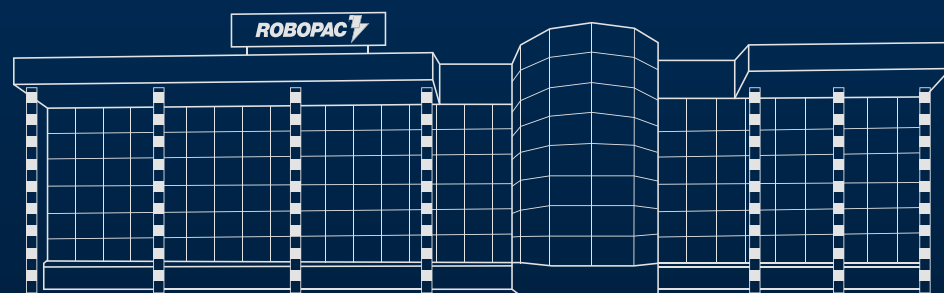
Wrapping Solutions





Robopac Systems is Aetna Group's Business Unit world leader in the production of systems and fully automatic stretch wrapping machines, customised according to the specific requirements of the customer, for stabilization of palletized loads.

The production of wrapping machines is based on technologies in rotating tables, rotating arms, rotating rings, robotic wrappers and banding machines



+490 M€
Sales Revenues



+ 11.000 Automatic
stretch wrappers
installed base



11 Subsidiaries



+2000 Employees



10 Production facilities in:
Italy, Germany, USA, China
and Brazil



+450 Global
sales network

The constant R&D activity and the utmost attention to customer satisfaction allow Robopac Systems to offer a wide range of wrapping machines with performances that meet the requirements of greater productivity and flexibility, while assuring quality and reliability, ensuring the best stabilization of the product and allowing savings in consumables. Aetna Group, is the world leader in the packaging sector, specialised in end-line solutions. It boasts approximately 2000 employees, 11 subsidiaries (France, UK, Germany, USA, Russia, China, Spain, Mexico, Pacific, South Africa and Brazil) and 10 production facilities in the Packaging Valley in Italy, in Germany, in USA and in Brazil. It operates in more than 120 countries and provides global customer service. Specifically, Group production ranges from semi-automatic wrapping machines with smart technology to innovative automatic solutions, from industrial wrapping machines to shrink wrapping machines and cartoning machines, to tailor made packaging solutions.



INDEX

ROBOPAC PLUS

ROTATING
TABLE
MACHINES



ROTOPLAT 3000 HD pag. 6

ROTATING
ARM
MACHINES



HELIX 1 EVO pag. 7
HELIX 3 EVO pag. 8
HELIX 4 EVO pag. 9
HELIX MAX pag. 10
HELIX 4/2 pag. 11

ROTATING
RING
MACHINES



GENESIS FUTURA 40 pag. 12
GENESIS FUTURA L - XL pag. 13
GENESIS FUTURA HS pag. 14
GENESIS FUTURA/2 pag. 15
GENESIS THUNDER HS pag. 16
GENESIS THUNDER/2 pag. 17

HORIZONTAL
BANDING
MACHINES



ROBOBAND pag. 18

ROBOTIC
WRAPPER

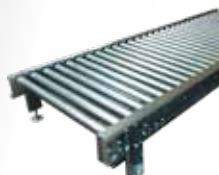


KRATOS pag. 19

MAIN
OPTIONALS

pag. 20-21

PALLET
HANDLING



PALLET HANDLING pag. 22

COMPLEMENTARY
MACHINES



LGV - PALLETIZERS pag. 23
PACKERS - SOTEMAPACK - MEYPACK

TECHNOLOGIES



CUBE TECHNOLOGY pag. 24
SUSTAINABLE PACKAGING pag. 25
TECHLAB pag. 26-27
RCONNECT pag. 28

SUPPORT



SERVICE SUPPORT pag. 29
ROBOPAC HMI pag. 30
TROUBLESHOOTING AND TPM pag. 31



CUBE TECHNOLOGY
is the Robopac patented pre-stretch technology that allows product stabilization and protection most effectively while using up to 50% less film than the traditional pre-stretch technology.



RCONNECT
is a tool for controlling and collecting data from installed machines to constant monitor their performances and anticipate possible failures to keep maximum line efficiency. All through a private connection without need of company LAN.



ROBOPAC SERVICE SUPPORT
is at customer's service 24 hours per day, 365 days per year! The service is covered by Robopac service offices worldwide during the day, based on different time zones.



The user friendly, smartphone like interface of Robopac's HMI has been designed to facilitate operators' usage by:

- Manual movements activated through 3D image icons
- Advanced troubleshooting
- Technical documentation on board
- Visual control of maintenance schedule



Robopac wrappers minimize the Total Cost of Ownership through the reduction of:

- operating costs
- consumables
- cost of damaged/unsaleable products



Robopac TPM READY means LESS IS MORE - Lower maintenance and higher productivity.

- Avoid production lines downtime
- Faster troubleshooting
- Visual control of machine status

ROTOPLAT 3000 HD

FULLY AUTOMATIC
ROTARY TABLE
WRAPPER

FULLY AUTOMATIC
ROTARY ARM WRAPPER
LOW SPEED

HELIX 1 EVO

OUTPUT CAPACITY
up to **50**
pallet/h



OUTPUT CAPACITY
up to **65**
pallet/h



BENEFITS

S-PATTERN

LOWER NECKDOWN,
MAXIMUM SAVINGS



MODULAR DESIGN

PREPARED FOR QUICK
UPGRADES SETUP



HMI

INTUITIVE
& EASY-TO-USE
INTERFACE



FAST INSTALLATION

PRE-ASSEMBLED,
READY-TO-GO FOR FAST
INSTALLATION & RAMP-UP



HEAVY DUTY CONSTRUCTION

HIGH OPERATING RELIABILITY
AND WORKING LIFE IN THE MOST
WEARING USE CONDITIONS



BENEFITS

S-PATTERN

LOWER NECKDOWN,
MAXIMUM SAVINGS



LOW TCO

REDUCED
TOTAL OPERATIVE COSTS



MODULAR DESIGN

PREPARED FOR QUICK
UPGRADES SETUP



QUICK AND FLEXIBLE SETUP

EASY AND INTUITIVE MACHINE SETTINGS,
FAST AND TOOL LESS SEALER PARTS
CHANGEVER



MAINTENANCE FRIENDLY

1-MINUTE WORN-OUT
PARTS REPLACEMENT,
MINIMIZED LUBE NEEDS



FAST INSTALLATION

PRE-ASSEMBLED,
READY-TO-GO FOR FAST
INSTALLATION & RAMP-UP



ROBOPAC
TECHNOLOGIES

CUBE
TECHNOLOGY

TPM
READY

Rconnect

LOAD SIZES

MIN
600 x 800 mm
24" x 32"

MAX
1000 x 1200 mm
40" x 48"

ROBOPAC
TECHNOLOGIES

CUBE
TECHNOLOGY

TPM
READY

Rconnect

EASY
LOCK

LOAD SIZES

MIN
400 x 600 mm
16" x 24"

MAX
1220 x 1220 mm
48" x 48"

L VERSION UP TO
1600 x 1600 mm
63" x 63"

XL VERSION UP TO
1900 x 1900 mm
75" x 75"

HELIX 3 EVO

FULLY AUTOMATIC
ROTARY ARM WRAPPER
MEDIUM SPEED

OUTPUT CAPACITY
up to **80**
pallet/h



FULLY AUTOMATIC
ROTARY ARM WRAPPER
HIGH SPEED

HELIX 4 EVO

OUTPUT CAPACITY
up to **90**
pallet/h



BENEFITS

S-PATTERN

LOWER NECKDOWN,
MAXIMUM SAVINGS



LOW TCO

REDUCED
TOTAL OPERATIVE COSTS



MODULAR DESIGN

PREPARED FOR QUICK
UPGRADES SETUP



QUICK AND FLEXIBLE SETUP

EASY AND INTUITIVE MACHINE SETTINGS,
FAST AND TOOL LESS SEALER PARTS
CHANGEVER



MAINTENANCE FRIENDLY

1-MINUTE WORN-OUT
PARTS REPLACEMENT,
MINIMIZED LUBE NEEDS



FAST INSTALLATION

PRE-ASSEMBLED,
READY-TO-GO FOR FAST
INSTALLATION & RAMP-UP



BENEFITS

S-PATTERN

LOWER NECKDOWN,
MAXIMUM SAVINGS



LOW TCO

REDUCED
TOTAL OPERATIVE COSTS



MODULAR DESIGN

PREPARED FOR QUICK
UPGRADES SETUP



QUICK AND FLEXIBLE SETUP

EASY AND INTUITIVE MACHINE SETTINGS,
FAST AND TOOL LESS SEALER PARTS
CHANGEVER



MAINTENANCE FRIENDLY

1-MINUTE WORN-OUT
PARTS REPLACEMENT,
MINIMIZED LUBE NEEDS



FAST INSTALLATION

PRE-ASSEMBLED,
READY-TO-GO FOR FAST
INSTALLATION & RAMP-UP



ROBOPAC
TECHNOLOGIES

CUBE
TECHNOLOGY

TPM
READY

Rconnect

EASY
LOCK

LOAD SIZES

MIN
400 x 600 mm
16" x 24"

MAX
1220 x 1220 mm
48" x 48"

L VERSION UP TO
1600 x 1600 mm
63" x 63"

XL VERSION UP TO
1900 x 1900 mm
75" x 75"

XXL VERSION UP TO
2500 x 2500 mm
98" x 98"

LOAD SIZES

MIN
400 x 600 mm
16" x 24"

MAX
1220 x 1220 mm
48" x 48"

L VERSION UP TO
1600 x 1600 mm
63" x 63"

XL VERSION UP TO
1900 x 1900 mm
75" x 75"

XXL VERSION UP TO
2500 x 2500 mm
118" x 118"

XXXL VERSION UP TO
3000 x 3000 mm
118" x 118"

HELIX MAX

FULLY AUTOMATIC
ROTARY ARM WRAPPER
2 REELS

FULLY AUTOMATIC
DOUBLE ROTARY
ARM WRAPPER

HELIX 4/2

OUTPUT CAPACITY
up to **105**
pallet/h



OUTPUT CAPACITY
up to **150**
pallet/h



BENEFITS

S-PATTERN

LOWER NECKDOWN,
MAXIMUM SAVINGS



LOW TCO

REDUCED
TOTAL OPERATIVE COSTS



FILM AUTO-RECOVERY



CAPABILITY TO AUTO-RECOVER
EVENTUAL FILM BREAKAGES

LESS FILM BREAKAGES

WRAPPING CYCLE
EXTREMELY RESISTANT
TO TEARING THANKS TO FILM FUSION



MAINTENANCE FRIENDLY

1-MINUTE WORN-OUT
PARTS REPLACEMENT,
MINIMIZED LUBE NEEDS



QUICK AND FLEXIBLE SETUP



EASY AND INTUITIVE MACHINE SETTINGS,
FAST AND TOOL LESS SEALER PARTS
CHANGEOVER

BENEFITS

S-PATTERN

LOWER NECKDOWN,
MAXIMUM SAVINGS



LOW TCO

REDUCED
TOTAL OPERATIVE COSTS



MODULAR DESIGN

PREPARED FOR QUICK
UPGRADES SETUP



QUICK AND FLEXIBLE SETUP

EASY AND INTUITIVE MACHINE SETTINGS,
FAST AND TOOL LESS SEALER PARTS
CHANGEOVER



MAINTENANCE FRIENDLY

1-MINUTE WORN-OUT
PARTS REPLACEMENT,
MINIMIZED LUBE NEEDS



FAST INSTALLATION

PRE-ASSEMBLED,
READY-TO-GO FOR FAST
INSTALLATION & RAMP-UP



ROBOPAC
TECHNOLOGIES



1m

LOAD SIZES

MIN
400 x 600 mm
16" x 24"

MAX
1220 x 1220 mm
48" x 48"

LOAD SIZES

MIN
400 x 600 mm
16" x 24"

MAX
1000 x 1350 mm
40" x 54"

L VERSION UP TO
1600 x 1600 mm
63" x 63"

XL VERSION UP TO
1800 x 1800 mm
70" x 70"

XXL VERSION UP TO
2200 x 2200 mm
87" x 87"

GENESIS FUTURA 40

FULLY AUTOMATIC
ROTARY RING
WRAPPER

FULLY AUTOMATIC
ROTARY RING WRAPPER
BIG SIZED PALLETS

GENESIS FUTURA L - XL

OUTPUT CAPACITY
up to **95**
pallet/h



OUTPUT CAPACITY
up to **80** **70**
pallet/h



BENEFITS

S-PATTERN

LOWER NECKDOWN,
MAXIMUM SAVINGS



LOW TCO

REDUCED
TOTAL OPERATIVE COSTS



DYNAMIC PARACHUTE

DOUBLE REDUNDANT AND
CONTINUOUS LOCKING MECHANISM
FOR MAXIMUM OPERATOR SAFETY

STOP

MODULAR DESIGN

PREPARED FOR QUICK
UPGRADES SETUP



QUICK AND FLEXIBLE SETUP

EASY AND INTUITIVE MACHINE
SETTINGS, FAST PARTS CHANGEOVER



HMI

INTUITIVE
& EASY-TO-USE
INTERFACE



BENEFITS

S-PATTERN

LOWER NECKDOWN,
MAXIMUM SAVINGS



LOW TCO

REDUCED
TOTAL OPERATIVE COSTS



DYNAMIC PARACHUTE

DOUBLE REDUNDANT AND
CONTINUOUS LOCKING MECHANISM
FOR MAXIMUM OPERATOR SAFETY

STOP

MODULAR DESIGN

PREPARED FOR QUICK
UPGRADES SETUP



QUICK AND FLEXIBLE SETUP

EASY AND INTUITIVE MACHINE
SETTINGS, FAST PARTS CHANGEOVER



HMI

INTUITIVE
& EASY-TO-USE
INTERFACE



ROBOPAC
TECHNOLOGIES



ROBOPAC
TECHNOLOGIES



LOAD SIZES

MIN
500 x 600 mm
20" x 24"

MAX
1200 x 1200 mm
48" x 48"

LOAD SIZES

MIN
500 x 600 mm
20" x 24"

L VERSION UP TO
1450 x 1450 mm
58" x 58"

XL VERSION UP TO
1900 x 1900 mm
76" x 76"

GENESIS FUTURA HS

FULLY AUTOMATIC
ROTARY RING
WRAPPER

FULLY AUTOMATIC
ROTARY RING WRAPPER
2 REELS

GENESIS FUTURA /2

OUTPUT CAPACITY
up to **110**
pallet/h



OUTPUT CAPACITY
up to **125**
pallet/h



BENEFITS

S-PATTERN

LOWER NECKDOWN,
MAXIMUM SAVINGS



LOW TCO

REDUCED
TOTAL OPERATIVE COSTS



DYNAMIC PARACHUTE

DOUBLE REDUNDANT AND
CONTINUOUS LOCKING MECHANISM
FOR MAXIMUM OPERATOR SAFETY



MODULAR DESIGN

PREPARED FOR QUICK
UPGRADES SETUP



QUICK AND FLEXIBLE SETUP

EASY AND INTUITIVE MACHINE
SETTINGS, FAST PARTS CHANGEOVER



HMI

INTUITIVE
& EASY-TO-USE
INTERFACE



BENEFITS

S-PATTERN

LOWER NECKDOWN,
MAXIMUM SAVINGS



LOW TCO

REDUCED
TOTAL OPERATIVE COSTS



DYNAMIC PARACHUTE

DOUBLE REDUNDANT AND
CONTINUOUS LOCKING MECHANISM
FOR MAXIMUM OPERATOR SAFETY



MODULAR DESIGN

PREPARED FOR QUICK
UPGRADES SETUP



QUICK AND FLEXIBLE SETUP

EASY AND INTUITIVE MACHINE
SETTINGS, FAST PARTS CHANGEOVER



HMI

INTUITIVE
& EASY-TO-USE
INTERFACE



ROBOPAC
TECHNOLOGIES



ROBOPAC
TECHNOLOGIES



LOAD SIZES

MIN
500 x 600 mm
20" x 24"

MAX
1220 x 1220 mm
48" x 48"

LOAD SIZES

MIN
500 x 600 mm
20" x 24"


MAX
1220 x 1220 mm
48" x 48"

GENESIS THUNDER HS


FULLY AUTOMATIC
ROTARY RING
WRAPPER

FULLY AUTOMATIC
ROTARY RING WRAPPER
2 REELS

GENESIS THUNDER /2

OUTPUT CAPACITY
up to  **130**
pallet/h



OUTPUT CAPACITY
more than  **200**
pallet/h



BENEFITS

S-PATTERN

LOWER NECKDOWN,
MAXIMUM SAVINGS



LOW TCO

REDUCED
TOTAL OPERATIVE COSTS



DIRECT DRIVE

NO SLIDING CONTACTS, SERVO
CONTROLLED PRE-STRETCH
MOTORS FOR PERFECT CONTROL OF
PRE-STRETCH AND CONTAINMENT FORCE



HYGENIC DESIGN

SMOOTH & NEAT DESIGN FOR EASY
CLEANING OPERATIONS, COVERS
TO PREVENT PRODUCT CONTAMINATION



DYNAMIC PARACHUTE

DOUBLE REDUNDANT AND
CONTINUOUS LOCKING MECHANISM
FOR MAXIMUM OPERATOR SAFETY



MODULAR DESIGN

PREPARED FOR QUICK
UPGRADES SETUP



BENEFITS

S-PATTERN

LOWER NECKDOWN,
MAXIMUM SAVINGS



LOW TCO

REDUCED
TOTAL OPERATIVE COSTS



DIRECT DRIVE

NO SLIDING CONTACTS, SERVO
CONTROLLED PRE-STRETCH
MOTORS FOR PERFECT CONTROL OF
PRE-STRETCH AND CONTAINMENT FORCE



HYGENIC DESIGN

SMOOTH & NEAT DESIGN FOR EASY
CLEANING OPERATIONS, COVERS
TO PREVENT PRODUCT CONTAMINATION



DYNAMIC PARACHUTE

DOUBLE REDUNDANT
AND CONTINUOUS LOCKING MECHANISM
FOR MAXIMUM OPERATOR SAFETY



MODULAR DESIGN

PREPARED FOR QUICK
UPGRADES SETUP



ROBOPAC TECHNOLOGIES



LOAD SIZES

MIN
400 x 600 mm
16" x 24"

MAX
1270 x 1270 mm
50" x 50"

ROBOPAC TECHNOLOGIES



LOAD SIZES

MIN
400 x 600 mm
16" x 24"

MAX
1270 x 1270 mm
50" x 50"

ROBOBAND

FULLY AUTOMATIC
HORIZONTAL BANDER

FULLY AUTOMATIC
ROBOTIC WRAPPER

KRATOS

OUTPUT CAPACITY
up to **150**
pallet/h



OUTPUT CAPACITY
up to **120**
pallet/h



BENEFITS

PARTIAL BANDING

SUITED TO APPLICATIONS WHERE IS NEEDED TO SECURE A STACK OF PRODUCTS NOT REQUIRING AN OVERALL CONTAINMENT



QUICK AND FLEXIBLE SETUP

EASY, FAST PARTS CHANGEOVER



PRE-LABELLING

POSSIBILITY TO ADD A LABELLING MACHINE FOR PRODUCT IDENTIFICATION



SINGLE OR DOUBLE REEL BANDING

ONE OR TWO PAIR OF REELS FOR LOAD STABILIZATION



FULLY AUTOMATIC MOVEMENTS

HIGH PRECISION MOVEMENTS CONTROLLED BY PLC



ROBOPAC
TECHNOLOGIES



LOAD SIZES

MIN
600 x 800 MM
24" x 32"

MAX
1300 x 1100 MM
52" x 44"

BENEFITS

S-PATTERN

LOWER NECKDOWN, MAXIMUM SAVINGS



FILM AUTO-RECOVERY

CAPABILITY TO AUTO-RECOVER EVENTUAL FILM BREAKAGES



LOW TCO

REDUCED TOTAL OPERATIVE COSTS



DYNAMIC PARACHUTE

DOUBLE REDUNDANT AND CONTINUOUS LOCKING MECHANISM FOR MAXIMUM OPERATOR SAFETY



BRUSHLESS MOTORS

SERVO CONTROLLED PRE-STRETCH MOTORS FOR PERFECT CONTROL OF PRE-STRETCH AND CONTAINMENT FORCE



LESS FILM BREAKAGES

WRAPPING CYCLE EXTREMELY RESISTANT TO TEARING THANKS TO FILM FUSION



ROBOPAC
TECHNOLOGIES



1m

LOAD SIZES

MIN
400 x 600 mm
16" x 24"

MAX
1000 x 1200 mm
40" x 48"

MAIN OPTIONALS

MAIN OPTIONALS



TOP SHEET COVER

Device for top load covering with film



PRESSURE PLATEN

Load stabilization device



TOP CAP APPLICATOR

System to apply a cardboard sheet on top of the pallet



PALLET LIFTER

Pallet lifter device



VERTICAL CORNER APPLICATOR VCA

Device for automatic lateral corner board application



ARC - AUTOMATIC REEL CHANGE

Device for a automatic replacement of empty stretch film reel with new wrapping reel



SLIP-SHEET FOLDING DEVICE

System to fold slip-sheets flaps, with or without wooden pallet, to get them wrapped during cycle

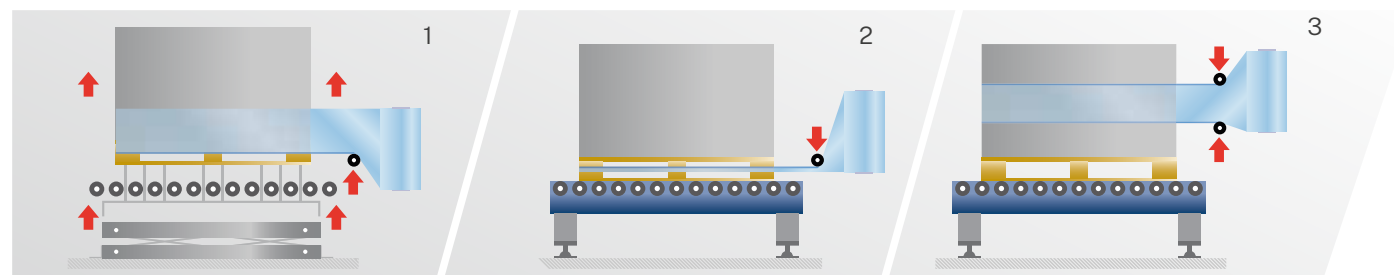


TOP CAP FOLDING DEVICE

System to fold top cap flaps, to get them wrapped during cycle

ROPING DEVICE

System to reduces the film band into a "rope" to ensure a more effective stabilization of the load



1.
SINGLE MOVEMENT
FROM THE BOTTOM

2.
SINGLE MOVEMENT
FROM THE TOP

3.
DOUBLE MOVEMENT



SPRING CLAMP

System for clamping, cutting and sealing the film, which occurs without contact with the product

ONLY ROTOPLAT AND HELIX



EASY-LOCK

Device to place the film rope on the pallet without the assistance of the machine pallet lifter

ONLY HELIX 1 - 3 - 4

PALLET HANDLING



**PALLET
ALIGNERS**



**PALLET
ELEVATORS**



**PALLET
STACKERS**



**LOW PROFILE
CONVEYORS**



**ROLLER
CONVEYORS**



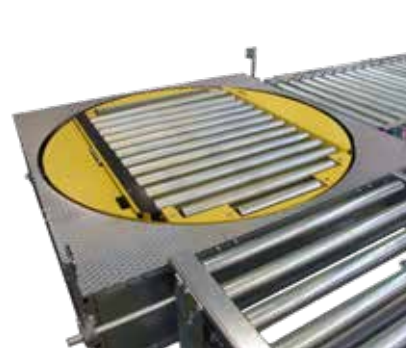
**CHAIN
CONVEYORS**



**EMPTY PALLET
MAGAZINES**



**90° ROLLERS _ CHAINS
TRANSFER**



**90° ROTATING
TABLES**

COMPLEMENTARY MACHINES

LGV

AURIGA, THE LASER GUIDED VEHICLES BY OCME
OCME offers an extensive range of laser guided vehicles fitted with a highly reliable guiding and correction system that concurrently offers easy implementation and operating flexibility.



PALWRAPP

PALWRAPP is the range of compact and modular palletizers that feature extreme flexibility, safety and user friendliness hence representing mission-critical components for automated end-of-lines designed for Food as well as Consumer Packaged Goods



PACKERS

Robopac Packers production ranges from continuous film and sealing bar shrink wrappers with heat-shrink film, wrap-around machines, tray packers, combined lines and palletizers.



SOTEMAPACK

Sotemapack's product range includes tray plus carton wrap around machines and shrink wrapping solution covering the medium-low speed demand for carton and film solutions.



MEYPACK

Meypack offer innovative solutions for customer's specific requirements in the areas of case packaging technology, film-packaging technology, palletising and depalletizing technology, and bag closing technology.





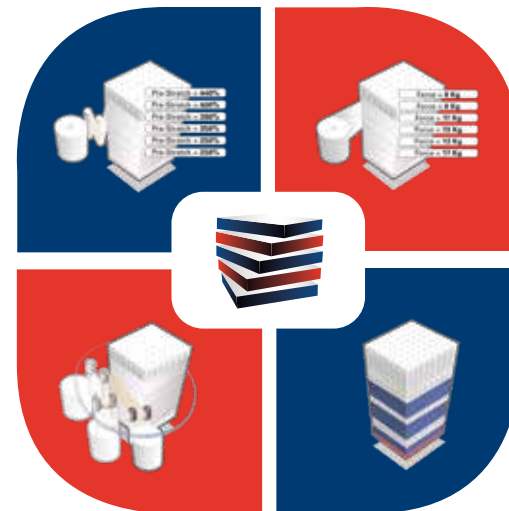
- › MULTI-LEVEL VARIABLE PRE-STRETCH
- › MULTI-LEVEL VARIABLE CONTAINMENT FORCE
- › PROACTIVE CORNER COMPENSATION
- › STRATEGIC FILM PLACEMENT

Each of these factors stabilize and protect your product most effectively while using 30 to 50% less film

BENEFITS

Wrapping recipes are optimized according to the load, hence:

- › total flexibility for every load size
- › best product care also in case of delicate products
- › high-quality packaging
- › safer logistics
- › film savings up to 50%



GO GREEN WITH ROBOPAC!!

ROBOPAC is committed to creating a more sustainable future thanks to the most advanced wrapping technologies aimed at keeping under control and reducing consumables

- › Minimize carbon footprint
- › Reduce plastic waste
- › Reduce cardboard packaging waste

Techlab is the most advanced laboratory system in the packaging field with the aim of a continuous process and product development. Our customers can have scientific evidence of the packaging systems of palletised loads efficiency.



CORELESS STRETCH FILM REELS



PERFORATED STRETCH FILM



NET WRAPPING FILM



ROBOPAC TECHNOLOGICAL SOLUTIONS

CORELESS PIN HOLDER



Solution for clamping, cutting and threading the film without sealer, by inserting the last tail of the wrapping into the second-last wrap.

Robopac, is performing continuously tests in the TECHLAB on innovative packaging materials, in order to find new eco-friendly solutions, leveraging the experience gained from over 6000 tests conducted in the last 10 years.

PCR STRETCH FILM

Post-Consumer Recycled wrapping material. From 30% to 60% of recycled waste materials such as recycled plastic bottles.



BIOBASED FILM

Packaging materials derived from renewable, biological sources, such as sugar cane. From 30% to 50% of biobased raw materials.



PAPER WRAPPING MATERIAL



TECHLAB

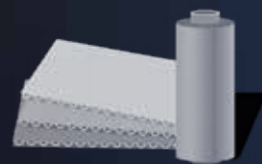
Techlab is the most advanced laboratory system in the packaging field with the aim of a continuous process and product development. Our customers can have scientific evidence of the packaging systems of palletised loads efficiency. Inside TechLab it is possible to take different tests, right on the specific product, in order to find out the best packaging solution to preserve the goods during the transportation. Furthermore, the less materials are involved, the lowest the costs and the environmental impact will be.



BENEFITS

60%

Up to 60% of packing material saved



40%

Palletised load stability increased up to 40%



ROBOPAC TECHNOLOGIES

85%

Product damage reduced up to 85%



6000

More than 6000 tests in 10 years



ACCELERATING SLED

Thanks to the accelerating sled it is possible to make different tests, simulating the worst case on every type of uneven path, whether it is by truck, train, sea or a mix of the three options.



SHAKING TABLE

The machine tests the pallet stability stressing the product by a circular movement around an axle.



HEXAPOD

Hexapod can recreate each type of solicitation that can happen during the transport, in each of the 6 degrees of freedom; it can register an existing path, using an accelerometer, and reproduce it removing downtimes and solicitations that do not stress the sample.





BENEFITS

RCONNECT is an optional tool for controlling and collecting data from installed machines to constant monitor their performances and anticipate possible failures to keep maximum line efficiency.



MONITOR YOUR PERFORMANCE

Rconnect combines innovation and connectivity, allowing the complete control of machine operations and final user support



IMPROVE YOUR PERFORMANCE

Remotely optimize machine settings in order to achieve the best performances obtaining film savings, load protection and TCO reduction



REMOTE ASSISTANCE

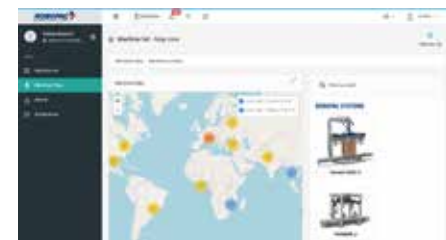
Remote assistance in private connection without need of company LAN



WHEREVER YOU ARE

Access through a dedicated password protected portal to all your equipments installed, analyzing performances and historical data

Portal home page



Machine dashboard



Machine productivity



Customized graphs



Daily reading



With Robopac's service solutions, you invest in long term performance.

You can rely on Robopac as your partner, to understand, anticipate your needs, and translate them into maximum efficiency results.

Robopac is present worldwide with widespread network of technicians, not only they will keep your machine working, but they will ensure its optimum functioning, to maintain and increase your line's productivity.

ON SITE SERVICE: worldwide presence with widespread network of technicians to

- keep machines working
- ensure machine optimum functioning
- maintain and increase line's productivity through diagnostic visits and reports, audits, programmed maintenance, overhauls, upgrades installation and emergency intervention

REMOTE SERVICE

24/7 telephone support service to ensure the best qualified support 24 hours a day, 7 days a week, worldwide.

MACHINE IMPROVEMENT

Quickly supply of requested spare parts through warehouses in HQ and worldwide branches and the dedicated portal MYROBOPAC.

Possibility to upgrade and retrofit machines to improve, where possible, the maximum efficiency and productivity.



TECHNICAL TRAINING

professional training courses held by Robopac staff to qualify customers' operators.

WARRANTY AND SERVICE CONTRACT:

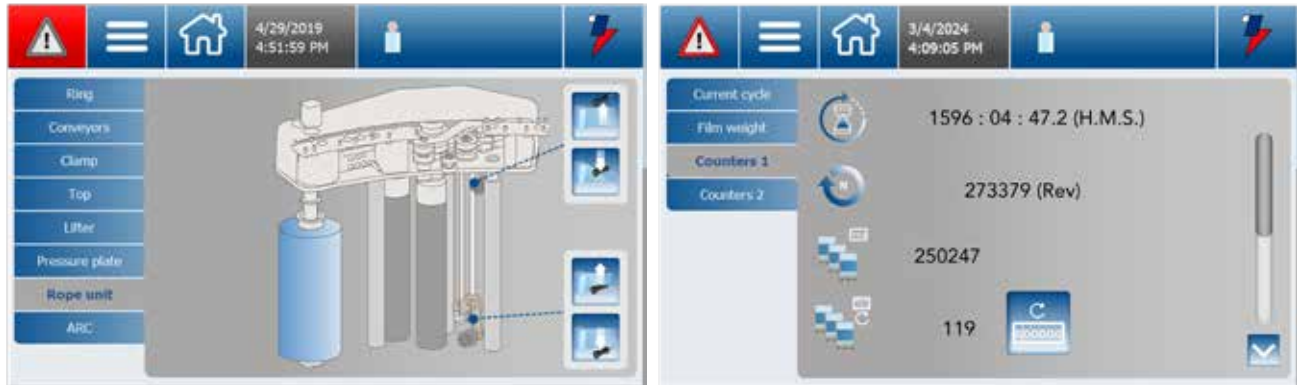
possibility to extend the machine warranty.

ROBOPAC SERVICE SUPPORT

At your service 24 hours per day, 365 days per year!



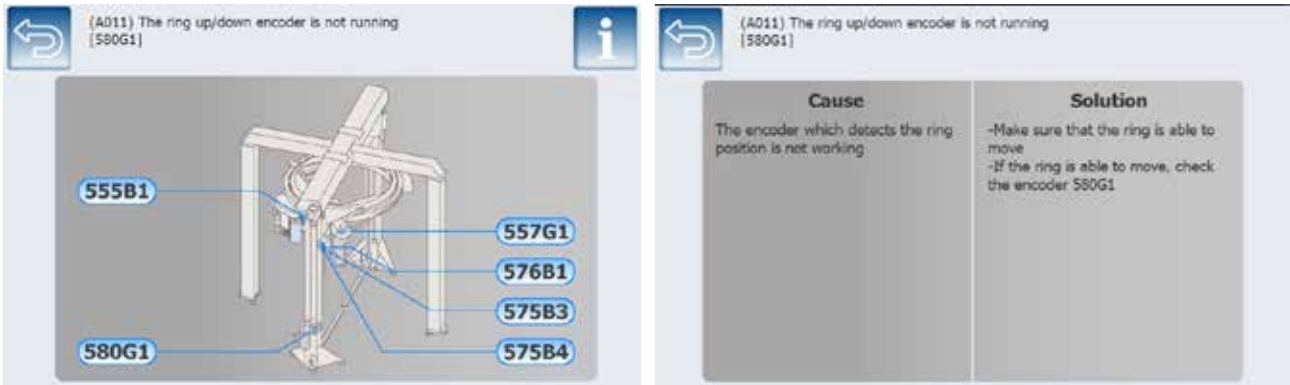
- › Easy-to-use display for operators
- › Manual movements activated through 3D image icons
- › Technical documentation on board of HMI
- › Machine counters for fast status analysis



The software of Robopac Systems wrappers can be integrated through the optional Troubleshooting kit and TPM kit.

TROUBLESHOOTING

Robopac Systems offers a problem-solving solution through troubleshooting with simple and intuitive instructions directly on the HMI, using texts and images that guide towards a quick resolution.

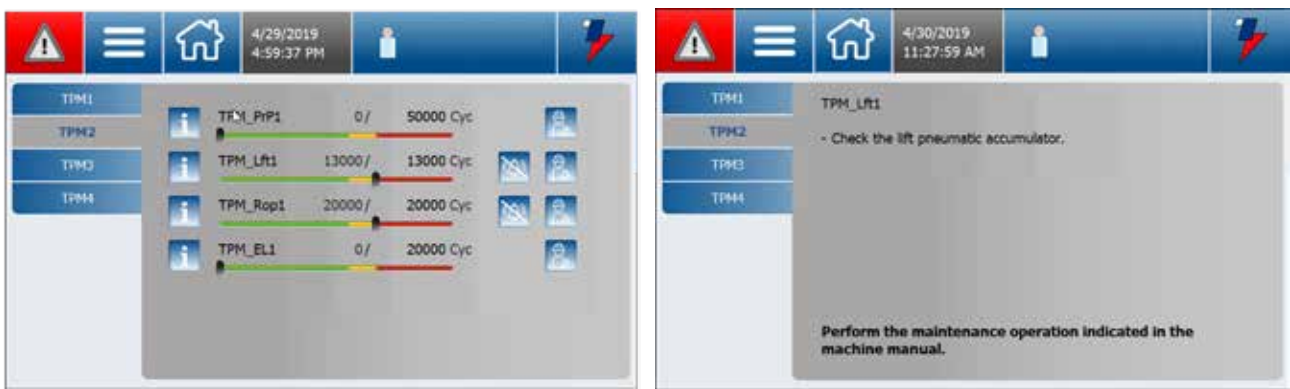


TPM - TOTAL PRODUCTIVE MAINTENANCE

Key aspect of TPM is preventing failures through preventive and predictive maintenance. This involves identifying and addressing issues before unexpected breakdowns occur.

Thanks to the TPM kit, Robopac Systems allows for the monitoring of machinery, keeping preventive and predictive maintenance operations under control.

The software suggests to operators when these operations should be performed and how to carry them out.



PRODUCTION PLANTS

ROBOPAC SYSTEMS

S.P. Marecchia, 59 - 47826 Villa Verucchio, Rimini - Italy
T. +39-0541-673411 - info.systems@robopac.com
www.robopac.com/systems

ROBOPAC MACHINERY

Via Fabrizio da Montebello, 81 - 47892 Gualdicciolo
Repubblica di San Marino
T. +378-0549-910511 - info.machinery@robopac.com
www.robopac.com/machinery

ROBOPAC PACKERS

Via Ca' Bianca, 1260 - 40024 Castel San Pietro Terme, Bologna - Italy
T. +39-0541-673411 - info.packers@robopac.com
www.robopac.com/packers

Via J. Barozzi, 8 - 40053 Valsamoggia, Bologna - Italy
T. +39-0510025000 - info.packers@robopac.com
www.robopac.com/packers

SOTEMAPACK S.p.A.

Via Calari, 11 - 40011 - Anzola dell'Emilia, Bologna - Italy
T. +39-051-64244452 - info@sotemapack.com
www.sotemapack.com

MEYPACK VERPACKUNGSSYSTEMTECHNIK GMBH

Industriestraße 3, 48301 Nottuln - Germany
T. +49 2509 940 - info@meypack.de
www.meypack.de

ROBOPAC BRASIL

BR 470, KM 218, 1515, Bairro Vinosul - CEP: 95701-350,
Bento Gonçalves/RS - Brasil
T. +55 5434557200 - info.br@robopac.com
www.robopacbrasil.com

TOPTIER

10315 SE Jennifer St, Portland, Oregon 97015 - USA
T. +1-503-353-7588 - sales@toptier.com
www.robopac.com/toptier

SUBSIDIARIES

AETNA GROUP DEUTSCHLAND

Holderäckerstrasse 17 - 70499 Stuttgart - Weilimdorf - Germany
T. +49 7118067090
info.de@robopac.com

AETNA GROUP VOSTOK

Otradnaya str. 2B building 7 office 1 - 129329 Moscow - Russia
T. +7 4956443355
info.ru@robopac.com

AETNA GROUP FRANCE

4, avenue de l'Europe - 69150 Décines - France
T. +33 472145401
info.fr@robopac.com

AETNA GROUP UK

Packaging Heights Units 7/8 - Highfield Parc
Highfield Road Oakley
Bedford MK43 7TA - Great Britain
T. +44 1234825050
info.uk@robopac.com

AETNA GROUP IBERICA

P.I. Portal Mediterráneo, C/ Dauradors 23
12500 Vinaròs, Castellón - Spain
T. +34 964860901
info.es@robopac.com

ROBOPAC USA

2150 Boggs Road Building 200 - Suite 200 Duluth
GEORGIA 30096 - USA
T. +1 6784737896
info.us@robopac.com

ROBOPAC CHINA

Building 2, No. 877, Jinliu Rd. Jinshan Industrial Area,
Shanghai, 201506 - China
T. +86 02162665966
info.cn@robopac.com

