


ROCKMAN



KEY MANAGEMENT

Chairman: Mr. Suman Kant Munjal

Chairman of Rockman Industries Limited, One of the oldest Hero group company - manufacturing automotive components for some of the marquee auto companies, Chairman of newly formed company and group's first venture into Electronics-"Hero Electronix Pvt Ltd." An acclaimed leader and an internationally trained expert in business and production management. Instrumental in transforming Rockman industries Ltd. into a leading player in the die casting industry & other diversified business segments.

Managing Director: Mr. Ujjwal Munjal

Mr. Ujjwal Munjal is the son of Mr Suman Munjal. He has been instrumental in accelerating Rockman's journey into diversified products. He is also the founder director of Hero Electronix.

ROCKMAN INDUSTRIES

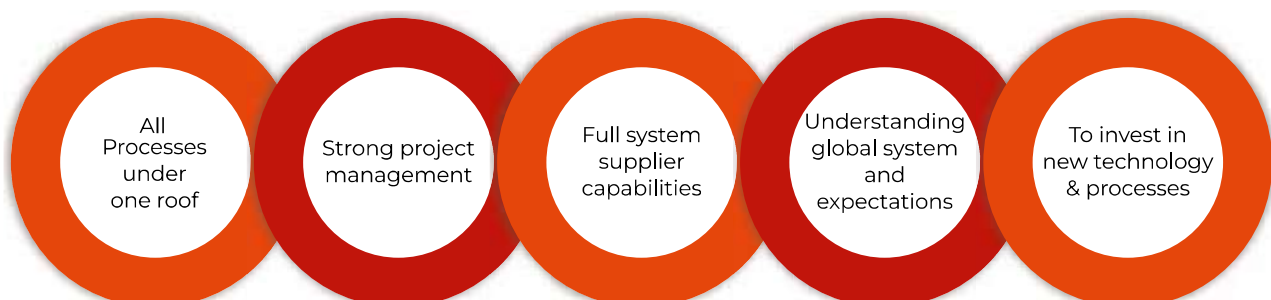
Rockman is part of Multi Billion US Dollar Hero group having more than 35,000 employees. Rockman was incorporated in the year 1960 as a bicycle component manufacturer. Since then we have diversified into many businesses. We are the largest Aluminium foundry in the country and a leading supplier of Aluminium die casted, machined & painted assembly components to world's largest motorcycle manufacturer and several other renowned auto OEMs. We are also supplying carbon composite parts to luxury automotive, motorsports, aerospace and various other industries. Having nine plants located at Ludhiana, Mangli, Haridwar, Bawal, Chennai, Surat, Vadodara & Tirupati. We have processing capacity of more than 2,46,000 tonnes of Aluminium annually. We are a one stop shop having all the three casting processes (GDC, LPDC and HPDC) and end to end capability from design, engineering, casting, machining, painting and assembly. We are the largest two wheeler alloy wheel maker with 15 Mn+ installed capacity. We also make motorcycle chains with capacity of 21.0 Mn+ meter.

MANUFACTURING

Rockman has capability to manufacture all tools in-house and has got expertise in making precision tools. At Rockman, Process Development is the key to ensure timely identification and deployment of all the necessary resources not only in terms of machines but also inspection facilities, trained manpower, utilities, etc to ensure smooth development, trial, inspection and submission of PPAP lots as per defined timelines.

- ▶ In-house die designing and development
- ▶ Producing 300 dies per year at Ludhiana & Haridwar Facilities
- ▶ Capability to produce tools upto a weight of 5 tonnes
- ▶ High precision CNC, EDM, wire cut and high speed machining of tools and dies
- ▶ Spotting press for die matching
- ▶ End of life drawing and document management done through dedicated windchill based PLM system
- ▶ Variety of CNC. VMC's and SPM's
- ▶ IATF-16949, ISO -14001, OHSAS, ISO/IEC 27001 Certified

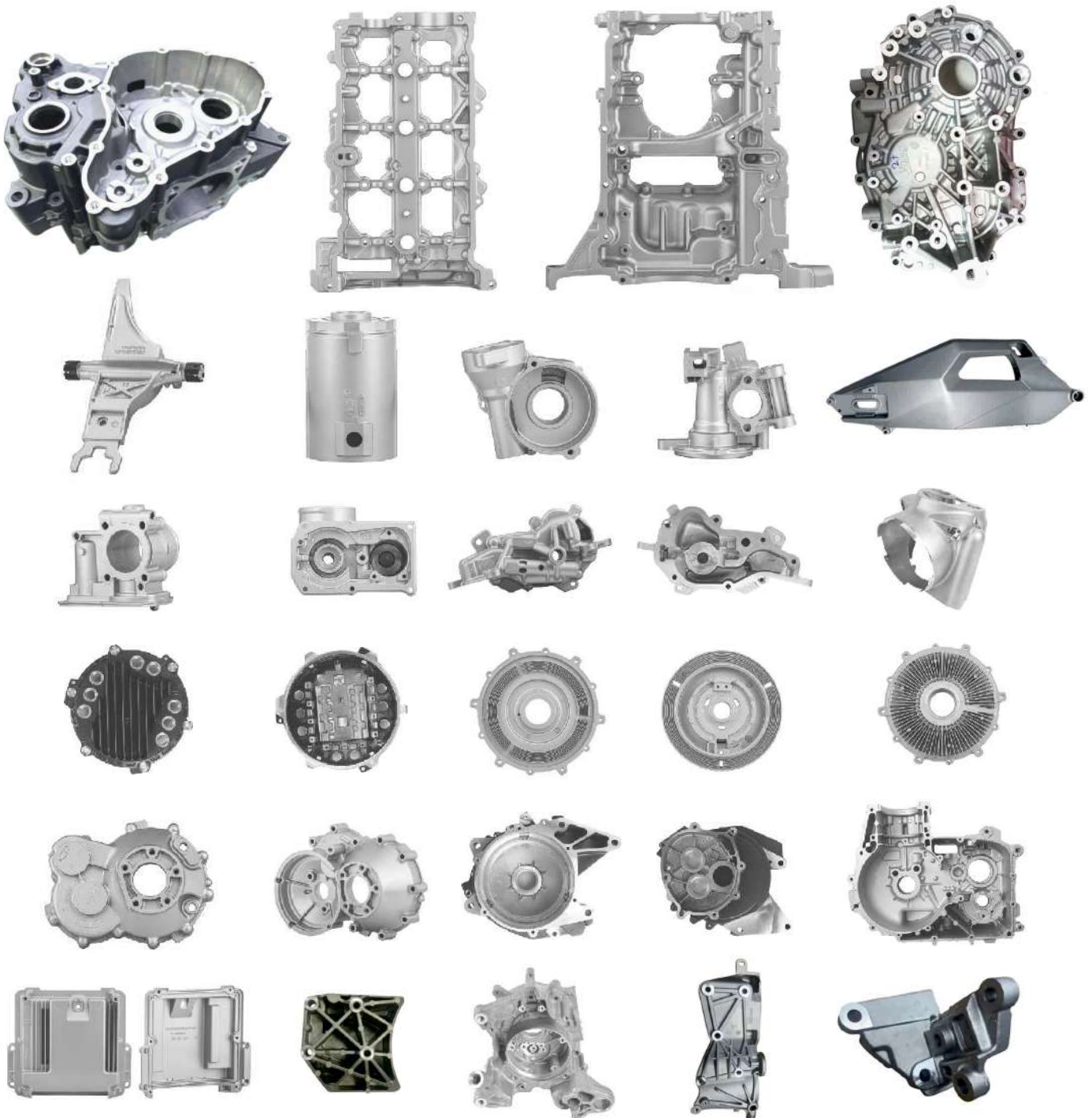
CORE COMPETENCY



PROCESS

HIGH PRESSURE DIE CASTING

- ▶ Over 120 HPDC machines from 250T-1650T, expanding to 1800 Tons
- ▶ Various Engine and Transmission parts for Two Wheelers and Four Wheelers
- ▶ Annual processing capacity of 60,000 tons of Aluminium Casting
- ▶ Casting components as heavy as 6.5 kg
- ▶ Wall thickness of 2.5 mm
- ▶ Daily production of over 1,50,000 components
- ▶ HPDC machines with real time shot control
- ▶ Process multiple alloys
- ▶ Dies upto 8 cavities
- ▶ Castings with critical porosity requirement
- ▶ Squeeze pin and heating cooling unit



LOW PRESSURE DIE CASTING AND COUNTER PRESSURE DIE CASTING

- ▶ Over 30+ LPDC machines and separate dedicated LPDC line for car alloy wheels
- ▶ Annual Capacity of 35,000+ tons of aluminium casting
- ▶ In-house facilities for manufacturing sand cores
- ▶ Daily production of over 40,000+ components
- ▶ In-house facility for T6 Heat Treatment
- ▶ Porosity inspection using state of art X Ray inspection with 3D CT Capabilities



GRAVITY DIE CASTING

- ▶ Integrated manufacturing facility for GDC parts like Alloy wheels & Shock Absorber bottom case
- ▶ Over 200+GDC machines
- ▶ Annual processing capacity of 150000+ tons of aluminium casting



ALLOY WHEELS

An industry leader in alloy wheels, we leverage years of expertise in manufacturing alloy wheels through Low-Pressure Die Casting and Gravity Die Casting, for superior end products. Two-wheeler and fourwheeler wheels manufactured and assembled in our facilities are durable and compliant with global standards.

TWO WHEELER ALLOY WHEELS

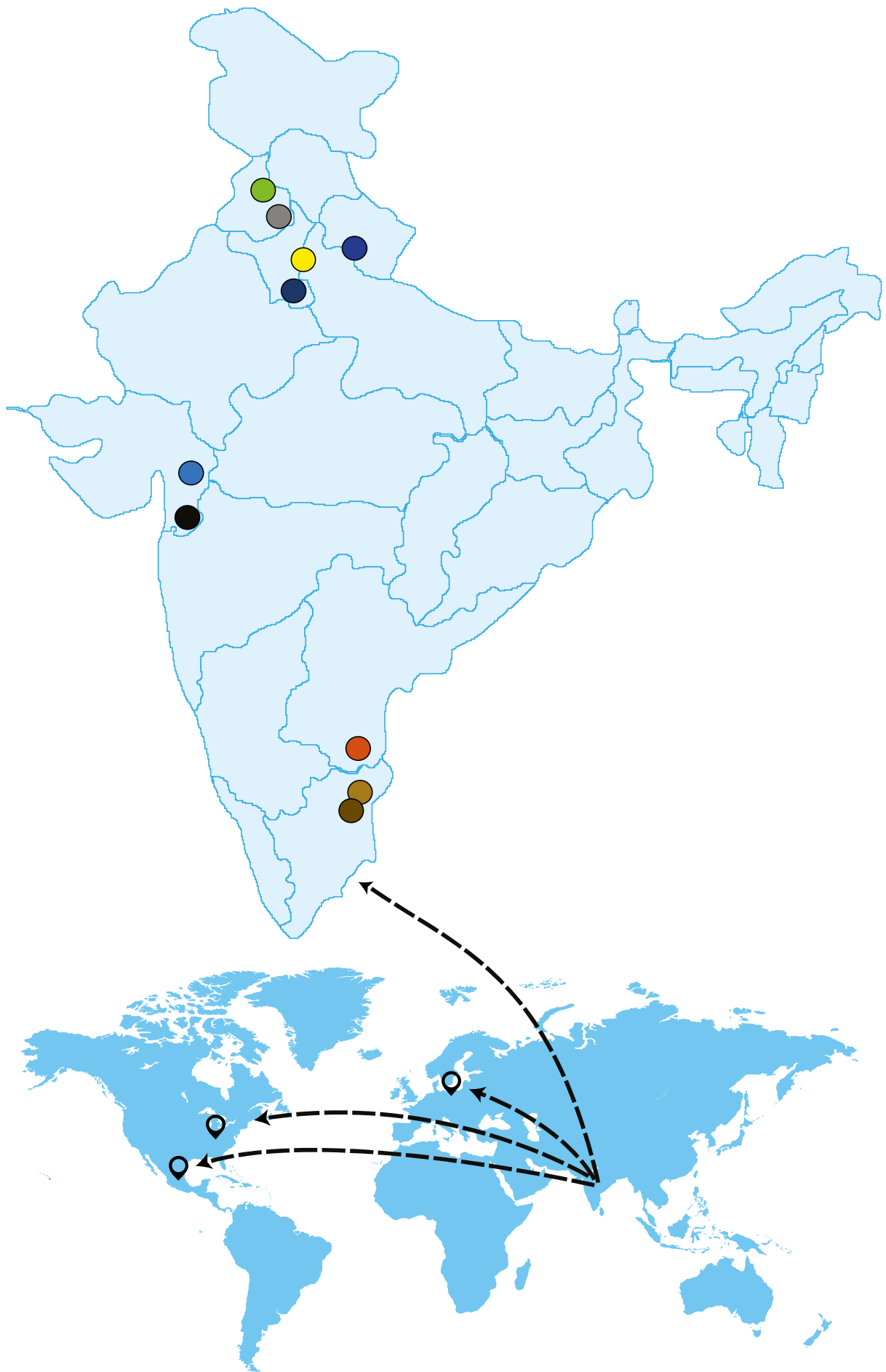
- ▶ Largest manufacturer of two wheelers Alloy wheels in India
- ▶ 200GDC Fully Automatic Machines
- ▶ 17 Million Installed Annual Capacity
- ▶ 4 Production Facilities – Haridwar, Bawal, Halol and Tirupati



FOUR WHEELER ALLOY WHEELS WITH FLOW FORMING

- ▶ A dedicated state of the art facility for four wheeler alloy wheels
- ▶ In collaboration with Hands Corporation, Korea, which is among the top 10 car alloy wheel maker in the world
- ▶ 12 LPDC Machines With Twin Die Pallet Changer
- ▶ Installed Annual Capacity of 1.5 million & planned 2 million in 2026
- ▶ Fully Automated Single Piece Flow With Conveyor Arrangement
- ▶ Auto Extraction & Wheel Transfer in LPDC
- ▶ Auto Sprue Cutting with vision system & online 100% X-Ray Inspection
- ▶ Fully Automated Online Heat Treatment & Shot Blasting
- ▶ Robotic CNC Machining Line & 100% Helium Leak Testing
- ▶ Robotic Painting Line - Powder & Liquid Painting Facility





Overseas Warehouses

📍 Queretaro, Mexico 📍 Louisville, Ohio, USA 📍 Alzenau, Germany

GURUGRAM

01

Corporate Office

LUDHIANA

02

HPDC, LPDC Casting, Machining,
Assembly Painting

**MANGLI,
LUDHIANA**

03

Drive Chain, Cam Chain
Cone Set and Clutch Plate

HARIDWAR

04

HPDC, LPDC, GDC Casting,
Machining, Assembly, Painting,
Alloy Wheels (GDC)

BAWAL

05

HPDC, Machining, Assembly, Painting,
Alloy Wheels (GDC)

**CHENNAI
PLANT 01**

06

HPDC Casting
Machining
Painting, Powder Coating

SURAT

07

Carbon Composite Parts
Hand Laminated Preperg Autoclave
Components

**HALOL,
VADODARA**

08

HPDC, LPDC, GDC Casting,
Machining, Assembly, Painting,
Alloy Wheels (GDC)

TIRUPATI

09

LPDC Alloy Wheels for Cars
GDC Alloy Wheels for 2-Wheelers
Machining and Painting

**CHENNAI
PLANT 02**

10

GDC Casting,
Alloy Wheels,
Machining

PRECISION MACHINING

- ▶ Over 450+ CNC Turning, VMC & HMC machines
- ▶ Dedicated Special Purpose Machines for large volume production
- ▶ Machining Critical Components for automotive transmission, engine, chassis & other applications
- ▶ In line leak testing and ultrasonic washing



ASSEMBLY AND MODULES

- ▶ A wide supplier base for sheet metal parts, forgings, springs, sintered products, seals, plastic parts, bearings, friction material, etc. gives Rockman the expertise to supply full assemblies and modules to its customers.
- ▶ Produces over 150000 assemblies on a daily basis including highly critical and safety related productions like brake drum assembly, wheel hub assembly



SURFACE TREATMENT

- ▶ Environment friendly integrated paint facility
- ▶ Chrome free pre-treatment system
- ▶ 2C1B electrostatic liquid paint line
- ▶ Liquid Painting using Electrostatic Guns
- ▶ No manual handling from pre treatment to Finish
- ▶ Manage multi colour without line stoppage/line loss
- ▶ Zero Discharge Paint Shop
- ▶ Facility for Heat Resistance Painting
- ▶ Shot Blasting
- ▶ Powder Coating



ROCKMAN ADVANCED COMPOSITES

It is an AS9100D & ISO 9001 certified Indo-British enterprise, a part of Rockman Industries Ltd (Hero Group). Exports over 90% of its output to the UK, US and Europe.

CORE STRENGTHS

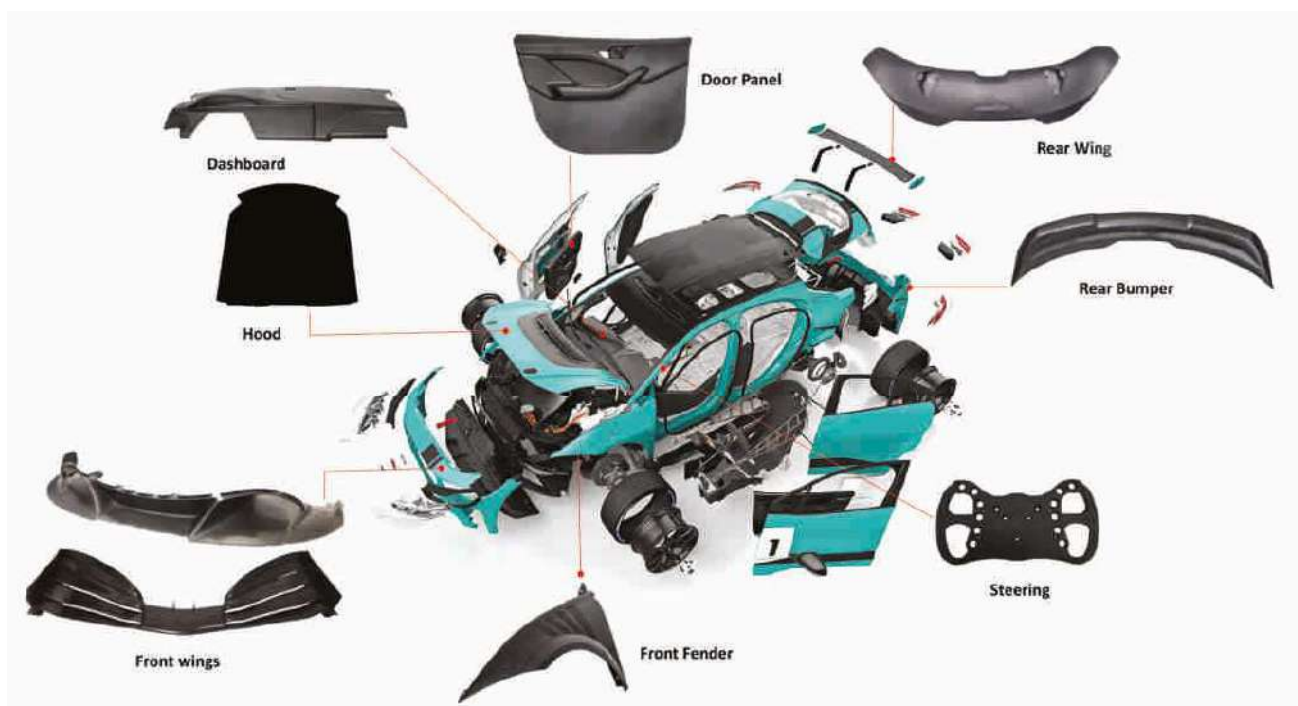
- ▶ One-stop-solution-from prototypes to production runs
- ▶ Detailed designing & structural analysis
- ▶ Material selection & laminate designing
- ▶ In-house pattern, mould, jig, part designing and manufacturing

INDUSTRIES SERVED

- ▶ Automotive
- ▶ Motorsports
- ▶ Renewable Energy
- ▶ Aerospace & Defence
- ▶ Medical
- ▶ Sporting goods
- ▶ Electric Vehicles

CERTIFICATE AND AWARDS

- ▶ AS 9100D
- ▶ ISO 9001 2016
- ▶ ICERP-JEC 2017(Wind Energy)
- ▶ ICERP-JEC 2013(Medical & Sports)
- ▶ ICERP-JEC 2015(Art & Automotive)





Casting



Casting PDI



Machining



Painting



Assembly



Inspection



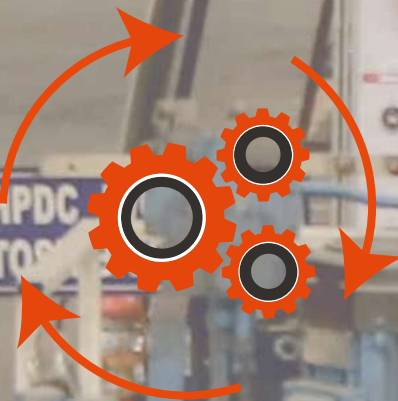
Tool Manufacturing



Engineering



Dispatch & Logistic





OUR VALUABLE CLIENTS

4W OEMs, Domestic



2W OEMs, Domestic



Exports



Tier 1 - Domestic



OEMs & Tier 1 – Electric Vehicle



OUR MISSION

Set highest standards in business practices and be partners in growth of customers by delivering engineering products, services and solutions in innovative and cost effective ways.

OUR VALUES



ROCKMAN

Corporate Office :

9th Floor, Unit 3 & 4, Emaar Capital Tower-2, Sec.26, Sikanderpur Ghosi, M.G. Road, Gurugram-122002 India ; Tel: +91-124-4707700

Plant I Ludhiana :

A-7, Focal Point, Ludhiana-141 010 (Punjab), India; Tel: +91 161 2670701-04

Plant II Haridwar :

3/PI, IIE, SIDCUL, Sector 10, Haridwar- 249403 (Uttarakhand), India; Tel: +91 1334 239811-14

Plant III Mangli :

Phase 8, Focal Point, Mangli, Ludhiana-141010, India; Tel: +91 161 6671700

Plant IV Bawal :

Plot No. 34, Sector 5, Phase II, HSIIDC Growth Centre, Bawal-123501, Haryana, India; Tel: +91 1284 269760

Plant V Chennai :

7/B Cheyyar Sipcot Industrial Estate, Chella Perumbulimedu - 631701, Tamil Nadu, India; Tel: +91 44 24990423

Plant VI Surat:

194-195 SurSEZ, GIDC Sachin, Surat, Gujarat 394230, India Tel: +91 2616555755 / 855

Plant VII Tirupati :

Industrial Park, Pagali, Pagali Village, Yerpada Mandal, Tirupati, Andhra Pradesh – 517619, India

Plant VIII Vadodara :

Milestone No. 32/400, Village Post Asoj, Vadodara Halol Highway, Vadodara, Gujarat – 391510, India

Plant IX Chennai :

Plot No. 6A, Cholovaram Post, Chellaperumpulimedu, SIPCOT Cheyyar, Tiruvannamalai, Tamil Nadu, 631701

www.rockman.in | Email : corporate@rockman.in | bdcorporate@rockman.in