

## **Lift-and-Slide Door Thresholds** Barrier-Reduced to levelZer0



## Contents

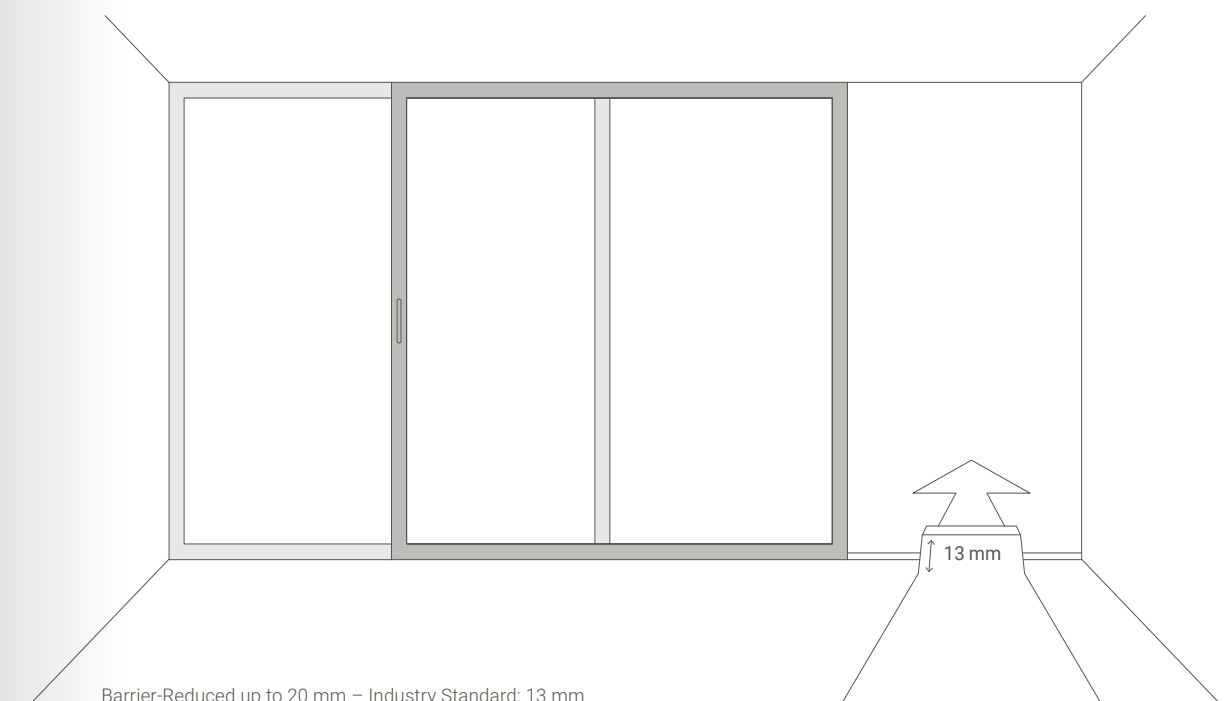
03	<b>The Challenge of Accessibility</b>
05	<b>Top 4 Benefits</b> Salamander levelZer0
06	<b>Ingeniously Simple</b>
07	<b>As Easy as Building Blocks</b>
08	<b>Threshold System</b>
10	<b>Threshold Packages</b> levelZer0_smoothpass levelZer0_comfort
12	<b>Additional Threshold Packages</b>
13	<b>Level Adjustment</b>
14	<b>Threshold Catalog – Parts Listing</b>
15	<b>Installation and Connections</b>
16	<b>With Drainage and Channel</b>
17	<b>UDP – Combating Thermal Bridges</b>
18	<b>Substructure Profiles – Materials and Benefits</b>
19	<b>levelZer0 as a Component of evolutionDrive_HST</b>
20	<b>Salamander Support for Purchase and Planning</b>

# The Challenge of Accessibility

Lift-and-slide doors and sliding systems are becoming increasingly popular. In addition to design, large glazed areas, and the requirements of modern architecture, the chosen threshold profile plays a decisive role when it comes to accessibility and age-appropriate construction. Accessibility has become a legal requirement.

## Challenges and Issues with Lift-and-Slide Door Thresholds

- + According to DIN 18040, only a true zero threshold is considered barrier-free
- + This standard is being revised – meaning even stricter requirements.
- + The claim that 20 mm thresholds qualify as barrier-free is incorrect.
- + Very few thresholds are suitable for renovation projects.
- + Thresholds with large tread plates are difficult to process.
- + Most thresholds have a high installation height and are difficult to fit. This makes them completely unsuitable for most renovation work.
- + Most thresholds require configuration from many individual components.
- + Increasing design demands: Customers want solutions that are visually and tactilely seamless one-piece look and feel.







# Top 4 Benefits: Salamander levelZero

## For Builders



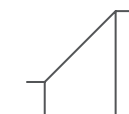
**True 0:** The Salamander threshold is a genuine zero threshold. No raised edges or wide channels obstruct the way.



**Fully Eligible for Funding:** Zero threshold in accordance with KfW Funding Program 40. Meets the requirements for accessibility as per DIN 18040.



**No Tripping Hazard:** Ramp options ensure that even with necessary level adjustments, the threshold can be comfortably rolled over.

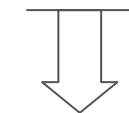


**Renovation Solution:** In renovation projects or later modifications, differences in floor covering heights can be compensated with a level adjustment.

## For Window Manufacturers and Installers



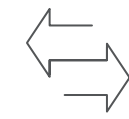
**Shorter Installation Time:** Saves material and improves installation quality. Fewer sealing joints mean fewer potential points of failure.



**Minimizes storage requirements and reduces costs.** At only 25 mm high – up to 50 % lower than competitor products.



**The Zero Is Set:** A zero threshold in our product range that exceeds current legal requirements.



**Parts that can be replaced afterwards reduce maintenance effort**

# Ingeniously Simple

### Flat

- Ultra-low construction height of just 25 mm
- Meets barrier-free and true zero-threshold requirements
- Edge-free – no tripping hazard
- Threshold base body up to 50 % lower than the average threshold
- Even in the standard version, up to 50 % lower than competitor products

### Simple

- Installation error-resistant (running tracks replaceable afterwards)
- Easy configuration
- Fewer components
- No tread plates required
- Includes substructure insulation profile

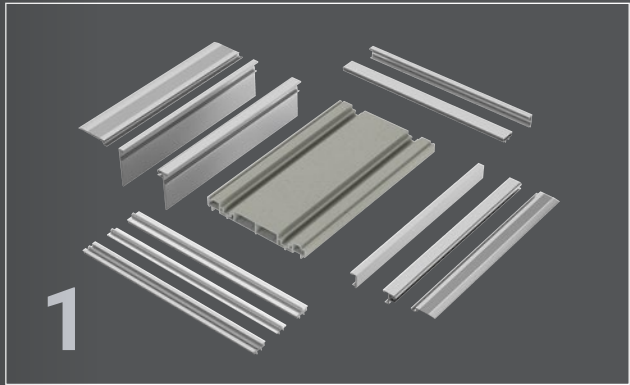
### Flexible

- Fits any situation
- Suitable for existing flooring
- Ramps available for renovation use
- “Upgrade” or “Downgrade” possible if requirements change
- Optional insertion of a steel reinforcement or insulation profile to improve the  $U_r$  value

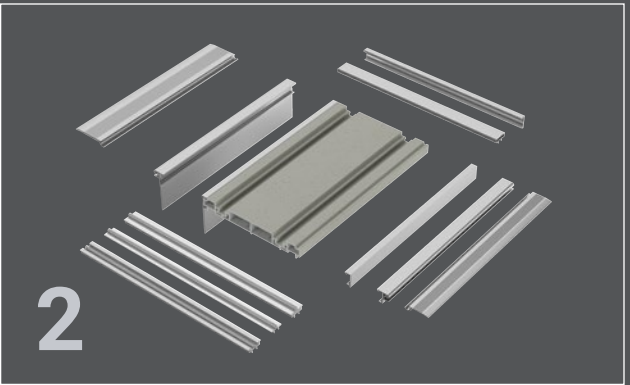


Preconfigured zero threshold with substructure insulation profile

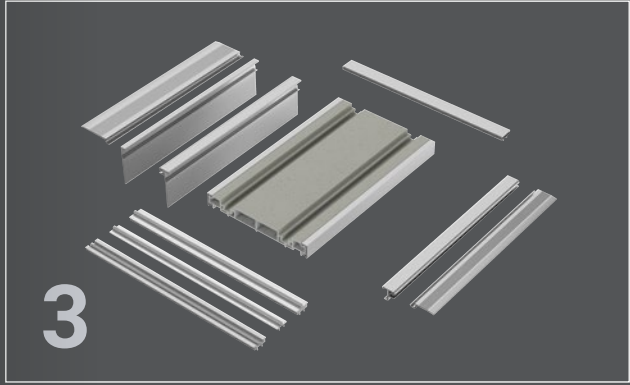
# As Easy as Building Blocks



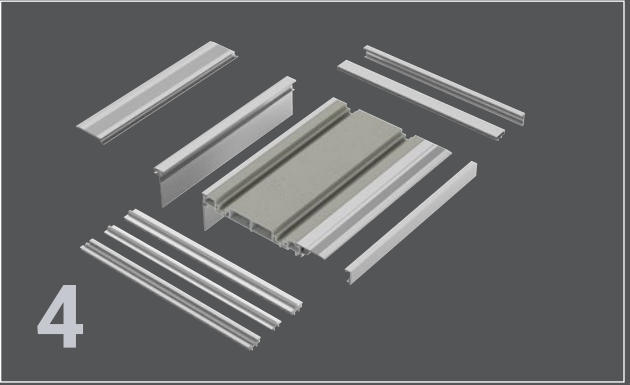
Configure the Threshold



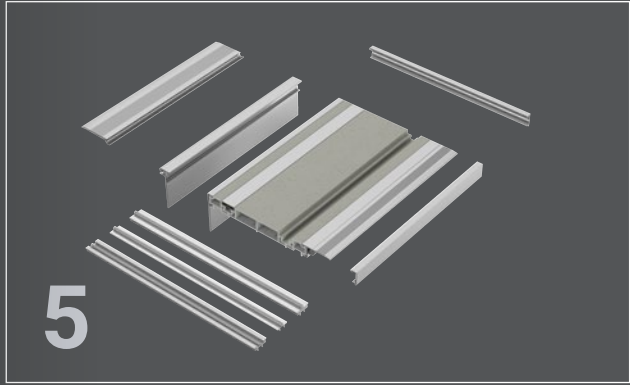
Extended end plate for liquid sealing



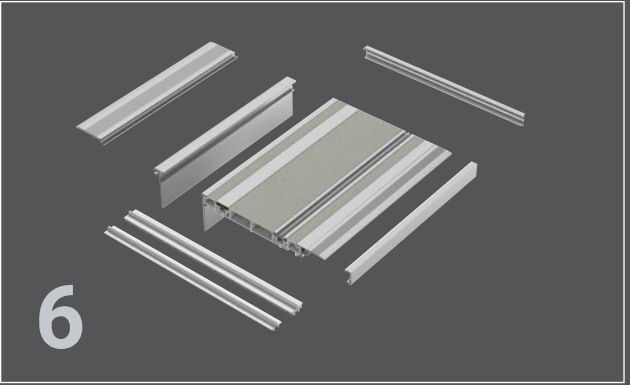
Choice of flush-to-floor end piece or intermediate piece for level adjustment



Long ramp for easy roll-over



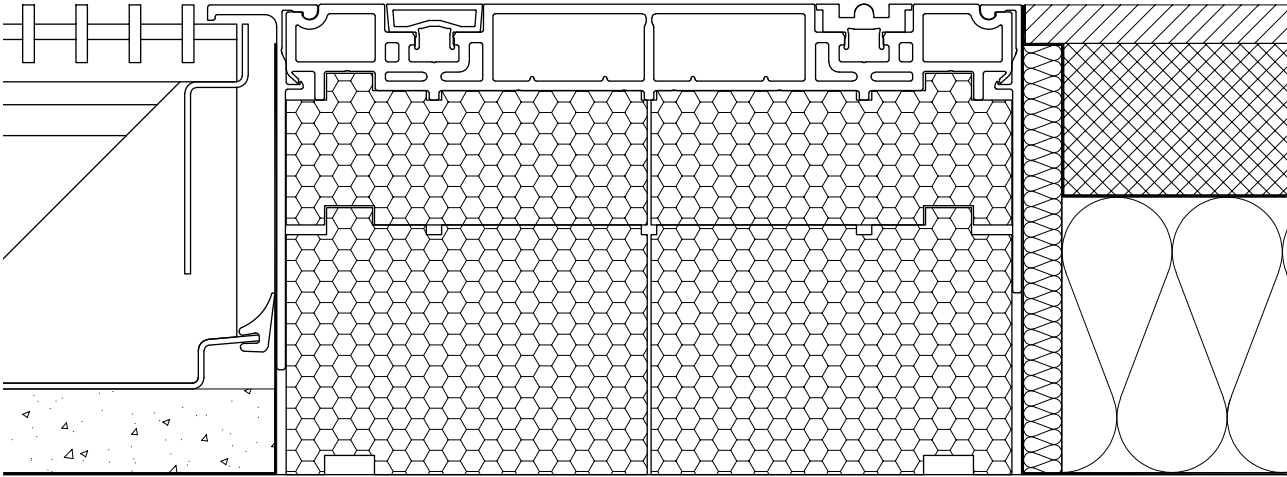
Installation of track for fixed element



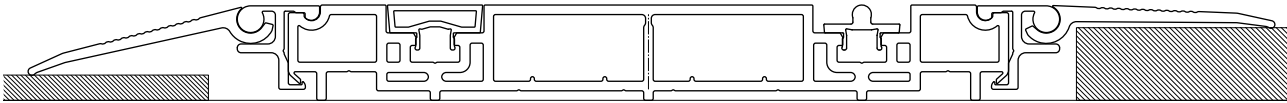
Choice of guide track for the movable sliding element



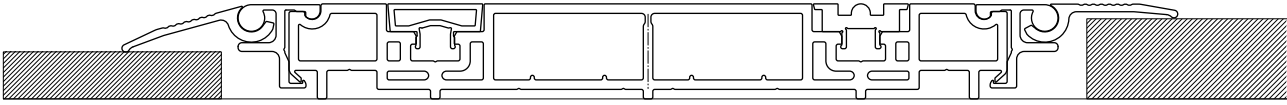
# Threshold System



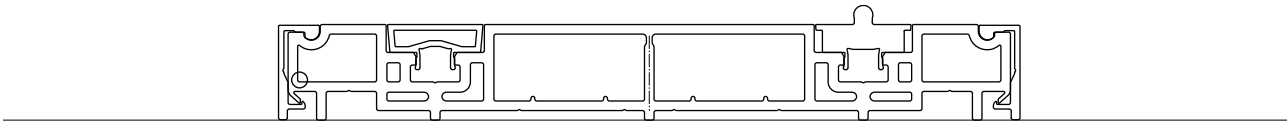
New Construction: levelZer0 barrier-free, flush-to-floor installation with substructure insulation profile and drainage



Renovation with Height Difference: levelZer0 with long ramp for smoother roll-over or to bridge a larger height difference



Renovation with Height Difference: levelZer0 with short ramp for smoother roll-over or to bridge a smaller height difference while avoiding edges



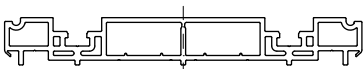
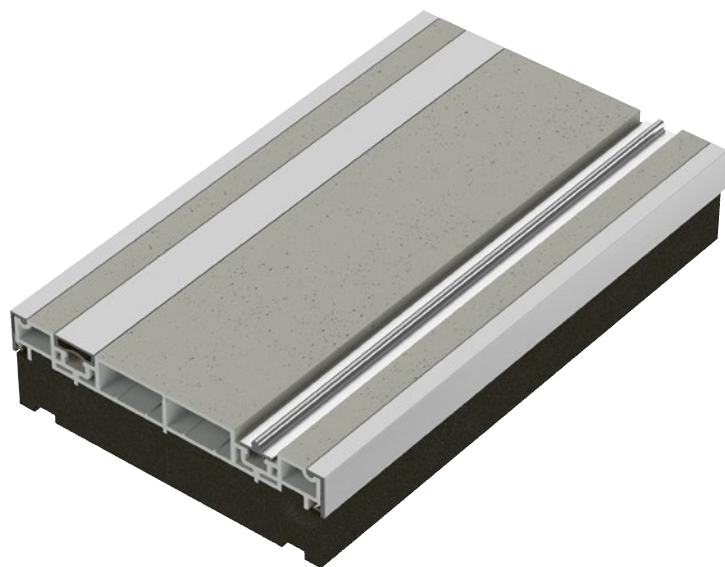
Renovation: Even in the Basic version, usable with a 25 mm edge and a 5 mm high guide rail



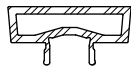
# Threshold Packages

## levelZer0\_smoothpass

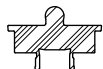
Salamander threshold packages represent only a small selection of the wide range of configuration options available. The Basic installation package – Salamander’s barrier-reduced solution, suitable for installation in new builds or on flat subfloors: For sliding scheme A



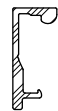
**ZS5100**  
eDHST threshold, 100 mm, PVC-U



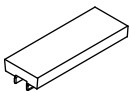
**ZS5401**  
Cover profile for running track groove



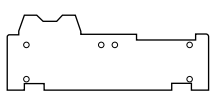
**ZS5402**  
Standard running track



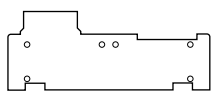
**ZS5302**  
Adapter profile



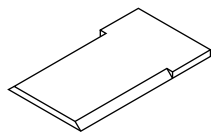
**ZS5406**  
Filler piece for running track groove



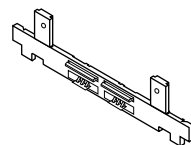
**ZS5604**  
eDHST sealing pad for threshold, sliding sash, and frame



**ZS5605**  
eDHST sealing pad for threshold, fixed sash, and frame



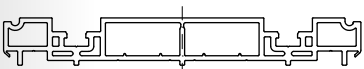
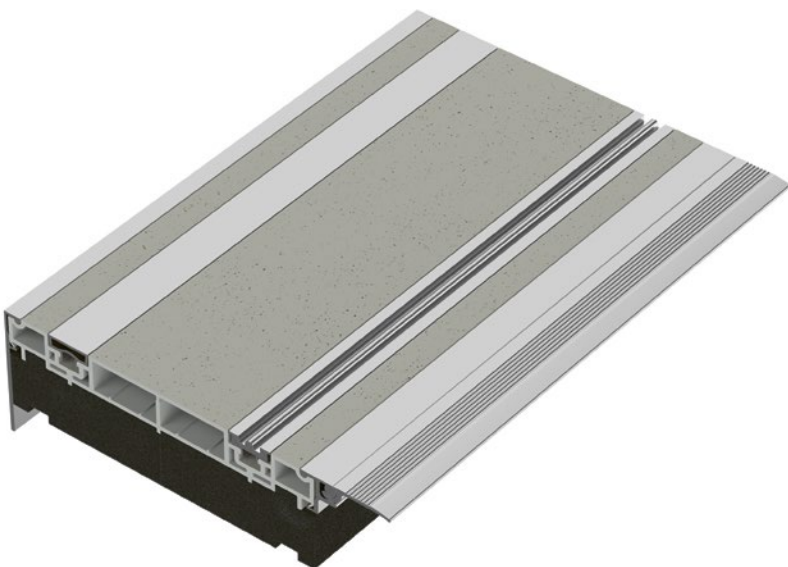
**ZS5606**  
eDHST sealing pad, center section, scheme A



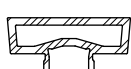
**ZS5608**  
Pre-assembled eDHST threshold end cap with sealing pad for threshold end cap

## levelZer0\_comfort

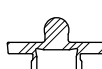
Salamander threshold packages represent only a small selection of the wide range of configuration options available. For challenging terrain, offering full flexibility and the most comfortable running track on the market. For sliding scheme A



**ZS5100**  
eDHST threshold, 100 mm, PVC-U



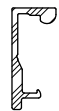
**ZS5401**  
Cover profile for running track groove



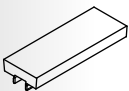
**ZS5404**  
Flush running track



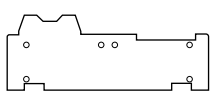
**ZS5403**  
Siegenia comfort running track



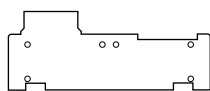
**ZS5302**  
Adapter profile



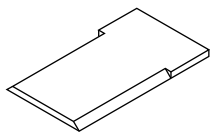
**ZS5406**  
Filler piece for running track groove



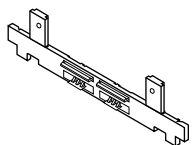
**ZS5604**  
eDHST sealing pad for threshold, sliding sash, and frame



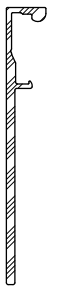
**ZS5605**  
eDHST sealing pad for threshold, fixed sash, and frame



**ZS5606**  
eDHST sealing pad, center section, scheme A



**ZS5608**  
Pre-assembled eDHST threshold end cap with sealing pad for threshold end cap



**ZS5301**  
Cover profile for liquid sealing

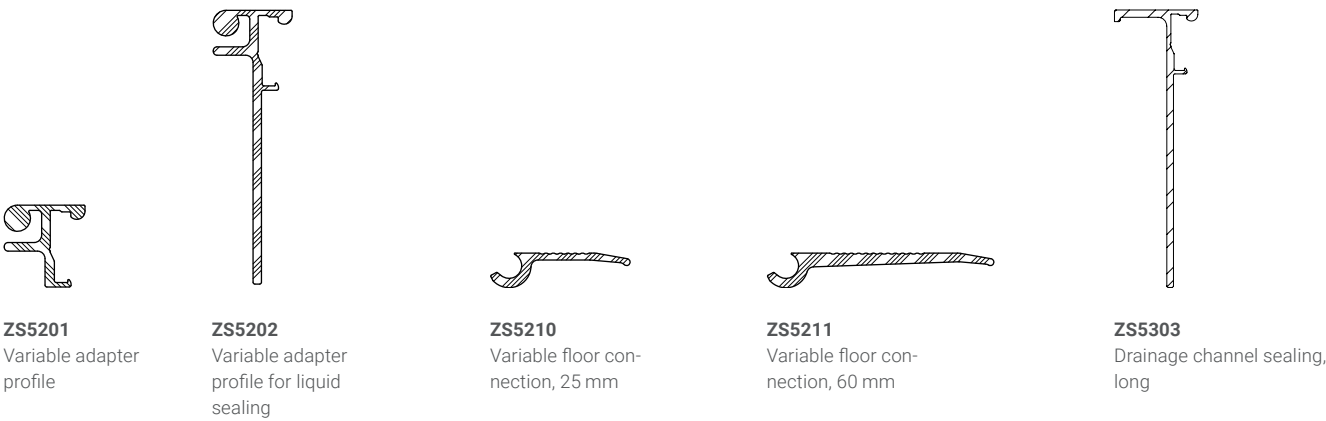
# Additional Threshold Packages

## – Level Adjustment

With Salamander level adjustment profiles, the possibilities are endless – even higher tripping hazards can be easily overcome, allowing for smoother and more accessible entry. Especially in renovation projects or when using a walking aid, this is a true game-changer.



## Optional – Level Adjustment Add-On Package



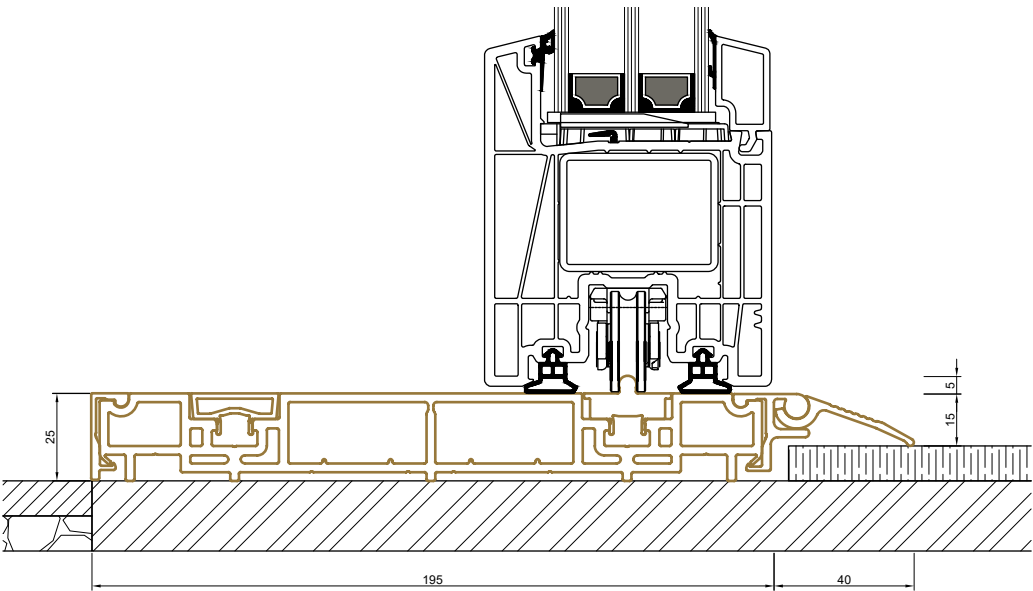
## Threshold Catalog – Parts Listing

Art. No.	Title	Color
ZS5100	eDHST threshold, 100 mm, PVC-U	Greta, similar to RAL 7038
ZS5201	Variable adapter profile	EV1
ZS5210	Variable floor connection, 25 mm	EV1
ZS5211	Variable floor connection, 60 mm	EV1
ZS5301	Cover profile for liquid sealing	EV1
ZS5202	Variable adapter profile for liquid sealing	EV1
ZS5303	Drainage channel sealing, long	EV1
ZS5302	Adapter profile	EV1
ZS5401	Cover profile for running track groove	EV1
ZS5406	Filler piece for running track groove	EV1
ZS5402	Standard running track	EV1
ZS5403	Siegenia comfort running track	EV1
ZS5404	Flush running track	EV1
ZS5501	Fixed Element Adapter	grey
ZS5504	35 mm underbase insulation profile	grey
ZS5505	45 mm underbase insulation profile	grey
ZS5506	55 mm underbase insulation profile	grey
ZS6507	65 mm underbase insulation profile	grey
ZS5604	eDHST sealing pad for threshold, sliding sash, and frame	grey
ZS5605	eDHST sealing pad for threshold, fixed sash, and frame	grey
ZS5606	eDHST sealing pad, center section, scheme A	black
ZS5603	eDHST Threshold End Cap	grey
ZS5607	eDHST Sealing Pad for Threshold End Cap	grey
ZS5608	Pre-assembled eDHST Threshold End Cap with Sealing Pad for Threshold End Cap	grey

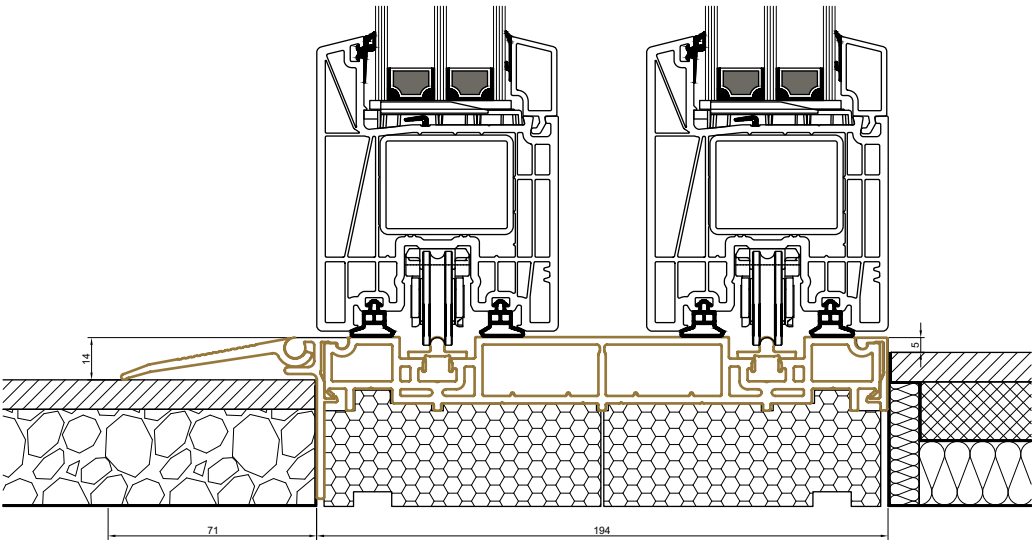


# Installation and Connections

A professional installation benefits architects, window manufacturers, and installers alike: Customer satisfaction and minimal rework are essential to securing follow-up contracts. High-quality lift-and-slide systems such as evolutionDrive\_HST rely on expert installation to ensure smooth operation and long service life. Thanks to its low profile, the Salamander threshold is also suitable as a renovation solution in certain cases



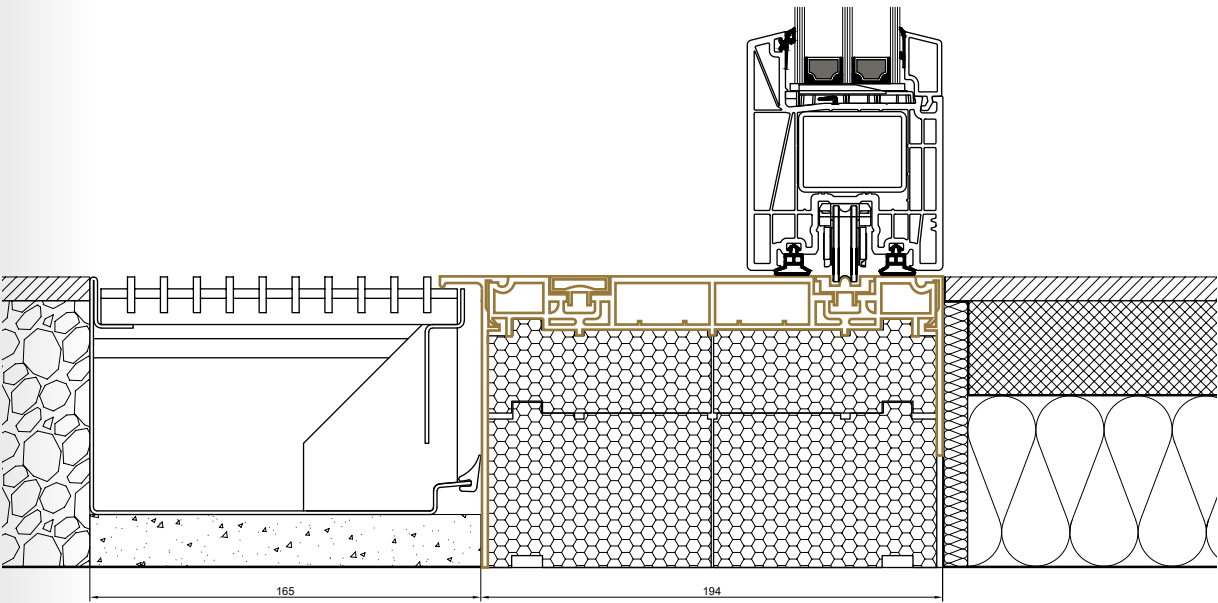
Base grey-silver with short ramp (renovation without UDP)  
The floor threshold must be sealed against pressing water from below.



levelZer0 basic, long ramp without channel (with UDP)

# With Drainage and Channel

The levelZer0 is a threshold system that can be executed either as barrier-reduced or as a true zero threshold. A wide range of drainage channels from various suppliers can be integrated. For an optimal barrier-free transition between the on-site drainage channel and the lift-and-slide door threshold, profile ZS5303 “Long Drainage Channel Seal” is available. This profile also serves as the attachment point for the liquid sealant to be planned for on-site.



levelZer0 – Zero with New Construction – Liquid Sealing (UDP)

## Tip

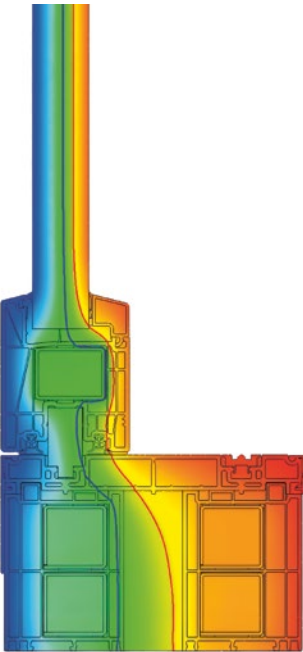
For flush-to-floor zero thresholds, an exterior drainage channel must always be used. As an example, we use a modular ACO Frameline C drainage channel, available in various versions. Depending on the installation situation, you may also use other drainage channels.

For sealing work, we recommend contacting a specialized sealing contractor.

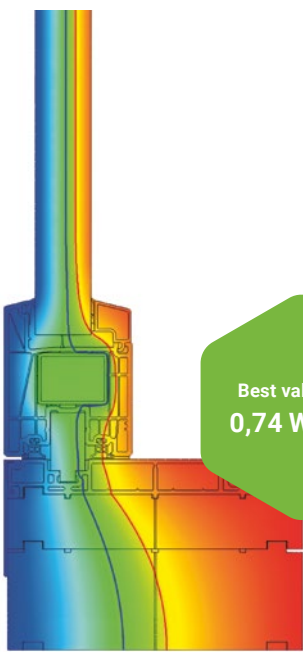


# Substructure Profiles – Combating Thermal Bridges

Salamander lift-and-slide doors offer best-in-class insulation values. With UDPs a height-matching modular component is available, allowing flexible adaptation to the installation situation.



Lift-and-slide door with levelZer0 threshold and standard extension profile  
**Standard value  $U_r = 1,0 \text{ W/m}^2\text{K}$**



Lift-and-slide door with levelZer0 threshold and underbase insulation profile  
**Best value  $U_r = 0,74 \text{ W/m}^2\text{K}$**

When installing lift-and-slide doors with standard extension profiles, thermal insulation can be reduced by up to 35%. By using our underbase insulation profiles, you achieve a highly insulated connection area – a key factor in both renovation projects and new construction.

# Substructure Profiles Material and Benefits

- 1

Sustainable and Recyclable: Recyclable PET raw material
- 2

High Thermal Insulation and Energy Efficiency  
Thermal conductivity  $0.042 \text{ W/m}^2\text{K}$
- 3

Compressive Strength: 162 MPa according to DIN ISO 844
- 4

Excellent Screw Withdrawal Values: Up to 700 N
- 5

Temperature Resistance: From  $-40^\circ\text{C}$  to  $+220^\circ\text{C}$
- 6

Weldable: Profiles can be welded together if required
- 7

Easy Processing: Machinable with standard woodworking tools
- 8

Weather and UV Resistant

## Combination Options 4 components – 11 heights



**ZS5504\_00**  
Substructure heights: 35 mm, 45 mm, 55 mm, 65 mm

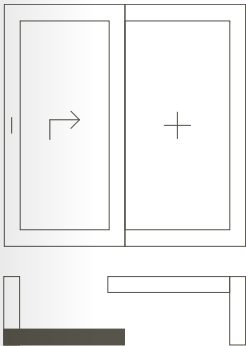
	35 mm	45 mm	55 mm	65 mm
35 mm	70 mm	80 mm	90 mm	100 mm
45 mm	80 mm	90 mm	100 mm	110 mm
55 mm	90 mm	100 mm	110 mm	120 mm
65 mm	100 mm	110 mm	120 mm	130 mm

# levelZero as Part of evolutionDrive\_HST

Thermal Insulation	U <sub>w</sub> up to 0.64 W/(m²K) U <sub>f</sub> up to 1.3 W/(m²K)
Maximum Frame Dimensions (mm)	2500 mm x 6500 mm
Sash Depth	82 mm
Frame Depth	194 mm
Sash Visible Height	100 mm
Frame Visible Height	55 mm
Maximum Threshold Load Capacity	Up to 450 kg per meter



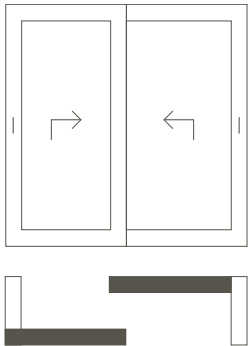
## Planning and Schemes



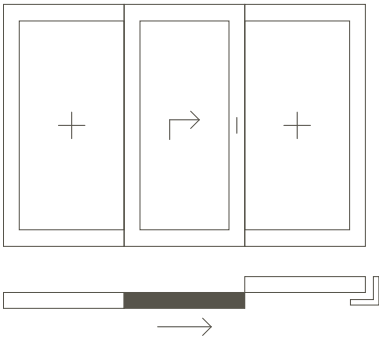
**Scheme A**  
1 sliding sash  
1 fixed glazing  
sliding to the right or left



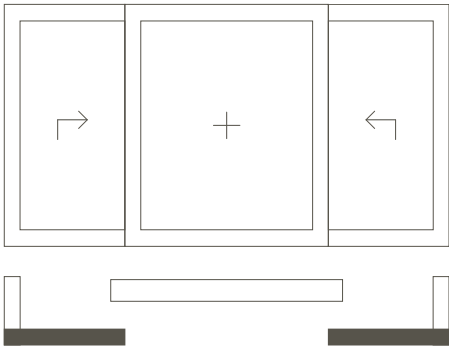
**Scheme C**  
2 sliding sashes  
2 fixed glazings  
sliding left + right



**Scheme D**  
2 sliding sashes  
2 fixed glazings  
sliding left + right



**Scheme G**  
1 sliding sash  
2 fixed glazings  
sliding left and right



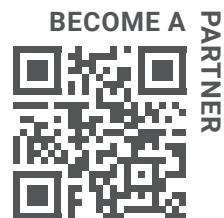
**Scheme K**  
2 sliding sashes  
1 fixed glazing  
sliding left and right

## Salamander Support for Purchase and Planning

We assist you with planning and technical consultation. Our project consultants will answer all your questions regarding planning and application. Naturally, our sales and internal service teams, as well as the planning tool, are always at your disposal.

### Become a Partner?

Join the my Salamander Network and benefit from personalized support, planning assistance, and convenient downloads.



Salamander Industrie-Produkte GmbH  
Jakob-Sigle-Straße 58  
86842 Türkheim, Germany

[salamander-windows.com](https://salamander-windows.com)