

THE LEADING HUMAN RISK MANAGEMENT PLATFORM

Make secure  
behavior  
second nature





Europe's largest  
security awareness training &  
human risk management player

>500

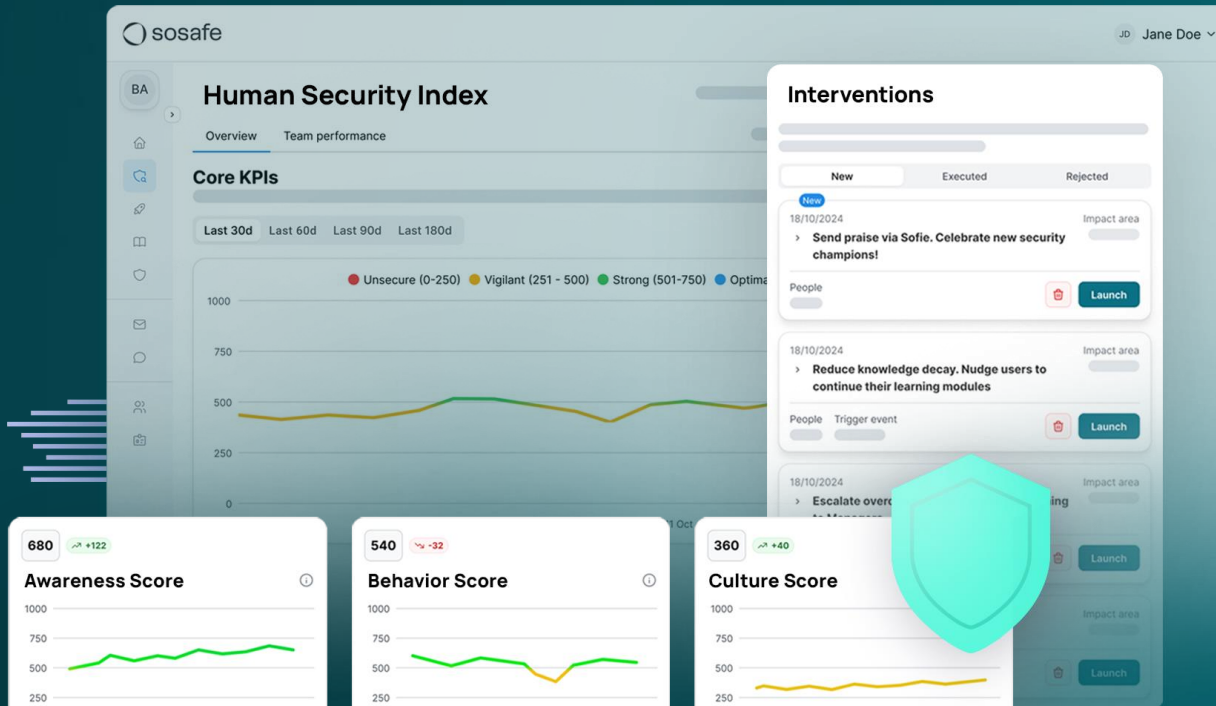
diverse employees

>5,500

customers across all industries

>4.4M

users worldwide



# Trusted by leading global companies



## Why customers love us

- Laser-focus on end-user experience and engagement
- Aiming at real security culture building vs. just compliance checking
- Dedication to positive reinforcement & true behavioural science DNA
- Our absolute commitment to data privacy



Industry: Retail  
Employees: 2,200+

Click rate reduced  
from 20% to 3.5%  
in just 18 months

“



In a world where everybody's overwhelmed with information and doesn't have the time to learn, it's essential that employees receive their learning units cut into very small pieces, and then present it at the point of failure, when the motivation to learn is high. One example is a learning page after you click on a phishing simulation. Five-minute slices of security awareness training fit perfectly into a very busy workday.

**Martin Schmidt**  
Global Director of Digital Advisory, Freudenberg  
Home & Cleaning Solutions



RECOGNIZED FOR EXCELLENCE IN CYBER SECURITY

# Security leaders & analysts agree: SoSafe leads the way

## TOP 3



SOSAFE

# Creating behavioural change **that lasts**

SoSafe's scalability, ease of use, and ability to move the needle quickly on security awareness and risk reduction make it the catalyst for scaling a security culture.



2x

behavioural change at double the speed of standard awareness trainings

< 1 hour

to meet the requirements of key security compliance frameworks

> 50%

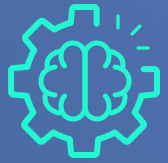
user engagement through gamification and interactive storytelling

70%

users demonstrate active reporting behaviours in the first six months

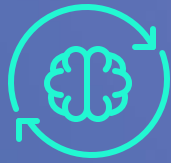
We believe people want to do the right thing.  
**But they need to empowered to succeed.**

We do this by:



### Making training engaging

We use gamification, microlearning, spaced repetition, interactivity, nudging, and storytelling to enhance engagement.



### Simplifying where others complicate

We are laser-focused on simplifying, only delivering learning content based on individual risk profiles through our personalisation engine.



### Reaching people where they are

We go beyond content, offering contextual, continuous, and multi-channel learning opportunities to apply knowledge and internalise secure habits.



### Looking at behaviour holistically

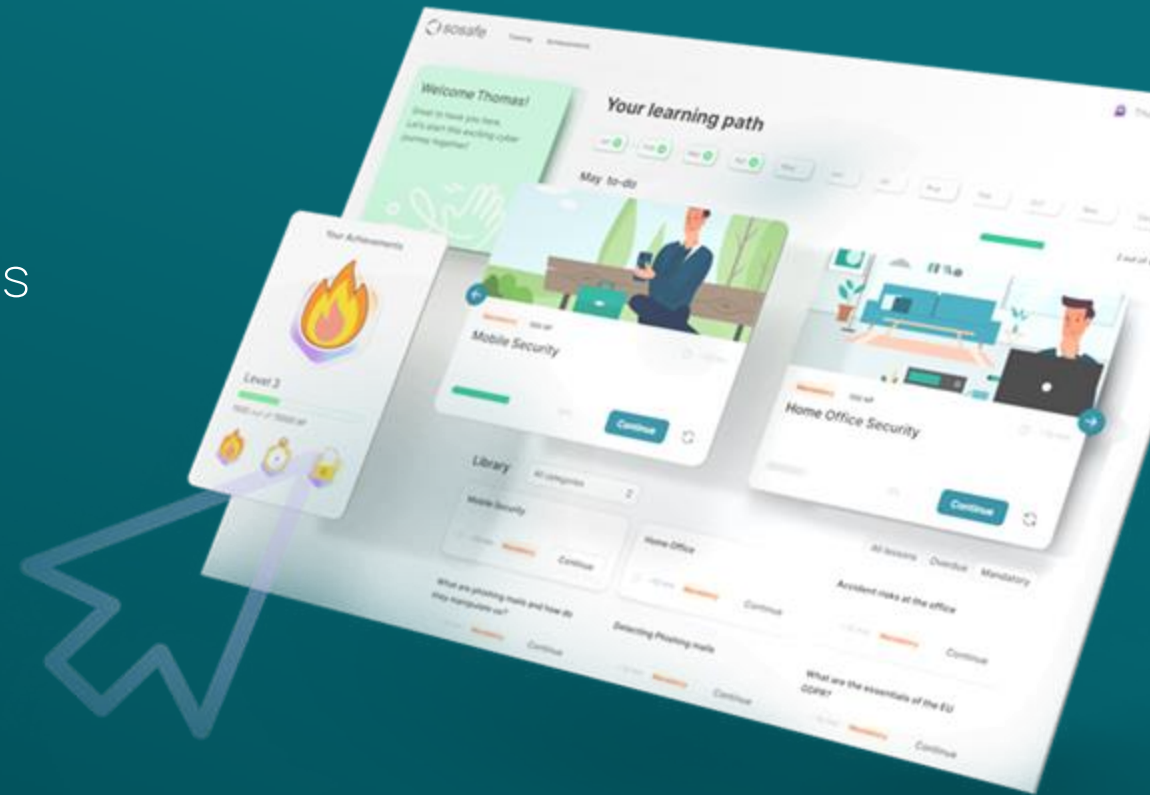
By considering all behavioural drivers, from culture to emotions, we help you address human risk and focus on what matters most.

# Personalized Micro-Learning

Ready-to-use, behavioural science-based awareness training that adapts to evolving user needs

Automatically tailor cyber security training to each user, focusing on relevant content to enable secure behaviours through behavioural science and gamification for a more effective, interactive, and compliant learning experience.

- Maximise impact with bite-sized, personalised learning that fits naturally into daily workflows and adapts to evolving threats and compliance needs
- Motivate and challenge users with gamified content tailored to their role, expertise, work context, and prior knowledge
- Streamline training with dynamic learning paths, progress management, and smart reminders that adapt to individual progress
- Optimise time with targeted awareness assessments that focus on new threats and areas needing reinforcement
- Personalise content delivery through smart surveys that adjust based on work habits, leadership roles, IT responsibilities, and travel patterns



Connected modules covering key cyber security topics

Email Security, Mobile Security, Office Security, Passwords and Data, Internet and Online Tools, Data Privacy, Occupational Safety, Compliance... and more

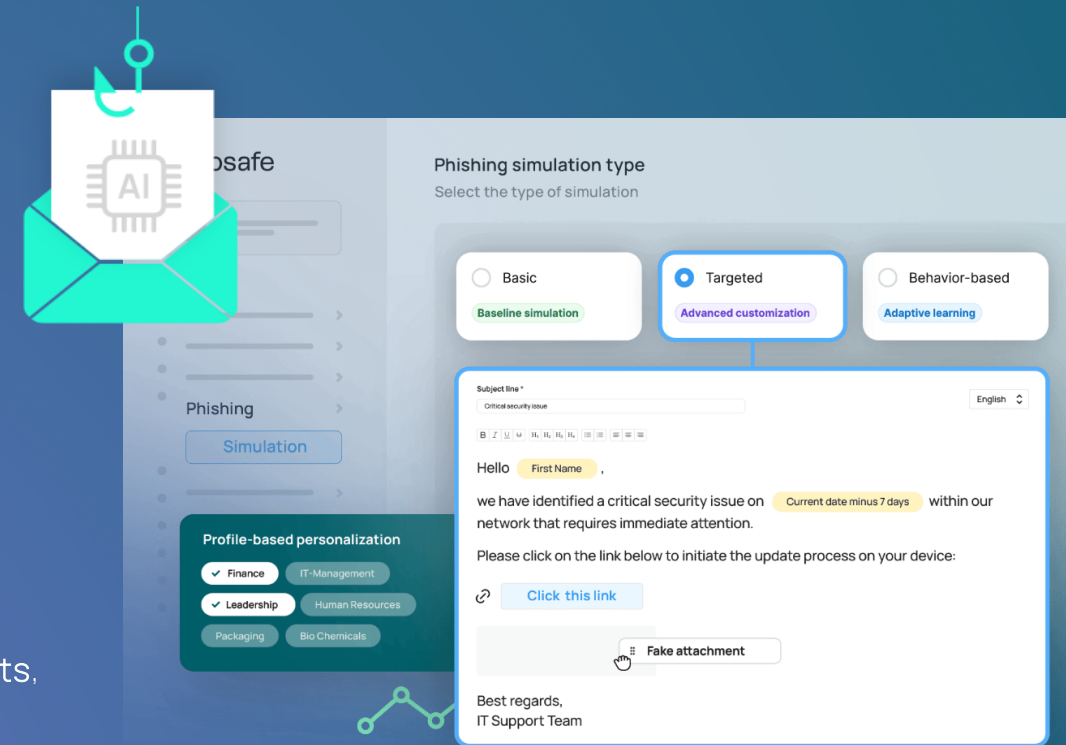


# Multi-Channel Phishing Simulations

Rapidly improve your user resilience against social engineering with individually and automatically tailored phishing programs

A suite of multi-channel, AI-powered social engineering experiences that adapt to employees' specific roles, skills and behaviours **to better prepare them for real-life threats**, while reducing your operational burden.

- Premium industry templates covering multiple scenarios, including Ransomware, Spear Phishing, Social Engineering, Whaling/CEO Fraud, Identity Theft, and many more
- Fostering security champions and creating unique learning moments that hold attention
- Spear phishing campaigns customized to your exact specifications to reduce click rates through a more targeted approach and risk management
- Smart Phishing Report Button that protects from real phishing attacks
- Operational efficiency to minimise administrative workload with AI-powered automation tools and setup support





## PRODUCT PORTFOLIO

# Sofie: AI Security Copilot

Your always-on human security copilot, transforming your workforce into a proactive defence line

Sofie, the AI-powered copilot, **empowers your team with instant** interventions and micro-learning for new threats and offers an AI tool for security questions, reducing the strain on your security team. It works 24/7 to make your team your strongest defence.

- Protects against phishing, saves time, and streamlines communication
- Responds to new attack scenarios, speeding up issue resolutions by automating responses to common security inquiries
- Mitigates vulnerabilities and threats by enhancing security culture, helping to build a stronger security-aware workforce
- Educates employees by sending bite-sized security alerts via tools of your choice (MS Teams or Slack\*), track and monitor the number of employees who have read the alert
- Meets data protections standards, and prepares for audits and compliance

\* Coming soon



## PRODUCT PORTFOLIO

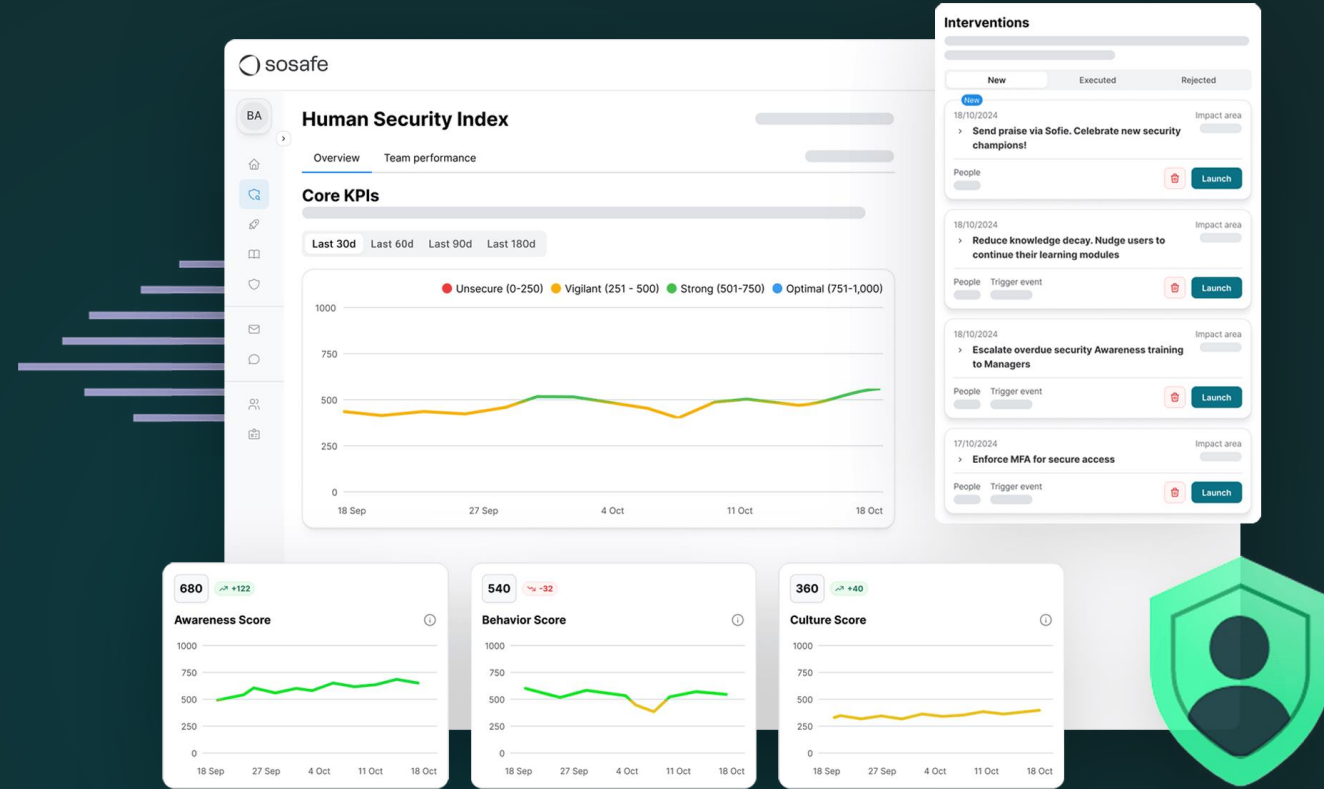
# The Human Risk OS™

## Enabling a holistic approach to Human Risk Management

Human Risk OS™ is a cohesive platform **bringing together** real-time risk detection, enhanced behavioural insights and a well-targeted set of interventions, leveraging data from the tools you already use and trust.

By fostering a proactive, positive security culture, Human Risk OS™ makes it easy to strengthen your defenses and build resilience against human-related security threats.

- Track and analyse user behaviour in real time and identify both risky and secure behaviour
- Quantify the identified risks to understand their impact and take data driven informed decisions
- Elevate your security culture with tailored interventions that close gaps and reinforce strengths before threats arise



'The Human Risk OS'™

SoSafe officially registered the licensed trademark in 2021.

# APIs & Integrations

Transform human risk data into actionable intelligence

Connect with the tools you trust, access the insights you need, and maintain the security standards you require - all through **integrations that just work**. No more jumping between platforms or wrestling with spreadsheets - **just smooth, automated data flows that keep you informed and in control**.

- Connect your tools seamlessly with our API - no manual data handling
- Your dashboards update automatically with real-time risk insights
- Handle user management and compliance reporting easily with integrations
- As you grow, our enterprise integration scales while maintaining security



Do you also want to stay  
two steps ahead of evolving cyberthreats –  
**continuously?**

[Request a demo](#)



SoSafe SE  
Lichtstrasse 25a,  
50825 Cologne, Germany

[sosafe-awareness.com/](https://sosafe-awareness.com/)  
[info@sosafe.de](mailto:info@sosafe.de)  
+49 221 65083800

Connect with one of our international offices

London • Paris • Amsterdam • Berlin • Munich • Lisbon • Dublin • Sydney