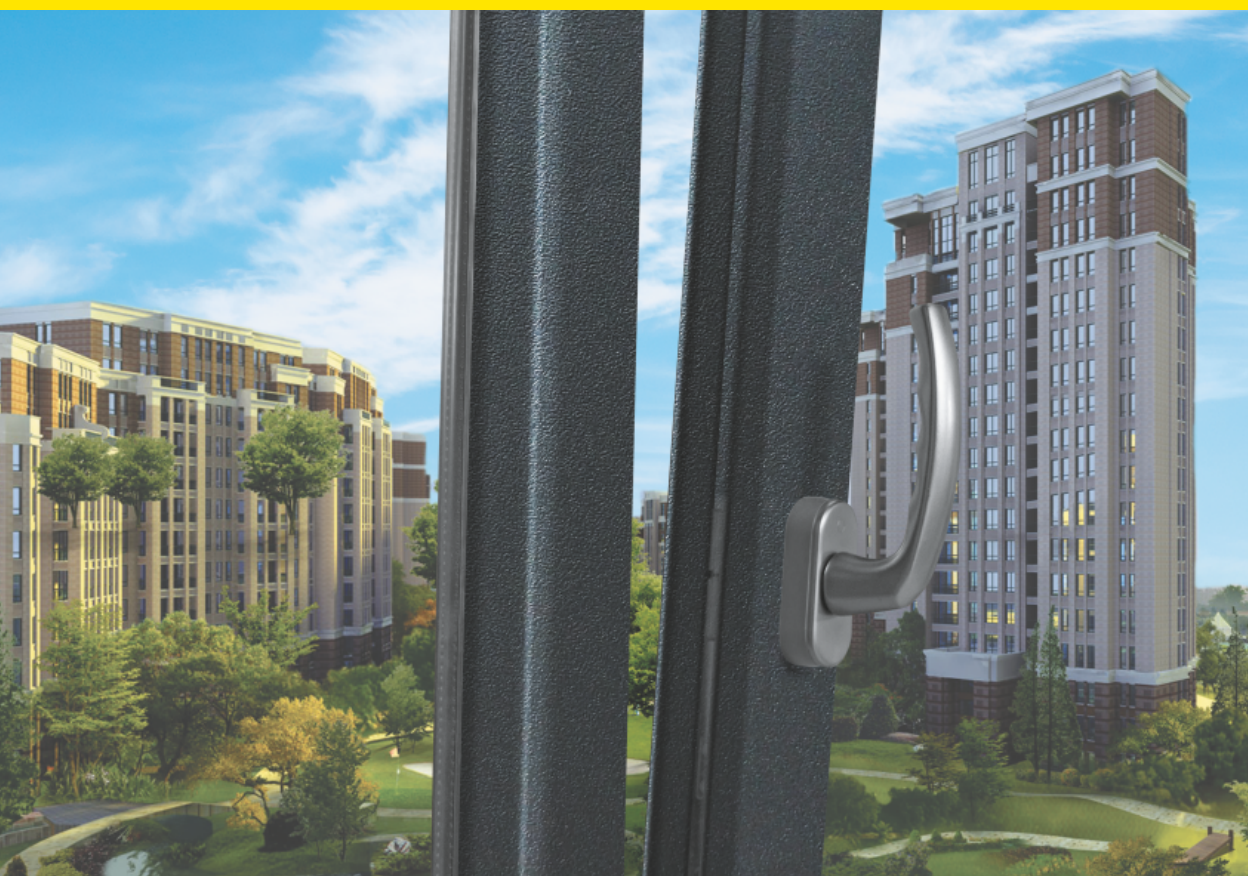


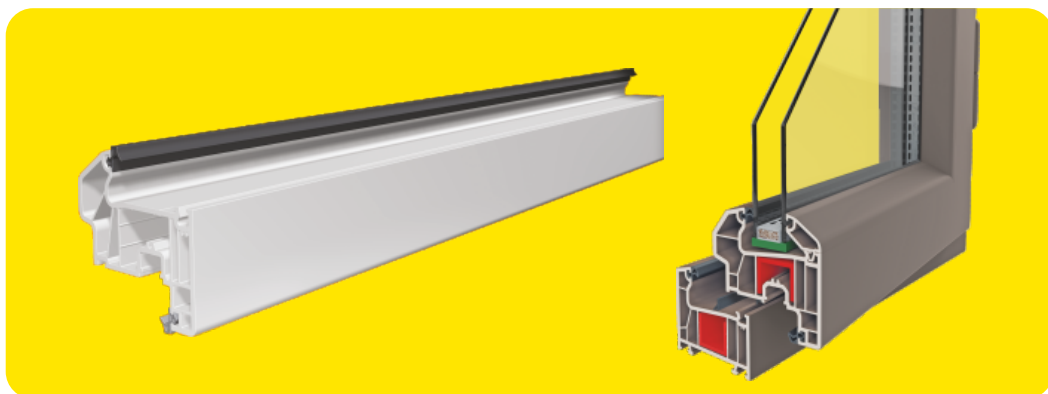
# winhouse<sup>®</sup>

EPDM - TPE SEAL



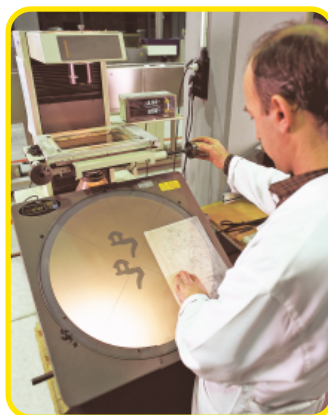
# PROPERTIES of WINHOUSE EPDM SEAL

EPDM is a very special rubber type which maintains its all physical and chemical properties in hot and cold, acidic and basic medium. While it is controlled at excessive degrees in laboratory, the cold down to -40 °C and the hot up to 130 °C is a convenient adaptation range for this rubber type. It is the most resistant polymer against sun and air oxidation and ozone cracks, and chemicals in any type of detergents whatsoever. EPDM profiles which is the only solution for excellent perpetual deformation that is required for sealing on woodworks particularly over high building frontages at excess wind pressures have always been the only choice of those who seek for excellence in automotive, vessel and building profiles.



## OUR PRODUCT RANGE

- ✓ Sulfurous and peroxide EPDM profiles
- ✓ SBR silicone and other profiles from rubber
- ✓ Soft profiles fortified with special fiberglass cord strings
- ✓ Pure rubber hoses
- ✓ Dilatation and head gaskets
- ✓ Special requirements
- ✓ Gaskets with sponges which we develop and its varieties used in automotive field EPDM



## EPDM SEAL PRODUCTION

The mixtures which are prepared in computer environment, with all automatic feeding system, in modern closed mixer with highest quality raw materials at our ISO 9001-certified plant, are passed through all physical and chemical controls and put to production.

Our formulations which contain less sulfur and are near to peroxide properties or with peroxide are of the property that meets all national and foreign specifications and does not spoil the colour and that does not cause vomiting and staining. We come over the characteristic smell of EPDM polymer that could be excessive for some persons with apple aroma. Technical formwork drawings that are originated with AutoCAD in our molding shop are opened quickly in our wire erosion and profile dimensions are magnified 10 times and passed through checking with 0.001 mm precision. Our production is carried out with a user-friendly new type salt in each stage with electronic control, via cold-type extruders with higher capacities in modern salt bath and Microwave/hot air lines that are suitable for environment and human health on today's European conditions. They are delivered in desired sizes or kilos in shrink packaging, box or recoverable plastic drums for big users after their controls to meet all special requirements are performed. While it is possible to inscribe any letters on the profile, and the label with barcode box requested can also be put on the packaging.

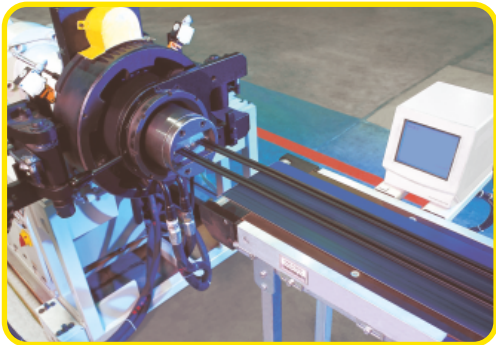


# PRODUCTION of WINHOUSE EPDM SEAL

Raw material, semi-finished mixture and finished product are subjected to every testing in our laboratory according to the properties of the specifications as required. In addition to normal physical and chemical rubber testing, also ageing, deformation testing of finished product in hot and cold medium, and its testing for strength against rain gush and storm can be carried out.



Production Facilities



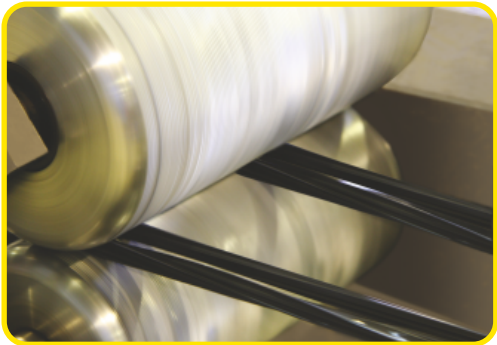
Production Facilities



10 x Projection Measuring Machine



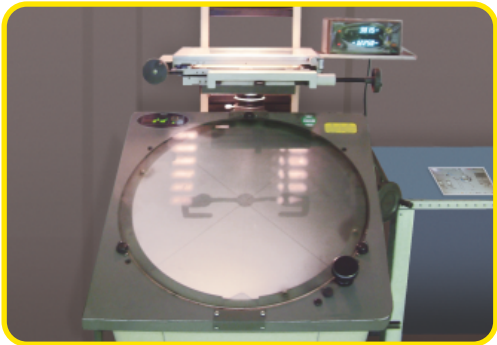
Production Facilities



Production Facilities



Molding Shop



Projection Measurement



Production Facilities

Export to over 100 countries

Sector's export leader

One of the World's largest 3 plastic factories that produce in one plant

450.000 m<sup>2</sup> production area

1850 employees

Over 5000 items in product range



- |                                 |                                |
|---------------------------------|--------------------------------|
| 1 PVC Profile Factory           | 10 Metal Accessory Factory     |
| 2 PVC Pipe Factory              | 11 Metal Systems Factory       |
| 3 Fittings Factory              | 12 Reinforcement Steel Factory |
| 4 PE-PP Sheet Factory           | 13 Hose Factory                |
| 5 Polypropylene Pipe Factory    | 14 Lamination Factory          |
| 6 Gasket Factory                | 15 Profile Loading Area        |
| 7 Polyethylene Pipe Factory     | 16 Superstructure Loading Area |
| 8 PEX / PEX-AL-PEX Pipe Factory | 17 Infrastructure Loading Area |
| 9 Triplex-FKS Pipe Factory      | 18 Raw Materials Storage       |

Türkoba Mah. Fırat Plastik Cad. No: 23  
34537 Büyükçekmece - İstanbul - TÜRKİYE

**P:** +90 (212) 866 41 41 - 866 42 42  
444 9 378 (FRT) - 0 800 219 80 20 **CUSTOMER SERVICE**

**F:** +90 (212) 859 04 00 - 859 05 00

**E:** winhouse@firat.com - export@firat.com  
info@firat.com - musterihizmetleri@firat.com

www.winhouse.com.tr - www.firat.com

**FACEBOOK** winhouse **TWITTER** | **INSTAGRAM** winhousetr  
**FACEBOOK** | **TWITTER** | **LINKEDIN** firatplastik **INSTAGRAM** firatplastiktr



**FIRAT**