

Phytopaŵ

Inspired by Nature, Guided by Science.



About Us

PhytoPaw®

is a pioneering pet health care brand dedicated to improving animal wellness through the power of natural herbal extracts and advanced science.

We specialize in creating high-quality pet products that are both gentle and highly effective, giving pet owners peace of mind.

Our customer-oriented approach means **we put pets and their families first.** Every formulation is crafted with love, rigorous research, and an unwavering commitment to quality.

*Inspired by Nature,
Guided by Science.*



PhytoPaw

Natural and Effective Pet Care Solutions

Our products are designed to tackle common pet health challenges with the proven power of nature.

Each formula, whether for skin, eyes, or oral care, is rigorously tested for safety and efficacy.

We turn nature's gifts into high-efficacy solutions you can trust, providing both fast relief and long-term wellness for your pet.



Phytopaaw



EYE CARE

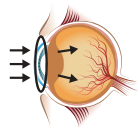
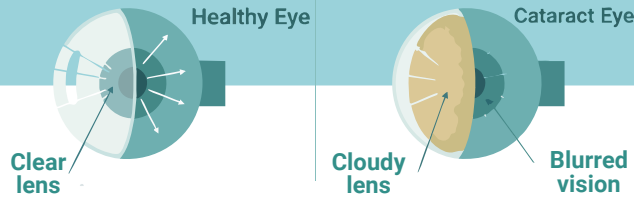


Phytopala

Keep Their World Clearer, Longer

From middle age, dogs and cats become more prone to lens protein aggregation and cloudiness.

Support lifelong eye clarity by protecting the lens micro-environment that drives haze formation.

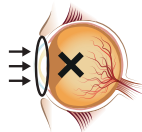


Common Triggers

Aging, oxidative or UV stress, blood sugar imbalance, inflammation, long-term steroid use, or genetic factors.



Lens proteins misfold and clump together



Insoluble Aggregates

Leading to haze, light sensitivity, and blurred vision.

What You Might Notice



Hesitant movement or bumping into objects

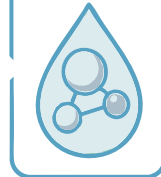


Cloudy or bluish reflection in eyes



Squinting, tearing, or avoiding bright light

Isolate



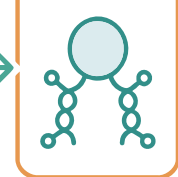
Creates a protective layer that blocks harmful oxidative micro-environments.

Inhibit



Reduces oxidative and inflammatory damage that triggers protein clumping.

Stabilize



Helps maintain normal protein structure to preserve lens transparency.

Benefits of Ongoing Care

Slows down lens opacity progression

Supports clearer, brighter vision



Improves confidence and daily activity in aging pets



ClearSight Eye Drops

(8ml + 0.1g)



Anti-Oxidant | ROS Defender | Hydration



Advanced Cataracts Control

Targets cataracts caused by aging, ocular wounds, and diabetes-related oxidative stress



Unique Dual-phase Packaging

Preserves maximum freshness and efficacy of natural PhytoReviva™ antioxidants



Instant Antioxidant Activation

Botanical antioxidants boost corneal metabolism, fight lens opacity, and restore clear vision



Long-lasting Protective Hydration

Nano-HA B12 complex forms a tear film for lasting hydration and protection.

BEFORE



AFTER



Vitamin B12



Chrysanthemum & Honeysuckle



Sodium Hyaluronate



PhytoReviva™

Phytopaw



Tear-stain Clear Kit

(0.5ml x 30 vials + 15 PCS)



Anti-Oxidant | ROS Defender | Hydration



Persimmon Fruit Extract

Natural deodorizing & antibacterial properties



Dual Enzyme Complex

Lysozyme & Papain for protein breakdown & cleansing



Moisturizing Film

Sodium hyaluronate locks in hydration, relieves dryness



Oxidative Defense

Vitamin B₁₂ + chrysanthemum extract counteract oxidative stress

BEFORE



AFTER



Vitamin E
Protection



EDI
Pure Water



Vitamin B₁₂



Chrysanthemum
Extract



EAR CARE



Phytopaiv



Ear Fresh Kit

(1.5ml x 30 vials + 60 units)



Microbial Defense
Herbal+Silver Complex | Gentle Cleansing



Plant-Based Microbial Defense

Antibacterial & antifungal protection



Deep Cleansing & Wax Softening

Repairs ear barrier & reduces inflammation



Botanical Oil Complex

Dissolves wax & controls odor



Pre-Filled Essence

Effective, convenient, hygienic, single-use swab

BEFORE



AFTER



Aloe Vera
Extract



Witch Hazel
Extract



Citronella
Extract



Sapindus Extract &
Anthemis Nobilis Oil

Phytopa



ORAL CARE



Phytopaiv

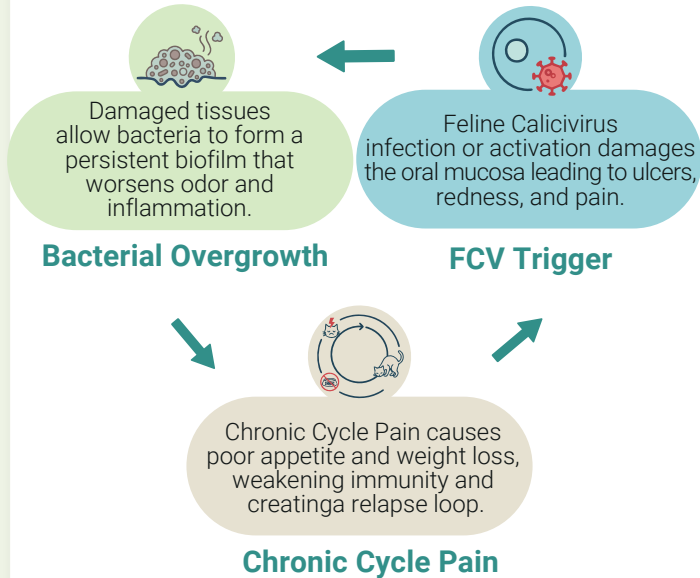
Oral Health Challenges in Cats

Feline Calicivirus (FCV) and Beyond

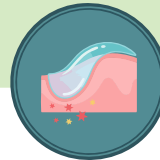
Cats suffering from FCV or chronic gingivostomatitis often experience painful oral inflammation, bad breath, and reduced appetite.



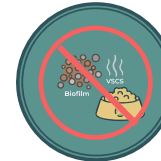
How Oral Inflammation Develops?



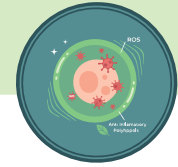
Daily oral protection begins with a Triple-Defense Formula:
Barrier Protection
+ Anti-Biofilm Control
+ Antioxidant Soothing.



1. Barrier Protection
Forms a gentle shield that blocks irritants and helps reduce sensitivity.



2. Anti-Biofilm & Odor Control
Disrupts bacterial biofilm, neutralizes bad breath, and encourages appetite.



3. Antioxidant Soothing
Reduces oxidative stress, calms inflammation, and supports mucosal healing.

Healthier Mouth, Happier Cat!



Fresh Breath



Pain Relief



Improved Appetite



Easy Daily Care



Advanced ORAL Heal Gel

(15 g)



Antiviral | Anti-Inflammatory | Mucosal Repair



Enhanced Protection With PhytoReviva™

A rich botanical antioxidant complex that neutralizes ROS, supports antiviral defense, and reduces inflammation in oral tissues



Long-Acting Tannin Shield

Persimmon tannins slowly release to form a durable mucosal barrier, reducing irritation and protecting against viral attack



Mucoadhesive Healing Gel Base

The carbomer-glycerin matrix adheres to ulcerated areas, offers sustained hydration, soothes discomfort



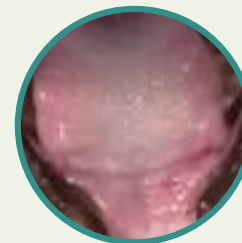
Natural Antimicrobial Support

Lysozyme and Tea Polyphenols help control oral pathogens and maintain healthy mucosal flora

BEFORE



AFTER



Persimmon Tannins



Lysozyme



Tea Polyphenols



Carbomer + Glycerin

Phytopaiv

Prevent Tartar Formation Before It Hardens

Tartar cannot be dissolved by sprays

Only professional scaling removes hardened calculus.

Daily home care helps stop plaque from hardening into tartar, reduce gum inflammation, and eliminate bad breath.



How Tartar Forms?

1. Early Colonizers

Pellicle forms, *Streptococcus spp.* attach.



2. Maturing Biofilm

Anaerobes like *P. gingivalis* expand; toxins cause odor.



3. Plaque Mineralization

Minerals crystallize, forming rough tartar.



4. Gingivitis → Periodontitis

Bleeding, inflammation, tooth mobility.



A Comprehensive Approach to Pet Oral Health

1. Mechanical cleaning

Brushing removes soft plaque



2. Anti-biofilm & Deodorize

Lysozyme + botanicals inhibit biofilm and odor.



4. Long-term Care

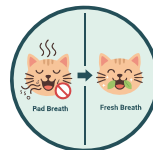
Supports post-scaling maintenance and prevents relapse.



3. Soothe & Protect

Polyphenols calm inflammation and aid recovery.

Brighter Smiles, Fresher Breath!



Halitosis Control



Bleeding Gums Relief



Post-Scaling Maintenance



PlaqueOff Dental Kit

(5ml Plaque Softening Pen x 1 unit
5ml Dental Shield Pen x 2 units
Finger brush x 1 pcs)



Tartar Softening | Enzyme Action | Long Protection



Quick-Acting Tartar Softening

Tetrasodium pyrophosphate breaks down hardened deposits



Dual Enzyme Complex

Lysozyme & Papain for protein breakdown & cleansing



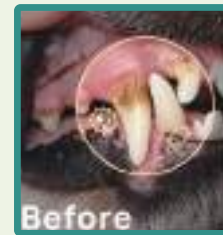
Long-Lasting Hydrating & Protective Formula

Hyaluronic Acid + Zinc gluconate + chitosan lock in moisture and form an anti-plaque barrier



Natural Deodorizing Essence

Persimmon Fruit & Propolis extracts add antimicrobial and deodorizing effects



Lysozyme



Papain



Tea Polyphenols



Zinc Gluconate



SKIN CARE



Phytopia

Pet Skin Troubles: Atopic Dermatitis vs Ringworm

Understanding two distinct skin conditions - and how to choose the right care.

Atopic Dermatitis (AD)



Allergic Inflammation



Triggers

Environmental or food allergens, mites, or microbiome imbalance.



Barrier Breakdown

Lipid loss increases Transepidermal water loss, leading to dry, red, scaly skin.



Itch & Inflammation

Persistent itch worsens inflammation in a vicious cycle.



Secondary Overgrowth

Bacterial growth causes dandruff, greasy coat, and odor.

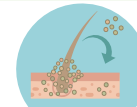
AD Care: ImmuneBalance Skin Spray

Restores barrier lipids, relieves itching, and supports microbiome balance.

Ringworm (Dermatophytosis)

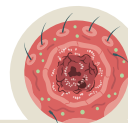


Fungal Infection



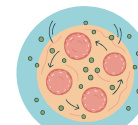
Infection Source

Fungal spores spread by contact, parasitizing keratin tissues.



Lesions

Circular patches with hair loss, crusting, and mild scaling.



Spread & Contamination

Spores persist in the environment and can infect humans.

Ringworm Care: Antimicrobial SkinRelief Foam

Removes fungal spores, soothes irritation, and prevents reinfection with long-last effect.



ImmuneBalance Skin Spray

(80ml | 2.7 fl. oz)



Microbial Defense | Rapid Relief | Gentle Cleansing



Botanical Anti-Allergy Shield

Artemisinin (from Sweet Wormwood) and Sophora root alkaloids form a protective layer that blocks allergen adhesion and helps break the irritation cycle.



Strong Natural Antioxidant

PhytoReviva™ helps modulate local immune responses by calming overactive skin immunity and enhancing protective barrier integrity, reducing hypersensitivity and irritation.



Soothing Plant Synergy

Wormwood and Arborvitae leaf extracts help activate the skin's natural enzymatic defense, relieving redness and overheating caused by immune-related sensitivities.



Triple Skin Barrier Rebuild

A potent complex of sesame - derived ceramide precursors, madecassoside (from Gotu Kola), and honey polysaccharides restores the lipid-water balance, calming itching and promoting repair.



PhytoReviva™, Artemisinin, Turmeric Root, Amla Fruit Extract

Mugwort Leaf, Chamomile, Lavender, Lemon Balm, Cypress Leaf, Arborvitae Leaf



Sesame Seed Extract (Ceramide Precursors), Gotu Kola (Madecassoside), Honey Extract, Kelp Extract

Sophora Root, Juniper Seed, Eucalyptus Leaf, Angelica Root





Antimicrobial Skin Relief Foam

(60ml | 2 fl. oz)

Microbial Defense | Rapid Relief | Gentle Cleansing



Plant-based Microbial Defense

Combats bacteria & fungi and strengthens natural skin barrier with natural extracts



Rapid Sensitive-Skin Relief

Calms inflammation, reduces redness & itching, promotes skin healing



Gentle Foam Cleanser

pH balanced (6.0-7.0), low-irritation formula and cleanses deeply for sensitive pet skin



Soothes & Hydrates

Aloe Vera, Allantoin & Hyaluronic Acid moisturize, restore healthy skin, and control oil & odor



BEFORE



AFTER



Tea Tree Oil & Grapefruit Seed Extract



Mugwort Extract



Aloe Vera Extract & Hyaluronic Acid



Rice Husk Extract

Phytopaiv



Coat Care Outdoor Spray

(80ml | 2.7 fl. oz)



Repels | Purifies | Repairs



Plant-Based Scent Shield

Tea Tree Oil x May Chang create a time-release volatile shield to repel environmental irritants with a natural botanical scent barrier



Bio-Enzymatic Purification

Clove Bud + Sophora Root Alkaloids work enzymatically to break down organic pollutants and support antimicrobial defense



Cooling & Soothing Complex

Peppermint + Wild Thyme Extract deliver a refreshing, calming sensation to ease itching and discomfort



Dual Repair System

Panthenol + Hydrolyzed Collagen deeply hydrate and repair microscopic hair shaft damage, restoring smoothness and skin comfort



Tea Tree Oil



May Chang Fruit Oil



Clove Bud Extract



Sophora Root Extract

Phytopaw

 info@phytopaw.pet

 www.phytopaw.pet

 [Phytopaw_pet](https://www.instagram.com/Phytopaw_pet)

 [Phytopaw](https://www.facebook.com/Phytopaw)



NovoHope

Fast-Melt Functional Films

Dual-path absorption delivers better taste
and stronger results.



Rapid Oral Disintegration (3 sec)



Dual-Pathway Absorption



Multi-Target Synergistic Action



StainAway Oral Film



ShineCoat Oral Film

Function

- **Fast-Acting** - Quicker, more efficient absorption
- **Gentle & Pet-Friendly** - No stomach irritation, less resistance
- **High Bioavailability** - Less waste, stronger efficacy
- **Easy to Give** - No water needed, treat-like convenience
- **Great Taste** - Flavor-optimized for acceptance
- **Ingredient Stability** - Protects actives, precise release

StainAway Oral Film

Fast-melt oral film for clearer eye area from the inside out.

01

Tear Stain Reduction

helps fade brown or reddish tear streaks under the eyes.

02

Fast-Melt Oral Film

dissolves in seconds in the mouth, no water or swallowing needed.

03

Liver & Antioxidant Support

supports metabolism and reduces stain-causing compounds from within.



Before



After

ShineCoat Oral Film

Fast-melt oral film that nourishes skin and coat from within.

01

Shiny, Soft Coat

helps restore a healthy sheen and smoother fur texture.

02

Stronger Hair & Less Shedding

supports hair strength and reduces excessive shedding.

03

Skin Barrier & Omega-3 Support

Supports the skin barrier with Omega-3 and key nutrients.



Before



After