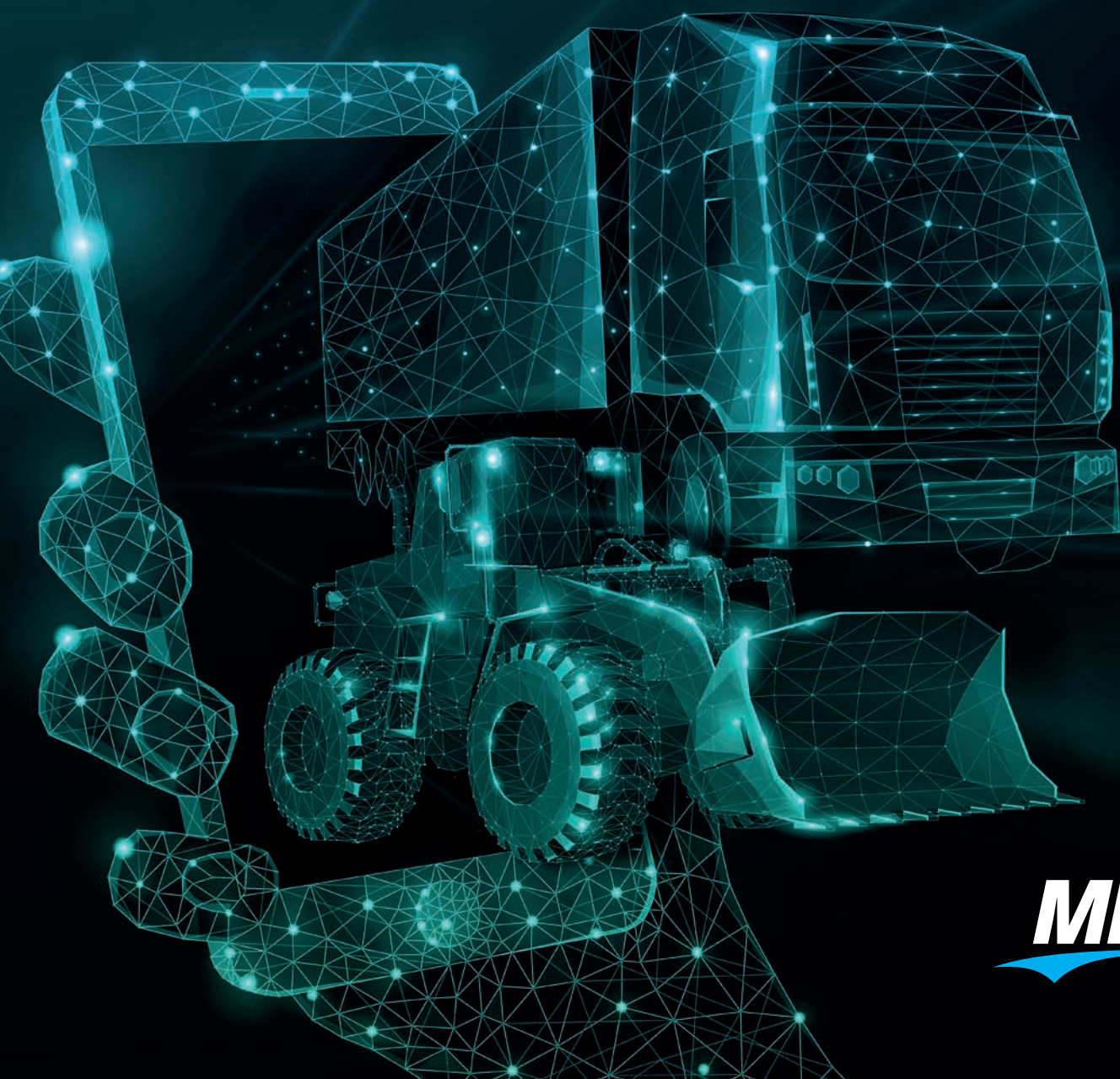


Connected vehicles and machines the foundation of digital transformation



MDT

The world of mobile machines is increasingly networked and digital.

This creates an incredible amount of potential.

Our task is to support companies in transforming their core technical business into digital services and business models.

While service processes are sometimes still laboriously carried out by telephone and machine breakdowns dominate everyday life, future service technicians will connect live with the machine and thus ensure optimal support. The software versions of the machines are kept constantly up to date, service cases are diagnosed remotely and the user is helped to be productive again in the shortest possible time.

With our MACHINES.CLOUD, ANYONE can launch their own telematics platform on the market in no time at all and design new services and business models.

Ready-made modules for evaluations and workflows ensure a quick and easy start. With our support, we ensure a worry-free start to the digital future.

A rocket launch with us into the digital world of networked machines?

Let's connect...

A holistic approach

Everything under one roof

With our support, we help you to take your business to the next level. The holistic approach ensures a pleasant journey into the digital world.

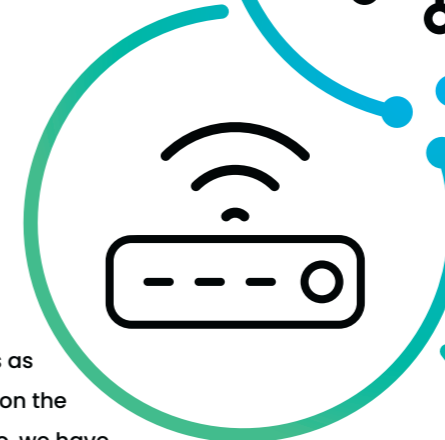
Software

Our MACHINES.CLOUD is the digital remote access to your mobile units. This is where you design your evaluations and workflows and thus a large part of the visible customer benefit.



Hardware

Different demands require different hardware platforms as a basis. Depending on the application scenario, we have access to a mature hardware portfolio.



Service

We configure your hardware, provide support with installation, set up the cloud for you and are happy to pass on our findings and recommendations from other projects to you.



The unique live widget establishes a direct data channel to the vehicle if required and delivers measurements by the second.



Our company offers solutions that reduce emissions of soot particles and nitrogen oxides, both as original equipment and for retrofitting.

In view of the strict emissions regulations in London, we have retrofitted several bus fleets with our SCRT system (Selective Catalytic Reduction + Trap). This in turn is linked to the TCG-4 data module, which reads relevant parameters from the vehicle bus and forwards them seamlessly to the MACHINES.CLOUD.

This gives bus operators access to current and historical performance values, locations and status reports. This allows them to ensure that everything is running smoothly and intervene in good time if necessary.

Jan Ebbing
former CEO



The launch of our telematics system has improved the efficiency and transparency of our processes.



We, the Scheuerle vehicle factory, are specialists in the field of heavy-duty transportation. The availability of our vehicles is extremely important for our customers. If there is a service case, it is necessary to solve the vehicle problems as quickly as possible.

Since the integration of MACHINES.CLOUD, which we call the "TII Cloud" thanks to our own branding, vehicle information can be conveniently called up at any time and resources such as spare parts and service personnel can be planned in a targeted manner. This saves time and offers a clear advantage, as the service staff know directly how to solve the customer's problem.

We also use the data obtained to proactively alert customers to upcoming maintenance and provide spare parts in good time.

Alexander Bäuml
Head of Customer Service

We bring users and producers together

Our history

Since our foundation in 2002, we have continuously developed into one of the leading providers of telematics solutions. We are convinced that digitalization is the key to the future viability of companies and are passionate about providing our customers with the best solutions. Our history is characterized by innovations and new challenges that have driven us to always keep our finger on the pulse and to continuously develop ourselves further.



2002

Founded as a research and development department in a well-known construction group



2017

Spin-off to the free market and focus on users



2019

Integration into the Wiedemann Group, a leading company for the digitalization, automation and electrification of mobile machinery.



2020

Takeover of STW's entire cloud business including well-known OEM customers.



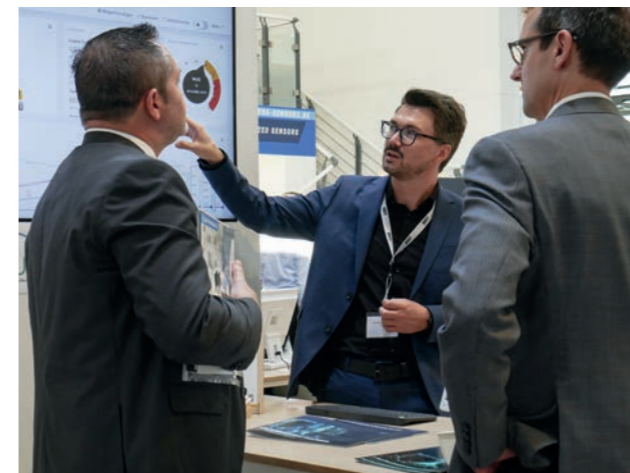
2023

Over 100 customers and 7,500 units are networked on our cloud.



The operations center of our innovations

This is where creative ideas are born, strategies are developed and important project steps are discussed.



Successful together

Networked people form the basis for the success of networked machines.



With the MACHINES.CLOUD, we will drive forward the strategic development of the digitalization and networking of our working platforms.



Thanks to the integration of the open MACHINES.CLOUD, we were able to implement the RUTHMANN TECHNOLOGY CONNECT platform for all our work platforms.

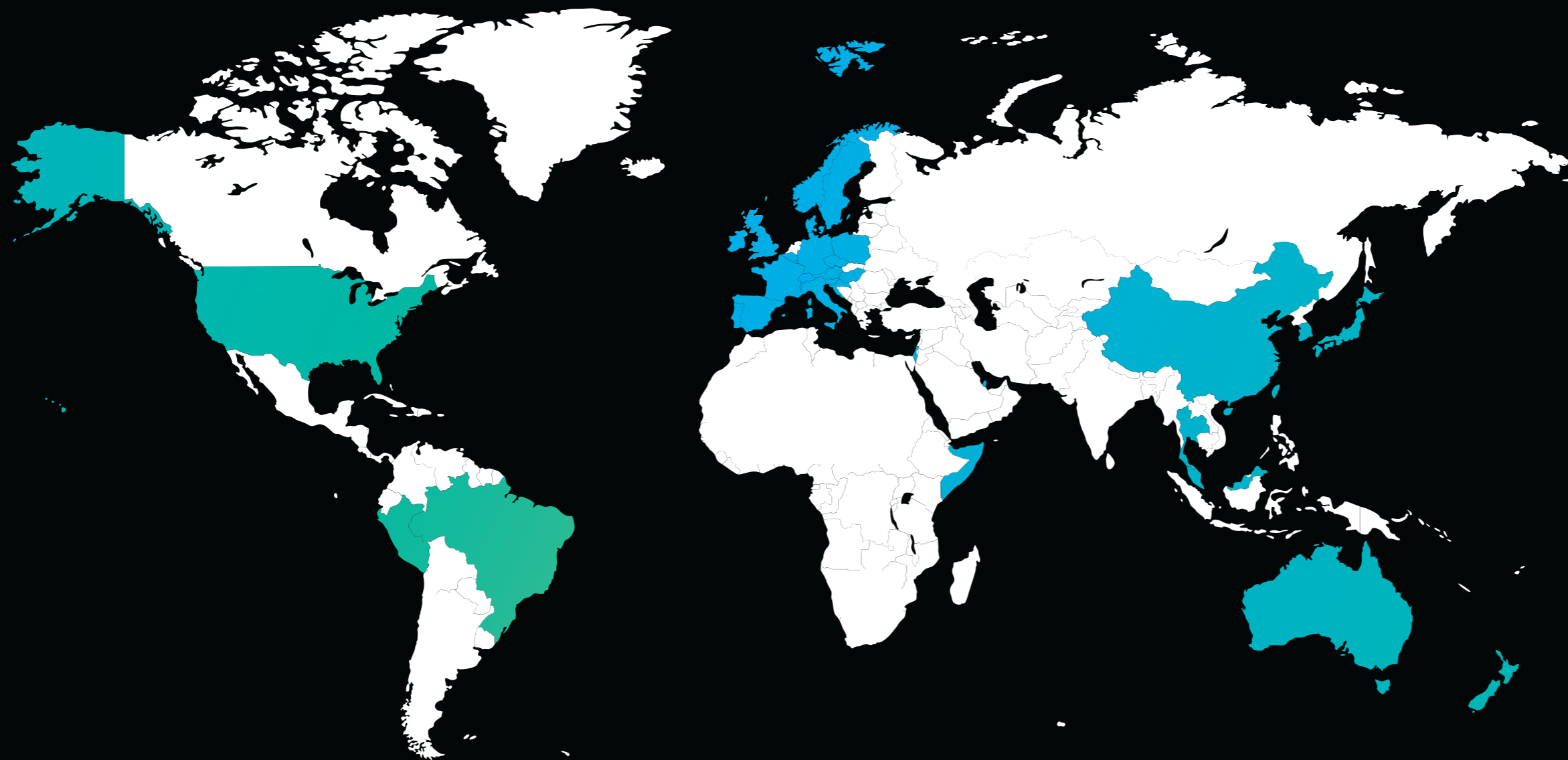
This integration has noticeably optimized our processes. When faults occur, we can now often find solutions over the phone, which reduces the need for on-site technician visits. If an on-site visit is necessary, we can send the technician out in a targeted manner and with the right spare parts thanks to the precise machine data.

This has not only contributed to more efficient problem solving, but has also allowed our staff to make better use of their time. The end result? A noticeable increase in machine availability and a reduction in unnecessary costs.

Jens Schäfer
Service technician

Our MACHINES.CLOUD in numbers

Worldwide network



Our MACHINES.CLOUD is growing continuously and already connects more than 7,500 devices from over 100 customers worldwide. On the world map below, you can see where our cloud solution is currently in use, indicated by colored regions.

Our success is not just a snapshot - we are recording an annual growth rate of 35%. Become part of our global network and benefit from the flexibility, efficiency, innovation and speed of our cloud solution.

> 100
Customer accounts



> 7.500
Devices



35%
Annual growth rate

With MDT's cloud solution, we visualize fuel savings and the positive environmental impact of our technology.

2024

PUNCH | Flybrid

In a time of rising energy prices, we at PUNCHFlybrid are continuously developing solutions to reduce the fuel consumption of mobile machinery. Our flywheel energy storage systems are designed for a wide variety of off-highway machines. They reduce the load on the combustion engine and contribute to more efficient fuel use.

We use the MACHINES.CLOUD to present the added value of our technology to our customers and partners in a transparent manner at all times. This enables us to generate detailed reports that show both the energy saved and the reduction in emissions. With the support of MDT, we have a robust foundation to continuously innovate and maximize the benefits of our solutions.

Tobias Knichel
Managing Director

2022

CO₂

2016

Competence & passion

A strong Team

Our team is a group of passionate experts who specialize in supporting our business partners in all aspects of their machine connectivity needs. From the design of the digitization project to the configuration of the hardware to the setup of the cloud application, we collaborate closely with the business partner to ensure that the needs of the business are met. What makes us special is that we share a passion for innovative technology and a commitment to working together as a dedicated team.



Johannes Stephan
CEO, B.A.

Johannes is particularly concerned with internal and external business development in the context of holistic organizational development.



Lutz Mahle
Head of Software Development
Backend Expert

Lutz looks after our entire tech stack and in particular continues to develop our backend.



David Burger
Software Engineer, B.A.
Frontend Expert

As a full-stack developer, David is responsible for the further development of our front end as well as special customer projects.



Johannes Horst
Software Engineer, B.A.
Machine Learning Expert

Johannes is working on new features for predictive maintenance.



Daniel Scheumann
Head of Sales, M.A.

Daniel works closely with our customers and partners to help them take full advantage of the digitization and connectivity of their machines.



Manuel Roth
Service Manager
Technical Support

As service manager, Manuel supports our customers with technology and hardware. His topics are hardware configuration, installation support and diagnostics.



Theresa Krauberger
Partner Managerin, B.A.
Customer Support

As Partner Manager, Theresa is the central point of contact for our customers and supports their further development.



Helmut Gansmüller
Software Developer
Cloud Support

Helmut supports our customers in the IT helpdesk with daily questions about the cloud and helps them to make rapid progress.



Lissy Peukert
Marketing Managerin, B.A.

Lissy gets us talking. With her ability to transform technology into clear messages, Lissy positions us effectively in the market and ensures a strong brand presence.



Maximilian Vögerl
Marketing Campaign Manager

Maxi manages our outbound campaigns and ensures greater visibility in the market.

Satisfied customers are our trademark

Our partners from the construction industry:



Our partners from the industry:



Every successful project starts with a good conversation.

We would be happy to discuss the possibilities of networked machines and digital services with you. Let's talk...

Modern Drive Technology GmbH

Rettichstraße 7, 92318 Neumarkt

+49 9181 50980-0

info@moderndrive.de

www.moderndrive.de