

INABA DENKO

Style that blends indoors

SLIMDUCT MD

Indoor AC Trunking



INABA DENKI SANGYO CO., LTD.

Overseas Sales Department INABA DENKO Div

10F, 4-11-14, Itachibori, Nishi-ku, Osaka, Japan, 550-0012

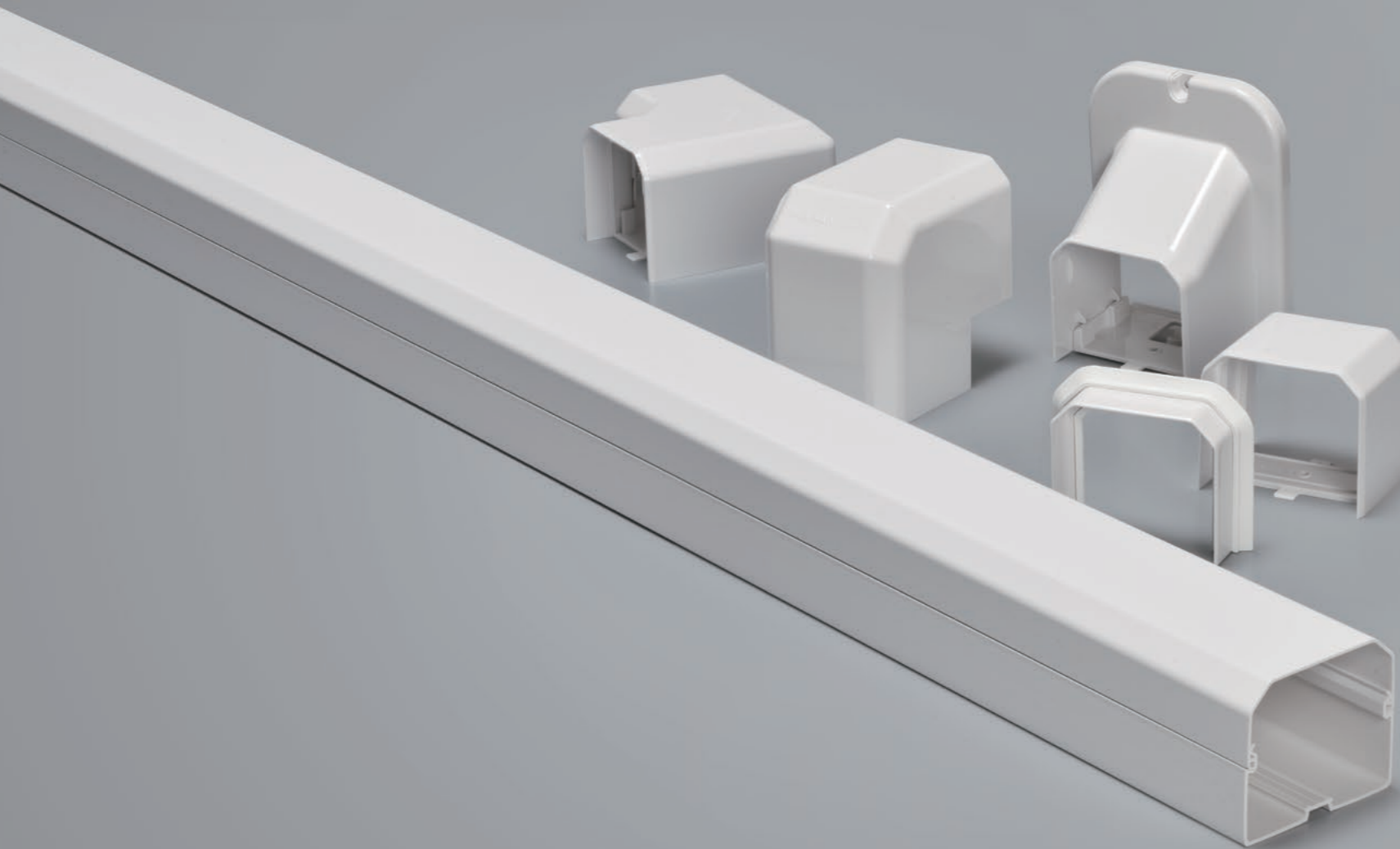
Tel: +81-(0)6-4391-1951 Fax: +81-(0)6-4391-1958

E-mail: sales-inabadenko@inaba.co.jp <https://www.inaba-denko.com/en/>



Discreetly complements any interior

Stylishly designed, SLIMDUCT MD creates a clean, unobtrusive finish.



Product Info



Sleek rectangular profile

Designed to match the clean lines of indoor units for a seamless, integrated look.



SLIMDUCT MD is made from flame retardant materials*.

*Excludes some items.

Attention to Detail

Small details that make a big difference to the final finish. Thoughtful fittings help achieve a perfectly seamless look.

1 No visible screws



SLIMDUCT SD

SLIMDUCT MD

Unlike SLIMDUCT SD, all fixings on SLIMDUCT MD are hidden.

2 Screw-cover cap



Without cap

With cap

Some fittings include screw-cover caps to conceal fixings for a clean, seamless look. (MP, MW)

3 Seamless connection



Without MS

With MS

MS fitting eliminates gaps between the indoor unit and trunking for a seamless finish.

Specs

SLIMDUCT MD series

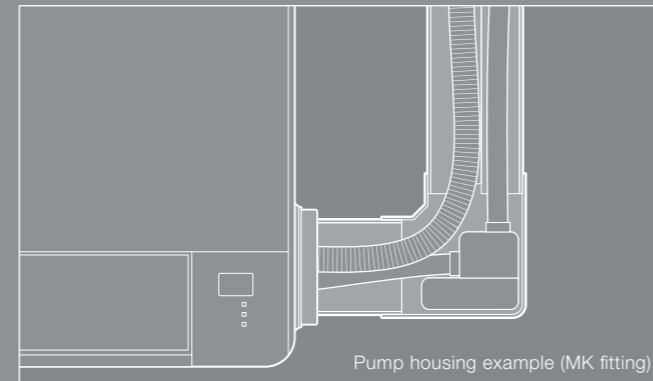
| | |
|-------------------|--|
| Temperature Range | -20 ~ 60°C |
| Application | Wall Mounted |
| Material | Rigid Polyvinyl Chloride (Flame Retardant) *Excludes some Items REACH Compliant |
| Colour | White |

Maximum size piping combinations

| Item No | 10x10mm Insulation Thickness |
|----------|---|
| MD-751-W | 1/4" x 3/8" ~ 1/4" x 1/2" |
| MD-851 | 1/4" x 3/8" ~ 1/4" x 1/2" or 1/4" x 3/8" ~ 3/8" x 5/8" |

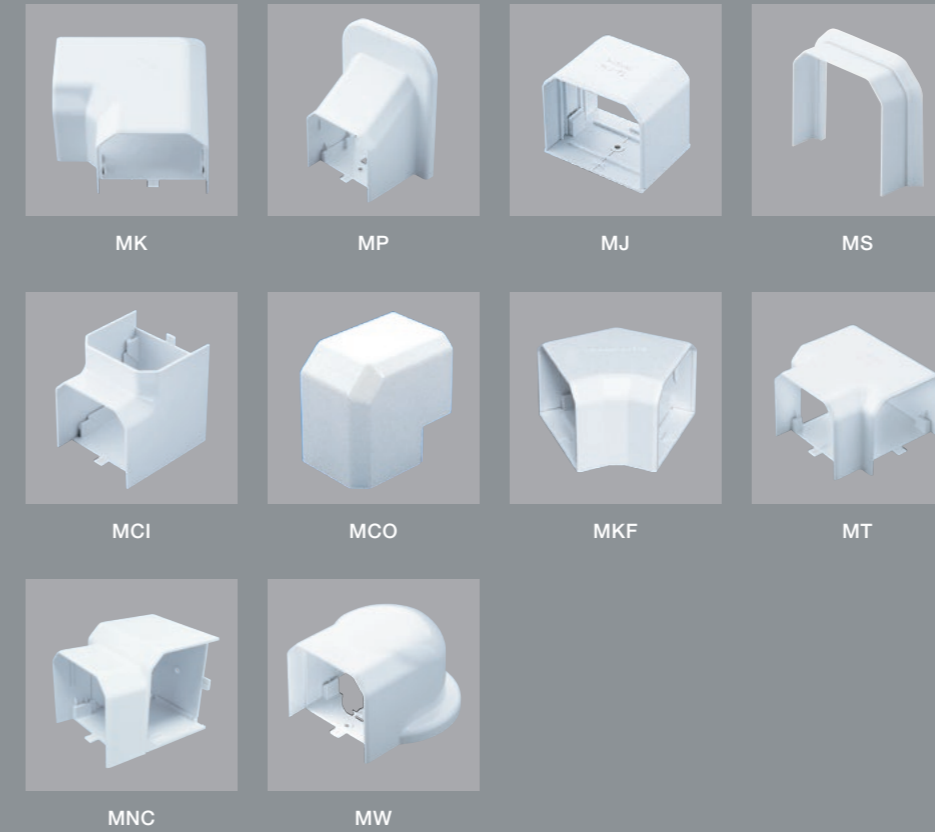
*Includes insulated drain hose (DSH-14)

Compatible with a wide range of pumps.



Note: Installation methods and usage conditions may vary by manufacturer. Please follow each manufacturer's instructions. INABA DENKO does not guarantee pump operation or performance.

Fittings



Installation Example



A clean, seamless installation using SLIMDUCT MD with MK, MP, and MS fittings.