



# Product Guide

High-Tech Hoses & Connection Systems



## Five good reasons why you should be a Masterflex customer

### About Masterflex

As a globally operating corporate group, Masterflex specializes in solving complex connection challenges. We can now boast over 25 years worth of experience in the development, manufacturing and processing of high-tech spiral hoses. Our in-depth material and technological expertise helps us turn the most sophisticated high performance plastics into real products, which set international standards. Our core values determine our work philosophy and connect us directly with the whole group.

### Masterflex – Connecting Values

#### 1 What makes us special

Customized hose solutions or products from stock? Whatever you require, we have the right products for your application. We solve connection tasks using high-tech plastics and technically sophisticated

fabrics. Here lies our expertise and our passion. We offer added value for our customers with our many years of experience in the field of polymer materials, technically sophisticated fabrics and their processing. From the first on-site consultation and the status analysis through to the development and production of the suitable products - we're there to support you throughout the whole process with our innovative complete solutions.

*Custom-made and all from one supplier.*

#### 2 Why you can always count on us

You can always rely on the constantly high quality of our products. Our products meet even the most stringent of national and international standards. This is a basic demand we place on ourselves. Whether heat, cold, extreme conditions or exposure to chemicals, our products prove themselves through their incredible durability and the long-lasting safety they bring. No matter how good our products are now, we are always working on newer and better ones for the future.

*Your satisfaction is our greatest success.*

#### 3 We make it possible for you

We are as flexible as the very materials we use. We tackle any challenge, because extraordinary tasks require extraordinary solutions. And that's exactly what we offer. With our in-depth specialist know-how, we develop customized product solutions for your specific application situation. You need a product quickly, require an unusual combination of materials or a delivery "just in time"? With our quick reaction and delivery times, we're the perfect partner for you: *Because in our business, reliable connections mean much more.*

#### 4 We're there where you need us

We develop sophisticated and customized products with greater customer benefits. For this reason, our highly experienced sales team is spread worldwide, nearer to wherever you need us. As a fundamentally strong development partner, we have our eye on the market and develop cutting-edge solutions for your specific tasks. At all of our locations throughout the world, our products are manufactured with our renowned German Engineering. This guarantees high quality, short distances, quick reaction times and the direct connection to you, the customer.

*Consultation-oriented, personal, quick and expert - that makes the difference!*

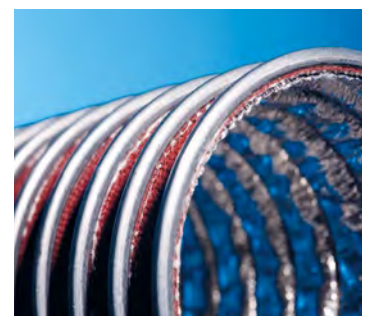
#### 5 Quality, which speaks for itself

Visionary ideas drive us forwards and are the source of our own product developments and innovations. Our creations are produced with renowned German Engineering expertise. Our Sales, Engineering and Production Teams work seamlessly to provide you with the best results. This guarantees international quality standards, worldwide. Whatever we do, we always take great care of the environment. Resource-conserving processes and sustainability are our contribution to the environment.

*Products and Services from Masterflex - we create values ...and connect them!*

# Contents

<b>1</b>	Abrasion-Proof Suction and Transport Hoses made from PU/ hardly inflammable	4-8
<b>2</b>	Suction and Transport Hoses made from PVC/EVA	9-10
<b>3</b>	Microbe and Hydrolysis Resistant Hoses	11-12
<b>4</b>	Food and Pharmaceutical Hoses	13-15
<b>5</b>	Antistatic and Electroconductive Hoses	16-19
<b>6</b>	Air-Conditioning, Ventilation and Welding Fumes Hoses	20-21
<b>7</b>	Exhaust Gas Hoses	22-24
<b>8</b>	Temperature Resistant Hoses to +1100 °C	25-29
<b>9</b>	Chemical Hoses	30-32
<b>10</b>	Customised Clip Hoses	33
<b>11</b>	Pneumatic Tubing	34-37
<b>12</b>	PU-Lined Pipes and Pipe-Bends	38
<b>13.1</b>	Installation and Connections (Clamps)	39-41
<b>13.2</b>	Installation and Connections (Plastic Connectors)	42-46
<b>13.3</b>	Installation and Connections (Metal Connectors)	47-50





## Abrasion-Proof Suction and Transport Hoses made from PU

**Suction and transport hoses made from polyurethane, especially suitable for abrasive transport goods, excellent durability**

### Flamex B-F se



PU Film Hose, light duty, highly flexible and compressible, hardly inflammable acc. to DIN 4102 B1

#### Applications

- Predictive hose against mechanical wear
- Hardly inflammable (acc. to DIN 4102 B1) transport hose for abrasive solids
- Wood processing machines
- Shavings extractions in wood processing

#### Available in:

DN 40 - DN 400  
Color: transparent  
Stock lengths: see internet  
max. production length: 25 m dep. DN

#### Temperature Range

-40 °C to +90 °C  
peaks to +125 °C

### Flamex B-F se for Machining centers



PU Film Hose, light duty, highly flexible and compressible, hardly inflammable acc. to DIN 4102 B1

#### Applications

- Flame retardant transport hose for abrasive solids
- Woodworking machines
- Chip suction at CNC controlled machining processing machines
- Extraction systems with increased extraction capacities
- Predictive hose

#### Available in:

DN 200 - DN 400  
Color: transparent  
Stock lengths: see internet  
max. production length: 25 m dep. DN

#### Temperature Range

-40 °C to +90 °C  
peaks to +125 °C

### Flamex B se



PU Suction and Transport Hose, lightweight and flexible, hardly inflammable acc. to DIN 4102 B1

#### Applications

- Predictive hose against mechanical wear
- Hardly inflammable (acc. to DIN 4102 B1) transport hose for abrasive solids
- Wood processing machines
- Shavings extractions in wood processing

#### Available in:

DN 40 - DN 500  
Color: transparent  
Stock lengths: see internet  
max. production length: 25 m dep. DN

#### Temperature Range

-40 °C to +90 °C  
peaks to +125 °C

# Abrasion-Proof Suction and Transport Hoses made from PU

## Master-PUR LF Trivolution



PU Suction and Transport Hose, very lightweight, permanent antistatic, surface resistance  $< 10^9$  Ohm, microbe-resistant, hardly inflammable acc. to DIN 4102 B1

### Applications

- Highly flexible spiral hose for suction and transport of abrasive solids, liquids and gases, fine-grained particles, e.g. dust and powder
- Protective hose against mechanical wear
- Oil mist extraction/suction
- Hardly inflammable acc. to DIN 4102 B1

### Available in:

DN 40 - DN 400  
Color: transparent  
Stock lengths: see internet  
max. production length: 25 m dep. DN

### Temperature Range

-40 °C to +90 °C  
peaks to +125 °C

## Master-PUR L Trivolution



PU Suction and Transport Hose, highly flexible, permanent antistatic, surface resistance  $< 10^9$  Ohm, microbe-resistant, hardly inflammable acc. to DIN 4102 B1

### Applications

- Highly flexible spiral hose for suction and transport of abrasive solids, liquids and gases, fine-grained particles, e.g. dust and powder
- Suction/extraction of paper and textile fibres
- Protective hose against mechanical wear
- Oil mist extraction/suction
- Hardly inflammable acc. to DIN 4102 B1

### Available in:

DN 25 - DN 500  
Color: transparent  
Stock lengths: see internet  
max. production length: 25 m dep. DN

### Temperature Range

-40 °C to +90 °C  
peaks to +125 °C

## Master-PUR H Trivolution



PU Suction and Transport Hose, flexible, permanent antistatic, surface resistance  $< 10^9$  Ohm, microbe-resistant, hardly inflammable acc. to DIN 4102 B1

### Applications

- Suction/transport of abrasive solids, paper fibres, granules, gases, liquids, rough-grained media with a high flow-rate, e.g. wood shavings
- Standard hose for industrial vacuum cleaners and granule conveyors
- Oil mist extraction/suction
- Hardly inflammable acc. to DIN 4102 B1

### Available in:

DN 13 - DN 500  
Color: transparent  
Stock lengths: see internet  
max. production length: 25 m dep. DN

### Temperature Range

-40 °C to +90 °C  
peaks to +125 °C

## Master-PUR H HT 125



Suction hose & Transport Hose, medium weight, constant temperature resistant up to 125 °C, good flexibility, permanently antistatic

### Applications

- Plant & Mechanical Engineering

### Available in:

DN 25 - DN 200  
Color: transparent  
Stock lengths: see internet  
max. production length: 20 m dep. DN

### Temperature Range

-30 °C to +120 °C  
peaks to +150 °C

## Master-PUR HÜ Trivolution



PU Suction and Transport Hose, flexible, permanent antistatic, surface resistance  $< 10^9$  Ohm, microbe-resistant, hardly inflammable acc. to DIN 4102 B1

### Applications

- Protective hose against mechanical wear
- Transport hose for greater requirements
- Specially designed for use in dry suction vehicles; light, flexible head hose
- Hardly inflammable acc. to DIN 4102 B1

### Available in:

DN 102 - DN 152  
Color: transparent  
Stock lengths: see internet  
max. production length: 25 m dep. DN

### Temperature Range

-40 °C to +90 °C  
peaks to +125 °C

# Abrasion-Proof Suction and Transport Hoses made from PU

## Master-PUR HÜ S Trivolution



PU Suction and Transport Hose, flexible, permanent antistatic, surface resistance <math>< 10^9</math> Ohm, microbe-resistant, hardly inflammable acc. to DIN 4102 B1

### Applications

- Predictive hose against mechanical wear
- Reinforced special hose for use on dry suction vehicles, medium-weight, flexible head hose
- Hardly inflammable acc. to DIN 4102 B1

### Available in:

DN 100 - DN 150  
Color: transparent  
Stock lengths: see internet  
max. production length: 25 m dep. DN

### Temperature Range

-40 °C to +90 °C  
peaks to +125 °C

## Master-PUR HX Trivolution



PU Suction and Transport Hose, abrasion/vacuum-resistant, reinforced, permanent antistatic, <math>< 10^9</math> Ohm, microbe-resistant, hardly inflammable

### Applications

- Suction and transport hose for silo vehicles, loading stations, flat-roof gravelling, extremely abrasive media, problematic transport goods such as sand, gravel, grain, etc.
- Excellent for greater durability and longer maintenance intervals
- Hardly inflammable acc. to DIN 4102 B1

### Available in:

DN 32 - DN 300  
Color: transparent  
Stock lengths: see internet  
max. production length: 20 m dep. DN

### Temperature Range

-40 °C to +90 °C  
peaks to +125 °C

## Master-PUR HX S



PU Suction and Transport Hose, extremely abrasion/vacuum-resistant, smooth inner lining, permanent antistatic, <math>< 10^9</math> Ohm, microbe-resistant

### Applications

- Flat-roof gravelling, roof greening, vacuum/suction vehicles, maintenance of railway tracks, transport of glass wool, stone wool, slag, mill scale and sintered materials
- Suction and transport hose for quarries cement works, shipyards, docks
- Working hose for silo vehicles and cargo depots

### Available in:

DN 51 - DN 152  
Color: transparent  
Stock lengths: see internet  
max. production length: 20 m dep. DN

### Temperature Range

-40 °C to +90 °C  
peaks to +125 °C

## Master-PUR Performance



PU Suction and Transport Hose, extremely abrasion/vacuum-resistant, totally smooth inner lining, permanent antistatic, <math>< 10^9</math> Ohm, microbe-resistant

### Applications

- Transport hose for problematic media, e.g. sand, gravel, grain, granules, as well as for conveyance, handling and loading plants
- Everywhere where easy-to-clean surfaces are required
- Suction and transport hose for extremely abrasive solid, liquid and gaseous media
- Transport hose for glass works, steelworks, quarries, shipyards, docks, flat-roof gravelling, etc.

### Available in:

DN 38 - DN 202  
Color: transparent  
Stock lengths: see internet  
max. production length: 10 m dep. DN

### Temperature Range

-40 °C to +90 °C  
peaks to +125 °C

## Cargoflex



PU Suction and Transport Hose, extremely abrasion/vacuum-resistant, flexible

### Applications

- Suction/transport of highly abrasive goods, e.g. stone wool, gravel, stone, slag, mill scale, cement, glass splinters, sintered materials, materials from shipyards and docks.
- For highest standards of abrasion resistance and durability
- Suction and transport hose for the most extreme fields of application

### Available in:

DN 100 - DN 254  
Color: transparent  
Stock lengths: see internet  
max. production length: 20 m dep. DN

### Temperature Range

-40 °C to +90 °C  
peaks to +125 °C

# Abrasion-Proof Suction and Transport Hoses made from PU

## Master-PUR Inline



PU Suction and Transport Hose, extremely abrasion/vacuum-resistant, totally smooth inner lining, antistatic, <math>10^9</math> Ohm, microbe-resistant

### Applications

- Special hose for transport of extremely abrasive media
- Transport hose for problematic media, e.g. sand, gravel, grain, granules
- Everywhere where easy-to-clean surfaces are required
- Transport hose for glassworks, mineral processing plants, steelworks, quarries, shipyards, docks, cement works, flat roof gravelling, etc.
- Other conveyer and loading plants

### Available in:

DN 38 - DN 250  
Color: transparent  
Stock lengths: see internet  
max. production length: 10 m dep. DN

### Temperature Range

-40 °C to +90 °C  
peaks to +125 °C

## Polderflex PUR



PU Suction and Transport Hose, extremely abrasion/vacuum-resistant, smooth inside and outside

### Applications

- For the most extreme fields of application
- Transport of gravel, stones, for conveyer facilities
- Suction/extraction of glass splinters, glass wool, stone wool, slag, mill scale, sintered material
- Maintenance of railway tracks
- Quarries, cement-works, shipyards, docks, work hose for silo vehicles and loading stations

### Available in:

DN 32 - DN 150  
Color: transparent  
Stock lengths: see internet  
max. production length: 20 m dep. DN

### Temperature Range

-40 °C to +90 °C  
peaks to +125 °C

## Master-PUR Flat Food A



Spiral free PU transport hose, lightweight, permanent antistatic, very good flexibility, food safe EU10/2011 and FDA

### Applications

- use as compensator
- spiral-free conveying hose for abrasive solids
- solids
- solids transport at screening machines
- discharge hose at loading stations
- food industry
- pharmaceutical industry
- chemistry

### Available in:

DN 70 - DN 305  
Color: transparent  
Stock lengths: see internet  
max. production length: 5 m dep. DN

### Temperature Range

-40 °C to +90 °C  
peaks to +125 °C

## Master-PUR STEP



PU Film Hose, crush-resistant, highly flexible, hardly inflammable acc. to DIN 4102 B1

### Applications

- Suction & transport hose for abrasive solids, liquids and gases
- Ideal for floor-level areas where conventional hoses are subjected to rough conditions and can be permanently deformed
- Wood processing
- Protective Hose

### Available in:

DN 50 - DN 160  
Color: hose wall transparent with blue spirital  
Stock lengths: see internet  
max. production length: 25 m dep. DN

### Temperature Range

-40 °C to +90 °C  
peaks to +125 °C

## Miniflex PU



PU Protection and Suction Hose with plastic-coated wire helix, microbe-resistant, highly flexible

### Applications

- Protective hose against mechanical wear
- Cable protection hose
- Protective and suction hose for solids, liquids and gases
- Suction hose for fine-grained particles, e.g. dust, powders, fibres
- Ventilation (gauge pressure and low pressure range)
- Suction hose for handheld machines

### Available in:

DN 7 - DN 51  
Color: blue, RAL5015  
Stock lengths: see internet  
max. production length: 50 m dep. DN

### Temperature Range

-40 °C to +90 °C  
peaks to +125 °C

# Abrasion-Proof Suction and Transport Hoses made from PU

## Master-PUR M Trainflex®



PU suction hose/transport hose, medium weight, good flexibility, flame retardant according to DIN EN 45545-2

### Applications

- For abrasive solids, gaseous and liquid media
- Tested for rail vehicles according to DIN 5510 and DIN EN 45545-2, train, railway, tramway, boat, ship, yacht: ventilation, heating, roof drainage, brake sand conveyance, sanitary installation
- Granulate transport hose

### Available in:

DN 20 - DN 140  
Color: black  
Stock lengths: see internet  
max. production length: 25 m dep. DN

### Temperature Range

-40 °C to +90 °C  
peaks to +125 °C

## Master-PUR H Trainflex®



PU suction hose/transport hose, medium weight, good flexibility, flame retardant according to DIN EN 45545-2

### Applications

- For abrasive solids, as well as gaseous and liquid media and liquid media
- Tested for rail vehicles according to DIN 5510 and DIN EN 45545-2, train, railway, tramway, boat, ship, yacht: ventilation, heating, roof drainage, brake sand conveyance, sanitary installation
- Granulate transport hose

### Available in:

DN 20 - DN 140  
Color: black  
Stock lengths: see internet  
max. production length: 25 m dep. DN

### Temperature Range

-40 °C to +90 °C  
peaks to +125 °C

# 2



Suction & Transport Hoses  
made from PVC & EVA

Suction and transport hoses made from PVC offer good chemical resistance. Hoses made from EVA are very lightweight, robust and crush-resistant

## Master-PVC LF



PVC Film Hose,  
light duty,  
highly flexible

### Applications

- Transport of fine-grained particles, such as dust and powder
- Protective hose
- Liquid/fluid drainage
- Suction and transport hose for solid, liquid and gaseous media
- Ventilation and air-conditioning systems
- Dust removal
- Apparatus construction
- Spinning fibre extraction

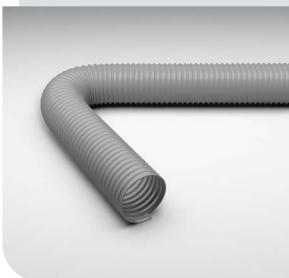
### Available in:

DN 20 - DN 400  
Color: grey  
Stock lengths: see internet  
max. production length:  
25 m dep. DN

### Temperature Range

-20 °C to +70 °C  
peaks to +80 °C

## Master PVC L



PVC Suction and  
Transport Hose,  
light duty,  
highly flexible

### Applications

- Transport of fine-grained particles, such as dust and powder
- Protective hose
- Liquid/fluid drainage
- Suction and transport hose for solid, liquid and gaseous media
- Ventilation and air-conditioning systems

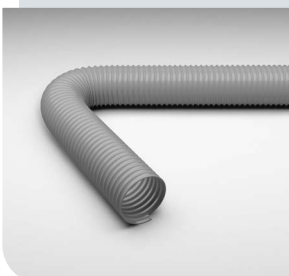
### Available in:

DN 38 - DN 500  
Color: grey  
Stock lengths: see internet  
max. production length:  
25 m dep. DN

### Temperature Range

-20 °C to +70 °C  
peaks to +80 °C

## Master-PVC HF



PVC Film Hose,  
medium duty,  
flexible

### Applications

- Transport of fine-grained particles, such as dust and powder
- Protective hose
- Liquid/fluid drainage
- Suction and transport hose for solid, liquid and gaseous media
- Ventilation and air-conditioning systems
- Dust removal
- Apparatus construction
- Spinning fibre extraction

### Available in:

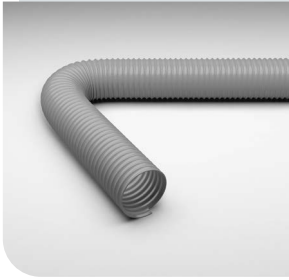
DN 20 - DN 500  
Color: grey  
Stock lengths: see internet  
max. production length:  
25 m dep. DN

### Temperature Range

-20 °C to +70 °C  
peaks to +80 °C

# Suction & Transport Hoses made from PVC & EVA

## Master-PVC H



PVC Suction and Transport Hose, medium duty, flexible

### Applications

- Transport of fine-grained particles, such as dust and powder
- Protective hose
- Liquid/fluid drainage
- Suction and transport hose for solid, liquid and gaseous media
- Ventilation and air-conditioning systems

### Available on request in:

DN 32 - DN 500  
Color: grey  
Stock lengths: see internet  
max. production length: 25 m dep. DN

### Temperature Range

-20 °C to +70 °C  
peaks to +80 °C

## Master-PVC Flex



PVC Suction and Transport Hose, light duty, highly flexible, reinforced

### Applications

- Transport of fine-grained particles, such as dust and powder
- Protective hose
- Liquid/fluid drainage
- Suction and transport hose for solid, liquid and gaseous media
- Ventilation and air-conditioning systems, boat and caravan manufacturing, machine manufacturing, construction drying, textile industry, vacuum cleaners, welding fume extraction

### Available in:

DN 25 - DN 102  
Color: black  
Stock lengths: see internet  
max. production length: 15 m dep. DN

### Temperature Range

0 °C to +70 °C  
peaks to +85 °C

## Master-VAC



PE-EVA Suction and Transport Hose, light duty, crush-resistant

**TOP TIP:**  
Also available as  
electroconductive  
EL version

### Applications

- Transport of fine-grained particles, such as dust and powder
- Protective hose
- Ventilation, swimming pool cleaning, chemicals industry
- Conveyance and suction of solid, liquid and gaseous media
- Dust removal units
- Lightweight industrial vacuum cleaners
- Handheld machines

### Available in:

DN 28 - DN 50  
Color: black  
Stock lengths: see internet  
max. production length: 30 m dep. DN

### Temperature Range

-40 °C to +60 °C  
peaks to +70 °C

## Polderflex-PVC



PVC Suction and Transport Hose, pressure/vacuum-proof, cadmium-free, flexible

### Applications

- Suction and transport hose for abrasive solids, liquids and gases
- Sewer cleaning
- Vacuum pumps
- Agriculture
- Construction industry
- Groundwater offtake

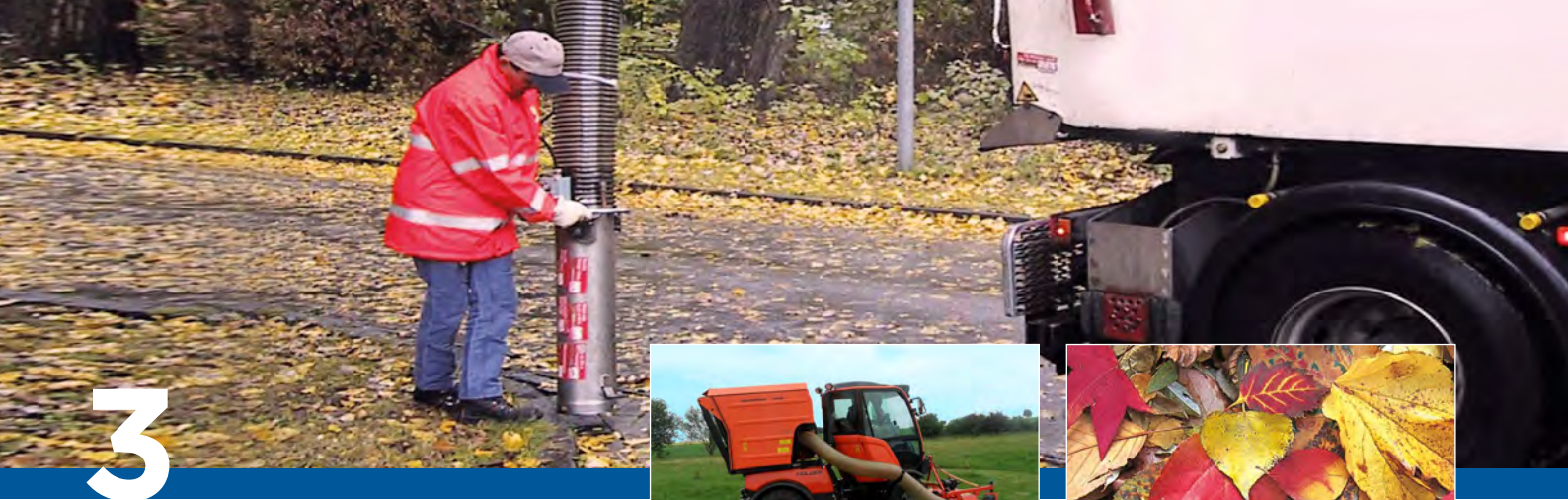
### Available in:

DN 12 - DN 152  
Color: transparent  
Stock lengths: see internet  
max. production length: 50 m dep. DN

### Temperature Range

-20 °C to +70 °C  
peaks to +80 °C

# 3



## Microbe & Hydrolysis Resistant Hoses

# Extremely flexible hoses made from Polyester and Polyether-Polyurethane for a wide range of applications

### Master-PUR L Trivolution



PU Suction and Transport Hose, very lightweight, permanent antistatic, surface resistance < 10<sup>9</sup> Ohm, microbe-resistant, hardly inflammable

#### Applications

- Highly flexible spiral hose for suction and transport of abrasive solids, liquids and gases, fine-grained particles, e.g. dust and powder
- Suction/extraction of paper and textile fibres
- Protective hose against mechanical wear
- Oil mist extraction/suction
- Hardly inflammable acc. to DIN 4102 B1

#### Available in:

DN 25 - DN 500  
Color: transparent  
Stock lengths: see internet  
max. production length: 25 m dep. DN

#### Temperature Range

-40 °C to +90 °C  
peaks to +125 °C

### Master-PUR STEP MHR



PU Film Hose, crush-resistant, microbe and hydrolysis resistant, extremely flexible

#### Applications

- Suction & transport hose for abrasive solids, for which microbe and hydrolysis resistance is required
- Light suction hose for municipal vehicles
- Leaf vacuums/blowers
- Lawnmowers

#### Available in:

DN 80 - DN 200  
Color: Hose wall transparent with black spiral  
Stock lengths: see internet  
max. production length: 25 m dep. DN

#### Temperature Range

-40 °C to +90 °C  
peaks to +125 °C

### Master-PUR L MHR



PU Suction and Transport Hose, lightweight, microbe and hydrolysis-resistant

#### Applications

- Suction/extraction of paper and textile fibres
- Suction & transport hose for abrasive solids, for which microbe and hydrolysis resistance is required
- Transport of fine-grained particles, such as dust and powder
- Protective hose against mechanical wear
- Oil mist extraction/suction

#### Available on request in:

DN 25 - DN 500  
Color: transparent  
Stock lengths: see internet  
max. production length: 25 m dep. DN

#### Temperature Range

-40 °C to +90 °C  
peaks to +125 °C

# Microbe & Hydrolysis Resistant Hoses

## Master-PUR H MHR



PU Suction and Transport Hose medium duty, flexible, microbe and hydrolysis resistant

### Applications

- Standard hose for industrial vacuum cleaners
- Granulate transport hose
- Transport of chips/shavings
- Suction and transport of paper fibres
- Oil mist extraction/suction
- Suction & transport hose for abrasive solids, for which microbe and hydrolysis resistance is required

### Available on request in:

DN 16 - DN 500  
Color: transparent  
Stock lengths: see internet  
max. production length: 25 m dep. DN

### Temperature Range

-40 °C to +90 °C  
peaks to +125 °C

## Master-PUR H Streetmaster Pro



PU Sweepers Suction Hose, medium weight, good flexibility, highly abrasion, vacuum, microbe and hydrolysis resistant, with external folding

### Applications

- Disposal and cleaning technology
- Suction hose on large and small sweepers machines
- Suction and transport hose for abrasive causing
- Solids with a microbial resistance and optimized flow values are required

### Available on request in:

DN 140 - DN 254  
Color: transparent, partial colouring  
Stock lengths: see internet  
max. production length: 20 m dep. DN

### Temperature Range

-40 °C to +90 °C  
peaks to +125 °C

## Streetmaster GKS



PU Suction Hose for large street-cleaner vehicles, highly abrasion, vacuum and microbe-resistant

### Applications

- Municipal and waste disposal vehicles
- Suction dredger hose
- Suction hose for larger sweepers
- Suction & transport hose for abrasive solids, which require microbe resistance

### Available in:

DN 225, 250, 280  
Color: black  
Stock lengths: see internet  
max. production length: 20 m dep. DN

### Temperature Range

-40 °C to +90 °C  
peaks to +125 °C

## Streetmaster KKS



PU Suction Hose for smaller street-cleaner vehicles, highly abrasion, vacuum and microbe-resistant

### Applications

- Municipal and waste disposal vehicles
- Suction dredger hose
- Suction hose for smaller sweepers
- Suction and transport hose for abrasive solids, which require microbe resistance

### Available in:

DN 200  
Color: black oder transparent  
Stock lengths: see internet  
max. production length: 20 m dep. DN

### Temperature Range

-40 °C to +90 °C  
peaks to +125 °C

## Streetmaster GLG



PU hose for larger leaf and grass suction devices, microbe-resistant

### Applications

- Transport hose for abrasive solids, which require microbe resistance
- Slope cutters
- Leaf vacuums/blowers

### Available in:

DN 400  
Color: black  
Stock lengths: see internet  
max. production length: 20 m dep. DN

### Temperature Range

-40 °C to +90 °C  
peaks to +125 °C

# 4



## Food & Pharmaceutical Hoses

Smooth hoses made from Polyether-Polyurethane, certified to EU directives and FDA approved for almost any application in the Food & Pharmaceutical industries

### Master-PUR LF Food A



PU Suction and Transport Hose, super lightweight, extremely flexible, Food-grade quality (FDA/ EU 10/2011), permanent antistatic, surface resistance <math>< 10^9 \text{ Ohm}</math>

#### Applications

- Suction and transport hose for the
  - Food industry
  - Pharmaceuticals industry
  - Chemicals industry

#### Available in:

DN 40 - DN 400  
Color: transparent  
Stock lengths: see internet  
max. production length: 25 m dep. DN

#### Temperature Range

-40 °C to +90 °C  
peaks to +125 °C

### Master-PUR L Food



PU Suction and Transport Hose, lightweight, highly flexible, Food-grade quality (FDA/ EU 10/2011)

#### Applications

- Certified suction and transport hose for solids and liquids in the
  - Food industry
  - Pharmaceuticals industry
  - Chemicals industry

#### Available in:

DN 32 - DN 203  
Color: transparent  
Stock lengths: see internet  
max. production length: 25 m dep. DN

#### Temperature Range

-40 °C to +90 °C  
peaks to +125 °C

### Master-PUR L Food A



PU Suction and Transport Hose, lightweight, highly flexible, food-grade quality acc. to EU 10/2011 and FDA, permanent antistatic, surface resistance <math>< 10^9 \text{ Ohm}</math>

#### Applications

- Certified suction and transport hose for solids and liquids in the
  - Food industry
  - Pharmaceuticals industry
  - Chemicals industry

#### Available in:

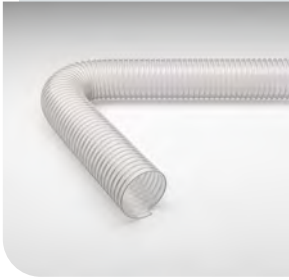
DN 32 - DN 203  
Color: transparent  
Stock lengths: see internet  
max. production length: 25 m dep. DN

#### Temperature Range

-40 °C to +90 °C  
peaks to +125 °C

# Food & Pharmaceutical Hoses

## Master-PUR H Food



PU Suction and Transport Hose, medium duty, very flexible, Food-grade quality (FDA/ EU 10/2011)

### Applications

- Certified suction and transport hose for solids and liquids in the
  - Food industry
  - Pharmaceuticals industry
  - Chemicals industry

### Available in:

DN 20 - DN 203  
Color: transparent  
Stock lengths: see internet  
max. production length: 25 m dep. DN

### Temperature Range

-40 °C to +90 °C  
peaks to +125 °C

## Master-PUR H Food A



PU Suction and Transport Hose, medium duty, very flexible, Food-grade quality (FDA/ EU 10/2011), permanent antistatic, surface resistance <math>< 10^9</math> Ohm

### Applications

- Certified suction and transport hose for solids and liquids in the
  - Food industry
  - Pharmaceuticals industry
  - Chemicals industry

### Available in:

DN 20 - DN 203  
Color: transparent  
Stock lengths: see internet  
max. production length: 25 m dep. DN

### Temperature Range

-40 °C to +90 °C  
peaks to +125 °C

## Master-PUR HX Food



PU Suction and Transport Hose, heavy duty, flexible, Food-grade quality (FDA/ EU 10/2011)

### Applications

- Certified suction and transport hose for solids and liquids in the
  - Food industry
  - Pharmaceuticals industry
  - Chemicals industry

### Available in:

DN 32 - DN 152  
Color: transparent  
Stock lengths: see internet  
max. production length: 20 m dep. DN

### Temperature Range

-40 °C to +90 °C  
peaks to +125 °C

## Master-PUR HX Food A



PU Suction and Transport Hose, heavy duty, flexible, Food-grade quality (FDA/ EU 10/2011), permanent antistatic, surface resistance <math>< 10^9</math> Ohm

### Applications

- Certified suction and transport hose for solids and liquids in the
  - Food industry
  - Pharmaceuticals industry
  - Chemicals industry

### Available in:

DN 50 - DN 152  
Color: transparent  
Stock lengths: see internet  
max. production length: 20 m dep. DN

### Temperature Range

-40 °C to +90 °C  
peaks to +125 °C

## Polderflex PUR Food A



PU Suction and Transport Hose, extremely pressure/ vacuum-proof, smooth inner and outer linings, permanent antistatic, surface resistance <math>< 10^9</math> Ohm, Food-grade quality (FDA/ EU 10/2011)

### Applications

- Certified suction and transport hose for solids and liquids in the
  - Food industry
  - Pharmaceuticals industry
  - Chemicals industry

### Available in:

DN 32 - DN 152  
Color: transparent  
Stock lengths: see internet  
max. production length: 20 m dep. DN

### Temperature Range

-40 °C to +90 °C  
peaks to +125 °C

## Master-PUR Flat Food A



Spiral free PU transport hose, lightweight, permanent antistatic, very good flexibility, food safe EU10/2011 and FDA

### Applications

- use as compensator
- spiral-free conveying hose for abrasive solids
- solids
- solids transport at screening machines
- discharge hose at loading stations
- food industry
- pharmaceutical industry
- chemistry

### Available in:

DN 70 - DN 305  
Color: transparent  
Stock lengths: see internet  
max. production length: 5 m dep. DN

### Temperature Range

-40 °C to +90 °C  
peaks to +125 °C

## Master-SIL SD Food



Silicone Pressure Hose, Food-grade quality (FDA)

### Applications

- When using the corresponding connectors, the hose can remain in the pipeline for cleaning purposes
- Suction and transport hose for powder and liquid media in the food industry
- Machine development for cosmetic products
- Pharmaceuticals industry
- Chemicals industry

### Available in:

DN 10 - DN 102  
Color: transparent  
Stock lengths: see internet  
max. production length: 20 m dep. DN

### Temperature Range

-60 °C to +200 °C

## Master H2O



TPE foil hose for applications with cold and warm drinking water

### Applications

- drinking water applications

### Available in:

DN 40 - DN 70  
Color: transparent  
Stock lengths: see internet  
max. production length: 25 m

### Temperature Range

-40 °C to +90 °C  
peaks to +125 °C

## Master-PUR H FishTec



PU suction hose / transport hose, medium weight, good flexibility, microbe resistant and hydrolysis resistant, certified according to NS 9416:2013

### Applications

- Fish Industry
- Municipal technology
- Sweeping vehicles, sweeping machines
- Vacuum technology
- Industrial cleaning
- Cleaning apparatus and cleaning apparatus

### Available in:

DN 140 - DN 508  
Color: transparent  
Stock lengths: see internet  
max. production length: 25 m

### Temperature Range

-40 °C to +90 °C  
peaks to +125 °C

# 5



Permanent antistatic and electroconductive Hoses

## For preventing danger of ignition through electrostatic charges

### Master-PUR L Trivolution®



PU Suction and Transport Hose, highly flexible, antistatic, surface resistance  $< 10^9$  Ohm, microbe-resistant, hardly inflammable

#### Applications

- Highly flexible spiral hose for suction and transport of abrasive solids, liquids and gases, fine-grained particles, e.g. dust and powder
- Suction/extraction of paper and textile fibres
- Protective hose against mechanical wear
- Oil mist extraction/suction
- Hardly inflammable acc. to DIN 4102 B1

#### Available in:

DN 25 - DN 500  
Color: transparent  
Stock lengths: see internet  
max. production length: 25 m dep. DN

#### Temperature Range

-40 °C to +90 °C  
peaks to +125°C

### Master-PUR L EL



PU Suction and Transport Hose, light duty, highly flexible, electroconductive, surface resistance  $< 10^3$  Ohm

#### Applications

- Transport of fine-grained particles, such as dust and powder
- Suction/extraction of paper and textile fibres
- Suction & transport hose for abrasive solids, liquids and gases
- Oil mist extraction/suction
- Protective hose against mechanical wear
- Danger zones, which require electrically conductive hoses

#### Available in:

DN 25 - DN 500  
Color: black  
Stock lengths: see internet  
max. production length: 25 m dep. DN

#### Temperature Range

-40 °C to +90 °C  
peaks to +125°C

### Master-PUR H Trivolution®



PU Suction and Transport Hose, flexible, permanent antistatic, surface resistance  $< 10^9$  Ohm, microbe-resistant, hardly inflammable

#### Applications

- Suction/transport of abrasive solids, paper fibres, granules, gases, liquids, rough-grained media with a high flow-rate, e.g. wood shavings
- Standard hose for industrial vacuum cleaners and granule conveyors
- Oil mist extraction/suction
- Hardly inflammable acc. to DIN 4102 B1

#### Available in:

DN 13 - DN 500  
Color: transparent  
Stock lengths: see internet  
max. production length: 25 m dep. DN

#### Temperature Range

-40 °C to +90 °C  
peaks to +125 °C

# Permanent antistatic and electroconductive Hoses

## Master-PUR H EL



PU Suction and Transport Hose, medium duty, very flexible, electroconductive, surface resistance  $< 10^3$  Ohm

### Applications

- Transport of fine-grained particles, such as dust and powder
- Protective hose against mechanical wear
- Suction of coarse-grained media with high flow rate
- Oil mist extraction/suction
- Danger zones, which require electrically conductive hoses

### Available in:

DN 25 - DN 500  
Color: black  
Stock lengths: see internet  
max. production length: 25 m dep. DN

### Temperature Range

-40 °C to +90 °C  
peaks to +125 °C

## Master-PUR HX Trivolution®



PU Suction and Transport Hose, abrasion/vacuum-resistant, reinforced, permanent antistatic,  $< 10^9$  Ohm, microbe-resistant, hardly inflammable

### Applications

- Suction and transport hose for silo vehicles, loading stations, flat-roof gravelling, extremely abrasive media, problematic transport goods such as sand, gravel, grain, etc.
- Excellent for greater durability and longer maintenance intervals
- Hardly inflammable acc. to DIN 4102 B1

### Available in:

DN 32 - DN 300  
Color: transparent  
Stock lengths: see internet  
max. production length: 20 m dep. DN

### Temperature Range

-40 °C to +90 °C  
peaks to +125 °C

## Master-PUR HX EL



PU Suction and Transport Hose, flexible, highly abrasion/vacuum-proof, electroconductive, surface resistance  $< 10^3$  Ohm

### Applications

- Danger zones, which require electrically conductive hoses
- Suction of coarse-grained media with high flow rate
- Protective hose against mechanical wear
- Suction & transport hose for abrasive solids, liquids and gases

### Available in:

DN 32 - DN 300  
Color: black  
Stock lengths: see internet  
max. production length: 20 m dep. DN

### Temperature Range

-40 °C to +90 °C  
peaks to +125 °C

## Master-PUR Performance®



PU Suction and Transport Hose, extremely abrasion/vacuum-resistant, totally smooth inner lining, permanent antistatic,  $< 10^9$  Ohm, microbe-resistant

### Applications

- Transport hose for problematic media, e.g. sand, gravel, grain, granules, as well as for conveyance, handling and loading plants
- Everywhere where easy-to-clean surfaces are required
- Suction and transport hose for extremely abrasive solid, liquid and gaseous media
- Transports hose for glass works, steelworks, quarries, shipyards, docks, flat-roof gravelling, etc.

### Available in:

DN 38 - DN 202  
Color: transparent  
Stock lengths: see internet  
max. production length: 10 m dep. DN

### Temperature Range

-40 °C to +90 °C  
peaks to +125 °C

## Master-PE LF EL



PE Film Hose, super lightweight, highly flexible, electroconductive, surface resistance  $\leq 10^4$  Ohm

### Applications

- Suction/extraction of chemical fumes and gases in ventilation and air conditioning

### Available in:

DN 40 - DN 600  
Color: black  
Stock lengths: see internet  
max. production length: 25 m dep. DN

### Temperature Range

-40 °C to +60 °C  
peaks to +80 °C

# Permanent antistatic and electroconductive Hose

## Master-PE L EL



PE Suction and Transport Hose, lightweight, highly flexible, electroconductive, surface resistance  $\leq 10^4$  Ohm

### Applications

- Suction & transport hose for aggressive gases and liquids
- Transport of fine-grained particles, such as dust and powder
- Oil mist extraction/suction
- Danger zones, which require electrically conductive hoses

### Available in:

DN 25 - DN 300  
Color: black  
Stock lengths: see internet  
max. production length: 25 m dep. DN

### Temperature Range

-35 °C to +80 °C  
peaks to +120 °C

## Master-Clip VINYL EL



Suction and Blower Hose made from PVC-coated polyester fabric, antistatic, surface resistance  $< 10^6$  Ohm

### Applications

- Danger zones, which requires electro-conductivity acc. to TRBS
- Suction and conveyance of aggressive media, explosive gases and fumes
- Air supply & extraction in explosion-protected areas
- For greater mechanical demands
- Low pressure range
- Extractor units

### Available in:

DN 50 - DN 900  
Color: black  
Stock lengths: see internet  
max. production length: 25 m dep. DN

### Temperature Range

-20 °C to +70 °C  
peaks to +80 °C

## Master-Clip VITON® EL



Suction and Blower hose made from VITON®-coated Polyester fabric, for corrosive media up to +210 °C, electroconductive, surface resistance  $\leq 10^4$  Ohm

### Applications

- Danger zones, which requires electro-conductivity acc. to TRBS
- Paint mist extraction
- Suction/extraction of aggressive media in medium Temperature Range
- Low pressure range
- Chemicals industry

### Available in:

DN 38 - DN 900  
Color: black  
Stock lengths: see internet  
max. production length: 25 m dep. DN

### Temperature Range

-25 °C to +210 °C  
peaks to +240 °C

## Master-Clip PTFE EL



Suction and Blower Hose for corrosive media up to +280 °C, electroconductive, surface resistance  $< 10^6$  Ohm

### Applications

- Danger zones, which requires electro-conductivity acc. to TRBS
- Suction and conveyance of aggressive media, explosive gases and fumes
- Paint mist extraction
- Paint, wood and paper industry
- Solvent extraction
- Pharmaceuticals industry
- Low pressure range
- Chemicals industry

### Available in:

DN 55 - DN 900  
Color: black  
Stock lengths: see internet  
max. production length: 10 m dep. DN

### Temperature Range

-150 °C to +280 °C  
peaks to +300 °C

## Master-Clip PTFE H EL



Suction and Blower Hose for corrosive media up to +175 °C, electroconductive, surface resistance  $< 10^6$  Ohm

### Applications

- Danger zones, which requires electro-conductivity acc. to TRBS
- Suction and conveyance of aggressive media, explosive gases and fumes
- Paint mist extraction
- Paint, wood and paper industry
- Solvent extraction
- Pharmaceuticals industry
- Low pressure range
- Chemicals industry

### Available in:

DN 38 - DN 900  
Color: black  
Stock lengths: see internet  
max. production length: 25 m dep. DN

### Temperature Range

-40 °C to +175 °C  
peaks to +190 °C

# Permanent antistatic and electroconductive Hoses

## Master-Clip PTFE S EL



Suction and Blower Hose for corrosive media up to +250 °C, electroconductive, surface resistance <math>< 10^6 \text{ Ohm}</math>

### Applications

- Danger zones, which requires electro-conductivity acc. to TRBS
- Suction and conveyance of aggressive media, explosive gases and fumes
- Paint mist extraction
- Paint, wood and paper industry
- Solvent extraction
- Phamaceuticals industry
- Low pressure range
- Chemicals industry

### Available in:

DN 50 - DN 900  
Color: black  
Stock lengths: see internet  
max. production length: 10 m dep. DN

### Temperature Range

-70 °C to +250 °C  
peaks to +270 °C

## Master-VAC EL



PE-EVA Suction and Transport Hose, lightweight, crush-resistant, electroconductive, surface resistance <math>< 10^6 \text{ Ohm}</math>

### Applications

- Suction hose for fine-grained particles, e.g. dust, powders, fibres
- Protective hose
- Swimming pool cleaning
- Chemicals industry, ventilation
- Conveyance and suction of solid, liquid and gaseous media
- Dust removal units
- Household and industrial vacuum cleaners
- Handheld machines

### Available in:

DN 25 - DN 50  
Color: black  
Stock lengths: see internet  
max. production length: 20 m dep. DN

### Temperature Range

-40 °C to +60 °C  
peaks to +70 °C

# 6



## Air-Conditioning, Ventilation & Welding Fumes Hoses

### Air Supply and Ventilation in Air-Conditioning Technology and Extractor Units

#### Master-Clip VINYL



Suction and Blower Hose made from PVC foil/film

#### Applications

- Air-conditioning and ventilation systems
- Air supply and extraction
- Low pressure range
- Extractor units

#### Available in:

DN 40 - DN 900  
Color: grey  
Stock lengths: see internet  
max. production length: 25 m dep. DN

#### Temperature Range

-20 °C to +70 °C  
peaks to +80 °C

#### Master-Clip VINYL B



Suction and Blower Hose made from PVC-coated Polyester fabric, hardly inflammable

#### Applications

- Air-conditioning and ventilation systems
- Air supply and extraction
- Tent ventilation
- Solder fume extraction
- Low pressure range
- Extractor units

#### Available in:

DN 40 - DN 900  
Color: grey  
Stock lengths: see internet  
max. production length: 25 m dep. DN

#### Temperature Range

-20 °C to +70 °C  
peaks to +80 °C

#### Master-Clip PE



Suction and Blower Hose made from PE-coated PE fabric, environmentally friendly

#### Applications

- Air-conditioning and ventilation systems
- Air supply and extraction
- Vacuum devices for asbestos removal
- Low pressure range
- Extractor units

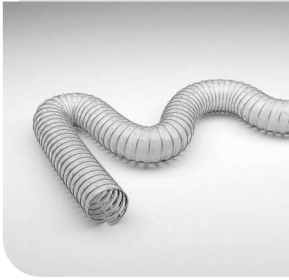
#### Available in:

DN 40 - DN 900  
Color: white  
Stock lengths: see internet  
max. production length: 25 m dep. DN

#### Temperature Range

-40 °C to +85 °C  
peaks to +95 °C

## Master-Clip PUR



Suction and Blower  
Hose made from  
PU film/foil, extremely  
abrasion-proof

### Applications

- Suction/extraction of abrasive solids
- Air-conditioning and ventilation systems
- Low pressure range

### Available in:

DN 40 - DN 900  
Color: transparent  
Stock lengths: see internet  
max. production length:  
15 m dep. DN

### Temperature Range

-40 °C to +90 °C  
peaks to +125 °C

## Master-Clip PUR S



Suction and Blower  
Hose made from  
PU film/foil, extremely  
abrasion-proof,  
double-layered

### Applications

- Suction/extraction of abrasive solids
- Filling plants
- Low pressure range

### Available in:

DN 50 - DN 900  
Color: transparent  
Stock lengths: see internet  
max. production length:  
15 m dep. DN

### Temperature Range

-40 °C to +90 °C  
peaks to +125 °C

## Master-Clip SPARK



Special hose for welding  
fumes extraction, made  
from PVC-coated glass  
fabric

### Applications

- Welding fume extraction
- For greater safety requirements
- Air-conditioning and ventilation systems
- Air supply and extraction
- Tent heating
- Solder fume extraction
- Low pressure range
- Extractor units

### Available in:

DN 40 - DN 900  
Color: dark grey  
Stock lengths: see internet  
max. production length:  
15 m dep. DN

### Temperature Range

-20 °C to +90 °C  
peaks to +110 °C

## Master-Clip SPARK XL



Special hose for  
welding fume extraction  
with increased risk of  
flying sparks

### Applications

- For greater safety requirements
- Grinding dust extraction with high degree of flying sparks
- Welding fume extraction with greater degree of flying sparks
- Suction/extraction of hot and abrasive sanding dust

### Available in:

DN 50 - DN 900  
Color: black  
Stock lengths: see internet  
max. production length:  
15 m dep. DN

### Temperature Range

-40 °C to +200 °C  
peaks to +280 °C

## Master-VENT 2



Suction and Blower  
Hose made from  
co-polymer coated  
Polyester fabric

### Applications

- Steam extraction
- Air-conditioning and ventilation systems
- Extractor units, which require normal inflammable hoses
- Extractor fans and extractors

### Available in:

DN 51 - DN 610  
Color: grey  
Stock lengths: see internet  
max. production length:  
10 m dep. DN

### Temperature Range

-30 °C to +140 °C

# 7



## Exhaust Gas Hoses

# Hoses for suction/extraction of exhaust fumes from combustion engines at temperatures up to +1100 °C

### Carflex Super



Exhaust hose for exhaust fumes/gases up to +200 °C, super lightweight, crush-resistant

#### Applications

- Suction/extraction of engine exhaust fumes up to max. +200 °C
- Permanently rollover-proof exhaust hose
- Medium wear during extraction of petrol and diesel engine exhaust fumes
- All conventional exhaust systems, such as:
  - Exhaust Hose Reel
  - Suction Rail System
  - Upper/Lower Floor Systems
  - Stationary Systems

#### Available in:

DN 25 - DN 200  
Color: black  
Stock lengths: see internet  
max. production length: 25 m dep. DN

#### Temperature Range

Exhaust gas temperatures to +200 °C with proper use of exhaust gas funnels and sufficient fresh air supply (approx. 50 %)

### Carflex 200



Exhaust gas hose for exhaust fumes/gases up to +200 °C

#### Applications

- Suction/extraction of engine exhaust fumes up to max. +200 °C
- All conventional exhaust systems, such as:
  - Exhaust Hose Reel
  - Suction Rail System
  - Upper/Lower Floor Systems
  - Stationary Systems
- Light to medium wear during extraction of petrol and diesel engine exhaust fumes

#### Available in:

DN 63 - DN 200  
Wall black, Profil blue  
Stock lengths: see internet  
max. production length: 25 m dep. DN

#### Temperature Range

Exhaust gas temperatures to +200 °C with proper use of exhaust gas funnels and sufficient fresh air supply (approx. 50 %)

### Carflex 300



Exhaust gas hose for exhaust fumes/gases up to +300 °C

#### Applications

- All conventional exhaust systems, such as:
  - Exhaust Hose Reel
  - Suction Rail System
  - Upper/Lower Floor Systems
  - Stationary Systems
- Medium to high wear during extraction of petrol and diesel engine exhaust fumes, esp. heavy-duty and construction vehicles
- Suction/extraction of engine exhaust fumes up to max. +300 °C

#### Available in:

DN 63 - DN 200  
Color: Inside silver-grey, Wall green-grey, Profil red  
Stock lengths: see internet  
max. production length: 25 m dep. DN

#### Temperature Range

Exhaust gas temperatures to +300 °C with proper use of exhaust gas funnels and sufficient fresh air supply (approx. 50 %)

# Exhaust Gas Hoses

## Master-Clip HT 300



Medium and high temperature hose up to +300 °C, silicone-free, highly flexible

- + silicone-free
- + highly flexible
- + super lightweight

### Applications

- Machine manufacturing
- Automotive manufacturing
- Low pressure range
- Extractor units
- Exhaust extraction (engine manufacturing)
- Hot air
- Smoke extractors
- Defence systems
- Aircraft manufacturing

### Available in:

DN 50 - DN 900

Color: grey

Stock lengths: see internet  
max. production length:  
15 m dep. DN

### Temperature Range

-20 °C to +300 °C  
peaks to +350 °C

## Master-Clip CAR



Medium and high temperature hose up to +300 °C

### Applications

- Machine manufacturing
- Automotive manufacturing
- Low pressure range
- Extractor units
- Exhaust extraction (engine manufacturing)
- Hot air
- Smoke extractors
- Defence systems
- Aircraft manufacturing

### Available in:

DN 38 - DN 900

Color: silver-grey/green-grey

Stock lengths: see internet  
max. production length:  
20 m dep. DN

### Temperature Range

-60°C to +300 °C  
peaks to +350 °C

## Master-Clip ISO-CAR



Medium and high temperature hose up to +300 °C, double-layered

### Applications

- Diesel engine test-benches with higher extraction performance
- Machine manufacturing
- Automotive manufacturing
- Low pressure range
- Extractor units
- Hot air
- Smoke extractors
- Defence systems
- Aircraft manufacturing

### Available in:

DN 38 - DN 900

Color: silver-grey/green-grey

Stock lengths: see internet  
max. production length:  
20 m dep. DN

### Temperature Range

-60 °C to +300 °C  
peaks to +350 °C

## Master-Clip HT 450



Exhaust gas hose for exhaust fumes/gases up to +450 °C, double-layered

### Applications

- Diesel engine test-benches with higher extraction performance
- Machine manufacturing
- Automotive manufacturing
- Low pressure range
- Extractor units
- Hot air
- Smoke extractors
- Defence systems
- Aircraft manufacturing

### Available in:

DN 50 - DN 900

Color: silver-grey

Stock lengths: see internet  
max. production length:  
15 m dep. DN

### Temperature Range

-20 °C to +450 °C  
peaks to +500 °C

## Master-Clip HT 650



Exhaust gas hose for exhaust fumes/gases up to +650 °C

### Applications

- Infrared drying units
- Oven manufacturing
- Exhaust gas extraction for high-performance engine test-benches in the Automotive industry
- Automotive and aircraft industry
- Shipbuilding industry
- Heat protection
- Smoke extraction
- Mining and steel industry
- Machine manufacturing

### Available in:

DN 50 - DN 900

Color: silver-grey

Stock lengths: see internet  
max. production length:  
15 m dep. DN

### Temperature Range

-20 °C to +650 °C  
peaks to +750 °C

# Exhaust Gas Hoses

## Master-Clip HT 1100



Exhaust gas hose for exhaust fumes/gases up to +1100 °C

### Applications

- Oven manufacturing and heat protection
- Automotive, aircraft & shipbuilding industries
- Defence systems
- Mining and steel industry
- Exhaust gas extraction for high-performance engine test-benches in the Automotive industry
- Suction of turbojet engine exhaust fumes
- Exhaust gas extraction for larger engines
- Extreme temperature demands
- Suction/extraction during spark formation

### Available in:

DN 75 - DN 900

Color: silver-grey

Stock lengths: see internet  
max. production length:  
15 m dep. DN

### Temperature Range

-20 °C to +1100 °C

# 8



Temperature-Resistant  
Hoses up to +1.100 °C

## Suction and transport hoses for media temperatures up to +1.100 °C

### Master-Clip NEOPREN



Medium and high  
temperature hose  
up to +125 °C

#### Applications

- Air-conditioning and ventilation systems
- Engine manufacturing
- Exhaust gas extraction
- Suction/extraction of aggressive media
- Transport of hot and cold air
- Automotive manufacturing
- Low pressure range Chemicals industry

#### Available in:

DN 38 - DN 900  
Color: black  
Stock lengths: see internet  
max. production length:  
25 m dep. DN

#### Temperature Range

-35 °C to +125 °C  
peaks to +150 °C

### Master-SANTO SL



TPV Suction and  
Transport Hose,  
very lightweight, for  
increased temperatures

#### Applications

- Steam extraction
- Air supply & extraction in engine applications
- Conveyance of hot & cold air in Automotive & machine manufacturing
- Gaseous media

#### Available in:

DN 25 - DN 400  
Color: fabric black,  
spiral helix-grey  
Stock lengths: see internet  
max. production length:  
25 m dep. DN

#### Temperature Range

-40 °C to +130 °C  
peaks to +150 °C

### Master-SANTO L



TPV Suction and  
Transport Hose,  
lightweight, for  
increased temperatures

#### Applications

- Protective hose against mechanical wear
- Steam extraction
- Air supply & extraction in engine applications
- Conveyance of hot and cold air in Automotive and machine manufacturing
- Liquid and gaseous media

#### Available in:

DN 25 - DN 500  
Color: black  
Stock lengths: see internet  
max. production length:  
25 m dep. DN

#### Temperature Range

-40 °C to +130 °C  
peaks to +150 °C

# Temperature-Resistant Hoses up to +1.100 °C

## Master-SANTO H



TPV Suction and Transport Hose, medium duty, for increased temperatures

### Applications

- Protective hose against mechanical wear
- Steam extraction
- Air supply & extraction in engine applications
- Conveyance of hot & cold air in Automotive and machine manufacturing
- Liquid and gaseous media

### Available in:

DN 25 - DN 500  
Color: black  
Stock lengths: see internet  
max. production length: 25 m dep. DN

### Temperature Range

-40 °C to +125 °C  
peaks to +150 °C

## Master-NEO 1



Medium and high temperature hose up to + 135 °C

### Applications

- Chemicals industry
- Hot air hose for granulate dryer
- Machine and engine manufacturing
- Shipbuilding
- Plastic processing industry
- Waste incineration plants
- Conveyance of air & gaseous media with high nominal and ambient temperatures
- Automotive and aircraft manufacturing

### Available in:

DN 13 - DN 305  
Color: black  
Stock lengths: see internet  
max. production length: 4 m dep. DN

### Temperature Range

-35 °C to +135 °C  
kurzzeitig -55 °C to +150 °C

## Master-NEO 2



Medium and high temperature hose up to + 135 °C, double-layered

### Applications

- Chemicals industry
- Conveyance of air & gaseous media with high nominal and ambient temperatures
- Hot air hose for granulate dryer
- Machine and engine manufacturing
- Shipbuilding
- Plastic processing industry
- Waste incineration plants
- Automotive and aircraft manufacturing

### Available in:

DN 13 - DN 305  
Color: black  
Stock lengths: see internet  
max. production length: 4 m dep. DN

### Temperature Range

-35 °C to +135 °C  
kurzzeitig -55 °C to +150 °C

## Master-Clip HYPALON®



Medium and high temperature hose up to +175 °C

### Applications

- Air-conditioning and ventilation systems
- Engine manufacturing
- Exhaust gas extraction
- Suction/extraction of aggressive media
- Transport of hot and cold air
- Granulate drying
- Standard industrial hose
- Automotive manufacturing
- Low pressure range
- Extractor units

### Available in:

DN 38 - DN 900  
Color: black/ green  
Stock lengths: see internet  
max. production length: 25 m dep. DN

### Temperature Range

-40 °C to +175 °C  
peaks to +190 °C

## Master-Clip VITON®



Medium and high temperature hose up to +210 °C

### Applications

- Paint mist extraction
- Suction/extraction of aggressive media in medium Temperature Range
- Low pressure range
- Chemicals industry

### Available in:

DN 38 - DN 900  
Color: red/ black  
Stock lengths: see internet  
max. production length: 25 m dep. DN

### Temperature Range

-25 °C to +210 °C  
peaks to +240 °C

# Temperature-Resistant Hoses up to +1.100 °C

## Master-SIL 1



Medium and high temperature hose up to +250 °C, double-layered

### Applications

- Chemicals industry
- Hot air hose for granulate dryer
- Machine and engine manufacturing
- Shipbuilding
- Plastic processing industry
- Waste incineration plants
- Conveyance of air and gaseous media with high nominal and ambient temperature
- Automotive and aircraft manufacturing

### Available in:

DN 13 - DN 305

Color: red

Stock lengths: see internet  
max. production length:  
4 m dep. DN

### Temperature Range

-70 °C to +250 °C  
peaks -85 °C to +300 °C

## Master-SIL 2



Medium and high temperature hose up to +250 °C, double-layered

### Applications

- - Chemicals industry
- Conveyance of air & gaseous media with high nominal and ambient temperatures
- Hot air hose for granulate dryer
- Machine and engine manufacturing
- Shipbuilding
- Plastic processing industry
- Waste incineration plants
- Automotive and aircraft manufacturing

### Available in:

DN 13 - DN 305

Color: red

Stock lengths: see internet  
max. production length:  
4 m dep. DN

### Temperature Range

-70 °C to +250 °C  
peaks -85 °C to +300 °C

## Master-Clip SILICON



Medium and high temperature hose up to +300 °C

### Applications

- Engine manufacturing
- Hot and cold air conveyance
- Machine manufacturing
- Automotive manufacturing
- Low pressure range
- Extractor units
- Defence systems
- Aircraft manufacturing

### Available in:

DN 40 - DN 900

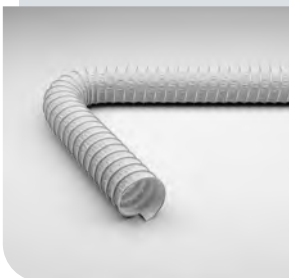
Color: silver-grey

Stock lengths: see internet  
max. production length:  
15 m dep. DN

### Temperature Range

-60 °C to +300 °C  
peaks to +350 °C

## Master-Clip ISO-SILICON



Medium and high temperature hose up to +300 °C, double-layered

### Applications

- Engine manufacturing
- Hot and cold air conveyance
- Extractor units with greater suction performance
- Automotive manufacturing
- Low pressure range
- Defence systems
- Aircraft manufacturing

### Available in:

DN 40 - DN 900

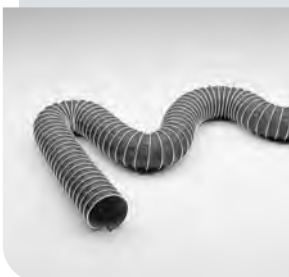
Color: silver-grey

Stock lengths: see internet  
max. production length:  
15 m dep. DN

### Temperature Range

-60 °C to +300 °C  
peaks to +350 °C

## Master-Clip HT 300



Medium and high temperature hose up to +300 °C, silicone-free, highly flexible

+ silicone-free  
+ highly flexible  
+ super lightweight

### Applications

- Machine manufacturing
- Automotive manufacturing
- Low pressure range
- Extractor units
- Exhaust extraction (engine manufacturing)
- Hot air
- Smoke extractors
- Defence systems
- Aircraft manufacturing

### Available in:

DN 50 - DN 900

Color: grey

Stock lengths: see internet  
max. production length:  
15 m dep. DN

### Temperature Range

-20 °C to +300 °C  
peaks to +350 °C

# Temperature-Resistant Hoses up to +1.100 °C

## Master-Clip CAR



Medium and high temperature hose up to +300 °C

### Applications

- Machine manufacturing
- Automotive manufacturing
- Low pressure range
- Extractor units
- Exhaust extraction (engine manufacturing)
- Hot air
- Smoke extractors
- Defence systems
- Aircraft manufacturing

### Available in:

DN 38 - DN 900  
Color: silver-grey/ green-grey  
Stock lengths: see internet  
max. production length:  
20 m dep. DN

### Temperature Range

-60 °C to +300 °C  
peaks to +350 °C

## Master-Clip ISO-CAR



Medium and high temperature hose up to +300 °C, double-layered

### Applications

- Diesel engine test-benches with higher extraction performance
- Machine manufacturing
- Automotive manufacturing
- Low pressure range
- Extractor units
- Hot air
- Smoke extractors
- Defence systems
- Aircraft manufacturing

### Available in:

DN 38 - DN 900  
Color: silver-grey/ green-grey  
Stock lengths: see internet  
max. production length:  
20 m dep. DN

### Temperature Range

-60 °C to +300 °C  
peaks to +350 °C

## Master-Clip HT 400



Medium and high temperature hose up to +400 °C

### Applications

- Oven manufacturing
- Heat protection
- Mining and steel industry
- Primarily suitable as suction/extractor hose
- Limited suitability for exhaust gas extraction
- Machine manufacturing
- Low pressure range
- Extractor units
- Hot air
- Smoke extractors

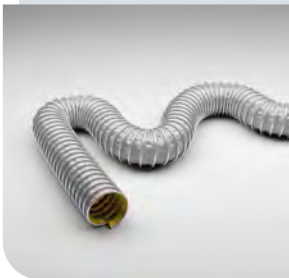
### Available in:

DN 38 - DN 900  
Color: silver-grey  
Stock lengths: see internet  
max. production length:  
20 m dep. DN

### Temperature Range

-20 °C to +400 °C  
peaks to +450 °C

## Master-Clip KAPTON®



Medium and high temperature hose up to +400 °C, excellent chemical resistance

### Applications

- Suction of aggressive gases at high temperatures
- Exhaust gas routing in gauge pressure & low pressure ranges
- Vehicle and engine manufacturing
- Exhaust gas extraction for high-performance engine test-benches in the Automotive industry

### Available in:

DN 50 - DN 900  
Color: white/ yellow-gold  
Stock lengths: see internet  
max. production length:  
15 m dep. DN

### Temperature Range

-260 °C to +400 °C

## Master-Clip HT 450



Exhaust gas hose for exhaust fumes/gases up to +450 °C, double-layered

### Applications

- Diesel engine test-benches with higher extraction performance
- Machine manufacturing
- Automotive manufacturing
- Low pressure range
- Extractor units
- Hot air
- Smoke extractors
- Defence systems
- Aircraft manufacturing

### Available in:

DN 50 - DN 900  
Color: silver-grey  
Stock lengths: see internet  
max. production length:  
15 m dep. DN

### Temperature Range

-20 °C to +450 °C  
peaks to +500 °C

# Temperature-Resistant Hoses up to +1.100 °C

## Master-Clip HT 500



Medium and high temperature hose up to +500 °C

### Applications

- Exhaust gas routing in gauge pressure & low pressure range
- Vehicle and engine manufacturing
- Exhaust gas extraction in Automotive industry with higher temperature demands

### Available in:

DN 75 - DN 900  
Color: inside silver, outside red  
Stock lengths: see internet  
max. production length: 10 m dep. DN

### Temperature Range

-20 °C to +500 °C  
peaks to +550 °C

## Master-Clip HT 650



Exhaust gas hose for exhaust fumes/gases up to +650 °C

### Applications

- Infrared drying units
- Oven manufacturing
- Exhaust gas extraction for high-performance engine test-benches in the Automotive industry
- Automotive and aircraft industry
- Shipbuilding industry
- Heat protection
- Smoke extraction
- Mining and steel industry
- Machine manufacturing

### Available in:

DN 50 - DN 900  
Color: silver-grey  
Stock lengths: see internet  
max. production length: 15 m dep. DN

### Temperature Range

-20 °C to +650 °C  
peaks to +750 °C

## Master-Clip HT 1100



Exhaust gas hose for exhaust fumes/gases up to +1100 °C

### Applications

- Oven manufacturing and heat protection
- Automotive, aircraft & shipbuilding industries
- Defence systems
- Mining and steel industry
- Exhaust gas extraction for high-performance engine test-benches in the Automotive industry
- Suction of turbojet engine exhaust fumes
- Exhaust gas extraction for larger engines
- Extreme temperature demands
- Suction/extraction during spark formation

### Available in:

DN 75 - DN 900  
Color: silver-grey  
Stock lengths: see internet  
max. production length: 15 m dep. DN

### Temperature Range

-20 °C to +1100 °C

# 9



## Chemical-Resistant Hoses

### Suction and transport hoses for aggressive gases and fine-particled media such as dusts and powders in the chemicals industry

#### Master-PE LF EL



PE Film Hose, super lightweight, highly flexible, electroconductive, surface resistance  $\leq 10^4$  Ohm

#### Applications

- Suction/extraction of chemical fumes and gases in ventilation and air conditioning

#### Available in:

DN 40 - DN 600  
Color: black  
Stock lengths: see internet  
max. production length: 25 m dep. DN

#### Temperature Range

-40 °C to +60 °C  
peaks to +80 °C

#### Master-PE L EL



PE Suction and Transport Hose, lightweight, highly flexible, electroconductive, surface resistance  $\leq 10^4$  Ohm

#### Applications

- Suction & transport hose for aggressive gases and liquids
- Transport of fine-grained particles, such as dust and powder
- Oil mist extraction/suction
- Danger zones, which require electrically conductive hoses

#### Available in:

DN 25 - DN 300  
Color: black  
Stock lengths: see internet  
max. production length: 25 m dep. DN

#### Temperature Range

-35 °C to +80 °C  
peaks to +120 °C

#### Master-Clip VINYL EL



Suction and Blower Hose made from PVC-coated polyester fabric, antistatic, surface resistance  $< 10^6$  Ohm

#### Applications

- Danger zones, which requires electro-conductivity acc. to TRBS
- Suction and conveyance of aggressive media, explosive gases and fumes
- Air supply & extraction in explosion-protected areas
- For greater mechanical demands
- Low pressure range
- Extractor units

#### Available in:

DN 50 - DN 900  
Color: black  
Stock lengths: see internet  
max. production length: 20 m dep. DN

#### Temperature Range

-20 °C to +70 °C  
peaks to +80 °C

# Chemical-Resistant Hoses

## Master-Clip NEOPREN



Medium and high temperature hose up to +125 °C

### Applications

- Air-conditioning and ventilation systems
- Engine manufacturing
- Exhaust gas extraction
- Suction/extraction of aggressive media
- Transport of hot and cold air
- Automotive manufacturing
- Low pressure range
- Chemicals industry

### Available in:

DN 38 - DN 900

Color: black

Stock lengths: see internet  
max. production length:  
25 m dep. DN

### Temperature Range

-35°C to +125 °C

peaks to +150 °C

## Master-Clip HYPALON®



Medium and high temperature hose up to +175 °C

### Applications

- Air-conditioning and ventilation systems
- Engine manufacturing
- Exhaust gas extraction
- Suction/extraction of aggressive media
- Transport of hot and cold air
- Granulate drying
- Standard industrial hose
- Automotive manufacturing
- Low pressure range
- Extractor units

### Available in:

DN 38 - DN 900

Color: black/ inside green

Stock lengths: see internet  
max. production length:  
25 m dep. DN

### Temperature Range

-40 °C to +175 °C

peaks to +190 °C

## Master-Clip VITON®



Medium and high temperature hose up to +210 °C

### Applications

- Paint mist extraction
- Suction/extraction of aggressive media in medium Temperature Range
- Low pressure range
- Chemicals industry

### Available in:

DN 38 - DN 900

Color: red/ black

Stock lengths: see internet  
max. production length:  
25 m dep. DN

### Temperature Range

-25 °C to +210 °C

peaks to +240 °C

## Master-Clip VITON® EL



Suction and Blower hose made from VITON®-coated Polyester fabric, for corrosive media up to +210 °C, electroconductive, surface resistance  $\leq 10^4$  Ohm

### Applications

- Danger zones, which requires electro-conductivity acc. to TRBS
- Paint mist extraction
- Suction/extraction of aggressive media in medium Temperature Range
- Low pressure range
- Chemicals industry

### Available in:

DN 38 - DN 900

Color: black

Stock lengths: see internet  
max. production length:  
25 m dep. DN

### Temperature Range

-25 °C to +210 °C

peaks to +240 °C

## Master-Clip PTFE



Suction and Blower Hose for aggressive media up to +250 °C

### Applications

- Paint mist extraction
- Paint, wood and paper industry
- Solvent extraction
- Suction/extraction of aggressive media
- Pharmaceuticals industry
- Chemicals industry
- Low pressure range

### Available in:

DN 40 - DN 900

Stock lengths: see internet  
max. production length:  
20 m dep. DN

### Temperature Range

-150 °C to +250 °C

peaks to +270 °C

# Chemical-Resistant Hoses

## Master-Clip PTFE EL



Suction and Blower Hose for corrosive media up to +280 °C, electroconductive, surface resistance < 10<sup>6</sup> Ohm

### Applications

- Danger zones, which requires electro-conductivity acc. to TRBS
- Suction & conveyance of aggressive media, explosive gases and fumes
- Paint mist extraction
- Paint, wood and paper industry
- Solvent extraction
- Phamaceuticals industry
- Low pressure range
- Chemicals industry

### Available in:

DN 55 - DN 900  
Color: black  
Stock lengths: see internet  
max. production length: 10 m dep. DN

### Temperature Range

-150 °C to +280 °C  
peaks to +300 °C

## Master-Clip PTFE H



Suction and Blower Hose for aggressive media up to +175 °C

### Applications

- Suction & conveyance of aggressive media, explosive gases and fumes
- Paint mist extraction
- Paint, wood and paper industry
- Solvent extraction
- Phamaceuticals industry
- Low pressure range
- Chemicals industry

### Available in:

DN 38 - DN 900  
Color: inside white, outside black  
Stock lengths: see internet  
max. production length: 25 m dep. DN

### Temperature Range

-40 °C to +175 °C  
peaks to +190 °C

## Master-Clip PTFE H EL



Suction and Blower Hose for corrosive media up to +175 °C, electroconductive, surface resistance < 10<sup>6</sup> Ohm

### Applications

- Danger zones, which requires electro-conductivity acc. to TRBS
- Suction and conveyance of aggressive media, explosive gases and fumes
- Paint mist extraction
- Paint, wood and paper industry
- Solvent extraction
- Phamaceuticals industry
- Low pressure range
- Chemicals industry

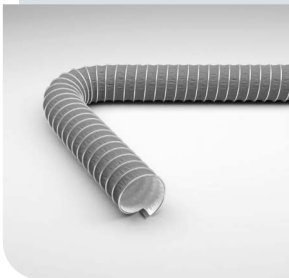
### Available in:

DN 38 - DN 900  
Color: black  
Stock lengths: see internet  
max. production length: 20 m dep. DN

### Temperature Range

-40 °C to +175 °C  
peaks to +190 °C

## Master-Clip PTFE S



Suction and Blower Hose for aggressive media up to +250 °C

### Applications

- Suction and conveyance of aggressive media, explosive gases and fumes
- Paint mist extraction
- Paint, wood and paper industry
- Solvent extraction
- Phamaceuticals industry
- Low pressure range
- Chemicals industry

### Available in:

DN 50 - DN 900  
Color: inside white, outside black  
Stock lengths: see internet  
max. production length: 10 m dep. DN

### Temperature Range

-70 °C to +250 °C  
peaks to +270 °C

## Master-Clip PTFE S EL



Suction and Blower Hose for corrosive media up to +250 °C, electroconductive, surface resistance < 10<sup>6</sup> Ohm

### Applications

- Danger zones, which requires electro-conductivity acc. to TRBS
- Suction and conveyance of aggressive media, explosive gases and fumes
- Paint mist extraction
- Paint, wood and paper industry
- Solvent extraction
- Phamaceuticals industry
- Low pressure range
- Chemicals industry

### Available in:

DN 50 - DN 900  
Color: black  
Stock lengths: see internet  
max. production length: 10 m dep. DN

### Temperature Range

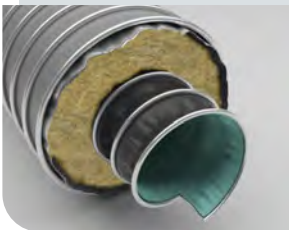
-70 °C to +250 °C  
peaks to +270 °C



## Custom-Designed Clip Hoses

# Custom-made designs for preventing temperature loss and for applications in all industrial sectors

### Thermo & Insulating Hoses



Multi-layered hose combinations with specially adapted insulated hoses

#### Applications

- Air-conditioning and ventilation systems
- Heat and cold protection
- Machine manufacturing
- Automotive manufacturing

#### Available in:

DN: on request  
Production lengths: up to ca. 5 m

#### Temperature Range

dep. on materials applied

### Master-Clip Scaled Hoses



Double-layered hose design with scales on inner hose lining

#### Applications

- Loading and sieving technology
- Welding fume extraction with greater degree of flying sparks
- Exhaust gas extraction
- Applications, for which abrasive particles or sparks are to be kept away from the external hose material by the internal scale-like design of the hose

#### Available in:

DN: on request  
Production lengths: 3 m

#### Temperature Range

dep. on materials applied

### Multi-Layered Master-Clip Hoses



Single or multi-layered hose designs with various fabric combinations

#### Applications

- Air-conditioning and ventilation systems
- Exhaust gas extraction
- Suction of gaseous media with special requirements for internal and external hose layers
- High Temperature Range
- Chemicals industry

#### Available in:

DN: on request  
Production lengths: 3 m

#### Temperature Range

dep. on materials applied

### Master-Clip Combo



Combination of different Clip materials

#### Applications

- Almost unlimited applications in field of air, gas and exhaust fume extraction/suction

#### Available in:

DN: on request  
Production lengths: 3 m

#### Temperature Range

dep. on materials applied



## Custom-Designed Clip Hoses

Our range of materials includes almost all thermoplastics that can be processed

### Master-Tube PUR



Polyester-Polyurethane Tube: Offers a flexible solution - even under great pressure

#### Applications

- Mechanical Engineering
- Robotics and Automation

#### Available in:

ID: 1 - 33 mm / OD: 1,5 - 40 mm  
Colors: natural, blue, black  
Other variants on request  
Variations: Rolled Goods, Cut Goods, Multi-tube, Spiralled or Moulded Form Tubes

#### Temperature Range

-40 °C to +85 °C

### Master-Tube PUR Food



Food-approved PU hose

#### Applications

- Agriculture
- Chemicals
- Food Industry
- Mechanical Engineering
- Robotics and Automation
- Transport

#### Available in:

ID: 2 - 11 mm / OD: 4 - 16 mm  
Colors: many opaque and transparent colour variants on request  
Variations: Rolled Goods, Cut Goods, Multi-tube, Spiralled or Moulded Form Tubes

#### Temperature Range

-40 °C to +85 °C

### XFlame®



Hardly inflammable PU tube, weld spatter resistant, self-extinguishing, abrasion resistant

#### Applications

- Mechanical Engineering
- Robotics and Automation

#### Available in:

ID: 2 - 11 mm / OD: 4 - 16 mm  
Colors: black, blue, red, green, white, ...  
Other variants on request  
Variations: Rolled Goods, Cut Goods, Multi-tube, Spiralled or Moulded Form Tubes

#### Temperature Range

-40 °C to +90 °C

# Custom-Designed

## XFlame soft®



Flexible PU tube, self-extinguishing, hardly inflammable

### Applications

- Welding equipment/machines
- Welding robots/ spot welding guns
- Drag chains
- Special cables
- Welding technology
- Bonding technology
- Fire technology
- Cooling/hot water applications

### Available in:

ID: 2 - 11 mm / OD: 4 - 16 mm  
Colors: black, blue  
Other variants on request  
Variations: Multiple tubes  
Coil tubes, Performed tubes, Rolls, Sections

### Temperature Range

-40 °C to +90 °C

## XFlame hydro®



Self-extinguishing PU tube, weld spatter resistant, very elastic

### Applications

- Welding equipment/machines
- Welding robots/ spot welding guns
- Drag chains
- Special cables
- Pneumatic systems
- Welding technology
- Bonding technology
- Fire technology
- Cooling/hot water applications

### Available in:

ID: 2 - 11 mm / OD: 4 - 16 mm  
Colors: black, blue, red, green, white, ...  
Other variants on request  
Variations: Rolled Goods, Cut Goods, Multi-tube, Spiralised or Moulded Form Tubes

### Temperature Range

-40 °C to +90 °C

## Master-Tube PA



Polyamide tube complies with DIN 73378/74324, ... the solution under pressure under increased temperatures, LABS-free, impact-resistant

### Applications

- Automotive
- Agriculture
- Painting Technology
- Mechanical Engineering
- Robotics and Automation
- Transport

### Available in:

ID: 0,5 - 34mm / OD: 1 - 38 mm  
Colors: natural, blue, black  
Other variants on request  
Variations: Rolled Goods, Cut Goods, Multi-tube, Spiralised or Moulded Form Tubes

### Temperature Range

-40 °C to +90 °C

## Master-Tube PA 6.12w



Modified polyamide tube, abrasion-resistant, LABS-free, impact-resistant

### Applications

- Automotive
- Agriculture
- Painting Technology
- Mechanical Engineering
- Robotics and Automation
- Transport

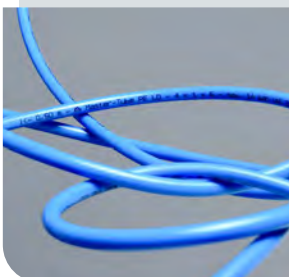
### Available in:

ID: 2 - 18 mm / OD: 4 - 22 mm  
Colors: natural, blue, black  
Other variants on request  
Variations: Rolled Goods, Cut Goods, Multi-tube, Spiralised or Moulded Form Tubes

### Temperature Range

-40 °C to +90 °C

## Master-Tube PE



Polyethylene-based tube, LABS-free, impact-resistant

### Applications

- Mechanical Engineering
- Robotics and Automation
- Agriculture
- Painting Technology

### Available in:

ID: 1 - 41 mm / AD: 2 - 42,6 mm  
Colors: natural, blue, black  
Other variants on request  
Variations: Rolled Goods or Cut Goods

### Temperature Range

-30 °C to +70 °C

## Master-Tube PA Brake



Special polyamide tube for brake and vehicle technology

### Applications

- Mechanical Engineering
- Automotive

### Available in:

ID: 2 - 16 mm / OD: 4 - 20 mm  
Colours: black  
Other options on request  
Variations: Rolls

### Temperature Range

-40 °C to +90 °C

## PA Duopart®



Polyamide twin hose as burr-free connection solution

### Applications

- Suitable for push-in connectors
- Pneumatic control line
- Automotive
- Vacuum

### Available in:

ID: 2 - 8 mm / OD: 4 - 10 mm  
Colours: black, blue  
Other options on request  
Variations: Multiple tubes, Rolls

### Temperature Range

-40 °C to +85 °C

## Master-Tube PA E



Polyamide hose with elastomer components

### Applications

- Mechanical Engineering
- Robotics and Automation
- Automotive
- Pneumatic systems
- Energy supply system
- Control air

### Available in:

ID: 2 - 9 mm / OD: 4 - 12 mm  
Color: nature, black, blue  
Other options on request  
Variations: Multiple hose  
Spiralized, molded hose, rolled, cut to length

### Temperature Range

-40 °C to +85 °C

## Master-Tube PVDF



PVDF hose particularly resistant to chemicals and temperatures

### Applications

- Chemical industry
- Mechanical engineering
- Laboratory technology
- Painting and paint spraying technology
- Pneumatic systems
- Paint and dosing systems
- Laboratory units
- Feeding- and conveying hose

### Available in:

ID: 2 - 10 mm / OD: 4 - 12 mm  
Color: nature  
Other options on request  
Variations: Molded hose, rolled, cut to length

### Temperature Range

-40 °C to +150 °C

## Master-Tube PP



Polypropylene hose, chemical resistant and food safe according to FDA21 CFR 177.250

### Applications

- Chemical industry
- Mechanical engineering
- Food industry
- Laboratory technology
- Painting and paint spraying technology
- Pneumatic systems
- Paint and dosing systems
- Laboratory units
- Feed- and transport hose
- Riser tubes

### Available in:

ID: 2 - 19 mm / OD: 3,5 - 23 mm  
Color: nature  
Other options on request  
Variations: Molded hose, roll goods, cut goods

### Temperature Range

-25 °C to +90 °C

## Master-Tube TPE



Modified thermoplastic elastomer-based hose, temperature-resistant and flame-retardant

### Applications

- Chemical industry
- Mechanical engineering
- Paint and paint spraying technology
- Paint and metering systems

### Available in:

ID: 2 - 30 mm / OD: 4 - 35 mm  
Color: nature  
Other options on request  
Variations: Roll goods, Cut-to-size

### Temperature Range

-40 °C to +125 °C

## Master-Tube TPEE



Modified hose with high mechanical strength and good flexibility

### Applications

- Mechanical Engineering
- Robotics and Automation
- Automotive
- Pneumatic systems
- Robotic systems
- Energy supply system
- Control air

### Available in:

ID: 2 - 11 mm / OD: 4 - 14 mm  
Color: nature, black  
Other options on request  
Variations: Spiralized, molded hose, roll stock, cut-to-length stock

### Temperature Range

-40 °C to +120 °C

## Master-Tube PUR 98A Duo & Trio Master-Tube PA 12w Duo & Trio



Modified hose with high mechanical strength and good flexibility

### Applications

- Low weight
- Very good abrasion resistance
- No need for hose bundling
- Space-saving
- Easy assignment due to color differentiation
- Combination air/electric by pulling in or as customer supply for welded to the hose possible
- Techn. product features See standard Pneumatic tubing „Master-Tube PUR 98A“ or „Master-Tube PA 12w“

### Available in:

Color: blue/black  
blue/black/nature  
Variations: Spiralized, rolled, cut to length  
Special sizes, color & tube combinations on request

### Temperature Range

-40 °C to +85 °C (98A)  
-40 °C to +90 °C (12w)

## Master-Tube PUR 98A Spiral Master-Tube PA 12w Spiral



### Applications

- High restoring force
- Low weight
- Good pressure stability
- Easy handling
- Space saving
- Endings on customer request axial, radial tapered, also available in combination
- Technical product features See standard Pneumatic tubing „Master-Tube PUR 98A“ or „Master-Tube PA 12w“

### Available in:

Color: blue  
Variations: Spiralized  
Special sizes, color & hose combinations on request

### Temperature Range

-40 °C to +85 °C (98A)  
-40 °C to +90 °C (12w)

# 12



## PU-Lined Pipes and Pipe-Bends

### Innovative Wear Protection for Pipes and Pipe-Bends

#### Master-PROTECT® Pipe-bend



PU-lined pipe-bend

#### Applications

- Pneumatic conveying plants

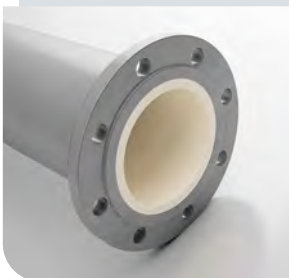
#### Available in:

DN 50 - DN 200  
Color of lining: beige  
Pressure range:  
PN 6 - PN 10/16

#### Temperature Range

-40 °C to +80 °C  
peaks to +110 °C

#### Master-PROTECT® Rohr



PU-ausgekleidetes Rohr

#### Applications

- Pneumatic conveying plants

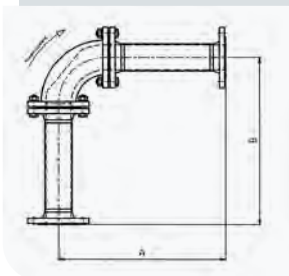
#### Available in:

DN 50 - DN 200  
Color of lining: beige  
Pressure range:  
PN 6 - PN 10/16

#### Temperature Range

-40 °C to +80 °C  
peaks to +110 °C

#### Master-PROTECT® Montageset



Connector pipes for Master-PROTECT® pipe-bend

#### Applications

- Pneumatic conveying plants

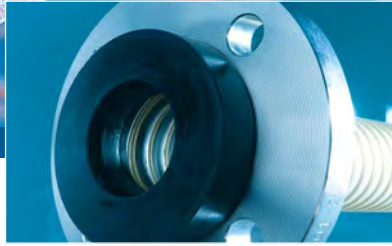
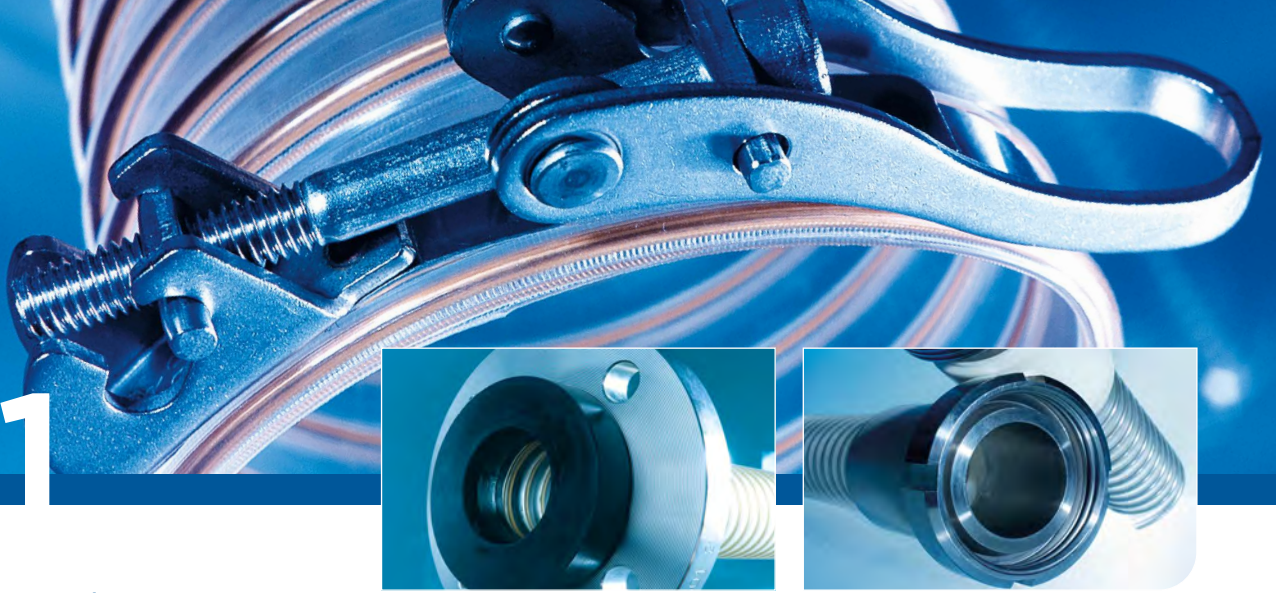
#### Available in:

DN 50 - DN 200  
Pressure range:  
PN 6 - PN 10/16

#### Temperature Range

-40 °C to +80 °C  
peaks to +110 °C

# 13.1



## Installation and Connections: Clamps

**Connection solutions for almost any application,  
from standard connectors to tailor-made  
and customer-specific connections**

### Clip-Grip Hose Clamp, screwable



Special clamp for Master-Clip hoses

#### Applications

- Special clamp for all hose types from Master-Clip series for mobile and stationary units

#### Available from stock in:

Clamping range from 40/60 mm to 900/920 mm  
Strap, bridge and housing made from steel

### Clip-Grip Quick-Fix Clamp



Special clamp for Master-Clip hoses

#### Applications

- Special clamp for all hose types from Master-Clip series for mobile and stationary units

#### Available from stock in:

Clamping range from 75/82 mm to 500/507 mm  
Strap, bridge and housing made from stainless steel 1.4301

### Master-Grip Hose Clamp, screwable



Special clamp for right-lay hoses

#### Applications

- Special clamp for lighter and medium duty, right-lay spiral hoses such as Flamex B-se, Flamex B-F se, Master-PUR, Master-PVC and Master-SANTO

#### Available from stock in:

Clamping range from 35/44 mm to 500/520 mm  
Strap, bridge and housing made from steel

# Installation and Connections: Clamps

## Master-Grip Quick-Fix Clamp

Special clamp for right-lay hoses



### Applications

- Special clamp for lighter and medium duty, right-lay spiral hoses such as Flamex B-se, Flamex B-F se, Master-PUR, Master-PVC and Master-SANTO

### Available from stock in:

Clamping range from 75/82 mm to 500/507 mm  
Strap, Bridge and Hosing made from stainless steel 1.4301

## Car-Grip Hose Clamp, screwable

Special clamp for Carflex-Super and Master-PUR STEP hoses



### Applications

- Special clamp for Carflex Super and Master-PUR STEP hoses for mobile and stationary units

### Available from stock in:

Clamping range from 50/70 mm to 250/270 mm  
Strap, Bridge and Hosing made from steel

## Car-Grip Quick-Fix Clamp

Special clamp for Carflex-Super and Master-PUR STEP hoses



### Applications

- Special clamp for Carflex Super and Master-PUR STEP hoses for mobile and stationary units

### Available from stock in:

Clamping range from 75/82 mm to 500/507 mm  
Strap, Bridge and Hosing from stainless steel 1.4301

## Hose Clamp with Worm-Gear

Standard clamp for universal requirements



### Applications

- Special clamp for mounting light hose types onto connector brackets on mobile and stationary units

### Available from stock in:

Clamping range from 25/40 mm to 500/520 mm  
Strap, Bridge and Hosing made from steel

## Hose Clamp with Bolts

for heavier hoses



### Applications

- Special clamp for connecting medium and heavy duty hoses to connectors on mobile and stationary units

### Available from stock in:

Clamping range from 32/35 mm to 500/518 mm  
Strap and screw made from galvanised steel

# Installation and Connections: Clamps

## Master-Grip Double Wire Clamp, screw-fitting



Special clamp with double-wire system, stainless steel, for right-winding hoses/ducting

### Applications

- Special clamp for attaching light and medium-weight, right-winding spiral hoses ducting such as Flamex B-se, Flamex B-F se, Master-PUR Trivolution, Master-PUR Food, Master-PVC and Master-SANTO

### Available from stock in:

Clamping range 31/37 mm to 246/266 mm  
Strap, Bridge and Hosing from stainless steel 1.4301

## Quick-Fix Clamp for Cone Flanges



quick-fix clamps for cone flanges in acc.to DIN 3016

### Applications

- Reductions with cone flanges
- Combiflex PU cone flanges
- Steel piping with cone flanges
- Pipe bends/elbows with cone flanges for quick connectors from: Metal columns with cone flanges

### Available from stock in:

Clamping range: see internet

## Combiflex Clamp Connection Hinged Clamp



For use in connections to machines and pipelines

### Applications

- Fittings for solid, liquid and gaseous media in the - food industry - pharmacy - chemistry
- creates liquid-tight connections
- odorless and tasteless
- hot steam sterilizable
- good chemical resistance
- high tensile and tear strength

### Available from stock in:

Clamping range: see internet

# 13.2

## Installation & Connections: Plastic Connectors

Connection solutions for almost any application,  
from standard connectors to tailor-made  
& customer-specific connections

### Combiflex PU Cone Flange



acc. to  
DIN 3016

#### Applications

- Screwable quick connection system for all Master-PUR L, Master-PUR H and Master-PUR HX hose types
- Screwable and cast-on mountings

#### Available in:

DN 50 - DN 250  
Color: black

#### Temperature Range

-40 °C to +90 °C  
peaks to +125 °C

### Combiflex PU Cone Flange permanently installed



fixed quick connector  
system for all Master-  
PUR L, Master-PUR H and  
Master-PUR HX hoses,  
following DIN 3016

#### Applications

- For all Master-PUR L, Master-PUR H and Master-PUR HX hose types

#### Available in:

DN 50 - DN 250  
Color: black

#### Temperature Range

-40 °C to +90 °C  
peaks to +125 °C

### Combiflex PU Cone Flange Food



fixed quick connector  
system for all Master-PUR  
Food hose types, following  
DIN 3016, food-safe  
EU 10/2011

#### Applications

- Permanently molded quick connector for all Master-PUR Food hose types
- Approved for direct food contact

#### Available in:

DN 50 - DN 200  
Color: white

#### Temperature Range

-40 °C to +90 °C  
peaks to +125 °C

# Installation & Connections: Plastic Conneters

## Combiflex PU Fixed Flange



screw-on plastic flange for Master-PUR L, Master-PUR H, Master-PUR HX and Master-PUR Performance, for counterflanges according to DIN 2632 / DIN 2633 / DIN 2673

### Applications

- PU flange for all Master-PUR L, Master-PUR H and Master-PUR HX Hose types
- Screw-on or permanently mounted

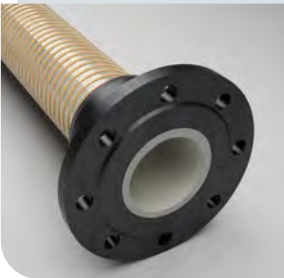
### Available in:

DN 50 - DN 300  
Color: black

### Temperature Range

-40 °C to +90 °C  
peaks to +125 °C

## Combiflex Cast-on PU Fixed Flange



Fixed PU flange for all Master-PUR hoses, for counterflanges to DIN 2632 / DIN 2633 / DIN 2673

### Applications

- Permanently cast PU flange for all Master-PUR Inline and Master-PUR performance hose types

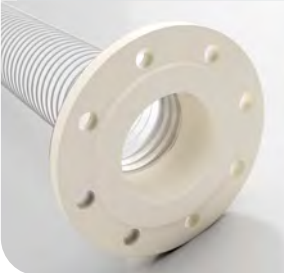
### Available in:

DN 50 - DN 204  
Color: black

### Temperature Range

-40 °C to +90 °C  
peaks to +125 °C

## Combiflex Cast-on PU Fixed Flange Food



fixed flange for all Master-PUR Food hose types, approved for direct food contact EU 10/2011, for counterflanges acc. to DIN 2632 / DIN 2633 / DIN 2673

### Applications

- Permanently molded PU flange for all Master-PUR Food hose types
- Approved for direct food contact

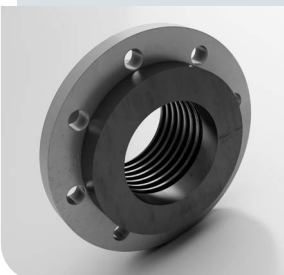
### Available in:

DN 50 - DN 150  
Color: white

### Temperature Range

-40 °C to +90 °C  
peaks to +125 °C

## Combiflex PU Swivel Flange



screw-on plastic collar with loose flange for Master-PUR L, Master-PUR H, Master-PUR HX and Master-PUR Performance, for counterflanges acc. to DIN 2632 / DIN 2633 / DIN 2673

### Applications

- PU flange for all Master-PUR L, Master-PUR H and Master-PUR HX Hose types
- Screw-on or permanently mounted

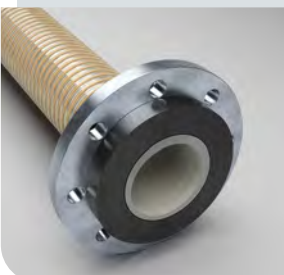
### Available in:

DN 50 - DN 300  
Color: black

### Temperature Range

-40 °C to +90 °C  
peaks to +125 °C

## Combiflex Cast-on PU Swivel Flange



Fixed cast-on PU loose flange for all Master-PUR hoses, for counterflanges to DIN 2632 / DIN 2633 / DIN 2673

### Applications

- Permanently cast PU flange for Master-PUR Inline and Master-PUR performance hoses

### Available in:

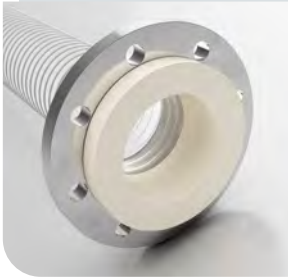
DN 50 - DN 204  
Color: black

### Temperature Range

-40 °C to +90 °C  
peaks to +125 °C

# Installation & Connections: Plastic Conneters

## Combiflex PU Swivel Flange Food



fixed PU flange for all Master-PUR Food hose types. approved for direct food contact EU 10/2011, for counterflanges acc. to DIN 2632 / DIN 2633 / DIN 2673

### Applications

- Permanently molded PU flange for all Master-PUR Food hose types
- Approved for direct food contact

### Available in:

DN 50 - DN 150  
Color: white

### Temperature Range

-40 °C to +90 °C  
peaks to +125 °C

## Combiflex PU Threaded Sockets



PU threaded connector for all Master-PUR L, Master-PUR H and Master-PUR HX hose types, based on DIN ISO 228

### Applications

- PU threaded sockets for all Master-PUR L, Master-PUR H and Master-PUR HX hose types
- Screw-on or permanently mounted

### Available in:

DN 50 - DN 150  
Color: black

### Temperature Range

-40 °C to +90 °C  
peaks to +125 °C

## Combiflex PU Threaded Sockets Food



cast-on PU threaded connector for attaching fittings to Master-PUR Food hoses, approved for direct food contact EU 10/2011, following DIN ISO 228

### Applications

- PU threaded connection for attaching fittings to Master-PUR Food hoses
- Approved for direct food contact

### Available in:

DN 50 - DN 150  
Color: white

### Temperature Range

-40 °C to +90 °C  
peaks to +125 °C

## Streetmaster Cuff



fixed connection sleeve for all Streetmaster hoses

### Applications

- Spiral-free connection sleeve for all Streetmaster hoses, for liquid-tight assembly
- Only permanently mounted on Streetmaster hoses

### Available in:

DN 200, 225, 250, 280 and 400  
Color: black

### Temperature Range

-40 °C to +90 °C  
peaks to +125 °C

## PU Screw Cuff EL



PU end fitting for Master-PUR L/H and Master-PVC L/H hoses, electrically conductive

### Applications

- Special screw socket for Master-PUR L/H and Master-PVC L/H hoses
- Industrial vacuum cleaners
- Suction and blower systems
- Conveyor systems

### Available in:

DN 32 - DN 100  
Color: black

### Temperature Range

-40 °C to +90 °C  
peaks to +125 °C

# Installation & Connections: Plastic Conneters

## Combiflex PU-Cuff A



screw-on PU end fitting for Master-PUR hoses, permanently antistatic

### Applications

- Special sleeve for all Master-PUR L and Master-PUR H hose types
- Screw-on or permanently mounted

### Available in:

DN 125 - DN 300  
Color: black

### Temperature Range

-40 °C to +90 °C  
peaks to +125 °C

## Combiflex PU-Cuff V



screw-on PU end fitting for Master-PUR hoses on spigots acc. to DIN 2448/ DIN 2458, permanently antistatic

### Applications

- Special sleeve for all Master-PUR L and Master-PUR H hose types
- Screw-on or permanently mounted

### Available in:

DN 32 - DN 300  
Color: black

### Temperature Range

-40 °C to +90 °C  
peaks to +125 °C

## Combiflex PU-Hose Connector



screw-on PU hose connector for Master-PUR L and H hoses

### Applications

- Screw-on hose connector for a.o. following hose types: Master-PUR L, Master-PVC L, Master-PUR H, Master-PVC H

### Available in:

DN 25 - DN 100  
Color: black

### Temperature Range

-40 °C to +90 °C  
peaks to +125 °C

## Cuff for Master-PVC-Flex



special cuff for Master-PVC Flex hoses

### Applications

- Industrial vacuum cleaners
- Suction & blower units
- Conveyance units
- Special screw cuff for Master-PVC Flex

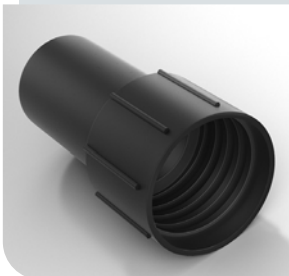
### Available in:

DN 25 - DN 102  
Color: black

### Temperature Range

0 °C to +70 °C

## Cuff for Master-VAC



Special cuff for Master-VAC hoses, electro-conductive

### Applications

- Industrial vacuum cleaners
- Suction & blower units
- Conveyance units

### Available in:

DN 32 - DN 50  
Color: black

### Temperature Range

0 °C to +70 °C

## Installation & Connections: Plastic Conneters

### PU-Hose Sleeve



Reusable special sleeve for connection of spiral hoses from the Masterflex SE hose range, for use with clamp collars

#### Applications

- Reusable special sleeve for binding spiral hoses from the Masterflex the hose program of Masterflex SE

**Available in:**  
DN 38 - DN 204  
Color: black

#### Temperature Range

-40 °C to +90 °C  
peaks to +125 °C

### Heat Shrink Cuff



Heat shrink sleeve for easy connection and sealing of hoses

#### Applications

- Tight connection of spiral hoses or connector brackets with no technical effort required

#### Available from stock in:

Shrink range:  
54/18 to 375/265  
Color: black

#### Temperature Range

-55 °C to +110 °C

# 13.3

## Installation & Connections: Metal Connectors

Connection solutions for almost any application,  
from standard connectors to tailor-made  
& customer-specific connections

### Cone Flange with Metal Socket



Cone flange in accordance  
with DIN 3016

#### Applications

- For quick connections of hoses to:
  - Combiflex PU Cone Flanges
  - Steel pipes with cone flanges
  - Pipe-bends with cone flanges
  - Reducers with cone flanges

#### Available in:

DN 50 - DN 250

### Cast-On Cone Flange



Metal cone flange based  
on DIN 3016

#### Applications

- For quick connections of Combiflex  
PU Cone Flanges to:
  - Steel pipes
  - Pipe-bends
  - Reducers
  - Metal socket
  - Machines

#### Available in:

DN 50 - DN 250

### Quick-Fix Clamp for Cone Flanges



for quick connections  
of Combiflex PU conical  
flanges, weld-on conical  
flanges and conical flanges  
with spigots, following DIN  
3016

#### Applications

- For quick connections of hoses to:
  - Combiflex PU Cone Flanges
  - Steel pipes with cone flanges
  - Pipe-bends with cone flanges
  - Reducers with cone flanges
  - Metal sockets with cone flanges

#### Available in:

DN 50 - DN 250

## Installation & Connections: Metal Connectors

### Combiflex Metal Threaded Sockets



With outer thread  
DIN ISO 228  
- cast-on

#### Applications

- For application for connectors to machines and piping
- For mounting of valves for solid, liquid & gaseous media
- Cast-on metal screw connectors with external thread acc. to DIN ISO 228 for all Master-PUR hoses

#### Available in:

DN 25 - DN 150  
Color: black

#### Temperature Range

-40 °C to +90 °C  
peaks to +125 °C

### Combiflex Clamp Connection Clamps



acc. to DIN 32676  
- cast-on

#### Applications

- Fitting for solid, liquid & gaseous media in:
  - Food industry
  - Pharmaceuticals industry
  - Chemicals industry
- Cast-on clamp connector acc. to DIN 32676 for all Master-PUR Food hoses

#### Available in:

DN 32 - DN 150

#### Temperature Range

-40 °C to +90 °C  
peaks to +125 °C

### Combiflex Clamp Connection Hinged Clamp



For clamp connections  
acc. to  
DIN 32676

#### Applications

- Fitting for solid, liquid & gaseous media in:
  - Food industry
  - Pharmaceuticals industry
  - Chemicals industry
- For application for connectors to machines and piping

#### Available in:

DS 32 - DS 150

### Combiflex Clamp Connection Ring-Seal



For clamp connections  
acc. to  
DIN 32676

#### Applications

- For application for connectors to machines and piping
- Ring-seal for solid, liquid & gaseous media in:
  - Food industry
  - Pharmaceuticals industry
  - Chemicals industry
- Ring seals for hose brackets with clamp connector acc. to DIN 32676

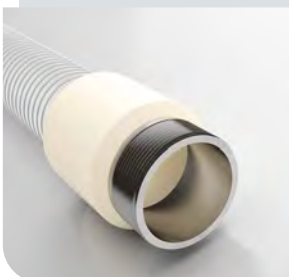
#### Available in:

DS 32 - DS 150  
Color: white

#### Temperature Range

-25 °C to +120 °C  
peaks to +150 °C

### Combiflex VA Threaded Socket Food



With outer thread  
acc.to DIN ISO 228  
- cast-on, Food grade  
Polyurethane acc. to EU  
10/2011

#### Applications

- For application for connectors to machines and piping
- for mounting of fittings for solid, liquid & gaseous media
- Cast-on VA threaded sockets with outer thread acc. to DIN ISO 228 for all Master-PUR Food hoses
- Food industry
- Pharmaceuticals industry
- Chemicals industry

#### Available in:

DN 25 - DN 150  
Color: white / stainless steel

#### Temperature Range

-40 °C to +90 °C  
peaks to +125 °C

# Installation & Connections: Metal Connetors

## Combiflex Dairy Fitting Threaded Hose Sockets



acc. to DIN 11851  
- cast-on, Food grade  
Polyurethane acc. to EU  
10/2011

### Applications

- Fitting for solid, liquid & gaseous media in:
  - Food industry
  - Pharmaceuticals industry
  - Chemicals industry
- Cast-on pipe screw connection acc. to DIN 11851 for Master-PUR Food hoses
- For application for connectors to machines and piping

**Available in:**  
DS 32 - DS 150

**Temperature Range**  
-40 °C to +90 °C  
peaks to +125 °C

## Combiflex Dairy Fitting Cone Sockets



with locknut  
acc. to DIN 11851  
- cast-on/pre-fixed,  
Food grade Polyurethane  
acc. to EU 10/2011

### Applications

- Cast-on pipe screw connection acc. to DIN 11851 for Master-PUR Food hoses
- Fitting for solid, liquid & gaseous media in:
  - Food industry
  - Pharmaceuticals industry
  - Chemicals industry

**Available in:**  
DS 32 - DS 150

**Temperature Range**  
-40 °C to +90 °C  
peaks to +125 °C

## Combiflex Dairy Fitting Ring-Seal



for threaded sockets  
acc. to DIN 11851

### Applications

- For application for connectors to machines and piping
- Ring seals for screw connectors acc. to DIN 11851
- Ring-seals for solid, liquid & gaseous media in:
  - Food industry
  - Pharmaceuticals industry
  - Chemicals industry

**Available in:**  
DS 32 - DS 150

**Temperature Range**  
-25 °C to +120 °C  
peaks to +150 °C

## Clamp Collars, screwed



acc. to DIN EN 14420-3

### Applications

- Versatile applications for spiral hoses from the Masterflex SE hose range when using PU hose sleeves

**Available in:**  
DN 38 - DN 200

## PU-Hose Sleeve



Special sleeve for use with  
clamp collars

### Applications

- Reusable special sleeve for binding of spiral hoses from the hose program of Masterflex SE

**Available in:**  
DS 38 - DS 204  
Color: black

**Temperature Range**  
-40 °C to +90 °C  
peaks to +125 °C

# Installation & Connections: Metal Connetors

## Hose Connector



Sheet steel connectors for lightweight & medium-weight hoses

### Applications

- Extension, coupling & connection of light to medium weight hoses

### Available in:

DN 50 - DN 900

## Hose Reducer, symmetrical



Reducer for lightweight & medium-weight hoses

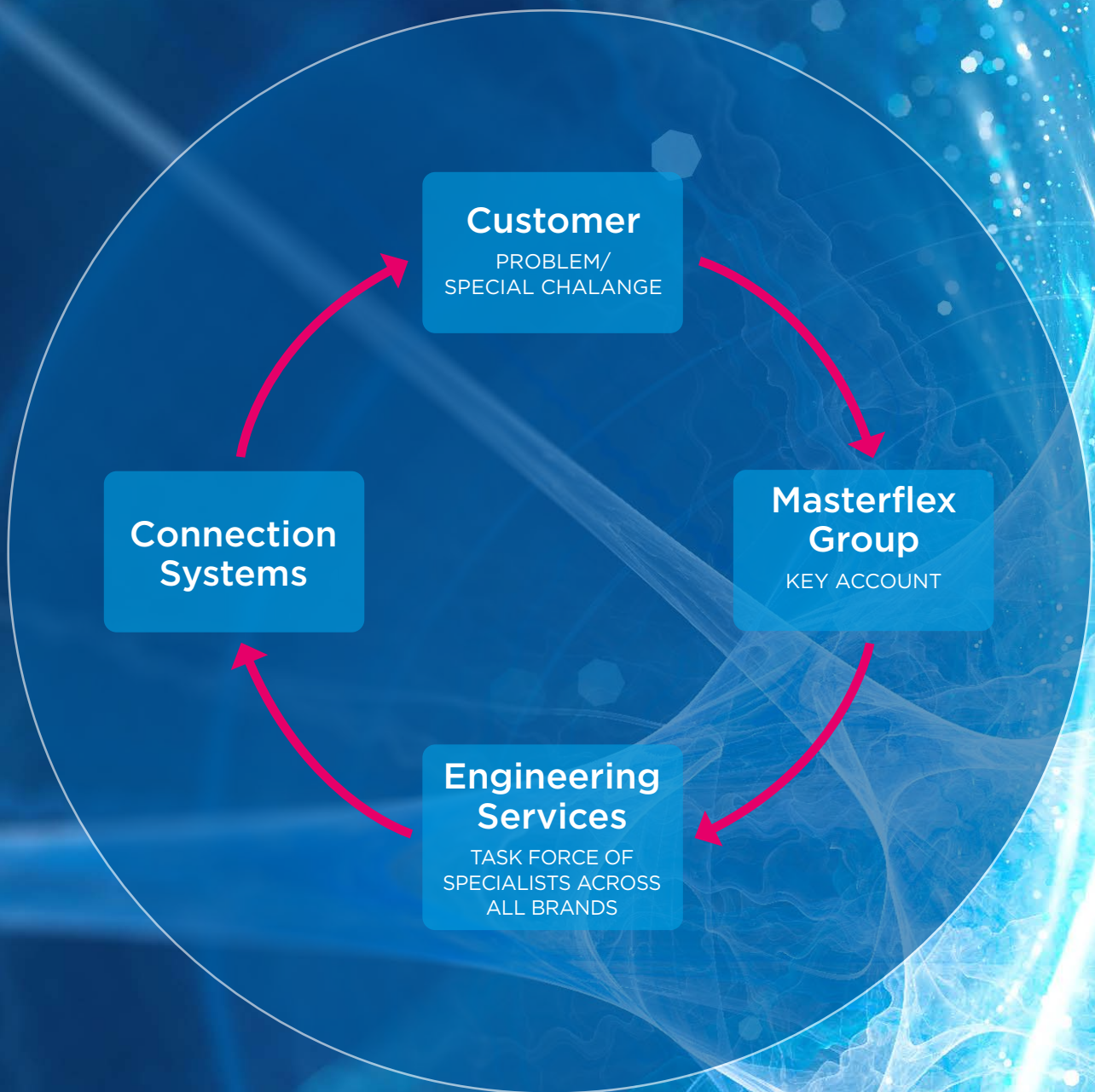
### Applications

- Extension, coupling and connection of light to medium weight hoses

### Available in:

DN 80/50 - DN 300/250

Not the right  
among them? We  
develop your product!  
Take advantage of our engineering services.





Masterflex SE  
Willy-Brandt-Allee 300  
45891 Gelsenkirchen  
Germany  
Tel. +49 209 97077-0  
Fax +49 209 97077-33  
[www.masterflex.de](http://www.masterflex.de)  
[info.masterflex@masterflexgroup.de](mailto:info.masterflex@masterflexgroup.de)  
A MASTERFLEX GROUP COMPANY

 **MASTERFLEX**  
Connecting Values