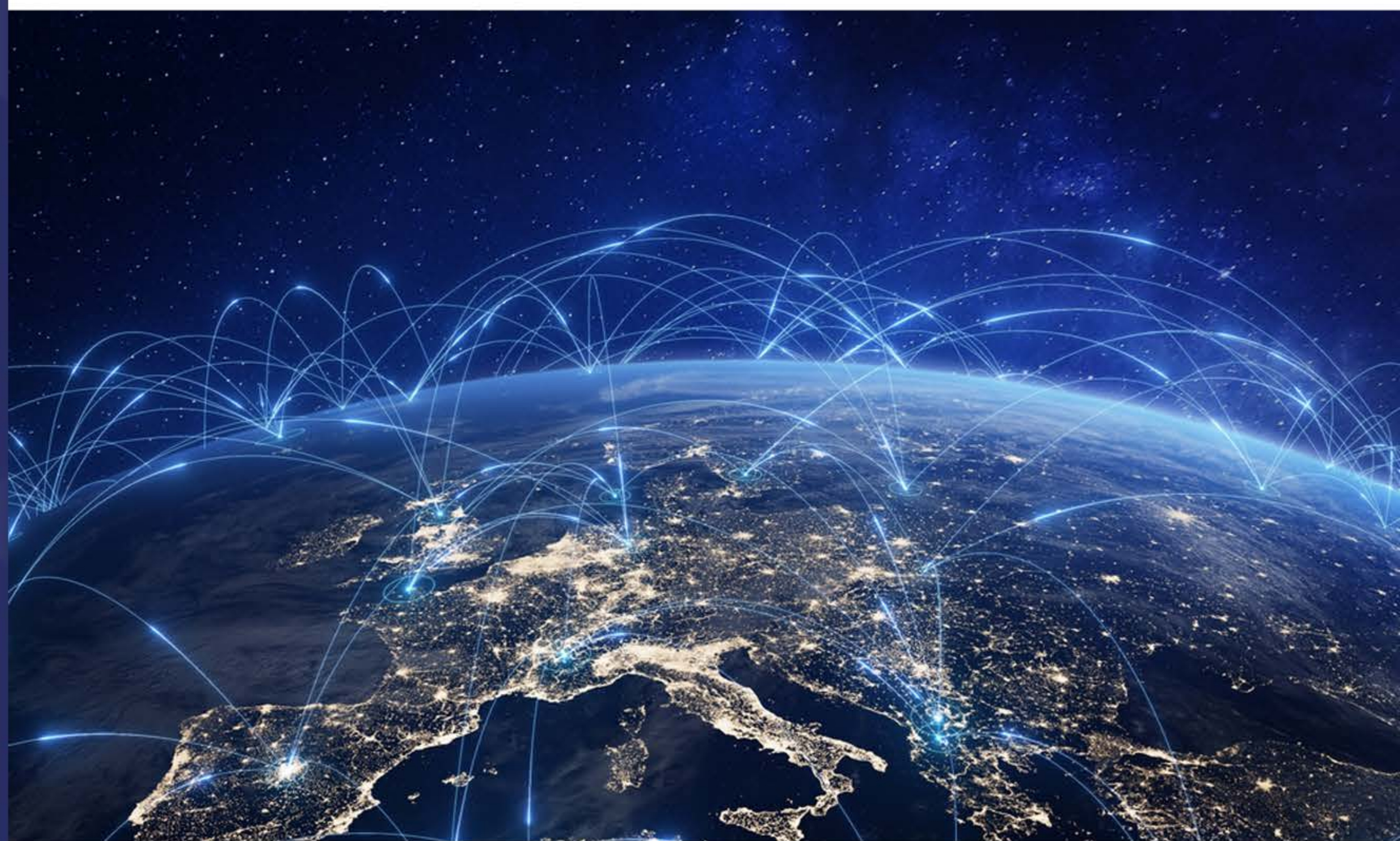


Connectivity products

LiveBench boasts the versatility to host a **diverse range of communications ICs**:

- **Wireless communication** - including Bluetooth, WiFi, Proprietary Wireless, 802.15.4 etc.
- **Wired Communication** - including Ethernet, DALI, CAN, IO-Link etc.

Our comprehensive support empowers Semiconductor companies to showcase their entire communication IC portfolio from a single, unified platform.



Value Proposition

01. Ensure product features are perceived accurately by your customers through creation of a robust cloud-based evaluation setup in partnership with Tenxer Labs.
02. Real-time analytics on evaluation by prospective customers, allowing sales validation and optimizing support efforts.
03. Reduce sales time by 30-40% by enabling customers to evaluate your hardware without logistic delays and support bandwidth restrictions through:
 - Directly test and measure real-time power consumption for unique applications, reducing burden on support teams.
 - Offer a configurable remote testing environment, enabling customers to tailor parameters and replicate real-world conditions for accurate results.
 - Keep system designers updated with the latest firmware, avoiding compatibility issues and streamlining testing.
 - Field sales and support engineers can use LiveBench to reliably showcase complex scenarios, ensuring consistent and repeatable demonstrations.
04. Up to 10% increase in net margin due to reduced support costs.
05. Address long tail customers who are typically ignored due to low volume and customized support requirements.

Key LiveBench Features



Turnkey Hardware Integration

- System design engineers can get started instantly with remote access to cloud-based evaluation boards
- Complete Test Setups for common use-cases with real hardware connected to test equipment such as power meters, oscilloscopes, protocol analysers etc.



Tailored Evaluation Environment

LiveBench supports exclusive environments optimized specifically for the type of connectivity:

- Ultra Low power measurements
- High accuracy distance measurements and ranging (Wireless)
- Throughput measurements
- Monitoring and display of communication protocol messages (DALI, CAN, USB etc.)
- Signal Attenuity testing (Wired)
- Test setups in faraday cage (Wireless)



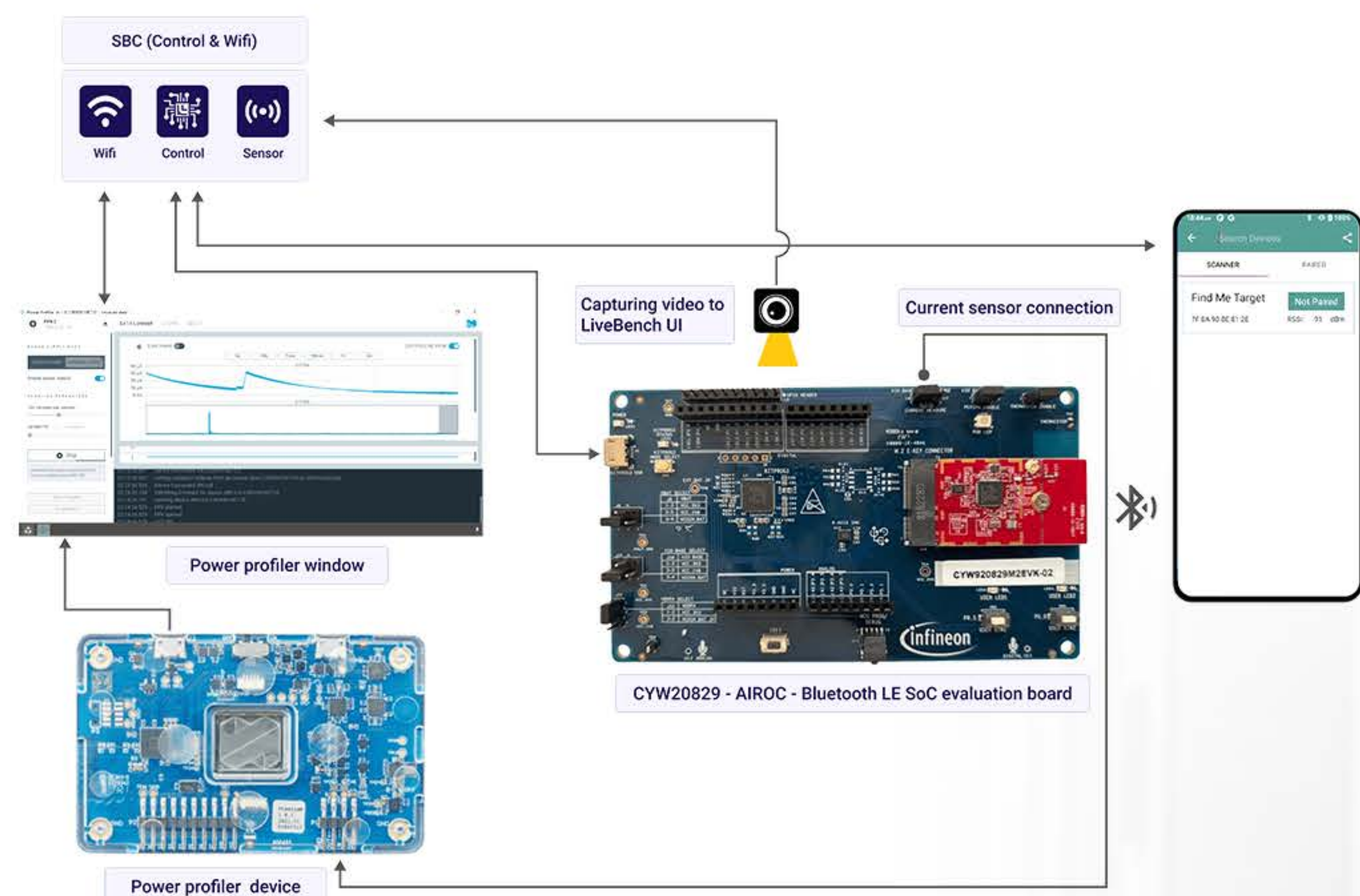
Simplified Maintenance and Upgrades

- TenXer manages hardware maintenance and firmware upgrades.
- 99% uptime of test environments





Lab Setup on LiveBench



Current Hosted Designs / Brands

List of **sample labs hosted on LiveBench** relevant for **Processor applications**:

Click to read more about the lab

Click to view the lab in action

Read more

Bluetooth LE SoC – AIROC CYW20829
Power profiling across different power modes

Click to read more about the lab

Click to view the lab in action

Read more

ST Microelectronics - IO Link Master and Device Boards
Sensor connectivity (temperature, humidity, accelerometer and gyrometer)
**Request details about the lab at contact@tenxerlabs.com.*

Click to view the lab in action

Read more

Silicon Labs - Channel Sounding
Accurate bluetooth ranging up to 5 mts
**Request details about the lab at contact@tenxerlabs.com.*

Click to read more about the lab

Click to view the lab in action

Read more

Renesas - DALI Intelligent Lighting System
Different lighting controls, monitor communication protocol

