

全球战略 GLOBAL STRATEGY



中国苏州总部
SUZHOU CHINA HEADQUARTERS



中国成都子公司
CHENGDU CHINA SUBSIDIARY



韩国子公司
SUWON KOREA SUBSIDIARY



匈牙利子公司
BUDAPEST HUNGARY SUBSIDIARY



新加坡子公司
SINGAPORE SUBSIDIARY



日本子公司
OSAKA JAPAN SUBSIDIARY

SINGLE MACHINE EQUIPMENT 单机设备

BOTAO CONTRIBUTES TO
A ZERO-CARBON SOCIETY

江苏博涛智能热工股份有限公司
JIANGSU BOTAO INTELLIGENT THERMAL ENGINEERING CO.,LTD

联系我们 CONTACT US

中国 CHINA

高先生: +86-137-3260-7026
Mr.Gao: +86-137-3260-7026
Email: gaodaming@suzhoubotao.com

韩国 KOREA

崔先生: +82-10-6277-1942
Mr.Choi: +82-10-6277-1942
Email: moodhunter@naver.com

匈牙利 HUNGARY

周先生: +86-137-3260-6630
Mr.Zhou: +86-137-3260-6630
Email: zhouleng@suzhoubotao.com

日本 JAPAN

小田先生: +86-136-2199-2467
Mr.Oda: +86-136-2199-2467
Email: t_oda@suzhoubotao.com

江苏博涛智能热工股份有限公司
JIANGSU BOTAO INTELLIGENT THERMAL ENGINEERING CO.,LTD

目录 DIRECTORY

01	简介概况 PROFILE	P03
02	主要产品-混合设备 MAIN PRODUCTS - MIXING EQUIPMENT	P05
03	主要产品-干燥设备 MAIN PRODUCTS - DRYING EQUIPMENT	P11
04	主要产品-粉体干燥设备 MAIN PRODUCTS - POWDER DRYING EQUIPMENT	P15
05	技术支持与服务 TECHNICAL SUPPORT AND SERVICES	P21

低碳热工 EPC智能解决方案

INTELLIGENT EPC SOLUTION FOR LOW-CARBON THERMAL PROCESSES



 **2010**
公司成立
Company Establishment

 **400+**
员工人数
Employee Headcount

 **1.06** 亿
注册资本
Registered Capital

 **200+**
申请专利
Patent Applications Filed

公司介绍 COMPANY PROFILE

江苏博涛智能热工股份有限公司成立于2010年,是一家专注于焙烧、混合输送、干燥等智能装备的研发、设计、生产及销售的高新技术企业。公司主要产品包括各类工业窑炉、输送自动线、混合输送设备和干燥处理设备,并提供从混料到包装的一站式解决方案(EPC)。

产品广泛应用于新能源电池材料、电子元器件、电子陶瓷、化工、医疗、食品、半导体等多个领域。

博涛公司总部位于江苏省常熟市,是一家拥有400余名员工、注册资本1.06亿元的高新技术企业。公司拥有超过200项专利,并通过了ISO9001体系认证以及欧盟CE、UL、KS、JS等多项国际认证。

公司在中国江苏、四川设有生产基地,并在韩国(研发/生产/销售)、匈牙利(研发/生产/销售)、日本(研发/销售)、新加坡设有子公司,旨在为全球客户提供卓越的产品和全方位的服务,实现合作共赢。

公司致力于满足国内快速增长的市场需求,同时将先进产品推向全球市场。

Jiangsu Botao Intelligent Thermal Technology Co., Ltd., established in 2010, is a high-tech enterprise specializing in the research, development, design, production, and sales of intelligent equipment such as sintering machine, mixer, conveyor, and dryer. The Company's main products include various industrial kilns, automatic conveyor lines, mixing conveying equipment, and drying processing equipment, and it provides a one-stop solution (EPC) from mixing to packaging.

The products are widely used in multiple fields including new energy battery materials, electronic components, electronic ceramics, chemicals, medical, food, and semiconductors.

The Company is headquartered in Changshu City, Jiangsu Province, and is a high-tech enterprise with more than 400 employees and a registered capital of CNY106 million. It holds over 200 patents and has passed ISO9001 system certification as well as multiple international certifications such as the CE, UL, KS, and JS.

The Company has production bases in Jiangsu and Sichuan Provinces domestically, and set up subsidiaries in Korea (R&D/production/sales), Hungary (R&D/production/sales), Japan (R&D/sales), and Singapore, aiming to provide excellent products and comprehensive services to global customers for mutually beneficial cooperation.

The Company is committed to meeting the needs of rapidly growing domestic market demand as well as bringing advanced products to the global market.

博涛智能热工布局 15 载 BOTAO INTELLIGENT THERMAL LAYOUT FOR 15 YEARS



中国苏州总部
SUZHOU CHINA HEADQUARTERS



中国成都子公司
CHENGDU CHINA SUBSIDIARY



韩国子公司
SUWON KOREA SUBSIDIARY



匈牙利子公司
BUDAPEST HUNGARY SUBSIDIARY



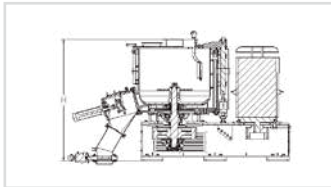
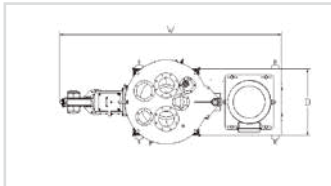
新加坡子公司
SINGAPORE SUBSIDIARY



日本子公司
OSAKA JAPAN SUBSIDIARY

混合设备 MIXING EQUIPMENT

高速混合机 SUPER MIXER



About The Equipment 关于设备

由电动机通过皮带轮直接带动主轴进行旋转, 安装在主轴上具有特殊形状的旋转叶片随之转动, 在离心力的作用下, 物料沿筒体的内表面上升, 再撞到导流板上, 处于返转运动状态, 形成一种旋流运动。参与混合的各种原料及添加剂, 由上部入料口投入, 混合后的物料由筒体的侧面卸料口排出。为适应物料的混合要求, 本设备设有夹套层, 可以对物料进行冷却、加热和保温。

The main shaft is directly driven by an electric motor through a pulley system, causing the specially-shaped rotating blades mounted on the shaft to turn. Under centrifugal force, the material moves upward along the inner surface of the cylinder and impacts the flow guide plate, entering a reverse motion state that creates a swirling flow. Various raw materials and additives are fed through the upper inlet opening, while the mixed material is discharged from the side outlet of the cylinder. To meet different mixing requirements, the equipment features a jacketed layer that enables cooling, heating, and thermal insulation of the materials during processing.

Application Field 应用领域

适用于粉体/颗粒/助剂/色粉/色母/塑料等物料的混合搅拌

Suitable for mixing and stirring of powders, particles, additives, color pigments, masterbatches, plastics and other materials

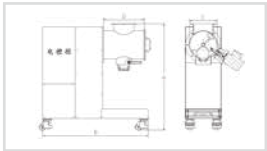
Equipment Features 设备特点

- ✓ 混合效率高
high mixing efficiency
- ✓ 规格丰富
rich specifications
- ✓ 适用范围广
wide range of applications
- ✓ 维护方便
easy maintenance
- ✓ 规格可定制
customizable specifications
- ✓ 筒体和桨叶涂层可定制
customizable cylinder and blade coatings

Equipment Parameter 设备参数

型号 Model	全容积 (L) Volume	工作容积 (L) Working Volume	电机功率 (Kw) Power	主轴转速 (Rpm) Rotational Speed Of Main Shaft	冷却水 (m³/h) Cooling Water	外形尺寸w*d*h (Mm) External Dimension	重量 (Kg) Weight
HTSM-10L	10	7	5.5	1500	0.7	1570*480*1300	150
HTSM-20L	20	14	5.5	1500	0.7	1600*480*1560	175
HTSM-30L	30	21	7.5	1500	0.7	1600*600*1500	200
HTSM-50L	50	35	9.2	1500	0.7	1600*600*1500	300
HTSM-100L	100	70	22	1100	1.2	1700*675*1500	1500
HTSM-200L	200	140	45	950	2	2100*850*1500	2000
HTSM-300L	300	210	75	750	3	2500*900*1500	2500
HTSM-500L	500	350	90	650	4	2950*910*1500	3000
HTSM-1000L	1000	600	185	750	8	3450*1600*2000	5000
HTSM-2000L	2000	1200	250	350	14	3700*1800*2500	8000

犁刀混合机
PLOUGHSHARE MIXER



About The Equipment 关于设备

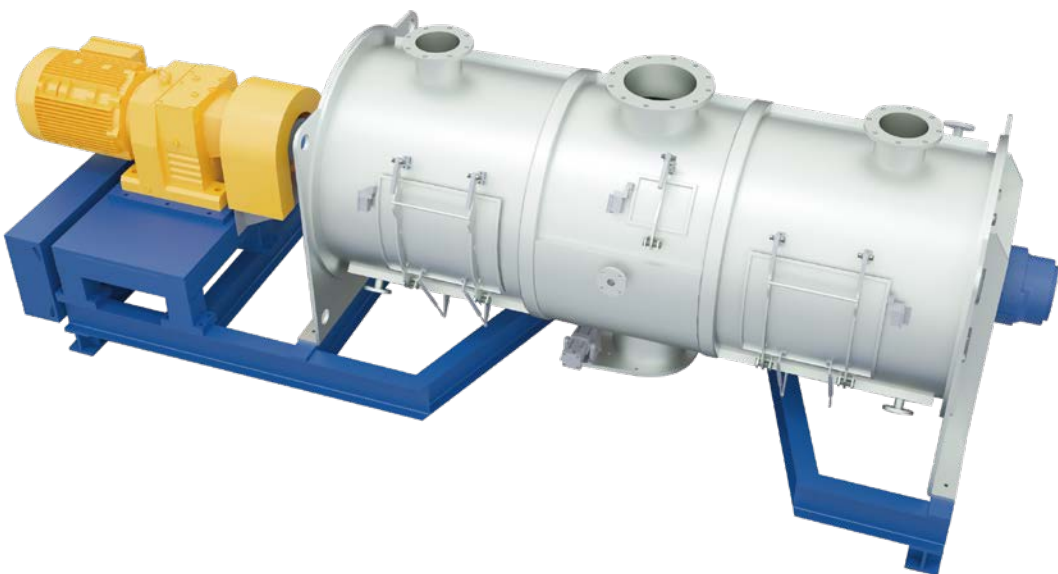
犁刀混料机为单轴式强制搅拌设备，主轴上安装有多组犁刀，且错位连续安装，运转时，犁刀使物料沸腾并行成对流循环搅拌物料。机内安装的高速飞刀对结团性物料进行打散、分离。物料受犁刀驱赶至飞刀有效范围，受飞刀高速剪切，混合物料。

Ploughshare mixer is a single-shaft compulsory mixing device, with multiple sets of plow blades installed on the main shaft, staggered and continuously installed. During operation, the plow blades make the materials boil and flow in a convection cycle. High-speed fly cutters installed inside the machine break up and separate agglomerated materials. The materials are driven by the plow blades to the effective range of the fly cutters, where it is subjected to the high-speed shearing to mix the materials.

Application Field 应用领域

锂电行业、粉体与粉体，粉体与液体的混合，也可用作反应设备。

Lithium battery industry, mixing of powder and powder, and powder and liquid. It can also be used as the reaction device



Equipment Features 设备特点

- ✓ 混合效率高
high mixing efficiency
- ✓ 混合刀具多样化
diverse mixing tools
- ✓ 筒体和桨叶涂层可定制
customizable cylinder and blade coatings
- ✓ 采用特殊密封，密封性好，无异物产生
special seals with good sealing performance, no foreign matter generation
- ✓ 维护方便
easy maintenance
- ✓ 规格可定制
customizable specifications

Equipment Parameter 设备参数

型号 Model	全容积 (L) Volume	工作容积 (L) Working Volume	电机功率 (Kw) Power	主轴转速 (Rpm) Rotational Speed Of Main Shaft	压缩空气 (m³/h) Compressed Air	外形尺寸 w*d*h (Mm) External Dimension	重量 (Kg) Weight
LIDH-30	30	18	2	300	1	1200*550*1600	200
LIDH-200	200	120	7.5	160	1.8	1650*650*1100	800
LIDH-2000	2000	1200	55	110	3.5	3700*950*1850	2000
LIDH-3000	3000	1800	75	105	5.5	5300*1250*2200	2500
LIDH-5000	5000	3000	110	95	6.8	6400*1350*2200	6000

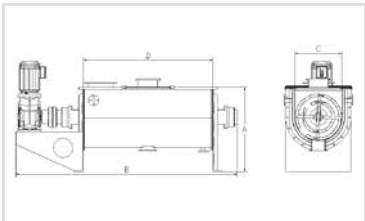
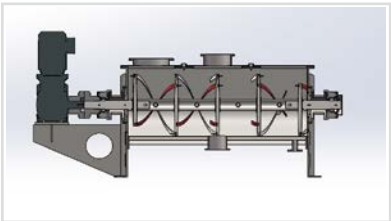
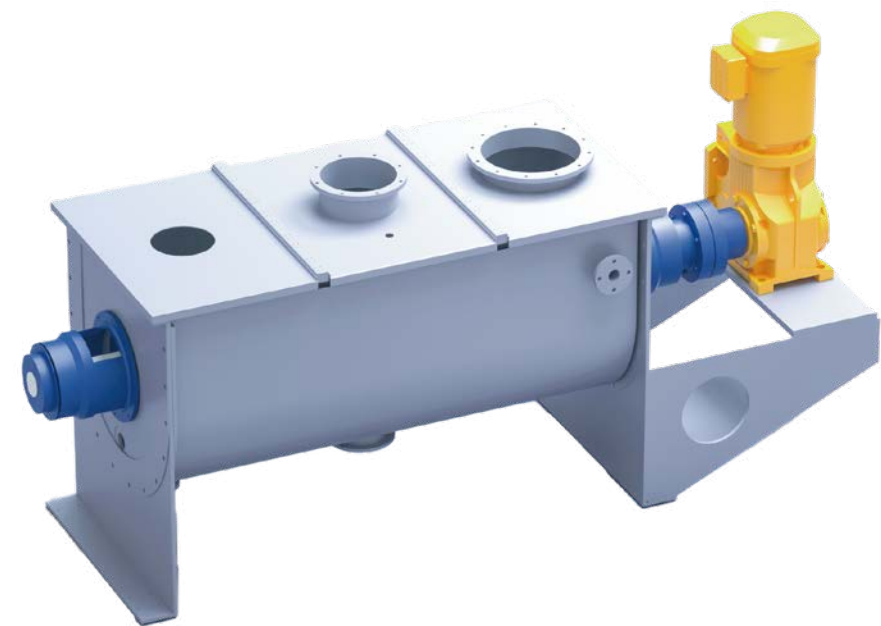
螺带混合 (冷却) 机

RIBBON (COOLING) MIXER

About The Equipment 关于设备

卧式螺带混合机由筒体、搅拌轴、驱动装置基本组成，筒体内安装双层异向螺带的搅拌轴，外螺旋带在动力的驱动下，其盘绕形式配合旋转方向把物料从筒体两端向中央推动，而内螺旋带把物料从中间向两端推动，形成对流混合。混合机卧式筒体底部中央开设出料口，外层螺旋带的螺旋结构配合主轴旋转方向驱赶筒壁内侧物料至中央出料口出料，确保筒体内物料出料无死角。

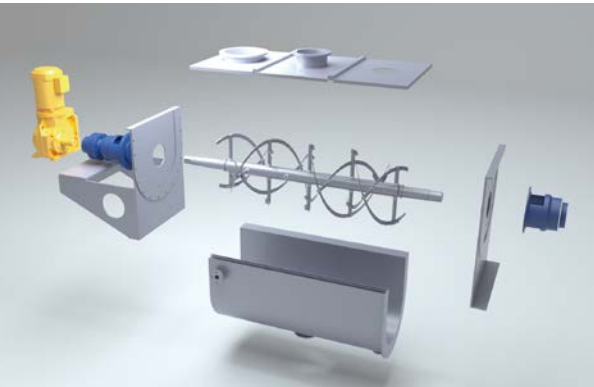
Horizontal ribbon mixer consists of a cylinder, mixing shaft, and driving device. Inside the cylinder, a double-layer, opposing-direction ribbon is mounted on the mixing shaft. Driven by power, the outer spiral band wraps and pushes materials from both ends of the cylinder towards the center, while the inner spiral band pushes materials from the center to both ends, creating a convective mixing action. The horizontal cylinder's bottom center is equipped with a discharge port, and the spiral structure of the outer spiral band, combined with the rotation direction of the main shaft, drives the material from the inner side of the cylinder wall to the central discharge port, ensuring dead-zone free in material discharge.



Application Field 应用领域

一般应用于锂电、食品、化学品、陶瓷等固-固 (即粉体与粉体) 固-液 (即粉体与液体) 的混合

Typically used for mixing solid-solid (i.e., powder-to-powder) and solid-liquid (i.e., powder-to-liquid) materials in lithium batteries, food, chemicals, ceramics and other industries



Equipment Features 设备特点

- ✓ 适用范围广
wide range of applications
- ✓ 混合过程温和
gentle mixing process
- ✓ 破碎性小
low fragmentation
- ✓ 筒体和桨叶涂层可定制
customizable cylinder and blade coatings
- ✓ 规格可定制
customizable specifications

Equipment Parameter 设备参数

型号 Model	全容积 (L) Volume	工作容积 (L) Working Volume	电机功率 (Kw) Power	主轴转速 (Rpm) Rotaional Speed Of Main Shaft	压缩空气 (m³/h) Compressed Air	外形尺寸w*d*h (Mm) External Dimension	重量 (Kg) Weight
WLDH-200	200	120	15	49	1.5	1650*650*950	500
WLDH-1000	1000	600	22	33	3	3420*1020*1850	2300
WLDH-2000	2000	1200	22	25	3	3700*1320*1950	3000
WLDH-3000	3000	1800	37	23	5	4000*1200*2400	3800
WLDH-7000	7000	4200	75	23	7	5200*1550*2700	6000
WLDH-10000	10000	7000	90	20	10	7000*2000*3000	8500
WLDH-20000	20000	14000	110	16	15	7500*2300*3900	150000
WLDH-30000	30000	21000	132	10	15	7500*2750*4250	200000

干燥设备 DRYING EQUIPMENT

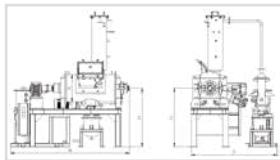
真空卧式干燥机

VACUUM COULTER DRYER



Equipment Features 设备特点

- ✓ 采用大面积夹层加热方式
Large-area Jacket Heating Method
- ✓ 热效率高
High Thermal Efficiency
- ✓ 传热面大
Large Heat Transfer Surface
- ✓ 规格可定制
Customizable Specifications
- ✓ 筒体和桨叶涂层可定制
Customizable Cylinder And Blade Coatings



About The Equipment 关于设备

本机是一种新颖卧式间歇式真空干燥设备。混合启动后，犁刀围绕犁刀主轴转动，带动湿物料沿筒体作周向运动，同时把湿物料沿犁刀两侧面的法线方向分散，物料在犁刀和飞刀的作用下，不停对流，翻动，扩散，同时筒体夹层内导入导热油，对腔体进行加热，然后湿物料进行干燥处理，物料在犁刀和飞刀作用下可以均匀受热，并在筒内推移形成循环流，物料内含有的水分经过受热变成水蒸气后，由设备自带的抽真空系统抽出，如此往复达到快速干燥物料的目的。

This machine is a novel horizontal intermittent vacuum drying equipment. After mixing starts, the plow blade rotates around the main shaft, driving the wet material to move circumferentially along the cylinder, while dispersing the wet material along the normal direction of both sides of the plow blade. Under the action of the plow blade and fly cutter, the material continuously convects, turns, and spreads, while heat transfer oil is introduced into the jacket of the cylinder to heat the chamber, then the wet material is dried. The material is uniformly heated under the action of the plow blade and fly cutters and moves inside the cylinder to form a circulating flow. The moisture contained in the material turns into steam upon heating and is extracted by the machine's built-in vacuum system, repeating the process to rapidly dry the materials.

Application Field 应用领域

锂电、化工、橡塑、食品等需要对物料进行进一步加工的场景

Lithium battery, chemical, rubber and plastics, food, and other scenarios requiring further processing of materials

Equipment Parameter 设备参数

型号 Model	全容积 (L) Volume	工作容积 (L) Working Volume	电机功率 (Kw) Power	主轴转速 (Rpm) Rotaional Speed Of Main Shaft	外形尺寸w*d*h (Mm) External Dimension	重量 (Kg) Weight
VDW-200	200	120	1.5	29	2730*1400*1230	2000
VDW-500	500	300	2.2	32	3120*1630*1460	2500
VDW-1000	1000	600	4	30	3820*1800*1630	3000
VDW-2000	2000	1200	7.5	31	4780*2010*2030	4500
VDW-3000	3000	1800	11	30	4980*2010*2030	6000
VDW-5000	5000	3000	18.5	31	6230*2250*2270	8000
VDW-6000	6000	3600	22	30	6230*2250*2510	9000
VDW-9000	9000	5400	45	32	6530*2540*2640	11000
VDW-12000	12000	7200	75	33	6630*2860*2890	13000

真空釜式干燥机

VACUUM KETTLE DRYER

About The Equipment 关于设备

被干燥物料从进料口进入,在不断转动的耙齿的搅拌下,物料与筒体壁接触时,物料表面更新,被干燥物料不断受到导热油的间接加热,而使物料水分气化,气化的水分由真空泵通过过滤器及时抽走。由于筒内真空度较高,被干燥物料表面的水蒸汽压力远大于壳体导热油空间的压力,从而有利于被干燥物料内部水分和表面水分的排出,有利于被干燥物料的水分子运动,达到干燥的目的。

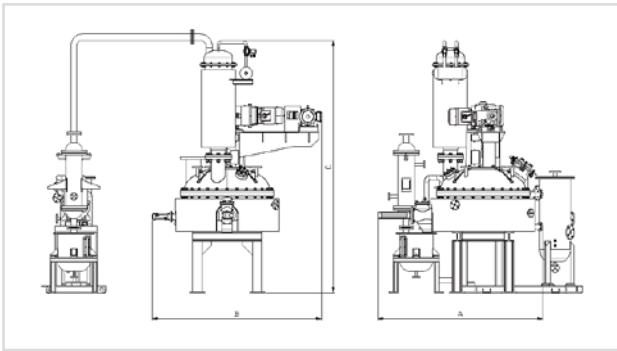
Dried materials enter through the inlet and are stirred by continuously rotating rake teeth. When the materials contact the cylinder wall, the surface of the materials is renewed. The dried materials are continuously indirectly heated by heat transfer oil, vaporizing the moisture. The vaporized moisture is promptly drawn off by a vacuum pump through a filter. Due to the high vacuum inside the cylinder, the steam pressure on the surface of the dried materials is significantly higher than the pressure in the space with heat transfer oil in the shell, facilitating the discharge of internal and surface moisture of the dried materials and promoting the movement of water molecules in the materials to achieve the purpose of drying.



Application Field 应用领域

锂电、化工、橡塑、食品等需要对物料进行进一步加工的场景

Lithium battery, chemical, rubber and plastics, food, and other scenarios requiring further processing of materials



Equipment Features 设备特点

- ✓ 空间占有率低
low Space Occupancy
- ✓ 处理时间短
short processing time
- ✓ 规格可定制
customizable specifications
- ✓ 筒体和桨叶涂层可定制
customizable cylinder and blade coatings
- ✓ 单位体积传热面积大,干燥速度快
large heat transfer area per unit volume,fast drying speed
- ✓ 主轴转速低,需要功率小,耗电少,能耗低
low main shaft speed requiring less power, low power consumption, and low energy consumption
- ✓ 主轴低速匀速旋转,物料得到均匀搅拌,干燥力度均匀,对物料表面的磨损较小
main shaft rotating at low and even speed, providing uniform mixing and drying, minimal wear on material surface
- ✓ 处理物料范围广:对于含水率高低的物料均可干燥,可连续操作,也可间隙操作
wide material processing range: suitable for drying materials with high and low water content, capable of continuous or intermittent operation

Equipment Parameter 设备参数

型号 Model	全容积 (L) Volume	工作容积 (L) Working Volume	夹套容积 (L) Volume Of Jacket	电机功率 (Kw) Power	干燥转速 (Rpm) Rotaional Speed Of Main Shaft	出料转速 (Rpm) Rotaional Speed Of Main Shaft	进料口径 Feed Port	出料口径 Discharge Port	外形尺寸w*d*h(Mm) External Dimension	重量 (Kg) Weight
VKD-200	200	120	50	1.1+1.5	0.1-0.9	1-10	DN150	DN150	1650*1830*2650	2.5
VKD-1000	1000	400	100	3+4	0.1-0.9	1-10	DN200	DN200	2200*2440*3300	6.5
VKD-2000	2000	900	160	4+5.5	0.1-0.9	1-10	DN200	DN250	2750*3050*4000	8
VKD-3000	3000	1600	250	7.5+7.5	0.1-0.9	1-10	DN250	DN250	3300*3300*4200	12
VKD-5000	5000	2500	450	11+11	0.1-0.7	1-7	DN250	DN300	4070*3250*3700	15
VKD-7000	7000	3500	550	15+15	0.1-0.7	1-7	DN250	DN300	4200*3250*3900	16

粉体干燥设备 POWDER DRYING EQUIPMENT

喷雾干燥

SPRAY DRYING

About The Equipment 关于设备

将液态物料雾化成微小液滴，与热空气接触后瞬间干燥成粉。

Atomize the liquid material into tiny droplets, which will be instantaneously dried into powder upon contact with hot air.

Equipment Features 设备特点

✓ 连续化生产，颗粒均匀，但设备投资大。

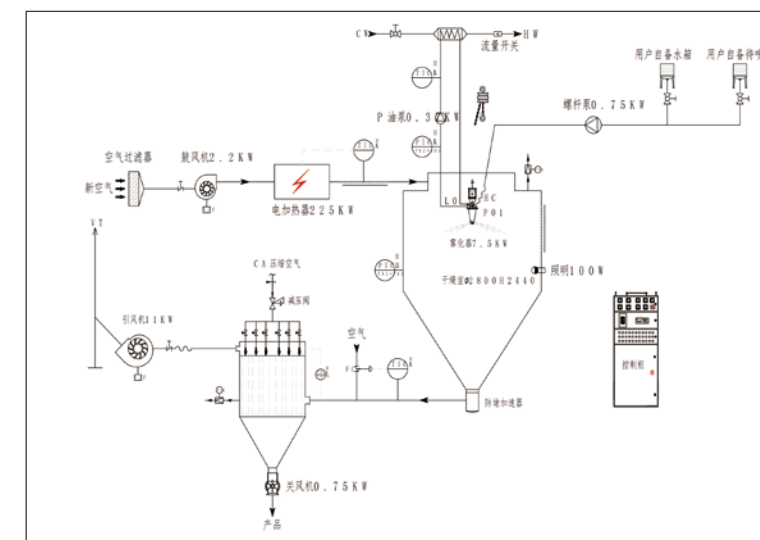
It enables continuous production, resulting in uniform particles. However, it requires a large investment in equipment.



Application Field 应用领域

适用于电池材料、速溶咖啡、奶粉、中药粉体等

It is suitable for battery materials, instant coffee, milk powder, traditional Chinese medicine powders, etc.



闪蒸干燥

FLASH DRYING

About The Equipment 关于设备

通过快速分散物料并利用高温气流实现水分瞬时蒸发。

Disperse the materials rapidly and achieve the instantaneous evaporation of moisture by utilizing high-temperature airflow.



Application Field 应用领域

适用于电池材料, 化工 (颜料、染料、催化剂), 环保 (污泥、废渣)

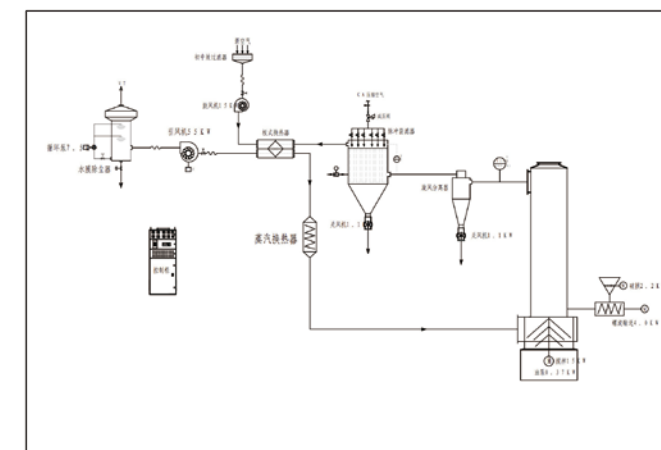
It is applicable to battery materials, the chemical industry (pigments, dyes, catalysts), and environmental protection (sludge, waste residues).



Equipment Features 设备特点

可处理粘性、膏状物料 (如污泥、滤饼), 初始含水率可达80%以上

It can handle viscous and pasty materials (such as sludge and filter cakes), and the initial moisture content can reach over 80%.



流化床干燥

FLUIDIZED BED DRYING



About The Equipment 关于设备

通过气流使粉体悬浮并形成流态化状态, 增强传热传质效率。

Make the powder suspended by the airflow and form a fluidized state to enhance the heat and mass transfer efficiency.



Application Field 应用领域

适用于颗粒状药品、化肥、饲料添加剂

It is suitable for granular pharmaceuticals, chemical fertilizers, and feed additives.

Equipment Features 设备特点

干燥速度快, 适合颗粒较大的物料。

It has a fast drying speed and is suitable for materials with relatively large particles.

Equipment characteristics 设备特性

1、床体: 容纳物料和气流的主要容器。

Bed body: The main container that holds the materials and the airflow.

2、分布板: 底部带孔或多孔材质的板, 确保气流均匀分布。

Distribution plate: A plate made of perforated or multi-porous material at the bottom to ensure the uniform distribution of the airflow.

3、进风系统: 加热器、风机, 提供可控温度和流速的热风。

Air inlet system: Comprising heaters and fans, it provides hot air with controllable temperature and flow rate.

4、气固分离系统: 旋风分离器、布袋除尘器等, 回收细小颗粒。

Gas-solid separation system: Including cyclone separators, bag dust collectors, etc., it recovers fine particles.

5、控制系: 调节温度、风速、停留时间等参数。

Control system: It adjusts parameters such as temperature, wind speed, residence time, etc.



技术支持与服务

TECHNICAL SUPPORT AND SERVICES



在线服务
快速反应
Online services
Rapid response



现场勘查
专业放心
Site Inspection
Professional and rest assured



原厂配件
品质保证
Original spare parts
Quality assurance



升级改造
降本增效
Upgrading and reconstruction
Cost decreasing and efficacy increasing

博涛采用数字化、智能化的管理模式, 以完善的技术支持与专业项目服务团队为后盾, 助力客户“提高产量, 提升品质, 降低排放污染和能耗”。

Botao adopts the digital and intelligent management mode backed by the complete technical support and professional project service team, so as to help customers "increase production yield, improve quality, reduce emissions, pollution and energy consumption".

博涛热工24小时在线售后服务

BOTAO 24-HOUR ONLINE AFTER-SALES SERVICES