



# Window & Door Hardware Range Overview





INTRODUCING...

# AL DESIGNNO

CONCEALED HARDWARE FOR AESTHETIC ALUMINIUM  
WINDOWS AND BALCONY DOORS



Fully concealed hardware  
for aluminium windows and doors

Cost-effective modular system

Sash weights up to 150 kg

DISCOVER MORE AT [TITON.COM/ROTO](https://www.titon.com/roto)



## Titon's specialist team offers:

- Free expert advice and technical support
- Time-saving ordering and rod calculation software



SCAN FOR  
MORE INFO

01206 713801

[sales@titon.co.uk](mailto:sales@titon.co.uk)

[titon.com/uk](https://www.titon.com/uk)

# Testing & Quality Control

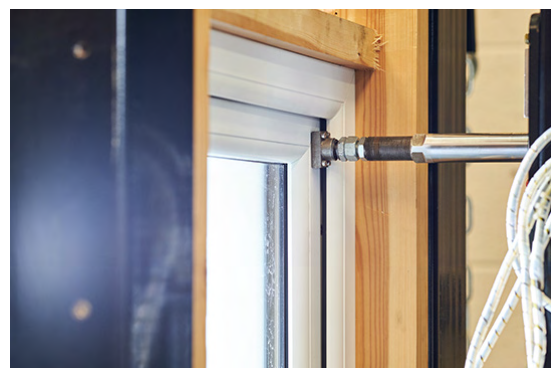
In the competitive world of manufacturing, ensuring the highest quality of products is paramount.

One of the key pillars of our quality assurance process is the rigorous testing that all products undergo before reaching our customers.

At the heart of this testing process lies 'AREA24,' a state-of-the-art testing and quality control facility based at our factory in Haverhill, Suffolk.

AREA24's stringent testing ensures the quality of bought-in products which Titon can confidently pass on reliable products and components to its suppliers and ultimately to its customers.

This commitment to quality maintains Titon's sterling reputation for delivering products that enhance comfort, safety, and at a competitive price.



[titon.com/uk/area24](http://titon.com/uk/area24)

DESIGNED AND  
TESTED IN THE **UK**

# AREA 24

**AREA24** is Titon's extensive hi-tech product development laboratory. We conduct indicative testing to certified levels so that system companies and fabricators can ensure a hardware specification complies with Standards before going through the expensive third party official testing.

01206 713801

[sales@titon.co.uk](mailto:sales@titon.co.uk)

[titon.com/uk](http://titon.com/uk)

# New Products

## Roto AL Designo Tilt & Turn

### Tilt Turn System

Roto AL Designo is the elegant fully concealed hardware for aluminium windows and balcony doors up to 180kg sash weight.

It meets the most stringent demands of planners and architects with regard to perfect appearance, functionality and ease of fabrication.

- Tilt before Turn Gear
- Tilt Only and Turn Only options available
- Minimalist appearance
- No need to colour match hinges
- Minimal preparation required
- Clampable frame components for quick assembly
- Only five rods per window irrespective of size

### Available only from Titon:

- Free expert advice and technical support available
- Ordering and rod calculation software available
- Part numbered packaging for ease of identification
- Ten year manufacturer's warranty



## Roto Line

### Tilt First Lockable Window Handle

The Roto Line Tilt First Lockable Window Handle uses RAL-tested advanced technology which offers durable functionality. Combined with high-quality aluminium elements, the elegant design with elegant clear lines ensures comfortable handle operation.

The Roto Line Tilt First handle range suites perfectly with the Roto AL Designo hardware system and other window systems with the Tilt First application (tilt before turn).

- Tilt First locking handle
- Multi-function key operation including 'Tilt-Safe' function
- Tilt mode accessible when unlocked
- 'Safe' two stage operation to access turn mode with key
- Can be fully locked in 0 degree position
- 43mm fixing centres / 24mm spindle length
- Suites with the Roto AL Designo hardware system
- Ten-year performance warranty
- Classification in accordance with DIN EN 13126-3



# New Products

## Hexalok™

### High security multi point lock for sliding doors

Titon's new multi-point lock boasts a centre hook bolt and FIVE additional mushroom cams providing extra secure locking and prevents lifting of the sliding doors. It also has unique Torx adjustment to security cams for increased cam strength.

Hexalok™ is available in two versions for optimum cam positioning: Version A (Long) – locking cams spread further apart, and Version B (Short) – cam positions are more closely spaced.

The removable lockcase with its stainless steel gear simplifies maintenance.

Hexalok™ is supplied with standard cams, security cams (1mm less clearance) and 2mm spacers for increased cam height.



DESIGNED AND TESTED IN THE **UK**

## Terminus™

### Espagnolette

- High quality robust security espagnolette
- Single direction of travel – stronger than bi-parting espagnolettes
- Size range 205mm to 1400mm (1600mm Sash rebate)
- Salt spray tested to 480 Hrs BS EN 1670 (Grade 5)
- Stainless Steel gear for greater strength and durability
- PAS24 Compliant
- Non-handed espagnolette



DESIGNED AND TESTED IN THE **UK**

DESIGNED AND TESTED IN THE **UK**

**Titon**®

Exceptionally strong, high security **SIX** point multi-point lock for inline sliding doors

# HEXALOK™

- Available in two versions for optimum cam positioning
- Stainless Steel Drive Gears, Racks, Face Bar, Hook & Cams
- 2350mm Lock and 2400mm Keep length
- Highest Grade Corrosion Resistance BS EN 1670 (Grade 5)
- Tested beyond 50,000 cycles
- Supplied with 2x sets of cams (standard and high security)
- Height extendable cams



01206 713801  
sales@titon.co.uk

[titon.com/hexalok](https://titon.com/hexalok)

01206 713801

sales@titon.co.uk

titon.com/uk

# Window Hardware

## Overture E

### Espagnolette handle

- Ergonomic design; solid and sculptured grip
- Straight or handed versions
- Non-locking and fire escape retrofit options
- 90 degree lock movement for easy recognition
- Double entry key
- Push-in screw covers
- Supplied with machine screws
- 15mm, 25mm, 30mm or 40mm x 7mm spindle options available



## Venture

### Friction hinge

- Suitable for domestic and light commercial applications
- Fully dimensioned technical sheet available for each hinge
- Adjustable and controlled friction for smooth operation
- Standard and High Stack heights
- Austenitic stainless steel version available for high corrosion resistance
- Egress Easy-Clean version
- Additional arm available



## Adventure

### Heavy duty friction hinge

- Suitable for larger, heavier sashes or commercial applications
- Fully dimensioned technical sheet available for each hinge
- Adjustable and controlled friction for smooth operation
- 16mm stack height
- Made from austenitic stainless steel for high corrosion resistance
- Additional arm available



## Capture

### Window safety restrictor

- Automatically engages
- Easy to fit
- No key or tools required to de-restrict
- Three length variations available (66mm/110mm/140mm)
- Various pin heights
- Suits most cavity sizes
- Can be retrofitted
- Austenitic stainless steel for improved



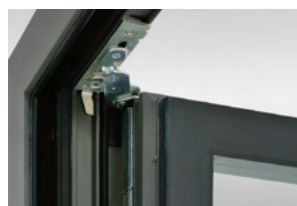
# Window Hardware

## Roto AL Designo Tilt & Turn

### Tilt Turn System

Roto AL Designo is the elegant fully concealed hardware for aluminium windows and balcony doors up to 180kg sash weight.

- Tilt before Turn Gear
- Tilt Only and Turn Only options available
- Minimalist appearance
- No need to colour match hinges
- Minimal preparation required
- Clampable frame components for quick assembly
- Only five rods per window irrespective of size



## Maco Multipoint Locks

### Espagnolette

A wide variety of open-out casement window solutions enabling a vast range of window styles to be manufactured with multi point locking. MACO espagnolettes impress with their PAS 24 security performance, ease of use in operation and efficient installation.



## Flex

### Window safety restrictor

- Fits all window types
- Push to release
- Key operated deadlock
- Highly visible
- Special lengths and colours to order
- Retro fit (surface mounted)
- Tested to 1200N with no failure



## Roto Line

### Tilt First Lockable Window Handle

- Tilt First locking handle
- Multi-function key operation including 'Tilt-Safe' function
- Tilt mode accessible when unlocked
- 'Safe' two stage operation to access turn mode with key
- Can be fully locked in 0 degree position
- 43mm fixing centres / 24mm spindle length
- Suites with the Roto AL Designo hardware system



# Door Hardware

## Overture DH

### Lever door handle range

- Tested to over 100,000 cycles
- In excess of 480 hours salt spray testing (Polished chrome, PVD gold and powder painted finishes only)
- Short (211.5mm) and long (240mm) baseplate options
- Sprung handles
- Supplied with two spindle lengths and two screw lengths as standard
- Colour coordinated screw heads



## Overture DH Stainless Steel

### Stainless steel lever door handle range

- Tested to over 100,000 cycles
- Both internal and external handles and screws are manufactured in SS304 stainless steel
- Polished and brushed finishes
- All finishes tested in excess of 480 hours salt spray testing - Grade 5 BS EN 1670
- Exceeds 1000 hours salt spray testing with no effect on function and no corrosion to the visible substrate
- Long (240mm) baseplate
- Colour coordinated screw heads



## Asterion II - 3 Star Cylinder

### Profile cylinder

- Kitemarked to TS007 3-Star rating
  - Designed to attain PAS 24 with standard handles
  - Tested to BS EN 1303:2015
  - Reduced vulnerability of door lock manipulation
  - Strengthened support to sacrificial slot adding stability during fabrication and transit
  - Supplied with five keys as standard
  - Satin Nickel or Satin Brass finish
- Available options:
    - Double cylinder
    - Cylinder and turn
    - Keyed alike
    - Special key alike variants
  - Upgraded locking pin material improving attack resistance
  - Benefit of a reset mechanism reducing chances of lock-outs
  - New cam restraining feature reducing the risk of separation during an attack



## Genesis

### Intermediate locking handle for Bi-Fold doors

- No visible screws in the closed or open positions
- Side entry lock mechanism avoids key damage to door
- Fixing screws and spindle included
- A range of standard colours/finishes
- Special colours/finishes possible





# Door Hardware

## Hexalok™

### High security multi point lock for sliding doors

Titon's new multi-point lock boasts a centre hook bolt and FIVE additional mushroom cams providing extra secure locking and prevents lifting of the sliding doors. It also has unique Torx adjustment to security cams for increased cam strength.

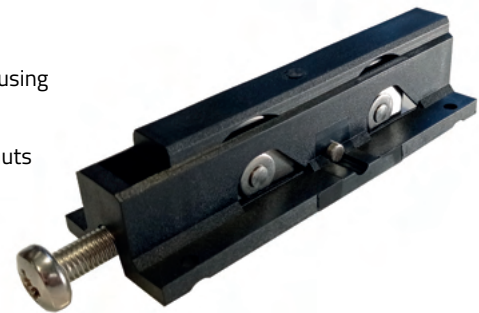
- Available in two versions for optimum cam positioning
- Stainless Steel Drive Gears, Racks, Face Bar, Hook & Cams
- 2350mm Lock & 2400mm Keep length
- Highest Grade Corrosion Resistance BS EN 1670 (Grade 5)
- Tested beyond 50,000 cycles
- Supplied with 2x sets of cams (standard and high security)
- Height extendable cams
- Slotted fixing holes in lockcase allow flexibility of choice of handles
- Central alignment mark on faceplate and keep



## Roller for Horizontal Sliding Doors

### Sliding door accessories

- Tested to BS EN 1191:2012
- Passed 7600 cycles (equivalent to 21 years of usage)
- Ball bearings in lieu of needle bearings reduce roller noise and enhance smooth effortless operation
- 31mm diameter stainless steel wheels
- 8mm diameter stainless steel axles
- 2mm thick stainless steel internal carriage frame
- Re-enforced moulded plastic carrier housing
- Height adjustment of 5mm
- Non-adjustment version available (no nuts and bolts)
- Robust design
- Easy to fit into door profile
- New 4-wheel version available

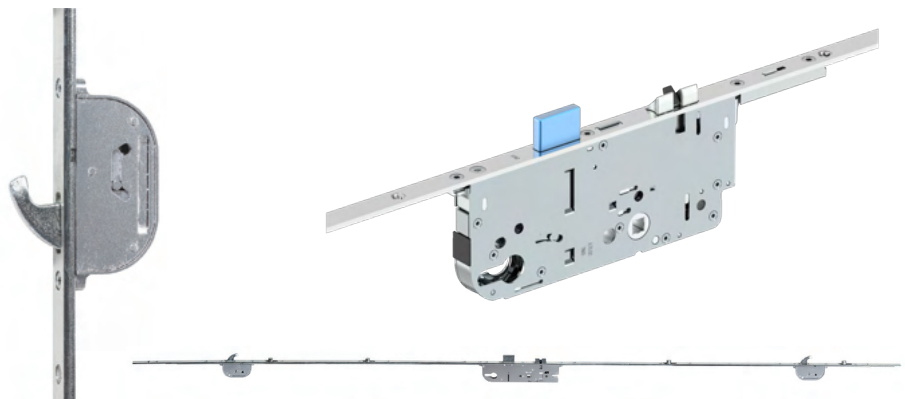


## Maco Door Locks

### Multipoint security locking systems

The Maco door locks range makes forced entry a difficult job thanks to their special features, which include i.S. security roller cams, steel bolts, locking hooks and a hook & bolt combination.

Various security components, such as the hook&bolt combination, can be used up to burglary-resistance grade PAS24.



## Kenrick Door Locks

### Multipoint security locking systems

The Kenrick range of multipoint door lock systems are designed to meet the most rigorous standards for security.

The locking systems feature three hooks and two steel anti lift bolts as standard.



# Trickle Vents

## SF Xtra Sound Attenuator Vent

### Surface mounted noise reducing ventilator

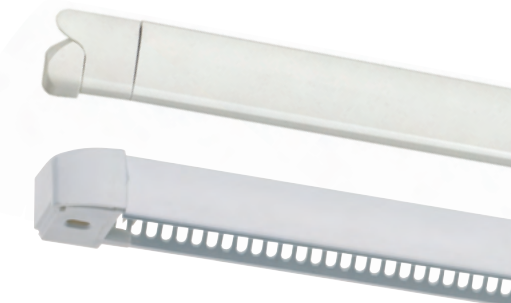
- Cost effective sound attenuating ventilator
- Can provide up to 44  $D_{n,e,w}$  attenuation, depending on combination
- Suitable for use in domestic or non-domestic installations
- Ideal for retrofit applications, over an existing slot
- Available in a range of combinations to suit different acoustic specifications
- Fits over a Trimvent® Select, Trimvent® 4000 Hi Lift or Trimvent® Select Xtra slot size
- High performance gasket combined with compression closing action improves sealing in adverse conditions
- For use over a 13mm slot
- Special paint finishes available



## SF Xtra

### High performance aluminium ventilator

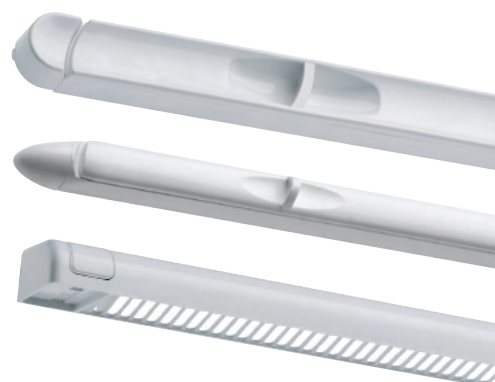
- Simple construction to aid painting, self-assembly & fitting
- Gasket combines with compression closing action improves sealing in adverse conditions
- Available in competitively sized EA rated combinations for optimum compliance with Building Regulations and Technical Standards on Ventilation
- For use over a 13 or 16mm slot
- Ideal for retrofit applications, over a slot or series of holes
- Ideal for use in non-domestic installations
- Available in bar length
- Bar length product available ready painted for assembly or in mill finish for customer painting
- Special paint finishes available



## Trimvent Select Xtra (XS13/XS16/XR16)

### Plastic slot ventilators

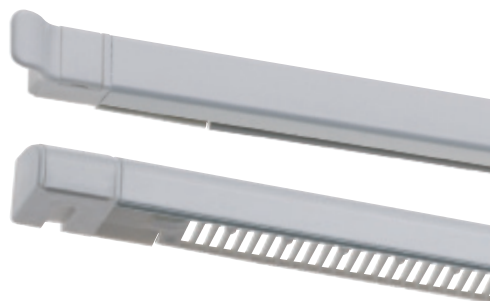
- Suitable for PVCu, timber or aluminium windows - (XR16 timber only)
- Available in competitively sized EA rated combinations for optimum compliance with Building Regulations and Technical Standards on Ventilation
- For use over 13 or 15mm slot (XR16 recesses over 16mm slot in timber)
- Unique occupant controllable tilting T-bar
- For use over 13mm slot - (XR16 recesses over 16mm slot)
- Based on successful Trimvent® principle
- Screw fix or clip fix versions (S13/XS13)
- Patented and registered design



## Trimvent SM

### Aluminium slot ventilator

- For use on aluminium windows with narrow profiles
- Compression closing action
- For use over 10mm or 12mm slot, ideal for slim sections
- Flexible PVCu seal for improved weather tightness
- Ideal for retrofit applications
- Available in bar length for cutting to size by customer (details on request)
- Special paint finishes available
- Based on successful Trimvent® principle
- Deflects air up and down
- Thermally insulated
- Matching screw covers
- Patented design

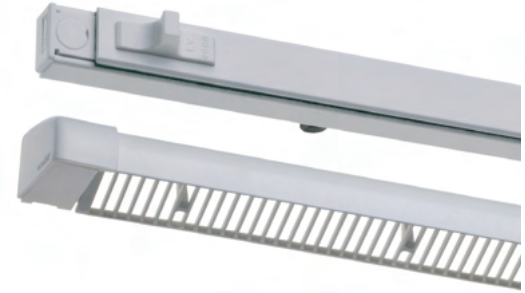


# Trickle Vents

## Trimvent 4000 Hi Lift

### Aluminium slot ventilator

- Revised design to improve performance and Regulations compliance
- Compression closing action
- For use on 13mm slot
- Based on successful Trimvent® principle
- T-bar deflects air up and down
- Unique linkages ensure constant friction and smooth action
- Felted gasket for increased performance
- Vent supplied with screw covers, canopy features integral screw covers
- Special colours available on request for all trickle vents
- When specified correctly complies with Building Regulations



## Maxiglaze

### Energy efficient glazed-in ventilator

- Optimum air opening over length
- Supplied made-to-measure or in bar length
- Designed for easy cutting and assembly from bar length
- Suitable for 24 or 28mm glass thicknesses
- Available in mill finish bar length for customer painting (24mm version only)
- Aluminium or (white) plastic canopy
- Dual colour (inner and outer) finish available
- Cord and rod control versions
- Patented design



# SF Xtra Sound Attenuator

*Sounds like a good choice...*

### Ventilation with noise reduction:

- Attenuates up to 44dB (Dn,e,w (C;Ctr) = 44 (-2;-3)dB)
- Independently tested and verified by BRE and Sound Research Laboratories Ltd
- Available in 2500mm<sup>2</sup> EA and 5000mm<sup>2</sup> EA unit sizes
- Standard and special (RAL match) paint finishes
- Can be used on standard Titon slot sizes

 Titon®

TITON.COM/ACOUSTIC



01206 713801

sales@titon.co.uk

titon.com/uk

# Trickle vents

## Plastic Vents

### Trimvent® Select Xtra S13/S16

Product 13mm - 16mm Slot Width	Product Code	(L) Length	(W) Width	(P) Projection Closed-Open	EA (mm <sup>2</sup> )	Slot Detail
XS13 2000/2500EA Vent Screw Fix					200/2500	
XC13 Canopy Screw Fix						
XS13 4400EA Vent Screw Fix	TS1134470	411	18.5 - 30	20 - 27	4400	173.5 20 173.5 13
XC13 412 Canopy Screw Fix	TS2134040	411	18	32.5		
XS13 5000EA Vent Screw Fix	TS1135070	497	18.5 - 30	20 - 27	5000	215 20 215 13
XC13 497 Canopy Screw Fix	TS2135040	497	18	32.5		
XS16 4600EA Vent	TS1164670	366	21 - 31	16 - 28	4600	151 10 151 16
XC16 364 Canopy	TS2164040	364	22	32.5		

## Metal Vents

### SF Xtra Vent

Product 13mm - 16mm Slot Width	Product Code	(L) Length	(W) Width	(P) Projection Closed-Open	EA (mm <sup>2</sup> )	Slot Detail
SFX 13 2500EA Vent 294mm	TA7831	294	23	10 - 24	2500	223 13
SF 318 Canopy	TA5010	318	23	27		
SFX 13 2500EA Vent 294mm	TA7831	294	23	10 - 24	2500	223 13
XC13 Canopy (plastic)	TS2132040	270	18	32.5		
SFX 13 4000EA Vent 434mm	TA7833	434	23	10 - 24	4000	178.5 10 178.5 13
SF418 Canopy	TA5005	418	23	27		
SFX 13 4000EA Vent 434mm	TA7833	434	23	10 - 24	4000	173.5 20 173.5 13
XC13 412 Canopy (plastic)	TS2134040	411	18	32.5		
SFX 13 5000EA Vent 465mm	TA7838	465	23	10 - 24	5000	185 10 185 13
HF441 Canopy	TA6054	441	24	36.5		
SFX 13 5000EA Vent 465mm	TA7838	465	23	10 - 24	5000	198 10 198 13
SFX418 Plastic Clip Fix Canopy	TA7841	418	18	36.5		
SFX 16 4000EA Vent 374mm	TA7861	374	27	10 - 27.5	4000	151 10 151 16
HF404 Canopy	TA6059	404	24	6.5		
SFX 16 4000EA Vent 374mm	TA7861	374	27	10 - 27.5	4000	151 10 151 16
XC16 364 Canopy (plastic)	TS2164040	364	22	32.5		

## TV4000 Hi Lift

Product	Product Code	(L) Length	(W) Width	(P) Projection Closed-Open	EA (mm <sup>2</sup> )	Slot Detail
TV4000 HL 2200EA 255 Vent	TA4042	255	17	28 - 38	2200	223 13
HF 263 Canopy	TA6053	263	24	36.5		
TV4000 HL 4000EA 400 Vent	TA4041	400	17	28 - 38	4000	173.5 20 173.5 13
HF 441 Canopy	TA6054	441	24	36.5		
TV4000 HL 6000EA 575 Vent	TA4044	575	17	28 - 38	6000	173 12 173 12 173 13
HF 582 Canopy	TA6004	582	24	36.5		

## Acoustic Vents

### SF Xtra Sound Attenuator

Available in three inner and outer projection combinations, 25mm, 50mm and 75mm. A standard vent and canopy can also be used on inner or outer if higher performance according to attenuation spec.

Product	Product Code	(L) Length	(W) Width	(P) Projection Closed-Open	EA (mm <sup>2</sup> )	Slot Detail
SF Xtra Sound Attenuator 2500EA Vent 25mm	TA5221	464	35	37-51	3470	173.5 20 173.5 13
SF Xtra Sound Attenuator 4000EA Vent 75mm						
SF Xtra Sound Attenuator 5000EA Vent 75mm	TA5235	523	35	87-101	5517	215 8 215 13