



# **ONation Corporation Company Profile**

**2025 2<sup>nd</sup> Half**

# Company Profile

## Corporate Summary

**Company Name:** ONation Corporation  
**Established:** April 21, 2006  
**Founder:** Shizuo Ishitani  
**President:** Peter Huang  
**Head-Quarter:** Taiwan, Kaohsiung

## Management & Quality System

ISO 9001



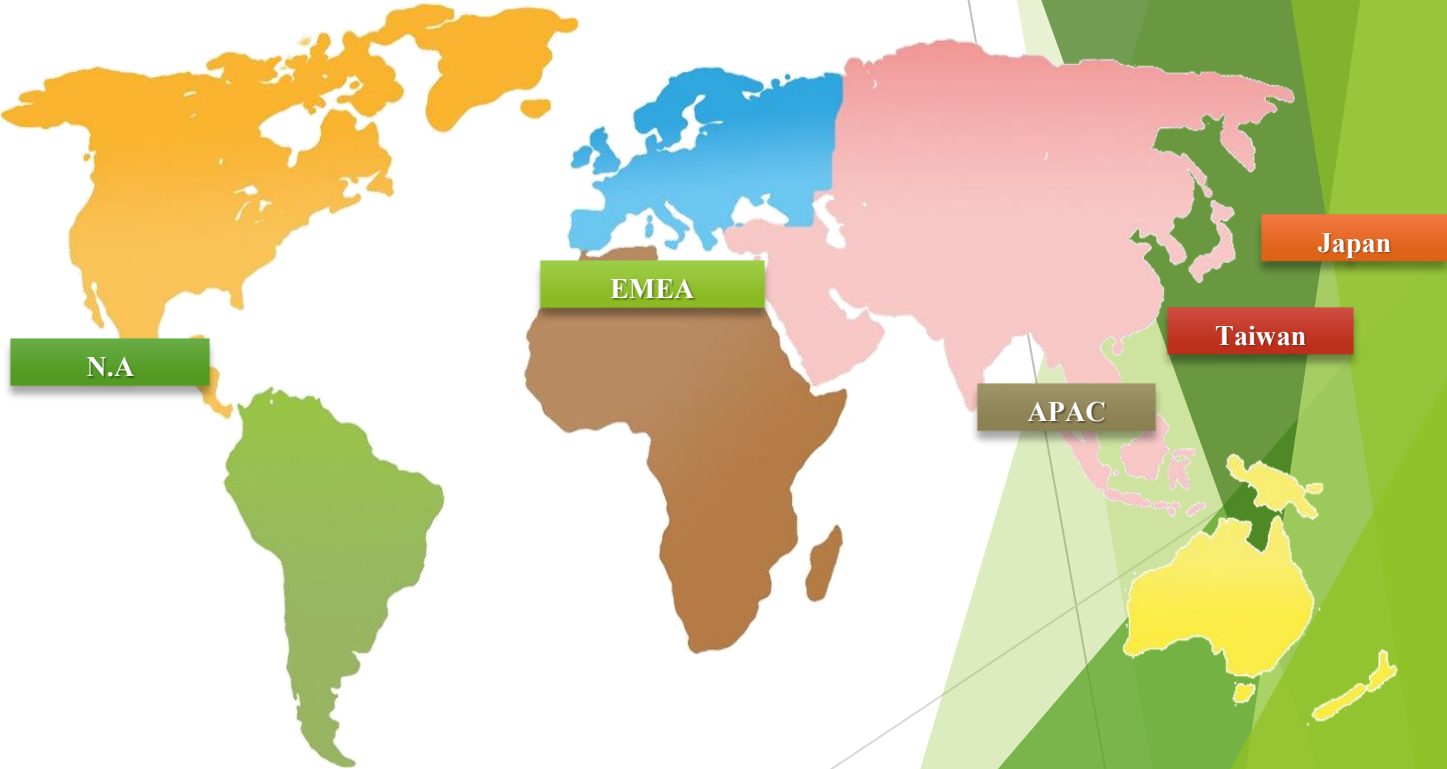
ISO 14001



ISO 13485



## >> Global Sales Region



# Core Service

## TFT Product Features

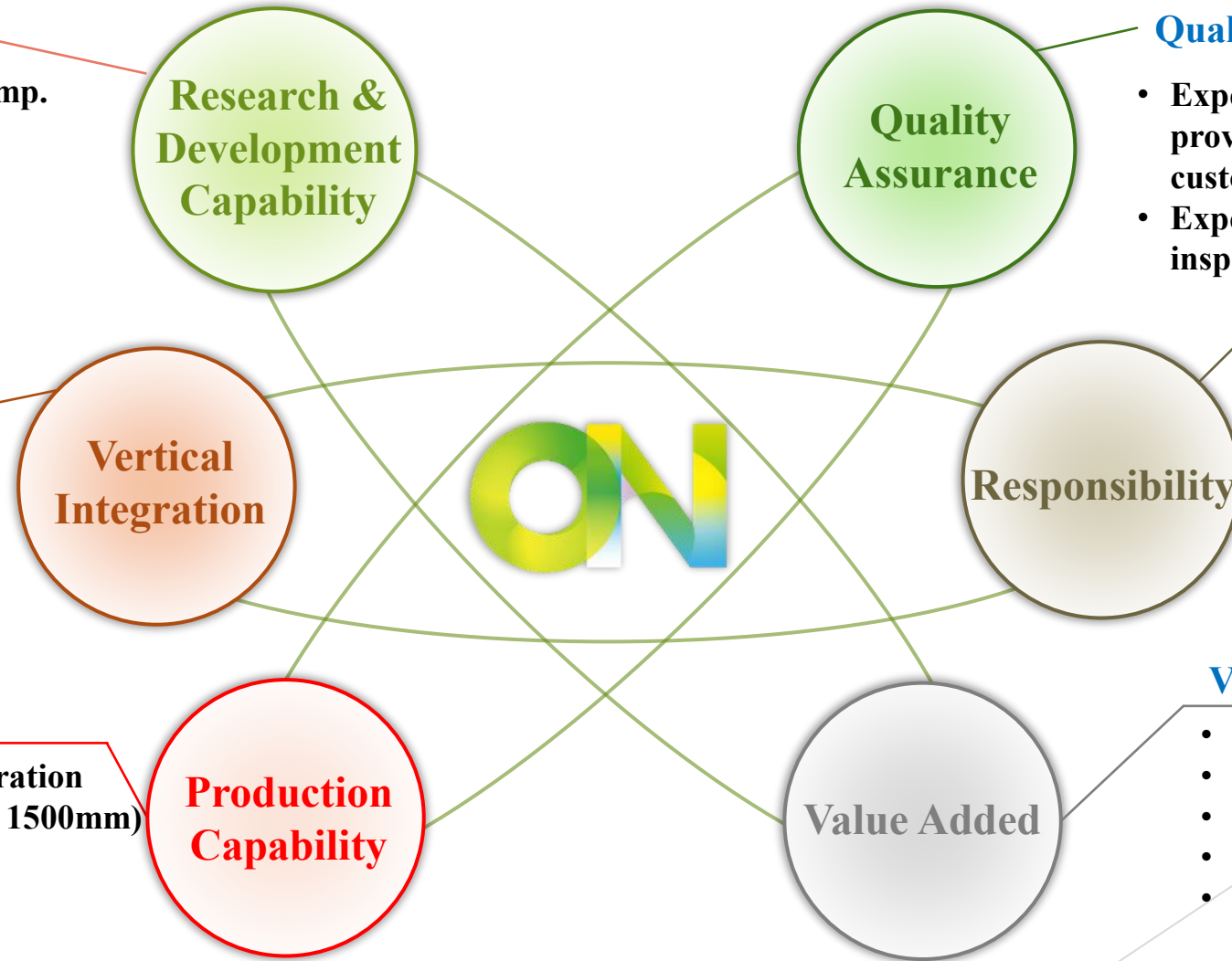
- High Brightness & Wide Temp.
- Resizing LCD Module
- In-house Optical Bonding
- T-con Board Development
- Fully Customization

## Vertical Integration

- HDMI / DP / VGA / VGA Board
- Metal / Plastic parts provide
- Smart Display

## Production Capacity

- Glass-cutting: up to G6 generation (Size of G6 Glass: 1800mm x 1500mm)
- Optical Bonding: up to 23.8"



## Quality Control

- Experienced with quality control and providing highly qualified products to customers
- Experienced employees and various inspection instruments.

- Provide products with longevity, stability, and high quality to customers.
- Work and growth with our customers.
- Keep developing new products.

## Value Added

- Brightness enhancement
- Signal Converter Board design
- Corning Gorilla Glass & AMGG
- Customized open frame
- Smart Display

# Factory Equipment Overview



**IC Bonding Machine  
(Semi-automatic)**



**FPC Bonding Machine  
(Semi-automatic)**



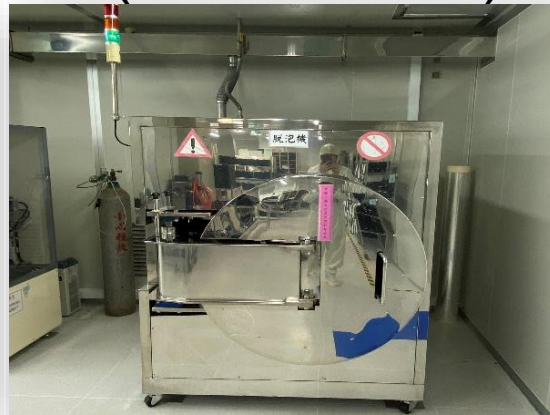
**Panel Cutting Machine**



**OCA Bonding machine**



**IC/FPC Bonding Machine  
(Fully-automatic)**



**Automatic Pressure  
Degassing Machine**



**PLZ/Film Cutting Machine**



**Inspection Station**





# Factory production capacity

## Glass cutting machine (mother glass)

- Capability:

G4.5(730\*920mm) & G6(1850\*1500mm)



## IC/FPC Bonding machine

- Capability : **Max. 10.4"** (Semi-automatic) Ex: 7.0" About 25K/M
- Capability : **Max. 15.6"** (Fully-automatic) Ex: 7.0" About 80K/M



## Polarizer Laminating Machine

- Capability : **Max. 15.0"** Ex: 7.0" About 35K/M

## OCA Bonding machine

- Capability: **Max. 23.8"** (Cover: 640 x 390 mm) Ex: 7.0" About 15K/M

# ONation TFT LCD Product & Services

## TFT LCD Module



### LCD Solution

- Sunlight readable
- High Resolution
- Wide view angle
- Wide temperature

### Touch Solution

- RTP /CTP
- AG/AF/AR/IR cut
- Air/Optical bonding

### Accessories Solution

- Various AD board
- Cable

- Main Size : 7.0"~23.8"
- Interface : TTL 、 LVDS 、 HDMI 、 eDP 、 MIPI....etc.
- ODM/OEM/Customize service
- More Highly Integration solution



# ONation TFT LCD Product & Services

## Optical bonding service

- Optical bonding is performed **at our own factory in Taiwan.**
- Supports LCM sizes up to **23.8 inches.**
- Supports cover glass sizes up to **640 x 390mm.**

### – Features

- ➡ **Excellent display performance**
  - Improve light transmittance.
  - Reduce reflection.
- ➡ **Improve durability**
  - Increase impact resistance.
- ➡ **Prevent frost and particle**



# OCA Introduction

ONation's main customers are in the industrial sector (FA/vehicles/ships, etc.), so we **mainly propose urethane-based** products to our customers. If cost is a consideration, we can also provide **acrylic-based** products, and **silicone-based** products for special industries.

OCA Type	Feature	Recommend Application
Acrylic	<ul style="list-style-type: none"> <li>• Wide range using.</li> <li>• Low cost.</li> <li>• Easier to be yellowing.</li> </ul>	<ul style="list-style-type: none"> <li>• Indoor machine.</li> <li>• Consider cost and price.</li> </ul>
★PU (urethane)	<ul style="list-style-type: none"> <li>• Low cost.</li> <li>• Not easy to be yellowing.</li> </ul>	<ul style="list-style-type: none"> <li>• Automotive</li> <li>• General industry application.</li> </ul>
Silicon	<ul style="list-style-type: none"> <li>• Good durability</li> <li>• Suitable for wide temperature application.</li> <li>• Not easy to discolor.</li> </ul>	<ul style="list-style-type: none"> <li>• Outdoor machine.</li> <li>• Special industry such as Automotive, Marine, Aerospace industry</li> </ul>

※ OCA : Optical Clear Adhesive



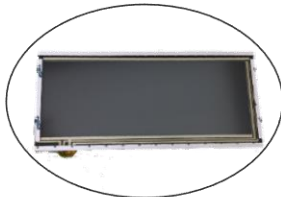
# Open Frame Introduction

## Open Frame Monitor

- We handle everything **from housing design to assembly** in our own factory
- We can integrate LCM signals, power supplies, and cables
- Material: Metal/SUS/aluminum alloy...
- Waterproof and dustproof (IPXX)



LCD Module



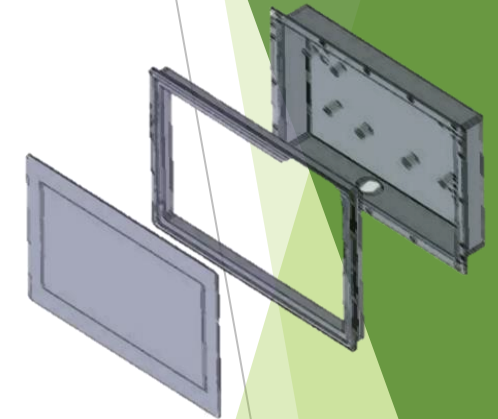
Bar Type with Touch Panel



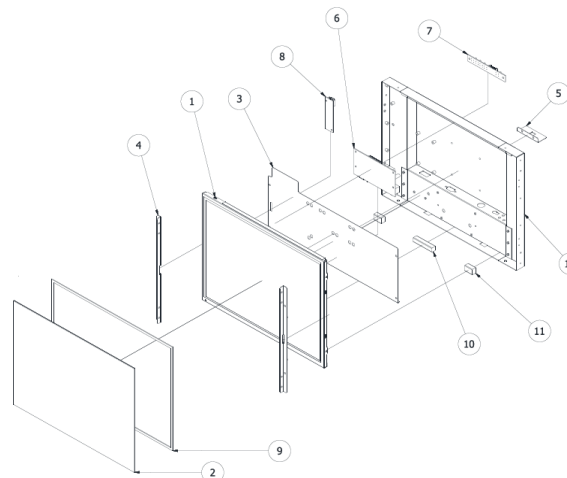
Open Frame Solutions

- ① 6.3" Open frame total solution (gaming)  
7.0" LCM => 6.3" bar type with T/P  
=> 6.3" Open Frame Solutions

### ③ 7.0" waterproof monitor (HMI)



### ② 15.0" Fully customized Openframe (Medical Devices)



# Our Successful Stories

## Industrial



- Application : Metal detection equipment
- LCD Size : 7.0"(800x480)+RTP



- Application : Factory Automation Equipment
- LCD Size : 8.4"(1024x768)+CTP



- Application : Measuring Instrument
- LCD Size : 8.4"(800x600)



- Application : Smart Parking system
- LCD Size : 10.1"(1280x800)+CTP,CG 6mm



- Application : Smart Locker
- LCD Size : 10.4" & 15.0"(1024x768)



- Application : Bus Information Monitor
- LCD Size : 21.5"(1920x1080)

# Our Successful Stories

## Medical



- Application : Physiological Monitor
- LCD Size : 12.1"(1024x768)



- Application : Medical Robotics Systems
- LCD Size : 12.1"(1280x800)+CTP



- Application : Mechanical ventilator
- LCD Size : 10.4"(1024x768)



- Application : Aesthetic Medical Equipment
- LCD Size : 15.0"(1024x768)+RTP,Open frame

## Marine



- Application : Fish finder / Navigation
- LCD Size : 4.3"、7.0"、10.1"、12.1"、
- Brightness : up to 1000nits
- Sunlight readable/AR/UV-cut
- Dimming Function





# Your Reliable Display Partner

- Experienced in the industrial market.
- Focus on the following applications:  
*HMI/POS/Marine/Security/Automotive/OA...*
- Customization & highly flexible production service
- Local components sourcing & OEM/ODM service
- Design, manufacturing, and system solution service  
*(LCD Module, Touch panel, Semi-product, module assembly)*

***DMS & One-stop-shopping***

**Design, Manufacturing and System solution service**