



**MODULAR
END-LINE-PACKAGING**

SCORING WITH HIGH PERFORMANCE

5

CONTINENTS

45

COUNTRIES

90

EMPLOYEES

1951

FOUNDED

4.500

m² FACTORY AND PRODUCTION PREMISES

EXPERIENCE COUNTS. SCHÄFER & FLOTTMANN.

Schäfer & Flottmann have been specialising in the automation of packaging and product-sorting processes for over 60 years. Our machines are predominantly used in the food and beverage industries, but are also used in many non-food sectors. As a family company in its third generation, we value flat hierarchies and short decision-making processes.

This is one of the many reasons why numerous important and notable manufacturers from around the world have put their trust in us and commissioned us to automate their labor intensive and thus expensive processes.

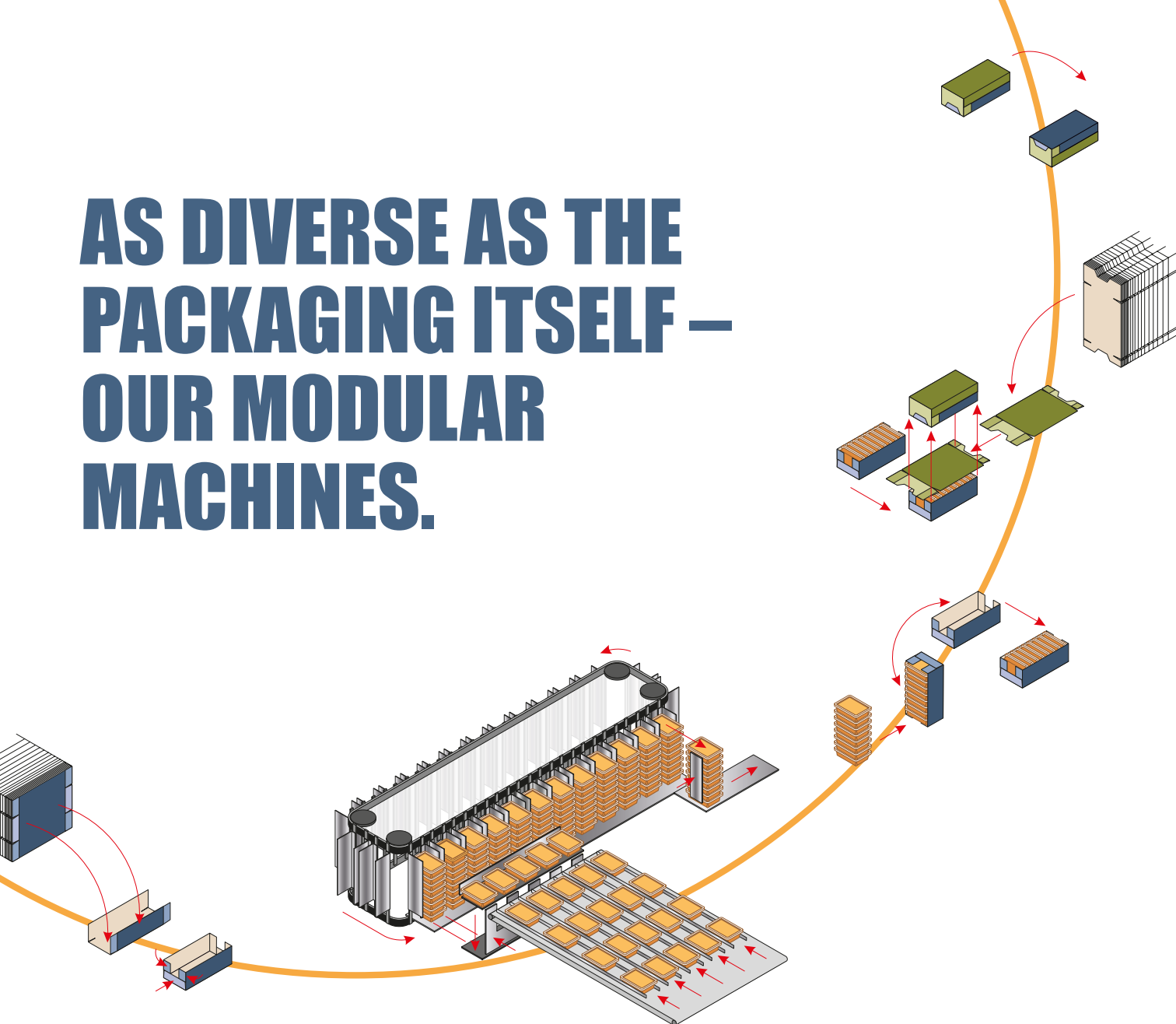
High flexibility, a wide range of products and high outputs are the result of decades of innovative design and construction work.

Whether as an individual packaging machine or as a complex, individually designed packaging line – we develop the ideal solution for you. Thanks to the modular design of our machines, you can rely on receiving a future-proof machine in line with the latest technology.

As such, we do not just develop machines; but rather solutions for your challenges that really pack a punch.



AS DIVERSE AS THE PACKAGING ITSELF – OUR MODULAR MACHINES.



Erecting, wrapping, sorting, grouping, configuring, filling, packaging, closing, stacking, palletising – our machines and systems cover the entire packaging spectrum. Their modularity is not just reflected in our machine and line concepts; it also enables the individual integration of wide-ranging additional modules, such as layerpad or leaflet depositors, partition inserters or even turning devices.

Whether 60 cartons or 480 tubs per minute or 12.000 bottles per hour: with us, high output is a matter of principle. As a result of continuous further development, Schäfer & Flottmann have been setting the standards amongst the competition over recent years.

Depending upon your requirements, the machines are equipped with double-step cell chains, duplex pick and place systems as well as two blank magazines – and all as part of machines designed with a service-friendly concept.

The result: Processes are further accelerated, changes are made easier, and idle times are reduced to a minimum. A real bonus for packaging processes and efficiency.

60

CARTONS PER MINUTE

480

TUBS PER MINUTE

12.000

BOTTLES PER HOUR

FEATURES OF THE MACHINES

Modular design right up to the machine control system

Flexible set-up for wide-ranging packaging tasks and customer requirements

Functional reliability and gentle product handling

Repeatable format changes

Low-maintenance, robust construction for high availability of the machines over the long term

Nonrusting materials

User-friendly display

Hygienic design; suitable for operation in the wet area

Service-friendly machine concepts



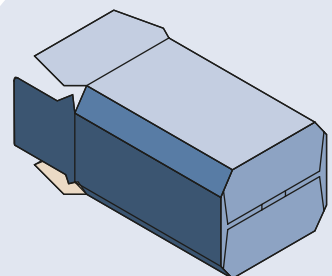
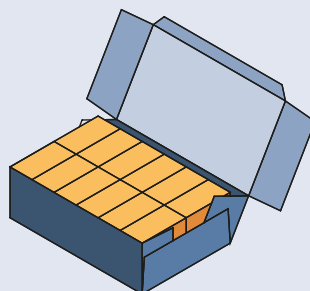
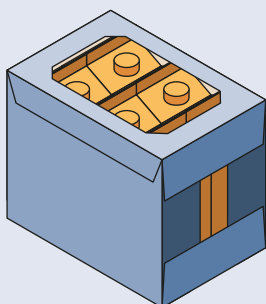
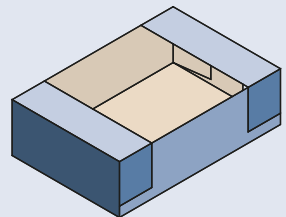
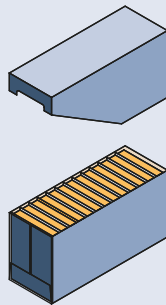
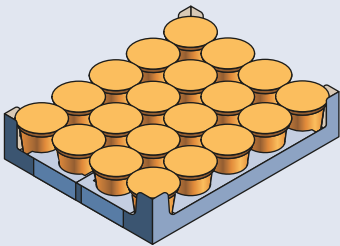
FLEXIBILITY THAT YOU CAN COUNT ON.

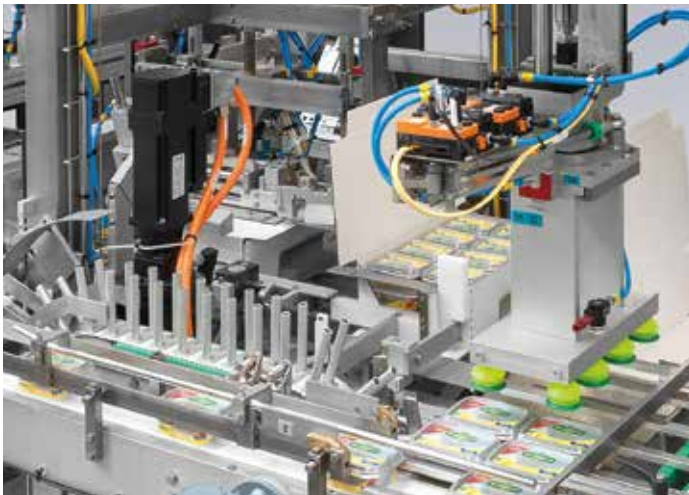
The most wide-ranging product types and sizes as well as diverse packaging configurations and carton sizes – all on one single machine. With Schäfer & Flottmann, this calculation adds up. This means 50 carton formats and more can be processed on just one machine. Repeatable, with rapid format change and short reversal times.

Automatic format adjustment is also possible in many areas. Whether with horizontal or vertical processing and packaging. In RSC, wrap-around or display cartons, plastic trays, inter-section trays or open trays. With or without lids. As a tuck-in hood or with a fitted and glued hood.

The different packaging options available are vast, just like the wealth of products to be packaged. From 10g mini portions to butter bricks, tubs, bottles, tins, carton packs and soft packs, right up to 50 litre containers – everything can be processed using our machines.

As such, Schäfer & Flottmann serve the most wide-ranging industries: from food to beverages to non-food.





60 YEARS 200 MACHINE CONCEPTS

Simple operation: Thanks to text display and integrated menu navigation

Service-friendly: All machine parts are easily accessible

Gentle processing: Even for sensitive products.

Flexible adjustment: The most varied packaging on the one machine.

PACKING PRECISION. FOR EVERY REQUIREMENT.



From direct transfer from your production line to intermediate warehousing, commissioning and the configuration of various ranges with subsequent fully automatic packaging right up to palletising: We develop the perfect packaging solution for you. The steps involved depend upon your packaging and products.

Transfer cassettes are used to push carton packaging etc.; whilst telescopic conveyors fan out soft products and bag packaging. Soft bricks of butter are precisely layered by a driven tongue plate. Optimised handling tools create extremely accurate and precise folds. We can also address your specific requests using integrated systems, for example to weigh bulk goods.

Our equipment offers a whole host of different technologies to process your products properly and with care. From pneumatic grippers to the form-locked grasping of bottles to mechanical gripper fingers and suction heads for the secure insertion of tubs with snap-on lids or portion packs.



ERECTORS

**PACKAGING
MACHINES**

**BOTTLE
WRAPPERS**

PACKERS

**CLOSING AND
LIDDING UNITS**

**ROBOT
PALLETISERS**

**SORTING
AND PICKING
EQUIPMENT**

24

HOURS AVAILABLE TO YOU

400

SATISFIED CUSTOMERS



ANDECHSER MOLKEREI | AGRANA | ALIMENTOS POLAR | ALPRO | ARLA | ASBACH | ASTURIAS | BUNGE | CALIFORNIA DAIRIES | CEVITAL | CHAMPAGNE MUMM | CHAMPAGNE ROEDERER | CHIVAS | CONDITESS | CORMAN | DANONE | DMK | ECOMILK | EH RMANN | EMMI | EURASIAN FOODS | EVEN SANTÉ | FONTERRA | FÜNGERS | FRIESLANDCAMPINA | GOLDSTEIG | GROPPER | HEINRICHSTHALER | HEINZ | HENKELL & CO. | HOMANN | IDB | JOHANNA FOODS | KHS | KRONES | KÜHLMANN | LACTALIS | LAITA | LES GRANDS CHAIS DE FRANCE | LIEKEN | MARTELL | MEGGLE | MLEKPOL | MICHAEL HUBER MÜNCHEN | MILCHWERKE BERCHTESGADENER LAND | MILCHWERKE SCHWABEN | NADLER | NESTLE | NÖM | OSM PIATNICA | OTTO SCHACHINGER | PEERLESS | PETER MERTES | PROCTER & GAMBLE | PÜHL | ROTKÄPPCHEN-MUMM | RÜCKER | SACHSENMILCH | SANTA BREMOR | SCHWARTAUER WERKE | SCHWARZWALDMILCH | TYRAS | UNDERBERG | UNILEVER | VANDEMOORTELE | VOGTLANDMILCH | WEIN- UND SEKTKELLEREI OSTRAU | ZOTT | ZÜGER | ZWEIFEL-POMY CHIPS



FOR US, HIGH-PERFORMANCE IS NOT JUST ABOUT NUMBERS: OUR SERVICE.

From the analysis of the current situation to advice on the package itself, production and delivery of the components right up to the installation and commissioning of complete packaging lines, including interface responsibility – Schäfer & Flottmann provide everything from the one source. And with the experience of a family company, which has been successfully producing for over 60 years.

Providing a personal service is a matter of course for us. Even around the clock. We are easy to reach and we always give you a competent point of contact for your project – this helps to avoid confusion and speeds up implementation.

Our team of experienced engineers has been together for years. And this also helps to ensure a professional and responsible order processing. It is not just the final assembly of the machines and commissioning at your premises; but also the training of your staff and service – our experienced technicians take care of all of these tasks. After all, they know the machines better than anyone; right down to the smallest detail.

Our production is distinguished by a high in-house production depth and modern CNC processing centres.

This guarantees excellent quality, short delivery times and gives us the flexibility that is valued by our customers. The benefits can be seen in our After Sales as well. Nevertheless, for current or previous generations of machines: We deliver the correct parts quickly and, in doing so, help to ensure the long life span of our machines.

Our remote maintenance service also helps to keep downtimes short – faults can be remedied quickly at all times by examining the software.



MODULAR END-LINE-PACKAGING

RANGE OF PRODUCTS

ERECTORS

For cartons, open trays and
intersection trays

PICK-AND-PLACE-MODULES

PACKAGING MACHINES

For trays, with and without lids
Wrap-around cartons and
RSC cartons

SORTING AND PICKING EQUIPMENT

CLOSING AND LIDDING UNITS

ROBOT PALLETISERS AND HANDLING SYSTEMS

BOTTLE-WRAPPING SYSTEMS

ADDRESS

SCHÄFER & FLOTTMANN GMBH & CO. KG

Esborner Str. 97 – 103
D - 58285 Gevelsberg

Tel +49 (0) 2332 9596 0
Fax +49 (0) 2332 9596 190
Mail sales@sfs-net.de
Web www.sfs-net.de