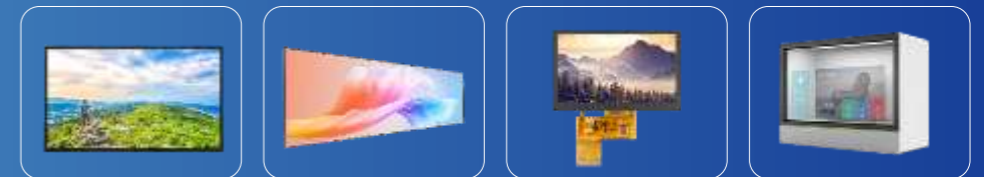


Shenzhen Rogin Electronics CO.,LTD

LCD WORLD LIMITED

Manufacturer of special kinds of LCD screen





CONTENTS

01

**Company
Profile**

02

Qualification

03

Products

04

**Development
Strategy**



Shenzhen Rogin Electronics CO.,LTD LCD WORLD LIMITED

Manufacturer of special kinds of LCD screen



01

Company Profile

02

Qualification

03

Product Service

04

Development Strategy



INTEGRITY AND WIN-WIN
CONTINUE TO CREATE LONG-TERM VALUE FOR CUSTOMERS

01

ABOUT US

**MANUFACTURER OF SPECIAL LCD SCREEN**

Professional solution provider of special LCD screen



15 years of Advantageous raw material supply chain

15 years of LCD module R&D and design

Has 13 years of high-brightness backlight technology precipitation

11 years of cutting experience in large size LCD modules

.....

Shenzhen Rogin Electronics is a national high-tech enterprise founded and deeply developed by the team led by Mr. Sun Xianglong, and now it is a Specialized&Proficient and Creative enterprise in Shenzhen, and it is a leading provider of special-shaped LCD display and LCD panel backlight system brightening solutions in China

Rogin was founded in 2009, that was consists of Shenzhen headquarters and production base (Shenzhen Manufacturing Center / Hubei Manufacturing Center / Huizhou Manufacturing Center), Rogin has 12 production lines (3 in Shenzhen, 5 in Hubei and 4 in Huizhou), with a monthly production capacity of 900Kpcs small size screen, 40Kpcs high brightness big screen, and 10Kpcs bar type screen.

Rogin has always been committed to providing partners with timely, accurate, high-quality, low-cost series of LCD screens (high-brightness LCD screen, strip LCD screen, transparent LCD screen, small and medium-size LCD screen, square screen/round screen machine and Commercial display machine) customization, research and development, production, sales, after-sales etc and other comprehensive business solutions and services.

**On 2017 LCD WORLD LTD established for Oversea market
Registered in Hongkong**

DEVELOPMENT HISTORY

2009**Rogin**

Founded in Shenzhen

2016National High-Tech
Enterprise**2018****Hubei Rogin** Founded
(Hubei Manufacturing Center)**2023****New Headquarter** in Shenzhen
(Separate production and marketing)**2013****Longxiang Excellent** Founded
(Shenzhen Manufacturing
Center)**2017****LCD WORLD** Founded**2022****Shenzhen SRDI Enterprise**S – Specialized D - Differential
R – Refined I - Innovational**2024****New Factory** in Huizhou
(Huizhou Manufacturing
Center)15
YEARS



TEAM Building



Enable employees to work and grow happily

We are a united team.....



Headquarter

- Shenzhen Xixiang
- Sales and marketing, R&D, Purchasing, Financial, HR

Shenzhen Manufacture Center

- Shenzhen Shajing, 25Km to HQ, 40mins by car
- Small size TFT module, 0.96"-10.1"

Hubei Manufacture Center

- Hubei Xiangyang, 1250Km to HQ, 2 hours by flight
- Small size TFT module, 0.96"-10.1",
- Projector LENS

Huizhou Manufacture Center

- Huizhou Zhongkai, 100Km to HQ, 1.5 hours by car
- High Brightness TFT module, 10.1"-98"
- Stretched and square TFT module
- Completely Display Unit

LCD WORLD LIMITED

- Commercial purpose for oversea business



01

Company Profile

COMPANY APPEARANCE

Shenzhen headquarters

1500m²

SITE SIZE

**R&D, Marketing and Sales, Supply chain, Financial,
HR with Show Room**



01

Company Profile

COMPANY APPEARANCE

Shenzhen Manufacturing Center

3000 m²

Production site

1000 m²

Thousand-grade
clean workshop

100

Employees

400 k

Monthly capacity
(small size)



Main products: FOG, Small size LCD module.

Republic 8th industrial Zone ShaJing Street BaoAn District ShenZhen City



COMPANY APPEARANCE

Hubei Manufacturing Center

15000 m²

Production site

5000 m²Thousand-grade
clean workshop**100**

Employees

500 KMonthly capacity
(small size)

Main products: Projector lens, Small size LCD module.

Yicheng Ecologic Development Zone, Xiangyang City, Hubei Province



Erxi Science and Technology Industrial Park, Zhongkai High-tech Industrial Development Zone, Huizhou

COMPANY APPEARANCE

Huizhou Manufacturing Center

10000 m²

Production site

2500 m²

Thousand-grade clean workshop

200

Employees
(Full Capacity)

50 K

Monthly capacity
(medium and big size)

Main products: High brightness/Bar-type LCD module, Commercial display machine.



COMPANY APPEARANCE



Cutting Line



High Brightness Big Size Module Line



Aging Test Room

COMPANY APPEARANCE



Warehouse
Incoming Material



Warehouse
Electrical
Material



Warehouse
Backlight Sheet
Material



Warehouse
Finished Products



Shenzhen Rogin Electronics CO.,LTD

LCD WORLD LIMITED

Manufacturer of special kinds of LCD screen

01

Company Profile



02

Qualification



03

Products

04

Development Strategy

INTEGRITY AND WIN-WIN
CONTINUE TO CREATE LONG-TERM VALUE FOR CUSTOMERS

02

CERTIFICATE OF HONOR

- National High-Tech Enterprise
- Shenzhen SRDI Enterprise
- Membership of Shenzhen Commercial LCD Industry Association
- Shenzhen Display Technology Institute, Jointed with Anhui Industry University
- More than 40 awards with company growth



QUALIFICATION CERTIFICATION

- **ISO9001** Certification
- **ISO14000** Certification
- **ISO45001** Certification
- **CCC** Certification
China Compulsion Certification
- **CECP** Certification
China Energy Conservation Product



ISO9001



ISO14001



ISO45001



CCC



CECP



PATENT CERTIFICATE

We are a leading provider of special LCD and solutions in China and have more than 100 authorized patents



10⁺ patent for invention

25⁺ copyright of computer software

65⁺ utility model patent



Shenzhen Rogin Electronics CO.,LTD

LCD WORLD LIMITED

Manufacturer of special kinds of LCD screen

01

Company Profile

02

Qualification

03

Products

04

Development Strategy

INTEGRITY AND WIN-WIN

CONTINUE TO CREATE LONG-TERM VALUE FOR CUSTOMERS

03

SERIES PRODUCTS

A full range of special LCD screen products**High-brightness Big Size TFT**

10.1-86 inch / brightness can be customized

**Bar Type TFT**

Based on original size 4.3-86 inch / Size can be customized

**Small and Medium Size TFT**

1.44-10.1 inch FPC+TP+BL customization

**Transparent TFT**

21.5-90 inch /Transparent showcase and refrigerator

**Complete TFT Display Unit**

Square screen/Special shaped screen

Full Service**Pre-sale**

Provide satisfactory program recommendations as well as price and feature introduction

**On sale**

Provide high quality product satisfactory technical solution on scheduel

**After sale**

Provide installation/commissioning guidance handle exceptions ,quick response for 8-hour, hotline service for 24-hours

High-brightness Big Size TFT | Product advantages



- ★ Brightness customization 700-5000cd/m²
Outdoor sunlight readable, Cheap Tooling cost(1000-1500USD)
- ★ Low Power consumption
- ★ Long lifetime Standard 50Kh(TYP) → 70Kh(TYP)
- ★ High uniformity (Up to 85% uniformity)
- ★ Wide Temperature Range 0°C-50°C → -20°C-70°C → -30°C-80°C
- ★ High Reliability, high shock resistance and stability
- ★ Proposal including LED driver board, HDMI/DP board or Android OS

Our own Backlight design

- ◆ Aluminum material
- ◆ Structure, mechanical and LED bar
- ◆ LED choose
- ◆ LED efficiency

| Size | P/N | Resolution | Interface | AA | OD | Brightness | Top |
|------|---------------|------------|-----------|-----------------|--------------------|------------|--------|
| 10.4 | LW104KFLN3-01 | 1024*768 | LVDS 1 ch | 210.43*157.824 | 227*175.8*9.2 | 1500 | -30-80 |
| 12.1 | LW121KFLN3-01 | 1024*768 | LVDS 1 ch | 245.76*184.32 | 260.5*204*8.46 | 1000 | -30-80 |
| 12.1 | LW121MFLN6-01 | 1280*800 | LVDS 1 ch | 261.12*163.2 | 277.7*180.6*9.5 | 1500 | -20-70 |
| 13.3 | LW133RFEN2-02 | 1920*1080 | eDP | 293.76*165.24 | 307.6*183.05*6.7 | 800 | -20-70 |
| 15.0 | LW150KFLN1-02 | 1024*768 | LVDS 1 ch | 304.128*228.096 | 326.5*253.5*9.7 | 1500 | -20-70 |
| 15.0 | LW150KFLN1-01 | 1024*768 | LVDS 1 ch | 304.128*228.096 | 326.5*253.5*9.7 | 1000 | -20-70 |
| 15.0 | LW150KFLN2-02 | 1024*768 | LVDS 1 ch | 304.128*228.096 | 326.5*253.5*9.6 | 1000 | -30-80 |
| 15.6 | LW156RFEN3-05 | 1920*1080 | eDP | 344.16*193.59 | 360*212.3*6.3 | 1000 | -20-70 |
| 17.0 | LW170NFLN1-01 | 1280*1024 | LVDS 2 ch | 337.92*270.336 | 358.5*296.5*10.3 | 1000 | 0-50 |
| 18.5 | LW185RFLN2-02 | 1920*1080 | LVDS 2 ch | 408.96*230.04 | 430.37*254.6*11.2 | 1000 | 0-50 |
| 18.5 | LW185RFLN2-03 | 1920*1080 | LVDS 2 ch | 408.96*230.04 | 430.4*254.6*12 | 1200 | -30-80 |
| 19.0 | LW190NFLN1-01 | 1280*1024 | LVDS 2 ch | 374.784*299.82 | 396*324*10.4 | 500 | 0-50 |
| 21.5 | LW215RFLN5-04 | 1920*1080 | LVDS 2 ch | 476.64*268.11 | 502.8*299.18*16 | 1500 | -20-70 |
| 21.5 | LW215RFLN5-07 | 1920*1080 | LVDS 2 ch | 476.64*268.11 | 495.6*292.2*9.5 | 1000 | -20-70 |
| 21.5 | LW215RFLN5-05 | 1920*1080 | LVDS 2 ch | 476.6*268.1 | 502.82*294.26*36.2 | 5000 | -20-70 |
| 23.8 | LW238RFLN6-02 | 1920*1080 | LVDS 2 ch | 527.04*296.46 | 557.2*326.6*17.5 | 1500 | 0-50 |
| 23.8 | LW238RFLN6-03 | 1920*1080 | LVDS 2 ch | 527.04*269.46 | 554.04*323.53*41 | 3500 | 0-50 |
| 24.0 | LW240RFLN1-03 | 1920*1080 | LVDS 2 ch | 531.36*298.89 | 556*323.2*17 | 1000 | -20-70 |
| 27.0 | LW270RFLN2-04 | 1920*1080 | LVDS 2 ch | 597.6*336.15 | 613.6*356.85*10.5 | 700 | 0-50 |
| 27.0 | LW270RFLN2-03 | 1920*1080 | LVDS 2 ch | 597.6*336.14 | 628*366.4*23.7 | 1500 | 0-50 |
| 27.0 | LW270RFLN2-05 | 1920*1080 | LVDS 2 ch | 597.6*336.15 | 630*368.2*13 | 1000 | 0-50 |
| 32.0 | LW320RFLN4-02 | 1920*1080 | LVDS 2 ch | 698.4*392.84 | 729.4*424.2*29.5 | 1000 | 0-50 |
| 32.0 | LW320VFN2-01 | 3840*2160 | V-by-One | 698.4*392.85 | 751.5*446.01*30.5 | 1000 | 0-50 |
| 32.0 | LW320RFLN2-01 | 1920*1080 | LVDS 2 ch | 698.4*392.85 | 729.4*424.2*29.5 | 1500 | -20-70 |
| 32.0 | LW320RFLN1-06 | 1920*1080 | LVDS 2 ch | 698.4*392.85 | 731.9*431.4*56 | 2000 | -20-70 |

| | | | | | | | |
|------|---------------|-----------|-----------|-----------------|-------------------|------|--------|
| 43.0 | LW430RFLN1-07 | 1920*1080 | LVDS 2 ch | 941.184*529.416 | 973.2*561.5*29.5 | 1500 | 0-50 |
| 43.0 | LW430RFLN2-03 | 1920*1080 | LVDS 2 ch | 941.18*529.42 | 973.2*561.5*29.5 | 1500 | -20-70 |
| 43.0 | LW430RFLN2-01 | 1920*1080 | LVDS 2 ch | 940.896*529.254 | 965.2*553.4*55 | 2000 | -20-70 |
| 43.0 | LW430RFLN2-04 | 1920*1080 | LVDS 2 ch | 940.9*529.25 | 973.8*567*56.4 | 2500 | -20-70 |
| 43.0 | LW430VFN1-02 | 3840*2160 | V-by-One | 941.18*529.42 | 973.2*561.5*20.3 | 500 | 0-50 |
| 43.0 | LW430RFLN2-05 | 1920*1080 | LVDS 2 ch | 940.9*529.25 | 966.8*554.8*60.7 | 3500 | -20-70 |
| 43.0 | LW430VFN3-01 | 3840*2160 | V-by-One | 941.18*529.42 | 973.8*567*58.4 | 1000 | 0-50 |
| 49.0 | LW490RFLN1-01 | 1920*1080 | LVDS 2 ch | 1073.8*604 | 1098*628*55 | 2500 | 0-50 |
| 49.0 | LW490VFN1-01 | 3840*2160 | V-by-One | 1073.78*604 | 1103.8*634*31.5 | 1500 | 0-50 |
| 49.0 | LW490VFN1-02 | 3840*2160 | V-by-One | 1073.78*604 | 1106.4*641.6*57.5 | 3500 | 0-50 |
| 55.0 | LW550RFLN2-03 | 1920*1080 | LVDS 2 ch | 1209.6*680.4 | 1243*725.4*36.7 | 1500 | -30-80 |
| 55.0 | LW550RFLN2-04 | 1920*1080 | LVDS 2 ch | 1209*680.4 | 1233.6*704.4*55 | 2000 | -20-70 |
| 55.0 | LW550RFLN2-02 | 1920*1080 | LVDS 2 ch | 1209.6*680.4 | 1242.1*718*56.1 | 2500 | -30-80 |
| 55.0 | LW550RFLN1-04 | 1920*1080 | LVDS 2 ch | 1209.6*680.4 | 1242.1*718*58.1 | 2000 | 0-50 |
| 55.0 | LW550RFLN1-05 | 1920*1080 | LVDS 2 ch | 1209*680.4 | 1233.6*704.4*55 | 3500 | -20-70 |
| 55.0 | LW550VFN2-06 | 3840*2160 | V-by-One | 1209*680.4 | 1242.1*718*55.6 | 2000 | -20-70 |
| 65.0 | LW650VFN1-01 | 3840*2160 | V-by-One | 1428.48*803.52 | 1452.4*827.5*61 | 2000 | -30-80 |
| 65.0 | LW650VFN1-02 | 3840*2160 | V-by-One | 1428.48*803.52 | 1452.4*827.5*61 | 2600 | -30-80 |
| 65.0 | LW650VFN2-01 | 3840*2160 | V-by-One | 1428.5*803.5 | 1461*843.1*59.5 | 2000 | 0-50 |
| 65.0 | LW650VFN1-03 | 3840*2160 | V-by-One | 1428.48*803.52 | 1454*828.7*58.6 | 3500 | -30-80 |
| 65.0 | LW650VFN2-02 | 3840*2160 | V-by-One | 1428.48*803.52 | 1454*828.7*58.6 | 3500 | 0-50 |
| 75.0 | LW750VFN1-02 | 3840*2160 | V-by-One | 1649.66*927.94 | 1689*971*66.15 | 2000 | 0-50 |
| 75.0 | LW750VFN2-02 | 3840*2160 | V-by-One | 1649.7*927.9 | 1683*975.4*55.3 | 3500 | -30-80 |
| 86.0 | LW860VFN1-02 | 3840*2160 | V-by-One | 1895.04*1065.94 | 1933*1108.5*72.1 | 1000 | 0-50 |
| 86.0 | LW860VFN1-01 | 3840*2160 | V-by-One | 1895.04*1065.94 | 1933*1108.5*72.1 | 2500 | 0-50 |

High-brightness Big Size TFT | Application



Bus station



Outdoor advertising machine



Outdoor newspaper column



Gas station



EV charging station

Application



Information searching machine

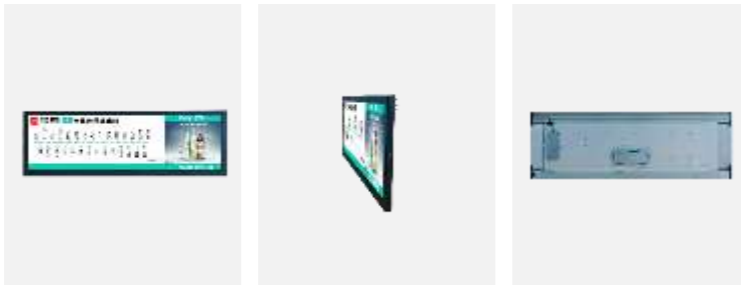
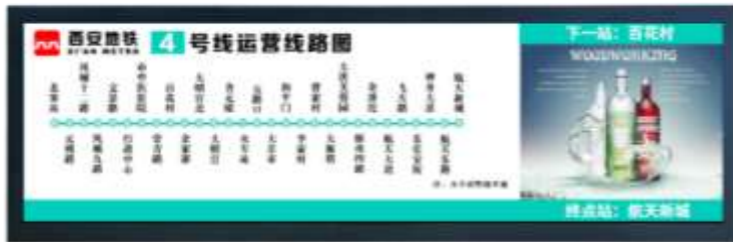


Delivery locker



Waste sorting box

Bar Type TFT | Product advantages



- ★ Same features as big size high brightness solution
- ★ 2 Cutting Lines based on our own design
 - Polarizer cutting machine
 - Glass cutting machine
 - Sealing machine
- ★ Longest size can be cut is 2m, equal to 86 inch OC (MP 75" with 1.7m)
- ★ Advanced cut technology to ensure high production yield and precision
- ★ **High reliability, with same features as original OC.**
- ★ High anti-vibration, fulfilled the metro and public transportation fields
 - First manufacturer for cut solution in China
- ★ Available cut in horizontal and Vertical
- ★ In horizontal cut in any size
- ★ Focused on big size cut solution

Our own TFT cutting technology and Backlight design

| Size | P/N | Resolution | Interface | AA | OD | Brightness | Top |
|-------|-------------|------------|-----------|---------------|-------------------|------------|--------|
| 9 | LWB090B-01 | 1280*448 | LVDS 1 ch | 216.96*75.936 | 228*90*3.85 | 500 | -10-50 |
| 10.25 | LWB1025A-01 | 800*256 | LVDS 1 ch | 246.0*78.72 | 260.2*96.2*10 | 600 | -20-70 |
| 12.3 | LWB123A-01 | 1024*255 | LVDS 1 ch | 304.13*76.03 | 325.9*98.48*11.6 | 500 | -20-70 |
| 13.8 | LWB138A-01 | 1920*358 | LVDS 2 ch | 344.16*61.17 | 371.5*90.1*12.7 | 700 | 0-50 |
| 14.9 | LWB149A-02 | 1280*204 | LVDS 2 ch | 374.78*60 | 399.78*81*12.88 | 700 | 0-50 |
| 15.1 | LWB151A-01 | 1280*242 | LVDS 2 ch | 374.78*70.86 | 394.8*85.5*16.2 | 600 | 0-50 |
| 15.3 | LWB153A-02 | 1280*342 | LVDS 2 ch | 374.78*100.14 | 396*124*13 | 700 | 0-50 |
| 16.3 | LWB163A-01 | 1920*285 | LVDS 2 ch | 408.96*60.705 | 432*85*14.8 | 800 | -20-70 |
| 16.4 | LWB164A-01 | 1366*230 | LVDS 1 ch | 409.7*69 | 431.8*94.8*14.7 | 700 | 0-50 |
| 16.8 | LWB168A-01 | 1366*384 | LVDS 1 ch | 409.7*115.2 | 431.8*141*14.7 | 700 | 0-50 |
| 16.9 | LWB169A-01 | 1920*624 | LVDS 2 ch | 408.96*133 | 430.4*158.5*23.8 | 800 | -20-70 |
| 17 | LWB170A-01 | 1280*658 | LVDS 2 ch | 374.78*193 | 395.2*217.16*13.5 | 1000 | 0-50 |
| 17.2 | LWB172A-01 | 1920*714 | LVDS 2 ch | 408.96*152.1 | 439*179.3*19.15 | 500 | 0-50 |
| 17.2 | LWB172B-01 | 1920*714 | LVDS 2 ch | 408.96*152.1 | 439*179.3*19 | 500 | -20-70 |
| 19.1 | LWB191A-01 | 1920*340 | LVDS 2 ch | 476.64*84.4 | 497.4*110.9*13.5 | 700 | 0-50 |
| 19.2 | LWB192A-01 | 1920*360 | LVDS 2 ch | 476.64*89.37 | 496*109.2*11.88 | 500 | 0-50 |
| 19.4 | LWB194A-02 | 1920*510 | LVDS 2 ch | 476.64*126.6 | 495.6*150.7*12 | 1000 | 0-50 |
| 19.7 | LWB197A-01 | 1920*624 | LVDS 2 ch | 476.64*154.9 | 497.4*179.4*14.5 | 1000 | -20-85 |
| 21.9 | LWB219A-01 | 1920*712 | LVDS 2 ch | 527.04*195.5 | 548.4*222.2*14.5 | 1000 | 0-50 |
| 23.9 | LWB239A-01 | 1920*360 | LVDS 2 ch | 597.6*112 | 623.5*140*13.57 | 700 | 0-50 |
| 24.8 | LWB248A-01 | 1920*630 | LVDS 2 ch | 597.6*196 | 623.5*224*13.7 | 700 | 0-50 |
| 27.5 | LWB275A-01 | 1920*136 | LVDS 2 ch | 698.4*50 | 714.4*75*19.2 | 700 | 0-50 |
| 27.8 | LWB278A-01 | 1920*294 | LVDS 2 ch | 698.4*106.94 | 734*143*50 | 700 | 0-50 |
| 28 | LWB280A-02 | 1920*360 | LVDS 2 ch | 698.4*130.9 | 732*165*17.3 | 1000 | 0-50 |
| 28 | LWB280B-01 | 1920*360 | LVDS 2 ch | 698.4*130.95 | 729.3*167.3*17.2 | 1200 | 0-50 |

| | | | | | | | |
|-------|--------------|-----------|-----------|----------------|---------------------|------|--------|
| 28 | LWB280A-03 | 1920*360 | LVDS 2 ch | 698.4*130.95 | 732*165*17.3 | 1500 | 0-50 |
| 28.4 | LWB284A-01 | 1920*511 | LVDS 2 ch | 698.4*186 | 727.4*215*19.3 | 700 | 0-50 |
| 28.6 | LWB286A-01 | 1920*540 | LVDS 2 ch | 698.4*196.43 | 732*231.6*19.4 | 500 | 0-50 |
| 28.8 | LWB288A-01 | 1920*540 | LVDS 2 ch | 698.4*196.43 | 735.8*233.8*18.1 | 700 | 0-50 |
| 35.6 | LWB356A-01 | 1900*2160 | V-by-One | 598.5*680.4 | 628.6*711*18.7 | 500 | 0-50 |
| 36 | LWB360A-C-01 | 3840*1080 | V-by-One | 878*242 | 926*293*20 | 800 | 0-50 |
| 36.4 | LWB364A-01 | 1920*643 | LVDS 2 ch | 878.1*289.4 | 901.6*313.3*15.69 | 500 | 0-50 |
| 36.6 | LWB366A-01 | 1920*290 | LVDS 2 ch | 919.296*138.85 | 960*174.35*16.9 | 1000 | -20-60 |
| 36.7 | LWB367A-01 | 1920*313 | LVDS 2 ch | 919.3*150 | 948*180*49 | 500 | 0-50 |
| 36.95 | LWB3695A-01 | 1920*360 | LVDS 2 ch | 924.48*168.8 | 965*193.8*17.5 | 1000 | 0-50 |
| 37.6 | LWB376A-01 | 1920*540 | LVDS 2 ch | 919.3*258.55 | 947.3*293.55*55 | 2000 | -10-70 |
| 37.6 | LWB376B-01 | 1920*540 | LVDS 2 ch | 919.3*258.55 | 955.9*304.6*19 | 700 | -20-70 |
| 38 | LWB380B-01 | 1920*540 | LVDS 2 ch | 927.94*260.98 | 973*305*24.6 | 1000 | 0-50 |
| 38.5 | LWB385A-01 | 1920*540 | LVDS 2 ch | 940.9*264.63 | 967.9*296.26*24.9 | 700 | 0-50 |
| 43 | LWB430A-01 | 1920*360 | LVDS 2 ch | 1073.78*201.34 | 1104*227.5*50 | 2000 | 0-50 |
| 43.5 | LWB435B-01 | 1920*480 | LVDS 2 ch | 1073.78*260 | 1105.2*294.2*15.1 | 1300 | 0-50 |
| 43.9 | LWB439A-01 | 1920*540 | V-by-One | 1073.78*302 | 1105*337*49 | 700 | 0-50 |
| 47.8 | LWB478A-01 | 1920*178 | LVDS 2 ch | 1209.6*112.1 | 1244.6*151.5*23.9 | 1600 | -20-70 |
| 47.95 | LWB4795A-01 | 1920*238 | LVDS 2 ch | 1209.6*150 | 1249.2*190*27 | 700 | -20-70 |
| 48.5 | LWB485A-01 | 1920*360 | V-by-One | 1209.6*226.8 | 1249.6*267.8*27 | 700 | 0-50 |
| 48.6 | LWB486A-01 | 3840*820 | V-by-One | 1209.6*257.7 | 1225.8*280*25 | 700 | 0-50 |
| 49.5 | LWB495C-01 | 3840*1080 | V-by-One | 1209.6*340.2 | 1241.45*364.7*26 | 250 | 0-50 |
| 49.5 | LWB495C-02 | 1920*540 | V-by-One | 1209.6*340.2 | 1240.2*370.8*24.5 | 1000 | 0-50 |
| 49.5 | LWB495A-01 | 1920*540 | LVDS 2 ch | 1209.6*340.2 | 1233.6*364.2*54 | 2000 | -20-70 |
| 56.6 | LWB566A-02 | 3840*470 | V-by-One | 1428.48*175 | 1461*204*21.9 | 1000 | -20-70 |
| 57.4 | LWB574A-01 | 3840*810 | V-by-One | 1428.48*301.32 | 1469.5*343.2*18.5 | 1000 | 0-50 |
| 58.4 | LWB584A-02 | 3840*1080 | V-by-One | 1428.48*401.76 | 1470*406*29.6 | 2000 | 0-50 |
| 65.3 | LWB653A-01 | 3840*412 | V-by-One | 1649.66*177 | 1654.66*181.95*23.5 | 1000 | 0-50 |
| 66.1 | LWB661A-01 | 3840*750 | V-by-One | 1649.66*322.2 | 1682.46*360.5*22.7 | 2000 | 0-50 |

Bar Type TFT | Application

Shopping mall



bus



Subway



Back



Exclusive shop

Application



Supermarket shelves



Hospital



Piano



Elevator advertising machine

Small and Medium Size TFT | Product advantages

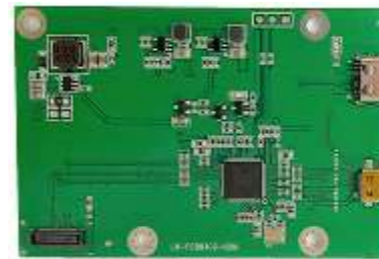


▲ Focused on Design-in project, with added value, based on our strong technical background.

- ★ Convert board, RGB/LVDS/MIPI/EDP/HDMI/DP signal conversion
- ★ Integrated Power supply for TFT driving and LED driver
- ★ High Brightness
- ★ CTP function, like water function, gloves function
- ★ Special request

▲ Small size, high resolution, high brightness, wide Temp.

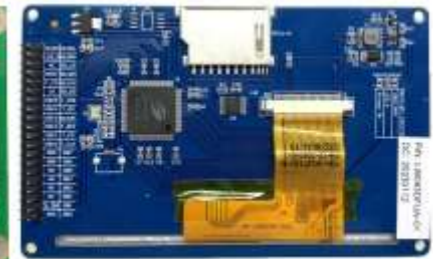
| Size | Resolution | Interface | AA (mm) | OD (mm) | Brightness | Top |
|------|------------|-----------|--------------|-------------------|------------|---------------|
| 2 | 800X480 | LVDS | 46.56X26.784 | 52.96X37.2X2.6 | 500 | -20°C ~ +70°C |
| 2.4 | 800X480 | LVDS | 52.32X31.39 | 58X41.30X2.6 | 700 | -20°C ~ +70°C |
| 2.6 | 1280X720 | LVDS | 57.6X32.4 | 60.9X39.45X2.4 | 700 | -20°C ~ +70°C |
| 3.77 | 1024*600 | LVDS | 82.63*48.42 | 89.82*59.92*2.8 | 700 | -20°C ~ +70°C |
| 4 | 1920*1080 | LVDS | 85.58*49.83 | 94.87*62.22*2.8 | 700 | -20°C ~ +70°C |
| 4.5 | 1920*1080 | LVDS | 100.8*56.7 | 106.84*66.62*2.7 | 700 | -20°C ~ +70°C |
| 5 | 1920*1080 | LVDS | 110.59*62.20 | 116.59*72.76*2.86 | 850 | -20°C ~ +70°C |
| 5.7 | 1920×1080 | LVDS | 126.72×71.28 | 144.56×71.28×5.5 | 1000 | -20°C ~ +70°C |
| 6.7 | 1920×1080 | LVDS | 148.32×83.43 | 164.10×97.30×5.50 | 1000 | -20°C ~ +70°C |



MINI HDMI to MIPI



Micro HDMI to RGB



16bits/8bits interface



LVDS to RGB with LED driver



DP to MIPI with CTP USB



HDMI to LVDS

Small and Medium Size TFT | Application



Projector



Smart home



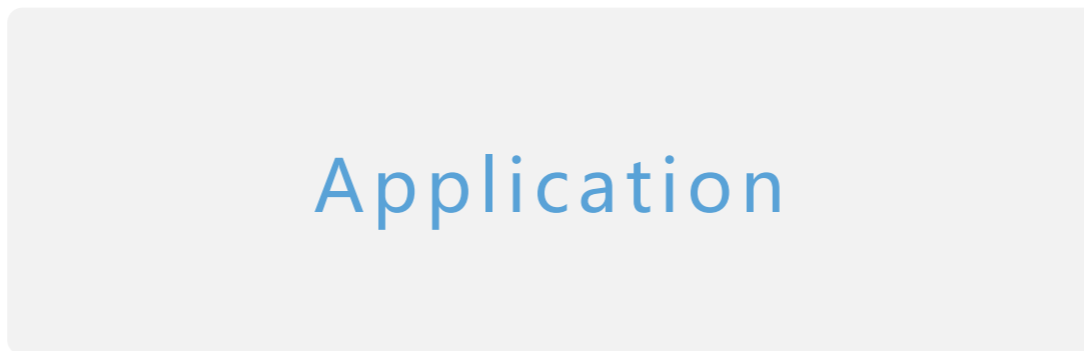
Medical equipment



工控安防



Handheld device



Application



Instrument



Intelligent education



Communication equipment



Face recognition



Automotive

Transparent TFT Showcase | Product advantages



- ★ High transmittance (60%)
- ★ High contrast
- ★ Support customization
- ★ Long life time
- ★ Built-in Android OS
- ★ Size from 21.5" to 90"

| Size | Resolution | AA | OD | Brightness |
|------|------------|-----------|---------------|------------|
| 21.5 | 1920*1080 | 475*298 | 533*410*350 | 500 |
| 32 | 1920*1080 | 706*401 | 826*521*400 | 500 |
| 43 | 1920*1080 | 949*537 | 1069*657*400 | 500 |
| 49 | 1920*1080 | 1082*612 | 1202*732*400 | 500 |
| 55 | 1920*1080 | 1218*689 | 1338*809*400 | 500 |
| 65 | 1920*1080 | 1437*812 | 1577*952*400 | 500 |
| 75 | 1920*1080 | 1659*937 | 1819*1097*400 | 500 |
| 86 | 1920*1080 | 1904*1075 | 2064*1235*400 | 500 |
| 90 | 1920*1080 | 1993*1121 | 2250*1350*500 | 500 |

Transparent TFT | Application

Transparent refrigerator



Shop window



Cosmetics brand shop



Shoe and clothing store

Application



Jewelry shop



Museum



Industry exhibition hall

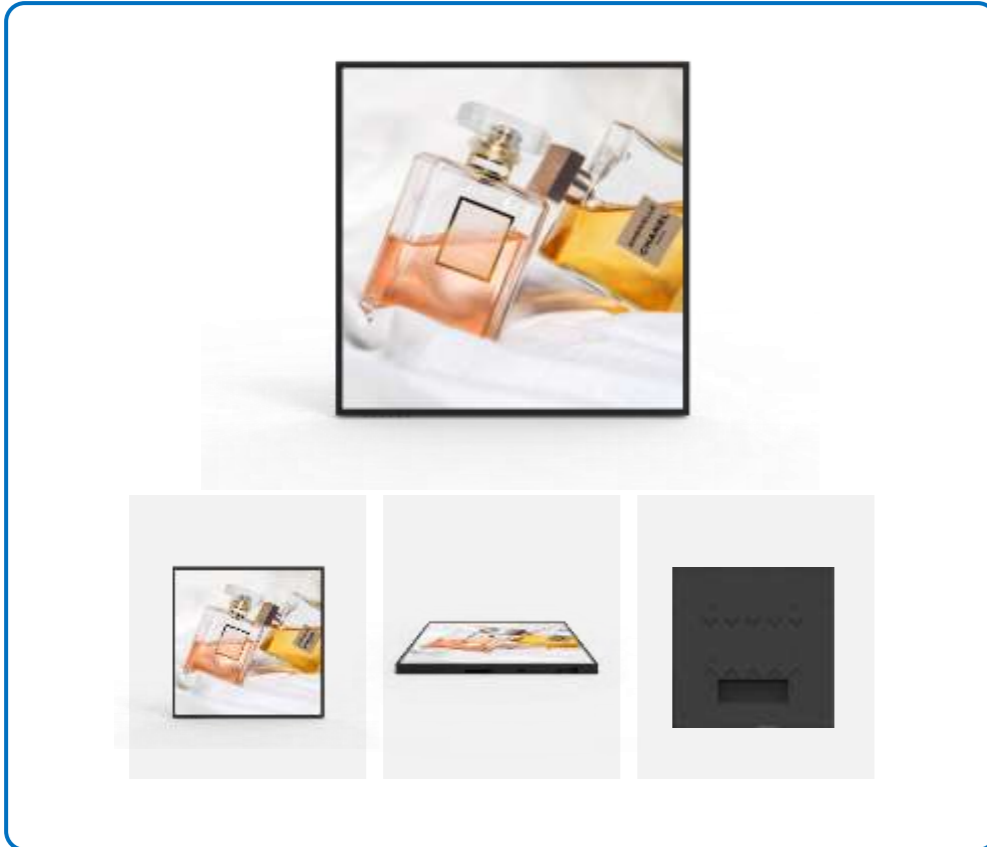


Bank



Vending machine

Complete Display Unit

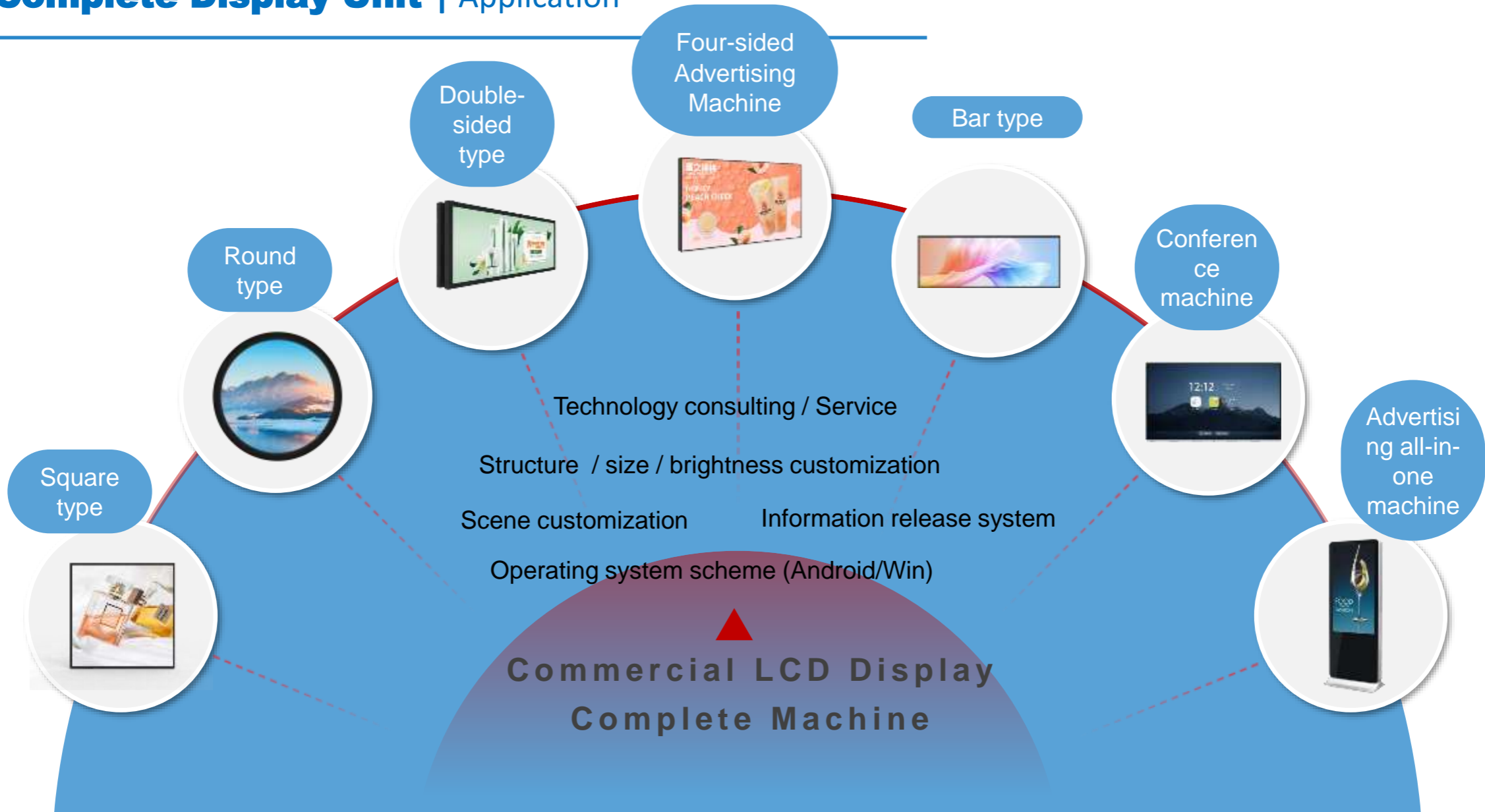


Square type LCD screen series

- ★ Support customization
- ★ Available for all products
- ★ Long life time
- ★ HDMI/Android OS

| Size | Resolution | I/O | AA | OD | Brightness | Top |
|------|------------|---------|-----------------|-------------------|------------|--------|
| 15 | 1024*768 | Android | 304.128*228.096 | 329.1*285.5*17.6 | 250 | -20-70 |
| 19.2 | 1920*360 | Android | 476.64*89.37 | 499*112.6*32 | 500 | 0-50 |
| 19.4 | 1920*510 | Android | 476.68*126.6 | 500*150*32 | 700 | 0-50 |
| 19.7 | 1920*624 | Android | 476.6*154.9 | 503*182.2*31.5 | 1000 | -20-85 |
| 21.5 | 1920*1080 | HDMI | 476.064*267.786 | 489.4*279.84*29.4 | 500 | 0-50 |
| 21.9 | 1920*712 | HDMI | 527.04*195.5 | 548.4*222.2*38 | 700 | 0-50 |
| 23.9 | 1920*360 | HDMI | 597.6*112 | 625.6*140*38 | 700 | 0-50 |
| 27.5 | 1920*137 | Android | 698.4*50 | 722.1*78.8*25 | 1000 | 0-50 |
| 29.6 | 1920*760 | HDMI | 698.4*276.5 | 735.5*309.95*45 | 2000 | 0-50 |
| 32 | 1920*1080 | Android | 698.6*394.5 | 752*446*36.8 | 1200 | 0-50 |
| 32 | 1920*1080 | HDMI | 698.4*392.85 | 732*431.3*85 | 4000 | 0-50 |
| 34.3 | 1856*1420 | HDMI | 690.9*529 | 723.9*562*87 | 1500 | 0-50 |
| 35 | 3840*446 | HDMI | 878.11*100.5 | 924*147*49.9 | 1000 | 0-50 |
| 36 | 3840*1080 | Android | 878.11*242.68 | 926*293*42 | 800 | 0-50 |
| 36.2 | 1920*540 | Android | 885.6*280.8 | 915.6*279.8*45.7 | 1500 | 0-50 |
| 38 | 1920*539 | HDMI | 919.3*258 | 987.06*307.17*78 | 700 | 0-50 |
| 38.5 | 1920*540 | Android | 940.896*264.63 | 967.9*296.26*24.9 | 450 | 0-50 |
| 43 | 1920*1080 | HDMI | 941.18*529.42 | 983.2*571.5*50 | 1000 | 0-50 |
| 43.5 | 3840*380 | HDMI | 1095.8*108 | 1214*147.8*55.2 | 1000 | 0-50 |
| 48 | 3840*540 | HDMI | 1209.6*170.1 | 1239*208*90 | 4000 | 0-50 |
| 49.5 | 1920*540 | Android | 1209.6*340.2 | 1239.6*370.2*45 | 800 | -20-70 |
| 55 | 1920*1080 | HDMI | 1209.6*680.4 | 1242.6*713.6*77.6 | 800 | 0-50 |
| 65 | 1920*1080 | HDMI | 1428.5*803.5 | 1466*848.1*127 | 2000 | 0-50 |

Complete Display Unit | Application





Shenzhen Rogin Electronics CO.,LTD

LCD WORLD LIMITED

Manufacturer of special kinds of LCD screen

01

Company Profile

02

Qualification

03

Products

04

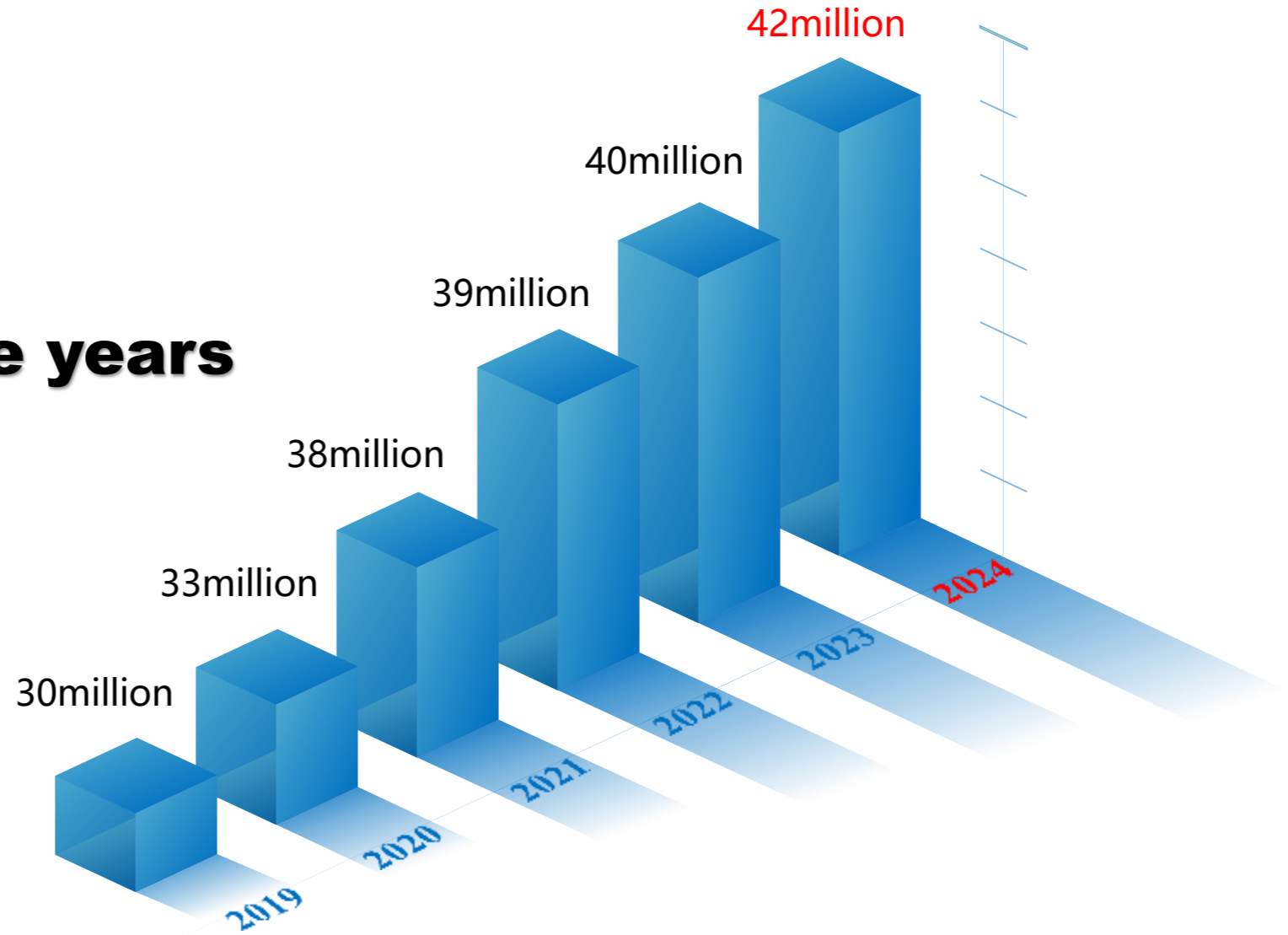
Development Strategy

INTEGRITY AND WIN-WIN
CONTINUE TO CREATE LONG-TERM VALUE FOR CUSTOMERS

04

Sales in recent five years

In USD



LONG-TERM GOALS

Become the first brand in the High brightness TFT display industry



Integrity and win-win

Continue To Create Long-term Value For Customers