

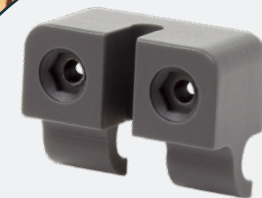


Transform a double-bar
mat fence into a noble
privacy screen –
at ONE CLICK!

MADE IN GERMANY



NEW
DESIGN
POSSIBILITIES...



... TO A
CLICK

TOE
EIN KLICK,
dann schick!



mehr-stabgitter-flair.de



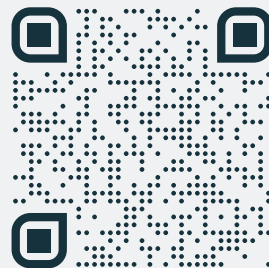
shop@mehr-stabgitter-flair.de



0174 • 355 17 75



STABGITTERZAUN



TOE
EIN KLICK,
dann schick!

THE INNOVATIVE
HOLDER FOR YOUR
DOUBLE-BAR-MAT-FENCE



Simple installation
of all types of
panels or signs



Available in
2 fence thicknesses:
6/5/6 and 8/6/8



In **3 colors** – similar to
the RAL fence colors

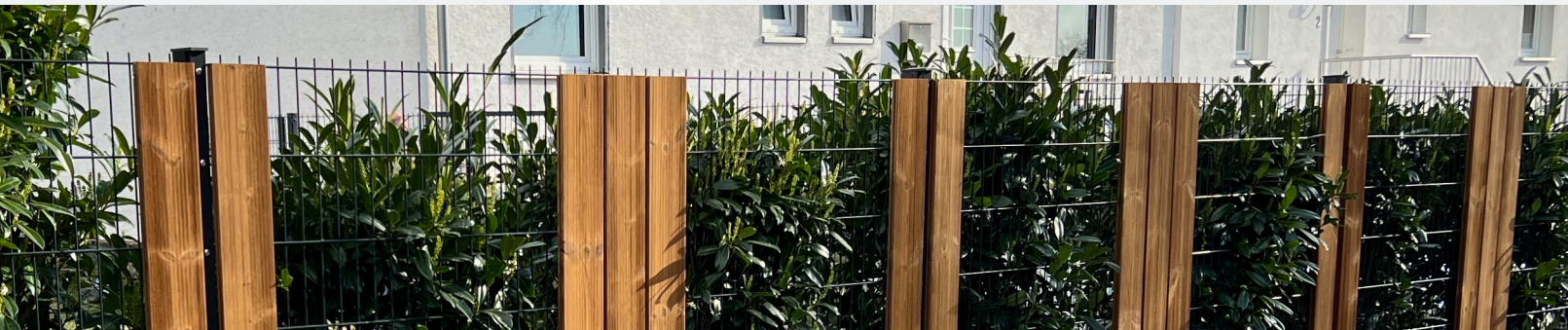


Reusable, cost-saving,
weather-resistant

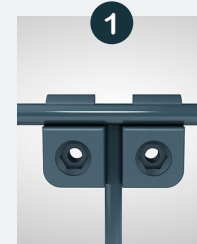
Double-bar mat fences are popular because of their durability, weather resistance and design. However, they are not opaque. For this reason, there are various films that are designed to provide privacy protection at a later date. Installing wood in any design, on the other hand, is not so easy.

Achieve an elegant, warm and natural-looking privacy screen of any height with your double-bar mat fence!

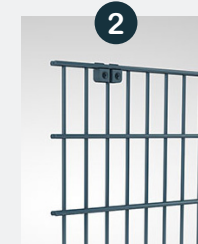
However, Tops now allows all owners of these fences an **easy way** to install their own privacy screen and **visually enhance** their fence. Individual privacy screens can now be screwed on in the form of standard wood or any other conceivable material (panel, plastic, WPC etc.) with a standard width of 14-15 cm without damaging the fence. Even a subsequent raising of the fence can be considered during installation.



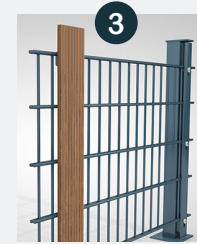
Easy installation of e.g. wooden panels in just a few simple steps



1 A mounting slot in the middle of the fence bracket has a width of 6 mm (or 5 mm) for the vertical mesh bars.



2 Tops can now be installed in the middle of any intersection point of the two bars within a double rod mesh.



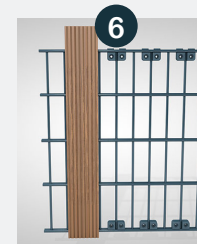
3 Tops is mainly designed for mounting privacy screen elements made of all conceivable materials (wood, panel, plastic, WPC, etc.) in double bar fences.



4 By snapping the fence rods into Tops, a firm, stable connection is created with the fence, on which a screen of your choice can then be placed.



5 The pre-drilled holes accommodate the screws, with the length of the screws depending on the thickness of the screen.



6 You can now gradually screw on additional elements without damaging the double-bar mat fence. This creates a stable and high-quality privacy screen quickly and easily.



A privacy screen constructed on the basis of a double-bar fence is more durable than a purely wooden privacy fence, whose posts are also made of wood and are subject to weathering together. With Tops, it will be sufficient to replace individual privacy screens in future.



Installing thin materials, such as advertising signs, has never been easier. Click the holders into at least four corners of the fence, hold the sign in front and drill through the holders at the back, insert the nuts into the holder and screw the screws through the sign from the front and tighten.

You can find detailed instructions at mehr-stabgitter-flair.de