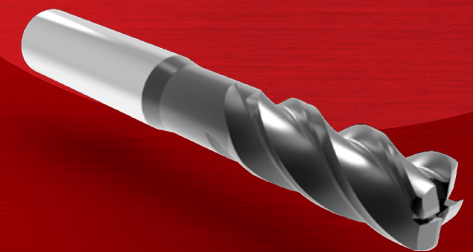
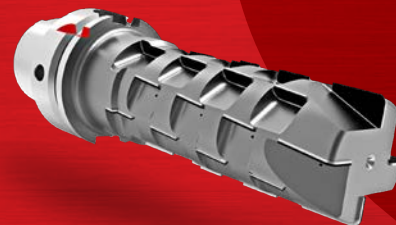
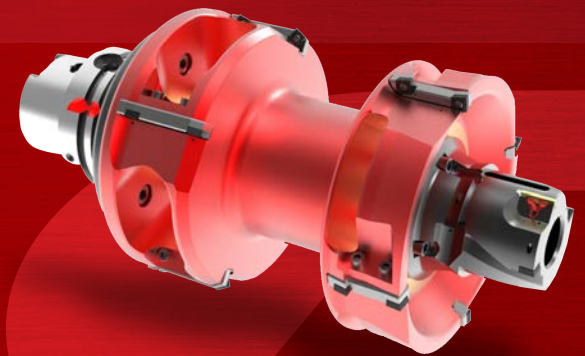
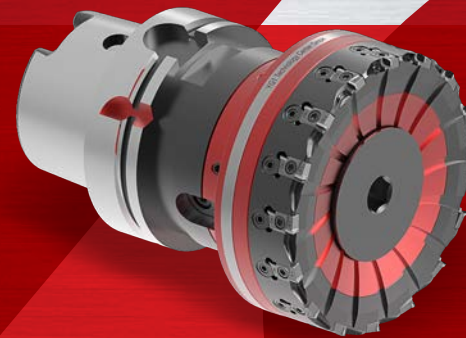




YG-1 Technology Center

*IF IT'S NOT PERFECT,  
IT'S NOT YG-1*



# *IF IT'S NOT PERFECT, IT'S NOT YG-1*

Together with talented employees and outstanding technology, YG-1 will continue to develop innovative tools and remain a company that sees the advantages and benefits of its customers as its top priority.

We would like to thank all our customers for their generous support and promise to move forward with consistent passion.



*Hokeun Song*

Founder and Chairman of YG-1  
CEO Hokeun Song

# MISSION AND CORE VALUES

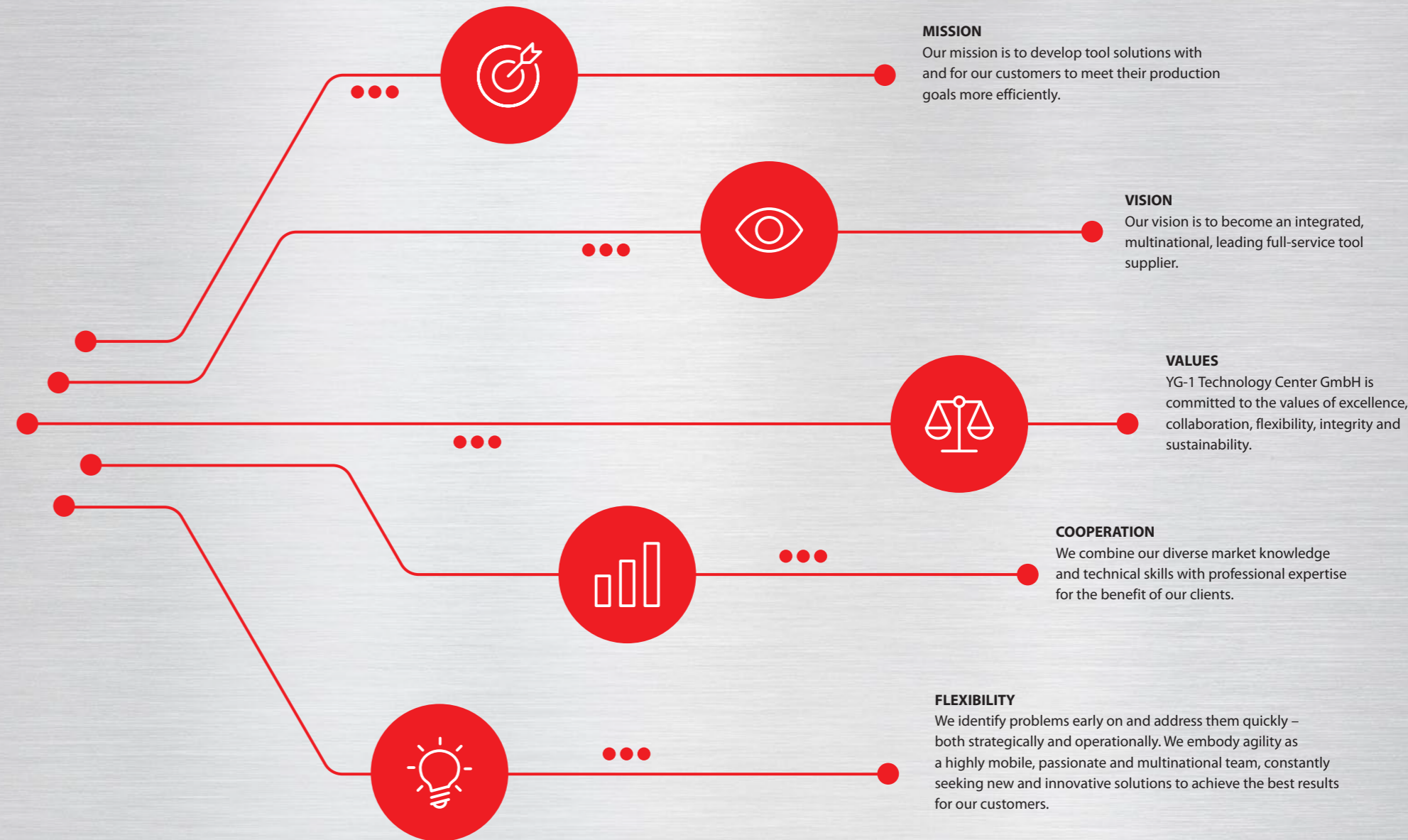
## Absolute precision down to the smallest detail.

Incorporating practical experience into machine concepts and machining strategies, coupled with convincing technical solutions – that is our passion!

Our self-image is based on partnership, trust, reliability and honesty. Shaping the creativity of each individual into a convincing whole and thus supporting our customers in their economic success – that is our goal. In reality, we have never really seen our customers just as customers. We see ourselves more as a technology partner who makes an important contribution to our customers success. We see every new task as a challenge and approach it with commitment and perfection.

### Excellence in everything we create.

We meet the highest standards in project planning, realisation and implementation. We embody excellence by gaining standards from innovation and exceeding our partners' expectations.



- Distribution company
- Production company



#### Headquarters in Incheon/Songdo – South Korea

YG-1 has its headquarters since December 2020 in the city of Songdo in South Korea. According to Chairman Hokeun Song, the move to the new office building was the first step of the YG-1 Group towards becoming a global complete tool solutions provider for the future. Songdo offers an optimal infrastructure for transport and logistics with its proximity to the international airport and the nearby Incheon seaport.



#### R&D CENTRE, South Korea

Right next to the headquarters, on a 4621 m<sup>2</sup> plot of land, is the new development centre building, which bears the name "Future Center". On the ground floor there is a testing ground equipped with a wide variety of machines for directly testing new developments.

## GLOBAL NETWORK

**YG-1 was founded by Hokeun Song in Korea in 1981.**

YG-1 is one of the leading companies worldwide in the production and distribution of tools. In South Korea, YG-1 is the largest company in the industry. Based on more than 38 years of experience and expertise, YG-1's product range is constantly expanding. Design, simulations, production and testing in the most advanced facilities in the industry.

Founded in

**1981**

More than

**5000**

employees

We export to

**75 countries**



**28**

production facilities  
across the globe

**4500**

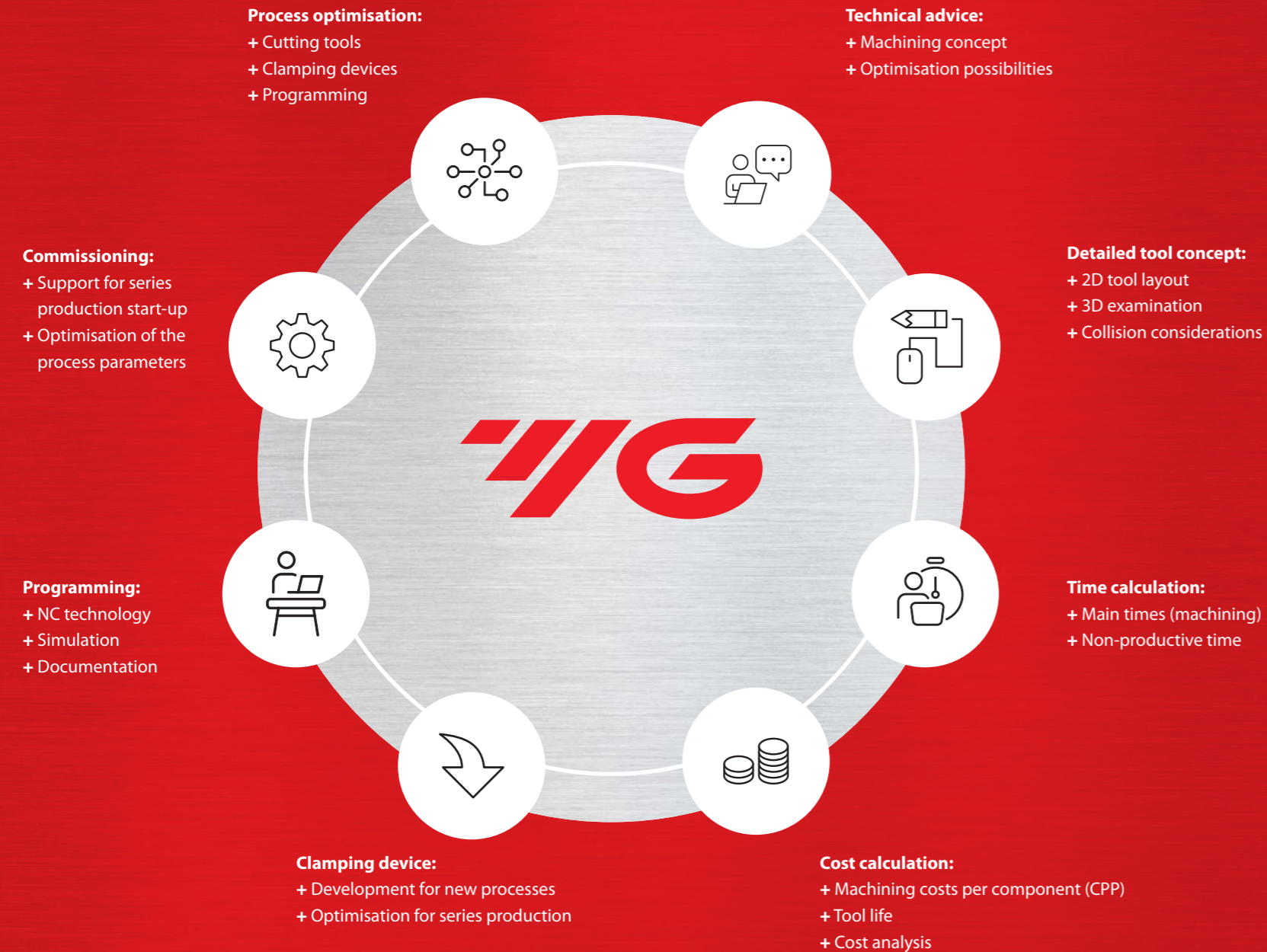
production  
machines

**27**  
subsidiaries

**70**

coating machines

# OUR SERVICE



# QUALITY IS OUR FIRST PRIORITY



## Quality means

that we treat the characteristic elements that are decisive for the component quality with the highest standards of care, precision and price-performance ratio for our customers.



## Quality starts

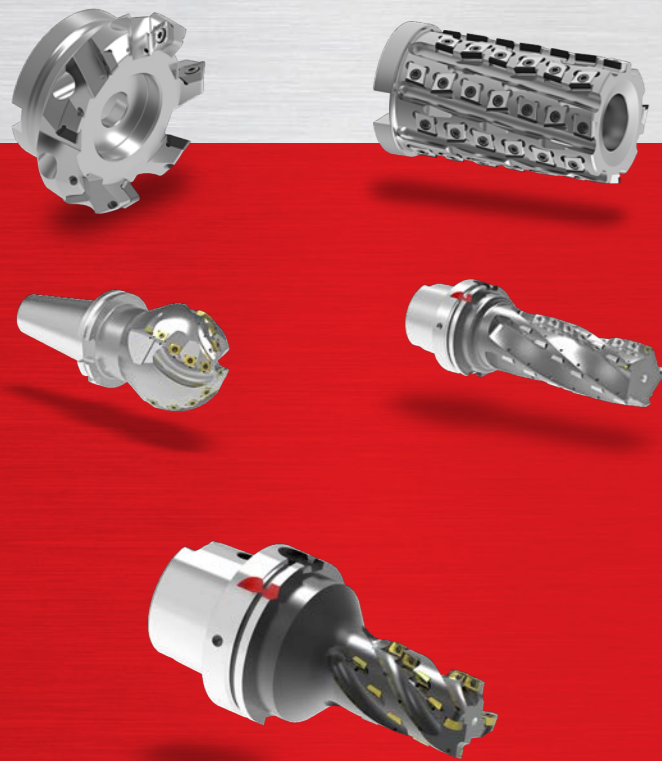
already with the selection of products and services from our suppliers. In addition to careful incoming goods inspections, we use close cooperation and comprehensive quality management to ensure that everything meets the high quality standards of our customers and ourselves right from the start.

Motivated employees who are always up to date with the latest technology thanks to training and qualification offers guarantee production results at the highest level.

## MILLING TOOLS

YG-1 offers ISO-based and customised milling systems with an excellent price-performance ratio.

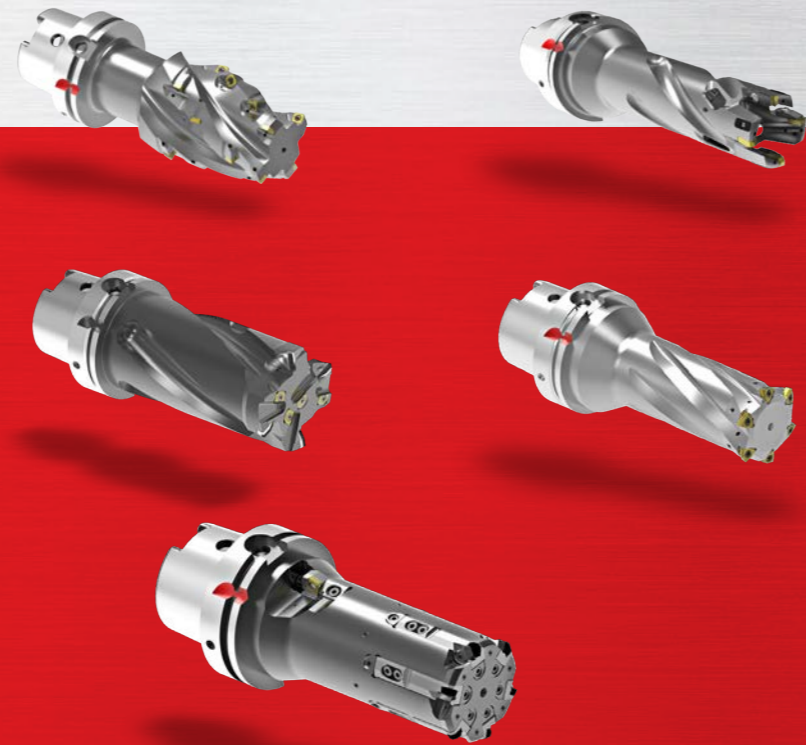
The tool design, cutting edge geometry and optimised coatings ensure significant increases in productivity.



## DRILLING TOOLS

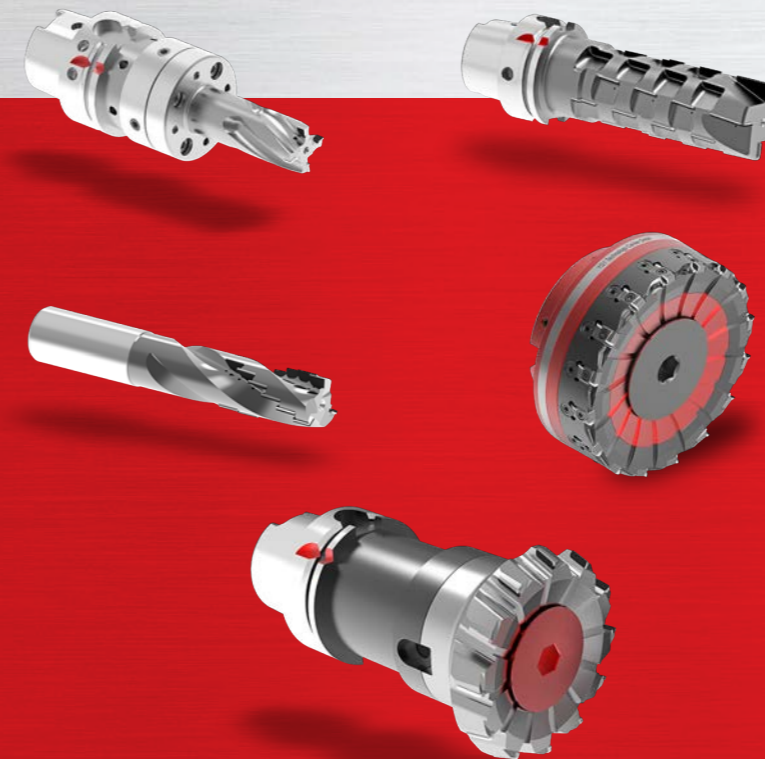
YG-1 offers standard drilling tools up to 30xD as well as customised solutions for implementing customer-specific manufacturing tasks.

We meet individual requirements with material-specific cutting edge geometries and adapted coatings.



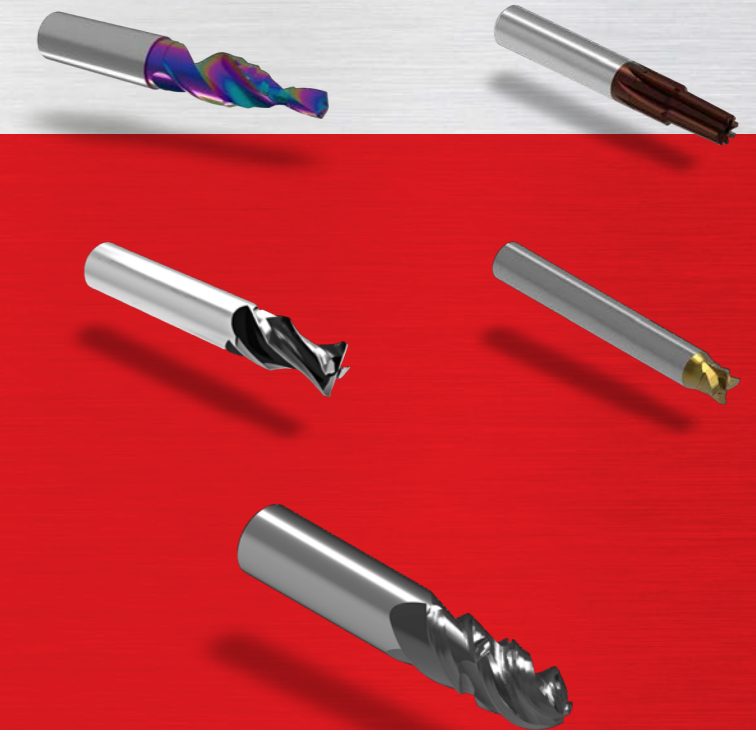
## PCD AND CBN TOOLS

The application possibilities of these special cutting materials and thus tool solutions have grown enormously in recent years. YG-1 is able to realise customised tools according to specific requirements.



## CARBIDE TOOLS

The geometry and coating adapted to the application enable exceptional performance and longer tool life with outstanding productivity and process reliability.



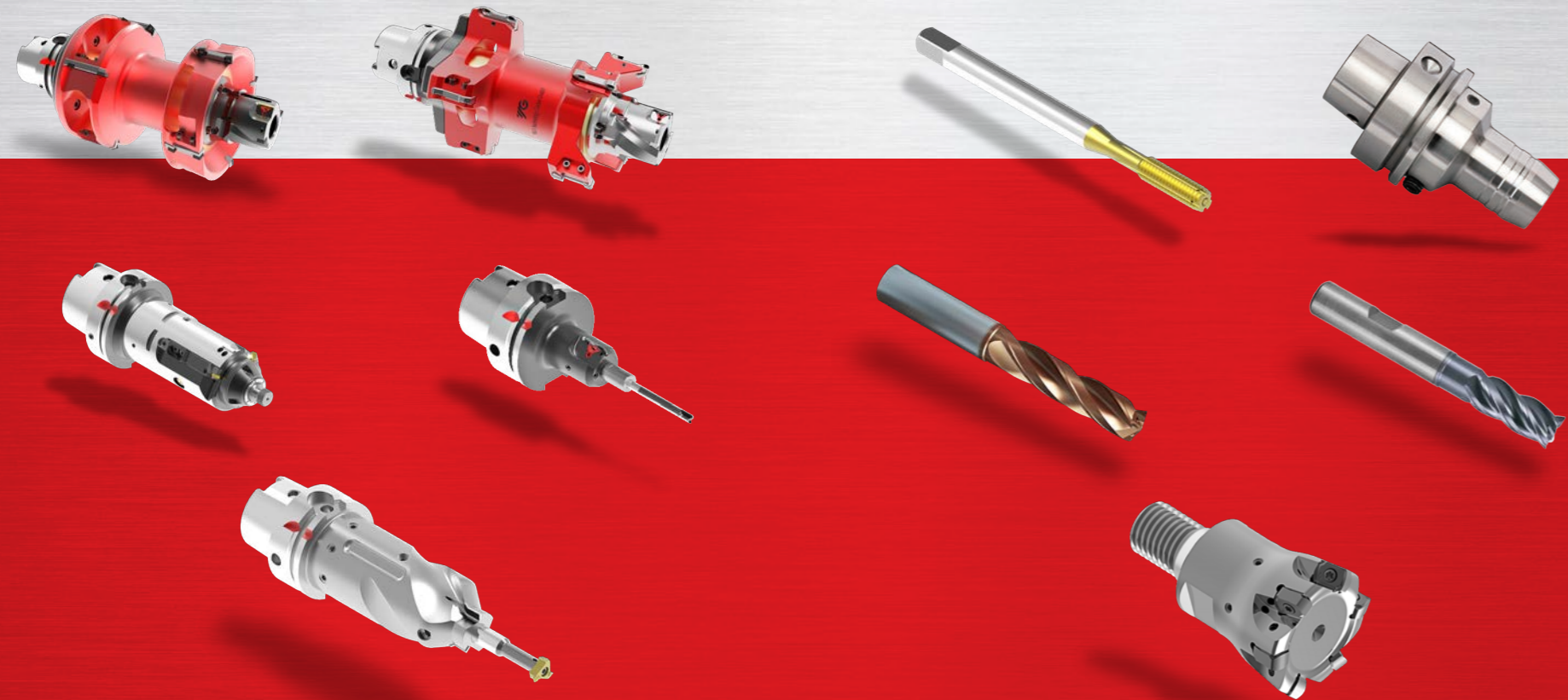
## FINE BORING TOOLS

Finishing is the last machining step for many components and therefore has the highest requirements for precision.

YG-1 offers special solutions in this area for implementing the most complex machining tasks.

## STANDARD TOOLS

Based on more than 38 years of experience and expertise, YG-1 offers a standard product portfolio with more than 50.000 tools in the areas of milling, drilling, turning, threading and the respective adaption tools.



## DID YOU NOT FIND A SUITABLE TOOL FOR YOUR REQUIREMENTS?

Our team consists of specialists with many years of experience in design, development and tool manufacturing. In direct cooperation with our customers, we work out and develop efficient tool concepts according to the latest market and customer requirements.



Our service team is looking forward to your enquiry!  
Phone: +49 (0)7364 95597 0 or  
[info@yg1-techcenter.de](mailto:info@yg1-techcenter.de)

## AREAS OF APPLICATION

### MEDICAL TECHNOLOGY

#### Highest standards for quality and safety

Our modern tools and technologies are specially produced for individual applications. Highest quality is indispensable in the medical sector to provide patients with the best possible care. The difficult machining of medical implants, with very high technical demands and solutions, plays a very important role here. We carefully implement the exact specifications and work with difficult to machine materials thanks to continuous further development and improvement of our tools. Our YG-1 Group develops special carbide grades for these customised products, which are extremely hard, tough, fracture-proof and temperature-resistant, both in standard and special applications.

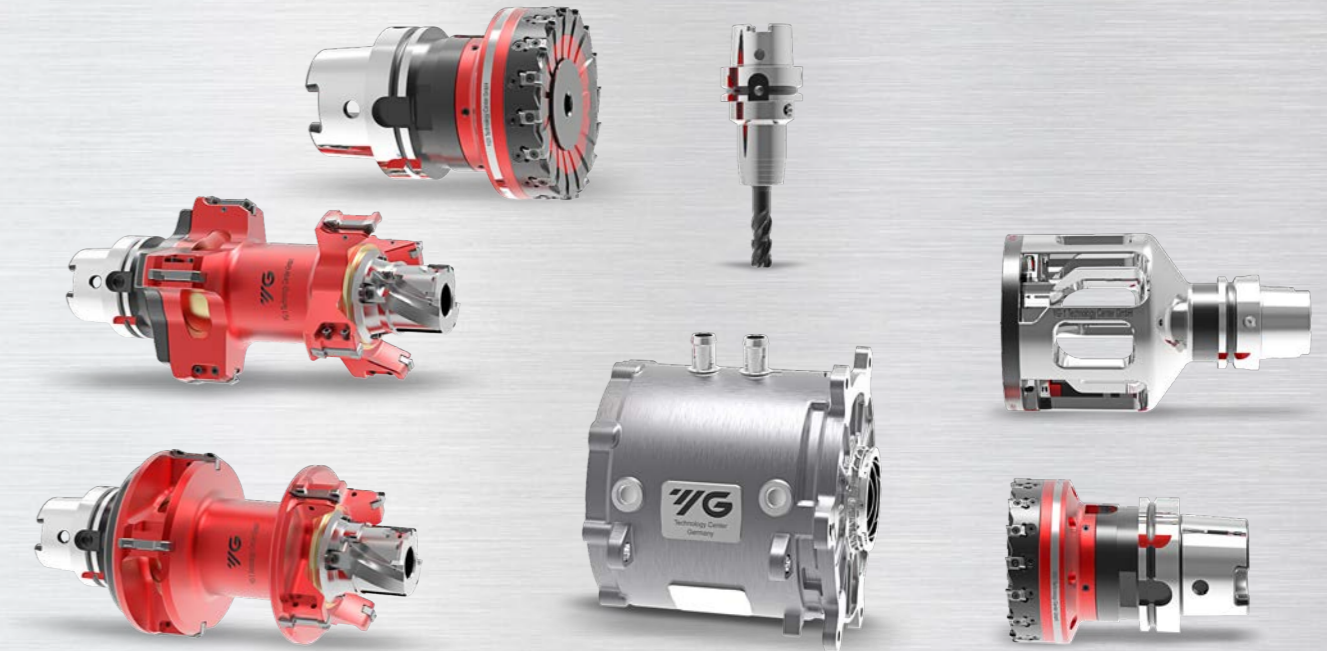
Example: Knee endoprosthesis



### E-MOBILITY

#### Development and technology

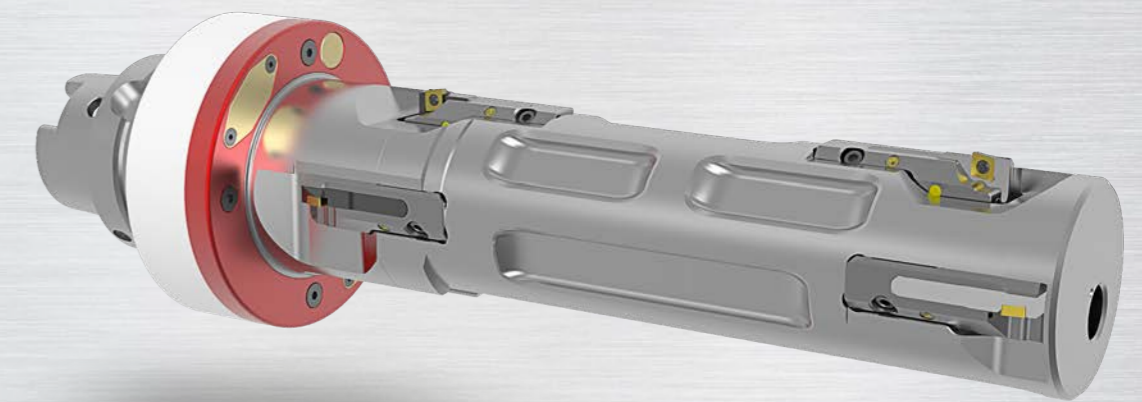
YG-1 offers different tool concepts for machining components such as stator housings, battery trays or even motor housings for e-bikes. Carbide or PCD tools with specially adapted cutting edge geometries are usually used for this purpose. Depending on the requirements, the tools can be vibration-damped or designed in lightweight construction to enable machining.



### ELTRON 4.0

#### Industry 4.0 – new development

With our new development, YG-1 Technology Center now also offers tools with radio-controlled adjustable cartridges. To this end, a wide variety of options have been developed for each production technology. The tool can be precisely readjusted electronically in the micrometre range without machine downtime and removal. Conventional adjustment errors are completely avoided in this way.



Award-winning technology – Eltron 4.0 won the Innovation Award at the CIMT in China in the Metal Working Magazine!



**YG-1 Technology Center GmbH**

Am Märzenbuckel 8

73447 Oberkochen, Germany

Tel.: +49 (0)7364 95597 0

[info@yg1-techcenter.de](mailto:info@yg1-techcenter.de)

[www.yg1-techcenter.de](http://www.yg1-techcenter.de)

