

# Efficient GMP-Washer.

Small parts washer PDC Serie.

Container inside washers VCD Serie.

All in one washer PCC Serie.

# Cleaning Solutions for All Demands

## PDC Series – Equipment, Tableting Tool, Container and Drum Cleaning Devices

- cGMP compliant cutting-edge hygienic design
- 1 or 2- door execution
- horizontal or vertical sliding doors
- service compartment right or laterally reversed left
- ergonomic loading height
- multicolor illuminated chamber
- stainless steel machine paneling (304 / 1.4301), grinded, grain 320

Type	Width mm	Depth mm	Height mm	Volume liters
PDC600	650	650	700	296
PDC800	850	800	950	646
PDC1200	1250	1200	950	1425
PDC1600	1470	1200	950	1676



## VCD Modular Container Cleaning System

- manual or automatic docking of container
- inflatable seal
- container specific connector
- Inside cleaning via single-pass rinsing directly into drain or with recirculation
- direct dosing of detergents
- outside cleaning manually
- container drying with filtered hot air

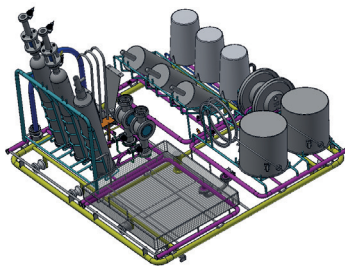
## PCC Series – Container, IBC, Drum and small parts Cleaning Devices

- cGMP compliant cutting-edge hygienic design
- 1 or 2- door execution
- horizontal or vertical sliding doors
- container outside and inside cleaning
- automatic valve and lid handling
- effective capacity from W 1500 x D 1500 x H 1500 mm up to W 1850 x D 2300 x H 2500 mm
- loading height from floor level up to 800 mm
- flexible tailor made layout



## Superior washing process

- low water consumption thanks to recirculation; optional buffer tanks for simultaneous preparation of water and single-pass washing
- same pipework for washing, rinsing, drying – perfect cleanliness of equipment
- monitored spray rotors in washing chamber
- interior container cleaning with vertically moving cleaning lance
- dosing of detergent directly into media inlet – shorter batch time; advantageous for objects to be washed
- detergent canister in enclosed technical compartment – better access; less risk of corrosion
- heat exchanger for hot water / air – no tank heater needed; no cross contamination
- heating by steam (up to 90kW at 8 bar) or electrics (up to 60kW)
- hot air drying (up to 1260 m³/h and 20'000Pa); pre-filter F9 with main filter HEPA H13 with differential pressure controller
- powerful washing pump up to 15kW, flow rate max 80 m³/h (at 3.5 bar)

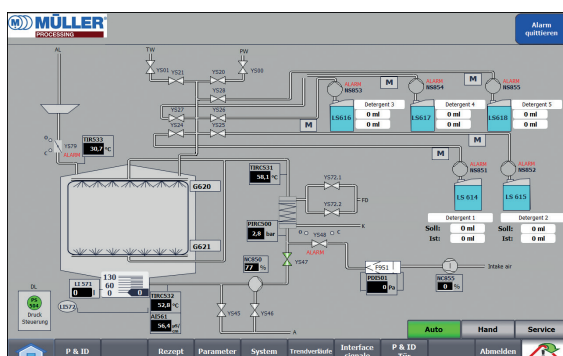
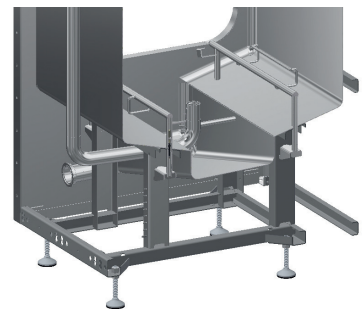


## Custom-made wash racks

- spray nozzles on washing carts
- connection by automatic water hydraulics coupling

## Mechanical design

- wash chamber design for perfect cleanliness of equipment
- high washing loads up to 750kg
- radial door seal for perfect cleaning of machine interior
- high quality fully drainable aseptic diaphragm block valves
- sensors according EHEDG for tank liquid level, pump pressure, conductivity, temperature
- sampling valves for tank and media inlets



## Controls

- PLC Siemens or Allen-Bradley
- touch panel 12" or 15"
- audit trail
- dynamic visualization of P&ID
- program selection and parametrization
- extended recipe management with history
- batch report, OPC server
- GMP compliant documentation

## Maintenance, service and retrofit

Customers are provided with regular and comprehensive service for all facilities. This secures the investment costs and allows highest possible facility availability.

Experienced service technicians, who are regularly trained directly at our facilities, ensure the high service availability. All work is subject to ISO 9001.

### Worldwide factory service offer

- assembly, installation and commissioning
- briefing and training of the customer's operating and technical staff
- IQ / OQ
- contact person for the selection, ordering and delivery of spare parts
- maintenance / repair / modernization
- maintenance contracts
- renovation, modification and extension of existing facilities, also third-party

### YOUR CUSTOMER BENEFITS AT A GLANCE

- highest possible plant availability
- avoidance of supply bottlenecks
- investment value retention
- maintaining the security level of the installations
- transparent costs



## Müller Group. From Packaging to Processing.



UN-approved packaging made of  
mild steel, stainless steel and fibre.



Plastic packaging and  
technical moldings.

### Müller AG Processing

Tramstrasse 20  
4142 Münchenstein  
Switzerland  
T +41 61 416 12 12  
F +41 61 416 12 13  
processing@mueller-group.com



Storage, transport and process  
containers out of stainless steel.



Integrated handling systems, GMP  
washers and intralogistic systems.