

# *The art of die casting*



□ DECORATIVE  
FURNITURE  
FITTINGS



ÇEBİ has been manufacturing Zamak (zinc die casting) injection, Plastic injection and Aluminum parts since its foundation in 1979. The company utilizes its own mould design and production units to give life to its original designs as well as to the ones specifically requested by the customers.

In addition to the main services it provides for the Furniture industry like handle, door knob, hanger, coat button and table leg design and manufacturing, ÇEBİ also offers design and parts manufacturing services to a variety of industries such as White Goods, Automotive, Electric-Electronic and textile.

ÇEBİ manufactures Zamak, Aluminum and Plastic raw materials with unique designs and with a know-how in die casting that spans 35 years. The next step in the manufacturing process is to polish these items through the ABB and KUKA robotic technologies within the plant and then, to put them through various surfacing processes in Special electrolytic bathing facilities before turning them into decorative products.

For the products with Aluminum and Zamak raw materials, ÇEBİ uses lean engineering techniques when carrying out forming (cold shaping), bending, perforating and threading processes.

ÇEBİ applies 5s in all units with lean engineering techniques in all phases of Production. ÇEBİ's manufacturing processes in world standards have been certified by LGA and TSE for production and products.

The company has been shipping products throughout the world from Turkey since 1979 with exports accounting for 51 percent of its production.



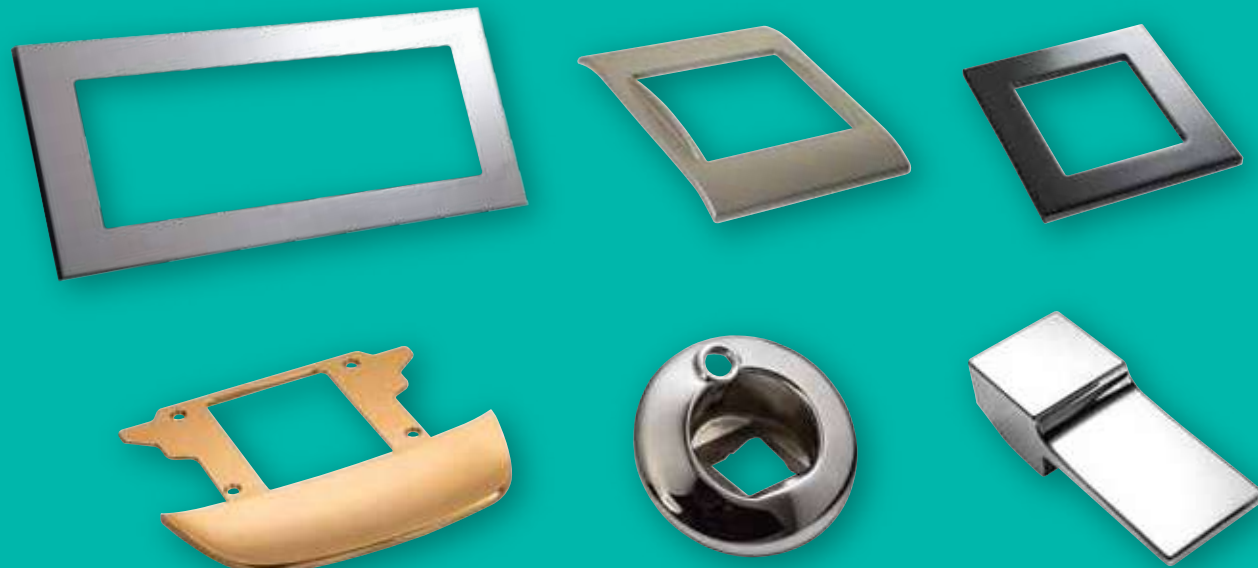


>> stronger



### QUALITY AND EFFICIENCY SINCE 1979

With annual raw material consumption that reaches 1,800 tons in Zamak, 500 tons in Aluminum and 80 tons in Plastic, ÇEBİ provides the most efficient and economic solutions for all industries through precise manufacturing techniques in a 25,000 square meter indoor area.





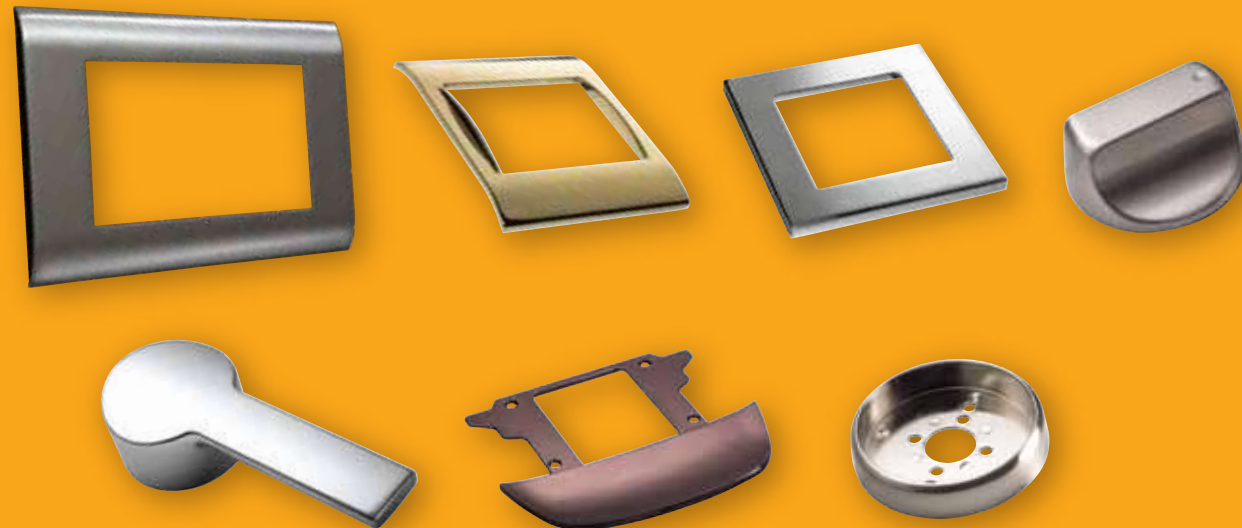
>> hard worker



### ***R&D and TEAM WORK***

ÇEBİ performs manufacturing operations in a 25,000 square meter indoor plant with a personnel of 35 white collar and over 300 blue collar employees who have captured a team spirit and have set complete customer satisfaction as their main strategy in all of their team efforts.

The company implements sustainable R&D efforts through the Research and Development Department that has been established within the organization, while the Industrial Design Department conceptualizes its own original designs. ÇEBİ offers special design services to its customers with a capability of creating three-dimensional models of all its designs through 3D Printing.







>> faster

**cebi®**

DECORATIVE  
FURNITURE  
FITTINGS



### ***POLISHING***

ÇEBİ has put in place the polishing robotization project with collaboration from the ABB and the KUKA Brands and as a result, Robots are used in all polishing processes.

### ***SECTORS***

- Furniture,
- Automotive,
- Electric - Electronic,
- White Goods,
- Textile,
- Hand tools,
- Small house appliances.

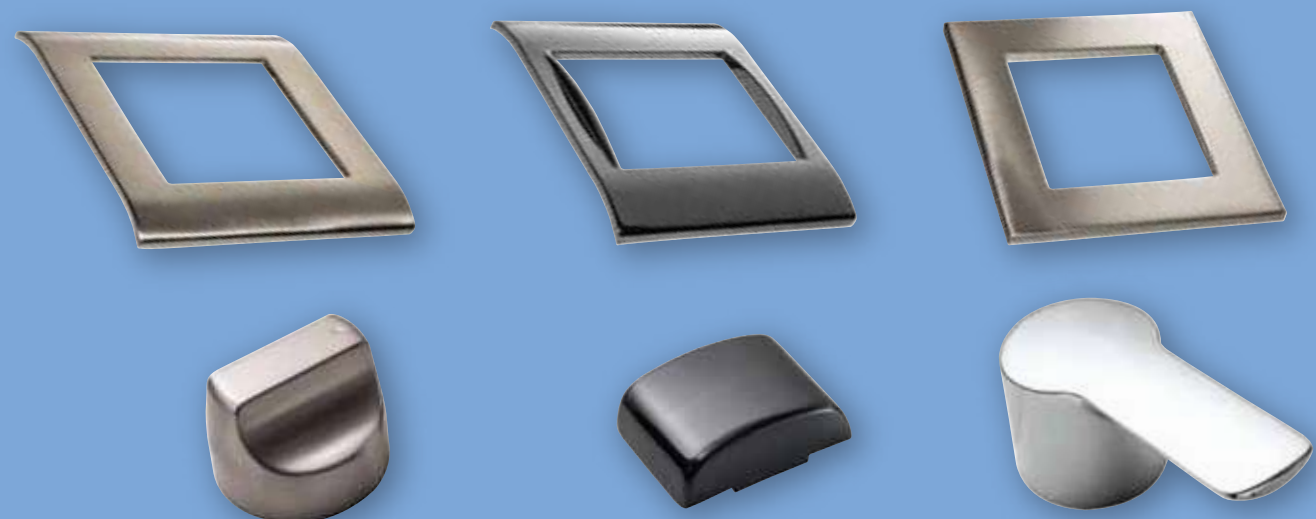




>> accurate

cebi®

DECORATIVE  
FURNITURE  
FITTINGS



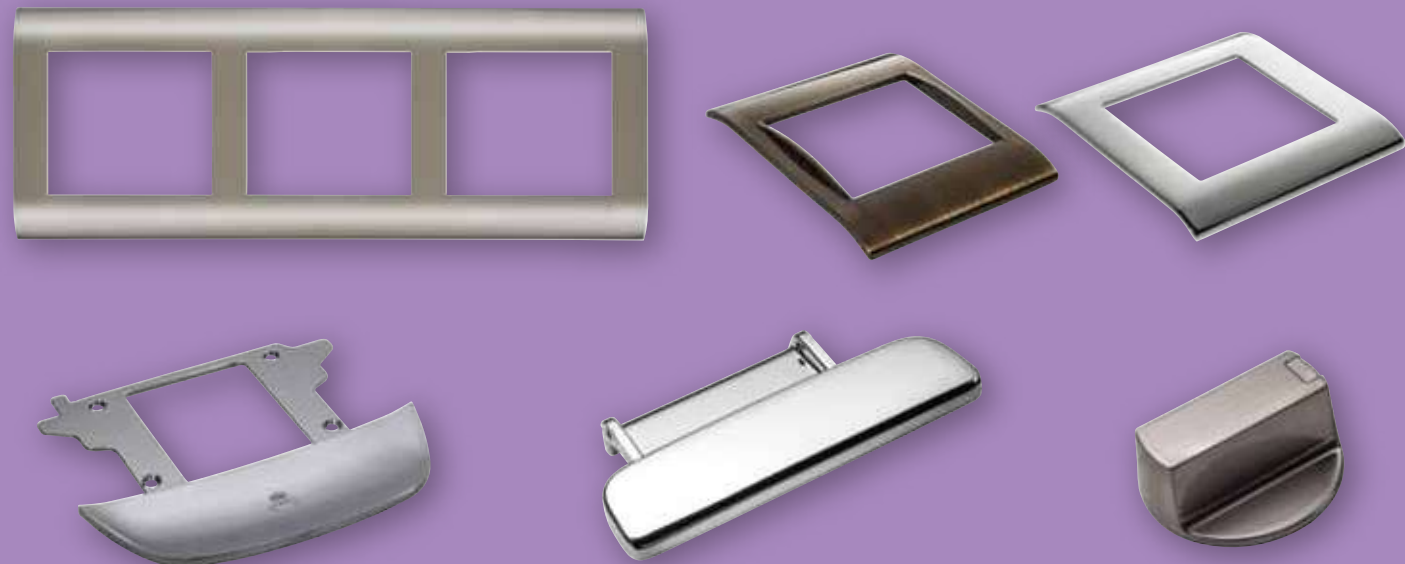
### PLASTIC PRODUCTION UNIT

ÇEBİ provides services to all industries with a diverse range of plastic raw materials, producing ABS, PP, PC, PA and plastic parts by using the Injection molding that is designed and manufactured by the company within the current production capacity. Products are electroplated through special surface processes to accomplish a variety of decorative surfaces.

State-of-the-art electrical ENGEL as well as KRAUSS MAFFEI brand injection machines are used in the plastic production unit.



>> perfectionist



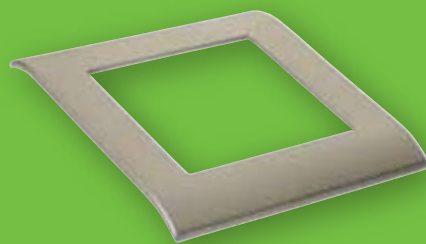
## TOOLING

ÇEBİ does its own mould designs, creating three-dimensional CAD designs by using Pro-Engineer and Rhinoceros programs.

Machining Strategist program is used for CAM at ÇEBİ where the most advanced CNC mould production machines are used to manufacture the tools.



>> systematic



### **FROM DOOR HANDLES TO POWER TOOLS**

ÇEBİ has accomplished a sustainable quality approach in its production units through constant improvement and development programs since 1979.

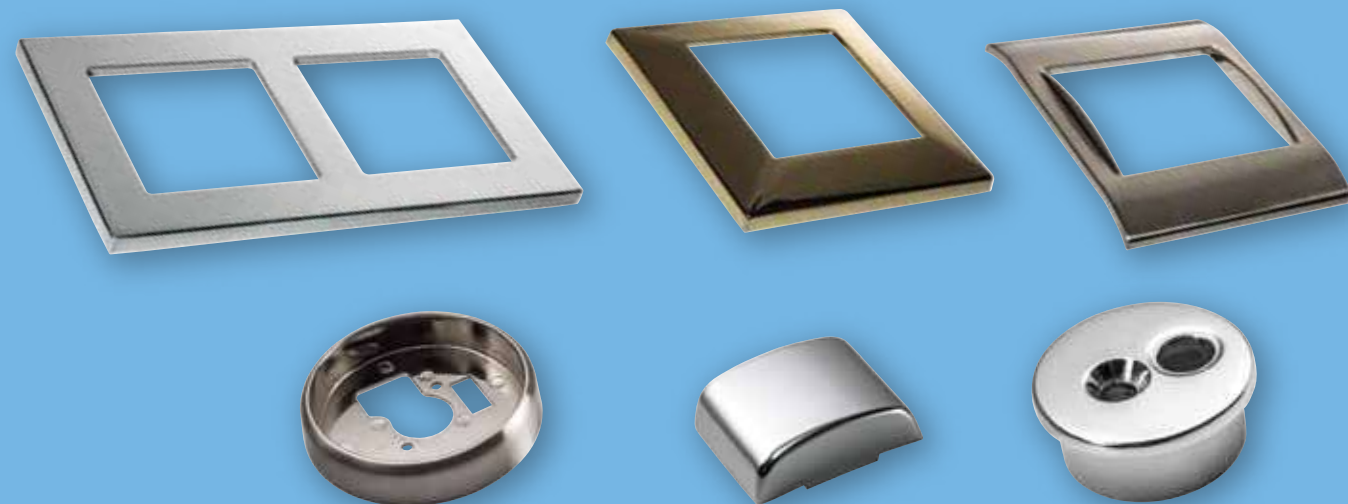
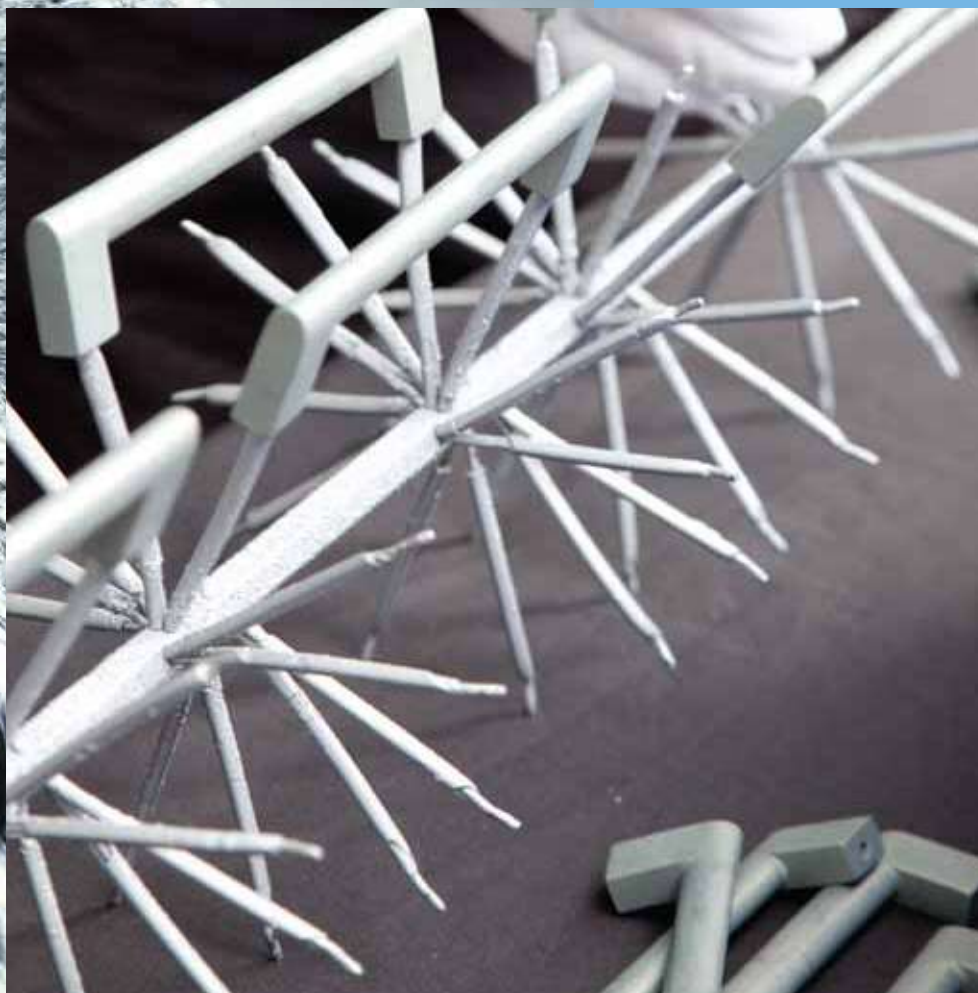
Since beginning production of door hinges for the furniture industry in 1979, the company has achieved constant improvement and has evolved into a company that manufactures decorative products for all sectors today.

ÇEBİ has found a place among the most reputable companies in the world as a manufacturer of high decorative products. It has a considerable share in the global market as well as being the market leader in its field in Turkey.





>> efficient



### **360°STRUCTURE**

- Design,
- Moulding,
- Die Casting,
- Quality,
- Lean Engineering,
- Injection,
- Mechanical processing,
- Polishing,
- Paint,
- Coating,
- Packaging,
- Warehousing,
- Delivery,
- Customer Service,
- Sales and After-Sales services,



## ABOUT ÇEBİ

**Foundation:** 1979

**Headquarters:** ISTANBUL-TURKEY

**Factory:** ISTANBUL-TURKEY

**Field of Production:** Zinc Die Casting, Plastic injection, Aluminum parts processing,

**Indoor Area:** 25,000 square meter

**Number of white collar employees:** 35

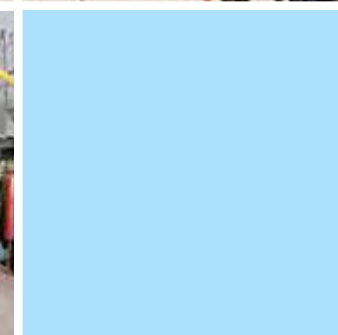
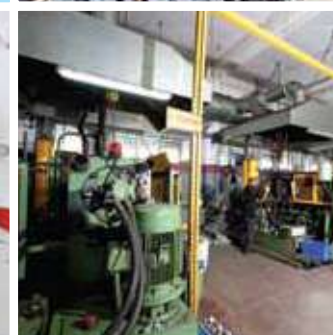
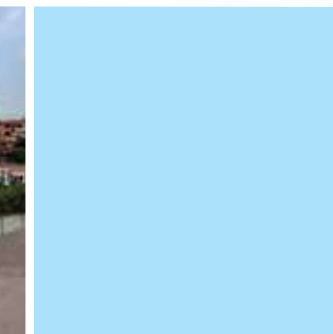
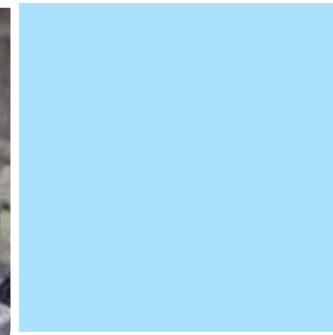
**Number of blue collar employees:** Over 300

**Annual raw material consumption:** 1,800 tons of Zamak, 5,500 tons of Aluminum and 80 tons of Plastic.



**cebi®**

□ DECORATIVE  
FURNITURE  
FITTINGS







LGA QualTest GmbH

# Quality Certificate



DECORATIVE  
FURNITURE  
FITTINGS

**TSEK** **TÜRK STANDARDLARI ENSTİTÜSÜ**  
**KRİTERE UYGUNLUK BELGESİ**  
**TURKISH STANDARDS INSTITUTION**  
**CERTIFICATE OF CONFORMANCE TO CRITERIA**

Markanın Tanımı: Description of the Mark  
**TSEK** → **→ → → → →**

BELGE NUMARASI: 14.11.2021/EN 14331  
BELGENİN İLK VERİŞİ TARİHİ: 14.11.2021  
BELGENİN SON GEÇERLİLİK TARİHİ: 11.11.2023  
BELGE SAHİBİ KURULUŞUN ADI: ÇEBİ KILIT VE MOBİLYA AKSESUARLARI SANAYİ TİCARİET ANONİM ŞİRKETİ  
BELGE SAHİBİ KURULUŞUN ADRESİ: AKOLUNBAHAR SAĞI MAH. İSLAMOĞLU CAD. NO: 18 YENİDOĞANSAMANCILIKTEPE İSTANBUL  
ÜRETİM YERİ ADI: ÇEBİ KILIT VE MOBİLYA AKSESUARLARI SANAYİ TİCARİET ANONİM ŞİRKETİ  
ÜRETİM YERİ ADRESİ: AKOLUNBAHAR SAĞI MAH. İSLAMOĞLU CAD. NO: 18 YENİDOĞANSAMANCILIKTEPE İSTANBUL  
TESCİLLİ BELGE BAŞLIĞI: ÇEBİ KILIT VE MOBİLYA AKSESUARLARI SANAYİ TİCARİET ANONİM ŞİRKETİ  
İLGİLİ BELGELENDİRME KRİTERİ: EN 14331  
BELGE KAPISINDA: ÇEBİ KILIT VE MOBİLYA AKSESUARLARI SANAYİ TİCARİET ANONİM ŞİRKETİ

TSE HİZMETİNE 2021 MODELİ KULLANILAN VE AYKURLARI  
"MOBİLYA KULLANILAN TUTANAK VE AYKURLARI"  
Aydınlatma, Zanaat ve Plastik Malzemeler Markası

**TSEK** **TÜRK STANDARDLARI ENSTİTÜSÜ**  
**KRİTERE UYGUNLUK BELGESİ**  
**TURKISH STANDARDS INSTITUTION**  
**CERTIFICATE OF CONFORMANCE TO CRITERIA**

Markanın Tanımı: Description of the Mark  
**TSEK** → **→ → → → →**

BELGE NUMARASI: 14.11.2021/EN 14331  
BELGENİN İLK VERİŞİ TARİHİ: 14.11.2021  
BELGENİN SON GEÇERLİLİK TARİHİ: 11.11.2023  
BELGE SAHİBİ KURULUŞUN ADI: ÇEBİ KILIT VE MOBİLYA AKSESUARLARI SANAYİ TİCARİET ANONİM ŞİRKETİ  
BELGE SAHİBİ KURULUŞUN ADRESİ: AKOLUNBAHAR SAĞI MAH. İSLAMOĞLU CAD. NO: 18 YENİDOĞANSAMANCILIKTEPE İSTANBUL  
ÜRETİM YERİ ADI: ÇEBİ KILIT VE MOBİLYA AKSESUARLARI SANAYİ TİCARİET ANONİM ŞİRKETİ  
ÜRETİM YERİ ADRESİ: AKOLUNBAHAR SAĞI MAH. İSLAMOĞLU CAD. NO: 18 YENİDOĞANSAMANCILIKTEPE İSTANBUL  
TESCİLLİ BELGE BAŞLIĞI: ÇEBİ KILIT VE MOBİLYA AKSESUARLARI SANAYİ TİCARİET ANONİM ŞİRKETİ  
İLGİLİ BELGELENDİRME KRİTERİ: EN 14331  
BELGE KAPISINDA: ÇEBİ KILIT VE MOBİLYA AKSESUARLARI SANAYİ TİCARİET ANONİM ŞİRKETİ

TSE HİZMETİNE 2021 MODELİ KULLANILAN VE AYKURLARI  
"MOBİLYA KULLANILAN TUTANAK VE AYKURLARI"  
Aydınlatma, Zanaat ve Plastik Malzemeler Markası

**LGA** **QualTest GmbH**

**Quality Certificate**

**Qualitäts-Zertifikat**

**mit Bestätigung**  
**geprüfte Qualität**

The LGA QualTest GmbH  
A member of the LGA\* - Group  
(LGA - a public corporation)  
certifies herewith that the company:

**ÇEBİ Kilit ve Mobilya Aksesuarları Sanayi Ticaret A.Ş.**  
Merve Mah. Akabe Cad. No. 2  
Yenidoğan, Samandıra, İstanbul  
Turkey

have their product:  
**Furniture Handles, Furniture Knobs, Accessories,  
Wardrobe Hooks, Rear Panel Binders**

tested, checked and permanently supervised within the scope of a surveillance agreement.

Quality Characteristics	Test / Points
Form / Assembly	Working inside and out for use
Material of surface	Material in the finished or rough
Resistance to impact and penetration	Acc. to DIN 52 153 (T1) and DIN 52 153 (T2)
Resistance to corrosion	Acc. to DIN 52 153 (T1) and DIN 52 153 (T2)
Quality assurance	Acc. to DIN 52 153 (T1) and DIN 52 153 (T2)

Nürnberg, 04.10.2021, modified 23.12.2021  
Validated 2021-04-18

Quality Certificate No. 1936  
LGA-Tag: 1936/1937-2021-1495

**LGA** **QualTest**  
**Qualitäts-Zertifikat**

Dr.-Ing. W. Schmitt  
Head of the Product Testing Institute

**TSE** **TÜRK STANDARDLARI ENSTİTÜSÜ**  
**KRİTERE UYGUNLUK BELGESİ**  
**TURKISH STANDARDS INSTITUTION**  
**CERTIFICATE OF CONFORMITY TO TURKISH STANDARDS**

Markanın Tanımı: Description of the Mark  
**TSE** → **→ → → → →**

BELGE NUMARASI: 14.11.2021/EN 14331  
BELGENİN İLK VERİŞİ TARİHİ: 14.11.2021  
BELGENİN SON GEÇERLİLİK TARİHİ: 11.11.2023  
BELGE SAHİBİ KURULUŞUN ADI: ÇEBİ KILIT VE MOBİLYA AKSESUARLARI SANAYİ TİCARİET ANONİM ŞİRKETİ  
BELGE SAHİBİ KURULUŞUN ADRESİ: AKOLUNBAHAR SAĞI MAH. İSLAMOĞLU CAD. NO: 18 YENİDOĞANSAMANCILIKTEPE İSTANBUL  
ÜRETİM YERİ ADI: ÇEBİ KILIT VE MOBİLYA AKSESUARLARI SANAYİ TİCARİET ANONİM ŞİRKETİ  
ÜRETİM YERİ ADRESİ: AKOLUNBAHAR SAĞI MAH. İSLAMOĞLU CAD. NO: 18 YENİDOĞANSAMANCILIKTEPE İSTANBUL  
TESCİLLİ BELGE BAŞLIĞI: ÇEBİ KILIT VE MOBİLYA AKSESUARLARI SANAYİ TİCARİET ANONİM ŞİRKETİ  
İLGİLİ BELGELENDİRME KRİTERİ: EN 14331  
BELGE KAPISINDA: ÇEBİ KILIT VE MOBİLYA AKSESUARLARI SANAYİ TİCARİET ANONİM ŞİRKETİ

TSE HİZMETİNE 2021 MODELİ KULLANILAN VE AYKURLARI  
"MOBİLYA KULLANILAN TUTANAK VE AYKURLARI"  
Aydınlatma, Zanaat ve Plastik Malzemeler Markası

**TSE** **TÜRK STANDARDLARI ENSTİTÜSÜ**  
**KRİTERE UYGUNLUK BELGESİ**  
**TURKISH STANDARDS INSTITUTION**  
**CERTIFICATE OF CONFORMITY TO TURKISH STANDARDS**

Markanın Tanımı: Description of the Mark  
**TSE** → **→ → → → →**

BELGE NUMARASI: 14.11.2021/EN 14331  
BELGENİN İLK VERİŞİ TARİHİ: 14.11.2021  
BELGENİN SON GEÇERLİLİK TARİHİ: 11.11.2023  
BELGE SAHİBİ KURULUŞUN ADI: ÇEBİ KILIT VE MOBİLYA AKSESUARLARI SANAYİ TİCARİET ANONİM ŞİRKETİ  
BELGE SAHİBİ KURULUŞUN ADRESİ: AKOLUNBAHAR SAĞI MAH. İSLAMOĞLU CAD. NO: 18 YENİDOĞANSAMANCILIKTEPE İSTANBUL  
ÜRETİM YERİ ADI: ÇEBİ KILIT VE MOBİLYA AKSESUARLARI SANAYİ TİCARİET ANONİM ŞİRKETİ  
ÜRETİM YERİ ADRESİ: AKOLUNBAHAR SAĞI MAH. İSLAMOĞLU CAD. NO: 18 YENİDOĞANSAMANCILIKTEPE İSTANBUL  
TESCİLLİ BELGE BAŞLIĞI: ÇEBİ KILIT VE MOBİLYA AKSESUARLARI SANAYİ TİCARİET ANONİM ŞİRKETİ  
İLGİLİ BELGELENDİRME KRİTERİ: EN 14331  
BELGE KAPISINDA: ÇEBİ KILIT VE MOBİLYA AKSESUARLARI SANAYİ TİCARİET ANONİM ŞİRKETİ

TSE HİZMETİNE 2021 MODELİ KULLANILAN VE AYKURLARI  
"MOBİLYA KULLANILAN TUTANAK VE AYKURLARI"  
Aydınlatma, Zanaat ve Plastik Malzemeler Markası



RIGHT TIME  
RIGHT PLACE

**cebi**®

□ DECORATIVE  
FURNITURE  
FITTINGS

