



CMC TRIGGERS

100% MADE IN THE GREAT STATE OF TEXAS





OUR MISSION

TO HONOR GOD AND WHAT HE HAS DONE FOR US. WE DO THIS BY APPLYING THE SKILL SETS HE HAS GIVEN EACH ONE OF US. TO BUILD THE BEST PRODUCTS POSSIBLE AND TAKE CARE OF OUR CUSTOMERS AT THE HIGHEST LEVEL IS HOW WE DO IT.

A black and white photograph of a black metal safe. The safe has a textured surface and features the words "CMC" and "TRIGGERS" embossed on its front. In the center, there is a circular emblem containing a silhouette of a handgun. Two red straps with square ends are wrapped around the safe, and a metal clasp is visible at the bottom.

AK

GLOCK®

A red and black trigger gun, likely a paintball marker, is shown at an angle. The red body features the 'CMC' logo in large, stylized letters on the left and 'TRIGGERS' in a similar font on the right. A central black circular port is visible. The black trigger assembly is prominent at the bottom.

GLOCK®

AR-15/10

UPPER

LOWER

PIN SETS

M-LOK®

TRIGGERS

CMC AR-15/10 DROP-IN TRIGGERS



The CMC Triggers' Original Drop-In AR-15 Trigger features a clean, crisp trigger release with predetermined pull weights, which are crucial elements to any trigger group, allowing the shooter's performance to meet the firearm's potential.

CMC Triggers' critical sear engagement surfaces have a proprietary machining process that renders superior surface finish and dimensional control. As compared to our competition, the techniques used to establish a 1-2 RMS surface finish (compared to a mirror which is 0 RMS) out perform manufacturing processes such as EDMing, which leaves a pitty 32 RMS. This makes our sear engagement overlap up to 6-8 times greater than our competitors providing a much safer trigger with enhanced reliability.

As part of our commitment to our customers, we are also proud to use American-made materials and manufacture all of our products in Fort Worth, Texas. All of our products are also backed by our Lifetime Warranty and 100% Satisfaction Guarantee.



FEATURES:

- Ultra-crisp trigger with a glass-smooth break
- Minimal lock time and a positive trigger reset
- Hand assembled and hand tested
- Fits MIL-SPEC AR-15 and AR-10 style rifles
- Totally self-contained one-piece assembly
- Comes with CMC Anti-Walk Pin Set
- Made from 8620 Alloy Steel and S7 Tool Steel with machined tolerances of $\pm .001$ "
- Available in configurations for multiple pull weights
- Available in Flat, Curved, and CCT™ Trigger Bows

CMC SINGLE STAGE TRIGGERS

CMC TWO STAGE TRIGGERS

CMC's "Classic" Curved Drop-in Trigger Group is for the shooter who wants a traditional feel. CMC's patented "Signature" Flat Drop-in Trigger Group allows the shooter's finger to rest naturally on the shoe ensuring every pull is the same as the one before it. CMC's CCT™ (Combat Curve Trigger) offers the best of both.



CMC Triggers' AR-15 Drop-in Triggers have always yielded exceptional trigger pull dynamics for our tens of thousands of satisfied customers. We pride ourselves on both outstanding products and customer service.



CMC's Two Stage Drop-in Trigger module provides all the advantages of a fine, match-grade trigger without the hand-fitting and trial-and-error.

CURVED SINGLE STAGE:

PULL	PART #
3.5lb	91501
4.5lb	92501
5.5lb	93501
6.5lb	94501

FLAT SINGLE STAGE:

PULL	PART #
3.5lb	91503
4.5lb	92503
5.5lb	93503
6.5lb	94503

CCT™ SINGLE STAGE:

PULL	PART #
3.5lb	91701
4.5lb	92701
5.5lb	93701
6.5lb	94701

CURVED TWO STAGE:

PULL	PART #
1lb/3lb	91502
2lb/2lb	92502
2lb/3lb	96502
2lb/4lb	93502
2lb/5lb	94502

FLAT TWO STAGE:

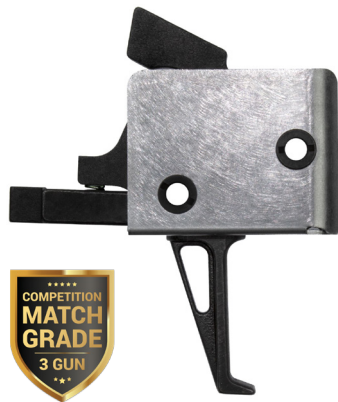
PULL	PART #
1lb/3lb	91504
2lb/2lb	92504
2lb/3lb	96504
2lb/4lb	93504
2lb/5lb	94504

CCT™ TWO STAGE:

PULL	PART #
1lb/3lb	91702
2lb/2lb	92702
2lb/3lb	96702
2lb/4lb	93702
2lb/5lb	94702

TRIGGERS

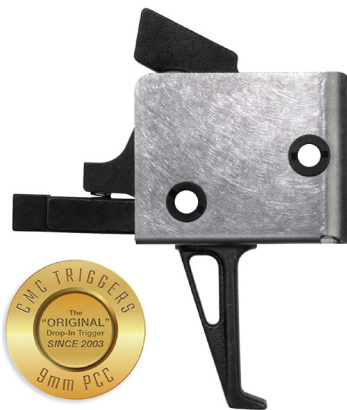
CMC COMPETITION TRIGGERS



Answering the demand from the nation's top 3 Gun competitive shooters for a lighter trigger, the new CMC Competition Drop-in Trigger Group is the perfect solution.

This competition match grade trigger has almost no take-up and an extremely short reset to make shooting fast and easy.

CMC 9MM PCC TRIGGERS



Due to the rise in popularity of Pistol Caliber Carbine (PCC) rifles, CMC Triggers developed and launched the CMC 9mm PCC Drop-in Trigger.

The trigger's hammer geometry dimensions have been modified to work with all the various manufacturer bolt carriers designed for the 9mm platform.

CURVED COMPETITION:

PULL	PART #
2.5lb	90501

FLAT COMPETITION:

PULL	PART #
2.5lb	90503

CCT™ COMPETITION:

PULL	PART #
2.5lb	90701

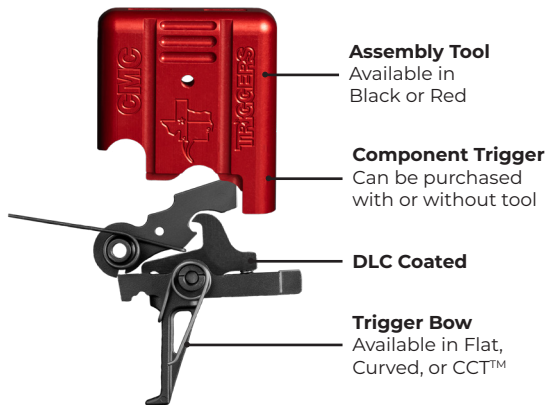
CURVED 9MM PCC:

PULL	PART #
3.5lb	95501

FLAT 9MM PCC:

PULL	PART #
3.5lb	95503

CMC AR-15/10 COMPONENT TRIGGERS WITH PATENTED ASSEMBLY TOOL



CMC Triggers' innovative Component Trigger features the same quality materials and design as our OG Drop-in Triggers but without the drop-in housing. These high-performance AR-15 triggers are simple to install with our ground-breaking patented assembly tool. The trigger has a smooth and consistent feel with an exceptionally crisp break and positive reset. Available configurations for small pin, multiple pull weights, and Flat, Curved, or CCT™ bows.

FEATURES:

- Match grade trigger
- Ultra-crisp trigger and glass-smooth break
- Positive trigger reset
- DLC coated
- Patented assembly tool simplifies the installation process
- Made from 8620 Alloy Steel & S7 Tool Steel with machined tolerances of +/- .001"

CURVED COMPONENT:

PULL	PART #
2.5lb	50501
3.5lb	51501
4.5lb	52501
5.5lb	53501
6.5lb	54501

FLAT COMPONENT:

PULL	PART #
2.5lb	50503
3.5lb	51503
4.5lb	52503
5.5lb	53503
6.5lb	54503

CCT™ COMPONENT:

PULL	PART #
2.5lb	50701
3.5lb	51701
4.5lb	52701
5.5lb	53701
6.5lb	54701

CURVED + BLK TOOL:

PULL	PART #
2.5lb	50501AT
3.5lb	51501AT
4.5lb	52501AT
5.5lb	53501AT
6.5lb	54501AT

FLAT + BLK TOOL:

PULL	PART #
2.5lb	50503AT
3.5lb	51503AT
4.5lb	52503AT
5.5lb	53503AT
6.5lb	54503AT

CCT™ + BLK TOOL:

PULL	PART #
2.5lb	50701AT
3.5lb	51701AT
4.5lb	52701AT
5.5lb	53701AT
6.5lb	54701AT

TRIGGERS

CMC AR-15/10 FULL AUTO SELECT FIRE TRIGGERS



FEATURES:

- Full-Auto Compatible
- Available in Single Stage and Two Stage configurations
- Flat, curved, and CCT™ trigger bow options
- Ultra-crisp trigger and glass-smooth break
- Minimal lock time and positive trigger reset
- Hand assembled and hand tested
- Includes CMC Anti-Walk Pin Set
- Fits MIL-SPEC AR-15 and AR-10 style rifles
- 8620 Alloy Steel and S7 Tool Steel with machined tolerances of +/- .001"
- Multi-patented one-piece drop-in assembly installs in minutes
- Encased in an aluminum box with an anodized coating for increased rigidity to withstand full-auto rate of fire



CURVED SINGLE STAGE:

PULL	PART #
6.5lb	94529

FLAT SINGLE STAGE:

PULL	PART #
6.5lb	94528

CCT™ SINGLE STAGE:

PULL	PART #
6.5lb	94730

CURVED TWO STAGE:

PULL	PART #
2lb/4lb	94519

FLAT TWO STAGE:

PULL	PART #
2lb/4lb	94518

CMC AK-47 TRIGGERS



CMC's Drop-in AK-47 Trigger Group is the ultimate upgrade for your AK-47 variant. With its 100% modular, CNC-machined, and easy-to-install design.

CMC offers four trigger bow versions, the traditional AK style, the curved AR style, CMC's patented Flat Trigger style, and the "Hybrid" Combat Curved Trigger (CCT™) Style.

CMC GLOCK® DROP-IN TRIGGERS



The CMC Glock® replacement trigger is a drop-in unit that improves the trigger's overall performance. The replacement trigger offers an improved trigger feel without compromising the pistol's renowned reliability or safety.

CCT™ AK 2.0:

PULL	PART #
2.5lb	47407
3.5lb	47507
4.5lb	47607

CURVED AK 2.0:

PULL	PART #
2.5lb	47401
3.5lb	47501
4.5lb	47601

FLAT AK 2.0:

PULL	PART #
2.5lb	47403
3.5lb	47503
4.5lb	47603

TRAD'L AK 2.0:

PULL	PART #
2.5lb	47405
3.5lb	47505
4.5lb	47605

GLOCK® GEN 1-3:

CALIBER	PART #
.380	71402
9mm	71501 & 71502
.40cal	71601
.45	71901 & 71902

GLOCK® GEN 4:

CALIBER	PART #
9mm	71701
.40cal	71801
.45	72001

GLOCK® GEN 5:

CALIBER	PART #
9mm	71702



BARRELS

CMC BARRELS

CMC GLOCK® MATCH PRECISION BARRELS



CMC's Match Precision Barrels are the ultimate upgrade drop-in barrels for Gen 3 & 4 Glock® 17, 19, and 34 Pistols.

Match Grade barrels are precision machined from Certified, DFARS compliant; pre-hardened 416R premium grade stainless steel, to extremely tight tolerances and exacting details. 416R stainless steel is recognized for its corrosion resistance, machinability and high tensile strength; it is the industry standard for premium Match Grade barrel manufacturing.

FEATURES:

- Straight fluted
- User friendly drop-in, no gunsmith required
- Double honed to produce the smoothest bore possible with a max RA of 12
- SAAMI, Match Grade spec chambers, precision cut and finished to a maximum RA of 16
- 6 grooves, cut rifled to create consistent 1:10 twist
- Enhanced slide fit and lock up for improved accuracy
- Rated for +P ammo use
- Available in stainless, bronze TiCN, and black DLC

GLOCK® 17 FLUTED BARRELS:

THREAD	FINISH	PART #
THREADED	BLACK DLC	75511
NON	BLACK DLC	75512
THREADED	BRONZE TiCN	75513
NON	BRONZE TiCN	75514
THREADED	STAINLESS	75515
NON	STAINLESS	75516

GLOCK® 19 FLUTED BARRELS:

THREAD	FINISH	PART #
THREADED	BLACK DLC	75521
NON	BLACK DLC	75522
THREADED	BRONZE TiCN	75523
NON	BRONZE TiCN	75524
THREADED	STAINLESS	75525
NON	STAINLESS	75526

GLOCK® 34 FLUTED BARRELS:

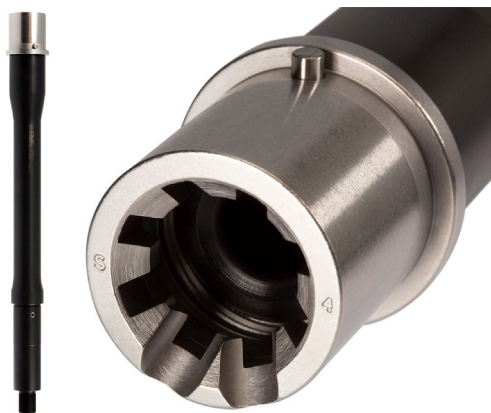
THREAD	FINISH	PART #
NON	BLACK DLC	75517
NON	BRONZE TiCN	75518
NON	STAINLESS	75519

"Glock" is a federally registered trademark of Glock, Inc. and is one of many trademarks owned by Glock, Inc. or Glock Ges.m.b.H. CMC Triggers is not affiliated with nor endorsed by Glock, Inc. or Glock Ges.m.b.H.

BARRELS

CMC BARRELS

CMC AR-15 5.56, 1:7, BARRELS



CMC's AR-15 barrels are made from 4150 Chrome Moly Vanadium, coated in H&M Blacknitride™ for increased wear resistance, chambered in 5.56 NATO ammo.

CMC incorporated input received from military, law enforcement and civilian shooters into the engineering of their AR15 barrels to accommodate modern-day shooting requirements. Every barrel is precision, instrument-inspected for absolute straightness and air gauged for maximum uniformity, yielding the highest accuracy possible.

FEATURES:

- 1:7" twist rate
- M4 feed ramps for reliability
- Air Gauged tested for consistency
- 1/2"x28 thread pattern to fit standard AR-15 muzzle devices
- 11° match crown for increased accuracy
- bottom dimple for easy gas block install and alignment

CMC AR-15 BARRELS:

LENGTH

Pistol Length Gas, 7.5"
Carbine Length Gas, 10.5"
Rifle Length Gas, 16"

PART

CMC-BBL-556-001
CMC-BBL-556-002
CMC-BBL-556-003

You may use this barrel with a lower receiver that is a Registered SBR, Machine Gun, or Pistol. Possession of this barrel, along with a Non-NFA lower receiver, is prohibited, except when installed on a Pistol configuration firearm.



PARTS

CMC BOLT CARRIER GROUPS

CMC Triggers' Enhanced Bolt Carrier Group was designed for shooters who demand superior performance weapon components in the heart of their firearm. CMC proudly manufactures the highest quality firearms components in the industry and utilizes high-quality gas rings and springs in our bolt assemblies.

The CMC enhanced carrier features a sand cut to allow debris to pass through. The bolt carrier group exceeds MIL-spec requirements. The external surfaces are CNC ground after heat treatment for a precision fit. The three gas ports on the side aids in slowing down the cycle speed of the bolt optimizing it for suppressor use.



STANDARD BCG FEATURES:

- Enlarged Forward Ports
- Optimized for Suppressor Use
- Hardened 4340 Cam Pin
- MIL-Spec 8740 Steel Firing Pin
- MPI and HPT tested
- MIL-Spec Extractor Spring & O-ring
- 556, 223, & 300 BO Compatible

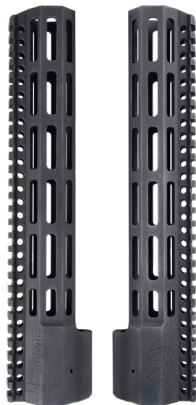
BOLT CARRIER GROUPS:

CALIBER	FINISH	PART #
AR-15 5.56/223/300 BO	Nitride	81631
AR-15 5.56/223/300 BO	DLC	81637
AR-10 .308/6.5CM	Nitride	81633
AR-15 6mm ARC	Nitride	81635

ENHANCED BCG FEATURES:

- New enhanced DLC-coated BCG is a fully upgraded version of CMC's other BCGs. Diamond-Like Carbon coatings are the hardest, most durable available.
- Dual ejector bolt head
- 5 coil extra power extractor spring
- Extra power bolt ejector springs
- Crane Spec o-ring
- Optimized for hard-use applications

CMC WEDGELOCK HAND GUARDS



Upgrade your AR-15 build with our premium AR-15 Hand Guard, manufactured in-house in Texas and designed for both performance and versatility. Available in a range of lengths—7", 9.5", 10.5", 11.5", 13", and 15"—this hand guard is perfect for any shooting style or setup, whether you prefer a compact configuration or a full-length top rail for enhanced accuracy and control.

Crafted from durable 6061-T6 aluminum, our hand guard offers exceptional strength while remaining lightweight, ensuring it won't add unnecessary bulk to your firearm. The Class III, Type 2 hard anodized finish provides superior corrosion resistance and improved wear characteristics, keeping your hand guard looking great and performing reliably even in demanding environments.

FEATURES:

- Lengths: 7", 9.5", 10.5", 11.5", 13", 15"
- State-of-the-art M-LOK® attachment system
- Innovative wedgelock mounting system provides a secure, low-profile mounting solution that enhances stability, reducing movement under recoil.
- Indexing pin is built into the design for compatibility with a wide range of receivers, simplifying installation and ensuring a perfect fit
- Crafted from durable 6061-T6 aluminum
- Class III, type 2 hard anodized

AR-15 HAND GUARDS:

LENGTH	PART #	LENGTH	PART #
7"	51007BLK	11.5"	51011BLK
9.5"	51009BLK	13"	51013BLK
10.5"	51010BLK	15"	51015BLK

Manufactured in-house with American materials and packed and shipped right from our warehouse in Fort Worth, Texas!

PARTS

CMC NITRIDE COATED GAS TUBES



Precision machined from 304 Stainless Steel, CMC Triggers' AR-15/AR-10 gas tubes have an extremely durable nitride finish that increases corrosion resistance, wear resistance, fatigue strength and cosmetic appeal while ensuring consistent gas flow to help your rifle cycle properly.

FEATURES:

- Available in rifle length, intermediate length, mid length, carbine length, and pistol length
- Includes gas tube roll pin
- Stainless steel with black nitride finish

CMC GAS TUBES:

LENGTH	PART #	LENGTH	PART #
Rifle	81625	Carbine	81622
Int.	81624	Pistol	81621
Mid	81623		

CMC STANDARD BUFFER TUBE KIT



Now manufactured and assembled in-house in Fort Worth, Texas! Compatible with MIL-Spec AR-15 stocks, this kit contains all the necessary parts to mount a stock assembly onto your lower receiver. Machined from 6061-T6 aluminum with a MIL-A-8625 Type II, Class 2 standard anodized finish.

FEATURES:

- 6061-T6 Grade Aluminum
- 6-Position MIL-Spec Carbine Buffer Tube
- Carbine Recoil Buffer 3oz
- High-Quality Recoil Spring
- Castle Nut & QD Receiver End Plate

CMC STANDARD BTK:

LENGTH	PART #
6 Position, Carbine	81626

CMC ENHANCED BUFFER TUBE KIT



This Texas-made Enhanced Buffer Tube Kit is compatible with MIL-Spec AR-15 stocks and contains all the necessary parts to mount a stock assembly onto your lower receiver. Machined from 7075-T6 aluminum with a Type III, Class 2 hard anodized finish.

FEATURES:

- 7075-T6 Grade Aluminum
- 6-Position MIL-Spec Carbine Buffer Tube
- Carbine Recoil Buffer 3oz
- High-Quality Recoil Spring
- Castle Nut & QD Receiver End Plate

CMC ENHANCED BTK:

LENGTH

6 Position, Carbine

PART

82626

CMC 8-POSITION BUFFER TUBE KIT



Manufactured and assembled in-house in Fort Worth, Texas! This 8-position Buffer Tube is machined from industry-standard 6061-T6 aluminum with a MIL-A-8625 Type III, Class 2 hard anodized finish. Features precise drainage holes that remove water from the system in marine environments.

FEATURES:

- 8-Position Buffer Tube (A5 Length)
- MIL-Spec
- A5 Style Buffer, 3.8oz
- High-Quality Recoil Spring
- Castle Nut & QD Receiver End Plate

CMC 8P-A5 BTK:

LENGTH

8 Position, A5

PART

83626

PARTS

CMC LOW PROFILE GAS BLOCK



The CMC Triggers' Low Profile AR-15 Gas Block is a one-piece block designed to fit inside most free-float hand guards. Securely attaches to the barrel with included dual hex head set-screws.

FEATURES:

- Machined from 17-4PH Stainless Steel
- Weight: 0.66 oz
- Dimensions: 1.35(ht) 1(ln)

CMC GAS BLOCK:

BARREL	PART #
.750	81611

CMC LOWER PARTS KIT



INCLUDES:

- Bolt Catch
- Bolt Catch Plunger
- Bolt Catch Spring
- Bolt Catch Roll Pin
- Mag Release
- Mag Release Button
- Mag Release Spring
- Buffer Retainer Spring
- Safety
- Buffer Retainer
- Safety Detent Spring
- Safety Detent
- Trigger Guard
- Trigger Guard Roll Pin
- Take-own Detent Springs
- Take-down Detent
- Take-down Pins

**Note: Fire control group & grip not included*

CMC LPKS:

INCLUDED PARTS

Standard (No Trigger)
With CMC 3.5lb Single Stage Curved Trigger

PART

81500
81501

PIN SETS

CMC ANTI-WALK PIN SETS



CMC Triggers offers all versions of their Drop-in AR Trigger in small pin, large pin, and M&P 15-22 composite pin.

INCLUDES:

- 2 Posts, 4 Screws, 2 Wrenches
- Positive retention of trigger assembly
- Assembly tools provided with kit
- Easy to install or remove
- Improved reliability of trigger assembly
- No sharp protrusions to interfere with hand or glove

CMC ANTI-WALK PIN SETS:

PIN SIZE

Small (.154Ø)

Large (.172Ø)

M&P 15-22 & Composite Receiver (.154Ø)

PART

91401

91402

91403

ACCESSORIES

CMC M-LOK® ACCESSORIES

The M-LOK® mounting system allows you to attach just about anything to your rail system without having to remove the rail itself. It's universal, and it makes it possible for you to mount only what you need, and exactly where you need it.



4-PIECE ACCESSORY KIT

INCLUDES:

- 1 – CMC M-LOK® QD Sling Mount
- 1 – CMC M-LOK® 3 Slot Picatinny Rail
- 1 – CMC M-LOK® 5 Slot Picatinny Rail
- 1 – CMC M-LOK® 7 Slot Picatinny Rail

CMC M-LOK® ACCESSORIES:

ACCESSORIES

4-Piece Accessory Kit

Picatinny Rail – 3 Slot

Picatinny Rail – 5 Slot

Picatinny Rail – 7 Slot

QD Sling Mount

PART

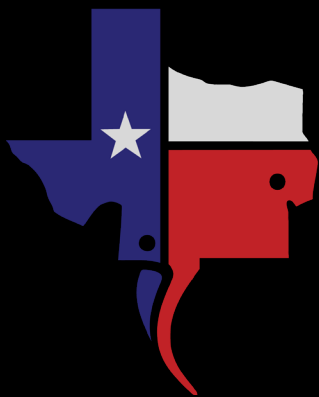
81724

81721

81722

81723

81720



CMC TRIGGERS

100% MADE IN THE GREAT STATE OF TEXAS

CMCTRIGGERS.COM | 817-563-6611 | 5597 OAK STREET, FORT WORTH, TX 76140