

2026

Shanghai Sunfull Automation Co., Ltd

TEL: +86(21)58776098,

Website: www.bacnetchina.com

Singapore Milesgo IIOT PTE LTD

TEL: +65 80385403



FOCUS ON WEB HMI & IOT

Over 14 years development experience

Agenda

- **Company Introduction**
- **Our Products**
- **Solutions**
- **Services**



PART 1

ABOUT US

About Us

- Company Introduction
- Development Course
- Qualification
- Certification
- Sunfull Advantage

上海迅饶总部

- 📍 上海市闵行区新龙路1333弄71号1层
- ☎ +86 (21) 5877 6098
- ✉ sales@opcmaster.com
- 🌐 www.bacnetchina.com

湖北技术服务中心

- 📍 湖北省武汉市洪山区珞瑜国际中心15A10室
- ☎ +86 (27) 8766 8488
- ✉ sales@opcmaster.com

广东技术服务中心

- 📍 广东省广州市天河区华夏路28号1806房
- ✉ sales@opcmaster.com



Singapore

- 📍 28 Senang Crescent, #05-11, Bizhub 28, Singapore 416601
- ☎ +65 80385403
- ✉ milesgoiiot@gmail.com
- 🌐 www.bacnetchina.com/english

USA

- 📍 5510 CUSTARD APPLE TRL KATY, TX 77494-3088
- ☎ +1 3214294515
- ✉ milesgoiiot@gmail.com



About Us

Shanghai Office



Shanghai Customer Service



Wuhan Technical Service



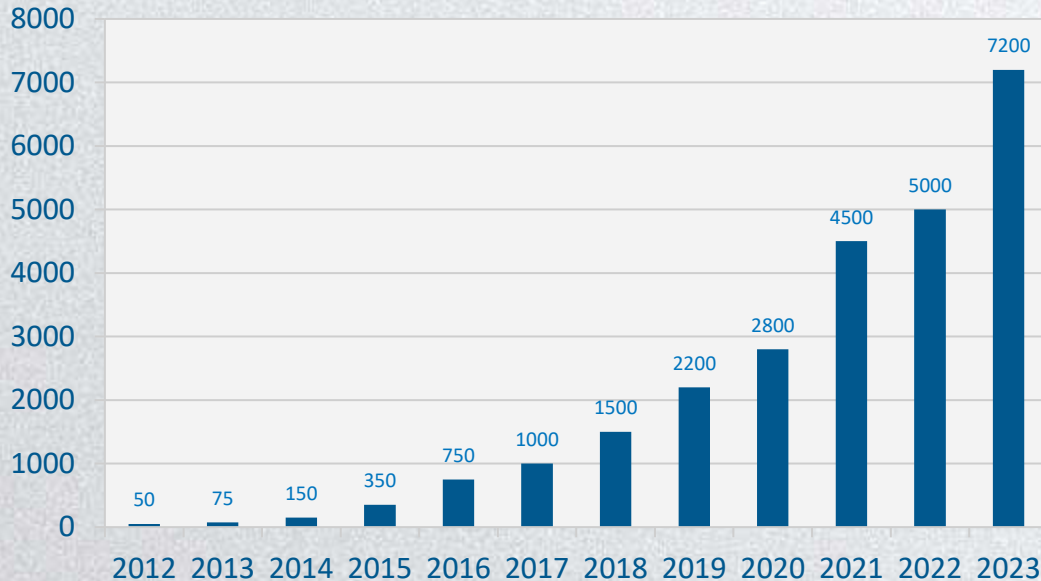
Guangzhou Customer Service



COMPANY INTRODUCTION

We specialized in the R&D of WEB HMI, IOT cloud platform, protocol conversion gateway, DDC/IO module, OPC Server, Energy Management Platform, etc.

Annual Output Value



Enterprise Purpose

Focus on WEB HMI & IOT



Company Size

Total 30 members.
60% are R&D engineer.

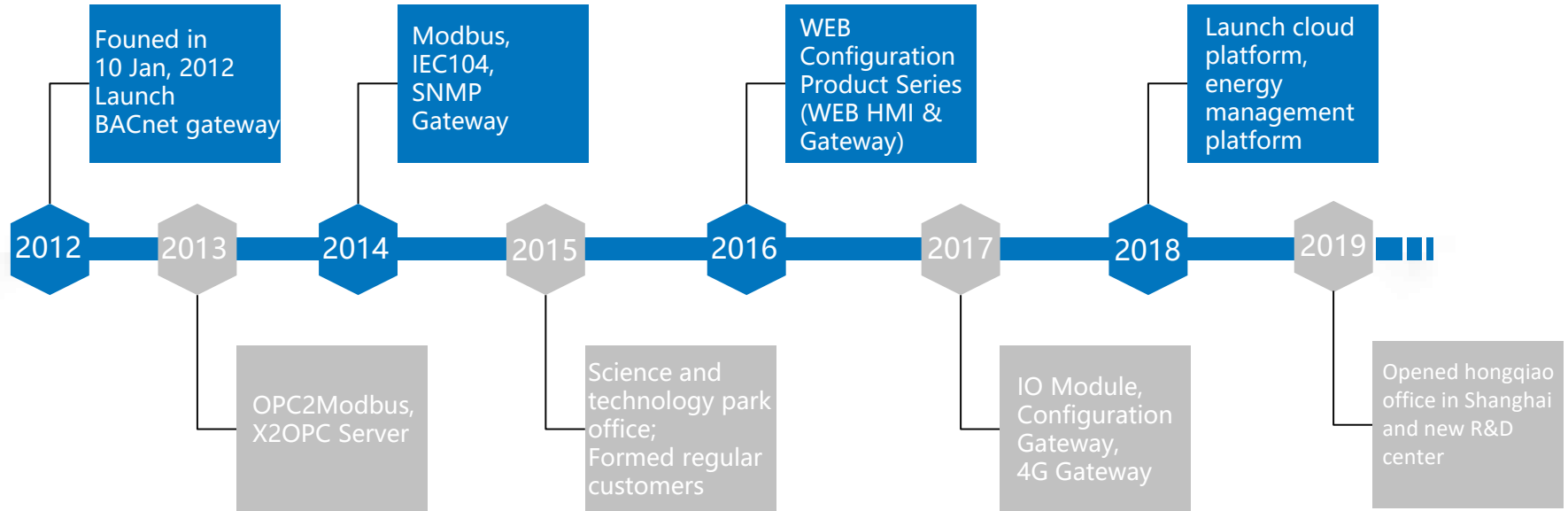


Annual Output Value

2023 \$10.28 million USD
2022 \$7.14 million USD
2021 \$6.42 million USD

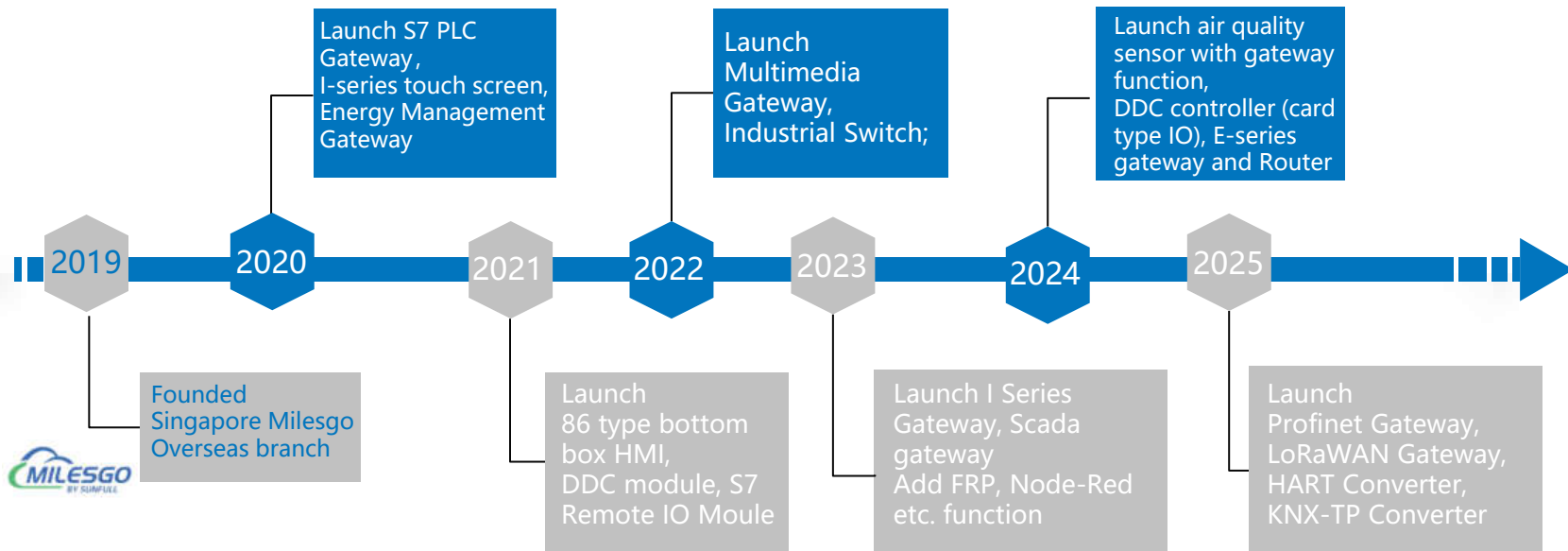
DEVELOPMENT COURSE

Shanghai Sunfull is a leading manufacturer in China, and has been widely praised by the industry.



DEVELOPMENT COURSE

Shanghai Sunfull is a leading manufacturer in China, and has been widely praised by the industry.



Corporate Philosophy

"Free Data. Unified Systems. Smarter World"



Technical Perspective

Break down barriers between devices, systems and platforms to enable multi-protocol and multi-platform interconnection.



Business Perspective

Help customers reduce integration costs, improve operation and maintenance efficiency, and extend system lifecycle.



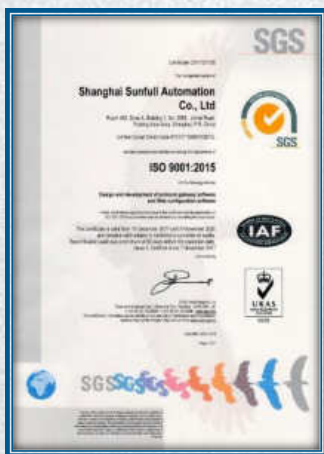
Social Perspective

Drive the development of smart buildings, smart factories and smart cities, and support carbon neutrality and sustainable development.



QUALIFICATION

Company conforms to SAP, CRM, ISO9001 quality system standardized management.



CERTIFICATION

BTL Certificate, OPC Certificate



BTL



OPC



CE



RoHS

CERTICATION

Software Copyright & Patent



Software Copyright

Patent



Trademark-迅饶



Trademark - Milesgo



WEB HMI, IIoT, uSaaS, etc

More than **100**

ADVANTGAE



Professional

Over 14 Years IOT R&D experience



Stable

boasts cumulative shipments of 120,000 units, servicing upwards of 10,000 projects per year.



Easy-Configuration

Graphic Operation



Standardized Management

SAP, CRM, ISO9001



Flexible & Highly Compatible

500+ protocols;
5G/4G/Wi-Fi/ Ethernet /RS485/ RS232



Competitively priced

ARM Series
Lite Series



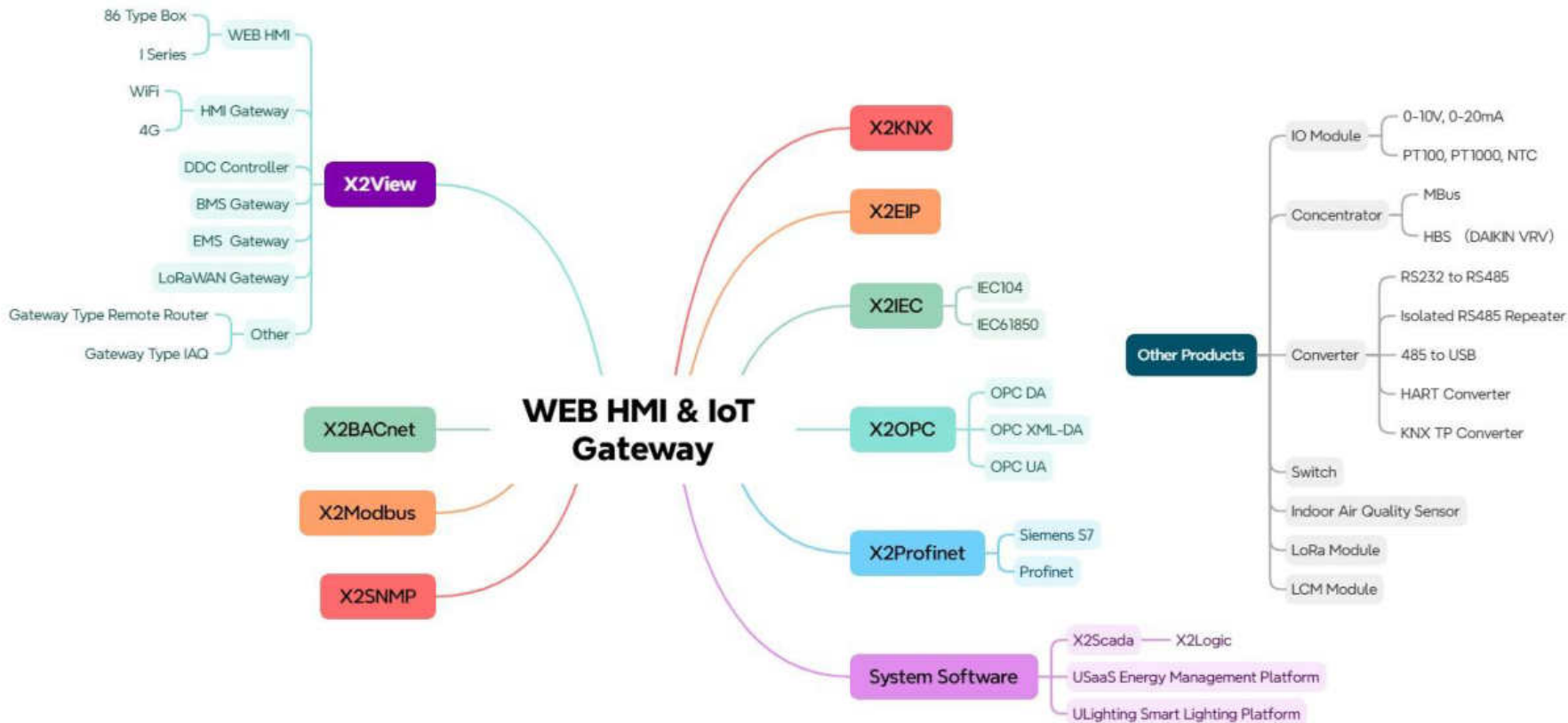
PART 2

Products

Look Ahead

- Protocol Conversion Gateway
- WEB HMI
- DDC
- WEB Scada Gateway
- IO Module
- EMS

Sunfull Products



1. Web Configuration Series

X2View



**WEB HMI
Touch Screen**

HMI Gateway with
touch screen

**HMI
Gateway**

HMI Gateway with
RS485 & Ethernet

**DDC
Controller**

HMI Gateway with
DI, DO, AI, AO

WEB HMI - I Series

Capacitive screen

HTML-5 Page

JS, Graphic, PLC mixed Programming

SMS, E-mail, Telegram, WhatsApp, LINE etc. Alarm

Store to Influx DB, MySQL, SQL Server, PostgreSQL

Open Http WEB service



Model	I4-1002	I7-1002	I7-1031	I10-1031	I15-1031
Size	4" TFT	7" TFT	7" TFT	10.1" TFT	15.6 TFT
Resolution	480*480	1024*600	1024*600	1280*800	1920*1080
Collection Protocol	500+ Protocols (Including Modbus, M-Bus, BACnet, Siemens PLC, SNMP, OPC, etc.)				
Transfer Protocol	BACnet MSTP/IP, Modbus RTU/TCP, Influx DB/MySQL/SQL Server, IEC61850, MQTT, OPC UA, OPC XML-DA				
Hardware Interface	1x Ethernet, 2x RS485	1x Ethernet, 2x RS485	1x Ethernet, 3x RS485, 1x RS232	1x Ethernet, 3x RS485, 1x RS232	1x Ethernet, 3x RS485, 1x RS232
Hardware Parameter	Linux; 1 Core 800MHz; 512M RAM; 8G Flash	Linux; 4 Core 1.2GHz; 1G RAM; 8G Flash	Linux 4 Core 1.2GHz; 1 G RAM; 8G Flash;		
Installation	86 Type bottom box			Wall-Mounted	
Support points	512	2048	2048	2048	2048
Wi-Fi Module	Optional	Optional	Optional	Optional	Optional

WEB Scada Gateway

SMS, E-mail, Telegram,
WhatsApp, LINE etc. Alarm

Timer, Trigger,
User management

JS, Graphic, PLC mixed
Programming

PID Control function

MQTT service

Open Http WEB service



Model	HMI1001-ARM	HMI002-ARM	HMI2004-ARM	HMI2004-A9
Collection Protocol	500+ Protocols (Including Modbus, M-Bus, BACnet, Siemens PLC, SNMP, OPC, etc.)			
Transfer Protocol	BACnet , Modbus , Database(MySQL/SQL Server/Influx DB), MQTT, IEC61850, OPC UA, OPC XML-DA			
Hardware Interface	1x Ethernet, 1x RS485	1x Ethernet, 2x RS485	2x Ethernet, 4x RS485	2x Ethernet, 4x RS485
Hardware Parameter	CPU: 1 Core 750MHz; OS: Linux RAM: 64M; Flash: 32M		CPU: 1 Core 1GHz; OS: Linux RAM: 512M; Flash: 4G	
Support Points	256	512	1024	2048
Wi-Fi/ 4G module	Optional	Optional	Optional	Optional

Note: HMI2004-A9 support Influx DB, can store 3 years data.

DDC Controller

DI/DO,
IO module extension

Timer, Trigger,
User management

JS, Graphic, PLC mixed
Programming

PID Control function

MQTT service

Open Http WEB service



Model	DDC1001-2222	DDC1001-8400	DDC1002-8200	DDC1002-12800	DDC2003-8600
Collection Protocol	BACnet IP, Modbus				500+ Protocols (Including Modbus, M-Bus, BACnet, Siemens PLC, SNMP, OPC, etc.)
Transfer Protocol	BACnet IP, Modbus, MQTT (Supporting both Sunfull cloud Platform IIOTSaaS and FanNeng)				BACnet , Modbus , Influx DB/MySQL/SQL Server, IEC61850, MQTT, OPC UA, OPC XML-DA
Hardware Parameter	Linux; 1 Core 750MHz; 64M RAM;32M Flash				Linux; 1 Core 800MHz; 512M RAM; 8G Flash
Hardware Interface	1x Ethernet, 1x RS485		1x Ethernet, 2x RS485		2x Ethernet, 3x RS485
IO	2 DI, 2 DO, 2 AI, 2 AO	8 DI, 4 DO, 0 AI, 0 AO	8 DI, 2 DO, 0 AI, 0 AO	12 DI, 8 DO, 0 AI, 0 AO	8 DI, 6 DO, 0 AI, 0 AO
Digital Input	Dry Contact				
Digital Output	Dry Contact, Max 220V/5A(Resistive Load)				Dry Contact, Max 220V/8A
Analog Input	Voltage type 0-10V input		-		
Analog Output	Voltage type 0-10V output		-		
Support points	256		512		718

Mbus to MQTT Gateway

Wechat, Ding Talk,
Email etc. Alarm

Timer, Trigger,
User management

JS, Graphic, PLC mixed
Programming

PID Control function

MQTT service

Open Http WEB service



Model	HMI1001-MBus	HMI002-MBus	HMI1011-MBus	HMI1010-MBus
Collection Protocol	Mbus_WaterMeter(CJ188),Mbus_EnergyMeter(CJ188) Mbus_EnergyMeter_En,ModbusRTUClient ModbusTCPClient,DLT645-1997 DLT645-2007			Mbus_WaterMeter(CJ188), Mbus_EnergyMeter(CJ188) Mbus_EnergyMeter_En, ModbusTCPClient
Transfer Protocol	Modbus , BACnet IP, MQTT			Modbus TCP, BACnet IP, MQTT
Hardware Interface	1x Ethernet, 1x RS485	1x Ethernet, 2x RS485	1x Ethernet, 1x RS485,1xMbus Port	1x Ethernet, 1xMbus Port
Hardware Parameter	CPU: 1 Core 750MHz; OS: Linux RAM: 64M; Flash: 32M			
Support Points	256	512		256

Scada Gateway

Web Scada Mode: the Scada software supports up to 2048 points

Support collection protocol: OPC UA, OPC XML-DA, OPC DA, BACnet IP, Modbus TCP, PLC(Siemens S7, EtherNet/IP)、SNMP, and Simulator

Support collection database: SQL (MySQL, SQL Server, PostgreSQL, MongoDB, Redis, DM (domestic Dameng database), InfluxDB time-series database),

Web Scada Mode: Transfer end, support OPC UA , MQTT server, InfluxDB, MySQL, SQLServer, PostgreSQL database



Model	HMI2000-Scada
Collection Protocol	500+ Protocols (Including Modbus, M-Bus, BACnet, Siemens PLC, SNMP, OPC, etc.)
Transfer Protocol	BACnet , Modbus , MySQL/SQL Server , InfluxDB ,MQTT, OPC UA
Port	2x Ethernet
Hardware Parameter	CPU: 4 Core 2GHz; OS: Linux; RAM: 4G; Flash: 32G
Support Points	2048

2. Protocol Conversion Gateway



**BACnet
Gateway,
Router**

X2BACnet

**Modbus
Gateway,
Router**

X2Modbus

**Profinet/
S7 PLC
Gateway**

X2Profinet

**SNMP
Gateway**

X2SNMP

**IEC104/
IEC61850
Gateway**

X2IEC

**KNX
Gateway**

X2KNX

**EtherNet/IP
Gateway**

X2EIP

BACnet Gateway

AI/AO/AV, BI/BO/BV, MSI/MSO/MSV,
Schedule, Trend Log, total 11 objects

Support COV Subscription

Support BBMD cross
network segment access

Support JS and Trigger to
realize logic control

Support Alarm and Event



Model	BAC1001-ARM	BAC1002-ARM	BAC2004-ARM	BAC2004-A9
Collection Protocol	500+ Protocols (Including Modbus, M-Bus, BACnet, Siemens PLC, SNMP, OPC, etc.)			
Transfer Protocol	BACnet IP		BACnet MSTP/IP	
Hardware Interface	1x Ethernet, 1x RS485	1x Ethernet, 2x RS485	2x Ethernet, 4x RS485	
Hardware Parameter	CPU: 1 Core 750MHz; OS: Linux RAM: 64M; Flash: 32M		CPU: 1 Core 1GHz; OS: Linux RAM: 512M; Flash: 4G	
Support Points	256	512	1024	2048

Mbus to BACnet Gateway

AI/AO/AV, BI/BO/BV, MSI/MSO/MSV,
Schedule, Trend Log, total 11 objects

Support COV Subscription

Support BBMD cross
network segment access

Support JS and Trigger to
realize logic control

Support Alarm and Event



Model	BAC1001-MBus	BAC1002-MBus	BAC1011-MBus	BAC1010-MBus
Collection Protocol	Mbus_WaterMeter(CJ188),Mbus_EnergyMeter(CJ188) Mbus_EnergyMeter_En,ModbusRTUClient ModbusTCPClient,DLT645-1997 DLT645-2007			Mbus_WaterMeter(CJ188), Mbus_EnergyMeter(CJ188) Mbus_EnergyMeter_En, ModbusTCPClient
Transfer Protocol	BACnet IP			
Hardware Interface	1x Ethernet, 1x RS485	1x Ethernet, 2x RS485	1x Ethernet, 1x RS485,1xMbus Port	1x Ethernet, 1xMbus Port
Hardware Parameter	CPU: 1 Core 750MHZ; OS: Linux RAM: 64M; Flash: 32M			
Support Points	256		512	256

Modbus Gateway

Support 4 Register Type
0X, 1X, 3X, 4X

Support linear conversion,
fetch bit, high and low byte

Compatible with Modbus
Router function

Support JS and Trigger to
realize logic control

Support multiple Modbus
Slaves



Model	MOD1001-ARM	MOD1002-ARM	MOD1004-ARM	MOD1006-ARM	MOD1008-ARM	MOD2004-ARM	MOD2004-A9
Collection Protocol	500+ Protocols (Including Modbus, M-Bus, BACnet, Siemens PLC, SNMP, OPC, etc.)						
Transfer Protocol	Modbus , OPC UA						
Hardware Interface	1x Ethernet, 1x RS485	1x Ethernet, 2x RS485	1x Ethernet, 4x RS485	1x Ethernet, 6x RS485	1x Ethernet, 8x RS485	2x Ethernet, 4x RS485	
Hardware Parameter	CPU: 1 Core 750MHz; OS: Linux RAM: 64M; Flash: 32M		CPU:4Core 1.2GHz; OS: Linux; RAM: 1G; Flash: 8G		CPU: 1Core 1GHz; OS: Linux RAM: 512M; Flash: 4G		
Support Points	256	512	1024	1536	2048	1024	2048

Mbus to Modbus Gateway

Support 4 Register Type
0X, 1X, 3X, 4X

Support linear conversion,
fetch bit, high and low byte

Compatible with Modbus
Router function

Support JS and Trigger to
realize logic control

Support multiple Modbus
Slaves



Model	MOD1001-MBus	MOD1002-MBus	MOD1011-MBus	MOD1010-MBus
Collection Protocol	Mbus_WaterMeter(CJ188),Mbus_EnergyMeter(CJ188) Mbus_EnergyMeter_En,ModbusRTUClient ModbusTCPClient,DLT645-1997 DLT645-2007			Mbus_WaterMeter(CJ188), Mbus_EnergyMeter(CJ188) Mbus_EnergyMeter_En, ModbusTCPClient
Transfer Protocol	Modbus RTU/TCP			Modbus TCP
Hardware Interface	1x Ethernet, 1x RS485	1x Ethernet, 2x RS485	1x Ethernet, 1x RS485,1xMbus Port	1x Ethernet, 1xMbus Port
Hardware Parameter	CPU: 1 Core 750MHz; OS: Linux RAM: 64M; Flash: 32M			
Support Points	256	512		256

Siemens S7 Gateway

I/Q/DB1/DB2/DB3/DB4/DB5/DB6/D
B7/DB8, total 10 objects

Support Linear conversion,
bit extraction

Support high-low byte
swapping

Support JS and Trigger to
realize logic control

Support Web browsing for
real-time data viewing



Model	PFN1001-ARM	PFN1002-ARM	PFN2004-ARM	PFN2004-A9
Collection Protocol	500+ Protocols (Including Modbus, M-Bus, BACnet, Siemens PLC, SNMP, OPC, etc.)			
Transfer Protocol	Siemens S7 Protocol, OPC UA			
Hardware Interface	1x Ethernet, 1x RS485	1x Ethernet, 2x RS485	2x Ethernet, 4x RS485	
Hardware Parameter	CPU: 1 Core 750MHz; OS: Linux RAM: 64M; Flash: 32M		CPU: 1 Core 1GHz; OS: Linux RAM: 512M; Flash: 4G	
Support Points	256	512	1024	2048

Mbus to S7 Gateway

I/Q/DB1/DB2/DB3/DB4/DB5/DB6/D
B7/DB8, total 10 objects

Support Linear conversion,
bit extraction

Support high-low byte
swapping

Support JS and Trigger to
realize logic control

Support Web browsing for
real-time data viewing



Model	PFN1001-MBus	PFN1002-MBus	PFN1011-MBus	PFN1010-MBus
Collection Protocol	MBus_WaterMeter(CJ188),MBus_EnergyMeter(CJ188) MBus_EnergyMeter_En,ModbusRTUClient ModbusTCPClient,DLT645-1997 DLT645-2007			MBus_WaterMeter(CJ188), MBus_EnergyMeter(CJ188) MBus_EnergyMeter_En, ModbusTCPClient
Transfer Protocol	Siemens S7			
Hardware Interface	1x Ethernet, 1x RS485	1x Ethernet, 2x RS485	1x Ethernet, 1x RS485,1xMbus Port	1x Ethernet, 1xMbus Port
Hardware Parameter	CPU: 1 Core 750MHz; OS: Linux RAM: 64M; Flash: 32M			
Support Points	256		512	256

Siemens Profinet Gateway

Support GSD files for easy loading of programming software

Support Linear conversion, bit extraction

Support high-low byte swapping

Support internal variables , checking the online/offline status

Support Web browsing for real-time data viewing



Model	PFN1024-ARM
Collection Protocol	500+ Protocols (Including Modbus, M-Bus, BACnet, Siemens PLC, SNMP, OPC, etc.)
Transfer Protocol	Siemens Profinet Protocol, OPC UA
Hardware Interface	3x Ethernet, 4x RS485
Hardware Parameter	CPU: 1 Core 1GHz; OS: Linux RAM: 512M; Flash: 4G
Support Points	1024

IO Module



Model	IOM12682	IOM16800	IOM8600	IOM16000	IOM01200	IOM0084	IOM0042	IOM0080T	IOM0080	
Hardware	32 bit; 72MHz; 64KB RAM; AC/DC 12-24V;									
Open Interface	Modbus RTU (RS485)									
IO	12 DI, 6 DO, 8 AI, 2 AO;	16 DI, 8 DO, 0 AI, 0 AO;	8 DI, 6 DO, 0 AI, 0 AO;	16 DI, 0 DO, 0 AI, 0 AO;	12 DI, 0 DO, 0 AI, 0 AO;	0 DI, 0 DO, 8 AI, 4 AO;	0 DI, 0 DO, 4 AI, 2 AO;	0 DI, 0 DO, 8 AI, 0 AO		
Digital Input	Dry Contact				0					
Digital Output	Dry Contact, MAX 220V/5A			0	Dry Contact, MAX 220V/5A		0			
Analog Input	0-10V, 0-20mA (AD 16bit)	0	0	0	0	0-10V, 0-20mA (AD 16bit)		Pt1000, Pt100, NTC(10K)	0-20mA (AD 16bit)	
Analog Output	0-10V, 0-20mA (DA 12bit)				-		0-10V, 0-20mA (DA 12bit)		-	

LoRaWAN Gateway

Built-in network server

Adopt Semtech's high-performance 8-channel SX1302 chip, supporting full duplex transmission

Support ChirpStack

Support Wechat, SMS platform, Ding Talk, Email, Feishu etc. Alarm

MQTT service



Model	HMI1002-ARM(LoRaWAN)
Collection Protocol	500+ Protocols (Including Modbus, M-Bus, BACnet, Siemens PLC, SNMP, OPC, etc.)
Transfer Protocol	BACnet, Modbus, OPC UA, MQTT
Hardware Interface	2x Ethernet, 2x RS485
Hardware Parameter	CPU: 1 Core 800MHz; OS: Linux RAM: 512M; Flash: 8G
Support Points	512
LoRa Frequency Band	CN470, there are also EU868/US915/AU915/AS923/KR920 options available

KNX Smart Lighting Gateway

Support KNX IP

Support timed control

Support logic programming to achieve intelligent lighting control for various scenarios

Support JS and Trigger to realize logic control

Support Web browsing for real-time data viewing



Model	KNX1002-ARM
Collection Protocol	500+ Protocols (Including Modbus, M-Bus, BACnet, Siemens PLC, SNMP, OPC, etc.)
Transfer Protocol	KNX IP
Hardware Interface	1x Ethernet, 2x RS485
Hardware Parameter	CPU: 1 Core 800MHz; OS: Linux RAM: 512M; Flash: 8G
Support Points	512

EtherNet/IP Gateway

Support EtherNet/IP

Support timed control

Support internal variable function,
and check the communication status

Support JS and Trigger to
realize logic control

Support Web browsing for
real-time data viewing



Model	EIP1002-ARM	EIP2004-ARM	EIP2004-A9
Collection Protocol	500+ Protocols (Including Modbus, M-Bus, BACnet, Siemens PLC, SNMP, OPC, etc.)		
Transfer Protocol	EtherNet/IP , OPC UA		
Hardware Interface	1x Ethernet, 2x RS485	2x Ethernet, 4x RS485	
Hardware Parameter	CPU: 1 Core 800MHz; OS: Linux RAM: 512M; Flash: 8G	CPU: 1 Core 1GHz; OS: Linux RAM: 512M; Flash: 4G	
Support Points	512	1024	2048

SNMP Gateway

Support SNMP(v1/v2/v3)

Support linear conversion,
bit extraction, high/low byte conversion

Support internal variable function,
and check the communication status

Support JS and Trigger to
realize logic control

Support Web browsing for
real-time data viewing



Model	SNMP1001-ARM	SNMP1002-ARM	SNMP2004-ARM	SNMP2004-A9
Collection Protocol	500+ Protocols (Including Modbus, M-Bus, BACnet, Siemens PLC, SNMP, OPC, etc.)			
Transfer Protocol	SNMP(v1/v2/v3) , OPC UA			
Hardware Interface	1x Ethernet, 1x RS485	1x Ethernet, 2x RS485	2x Ethernet, 4x RS485	
Hardware Parameter	CPU: 1 Core 750MHz; OS: Linux RAM: 64M; Flash: 32M		CPU: 1 Core 1GHz; OS: Linux RAM: 512M; Flash: 4G	
Support Points	256	512	1024	2048

IEC Gateway

Support IEC104, IEC61850

Support linear conversion,
bit extraction, high/low byte conversion

Support internal variable function,
and check the communication status

Support JS and Trigger to
realize logic control

Support Web browsing for
real-time data viewing



Model	IEC1001-ARM	IEC1002-ARM	IEC2004-ARM	IEC2004-A9
Collection Protocol	500+ Protocols (Including Modbus, M-Bus, BACnet, Siemens PLC, SNMP, OPC, etc.)			
Transfer Protocol	IEC104, IEC61850 , OPC UA			
Hardware Interface	1x Ethernet, 1x RS485	1x Ethernet, 2x RS485	2x Ethernet, 4x RS485	
Hardware Parameter	CPU: 1 Core 750MHz; OS: Linux RAM: 64M; Flash: 32M		CPU: 1 Core 1GHz; OS: Linux RAM: 512M; Flash: 4G	
Support Points	256	512	1024	2048

Gateway-Type Remote Networking Router

Support VPN-based remote networking for easy remote program updates

JS, Graphic, PLC mixed Programming

Support internal variable function, and check the communication status

Support JS and Trigger to realize logic control

Support Web browsing for real-time data viewing



Model	RT5001-WiFi	RT5001-WiFi-4G
Collection Protocol	Modbus, BACnet IP, OPC UA, Siemens S7	
Transfer Protocol	BACnet IP , Modbus TCP, MQTT	
Port	1x WAN Port: 1x 10/100Base-TX auto-negotiating port 4x LAN Port: 4x 10/100Base-TX auto-negotiating ports	
Hardware Parameter	CPU: 1 Core 580MHz; OS: Linux; RAM: 128M; Flash: 32M	
Support Points	512	
WiFi Interface	Support WiFi5 (downward compatible)	

Industrial Unmanaged Ethernet Switches

Redundant power supply

DIN-rail mounting

-10 to 60°C operating temperature range

Support IP30 protection

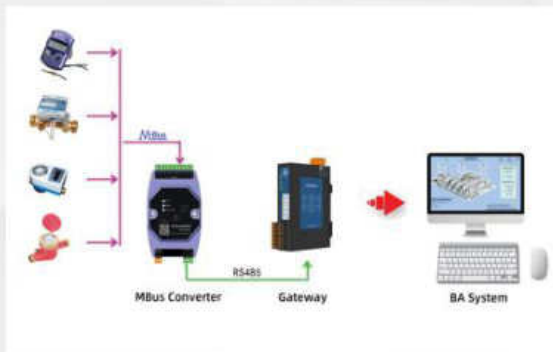
Sheet metal enclosure,
lightning protection design



Model	SW5000	SW8000
Input Voltage	Redundant dual DC 48V Power inputs(Support POE power supply)	
Input Current	0.1A@24V	
Overload Current Protection	1.1A	
Connection	2 removable 2-contact terminal blocks	
10/100BaseT(X)Ports(RJ45 connector)	5	8
Material	Calvanized Steel (Lighting protection, IP30)	

Converter series

MBus Converter



MBus Converter connects to the instrument's MBus through the MBus port, then converts to RS485 levels, allowing the PC upper computer or serial port device to access terminal equipment.

HBS Converter



HBS1001 concentrator connects to the Daikin VRV communication board via the HBS interface and then converts it to the RS485 level mode, which enables the PC host or gateway device to access the terminal instrument.

Converter series

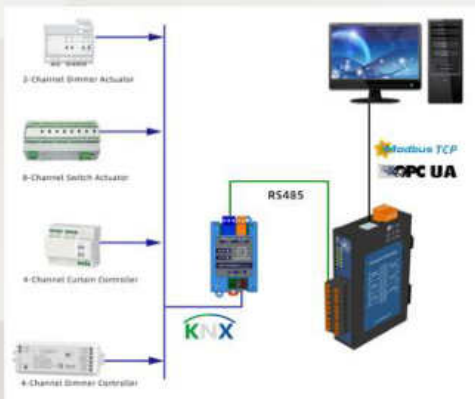
HART Converter



The HART/RS485 isolated converter is a transparent transmission device enabling bidirectional communication between HART and RS485 protocols. It allows users to read/write HART slave devices (e.g., 2-wire/4-wire current devices or other current-output instruments) via RS485 communication.

By connecting to the HART bus through the HART interface and converting signals to RS485 level, it enables PC host software or serial devices to access terminal instruments.

KNX-TP Converter



KNX-TP/RS485 converter is a transparent transmission device enabling bidirectional communication between KNX-TP bus and industrial RS485 networks.

It converts KNX-TP bus control data into standard RS485 signals and provides a reverse data transmission channel, bridging smart building systems with industrial control networks.

Soft Gateway Series



Soft gateway series

Gateway model/Distinction	X2OPC Server	OPC2WEB	OPC2Modbus
client	500+	OPC server	OPC server
Server	OPC server	OPC XML DA server/WEB server	Modbus server

Cloud Configuration & Energy Management Platform



Homepage dashboard



Real time monitoring



Energy data analysis



Historic data



Historical curves



Device record

Support Protocols List

Modbus

PLC

Siemens, mitsubishi , Omron, etc.
Hitachi PLC, AB DF1, Taiwan yonghong, delta PLC

Intelligent Lighting

KNX, telnet, dynet, etc.

Fire Control

Siemens Cerberus, Notifire,
etc

Mbus Meters

Energy Meter, Water Meter,
Flow Meter, etc.

Others

Bosch security,
Injection molding
machine etc.



BACnet

Elevator

Otis, mitsubishi, Hitachi, thyssenkrupp,
Finnish kone

HVAC

Trane, york, Hitachi, sanyo, carrier,
McVeier, Toshiba, Emerson, arcy, etc

UPS

Santa, delta, rogelang,
Emerson, etc

Environmental Protection

212 protocol

Others

SNMP

**Protocol
list**

Application



Smart buildings:
Office buildings, hotels,
shopping malls.
BACnet, MQTT, Modbus
Remotely monitoring



IIOT:
Data acquisition,
remote operation and
maintenance, predictive
maintenance of equipment.



Data center:
Room environment & power
monitoring
precision air conditioning, UPS
data monitoring and reporting.



Smart factory:
Factory production line;
equipment interconnection;
monitoring and management
of PLC, production equipment,
and electrical equipment.



**Energy Management & Smart
Parks**
integrated monitoring of
multi-energyflows
(electricity/water/gas/heat)



Pharmaceutical industry:
Safety monitoring & automation
Gas leakage monitoring gateway
+ safety
SMS and phone alarm

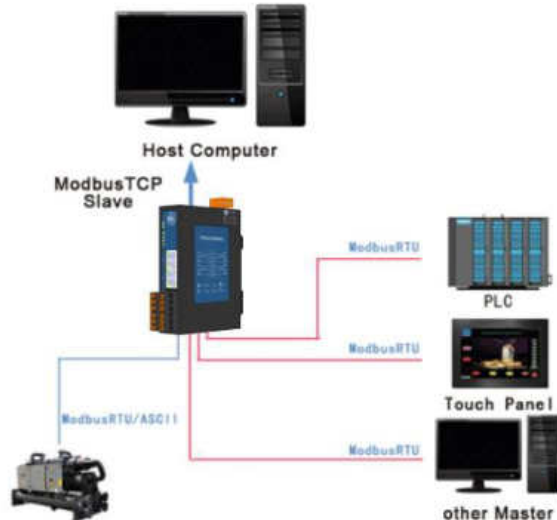
Application Case

01



X2OPC
WANDA PLAZA

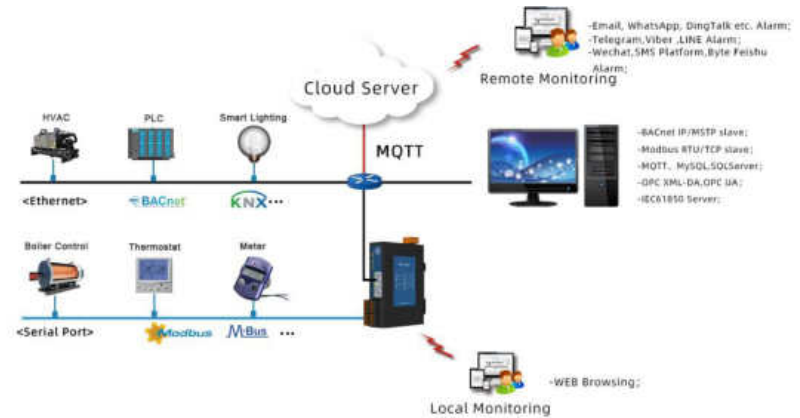
02



Multiple Modbus master access
Honeywell Building

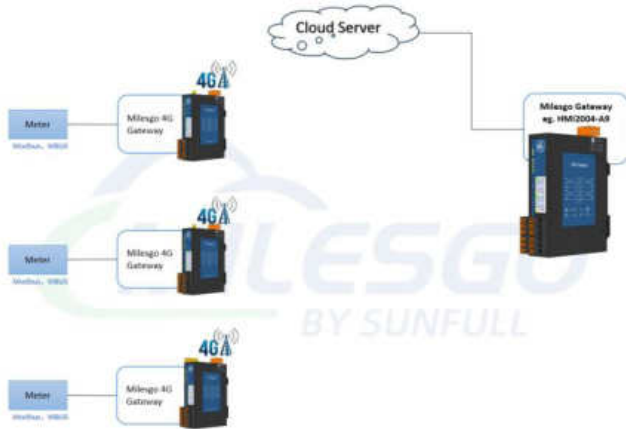
03

Remote monitoring by Cloud server



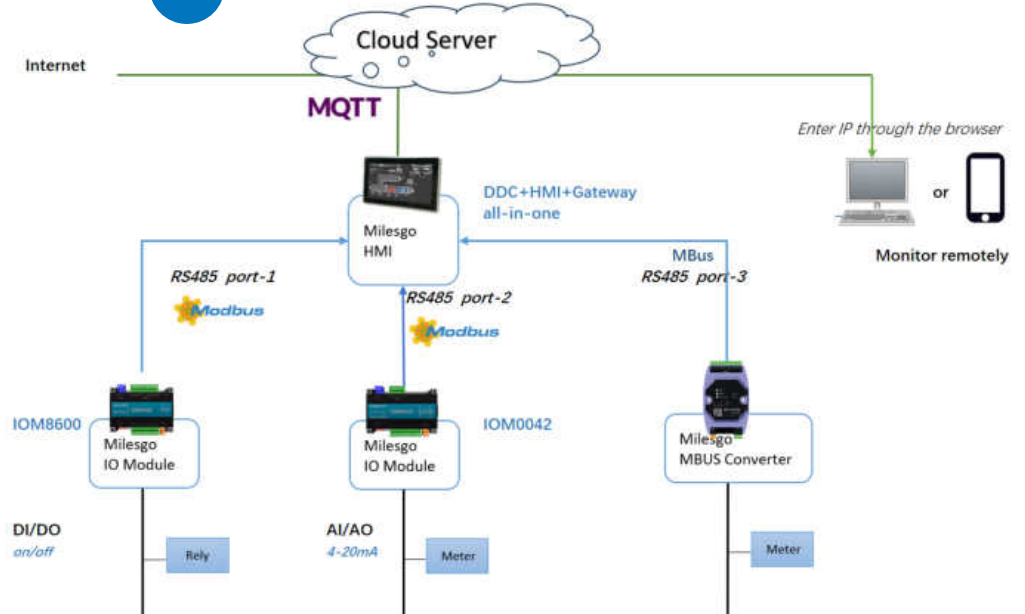
Application Case

04



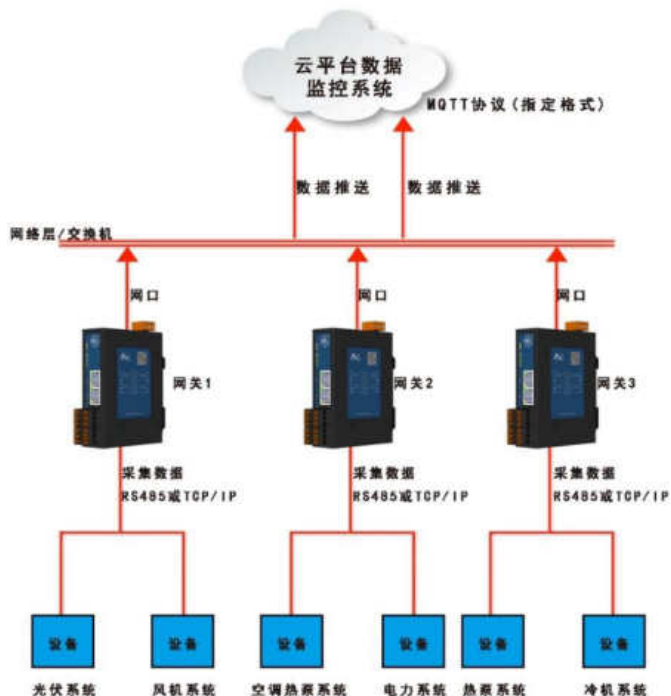
Wireless connection case
Also support SMS alarm

05



Remote monitoring DI/DO/AI/AO on the phone or PC

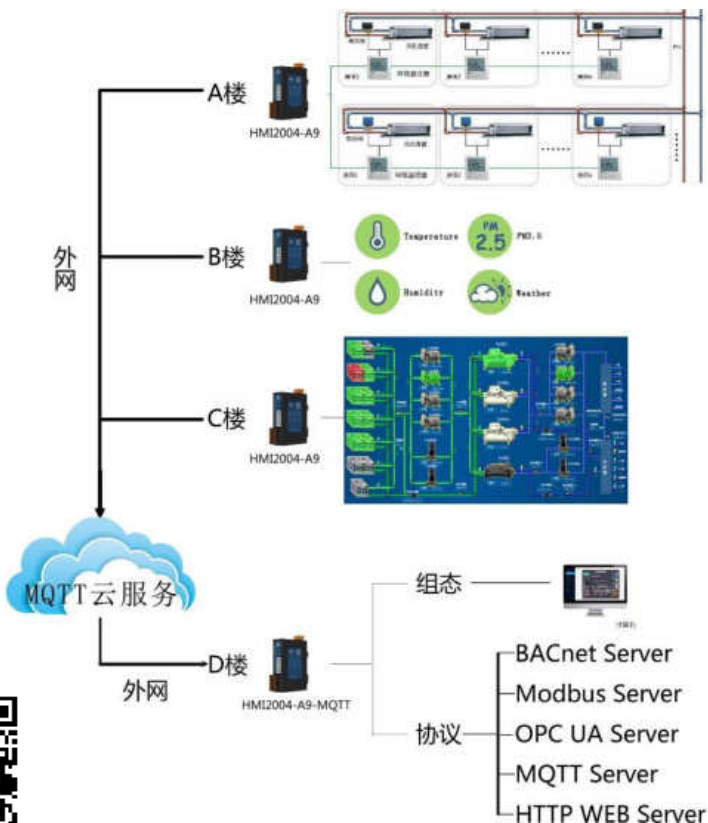
Data upload to Cloud Server



Scan to view demo cloud pages



Remote data transmission solution



2020-08-06

10:47:18

中央空调机房群控系统

冬夏季切换



- 主页
- 车间AHU
- 冷机参数
- 设备参数
- 历史报警
- 数据记录

2#螺杆机启停



- 空调供水温度设定 °C
- 空调冷机电流设定 %
- 冷却水温设定 °C
- 空调泵延迟时间 分钟
- 冷却泵延迟时间 分钟
- 空调旁通压差设定 Bar

空调泵启动原则 时间优先

空调旁通手动调节

%

3#离心机启停



- 空调供水温度设定 °C
- 空调冷机电流设定 %
- 冷却水温设定 °C
- 空调泵延迟时间 分钟
- 冷却泵延迟时间 分钟

0

1#螺杆机启停

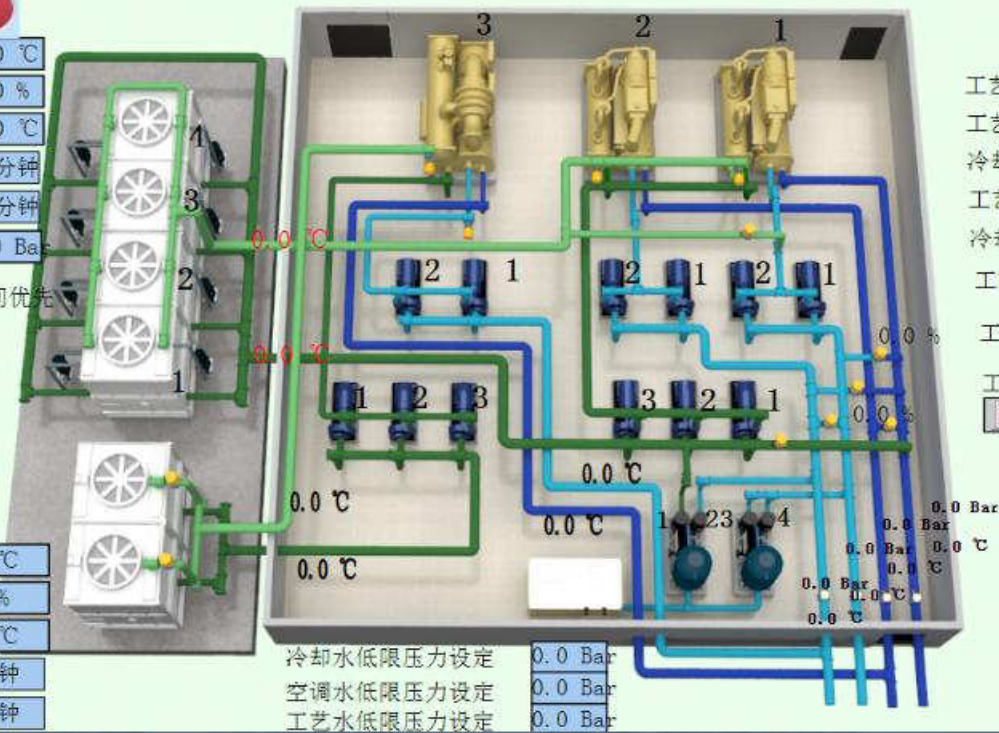


- 工艺供水温度设定 °C
- 工艺冷机电流设定 %
- 冷却水温设定 °C
- 工艺泵延迟时间 分钟
- 冷却泵延迟时间 分钟
- 工艺旁通压差设定 Bar

工艺泵启动原则 时间优先

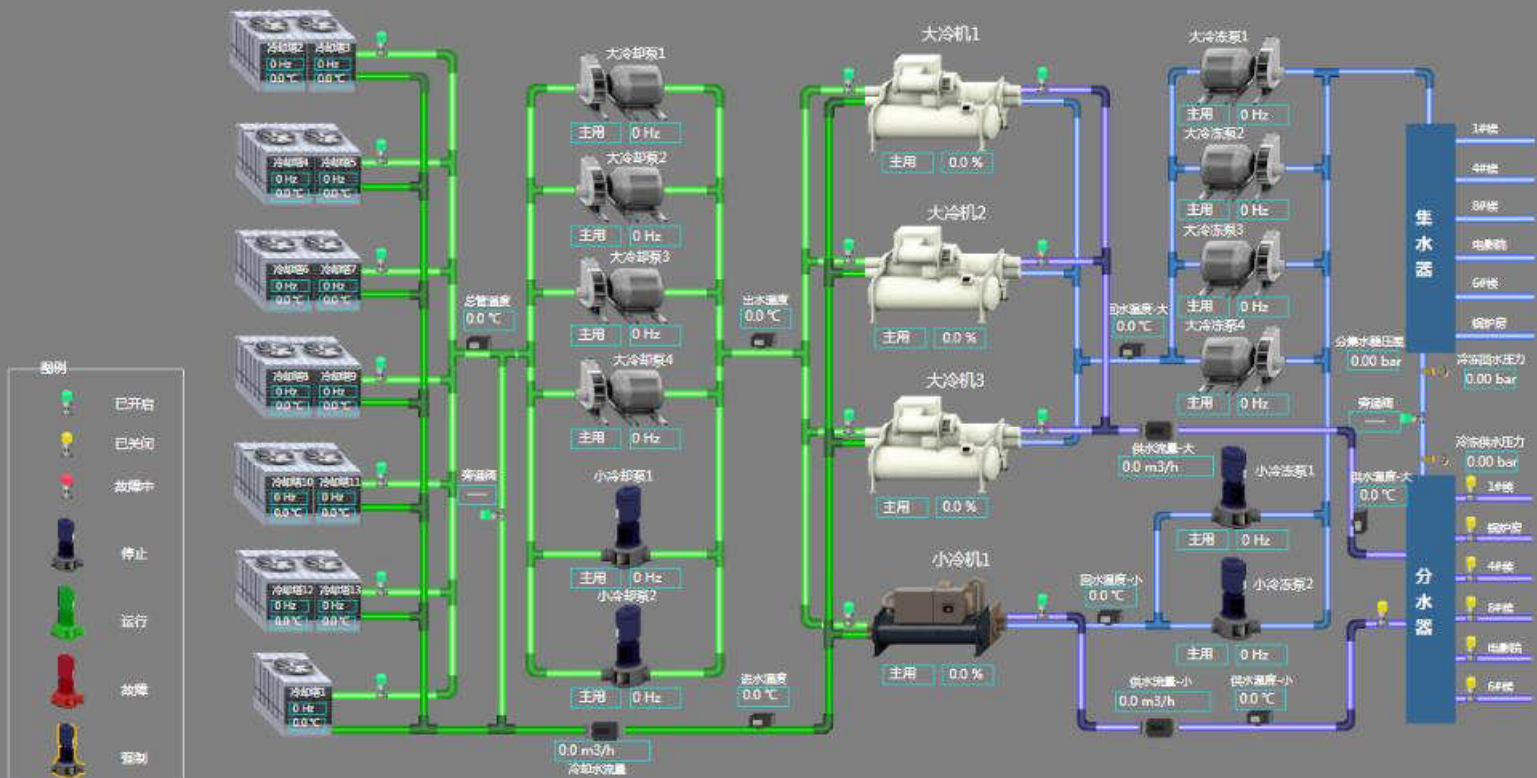
工艺旁通手动调节

%



- 冷却水低限压力设定 Bar
- 空调水低限压力设定 Bar
- 工艺水低限压力设定 Bar

2020-08-05



WID-690
在线

室内

空气质量: 优良



36.0 °C



舒适



正常



潮湿



轻度

标准值



17-27
温度°C



40-60
湿度%

CO2

0-60
ppm

TOVC

0-0.5
ppb

PM25

0-150
ug/m3

室外

空气质量: 优良



25.0 °C



良



正常



舒适



轻度

地暖进出水温度



回水

36.0 °C



进水

36.0 °C

Cooperative Partner



Product Application

Air Conditioner Industry Partner List	
1	Carrier
2	Trane
3	Honeywell
4	Siemens
5	YORK
6	BOSCH
7	SUMSUNG
8	LG
9	DAIKIN
10	HITACHI

IOT and Energy Conservation Office Partner List	
1	Alibaba Cloud Platform
2	Tencent Cloud Platform
3	Chaos Cloud Platform
4	Haina Cloud

Airport Partner List	
1	Beijing Daxing International Airport
2	Beijing Capital Airport
3	Shanghai Pudong Airport
4	Shanghai Hongqiao Airport
5	Lanzhou Zhongchuan Airport
6	Wuhan Tianhe Airport

Data Center Partner List	
1	Alibaba Data Port Zhangbei Data Center
2	Apple China (Guian) Data Center
3	Apple Ulanqab Data Center
4	Huawei Shanghai Data Center
5	Tenglong Yizhuang Cloud Data Center

Pharmaceutical Industry Partner List	
1	WuXi AppTec
2	Novartis
3	Roche
4	Shanghai Haini Pharmaceutical
5	Shanghai Pharmaceuticals Holding
6	Johnson&Johnson (Suzhou) Medical

EXHIBITION



OUR CUSTOMERS



PRODUCT APPLICATION

Industrial



Building



Factory



Airport



Air conditioner

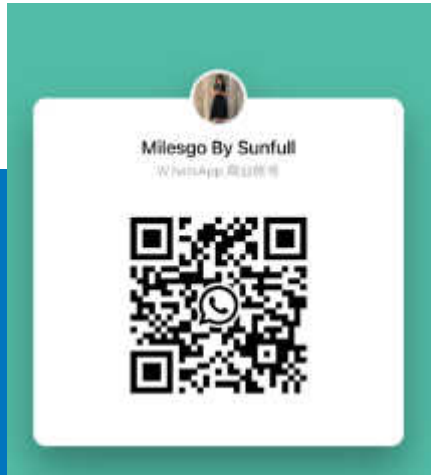


PART 3

CONTACT US

Contact Us

Contact Us



Shanghai Address: Room603,Building 25,Lane8633,Zhongchun Road,Qibao Town,Minhang District, Shanghai,China, Technical: 021-20252795
Sale: 021-58776098, EMAIL: sales@opcmaster.com

Singapore Address: 256 MILTONIA CLOSE, THE SHAUGHNESSY, SINGAPORE 768314
Tel: +65 80385403 EMAIL: milesgoiiot@gmail.com

Mobile:+65 80385403

Scan to view more information





FOCUS ON WEB HMI & IOT



THANKS!

More information can follow up
WeChat official account: BACnet