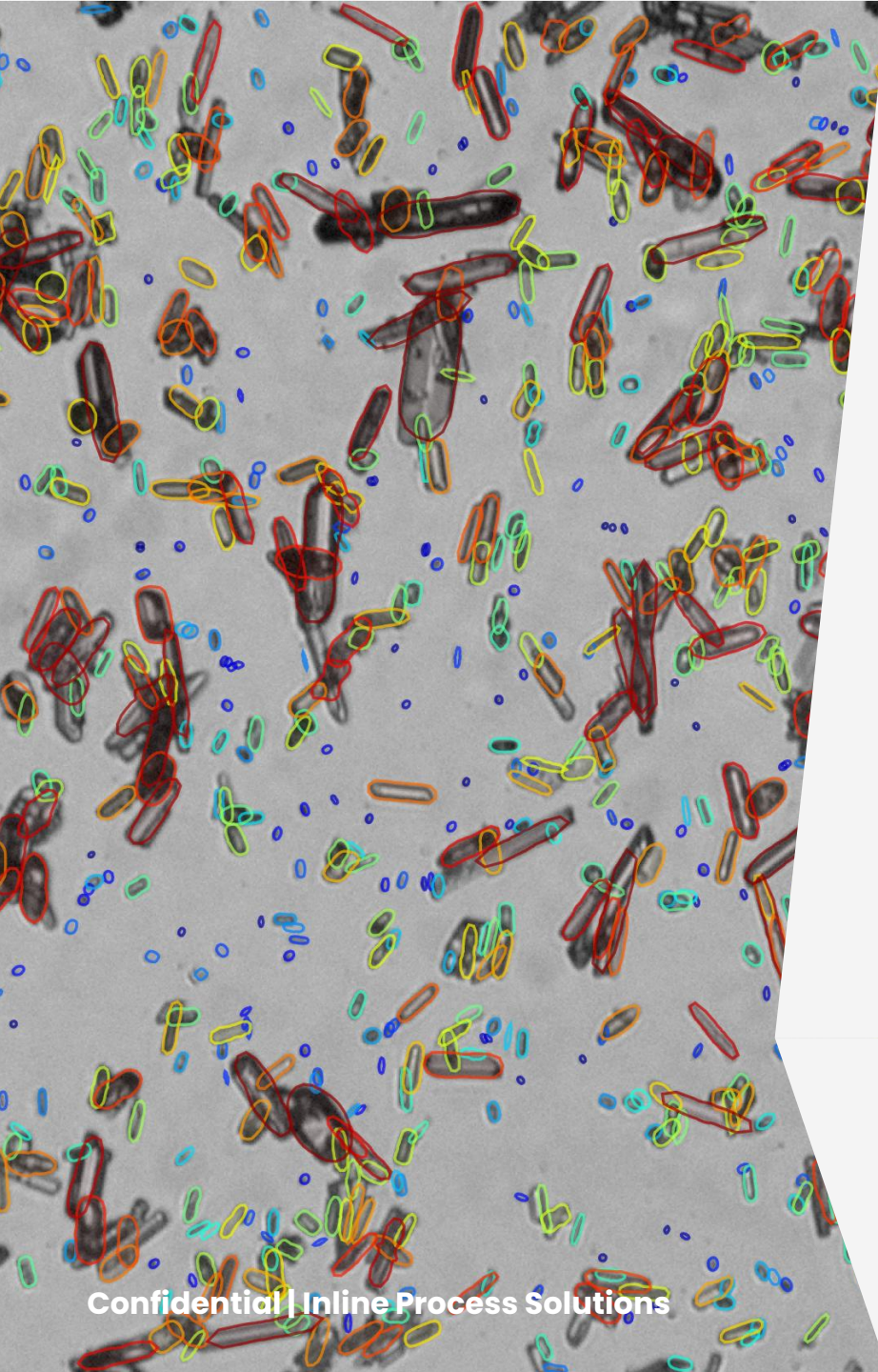


Product presentation

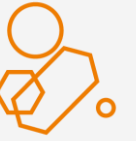
Inline Process Solutions GmbH

June 2025



INNOVATION

Rethink image-based measurements



Performant & reliable

Excellent images and precise particle shape detection



Plug & Measure

Standardized interfaces and without calibration



Robust design

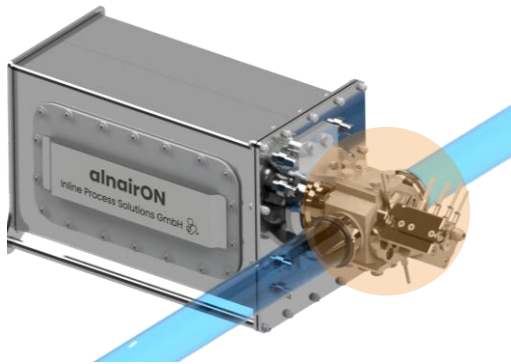
Challenging conditions in industrial production



OUR SOLUTION

Image-based sensor & AI analysis

- Monitoring particle flows in real time and at the point of interest
- Precise optical image-based sensor technology combined with AI-driven image analysis



inline sensor

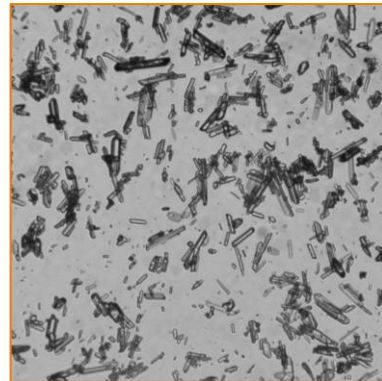
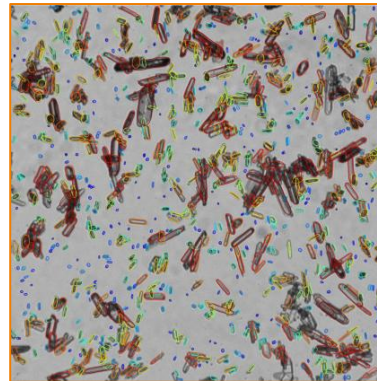
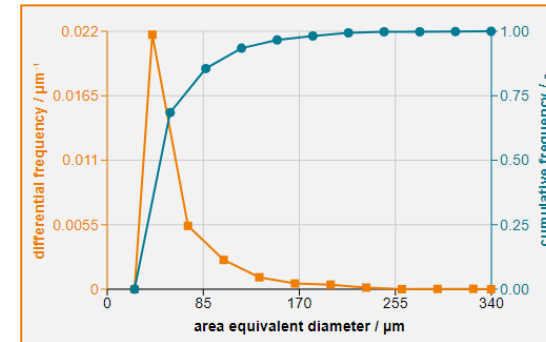


image data



AI-based particle
detection



process data

- Monitoring
- Control
- Prediction
- Process optimization



VERSATILE APPLICATION

Use cases from the industrial production



CRYSTALLIZATION API & fine chemistry

- Shorter development time
- Product quality
- Less rejects



PRECIPITATION Sugar industry

- Dynamic process control
- Filtration: longer changing intervals



RECYCLATES USE Construction materials

- Dynamic process control
- Product quality
- Continuous QM



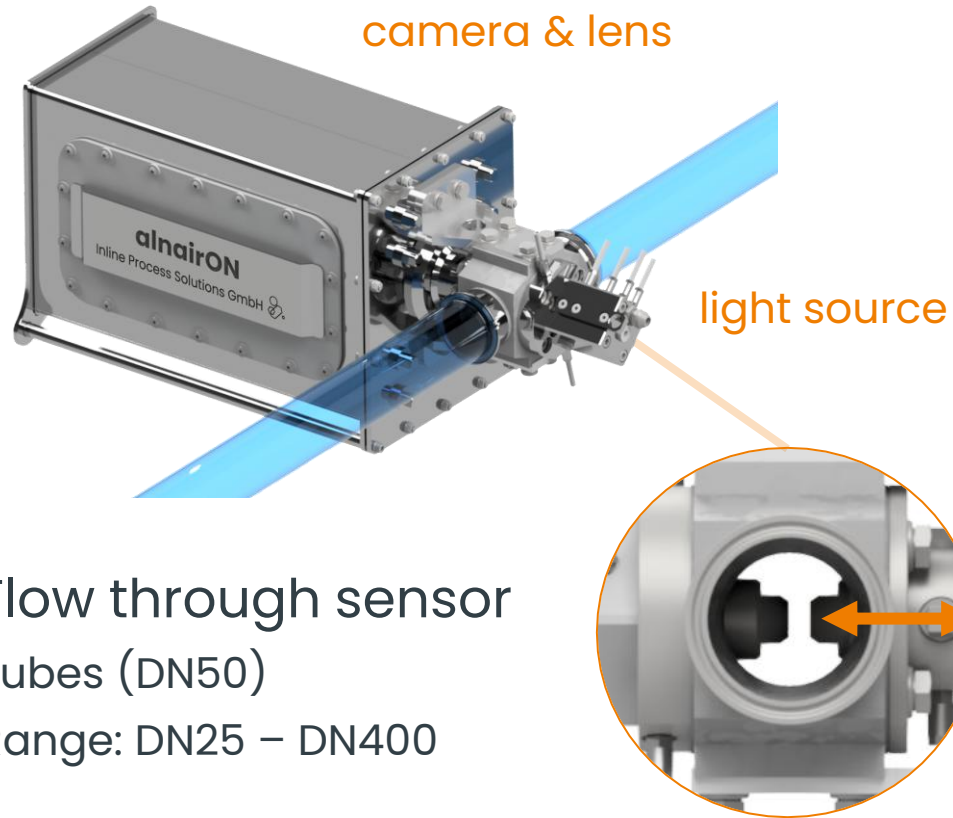
ANALYTICAL LAB Construction materials Crop protection Sugar industry

- Speed
- Reproducibility



FLOW THROUGH SENSOR **alnairON**

Technology with transmitted light



Flow through sensor
Tubes (DN50)
Range: DN25 – DN400

	alnairON
Temperature / °C	-30 up to +100
Pressure / bar _a	1.0 bis 5.0
Media-contacting parts	1.4404, NBR, sapphire glass
Measuring range*) micro / µm	(7) 10 – 280 (790)
Measuring range*) meso / µm	(15) 23 – 1,120 (3,170)

Precautions against:

- ✓ Blockage of the measuring gap, high dispersion rates possible
- ✓ Long run time

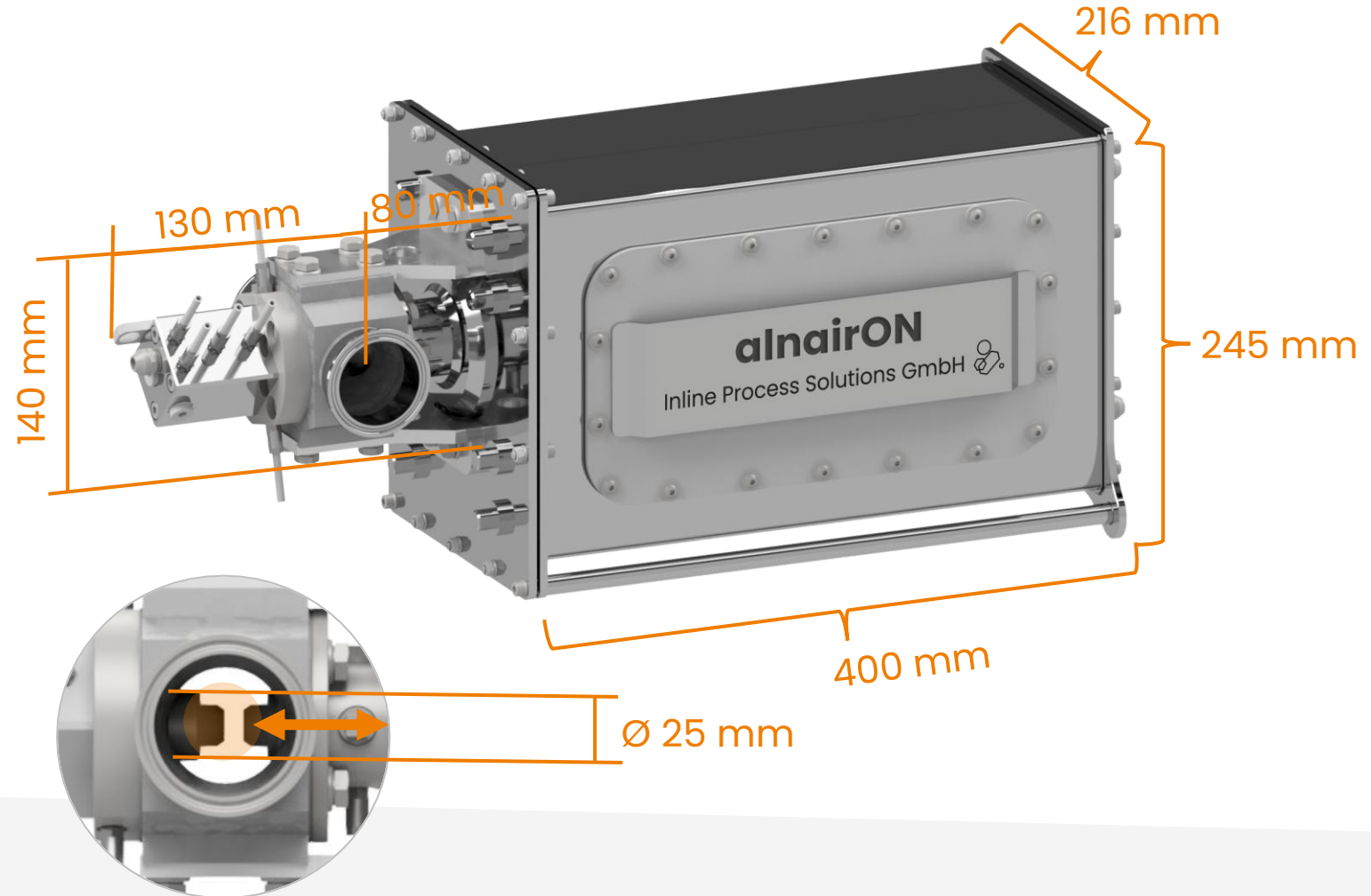
*) (lower detection limit) analysis limits (upper detection limit)



THROUGH FLOW SENSOR **alnairON**

Assembly space sensor

Length	600 mm
Weight	32 kg
Process access	DN50, Triclamp Ø53 x Ø50 mm (1.5 mm) DIN 32676-A
Volume measuring cell	Volume from flange to flange: 230 ml
Control cabinet	Rittal 500x500x300 3m 5m cable length

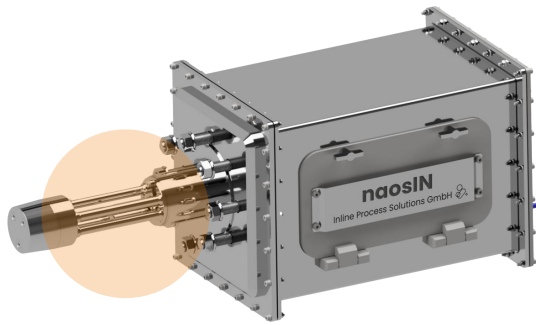




OUR SOLUTION

Image-based sensor & AI analysis

- Monitoring particle flows in real time and at the point of interest
- Precise optical image-based sensor technology combined with AI-driven image analysis



inline sensor

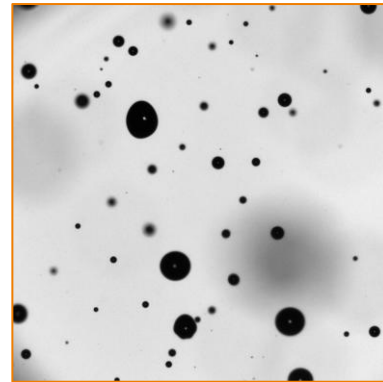
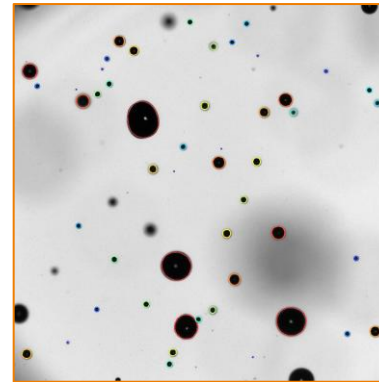
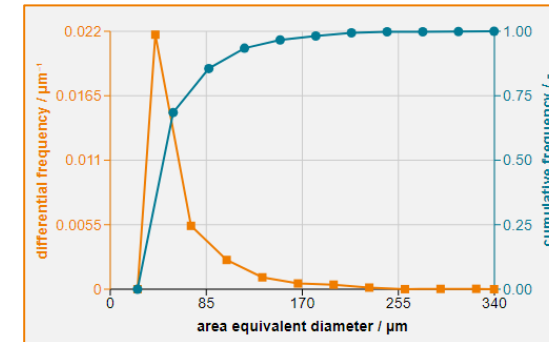


image data



AI-based particle detection



process data

- Monitoring
- Control
- Prediction
- Process optimization



VERSATILE APPLICATION

Use cases from the industrial production



EQUIPMENT ENGINEERING Chemical industry

- Quantification separator, filter, tray, nozzle
- Continuous QM
- Product validation



DISTILLATION / ABSORPTION Chemical & energy industry

- Entrainment control
- Less product loss
- QM & safety



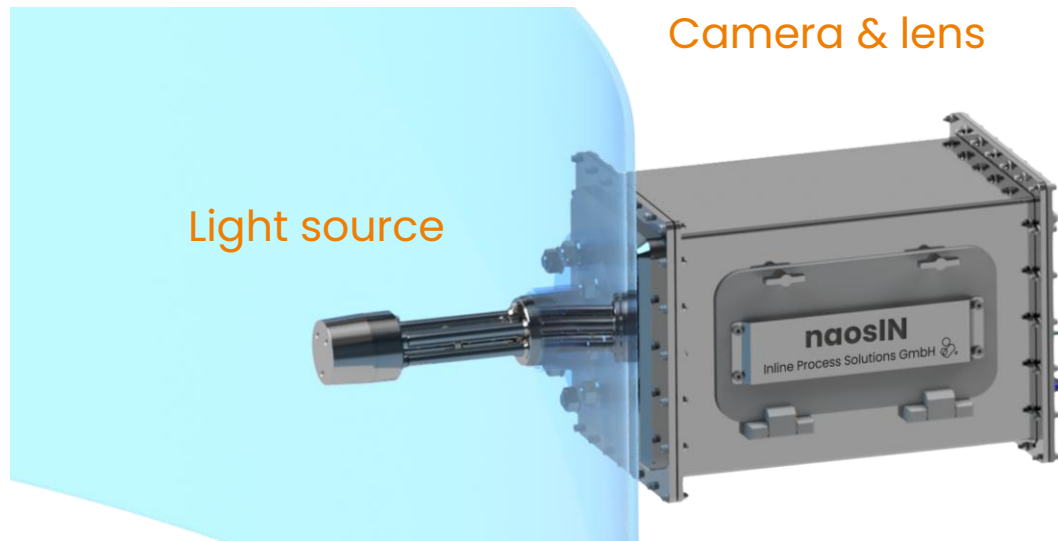
SPRAY DRYING Crop protection

- Shorter development time
- Product quality
- Less rejects



INSERTION PROBE SENSOR **naosIN**

Technology with transmitted light



Insertion probe sensor

Vessels & apparatus

> DN200

	naosIN
Temperature / °C	0 up to +121
Pressure / bar _a	0.1 up to 4.0
Media-contacting parts	1.4404, FKM, borosilicate
Measuring range ^{*)} micro / µm	(6) 9 – 380 (1,090)
Measuring range ^{*)} meso / µm	(15) 23 – 770 (2,180)

Precautions against:

- ✓ Droplets and turbidity on the glasses, high liquid loads possible
- ✓ Long run time

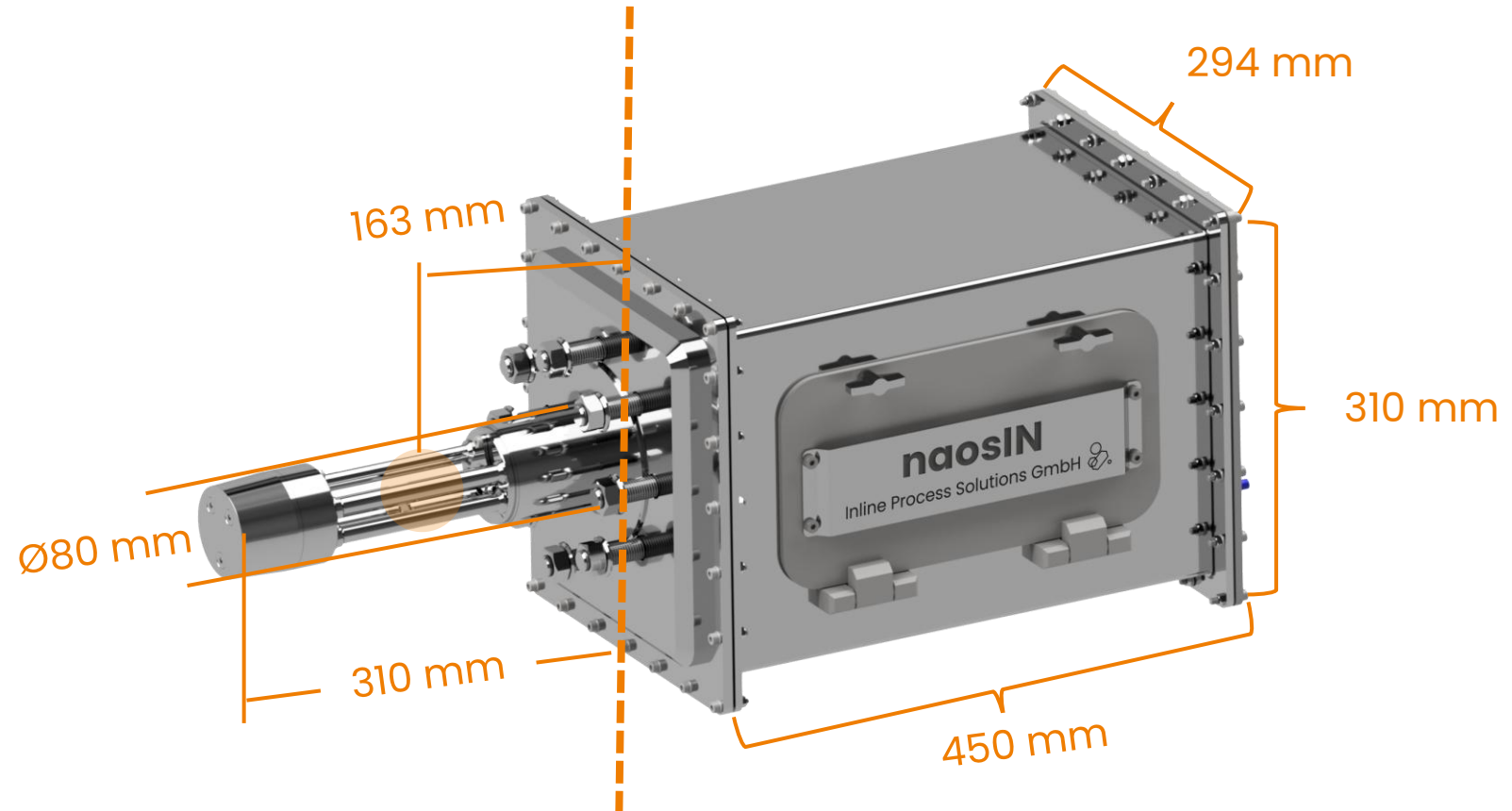
^{*)} (lower detection limit) analysis limits (upper detection limit)

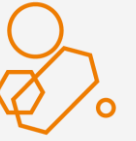


INSERTION PROBE SENSOR **naosIN**

Assembly space sensor

Length	760 mm
Weight	30 kg
Process access	DN80, PN10 Flange EN 1092-1 Typ01
Control cabinet	Rittal 500x500x300 3m 5m cable length





THE PROBLEM

Time-consuming evaluation of complex image data in everyday laboratory work

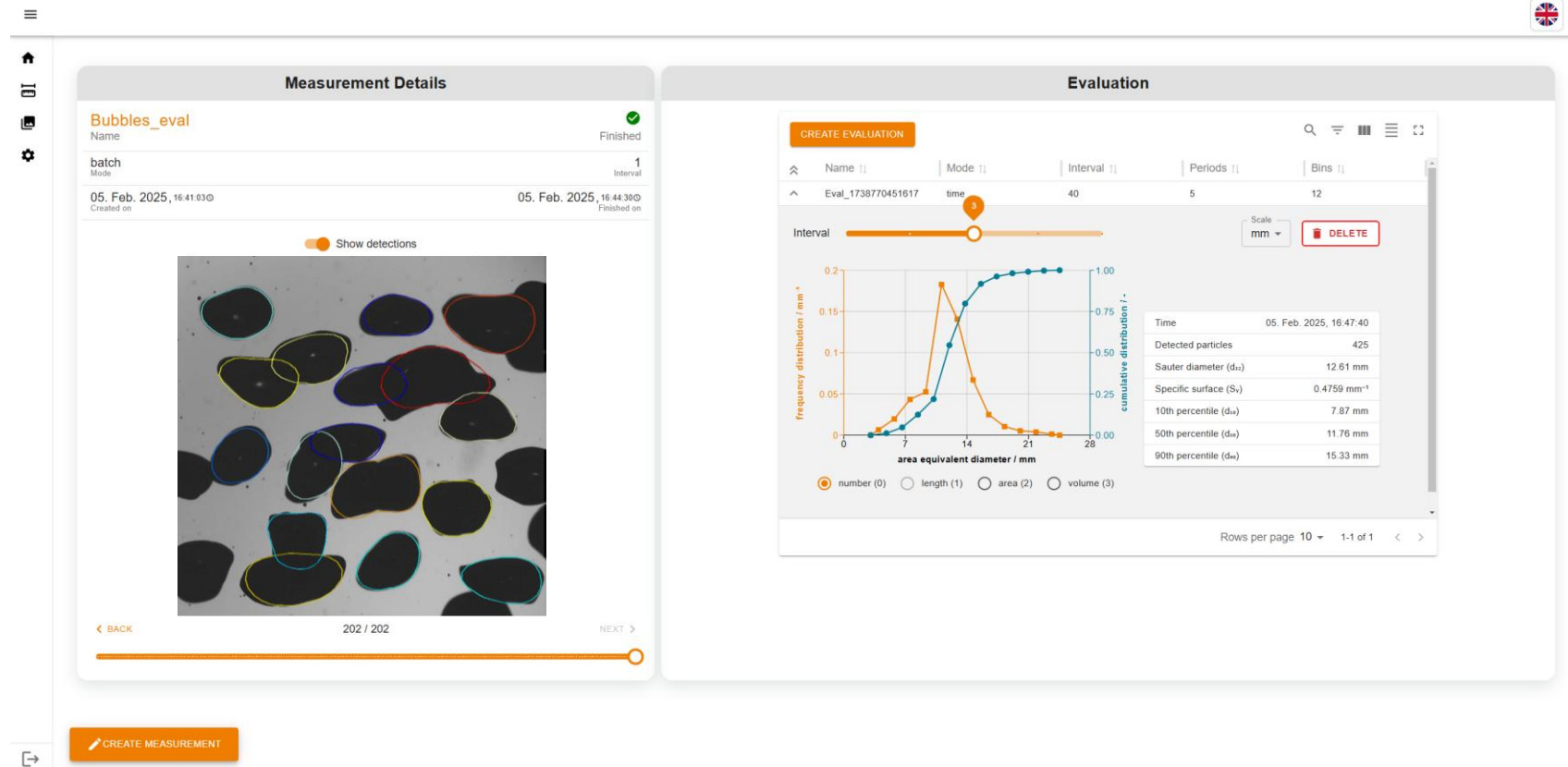
- Large amount of image data
- Complexity of the images
- Variety of images and target information
- Classic algorithms for image analysis reach their limits
- Image evaluation often manual and not automated
- High susceptibility to errors
- Poor reproducibility of results
- Image analysis is **more expensive**, **more time-consuming** and **less reliable** than it could be



WORKSPACE WITH AI-BASED ANALYSIS

Reliable evaluation of complex image data

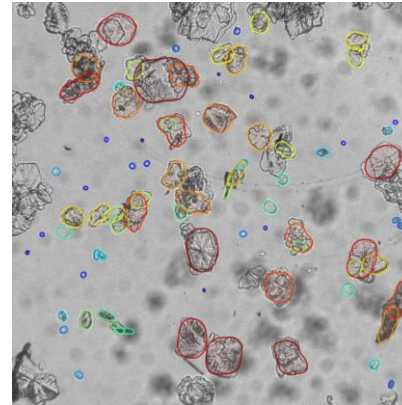
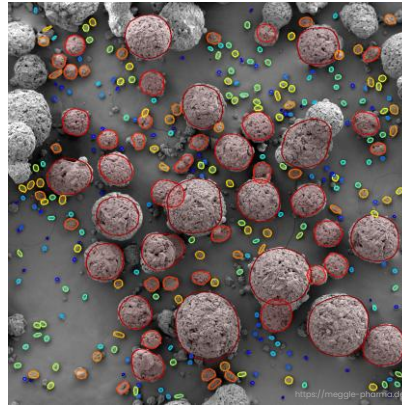
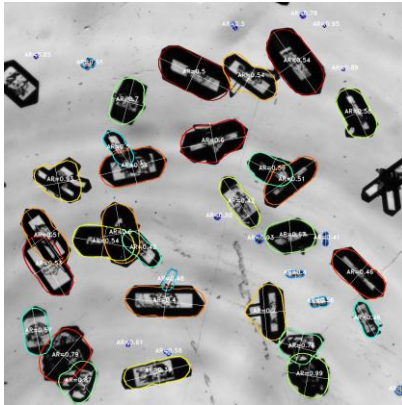
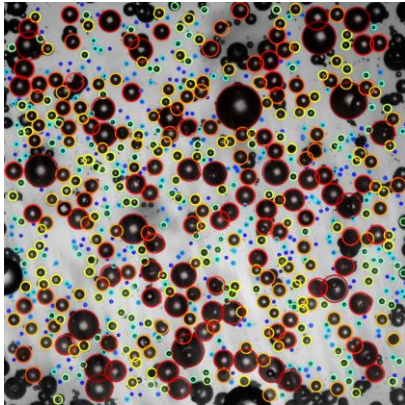
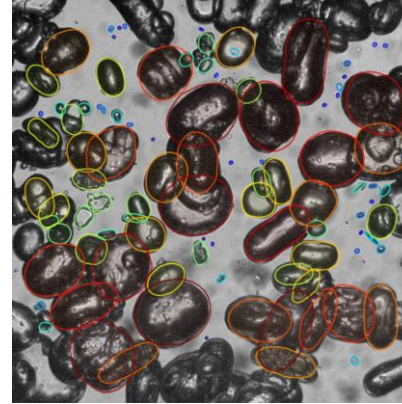
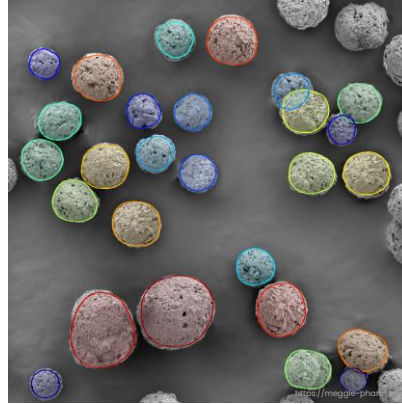
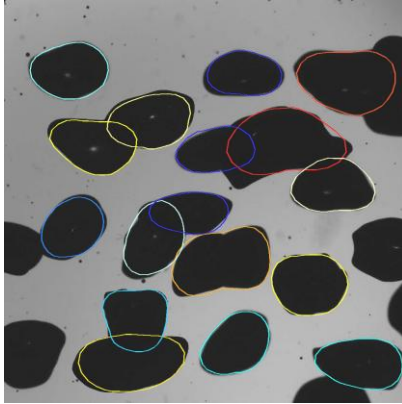
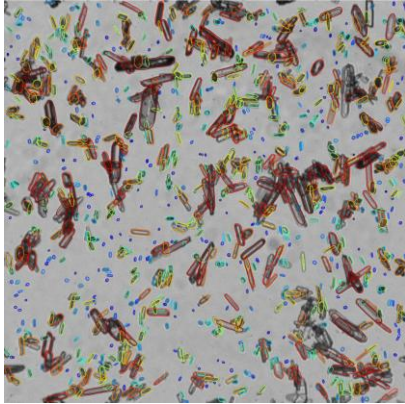
- Precise and fast particle size & shape
- Non-spherical particles, many overlaps, classification of different shapes
- Suitable for light and electron microscopes





EXAMPLES OF THE APPLICATION

Versatile use for every industry



- Water analysis
- Food analysis
- Pharmacy
- Biotechnology
- Building materials
- Material analysis
- ...

OUR OFFER

A solution that fits your requirements

Get familiar

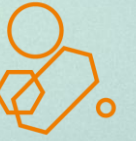
- Measuring campaign
- Samples quick check
- Image analysis quick check

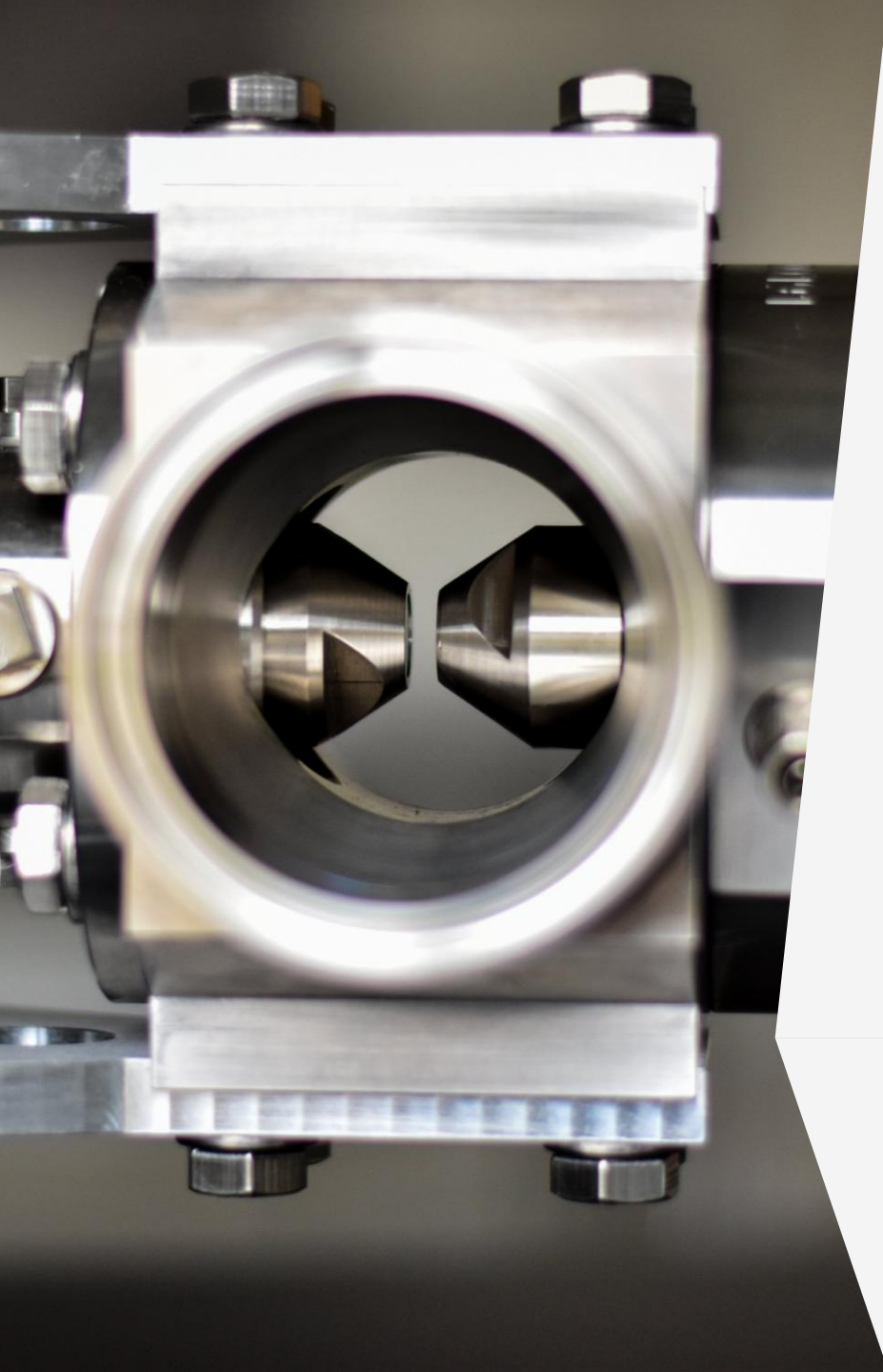
Try it out

- Rent hardware
- Image analysis by order

Use it regularly

- Buy hardware
- Licensing software





Contact

INLINE PROCESS SOLUTIONS

turn process data to value

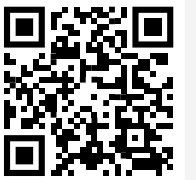
ANNE FRIEBEL

Dr.-Ing. | co-founder | Sales

☎ +49 173 273 4870

✉ anne.friebel@inline-process.solutions

ips



**SHAPE THE INTELLIGENT PRODUCTION OF
TOMORROW WITH US!**