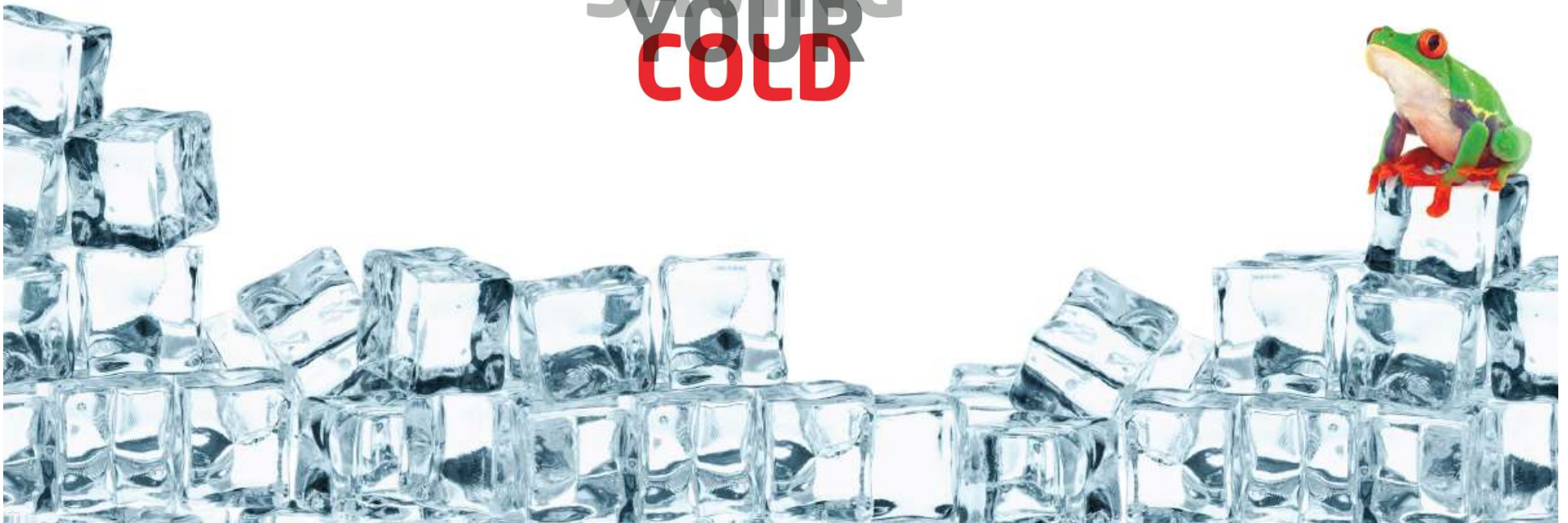




SAVING
YOUR
COLD



INTRODUCTION



CISAPLAST is specialized in design and manufacture glass doors for commercial refrigeration.

DYNAMISM

ABILITY

COMPETENCE

CISAPLAST is an esteemed partner of some of the most prestigious World Manufacturer of the refrigeration.



THE FACILITIES



4

production sites



HEADQUARTER: OFFICES AND DOOR PRODUCTION

In Suzzara 4700 covered m²



CISA2: MECHANICAL WORKING PROCEDURES

In Motteggiana 3000 covered m²

THE FACILITIES



4

production sites



CISA3: FRAME PRODUCTION

In Suzzara 3600 covered m²



CISA TERMINAL: LOGISTIC HUB

In Suzzara 3800 covered m²

SOME NUMBERS



145 *employees*



820 *doors/day*



4 *working weeks*

Standard delivery time

MAIN PRODUCTS: LT APPLICATIONS



MAIN PRODUCTS: LT APPLICATIONS



Low temperature systems (-25°C).

PANORAMA

FRAMES WITH ENERGY FREE GLASS



Full Glass system
with maximum
glass surface and
brand new
3H-ONE hinge,
patented
by Cisaplast.

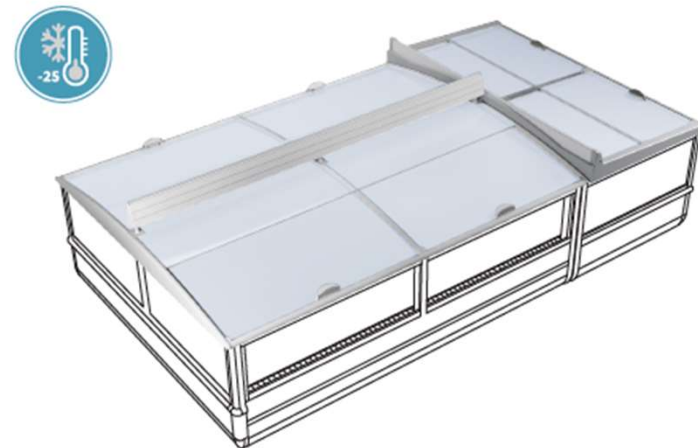
FEATURES

- Profiles in composite PVC and aluminium material
- Ultrabright insulated glass with triple glazing
- Heated frame with LED lighting
- Automatic 90° door locking system
- Full Glass Wide Vision
- Customized handles
- Full-height and combined doors available
- 3H-ONE hinge patented by Cisaplast

ASK FOR PANORAMA IGD FOR A CO-DESIGNED FRAME PROJECT

KEEP COOL®

RANGE OF LIDS FOR REFRIGERATED ISLANDS



Complete range of
patented Push-Pull
glass cover solutions.

FEATURES

- Structure in composite PVC
- 4 mm tempered single glass
- Low friction sliding
- Accessories for price profiles and lighting

- | 1 | KEEP COOL® CURVE 625 | 2 | KEEP COOL® CURVE 1250 | 3 | KEEP COOL® PLANE 625 |
|---|----------------------------|---|---------------------------|---|-------------------------|
| | Contemporary design | | Maximum visibility | | Great efficiency |
| | → Curved glass | | → Curved glass | | → Flat glass |
| | → 2/3 glass composition | | → 2/3 glass composition | | → 2/3 glass composition |

ALL MODELS ARE SUITABLE FOR ISLANDS, WALL UNITS, COMBI AND END CAPS

MAIN PRODUCTS: NT APPLICATIONS



MAIN PRODUCTS: NT APPLICATIONS



A wide range of solutions covering every technical requirement.
FOR VERTICAL CABINETS:

CLASS

ENTRY LEVEL SYSTEM



An affordable solution with a
profile framed door.

STYLE

PREMIUM SYSTEM



The elegance of a
screen-printed perimeter.

GLAM

FRAMELESS SYSTEM



The best look, with
vertical transparent spacers.

Every model is available with
different hinging systems.



GRT

Automatic gravity
closing system.



3H-ONE

Soft closing with our patented
mechanical hinge.



FSN

Hydraulic hinges for
the best performance.

MAIN PRODUCTS: NT APPLICATIONS



A wide range of solutions covering every technical requirement.
FOR SEMI-VERTICAL CABINETS:



A range of solutions designed for semi-vertical cabinets.
Choose CLASS, STYLE or GLAM for the aesthetic that fits your needs.



- Frame profile in **composite PVC and aluminium**
- **Double glazing** with low emission and high insulation glass

MAIN PRODUCTS: COLDROOMS



MAIN PRODUCTS: COLDROOMS



WALK IN frameless

FRAMES WITH WALK IN APPLICATION DOORS



No bottom profile

Brand new frame
and door system
for WALK IN
applications with
the new 3H-ONE
hinge, patented
by Cisaplast.

FEATURES

- Profiles in composite PVC and aluminium material
- Completely transparent glazing spacer in PMMA
- Double glazing with external low emission pane and gas inside, both panes made of tempered glass
- Automatic 90° door locking system
- 3H-ONE hinge patented by Cisaplast

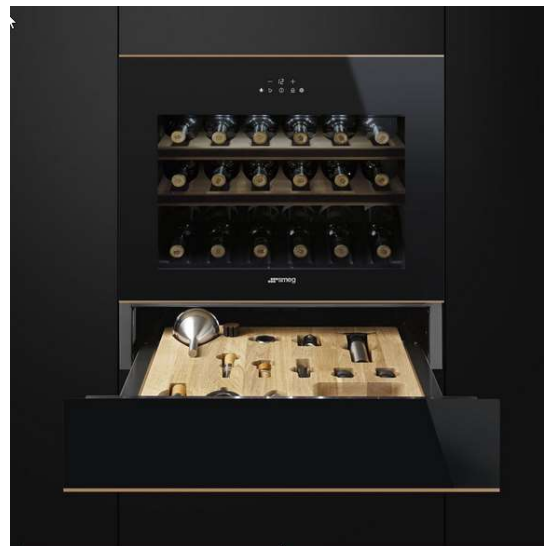
PRODUCTS: SPECIAL APPLICATIONS



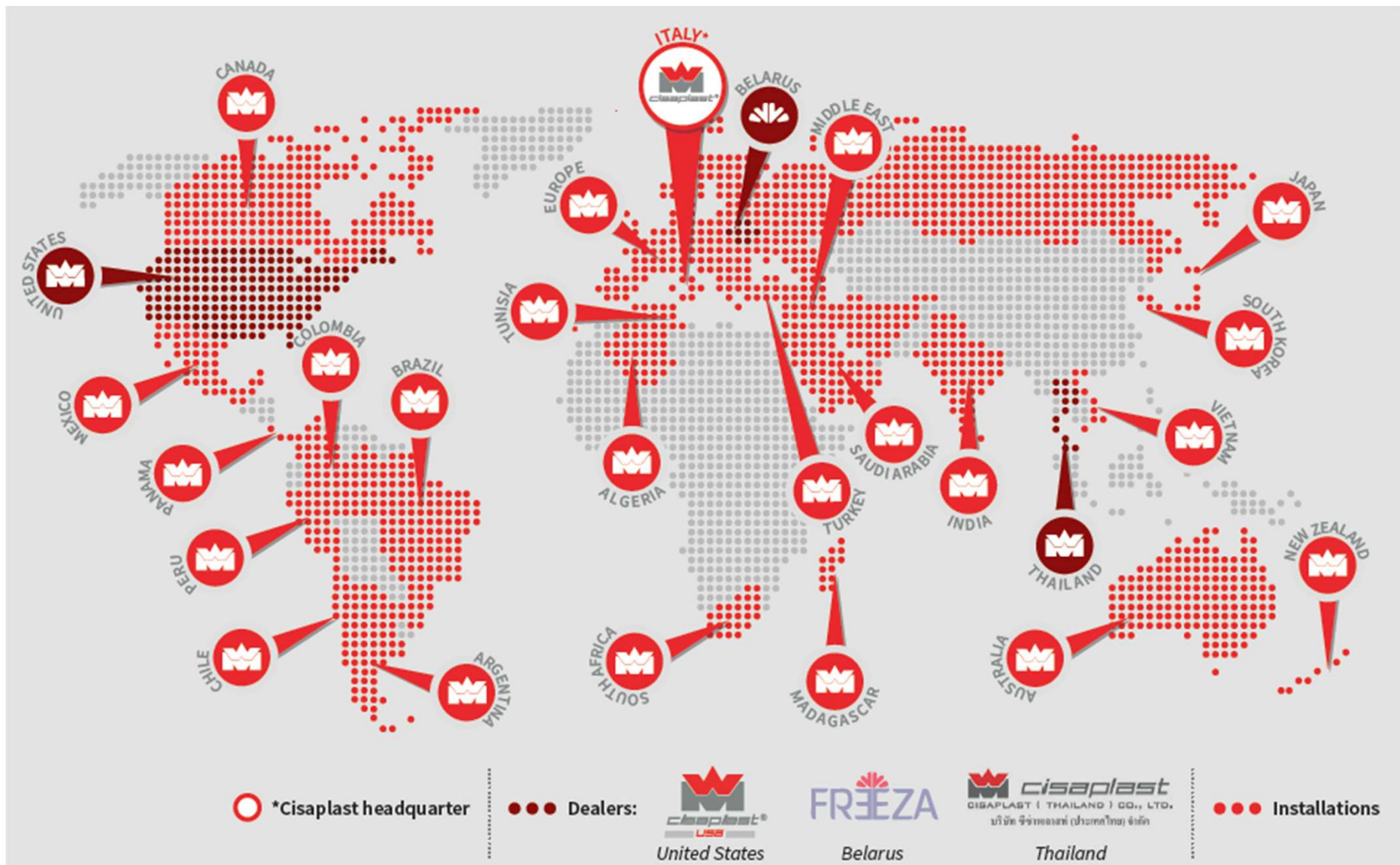
PRODUCTS



Special applications: vending machine, wine cellar and much more



WORLDWIDE



MISSION



After half of a century of hard work, we are leading players in our market. Our everyday attention is to **our customers**, to bring them unique products designed to reach the best performances, thanks to a strong and continuous **technical improvement** and to the experience of our **engineering team**.

*FOR FURTHER INFORMATIONS, PICTURES OF
INSTALLATIONS, QUOTATIONS AND ANY OTHER
ASSISTANCE, PLEASE CONTACT CISAPLAST SALES DPT*

