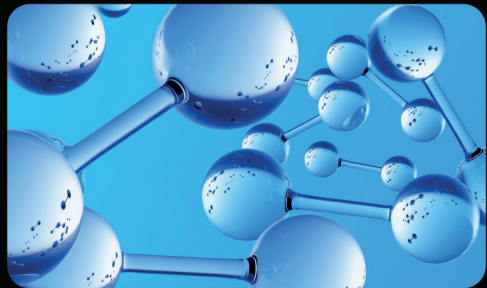


# A, B..... CBAM



Carbon Border Adjustment Mechanism

The **Carbon Border Adjustment Mechanism (CBAM)** regulation, effective as of **October 1, 2023**, impacts the importation of six major categories into the EU:

- Cement
- Steel
- Iron
- Aluminium
- Electricity
- Hydrogen

While some of these materials are easy to classify, **Steel, Iron, and Aluminium** often pose challenges. Common items like **screws, washers, bolts, nuts, and panels** — frequently imported as “spare parts” for equipment like air-conditioning units or refrigeration systems—may fall under CBAM’s scope, despite often being misclassified.

**Misclassification** of such items as “spare parts” breaches both **Customs Regulations** (incorrect classification) and **CBAM Regulations** (failure to report relevant imports). These errors can trigger investigations and hefty penalties.

## Are you compliant?

If you’re importing goods containing these materials, even as spare parts, you may be affected.

Ensure you’re following the right **tariff codes** and avoid costly mistakes by keeping up-to-date with CBAM regulations.

## We make compliance easy!

Let our team guide you through the complexities of CBAM and safeguard your business from compliance risks.

Don’t leave it to chance — reach out to our experts today.

**Contact us:**

Carbon@navistrade.co.uk