

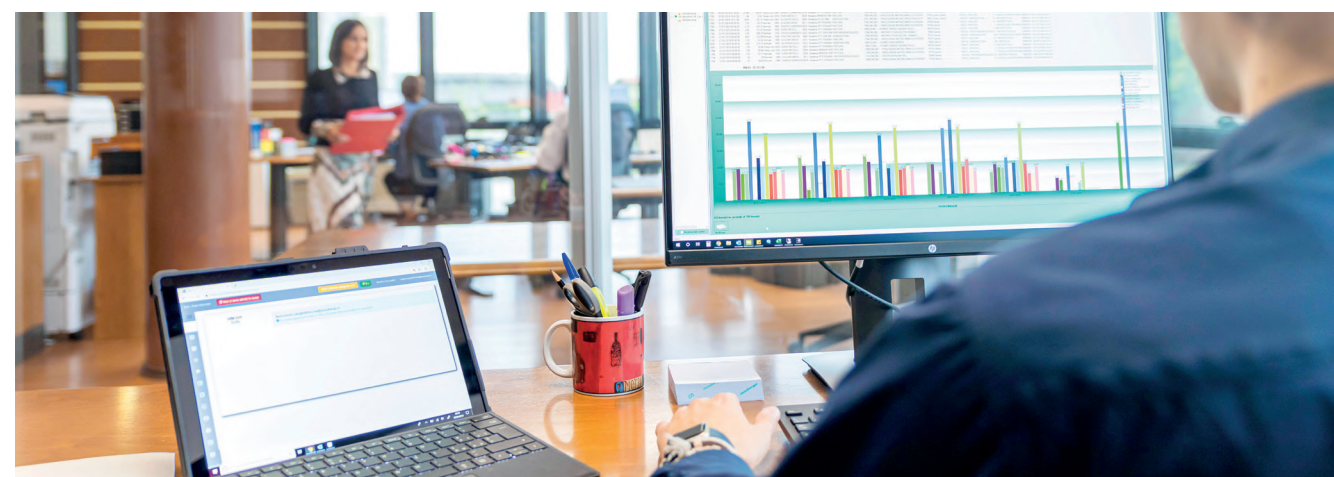


CUSTOMER CARE

Quality control is one of our strengths: working with us means developing a project that is monitored and optimized at every stage. Each component of the tool undergoes functional tests that allow us to verify its quality and certify the consistency with the needs expressed by the customer.

Specifically, we carry out cold and hot controls of the thermoregulation circuits and tightness checks of the cylinders. To guarantee high quality controls we have integrated in our machinery park a latest generation implement that carry out dimensional checks on the casting parts and monitor the workpiece in real time, putting it in relation with previously developed calculations.

To achieve maximum efficiency in the management of the manufacturing process, we work with the organizational method based on the dynamics BPM (Business Process Management). The digital systems based on 4.0 logic allow each operator to be constantly updated on the status of the orders in which he is involved, simplifying the organization of activities and the communication with suppliers and customers.



SCS

High Quality Italian Moulds



High Quality Italian Moulds

SCS srl
Via Milano, 12
25037 Pontoglio (Bs) Italy
T. +39.030.7470513
info@scsstampi.it . www.scsstampi.it



www.scsstampi.it



COMPANY PRESENTATION



Since 1981 we have been designing and producing die-casting dies for aluminum, magnesium and zamak, gravity casting and low pressure tools. Professionalism and high qualitative standards have allowed us to cooperate with the biggest automotive companies all around the world, becoming a reference point in the European market for the production of high technology moulds. Our clients choose us for our innovative solutions, accuracy and punctuality.



PRODUCTS AND APPLICATIONS

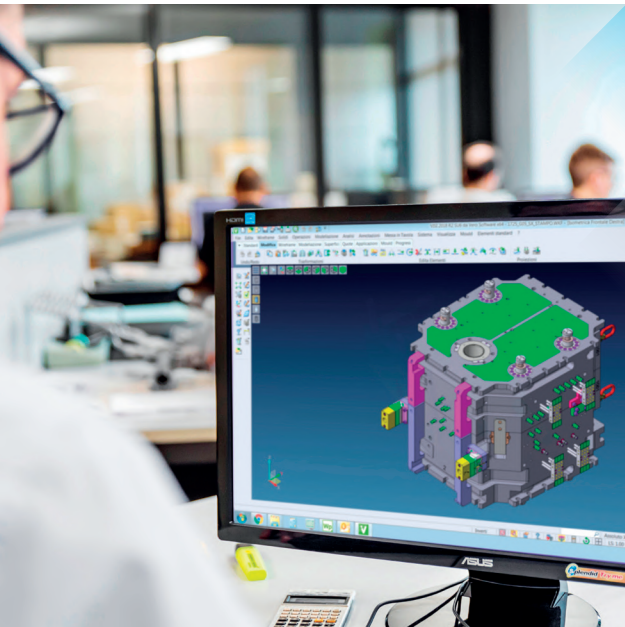
We are specialized in the manufacturing of tools for the automotive industry for the following application fields:

- **POWERTRAIN** (gearboxes, cylinder blocks, engine flanges, overheads, clutches, hydrosteering and steering boxes)
- **STRUCTURAL PARTS** (crossbeams, supports, support flanges, cupolas and consoles)
- **TRUCK** (transmission systems, flywheel positions, oil pans, crankcases, overhead camshafts and suspension supports)

Furthermore we produce moulds for the **INDUSTRIAL**, **ELECTRIC** and **LIGHTING** field. Thanks to the versatility of our machinery park and to the competences of our staff, we can produce small, medium and big moulds, up to a maximum of 55 tons.

ENGINEERING, RESEARCH AND DEVELOPMENT

Optimization, efficiency and high quality are the key concepts that underlie the development of each of our projects. We support our customers as only partner in the manufacturing of tools of any size, from co-engineering to production. Starting from the optimization of the initial design, we define the workload and plan the production schedule, to provide in the shortest time possible a finished mould of the highest quality ready to be used. Our engineering staff designs our tools using VISI CAD and CATIA V5 software. For die-casting simulations and temperature optimizations we use ProCAST and CASTLE.



QUALITY AND ENVIRONMENT

Our management is certified **ISO9001** and **ISO14001**.

