



**深圳市宇锡科技有限公司**

SHENZHEN YOUSEE TECHNOLOGY CO., LTD.

**PROFESSIONAL DISPLAY & TOUCH MANUFACTURER**

From Vision to Interaction, We Make It Real.



**深圳市宇锡科技有限公司**  
SHENZHEN YOUSEE TECHNOLOGY CO., LTD.

TEL: +86 0755-23055505

FAX: +86 0755-23055505

Web: [www.youseelcd.com](http://www.youseelcd.com)

E-mail: [sales@youseelcd.com](mailto:sales@youseelcd.com)

Addr: 2F bldg D and 5F bldg C, Xixiang Hong Zhu Yong Qi Sci. Park,  
Baoan District, Shenzhen, China 518102



## COMPANY PROFILE

### About Yousee >>>

Founded in 2008, Shenzhen Yousee Technology Co., Ltd. is a professional manufacturer of display and touch solutions, specializing in TFT-LCD and OLED displays, touch panels, and integrated display solutions.

With state-of-the-art facilities and advanced production lines, we produce up to 800,000 display modules and 650,000 touch panels per month, ensuring consistent quality, reliable supply, and on-time delivery to customers worldwide.



## Quality You Can Trust

At Yousee, quality comes first.

We are certified to ISO 9001, ISO 14001, GJB 9001C, and IATF 16949, reflecting our commitment to rigorous quality control, sustainable manufacturing, and continuous improvement.

Guided by “Quality First, Customer First,” we deliver products that consistently meet and exceed customer expectations in performance, reliability, and durability.

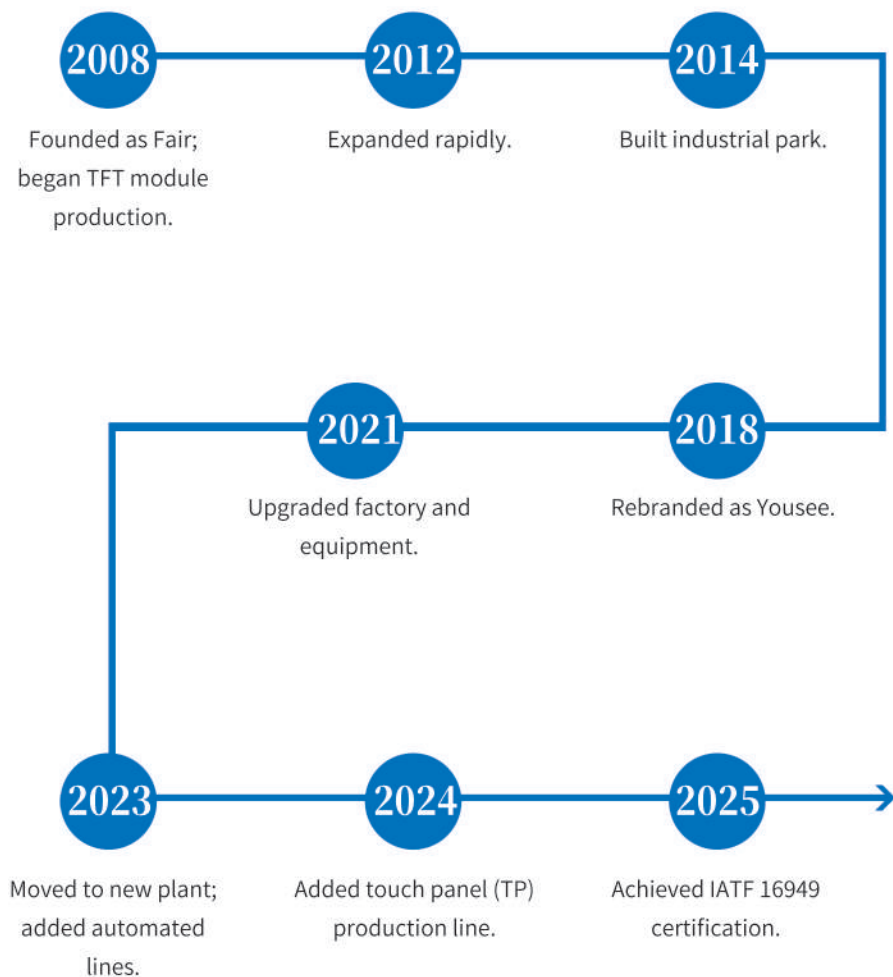


## Innovation and Flexibility

Driven by a highly experienced R&D team, Yousee provides flexible customization and end-to-end display solutions tailored to diverse applications — including consumer electronics, industrial control, automotive systems, military equipment, and other specialized sectors. We combine technical expertise with innovative design to deliver smart, reliable, and customized display experiences.



## Milestones

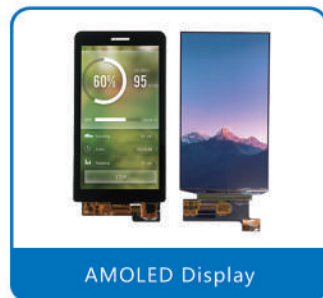


## Global Partners and Customers





## PRODUCT CENTER



## Application Market >>>



## TFT LCD display

Type	Size	Resolution	TN/IPS	A.A Size(mm)	Outline(mm)	Brightness	Interface	Touch panel
Round	1.1"	240RGB*240	IPS	Φ=27.79	30.59*32.98*1.56	300	MCU/ SPI	Tooling Pending
	1.28"	240RGBx240	IPS	Φ=32.40	35.6*38.1*1.64	300	MCU/ SPI	CTP optional
	1.66"	400RGB*400	IPS	Φ=39.84	42.94*45.87*2.15	220	MIPI	CTP optional
	2.1"	480RGB*480	IPS	Φ=53.28	56.18*59.71*2.30	300	MIPI/ SPI+RGB	CTP optional
	2.47"	480RGB*480	IPS	Φ=62.64	69.19*71.74*2.45	400	MIPI	Tooling Pending
	2.76"	480RGB*480	IPS	Φ=70.128	73.03* 76.48*2.26	500	MIPI/ SPI+RGB	CTP optional
	3.4"	800(RGB) *800	IPS	Φ=87.6	94.9* 96.9*2.25	500	MIPI	CTP optional
	4.0"	720(RGB) *720	IPS	Φ=101.52	105.6* 109.87*2.09	300	MIPI/ SPI+RGB	CTP optional
Square	5.0"	1080RGB*1080	IPS	Φ=127.008	136.531*132.208*1.98	400	MIPI	CTP optional
	1.3"	240RGB*240	IPS	23.40*23.40	26.20*29.22*1.94	300	MCU/ SPI	Tooling Pending
	1.4"	240RGB*240	IPS	25.2*25.2	28*31.35*1.65	1000	MCU/ SPI	Tooling Pending
	1.54"	240RGB*240	IPS	27.72*27.72	31.52*33.72*1.85	250	MCU/ SPI	CTP optional
	1.54"	320RGB*320	IPS	27.74*27.74	31.52*33.72*1.50	300	MIPI	CTP optional
	3.4"	480RGB*480	IPS	60.48* 60.48	70.45* 70.32*1.89	300	SPI+RGB	Tooling Pending
	3.92"	320RGB*320	IPS	71.14* 69.82	75.66* 78.23* 2.24	300	MCU/ SPI	CTP optional
	4.0"	480RGB*480	IPS	71.86*70.1	74.83*78.98*2.18	300	MIPI/ SPI+RGB	CTP optional
Strip	4.0"	720RGB*720	IPS	71.93*71.93	78.98*74.83*1.50	300	MIPI/ SPI+RGB	CTP optional
	0.96"	80RGB*160	IPS	10.80*21.27	13.70*28.10*1.97	400	4SPI	Tooling Pending
	1.90"	170RGB*320	IPS	22.70*42.72	25.80*49.72*1.4	300	3SPI+RGB	CTP optional
	2.23"	200(RGB) * 480	IPS	21.72* 52.42	23.72*57.79*2	250	MIPI	Tooling Pending
	2.9"	376*(RGB) * 960	IPS	26.51* 67.68	31.2* 76.6*2.11	300	SPI+18BIT RGB	Tooling Pending
	3.2"	320RGB×820	IPS	26.4*67.65	31.2*76.6*2.4	300	MIPI/ SPI+RGB	CTP optional
	4.0"	400(RGB)*960	IPS	39.18*94.03	42.9*102.08*2.23	400	MIPI/ SPI+RGB	CTP optional
	4.58"	320RGB*960	IPS	36.77* 110.3	40.37* 117.9*2.08	350	MIPI/ SPI+RGB	CTP optional
	6.86"	480RGB*1280	IPS	60.22*160.59	66.60*181.00*4.50	500	MIPI	CTP optional
	6.9"	280RGB* 1424	IPS	33.6* 170.88	38.2* 181.47*3.4	300	MIPI	Tooling Pending
	7.84"	400RGB*1280	IPS	59.40*190.08	67.80*205.78*4.75	500	MIPI	CTP optional
	8.8"	480(RGB)*1920	IPS	54.72*218.88	64.0*231.0*6.1	800	MIPI	CTP optional



## TFT LCD Display

Type	Size	Resolution	TN/IPS	A.A Size(mm)	Outline(mm)	Brightness	Interface	Touch panel
Landscape	2.0"	320RGB*240	IPS	40.80*30.60	46.1*40.96*2.53	300	SPI+RGB	Tooling Pending
	3.5"	320RGB*240	IPS	70.08*52.56	76.90*63.90*2.85	350	RGB 24bit	CTP/ RTP optional
	3.5"	320RGB*240	TN	70.08*52.56	76.90*63.90*3.1	350	MCU/ RGB/ SPI	CTP/ RTP optional
	3.5"	640RGB*480	IPS	70.08* 52.56	76.90*63.90*3	300	MIPI/ SPI+RGB	CTP/ RTP optional
	4.3"	480RGB*272	IPS	95.04*53.86	105.50*67.20*3.00	500	MCU/ SPI/ RGB 24bit	CTP/ RTP optional
	4.3"	800RGB*480	IPS	95.04*53.86	105.4* 67.15*3.2	800	LVDS/ RGB 24bit	CTP/ RTP optional
	5.0"	800RGB*480	IPS	108*64.8	120.7*75.8*2.9	600	LVDS/ RGB 24bit	CTP/ RTP optional
	7.0"	800RGB*480	TN	154.08*85.92	165*100.00*5.70	450	RGB	CTP/ RTP optional
	7.0"	800RGB*480	TN	153.84* 85.63	165*100*3.5	550	40pin RGB	CTP/ RTP optional
	7.0"	1024RGB*600	IPS	154.21*85.92	165*100*2.8	350	LVDS/ MIPI/ RGB	CTP/ RTP optional
	8.0"	1024RGB*768	IPS	162.05*121.54	174*136*2.45	260	LVDS	Tooling Pending
	9.0"	1024RGB*600	TN	196.608*114.15	210.7*117.15*x3.3	220	RGB	Tooling Pending
	10.1"	1024RGB*600	TN	222.72*125.28	235*143*5	200	LVDS	Tooling Pending
	10.1"	1280RGB*800	IPS	216.96*135.60	229.22*149.06*2.6	480	LVDS	CTP optional
	11.6"	1920RGB*1080	IPS	256.32*144.18	263.4*157.22*2.55	220	eDP	CTP optional
	13.3"	1920RGB*1080	IPS	293.76 x 165.24	305.2*178.1*2.6	300	eDP	CTP optional
	14"	1920RGB*1080	IPS	308.16*173.34	317.16*186.54*4.5	1000	eDP	CTP optional
	15.6"	1920RGB*1080	IPS	344.16 x 193.59	350.72*214.26*2.8	250	eDP	CTP optional
	17.3"	1920RGB*1080	IPS	381.888*214.812	389.888*238.312*3.3	500	eDP	CTP optional
	18.5"	1366*3RGB*786	IPS	409.8*230.4	430.4*254.6*7.1	250	Lvds	CTP optional
	21.5"	1920RGB*1080	IPS	476.64*268.11	495*291*7.5	250	Lvds	CTP optional
Vertical	1.69"	240RGB*280	IPS	27.97*32.63	30.7*37.43*1.6	300	SPI	Tooling Pending
	1.77"	128RGB*160	TN	28.032*35.04	34* 42.94*2.25	280	SPI 4wire	Tooling Pending
	2.0"	240RGB*320	IPS	30.60*40.80	34.6* 47.83*1.95	280	SPI	CTP optional
	2.4"	240RGB*320	TN/IPS	36.72*48.96	42.72*60.26*2.45	250	MIPI/ SPI/ MCU	CTP/ RTP optional
	2.4"	480RGB*640	IPS	36.72*48.96	41.72* 60.26*2.15	300	MIPI	Tooling Pending
	2.8"	240RGB*320	TN/IPS	43.20*57.60	50.00*69.20*2.45	300	MIPI/ SPI/ MCU	CTP/ RTP optional
	2.8"	480RGB*640	IPS	43.20*57.60	50* 69.2*2.34	300	MIPI	CTP/ RTP optional
	3.0"	360RGB*640	IPS	36.72(W)* 65.28 (H)	42.64*74.51*2.4	300	MIPI	Tooling Pending
	3.2"	240RGB*320	TN	48.6*64.8	53.6* 76*2.45	TBD	MCU	CTP optional
	3.5"	320RGB*480	TN/IPS	48.96*73.44	54.48* 84.71*2.3	300	MCU/ RGB/ SPI	CTP/ RTP optional
	3.5"	480RGB*640	IPS	53.28*71.04	64.00*85.00*3.00	300	SPI+ RGB	Tooling Pending
	3.95"	320RGB*480	TN	55.68*83.52	60.08*94.57*2.25	300	SPI	CTP optional
	4.0"	640RGB*1136	IPS	49.92*88.61	53.80*96.75*1.75	300	MIPI	CTP optional
	4.1"	720RGB*1280	IPS	51.19(W)* 91(H)	54.14* 99.11*1.3	350	4lane MIPI	Tooling Pending
	4.3"	480RGB*800	IPS	56.16(W)* 93.6(H)	60.86* 104.5*2.1	280	MIPI	Tooling Pending
	5.0"	1080RGB*1920	IPS	61.64*109.58	64.24* 117.6*1.54	290	4lane MIPI	CTP optional
	5.7"	1080RGB*2160	IPS	64.15* 128.3	71.65* 151.16*3.03	350	MIPI	CTP optional
	6.3"	1080RGB*2340	IPS	62.1* 110.4	73.54* 162.24*2.66	450	MIPI	In-cell CTP optional
	7.0"	720RGB*1280	IPS	86.94*154.56	95.15*177.75*3/5.4	300	MIPI	CTP optional
	8.0"	800RGB*1280	IPS	107.64*172.22	114.60*184.10*2.6	350	MIPI	CTP optional
	10.1"	800RGB*1280	IPS	135.36*216.58	143.00*228.60*2.5	300	MIPI	CTP optional



## AM-OLED Display

Type	Size	Resolution	A.A Size(mm)	Outline(mm)	Brightness	Interface	Touch panel
Circular	1.19"	390RGB*390	φ30.42	33.99*33.62*0.7	350	MIPI/QSPI	On-cell CTP optional
	1.43"	466RGB* 466	φ36.348	39.552*39.552*2.36	380	QSPI	CTP optional
Landscape	11.2"	2560RGB*1536	244.22*146.53	249.22*154.08*1.46	450	MIPI 2-port D-D-PHY	On-cell CTP optional
	13"	2560RGB*1440	286.6944*161.2656	292.6944*168.2656*2.096	800	eDP 1.2	On-cell CTP optional
	14"	2880RGB*1800	30.824*188.640	305.324*195.99*1.05	400	eDP 1.4A	On-cell CTP optional
	15.6"	3840RGB*2160	344.2176*193.6224	348.22*201.62*1.022	440	eDP 1.4b	Tooling Pending
Vertical	1.1"	126RGB*294	10.962 x25.578	12.96*30.94*0.95	200	3-wire SPI/4-wire SPI	CTP optional
	1.41"	320RGB*360	23.84x26.82	26.04x31.78*0.78	350	MIPI	On-cell CTP optional
	1.78"	368RGB*448	28.7*34.94	30.6*37.99*0.8	350	MIPI/SPI	On-cell CTP optional
	2.4"	450RGB*600	36.72*48.96	38.72*51.56*0.9	800	SPI/MCU/MIPI	CTP optional
	2.95"	1080RGB*1200	50.11*55.68	52.91*62.58*0.65	300	MIPI	CTP optional
	4.1"	568RGB*1232	43.55*94.47	45.65*97.22*0.752	280	MIPI	On-cell CTP optional
	5.0"	720RGB*1280	61.88*110.02	64.12*116.72*0.84	400	MIPI	On-cell CTP optional
	5.1"	1080RGB*1920	63.007*112.992	72.6*142.7*2.71	337	MIPI	On-cell CTP optional
	5.44"	1080RGB*1920	67.82*120.58	69.74*126.6*0.82	350	MIPI	On-cell CTP optional
	6.01"	1080RGB*2160	68.256*136.512	70.066*142.2972*0.773	430	MIPI	On-cell CTP optional
	6.39"	1080RGB*2340	68.04*147.42	76.64*161.62*1.54	400	MIPI	On-cell CTP optional
	7"	1080RGB*1920	87.1344*154.9056	889.1344*160.9056*1.095	800	MIPI	On-cell CTP optional
	12.6"	1600RGB*2560	271.4112*169.632	275.411*175.232*0.902	400	MIPI	On-cell CTP optional

## Featured Display >>>

Yousee's specialty displays are engineered to tackle real-world challenges, boost device performance, and meet diverse application needs. Each solution is thoughtfully crafted to provide reliability, clarity, and an exceptional user experience across diverse applications.

Our solutions include:



## Transflective Display – Readable outdoors, energy-saving indoors

Size	PN	Resolution	TN/IPS	A.A Size(mm)	Outline(mm)	Brightness	Interface	Touch panel
2.0"	YX20023A	320RGB*240	IPS	40.8*30.6	46.1*40.96*2.53	200	16BIT MCU	Tooling Pending
2.0"	YX20035A	240(RGB)*320	TN	30.6*40.8	38.52*52.74*2.4	250	16BIT MCU	Tooling Pending
2.4"	YX24073A	240(RGB)*320	IPS	36.72*48.96	42.72*60.26*2.2	200	MIPI	Tooling Pending
2.8"	YX240320-291	240(RGB)*320	TN	43.20*57.60	50.00*69.20*2.85	200	MCU/SPI/RGB	Tooling Pending
5.0"	YX50098A	800RGB*480	TN	108*64.8	120.7*75.9*2.95	200	16/18/24BIT RGB	Tooling Pending

## High-Brightness Display – See clearly, even in direct sunlight

Size	Resolution	TN/IPS	A.A Size(mm)	Outline(mm)	Brightness	Interface	Touch panel
4.3"	480(RGB)*272	IPS	95.04*53.856	105.5*67.2*3.0	1000	RGB	CTP optional
5.0"	1080(RGB)*1920	IPS	61.88*110.02	69.9*122*2.65	1000	MIPI	CTP optional
7.0"	1200(RGB)*1920	IPS	94.5*151.2	111.06*166.08*3.26	2000	MIPI	Tooling Pending
8.0"	1200(RGB)*1920	IPS	107.64*172.22	130.64*195.23*5.7	1500	MIPI	CTP optional
10.1"	1200(RGB)*1920	IPS	135.36*216.58	159.68*249.58*5.0	1000	MIPI	CTP optional

## Wide-temperature displays – Works in Heat. Survives in Cold.

Size	Resolution	TN/IPS	A.A Size(mm)	Outline(mm)	Interface	Working temp	Storage temp	Touch panel
6.8"	800*480	IPS	148.08*88.85	166.60*105.80*7.30	RGB	-30~85	-40~90	Tooling Pending
8.8"	1280*480	IPS	209.28*78.48	215.28*88.28*4.5	LVDS	-30~85	-40~90	Tooling Pending
8.99"	1280*720	IPS	198.912*111.888	225.5*140.77*8.448	LVDS	-30~85	-40~90	Tooling Pending
10.24"	1920*720	IPS	243.65*91.37	283.56*130.94*9.46	LVDS	-30~85	-40~90	Tooling Pending
12.8"	1920*1080	IPS	283.392*159.408	298.90*178.25*7.45	LVDS	-40~85	-40~90	Tooling Pending
15.6"	1920*1080	IPS	193.59*344.16	211.6*367.2*8.04	LVDS	-30~85	-40~90	Tooling Pending

## QSPI COF interface solutions – for seamless system integration

Yousee's QSPI COF reduces pins and wiring for simpler assembly, compact designs, and reliable performance. Perfect for seamless integration into your products, speeding up development and improving system reliability.



## EMI-shielded designs – Stable performance. Zero interference.

Yousee's EMI-shielded displays minimize electromagnetic interference, ensuring reliable operation, smooth performance, and enhanced system stability—perfect for industrial, automotive, and military applications.



## High-color-gamut display – delivering vibrant and accurate visuals

Yousee's high-color-gamut displays deliver rich, true-to-life colors, ensuring eye-catching visuals and an immersive user experience—ideal for fields with high color-accuracy requirements.



Original



Level up

## Thermally 3D bent cover glass – sleek, durable, and premium design

Yousee's 3D bent cover glass offers smooth curves, robust protection, and a premium look, enhancing both device aesthetics and user experience.

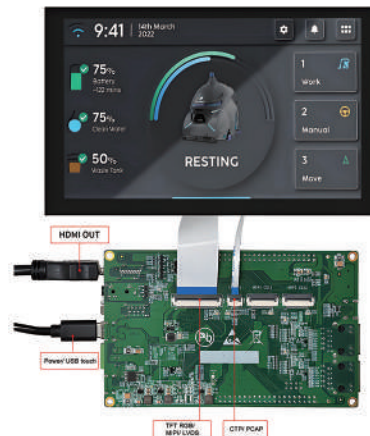


## Display solution >>>

Yousee's integrated display solutions help customers accelerate product development, shorten development cycles, and save costs, while ensuring system stability and high-quality display performance. Each solution is carefully engineered for ready-to-use integration, stable performance, and outstanding user experience, providing customers with a complete, one-stop display solution.

## HDMI Display Solution – plug-and-play HD video for easy multimedia use

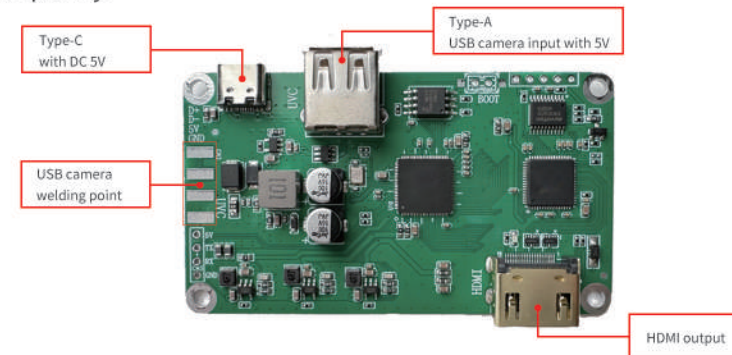
Yousee's HDMI adapter converts HDMI signals to MIPI, RGB, LVDS, and other display interfaces, delivering easy, compatible integration across smart terminals, industrial control, HMI, educational, and multimedia devices.



Size	Display Type	Resolution	A.A Size(mm)	Outline(mm)	Brightness	Interface	Touch panel
2.1"	IPS TFT(Round)	480RGB*480	Φ=53.28	56.18*59.71*2.30	300	HDMI	USB TOUCH/ CTP
3.5"	IPS TFT	320RGB*240	70.08*52.56	76.90*63.90*2.85	350	HDMI	Tooling Pending
4.3"	IPS TFT	480RGB*272	95.04*53.86	105.50*67.20*3.00	500	HDMI	Tooling Pending
5"	IPS TFT	800RGB*480	108*64.8	120.7*75.8*2.9	600	HDMI	Tooling Pending
5"	IPS TFT	720RGB*1280	61.88*110.02	64.12*116.72*0.84	350	HDMI	USB TOUCH/ CTP
5"	AMOLED(Round)	1080RGB*1080	Φ=127.008	136.531*132.208*1.98	400	HDMI	USB TOUCH/ CTP
5.5"	IPS TFT	720RGB*1280	68.04*120.96	77.80*145*2.94	350	HDMI	USB TOUCH/ CTP
7"	IPS TFT	1024RGB*600	154.21*85.92	165*100*2.8	450	HDMI	USB TOUCH/ CTP
10.1"	IPS TFT	1200RGB*1920	135.36*216.58	145.7*231.16*4.15	600	HDMI	USB TOUCH/ CTP
13.3"	IPS TFT	1200RGB*1920	293.76*165.24	307.55*1185.62*4.85	265	HDMI	USB TOUCH/ CTP

## UVC Camera Driver Solutions – optimized support for USB camera applications

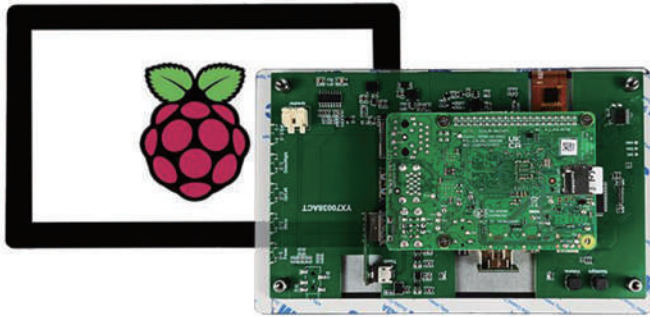
The UVC (USB Video Class) camera driver is a video device standard based on the USB protocol, supporting multi-platform plug-and-play without the need for additional driver installation. Through this standard, users can quickly enable camera functionality on systems like Windows, Linux, and Android, significantly reducing system compatibility risks and development complexity.





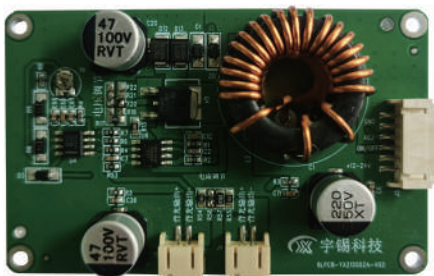
## Raspberry Pi Display Solutions – seamless integration with Raspberry Pi platforms

Yousee's Raspberry Pi driver solution enables easy connection to larger, higher-resolution displays via various LCD interfaces, supporting DIY projects, industrial panels, smart home devices, and multimedia terminals for richer, high-quality visuals.



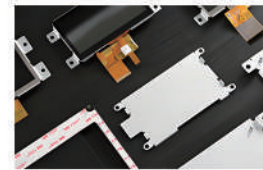
## LED Backlight Constant Current Board – uniform and efficient backlight control

Yousee's LED backlight constant current board delivers precise and stable current to LED backlights, ensuring uniform brightness, long lifespan, and energy-efficient operation. This solution is ideal for industrial displays, automotive panels, smart terminals, and multimedia devices, providing consistent, high-quality backlighting for any application.



## CUSTOMIZATION SERVICE

Yousee is more than a display manufacturer — we are your end-to-end solution partner. From concept to mass production, we provide product development, engineering design, and turnkey OEM/ODM services. Our experts support prototyping, design, testing, and manufacturing, delivering tailored display and touch solutions that empower your product to succeed.



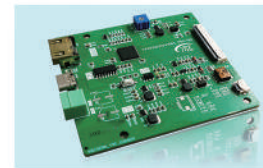
Custom Backlight



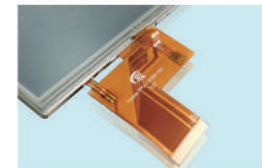
Touch Screen Customization



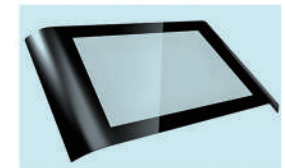
Cover Glass/Lens Add-Ons



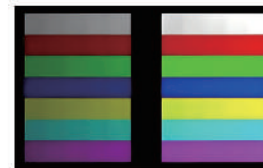
PCB Modifications



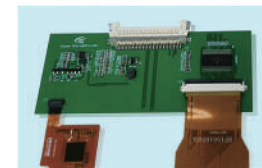
FPC Customization



Surface Treatment Solutions  
(AR, AG, AF)



Brightness Customization



Interface Transfer



More to discuss