

**SINCE 1977  
WE DELIVER DIE  
CASTING PARTS  
THROUGHOUT EUROPE**

**1977**



TORRI FONDERIE  
WAS BORN

**1999**



INSTALLATION OF  
MECHANICAL MACHINES  
TO PROVIDE PARTS  
READY TO BE ASSEMBLED

**2015**



APROCESSES AND MACHIERIES  
INTERCONNECTION'S AUTOMATION  
FOR DATA EXCHANGE

**2023**



PRODUCTION SITE'S  
EXPANCTION

## CERTIFICATIONS:

ISO 9001

BUREAU VERITAS  
Certification



**QUALITY CERTIFICATION**

ISO 14001

BUREAU VERITAS  
Certification



**ENVIRONMENTAL CERTIFICATION**

## OUR PROCESSING



DIE CASTING

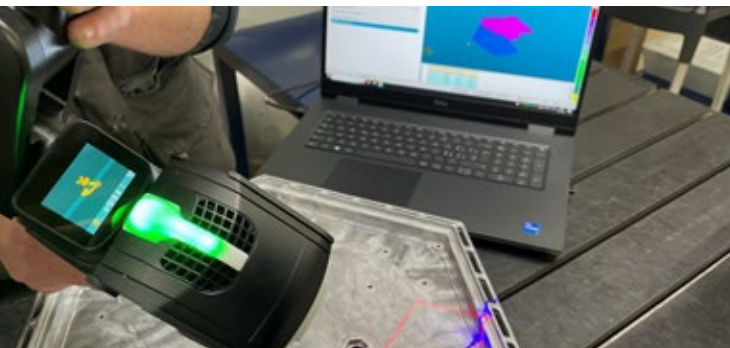


AUTOMATIC DEBURRING  
AND MACHININGS



CNC MACHINING  
AND SANDBLASTING

## OUR SERVICES



LAST GENERATION CMM AND  
SCANNER QUALITY CONTROL MACHINE



AUTOMATION PROCESS



MOULD AND TRIMMING  
TOOL CONSTRUCTION

**WE FOLLOW THE WHOLE PRODUCTION PROCESS, PROVIDING THE FINISHED  
PRODUCT READY TO BE ASSEMBLED**

# OUR MACHINES

## PRESSES

IDRAPRESSE 1600 TON	ITALPRESSE 1200 TON	IDRAPRESSE 800 TON
ITALPRESSE 750 TON	IDRAPRESSE 700 TON	IDRAPRESSE 500 TON
ITALPRESSE 400 TON	IDRAPRESSE 225 TON	

DIE-CASTINGS FROM 0.1 KG TO 15 KG

## MECHANICAL PROCESSING

- 6 automatic islands for deburring and cleaning, equipped with 6-axis KUKA robots
- Machinery and interlocking transfer to automatic islands for mechanical processing
- 6 CNC machining centers
- 10 trimming presses (from 20 to 60 tons)
- Drills and multi-head threading machines

## ALLOYS USED

UNI EN AB 44300

UNI EN AB 46100

UNI EN AB 47100