

MATCHWELL 益和®

CAT

*Together*

&

We Love Cats, Dogs  
& the World.

DOG

JIANGSU MATCHWELL  
PETSELECTION CO., LTD

# Overview of the Group & Subsidiaries

**MATCHWELL 益和**  
MATCH YOUR PETS WELL

## Matchwell ( 2012 )

Pet Snack Base  
Group Irradiation Sterilization

## Yihui Tech ( 2020 )

Cereal cat litter  
Biological bacteriostatic spray

## Matchwell PetSelection ( 2023 )

Freeze-dried & baked food base, Group  
Cloud Warehouse Service  
Group R&D Center

## Yichong Tech ( 2016 )

Group Testing Center  
Wet Food & Pet Seasoning, Health  
Products Base

## Matchwell Nanjing ( 2021 )

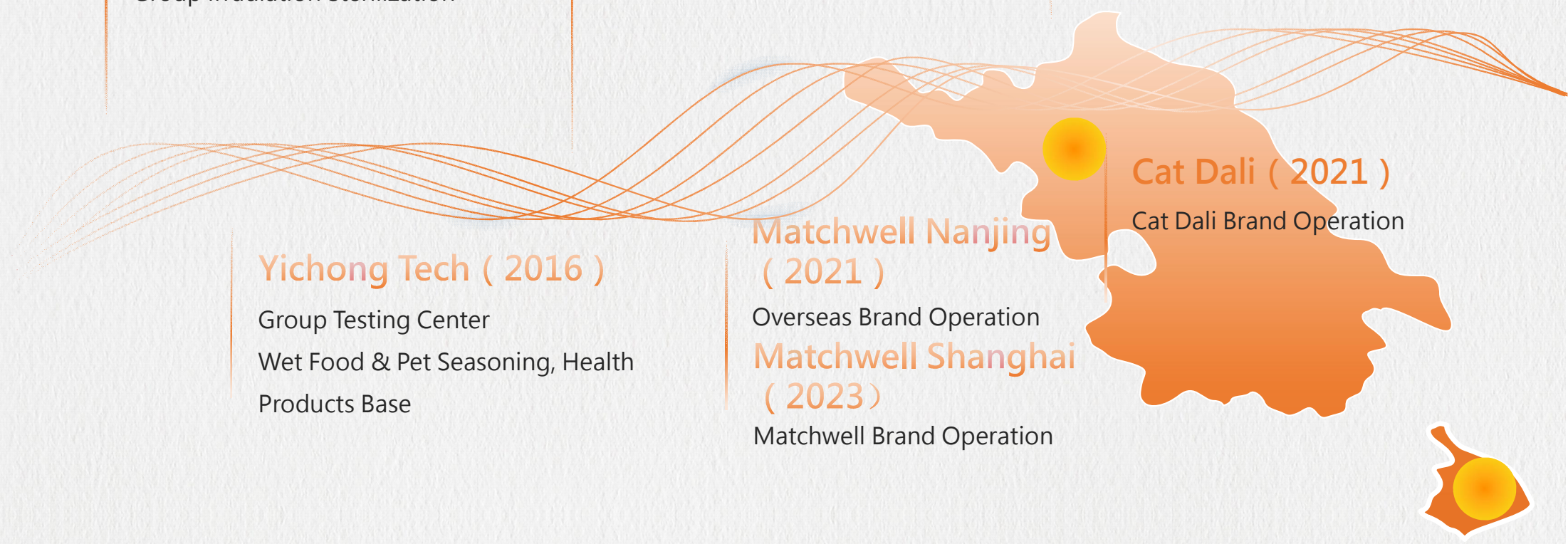
Overseas Brand Operation

## Matchwell Shanghai ( 2023 )

Matchwell Brand Operation

## Cat Dali ( 2021 )

Cat Dali Brand Operation



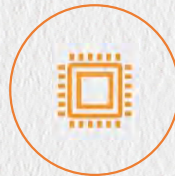
# Quality control management system



## Food Safety Management System

01

- ISO22000
- IFS



## Overseas Institution Certification

02

- FDA
- BRC
- BSCI
- SEDEX
- HALAL(Pending)



# Enterprise Testing Center

Founded in 2018, with a building area of 2000m<sup>2</sup>, our testing institution mainly engaged in pet food testing. Currently, we have nearly 100 sets of advanced automatic and semi-automatic testing instruments, with an investment of 20 million Rmb. We are currently applying for CNAS certification and is expected to pass the certification in February 2025.

The testing center strictly establishes, operates, and tests in accordance with the ISO/IEC 17025:2017 system, and carries out more than 30 testing projects such as physicochemical, microbiological, and biotoxin testing of pet food to meet the requirements of national standard testing projects for pet food. Currently, the center has 12 professional and technical personnel.



**MATCHWELL益和®**  
MATCH YOUR PETS WELL

**Welcome to contact!**

[kevinchengpet@gmail.com](mailto:kevinchengpet@gmail.com)